

Arts Access
Annual Report
2002-2003

AF
790.19606
AR7
2002/2003





Arts Access provides access to arts and cultural activity for people who are disadvantaged including people with a disability

Chair's Message

The year has been one of setting up new projects and establishing new partnerships, ensuring that the Arts Access philosophy of long term development and sustainability is a living breathing reality.

The Artistic Program has developed two new regional projects with the enthusiastic partnership of Telstra and VicHealth. The recent handover of the established Art Day West program to Footscray Community Arts Centre demonstrated our commitment to community ownership.

Fiona Hanrahan's international benchmarking tour to the United States has sparked a number of new project areas and innovative ideas to bring to maturity over the next few years.

Management issues have also been a continuing focus with the introduction of a risk management plan, improved OHS procedures and the streamlining of IT and reporting systems. Online data reporting to the Department of Human Services will increase efficiency and accountability. The upgrading of the website and the publishing of an e-newsletter ensure that client groups have ready access to the latest information.

Financially we have achieved better than budget again and improved long term financial security with the achievement of triennial funding from the Department of Human Services.

The Board has been actively involved in planning and guiding, the highlight being a June 'end of year' review which showcased this year's activities and closed the gap between knowing about projects and seeing and hearing at first hand the transformational power of creativity for people who, without Arts Access, would miss out.

On a personal note, this is my last year (after twenty seven) as an Arts Access Board Member (five as Chair). Thank you to the many dedicated people – Board members, staff, artists and funding bodies who have nurtured and developed Arts Access over the years, and together created an organisation which is growing confidently into the future.

Alan Moor
Chair



Executive Director's Message

Arguably our biggest success this year at Arts Access was keeping all of our wonderful staff (keeping them here and keeping them happy), which increased the range and richness of the work we were able to do. Our people are our greatest asset.

Ruth, Anne, Jo, Cathy, Ross, Lynn and the many talented artists, support workers and project managers are to be thanked for their great work in the Artistic Program. Gorgeous projects such as *Saturday Morning Art Classes* for people with mental health issues continued: these projects are small, not very outcome focussed, but incredibly powerful and sometimes life-changing for the participants and artists. Other projects such as the *Inclusion International Arts Festival*, where we curated a performing arts, visual arts and film program for 1500 international delegates, are high profile, exciting and allow us to showcase the excellent work being done by artists with disabilities from around Victoria. *Storm* was a fantastic model of diverse communities coming together - primary students from Croxton Special School joined forces with the Pomegranate Women's Choir and Veronica Gardens Retirement Village to create a performance that was unforgettable, and the whale was fit for Jonah!

Fiona, Jenny, Keith and casual staff continued the excellent work in the Access Program. In particular, the advocacy and audience development work this year blossomed, largely as a result of Fiona's trip to the U.S. that showed us how it really can be done. We are now introducing live captioning into Australia, in collaboration with the Australian Caption Centre, which will give thousands of Australians vastly improved access to live performance. We started work with the arts industry on Access Guidelines for museums and galleries, and Access Guidelines for seating and ticketing. The EASE Ticket service continues to facilitate tens of thousands of attendances at arts and entertainment events, in partnership with presenters and producers.

I would like to thank the administration team for their commitment and great work behind the scenes. The team increased this year: Nerida Weller joining Simon, Crieda, Carly and Sue, bringing a renewed and welcome focus on communications and marketing. Crieda must be particularly thanked for taking on the role of Executive Director for three months while I spent time with my new baby daughter Min.

The Board has once again been a source of strength, guidance and stability.

I would particularly like to thank Alan Moor, who steps down as Chair this year. His commitment, support and unflappable nature have been an incredible aid to the formation and successful growth of Arts Access over the last twenty seven years. On behalf of participants, employees, partners and the Board – thank you Alan!

Nicole Beyer
Executive Director

Arts Access Board 2002-2003 Chair, Alan Moor, Director, Performance Improvement Seminars and Conferences Deputy Chair, Ian Pidd, Theatre and Event Director Deputy Chair, Catherine Van Wilgenburg, Director, Living Colour Studio Treasurer (from February), Peter Carlson, Senior Manager, Group Finance, National Australia Bank Treasurer (until December), Mark Seddon, Principal Ernst and Young Bin Dixon-Ward Manager, Creative Communities, Regional Arts Victoria Ashley Heenan, Arts and Disability Consultant Chris Brophy, Cultural Heritage Consultant Andrew Sanderson, Director, Blythe-Sanderson Disability Management Sandra Taylor-Bowman, Marketing Director, Invetech Cecily Tange, General Manager, Administration, Royal Children's Hospital Carl Carthy, (Member until March) Director Marketing and Commerce, Melbourne Zoo

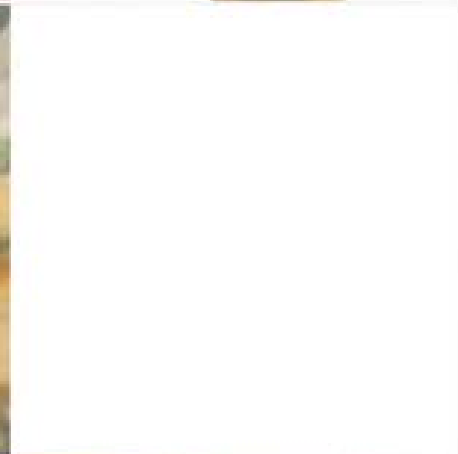


Arts Access
People

Administration Executive Director, Nicole Beyer | Associate Director, Ciena Gehrke | Finance Manager, Simon Gould
Communications Coordinator (from October) Nerida Weller | Administration Coordinator, Carly Weber
Administration Officer, Suzanne O'Neill **Artistic Program** Artistic Program Manager, Ruth Whittingham | Artistic Project
Coordinator, Jo Cohen | Artistic Project Coordinator, Anne Riggs | Artistic Project Coordinator (June-September)
Cathy Horsley **Access Program** Access Program Manager, Fiona Hanrahan | EASE Administration Officer (on leave from
December), Jenny Penhall | EASE Administration Officer (from January), Keith Hunter | Contract Administration Staff
Andrew Hall, Leon Hanrahan | Student Internship, Rochelle Wong

Artists, support workers & project co-ordinators

Inclusion International Arts Festival Akash, Art Day South, Art Day West, Art Unlimited, Arts Connection, Arts Project Australia, BreakOut Dance, Brrrr Theatre, Carinya Society, Churinga Support Services, Club Wild, Dramability, DVA Theatre Company, Express Gang, Phil Heuzenroeder, Ignition Theatre Training, Karingallery, LaTrobe LifeSkills, Merrimu Services, Minibah Services, NMIT Arts/Education Program, Ian Pidd, Rapunzel Theatre, Rawcus, Rick Randall, Stretch Physical Theatre, Swinburne Work Education Program, Windarring Services **Storm** Anita Rickwood, Ian Pidd, James Wilkinson, Megan Cameron, Mikkel Mynster, Nick Barlow, Rick Randall, Tom Fryer, Vanessa Beck, Will Guthrie **Art Day West** Catherine Buman, Claire Teisen, David Holmes, Dee Buman, Jenny Watkins, John Fleming, Leanne Lovett, Seth McGorlick, **Art Day South** Andrew Tranter, Davide Michelin, Ellen Benson, Gavin Smith, John Ford, Katrina Malseed, Katrine Gabb, Kereen Ely-Harper, Leonie Van Eyk, Malcolm Gray, Matthew Stenning, Phil Heuzenroeder, Rick Doyer, Seth McGorlick **Norridge** Andy Freer, Antony Riddell, Emma Cooper, Ian Pidd, James Wilkinson, Janice Florence, Marc Brew, Pauline Cady **Way Out West** Aaron Byrnes, Hilary Elliott, Jennifer Bartholomew, Jenny Cassar, Karina Doughty, Kim Baston, Scope Support Workers **Footscray House SRS Project** David Holmes, Verena Marmion **Saturday Morning Art Class** Ann Holt, Annette Trevitt, Barbara Boetker, Carolyn Rundell, Dianne Zacanovsky, Kate Gifford, Lori-Jean Kirk, Prue Flint, Susan Kneebone **Greenhaven SRS Project** Alison Peake, Lori Jean Kirk, Nicole Haverfield-Francis **Alex & Andreas Mentorship** Alex Litsoudis, Andreas Litras, Katerina Kotsanis, Tony Nikolakopoulos **Auspice Deaf Arts Network** Deb Lummis, Lynn Gordon, Peta Clancy, Ross Onley-Zerkel, Samantha Wilson, Selwyn Hoffman **Auspice One Step Off The Street** Aurura Kamemcovich, Bill McKenzie, David Ewer, Eve McConville, Peter Renshaw **Get Out!** Amanda Owen, Andrew Tranter, Barbara Boetker, Cathryn Horsley, Dianne Zacanovsky, Dominique Redston, Jacqui Stockdale, Jane Bourke, Jennifer Keenagahagedara, Josie Quayle, Kay Vosti, Kellyann Guerts, Linda Bakker, Lori Kirk, Malcolm Gray, Margaret Copley, Sarah Bingle, Verena Marmion, William Thomas, Yvonne Cullen **Breastscreen Inspired Arts Project** Gali Weiss, Mmapelo Malatji **Deaf Audiences Research** Effective Change **Western Lodge SRS Project** Amanda King, Dianne Zacanovsky **Photographers and Documentation** Angela Bailey, Anne Cabrie, Catherine Acin **Training** Ian Pidd, Janice Florence, Katrine Gabb, Marc Brew, Ross Onley-Zerkel





goal one to use cultural activity as a means of
empowering individuals and strengthening communities

Arts Access provides opportunities for people with a disability or those who are disadvantaged to be actively involved in the arts as creators (through the Artistic Program) and audience members (through the Access Program). The true measure of our success is the amazing and compelling art produced and the positive feedback we receive from EASE members, artists and participants.

ARTISTIC PROGRAM

Inclusion Arts and Disability Festival 22-26 September 2002 In conjunction with the 13th World Congress of Inclusion International, Arts Access presented the *Inclusion Arts and Disability Festival*, showcasing the performing art, visual art and film work of over 200 emerging and established artists with intellectual disabilities from across Victoria. The Congress was held at the Melbourne Convention Centre, with approximately 1,500 conference delegates from 65 countries.

Storm Performance – Croxton Special School, 24 October 2002 As the heavens opened up outside, an audience of over 300 people gathered in the school hall to witness the result of 80 arts workshops – the extravaganza that was *Storm*. With infectious enthusiasm, students from Croxton Special School, residents of Veronica Garden's Retirement Village and participants from Thornbury Women's Centre and Northland's Secondary College presented an unforgettable night of music, song, puppetry, film and performance.

Norridge – Partnership with Snuff Puppets, 19-23 May 2003 Eight professional artists with and without disabilities were involved in this second creative development (initially called *This Show has Legs*). A week of writing and playing with theatre and music yielded a quirky and idiosyncratic theatrical concept. *Norridge* is a claustrophobic, overblown costume drama/comedy-of-manners. Set in 1890s Casterton, money from grazing has seen several generations of a family establish a manor on the Western edge of Australia Felix. Named after the spectacularly fecund bull upon which the family's wealth rested, *Norridge* is set in the period of this family's decline. We will continue working towards a public performance.

Inspired Arts Project – Partnership with BreastScreen Victoria Two visual artists worked with 20 women from the Horn of Africa on a series of arts workshops where the participants explored their own interpretation of women's wellbeing. Working with coloured sand because it reminded them of Africa, the women not only developed new art skills – they drummed, danced, sang and ate together at each workshop ensuring this project was a true celebration of women's wellbeing. The work will be completed in August 2003 and will be on permanent display at North West BreastScreen Victoria.

One Step Off The Street Arts Access auspiced a grant on behalf of the Community Academy of Ideas, involving five locally based rooming house residents. *One Step off the Street* is a practical living guide for rooming house residents to be distributed in the City of Port Phillip in late 2003.

Art Day South Continuing to produce contemporary and cutting-edge work, the creative collaboration of staff and participants resulted in the short film *Bird* (and an original soundtrack); the combined performance/exhibition, *Cut!* at St. Martin's Youth Arts Centre; and the 2nd edition of the annual Zine. These impressive bodies of work emerged from an exploration of filmmaking and notions of celebrity.

Art Day West To celebrate the creation of the CD, the songbook and the soft-sculptures over the previous year, the performance/exhibition, *All About Me!* was held in September 2002. Friends, family and carers thoroughly enjoyed the work presented. This year the major project was the creation of a mural for the front of the South Kingsville Community Centre.

Saturday Morning Art Class This continually evolving arts program for adults with a mental illness resulted in the launch of a book of participants' art and creative writing, *Paradiso, a space for everything*. Arts Access also assisted in the development of a similar project in the outer southern region that was inspired by a participant.

Art in Supported Residential Services The fabulous Door Painting project encouraged people at Western Lodge to come out of their rooms, paint their doors and participate in the community.

Visual arts and music projects held at Greenhaven and Footscray House provided impetus for residents to explore their creativity and enhance their quality of life, through making work to beautify their home and enjoying a community experience. The music project is now run in both houses by Gateway.

ACCESS PROGRAM

Insert Caption Here! – partnership with the Australian Caption Centre Offered extensively in the USA and UK, captioning provides access to live theatre for patrons who are Deaf or hard of hearing through the display of dialogue, sound effects and other audio cues in text format. Arts Access is working with the Australian Caption Centre to run a pilot project to introduce this service to Australia and to identify long-term strategies for the delivery of the service in the future.

Deaf Audiences Research Project Arts Access, the Deaf Arts Network and Better Hearing Australia are undertaking research to ascertain the barriers to attendance for people who are Deaf and people who are hard of hearing at arts events. This project will also identify opportunities for arts organisations to devise effective strategies for increased access provision in the future. The research is conducted by Effective Change.

EASE Ticket Service Through the delivery of a range of accessible services that are not available through mainstream ticket agencies, the EASE ticket service continues to provide equity and encourage participation by audiences who are disadvantaged at arts and cultural events.

In 2002-2003 we **managed** 32 projects through the Artistic Program and Access Program. We were constantly in **awe** of the work by our 633 participants and **indebted** to the 107 dedicated and creative artists and support workers we employed. We **distributed** over 20,000 tickets, coordinated 12 sign-interpreted and 27 audio-described performances as part of our ongoing **commitment** to our 600 EASE members.





goal two to provide an effective advice, referral and information service

Arts Access is the peak body for arts and disability in Victoria. We offer a one-stop information shop and every year respond to thousands of enquiries from individuals, artists, carers, the arts and cultural sector, disability and health organisations and government departments.

Communications The most exciting and significant change to our information services in 2002-2003 was the employment of a Communications Coordinator, which led to an overhaul of this area of organisation. Our website is now constantly updated, current and relevant information is sourced and disseminated regularly to staff, EASE members and the wider community.

Advocacy The Access Program improved access to the arts for people with a disability by assisting and advising a broad range of arts and cultural organisations on issues of legislation compliance, audience development, venue access and provision of access services.

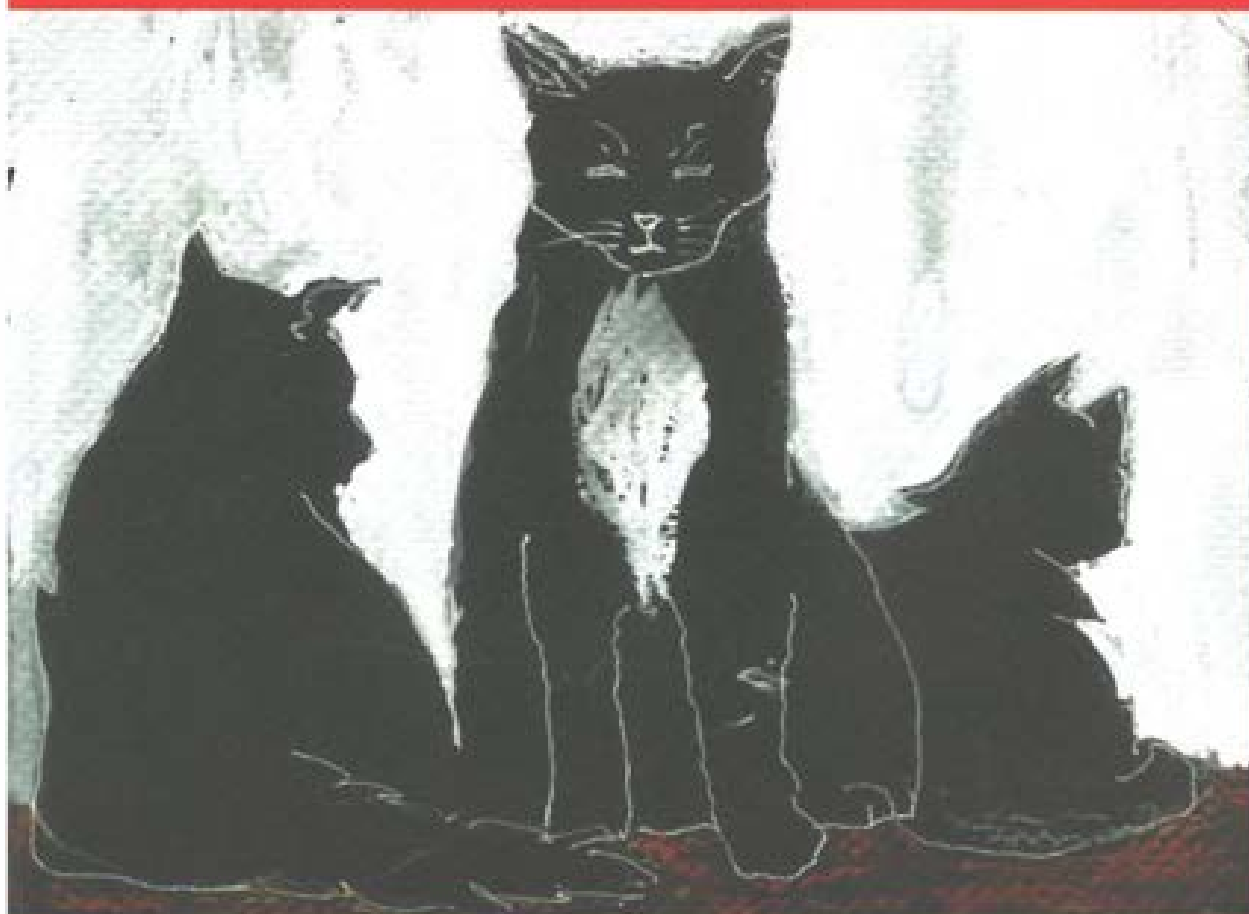
Through the EASE ticket service we followed up on issues or barriers encountered by our members when attending events. EASE provides a vital link between the industry and the community, ensuring that patrons have the opportunity to comfortably voice their concerns whilst enabling the industry to learn and develop strategies that improve access.

The Artistic Program uses art as an advocacy tool by promoting the work of artists with a disability. This year the extraordinary work of our participants was showcased in exhibitions, performances, launches and through our website and publications.

Information As the peak body for arts and disability/disadvantage in Victoria, Arts Access is committed to providing up to date and relevant information. This year we kept abreast of current trends and issues through staff training that included cultural diversity, *deaf deaf world* and general disability awareness and through subscriptions to 60 publications & journals and over 30 e-groups and bulletins.

Thanks to student placement Rochelle Wong, we also thoroughly researched and updated our access information for cultural venues across Victoria.

In 2002-2003, we **responded** to around 12,000 phone calls and email enquiries and had over 19,000 visits to our website. We surveyed 58 cultural venues and **advised** 28 arts organisations on access issues. We distributed 5 EASE Ticket Updates and **provided** news in brief through our new look newsletter *access points*. Our publications were **available** in a number of accessible formats including audio-cassette, large print, Braille and plain English. We **embraced** new technology by establishing an e-news bulletin and providing resources like the **invaluable** art directories online at www.artsaccess.com.au/connect



goal three to be visionary
in our approach

At Arts Access we are committed to being forward looking, finding creative solutions, thinking outside the square, seeking new and unlikely partners, and striving for long-term and sustainable outcomes.

New ideas To celebrate International Day of People with a DisAbility 2002, Arts Access ran a forum attended by over 20 artists, project workers and organisation representatives. Facilitated by Ian Pidd, the group were asked, "If you could do any arts project for International Day, what would it be?" The session was a hothouse of ideas, networking, dreaming and debate. From this forum came the concept for a disability film festival that is currently in development.

Artist Mentorship Arts Access established a mentorship between emerging actor Alex Litsoudis and established professional actor Andreas Litras. Over 20 weeks, Alex and Andreas explored many issues including their shared Greek Australian background and Alex's experiences as a young man with an intellectual disability. In February 2003, Andreas directed an extremely moving and challenging short performance, depicting scenes from Alex's life, powerfully presented by Alex and two other Greek Australian actors Tony Nikolakopoulos and Katerina Kotsanis.

Get Out! was founded in partnership with **Wongabeena Association** in response to an identified need in the Frankston/Peninsula area. Launched in July 2002, this three year program provides a fortnightly arts day program to adults with a disability whilst providing respite for their families.

Art Day West handover to Footscray Community Arts Centre After 10 years, Arts Access officially passed the baton to the Footscray Community Arts Centre's ArtLife Program at the end of June 2002. A thorough handover from Art Day Coordinator to the ArtLife Coordinator ensured that the transition was smooth. The handover was celebrated with the usual all-singing, all-dancing Art Day West extravaganza, with past and present participants, staff, families, and carers.

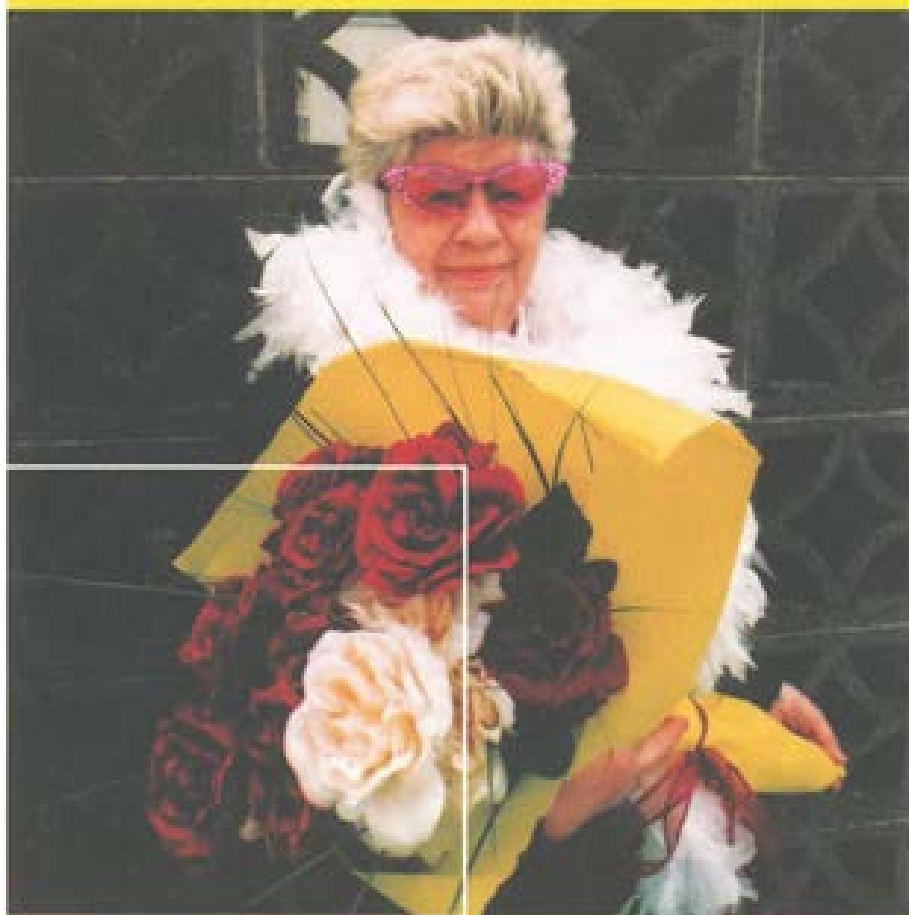
Way Out West In partnership with St. John of God, Brimbank Support Services and Scope, St. Albans, Arts Access ran a wonderful pilot project at the Overnewton Gatehouse Gallery in Keilor. Modelled on Art Day West, the WOW project catered for 20 participants with intellectual and physical disabilities who attended visual and performing arts workshops every Friday from January to June 2003. To top off the success of WOW, funding was received from DHS for the continuation of this project.

Guidelines and Research This year, the Access Program focussed on ways to achieve industry driven change by using research, developing guidelines, and undertaking training. Guidelines in development include Accessibility Guidelines for Museums and Galleries, in conjunction with Vision Australia and Museums Australia (Vic), and Guidelines for seating and ticketing, in collaboration with VICNORD.

The Jedda Fund In memory of our colleague, Jedda Bellerjee, who passed away in 2001, this fund was established in response to an enquiry from an artist with a disability struggling to afford art materials. The Jedda Fund offers a small, one-off grant to assist low-income artists with their production costs. The application process is unbureaucratic and the outcome joyful. The Fund also brings enormous pleasure to Jedda's husband and family.

Deaf Arts Network Auspice Deaf Arts Network (DAN) supports Deaf people in the arts, Auslan and Deaf communities by creating opportunities and distributing information. DAN worked with both the Artistic Program and the Access Program, broadening its experience to include research and advocacy work. This year DAN ran a series of photography workshops at RMIT and a second series of Sign Singing workshops.

In 2002-2003 the Artistic Program worked in **partnership** with 13 organisations and the Access Program worked with 12. We were also **supported** through the EASE Ticket Service by 38 arts and cultural organisations.



goal four to promote our mission
to the widest community

At Arts Access we promote our ideals and values in everything we do. We also encourage collective responsibility for increasing access through training, consultations and committee representation.

Mansfield Training Workshop On a cold Saturday in June, 25 artists from the Mansfield area were warmed by a day-long Train the Trainer session, which included basic Disability Awareness Training and a hands-on theatre workshop. The artists found the session extremely informative and enjoyable, and since then a small group has visited Art Day South to see the theatre workshop in action with adults with an intellectual disability.

Training for arts and cultural organisations The Access Program provides training and policy development that is tailored to address access issues that are unique to the arts and cultural sector. This year we were thrilled to witness so many arts professionals eager to learn, and to work with Melbourne International Film Festival, Regional Arts Victoria, Melbourne International Arts Festival, Big Picture Festival and Event Conference in Bendigo.

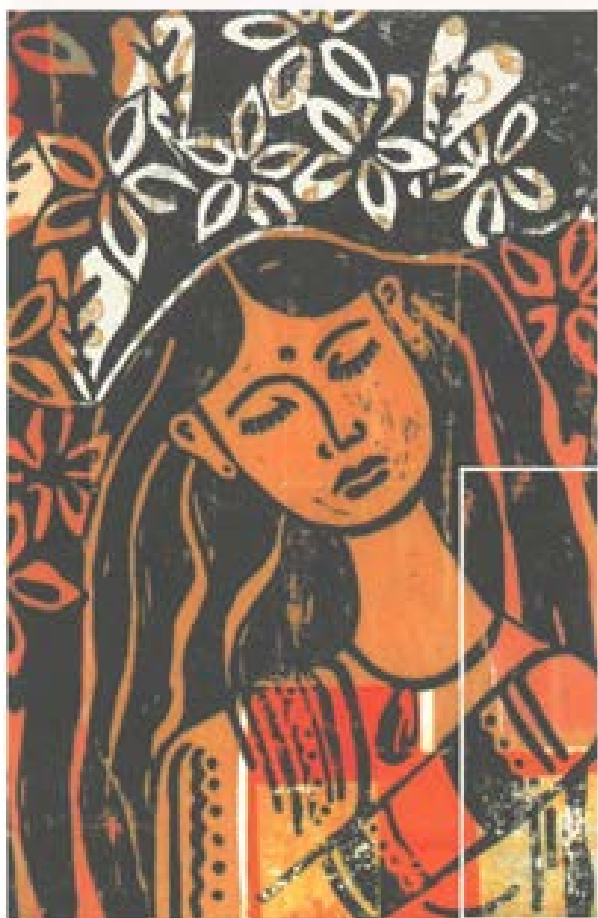
DADAA DADAA National is the Australia wide affiliation of arts organisations working to improve access to and participation in the arts for people with disabilities and people experiencing disadvantage, of which Arts Access is the Victorian member.

This year, DADAA worked closely with the Australia Council, Department of Communications, IT and the Arts, and Family and Community Services on advocacy and audience development initiatives. The annual conference was held in Tasmania in May, where support was also provided for the Tasmanian member, Arts R Access, in its planning process. Ongoing networking and peer support is achieved via teleconferences and an e-group. Thanks to Claire Havey for her fabulous work over the years, and welcome to Gareth Wreford as National Director. For information about DADAA organisations in other states, check out www.dadaanat.net.au

New York and Washington D.C. In August 2002 Fiona Hanrahan, the Access Program Manager, was invited to attend the International Accessibility Managers in the Cultural Arts Conference in Washington DC and participate in a review of the Smithsonian Institute Guidelines for Accessible Exhibitions. Not only was this invitation an acknowledgement of our international standing, it offered Fiona the opportunity to promote the work of Arts Access overseas, and to undertake some benchmarking in cultural access solutions.

Marketing and Communications We have overseen the transformation of our logo and letterhead from red to low vision-friendly green, and our new braille-embossed business cards are admired for being stylish and accessible. A new e-bulletin keeps everyone informed of Arts Access activity and news within the arts and disability sector. Our work is promoted in local newspapers, arts, health, disability & council websites and email lists.

In 2002-2003 we **raised** our voices on the following committees: Deaf Arts Network, The Art of Difference Festival, Arts Industry Council (Vic), DADAA National, Melbourne City Council Disability Advisory Committee, Melbourne City Council Children's Festival Steering Committee, Companion Card Reference Committee, Vicdeaf Sign Interpreting Committee, Victorian Disability Sports Advisory Committee, Disability Media-No Limits, Deaf TV, Commonwealth Games Social Inclusion Committee, Short Statured People's Association, Genetic Network Support Victoria, International Day of People with Disability Film Festival, City of Bayside Cultural Advisory Committee, Association of Providers of Disability Support Network.



goal five to achieve secure funding and efficient operational structures

Behind the great art and fantastic projects, there is an efficient and dynamic administration. A huge part of Arts Access' success is the value we place in our staff and our commitment to a progressive, accessible and safe working environment.

Funding In 2002-2003, Arts Access received continued support from Department of Human Services, Arts Victoria and the Australia Council. We also received funding from The Besen Foundation, the Myer Foundation, the City of Port Phillip, the Reichstein Foundation and RMIT.

This year we were thrilled to secure two-year funding from VicHealth to run *The Sheep's Back*, and funding from the Telstra Fund to work in partnership with Victorian Aboriginal Community Controlled Health Organisation (VACCHO) both projects due to commence in late 2003. These new funding sources and structures not only contribute to a more sustainable and robust financial position, but allow us to plan long-term.

Governance The Board continues to make a huge contribution to the organisation. In 2002-2003, a new initiative was the addition of regular staff presentations at Board meetings to brief the Board on current projects. In late June, staff and Board met for a night of wine, sausages & "show and tell." Staff reported to the Board against the Business Plan highlighting the successes and challenges of 2002-2003.

Operations Our commitment to a working environment that encourages a life/work balance, flexibility and open communication continued and we even managed modest pay increases for long-serving staff. There was no staff turnover this year indicating a happy and dedicated staff.

On a policy level, we worked extensively on our Occupational Health and Safety Policy and began the long process of developing a Risk Management Plan. On a procedural level we developed a new computer filing system, fully catalogued our library and introduced a meeting schedule that has led to improved internal communications.

In 2002-2003 we **achieved** better than budget, with an annual turnover of \$871,626. The Board **convened** 6 times with a new Treasurer joining us in February. We wrote over 20 funding applications, 6 acquittals and we (eventually) **conquered** the new online DHS reporting system. We bid **bon voyage** to the incomparable Caroline Bowditch. We **welcomed** the erudite Nerida Weller and the percussive Keith Hunter to our Staff and the long-awaited Harry Penhall and Min Beyer-Marriott to our family. We **upgraded** 4 computers, trialled 2 telephone headsets, built a wall to make more office space, purchased another comfy couch, **rejoiced** at our new TTY machine and **predicted** rain everytime we had a staff bbq.



financial statements

ARTS ACCESS SOCIETY INCORPORATED

STATEMENT BY BOARD OF MANAGEMENT FOR THE YEAR ENDED 30 JUNE 2003

1. In the opinion of the Board of Management of Arts Access Society Incorporated:

- a) the financial statements present fairly the financial position of Arts Access Society Incorporated as at 30 June 2003 and its performance, as represented by the results of its operations, for the year ended on that date; and
- b) there are reasonable grounds to believe that Arts Access Society Incorporated will be able to pay its debts as and when they become due and payable.

Signed in accordance with a resolution of the Board and signed before and on behalf of the Board by:

A J Moor

President

29/10/2003

Dated

PC

Treasurer

29/10/2003

Dated

STATEMENT OF FINANCIAL PERFORMANCE FOR THE YEAR ENDED 30 JUNE 2003

REVENUE FROM CONTRIBUTIONS	2003	2002
	\$	\$
Department of Human Services - Core Funding	165,607	156,617
Department of Human Services - Project Funding	297,943	310,932
Arts Victoria - Core Funding	85,000	85,000
Arts Victoria - Project Funding	13,128	0
Australia Council - Core Funding	50,000	50,000
Australia Council - Project Funding	16,002	1,998
Vic Health - Project Funding	21,298	25,677
Other Funding	32,087	34,483
Earned Income	173,633	162,075
Other revenues:		
Interest	16,928	22,681
Total revenue from ordinary activities	871,626	849,463
Cost of goods sold	121,806	103,731
Project Costs	233,054	214,543
Employee expenses	363,617	356,387
Occupancy expenses	48,795	46,039
Depreciation expenses	39,872	42,962
Other expenses	83,856	88,653
Total Expenses	891,000	852,315
Surplus/(deficit) from ordinary activities before related income tax expense	(19,374)	(2,852)
Income tax expense relating to ordinary activities	0	0
Surplus/(deficit) from ordinary activities after related income tax expense	(19,374)	(2,852)
Net Surplus/(Deficit)		
Retained surplus/(deficit) at the beginning of year	204,621	207,473
Net surplus/(deficit) attributable to members	(19,374)	(2,852)
Retained surplus/(deficit) at end of year	185,247	204,621

Note

Full set of accounts are available from Arts Access in large print version, by email or by standard mail.
See back page for contact details.

AUDIT REPORT

SHEPPETS TAXATION SERVICES PTY LTD
ACN 005 417 069 ABN 27 903 926 218

Principal: LEO SHEPPET
Directors: LEO SHEPPET

Suite 1/Level 1/325 Clayton Road
CLAYTON VIC 3168
(P O Box #5157 CLAYTON VIC 3168)
Tel (03) 9544 3055 Fax (03) 9543 1371
AH Mob 0414 353 861

**CERTIFIED PRACTISING ACCOUNTANTS
REGISTERED TAX AGENTS
LICENSED COMPANY AUDITORS**

Auditors Report

I Leo Sheppet as auditor for **Arts Access Inc**, report that the attached Profit & Loss Statement and Balance Sheet for the year ended **30 June 2003**, are consistent with the Books of **Account of Arts Access Inc** and reflect the State of Affairs of Arts Access Inc for the year ended **30 June 2003**.



LEO SHEPPET CPA
Registered Company Auditor No 3/A/01328



Funding Partners Arts Victoria, Australia Council for the Arts, Department of Human Services, VicHealth

Project Funding Support The Besen Foundation, City of Port Phillip, the Myer Foundation, the Reichstein Foundation, RMIT

PROJECT PARTNERS

Artistic Program Awakenings Festival, BreastScreen Victoria, Brimbank Support Services, Croxton Special School, Footscray Community Arts Centre ArtLife Program, Footscray House SRS, Greenhaven SRS, North West BreastScreen Victoria, Pomegranate Choir – Thornbury Women's Neighbourhood House, Rural Access, Central Hume Region, St. John of God, Scope St. Albans, Strathbogie Shire - Goulburn Rural Access, Snuff Puppets, 13th World Congress Inclusion International, VALID, Victorian Aboriginal Community Controlled Health Organisation (VACCHO), Veronica Gardens Retirement Village, Western Lodge SRS, Wongabeena Association Inc

Access Program Australian Caption Centre, Melbourne Festival, Museums Australia, National Gallery, Better Hearing Australia, Deaf Arts Network, Regional Arts Victoria, VICNORD, Vicdeaf, Vision Australia, Victorian Council of Deaf People, Victorian Services for Deaf Children

EASE Ticket Service Australian Ballet, Australian Pops Orchestra, Circus Oz, Comedy Festival, Dainty Consolidated Entertainment, Hoyts Cinemas, Gordon Frost Organisation, IMG, International Concert Attractions, Jacobsen Entertainment, Jon Nicholls, Melbourne Symphony Orchestra, Melbourne Theatre Company, Melbourne International Arts Festival, Melbourne Chorale, Melbourne Museum, Opera Australia, Orchestra Victoria, Polyglot, Production Company, Mollisons, Talentworks, Malcolm Cooke & Associates, Scienceworks, Ticketek, Ticketmaster 7, Vision Australia, Vicdeaf, Village Cinemas, VCOD **Venues** Darbin Arts Centre, Chapel Off Chapel, Clocktower Centre, Frankston Cultural Centre, Geelong Performing Arts Centre, Mariners Theatre, Melbourne & Olympic Park, Victorian Arts Centre

DADAA National Network Claire Havey & Gareth Wreford, **DADAA National**, Susan Abbott, **DADAA ACT**, Helen Connors and Kiersten Fishburn, **Accessible Arts NSW**, Neal Price, **Access Arts QLD**, Jayne Boase and Susan Maley, **Arts in Action SA**, Mary Guy, **Arts 'R' Access Tasmania**, David Doyle & Val Shell, **DADAA WA**

International Day for People with a Disability Think Tank, Alison Peake, Andrew Tranter, Annie Mangan, Anthony Riddell, Ashley Heenan, Bin Dixon-Ward, Catherine Threlfall, Ian Pidd, Janice Florence, Kate Sulan, Katrina Malseed, Katrina Gabb, Kim Baston, Larry Boyd, Leesa Nash, Leonie Van Eyk, Lynn Gordon, Rick Randall, Rosemary Joy, Zera Beechum

Thanks especially to Alex Varley, Anita Sutcliffe, Andrew Hall, Anna Fairclough, Anne-Marie Wheller, Beth Johnson, Betty Siegal, Bill McKenzie, Claire Keating, Crusader Hillis, Danielle Hargreaves, David Silke (TNS), Denise Olsen, Denise Leembruggen, Fiona Beckwith, Fiona Sweet & team, Glenda Dickson, Geoff Taylor, Ian Pidd, Ian Shaw, Jacqui Robinson, James Dipnall, Jennifer Daddow, Jill Graham, Julie Gebron, Kaaren Smethurst, Ken Wong, Kenneth Latham, Kevin Stone and team, Linda Masters, Lisa Carling, Lois Roffe, Marjorie West, Mark Stapleton, Maxine Yates, Merrian Olivier-Weymouth, Meredith Bartlett, Orchestra Victoria, Peter Reis, Phil Tayleur, Robyn Szechtman, Ros Nam, Ross Onley-Zerkel, Russell Green & Ed Borland (RUCC), Ruth Komisaroff, Sally Marsden, Sandra Ayache, Susan Ball, Stuart Koop, Terry Knox and staff, Ty Newton, Vicki London, Victoria Cuevas, Victoria Jones, William Thomas. And a big thank you to our family and friends.

FEEDBACK FROM PARTICIPANTS AND MEMBERS

"Great to receive this email update...on the various ways Arts Access continues to fan the flames of self worth and positive identity in less advantaged communities."

"The projects bring a sense of pride to the people involved and allow the general public to appreciate the talents of people they may never otherwise encounter." Susan Ball, Vichealth

Norridge "This project has contributed immensely to my development and experience...valued the opportunity to be seen in mainstream arts as a professional artist with a disability."

Storm "the most amazing night of our lives"

"our family couldn't believe that our son would be a star performer"

Inclusion Festival "Andrew was extremely thrilled with the news that his cat painting was sold, and it has inspired him to keep working hard in his art class."

SMAC "This is what I've been waiting to do for such a long time"

"Thanks, it was a wonderful, memorable experience. This class has helped me cross the bridge into doing artwork at home and this pleases me very much as it stops me getting depressed at home."

"Made me feel less isolated in the community".

Art Day "Jeff's creative abilities have really developed...it helps him to develop better social skills"

Get Out! "Debbie tells us about the wonderful people and projects she is involved with...she loves her time with you"

On request, this report can be made available in Large Print, audio cassette, Braille or Plain English.

Cover photo by Catherine Acin, Inspired Arts Program **p1** Greenhaven SRS mosaic and ceramic project **p7** Inspired Arts Program, Get Out!, Footscray Lodge Painted Doors project, Sign-Singing Workshops, Alex Litsoudis, Mentorship **p8** Filippo Cignorelli, with Self Portrait soft sculpture, Art Day West **p11** Untitled by Candice Jones, Art Day South **p12** Jessica Collin, Storm project participant **p13** Artwork by Carolyn Scott, SMAC **p15** Elaine Underwood, Storm project participant **p17** Artwork by Vicki Wilbur, SMAC **p20** Kay Neal, Greenhaven SRS **Photographers** Photo of Alan Moor and Staff by Anne Cabrie All other photos by Catherine Acin **Design** sweetdesign

Arts Access

24 Eastern Road

South Melbourne VIC 3205

Voice Telephone (+61 3) 9699 8299

TTY (Typing Telephone) (+61 3) 9699 7636

Facsimile (+61 3) 9 699 8868

EASE Bookings (+61 3) 9699 8497

www.artsaccess.com.au

info@artsaccess.com.au

