



ARTS PROJECT AUSTRALIA



Program Location

Arts Project Australia is conveniently located
10 minutes from the CBD (*Melways Reference 26 A8*)
and is readily accessible by:

Tram – Route No 86

Train – Hurstbridge line (Westgarth or Clifton Hill
stations) and Epping line (Clifton Hill station)

Arts Project Australia

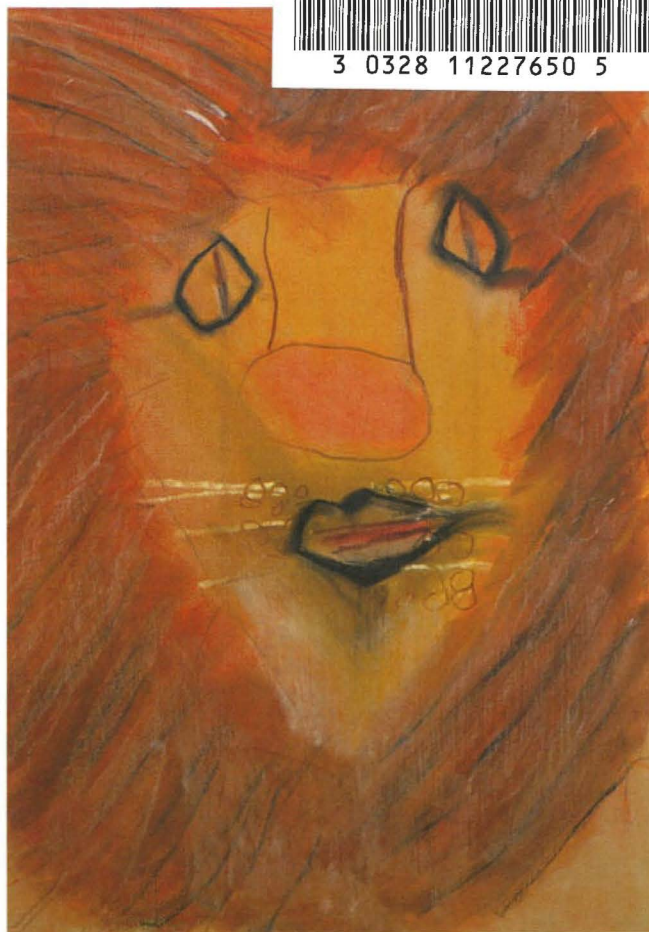
24 High Street Northcote VIC 3070
T 03 9482 4484 F 03 9482 1852
E info@artsproject.org.au
www.artsproject.org.au

Gallery hours: Mon to Fri 9am–5pm,
Sat 10am–1pm

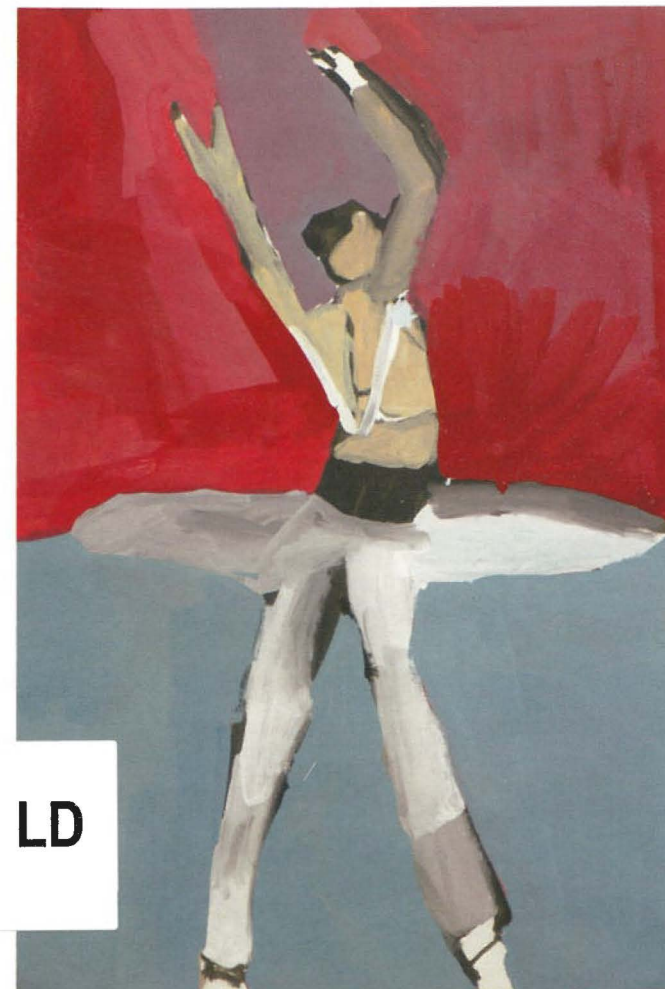
Registered No. A0008312K ABN 99 804 795 393 Arts Project Australia
is an incorporated association and a recognised charity



3 0328 11227650 5



ARTS PROJECT AUSTRALIA



LD

Visual Arts Program

LTP
700.870994
AR7V

Visual Arts Program



Program Description

Arts Project Australia is a specialist agency which supports people with disabilities to participate in the visual arts. The program is open to all age-groups from school-leavers to older adults.

The Arts Project Australia studio is staffed by professionally qualified visual artists, and caters to a wide variety of individual needs and abilities.

Participants are encouraged to explore their own personal style of visual expression and to develop their artistic skills.

For many people, art can become an important focus in their lives and a rewarding source of personal development. In some cases, art can also provide a fulfilling vocation, and Arts Project Australia provides support for people in their quest to become professional artists.

Exhibitions are central to the program and all participants have the opportunity to have their work sold and exhibited. Venues include Arts Project Australia's own gallery in Northcote, as well as a range of public and commercial galleries locally, interstate and overseas.

Entrance requirements

The program welcomes participants regardless of skills or previous experience, as long as they show an interest in art. However, for some people with high support needs, it may be necessary for them to be accompanied by their own carer or support worker.

Mode and Duration of Program

The program operates on a sessional basis, and people can choose to come as often as they like according to their level of interest or other commitments. Attendance can range from one half-day session per week through to full-time.

Program Structure

People can choose to work in any or all of the following:

- Painting
- Drawing
- Printmaking
- Ceramics
- Video animation
- 3D construction

STATE LIBRARY
OF VICTORIA

20 NOV 2012

SOURCE LD
CALL No.

LTP

700.570994

AR77

