



“Natural Imaginings”

saleFESTIVAL

Thursday 2nd August – 10th September

Mitcham City Council Gallery

Tutti Visual Arts & Design 2007

I began working with a small band of artists from Tutti in late 2005. My brief as coordinator and tutor of the Visual Arts and Design Program was open, incorporating many aspects. With support artisan Annalise Donders and sculptor Justin de Leeuws, I was to teach skills, to create a professional work environment, and to promote team work. Central to this I was to encourage each artist to develop a sense of themselves as a visual artist in their own right.

Aware of other disability arts programs in Adelaide I wanted to place my group in different territory. Eighteen months later here we are, presenting our inaugural exhibition for Sala Week 2007. It contains works which are the products of time spent persistently pursuing skills and ideas.

"Formally we used to represent things visible on earth, things we either liked to look at or would have liked to see. Today we reveal the reality that is behind visible things, thus expressing the belief that the visible world is merely an isolated case in relation to the universe and that there are many other, latent realities." (1). These words by Paul Klee, an artist deeply in touch with his intuitive response to the world, relates well to the Tutti artists. Aware of the complexities of the world, they have managed to retain their instinctive responses to the visual world around them and to their internal imaginative worlds. They have achieved this in a direct, honest and searching way.

Our theme "Nature and Imagination" was the result of time spent exploring the unique physical environment of the Minda campus. The established trees and gardens, the groves of old pine trees, and the stunning suburban coastal area behind the campus have inspired us, and lead to many varied responses to the natural world.

Jenna May's tree painting, with its textured trunk and leaves growing down the sides of branches and trunk alike, expresses an essence of "tree-ness".

Charlie Taplin's lollypop tree is delicious with its blend of shapes and colours. As he says, Charlie loves beautiful colours.

Amee Crathern's tree resembles a mosaic despite its simple elegant shape. Amee says, "painting takes you to another place".

Jasmine Jones imbues her tree with an ancient quality with its gnarled trunk and crown of glowing leaves. Jasmine is a prolific and intuitive artist and truly reflects Paul Klee's ideas of art showing "other, latent realities". (2) As she says, she loves to express herself "through colours and patterns".

Alexandra Hill's beautiful tree with its glorious interlocking leaves developed into a rich imaginative site where she could give form to the fairies that are real to her.

Tracey Pagett views the world as an exquisitely happy place with trees and animals the contented inhabitants.

Trisha Ferguson is an extraordinarily tenacious artist. Her tree, a stark silhouette with setting sun developed into an unsettling view through a suburban living room window.

Sophie Janzon's "Boys as Trees" gives a fantastic sense of life as she layers colour and pattern over and over until she is satisfied.

Kimberly Sellars exhibits patient and careful observation in her study of a pine tree while her painting of girls, flowers and a rainbow portrays a perfect, happy world in a style strongly reflecting her love of animation.

Lauren Thompson expresses her love of ornament and pattern in her painting "Rainbow Swirls". Relative newcomers Tim Cannell and James Kurtze display a love of structure in their small, exquisite paper and wire tree forms.

The production of 3D work is a vital part of our program. The masks and puppets on display reflect our ongoing investigations into the world of theatre and imagination. Made individually and as a team these objects assume a life of their own and make the shift from process and product to art.

Tutti's Visual Arts and Design Program has developed a unique community of practicing visual artists who are thrilled to be participating in SALA 2007.

[1] Paul Klee, "Theories of Modern Art", Herschel B. Chipp, University of California Press 1968, Paul Klee, "Creative Credo", 1920

[2] Ibid.

On Nature & Imagination

Tutti Visual Arts has been open for business on the Minda campus at Brighton since late 2005 and in that time has grown into a vibrant and colourful hub of activity. Thanks to the imagination and leadership of coordinator Mel Fulton, the wonderful skills and patience of sculptor Justin de Leeuw and the passionate commitment of key support worker Annalise Donders, Tutti Visual Arts is providing a professional environment where ideas can flourish, skills can grow and where each artist is able to develop their capacity for creative self expression through a range of individual and collaborative projects.

To enter this world of colourful drawings and painting and fanciful sculptures, both figurative and abstract, continually surprises and delights me for it embodies the pure creative impulse described by Jean Dubuffet in 1948 when he coined the term Art Brut or Outside Art, to describe work outside the conventional 'fine art' of the day; work which is unapologetic, accessible and free of pretension, embodying the pure creative impulse without the overlays of art history or formal training.

I am very excited about this exhibition for it represents a body of work created by a group of young artists whose capacity for immediacy, honesty and sometimes highly personal content speaks to the spirit. The theme of the exhibition draws inspiration from the natural world, especially the coastal shrubs and trees growing on the dunes near where the artists work.

This is a very exciting time for Tutti, to be celebrating ten years of work in the performing arts and at the same time to be having our very first Tutti Visual Arts Exhibition as part of SALA 2007 is a very happy coincidence.

I congratulate each and every artist who has contributed to this wonderful exhibition.

Pat Rix 2007
Tutti Artistic Director

Participating Artists

Aimee Crathern
Trisha Ferguson
Alexandra Hill
Sophie Janzon
Jasmine Jones
Jenna May
Kimberly Sellars
Tracey Pagett
Charlie Taplin
Lauren Thompson
Tim Cannell
James Kurtze

Supported by the SA Premier's Arts Partnership Fund



hs Harris Scarfe



Government of South Australia
Arts SA



• Inclusion
• Respect
• Choice



Australian Government





Charlie Taplin "Big Tree"
acrylic on canvas 61x61cm



Jenna May "Trailing Tree"
acrylic on canvas 61x61cm



Jasmine Jones "Crown"
acrylic on canvas 61x61cm



Aimee Crathern "Mosaic Tree"
acrylic on canvas 61x61cm



Tim Cannell "Pool"
acrylic on canvas 46x36cm



Trisha Ferguson "Tree of Dreams"
acrylic on canvas 61x61cm



Sophie Janson "Boys as Trees"
acrylic on canvas 61x52cm



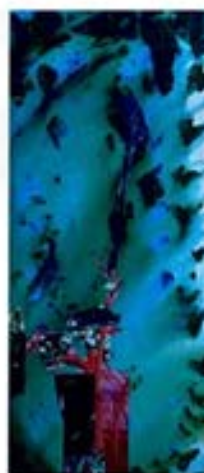
Tracey Pagett "Sunny Day"
acrylic on canvas 31x41cm



Alexandra Hill "Unicorn Magic"
acrylic on canvas 61x71cm



Kimberly Sellars "Pine Tree"
acrylic on canvas 31x41cm



James Kurtze "Rainforest"
acrylic & collage on Canvas 31x62cm



Lauren Thompson "Rainbow Swirls"
acrylic on canvas 51x51cm

Supported by the SA Premier's Arts Partnership Fund



hs Harris



Government of South Australia
Arts SA



• Inclusion
• Respect
• Choice



Australian Government

