

Our Greatest Supporter.....

"I am extremely gratified to see the EASE project up and running so successfully.

Since 1986 when my Department first provided funding assistance to Arts Access to conduct a feasibility study on an entertainment access service based around a low cost ticketing scheme, and through subsequent funding applications, I have watched with interest the development of the EASE program concept. It is good to see the 'clients' now reaping the rewards of the extensive consultation and careful planning put into that establishment period.

The reports I have received give me confidence that the service will continue to develop and will have a significant impact on the access issues surrounding Melbourne's entertainment industry."

Neil Trezise
Minister for Sport and Recreation

VENUE NOTES

continued

Facilities for the Hearing Impaired:

Two systems available

1. Induction Loop
Available in restricted areas of Concert Hall, State Theatre and Playhouse. (Not available in Studio). Use 'T' switch on hearing aids.

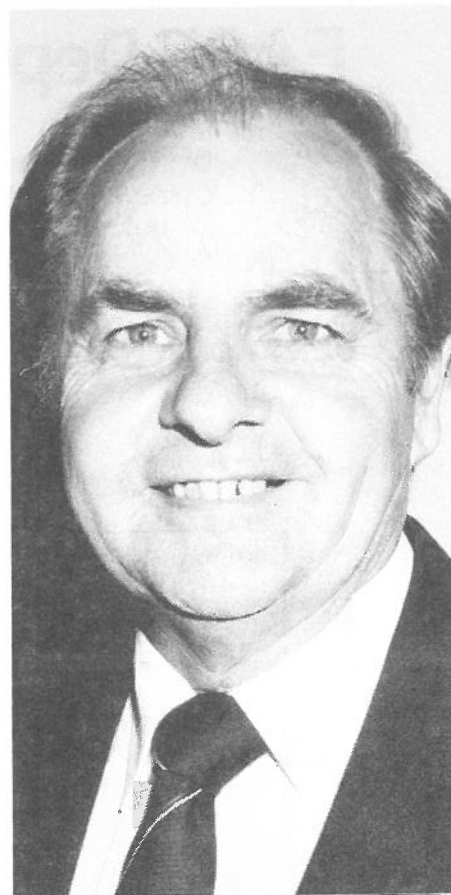
2. Infra-red Ring-of-Sound
Available in Concert Hall, State Theatre and Playhouse. Studio facility depends on seating layout
Headsets available from House Manager on arrival

Facilities for the Visually Impaired:

Guide Dogs are permitted into Concert Hall and all Theatres. An usher is on duty specifically to escort people via the lifts as required.

Helpfull Hints

* Each venue's House Manager is responsible for patrons' access to seats and facilities, if you have a specific advance request ring 617 8211. If you have any questions about the venue prior or during the performance first ask an usher and then the House Manager. Be prepared, especially in the case of the State Theatre, for a circuitous route to your seat. Make sure if possible the usher is well aware of the route required.



Arts Access and the EASE Advisory Committee would like to thank Neil Trezise, Minister for Sport and Recreation for his generous support. His foresight and that of his Department not only ensured the project came into existence but now continues to provide its invaluable services.

Postage
Paid
Australia

ARTS ACCESS SOCIETY NEWSLETTER

Registered by Australia Post
Publication No. VAW7218

If undelivered return to:

Arts Access Society Inc.
109-111 Sturt Street, South Melbourne, 3205. Australia.

Ease



ARTS
Access

Newsletter of Arts Access Society Inc. — EASE Supplement

May 1988

Where Shall We Sit?



© Mark Smith. Not to be reproduced without permission

Mark Smith has donated the above cartoon and has agreed to consider being a regular contributor. EASE extends warm thanks. Any other cartoonists please come forward!

EASE has continued to diversify. Over March and April Circus Oz proved to be the most popular show. Their performances were inspirational. There has been an increase in demand for Classical Music concerts as the benefits and delights of these programmes are becoming apparent. During the months ahead we will negotiate for more sporting events eg Gymnastics, Equestrian fixtures and Supercross.

Variety, the Spice of Life

"As members of a recreation team dealing with intellectually handicapped and disabled adults, we are constantly thrilled at the variety of outings which the EASE program provides.

On three separate occasions, groups have attended classical performances. Not only is the experience of attending a classical concert worthwhile but just the excitement of dressing more formally and extending ourselves into different roles is unquestionably valuable. We have seen

As you can see tickets supplied through this project cover a wide variety of events. It is important that we use such a valuable resource wisely. Several promoters have reported direct requests for tickets from possible EASE clients. EASE tickets are only available from our office. **Please do not approach promoters or ticket agencies for tickets at the prices quoted by this project.**

the same clients thoroughly enjoy a performance by the Melbourne Symphony Orchestra one night and equally enjoy a night of comedy or rock'n'roll.

The key to a successful recreation team lies in providing opportunities for your clients to experience a range of entertainment and variety of audiences with which they will spend the evening."

Rita Zammit
Smorgon Centre
Kew Cottages

VENUE NOTES

VICTORIAN ARTS CENTRE

(St. Kilda Road)

MELBOURNE CONCERT HALL

Seating capacity: 2,677

Wheelchair capacity: 12

People who wish to stay in their wheelchairs are placed at the rear of the stalls or circle.

The Concert Hall has light weight wheelchairs for patrons use. If this service is required ring the House Manager 617 8211 the day before going.

"Disabled" Parking

1. St. Kilda Road kerbside (set down only)
2. Two parking bays for cars with disabled stickers at South Gate entrance
3. Phone House Manager 617 8211 if any assistance is needed.

Toilets

Level 4, doors heavy, but slow closing mechanism, access good inside

Telephones

Two accessible at St. Kilda Road level

STATE THEATRE

Seating capacity 1,940

Wheelchair capacity 10

(Details as for Studio)

PLAYHOUSE THEATRE

Seating capacity: 879

wheelchair capacity: 5

(Details as for Studio)

STUDIO THEATRE

Seating capacity: 280-300

Wheelchair capacity: varies

"Disabled" Parking

1. Set down only on St. Kilda Road
2. Arts Centre Car Park, enter from Sturt St. using left lane to upper level. Parking fee applies. Ring 614 2987 for further information.

Toilets

(State Theatre: Levels 3, 5 and 6)
Doors heavy with no slow mechanism, access good inside

Facilities for the Hearing Impaired:

continued on back page

EASE FUNDING:

For the initial twelve month phase of its operation EASE has been funded by the Department of Sport and Recreation, the Myer Foundation, Lance Reichstien Foundation and Coles/Myer Ltd. Extra funding has been generously provided by The Minister for Sport and Recreation, please see back page.

AF
790.19605
E a 7

EASE aims to assist and create the opportunities for people with special needs to attend Melbourne's entertainment events by providing information, social support and incentives.

EASE also aims to encourage promoters and venue management to ensure physical access is feasible at all events within the Melbourne metropolitan region.

INFORMATION HOTLINE: 699 8497

advice about venue accessibility, what's on and booking procedures. 10.00am-4.00pm Monday to Friday.

BI-MONTHLY NEWSLETTER:

Information, articles, letters and announcements of tickets available through EASE.

TICKET SCHEME:

Low cost tickets to many entertainment events.

We would like to acknowledge the generosity over the past two months of the following: Melbourne Theatre Company, Melbourne Symphony Orchestra, Victorian State Opera, Victorian Arts Centre, Michael Edgley International, Garry Van Egmond Enterprises, CATS Productions, Circus Oz, Dennis Smith Entertainment, Mark Avery Pty. Ltd., Jon Nicholls and Adrian Bohm, Melbourne SIO Tigers, Australian Pops Orchestra, Mr Kevin Earle, and Davis Morley Pty. Ltd..

EASE STAFF:

Chris Milton, Co-ordinator

Barbara Milne

VOLUNTEERS:

Liz Smith

Janine Zandberg

Christine Duncan

Tracey Willis

Calla Peterson

FURTHER INFORMATION:

Ring 699 8497, or write to: EASE

C/- Arts Access, 109-111 Sturt Street, South Melbourne 3205

VOLUNTEER WITH EASE

We are looking for volunteers to assist with our HOTLINE. If you have a few hours per week and are interested in the issues of access and/or cinema, theatre, rock music, classical music, or sport give us a ring on 699 8497.

Arts Access Society Inc. is a non-profit organisation committed to providing access to the arts to those groups and individuals disadvantaged by physical, intellectual, emotional or financial conditions.

Please contact us if you would like to become a member of the Society.

**Arts Access Society Inc.
109-111 Sturt Street
South Melbourne 3205**

EASE HOTLINE: 699 8497

Open The Doors To Entertainment

Whether it is a concert by James Taylor at the new National Tennis Centre or the Melbourne Symphony Orchestra at the Melbourne Concert Hall it is all entertainment. The enjoyment of entertainment is an individual choice determined by taste, background and age.

The creation of the EASE project has for many people opened the doors to many types of entertainment that previously they may have been excluded from either because of lack of finances, transport or maybe lack of knowledge as to what is available in the wide and varied world of the arts, which covers such an enormous range of activities.

One of the most beneficial as well as interesting aspects of the project is the information being collected regarding the accessibility, or lack of, to many of the entertainment venues in Melbourne. Many

people who use a wheelchair or have difficulties climbing stairs have no doubt experienced the frustration at having to spend lengthy periods of time seeking an accessible entrance to the venue and a reasonable seat from which to watch the show. Information about the venue and its accessibility is being compiled so that it is available to EASE users.

Another aspect of the project is its benefit in the integration process. The more often people with disabilities are out in the community the greater the acceptance of people with disabilities.

The EASE project will continue to open up the world of entertainment to people who have previously not experienced it, so that they too can have the joy and memories, recalled for years afterwards, of Melbourne's countless events.

**Anthony Nichols
Spastic Society
(EASE Advisory Committee)**

How to get the most from EASE

Ease has been successfully operating for 8 months. Tickets come and go so quickly they don't always have time to get into the newsletter a quick phone call to the EASE Hotline will give you a comprehensive up date.

EASE is here to help you experience entertainment and continued success depends on feedback from you!

PHONE-----A chat to the volunteers on the EASE Hotline will give you full booking details and encourage you to see something new.

READ-----The newsletter can provide you with information about entertainment, access and issues. The information on these pages could be of great interest!

PLAN-----If there is a performance you would like to see let Chris know. Your interest creates a demand and we will try and obtain tickets for you.

PERSIST-----Don't be discouraged. If access proved difficult or the show was not what you expected, try again. We are more than happy to receive your comments

The National Tennis Centre

PAT CASH, KEW COTTAGES AND A HYDRAULIC LIFT

Five intellectually disabled residents from Kew Cottages and their guides all enjoyed their day out. One of the residents was an ardent Pat Cash fan and was thrilled to watch him both play and win his match. It was a rare opportunity to be involved in a live sporting event, which boasts so many well known players and celebrities.

Unfortunately access into the centre via the front entrance is not possible for people in wheelchairs or people restricted by walking aides. This was unfortunate as much of the grandeur and excitement of the centre is lost from an underground entrance.

From the car park the group made their way to a small reception area where an usher was assigned to guide the group to concourse level. It would have been very confusing to find our way without the help of an usher and this was frustrating as the group's independence was restricted. The hydraulic lift into the viewing area

could hold a maximum of two wheelchairs and an operator at any one time. The lift is small and for some of the group somewhat of a threatening experience as we were required to split up. Once on the viewing level movement for people in wheelchairs was awkward. As time in between games and sets is limited, movement via the hydraulic lift to food stalls or toilets was avoided at all costs.

While accessibility for ambulant people is good, for non-ambulant people, it is limited and removed from the public. Though the latter is something to bear in mind for future trips to the Flinders Park Tennis Centre, the ushers and administrators were extremely helpful and polite.

The group had a wonderful day and thoroughly enjoyed the opportunity given by Arts Access to be at the tennis.

**Rita Zammit
Special Education Officer
Smorgon Recreation Centre
Kew Cottages**

Write to Us

EASE Depends On Your Calls

Don't imagine that we only have tickets for those shows and events listed in our newsletter. We are always on the lookout for tickets and will negotiate for a low cost ticket on your request. Over the last few months people have enjoyed:

CIRCUS OZ, WIFE BEGINS AT FORTY, MAHLER SYMPHONY NO.8, THE SHANGHAI THEATRE, THE ROCKY HORROR SHOW, STARLIGHT EXPRESS, DEEP BELLS RING, OFF THE EDGE

Tickets Ring 699 8497

Don't Miss Your Opportunity To Enjoy:

THE POPULAR MECHANICALS

Dates: 25th May, 7th June

Venue: Russell Street Theatre

Company: Melbourne Theatre

Company

A comedy in which the clowns from Shakespeare's A Midsummers Nights Dream appear 400 years later in their own spin off show.

"One of the funniest pieces of theatre I think I have ever seen" — Angela Bennie, The Australian

DEAD SET STRAIGHT

Season: 13th, 14th, 18th-21st,

25th-28th May

Venue: Incinerator Theatre — Moonee

Ponds

Company: West Theatre Company

Commissioned by the Next Wave Festival, Dead Set Straight explores the relationship between young kids living in high rise estates and the police. These street wise kids have worked with professional actors and musicians to create a real piece of theatre that is not to be missed.

THE PEARL FISHERS

Dates: 15th and 26th November

Venue: State Theatre

Company: Victorian State Opera

Set in Ancient Celyon, Georges Bizets delightful opera overflows with beautiful arias and superb choruses complemented by a cast of Australia's finest singers.

BEEHIVE — The 60's Musical
Season: May 2nd — June 10th

(Tickets not available Friday

evenings or Saturdays)

Venue: Comedy Theatre

Promoter: Dennis Smith

Relive the greatest era in Music History as the stage is transformed into a giant juke box overloaded with hits and living images of the female singers who made it great — Diana Ross, Petula Clark and Tina Turner — "It's pure irresistible fun!"

This is just a selection. We have tickets to Melbourne Symphony Orchestra Concerts and Melbourne Theatre Company Productions. Ring us for more details. EASE tickets are only available through our office. Ticket agencies will not release tickets unless advised by EASE.

We Will Be Negotiating For:

VICTORIAN GYMNASTICS CHAMPIONSHIPS, JOHN DENVER, VFL MATCHES, SLIM WHITMAN, LADYSMITH BLACK MAMBAZO, SUPERCROSS — AND ANYTHING YOU WANT TO SEE !