

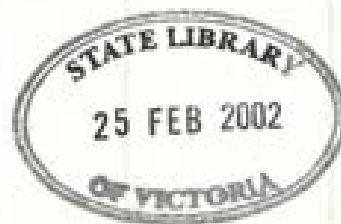
ANNUAL REPORT 2000 2001



**AF
790.19606
AR7
(2000/2001)**

Arts Access
is a member
of the
DADA
National
Network





AF
790.19606
ART7



MISSION GOALS

Arts Access provides access to arts and cultural activity for people who are disadvantaged, including people with a disability.

ARTS ACCESS

We will:

1. facilitate access to arts and cultural activities of the highest professional standards,
2. develop successful alliances, partnerships and collaborations,
3. attain broadest reach for Arts Access' programs and services,
4. utilise information and communication technologies,
5. achieve secure funding and effective operational structures.



A highlight of the year 2000-2001 has been the appointment of Nicole Beyer as Arts Access' new Executive Director. Nicole has brought an exceptional range of arts management skills and practical experience with significant parts of the Arts Access constituency. The Board is appreciative of a smooth transition and the energy and enthusiasm which have been manifest throughout the year.

CHAIR'S MESSAGE

Of note has been the successful relaunch of the Arts Access website. This has been reconfigured to meet the special needs of our clients, and is proving to be a much used means of information about accessible arts. In looking to the future, Arts Access is building alliances with tertiary institutions, an ever-widening range of arts venues, arts providers and associations, and more than ever being recognised nationally as the organisation which places creativity at the centre of life.

My sincere thanks to colleagues on the board, to all of the staff, artists, support workers, participants, and to all of our partner organisations and funding bodies who together, have made the Arts Access year so successful.

Alan Moor
Chair



My first day of work at Arts Access was the AGM last year – the 28th November. It was a great time to start, as I met all of the board, artists, families, friends, and of course all of the staff. It was all very impressive and I vaguely wondered why they needed an Executive Director.

I haven't stopped being impressed, but I've managed to figure out my role, and I reckon that together, this team of people has had a great year.

When Jane left the organisation in September, she left the place in great shape (thank-you, dear Jane). I've been able to come in and settle in slowly – no need for major restructuring or planning. What we've done in this last year is tweak things and start to capitalise on the strengths of the organisation. Financially, we made a good surplus, of over \$9,000. (Accounting standards dictate that we include a depreciation of our freehold improvements, which makes the bottom line look like it's in deficit for the next five years, after a huge surplus (capital grant) last year, so we adjust for that to calculate our relative performance).

EXECUTIVE DIRECTOR'S MESSAGE

The Access Program has really taken off in the last year, thanks to Fiona and Caroline, with several new partnerships in place, and a plan for further expansion this coming year. The Artistic Program has also been busy, thanks to Ruth, Jo and Anne, with its usual dozen or so projects happening at once, and another dozen in the pipeline. It's quite amazing how much work gets done here. Jenny is nearly full-time in the EASE ticket service, helping hundreds of people a week; Suzie Q and Edwina run a friendly and efficient front desk; and Simon and Crien make sure all the admin and operations are as smooth as possible, and the staff as happy as possible. Ashley and Rachel have both left their marks here and we will miss them both. Thanks also to Penelope, Anne C, Claire B and all of the other casuals and volunteers, and all of the artists and support workers. Many thanks to all the board members, but especially to Alan who has been a great support for me in my first year. I am looking forward to many happy years ahead with this gorgeous bunch of people.

Nicole Beyer
Executive Director

Contract Workers

Anne Cohen
Penelope Stewart
Claire Baddeley

| Executive Director | Finance Manager | Office Manager | Artistic Program Manager | Access Program Manager | Training and Development Coordinator |
|---|-----------------|--|--------------------------|------------------------|--------------------------------------|
| Nicole Beyer (Jane Haley until Sep 00) | Simon Gould | Crien Gehrke (Rachel Devine May/June) | Ruth Whittingham | Fiona Hanrahan | Caroline Bowditch |



ARTS ACCESS STAFF



| Project Coordinator | Project Coordinator | Administration Officer/ Newsletter Editor | Administration Officer | EASE Officer | PR Manager |
|---------------------|---------------------|---|------------------------|---------------|------------------------------|
| Jo Cohen | Anne Riggs | Edwina Exton | Suzanne O'Neill | Jenny Penhall | Ashley Heenan (until Feb) |

Chair

Alan Moor,
Director, Performance
Improvement Seminars
and Conferences.
Background in adult
education, publishing.

Treasurer

Cecily Tange,
Finance Director,
Melbourne Theatre
Company. Background
in finance.

Deputy Chairs

Robyn Charwood,
Executive Director,
National Heart
Foundation.
Background in public
health nutrition.

Colin Pidd,
Director, BTL Group.
Background in
management
consultancy.
(Until November).



ARTS ACCESS BOARD

Members

Carl Carthy, Marketing and Development Manager RSPCA. Background in Marketing and Fundraising in both the private sector & for not for profit organisations.

Ian Pidd, Theatre & Event Director. Chair Melbourne Fringe Festival. Background in Community Cultural Development and Disability Arts.

Andrew Sanderson, Director, Morris-Walker Disability Management. Background in Disability Management.

Mark Robinson, Marketing Manager, GAPCo, Brotherhood of Saint Laurence. Background in business development, training & industrial relations.

Sandra Taylor-Bowman, Director, Invetech. Background in marketing and public relations.

Jane Trengove, Professional practicing artist. Background in Visual Arts, and Disability Advocacy.

Catherine Van Wilgenburg, Architecture and Visual Arts practice including Art Commissions, Gallery, Building Colour Consultancy and Personalised Colour Services.

and at other times, in turmoil...

⑤

Details for other states:

DADAA National Network
Pier 4, The Wharf
Hickson Rd, Walsh Bay
Sydney, NSW 2000
Phone: 02 9251 6844

DADAA (WA)
21 Beach St
Fremantle WA 6160
Phone: 08 9438 6616

DADA ACT
19 Gorman House Arts Centre
Ainslie Ave, Braddon, ACT 2612
Phone: 02 6230 6505

Arts in Action
101 Halifax Street
ADELAIDE, SA 5000
Phone: 08 8224 0799

Access Arts
Level 1 Stores Building
Brisbane Powerhouse
119 Lamington Street
New Farm QLD 4005
Phone: 07 3358 6200

Accessible Arts
Pier 4, The Wharf
Hickson Rd
WALSH BAY, NSW 2000
Phone: 02 9251 6499

Arts 'R' Access
C/o 17 Electra Place
Morningside, TAS 7018
Phone: 03 6245 0533



DADAA NATIONAL NETWORK

Arts Access is a member of the DADAA (Disability in the arts, Disadvantage in the arts, Australia) National Network, the Australia wide affiliation of arts organisations working to improve access to and participation in the arts for people with disabilities and experiencing disadvantage.

In October, Ruth Whittingham attended the DADAA AGM in Sydney and in May, Nicole and Ruth attended the two day DADAA Annual Conference along with the other DADAA Directors who run organisations equivalent to Arts Access in the other states. This annual conference is a great way to share information, set new directions and cook up new projects. This year the Conference was held in Maroochydore, so delegates could attend the PAKTI Festival happening over the same weekend.



ARTISTIC PROGRAM REPORT

Art Day West

Highlights of Art Day West this year include:

The Bodies Project – a biographical, large scale visual artwork of each person;

The Songs – personalised songs about each person to complement the visual artwork; and Expo banner-the commissioning of the Western Region Respite banner, which was displayed on the stage in Williamstown Town Hall. There were also some professional development excursions and sessions for staff and participants, including the band Urban Sprawl, a Back to Back Theatre performance, and the band The Hacketts.

Artists: Lyndsay Mason, Claire Teisen. Guest artist, Jenny Watkins. Support Workers: Dee Buman, David Holmes, Kitty Owens, Eva Marks (2000), Leanne Lovett.

Art Day South

The Home Project - music and movement workshops based on individual's concepts of home, which developed into material for the end of the year performance.

Personal landscapes - visual arts project investigating themes around home and place, which expanded into studies of the physical landscape.

Soundscapes and photographs - audio recorders and cameras were used to document soundscapes and pictures of the local environment and community.

The group collated their visual artwork from the year into a mini-magazine, which they entitled Mopapa Zine.

The end of year performance, "How 'bout that!", coinciding with an exhibition of the photographic work and the launch of the Zine showed to a large and enthusiastic audience. In 2001, costume making and performance installation workshops were facilitated by new artists, Kate Sulan and Lindy Macauley.

Artists: Katrine Gabb, Andrew Tranter, Kate Sulan, Lindy Macauley. Support Workers: Rick Doyer, Denise Webber, Shannon Foster, Lami Bishop, Nilgun Guven, Emma Barrance.

Art Day South Easter Holiday Program

Arts Access ran a respite program over the Easter break, for some regular Art Day South participants and some new participants. Three different workshops were run: Performance and Costume Making; Printmaking and Circus Skills.

Artists: Dominique Azoulay, Kim Baston, Lindy Macauley, Amanda Owen, Gali Weiss, Dianne Zacanovsky. Support Workers: Emma Barrance, Rick Doyer, Nilgun Guven, Denise Webber.

SMAC - Saturday Morning Art Classes. Visual arts classes and multi media arts classes for beginners, emerging and professional artists with a mental health issue:

- Visual Arts Classes

Term 3 2000 Coburg; Artists: Ev Vyhna and Dianne Zacanovsky

Term 4 2000 Box Hill; Artists: Gali Weiss and Dianne Zacanovsky

- Multi Media Classes

Term 4 2000 Fitzroy; Multi Media Specialists: John Pierce and Kelly O'Demsey

Artists: David Harley and Prudence Flint

Term 1 2001 Fitzroy; Multi Media Specialists:

John Pierce and Melissa Delaney

Artist: David Harley

Supported Residential Services Arts Programs

Three visual and performing arts programs for residents living in Supported Residential Services. The residents include frail, elderly people with a disability and young people with drug related issues.

-Royal Avenue Supported Residential Service, Essendon

A fifteen week visual arts program culminating in an exhibition "Stories, Happenings and Event". Artists: Karina Doughty and Dianne Zacanovsky.

-Brentine Supported Residential Services, Melton

A fifteen week performing arts program culminating in "A Concert Extravaganza" which featured residents performing a range of songs from the old days.

Artists: Charles Robinson & Caroline Spiers

-Western Lodge Supported Residential Services, Footscray

A fifteen week visual arts program whereby residents and artists create artwork in the foyer of the Service. This program will be completed in August 2001.

Artists: Christine Mooney & Nilgun Guven

Koori BreastScreen Victoria Project

With funding from BreastScreen Victoria, Arts Access facilitated a community based arts project with the Victorian Aboriginal Women's Health Service, reflecting Indigenous women's wellbeing. Two Koori artists worked with 15 Koori women to make and decorate a mannequin that was named Merindah Bibi (Beautiful Women's Breasts). BreastScreen Victoria showcased the artwork in a breast health promotion poster. Artists: Julie Bamblett and Sharon Hodgson.

BreastScreen Victoria - Artists Commission

BreastScreen Victoria provided funding to Arts Access to commission ten emerging and professional artists who had previously been employed on five community based arts projects in 1999 and 2000. The artists each created an artwork that reflected their own interpretation of women's wellbeing. Artists: Jane Trengove, Eve Glenn, Prudence Flint, Christine Mooney, Julie Bamblett, Gali Weiss, Sharon Hodgson, Deidre Outhred, Frances Guerin and Lisa Mitchell.

Synesthesia Creative Development Two and Showcase

Following on from the first Synesthesia Creative Development (June 2000) Arts Access, Handspan Visual Theatre and the Melbourne Symphony Orchestra further developed the collaborative artwork. Co-Directors David Bell and Simone Clifford worked with performers with and without disabilities to develop and create artistic ideas exploring the concept of synesthesia, which led to a public showing as part of the Behind The Scenes program in the Melbourne Festival 2000. More than 150 people attended the one off performance at Gasworks Theatre.

Artistic Director: David Bell

Choreographer: Simone Clifford

Puppetry Consultant: Michele Fifer

Sound Artist: David Franzke

Stage Manager: Natasha Marich

Performers: Marc Brew, Annabelle Dickens, Keenan Hill,

Trina Gaskill, John Acaro, Gillian Howell, Andrew Moon,

Eve Newsome. (continued over)

ArtAbility - Centenary of Federation Parade

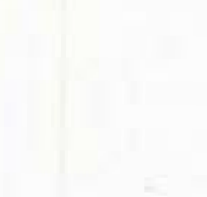
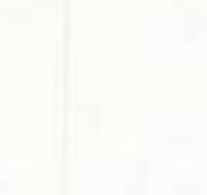
On Sunday 6 May, 2001 Arts Access presented a stunning entry for the Centenary of Federation Parade entitled ArtAbility - Expect the Unexpected! Participants included over 150 people with disabilities, mental health issues, and the deaf community, who marched down Swanston Street representing important issues for their community from the past hundred years.

Beginning with "the big white blob" representing 1900's institutionalisation, the entry then moved onto pink 1950's Beauty Pageant contestants and orange protesters reflecting 1970's Disability Rights and the continuing accommodation issues for people with Acquired Brain Injury. Then a yellow "Transport Queen" rode on top of a winged Maxicab (in her wheelchair) representing 1990's Disability Discrimination Act and transport accessibility while her "Transport Angels" danced to Kylie's "Locomotion" and "I Should Be So Lucky!" Grooving closely behind were multicoloured "drag celebrities", fantasy puppets and "sign singers" all celebrating the diversity of 2000. Finishing up with a huge mobile map of Australia spelling "sorry" as the final message acknowledging our Aboriginal community and representing reconciliation for 2001 and beyond...

By joining 7,500 people in the parade and 300,000 spectators, and with some significant airtime on Channel 7, the ArtAbility project was a major public event for Arts Access and provided a fabulous promotion opportunity for our organisation and the collaborative partner organisations.

Participants and Partners: Director, Jo Cohen; Artistic Consultant, Danielle von der Borch; Art Day South, Art Day West, Break Out Dance, Weave Movement Theatre, Dramability, Just Us, Deaf Signing Choir, Splash Arts Studio, Ian Pidd and Maggie Maguire and Associates.

"The group had a wonderful experience in the Parade. Something they will never forget!" Debra Lummis, Deaf Sign Singing Choir, ArtAbility Parade Entry



Other Highlights:

*Art Day South participant, Jeffrey Phillips, was chosen for the Avant Card, Call for Artists Project. 40,000 cards of Jeffrey's artwork "The Insects" were printed and distributed.

*Art Day Coordinator, Jo Cohen attended the Paralympic Arts Festival in October to attend the opening of the international illustrated poetry exhibition, One Heart, One World which included Art Day South participant, Rebecca Clarke's poem, illustrated by indigenous artist, Gary Lang.

*Arts Access was represented on the Deaf Arts Network Steering Committee and was actively involved in the development of the Network. The Deaf Arts Network will be auspiced by and housed at Arts Access from July 2001.

*As a result of the HeArt and Soul: Small Town Voices Search Conference presented by Arts Access in March 2000, Tallangatta was identified as a regional community in need of an arts project that would aim to provide the young people with artistic experiences, with long-term positive effect for the broader community.

Arts Access, in collaboration with Tallangatta Health Service and the Tallangatta Secondary College has begun the research, planning and coordinating of the project, to start in July 2001.

Ruth Whittingham
Artistic Program Manager



ACCESS PROGRAM REPORT

Many people are unable to participate in the arts due to the physical design of arts venues, lack of suitable services or facilities or high ticket prices. The Access Program works to improve access to arts in Victoria through training, audience development projects, and the EASE ticket service.

EASE Ticket Service

In partnership with presenters, over 3,000 free tickets and 18,000 reduced priced tickets were distributed through the ticket service this year.

EASE also continues to provide detailed access information and a specialised seating service for people whose choice of seating is restricted by physical or sensory impairment. Some of the new services introduced by EASE this year include a script lending service for people who are hearing impaired and the provision of information on access and events through our website and by email. Thanks to all of the myriad EASE partners.

EASE partners:

Melbourne Theatre Company, Playbox, Australian Ballet, Melbourne Symphony, Opera Australia, Australian Pops Orchestra, Annie, Mamma Mia, Victorian Arts Centre, Chapel off Chapel, Darebin Arts Centre, Mikado, Always Patsy Kline, Frankston Cultural Centre, Clocktower Centre, Hoyts Cinemas, Mollisons Consulting, Comedy Festival, Melbourne Festival, IMAX Theatre, Crown Entertainment Complex, National Trust, Palace Cinemas, Picture This, Feld Entertainment, Australian Chamber Orchestra, Geelong Performing Arts Centre, Whitehorse Performing Arts Centre, Athenaeum Theatre, Chunky Move, Circus Oz, Bangarra Dance, Mariner Productions, Essgee Entertainment, Regent Theatre, Princess Theatre, Bell Shakespeare, International Management Group, International Touring Company, Tennis Australia, Melbourne Olympic Parks, The Production Company, International Piano Festival, Geminiani Orchestra, Sidney Myer Music Bowl, Sandy Beach Centre, Melbourne International Flower and Garden show, Melbourne Tigers, Melbourne Magic, Ticketek, Ticketmaster, Garry Ginivan Attractions, St Martins, Showbiz, Jacobsen Entertainment, Australian Events Marketing, Victorian Cricket Association, Monash / Alexandra Theatre, Gasworks, Fred Wallace, Avery Events, Oxford Children's Theatre, The Universal Theatre, The Concert Corporation, Greenroom Awards, Fringe Festival.

Highlights of the Audience Development Projects & Partnerships

Vision Australia

Arts Access is working in partnership with Vision Australia to address access issues for people who are blind or vision impaired. This includes the provision of Audio Description; touch tours, tactile displays, information in alternate print formats and reserved seating.

VicDeaf

Arts Access has been working in partnership with VicDeaf to improve access to arts and entertainment events for the Deaf community through the provision of sign interpreted performances. We also co-managed a research project to identify barriers to participation in the arts for Geelong's Deaf Community. The Comedy Festival Roadshow at the Geelong Performing Arts Centre was Auslan interpreted and was a great success.

Melbourne Festival Access Project

Arts Access worked with the Melbourne Festival to improve issues of accessibility for the Federation Festival in May 2001. The work included venue visits to collect information on services and facilities; improved access information and symbols in the Festival guide and alternate formats of the guide including Braille, text only and audio tape; media guidelines; disability awareness briefings for ticketing and festival staff; and Sign Interpreting, Audio Description and Guided Touch tours for a number of Festival events.

Our Nation On Parade

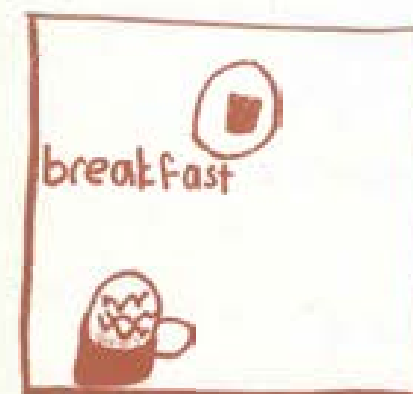
Arts Access worked with Maggie Maguire and Associates to ensure a high level of access for people with a disability for the Federation Parade in May, including accessible seating areas, assessment of the parade route, and inclusion of access information in the parade guide.

Arts Victoria

Arts Access facilitated the review of Arts Victoria's Disability Action Plan and we are currently providing disability awareness training for all Arts Victoria staff.

Australian Ballet Partnership

The Australian Ballet's audience development program provided an opportunity for nearly 1000 disadvantaged children to attend educational performances with the ballet free of charge.



Companion Card

Arts Access hosted a forum at Melbourne and Olympic Park for the arts and entertainment industry, in support of the Companion Card Scheme. Key speakers included Hon. Justin Madden, Minister Sport and Recreation, Acting Federal Human Rights and Equal Opportunity Commissioner Susan Halliday, and Equal Opportunity Commissioner Diane Sisely from Victoria.

I would like to thank Jenny and Penelope for all their hard work in the ticket service over the last twelve months. Thanks also to the dedicated and well-trained group of volunteers lead by Marjory West from the Vision Australia Foundation, and thank-you to Lynn Gordon for her work as project officer.

Fiona Hanrahan,
Access Program Manager

"I am glad an organisation like EASE is around because if it wasn't I probably wouldn't have started to enjoy theatre as much as I do now, I wouldn't have thought for a moment I was able to enjoy it – so I want to thank whoever had that brilliant idea to start EASE it was a wonderful idea! Thanks again to you all." EASE member.

INFORMATION ADVOCACY & REFERRALS

Arts Access is funded by the Department of Human Services to provide an information service to people with disabilities wanting to access the arts. This includes over 10,000 telephone and email enquiries per year, a quarterly newsletter, a comprehensive website, regular EASE updates, a catalogued resource collection, and information in alternate print and audio formats. It also includes Committee Representation by various Arts Access staff, helping other organisations or groups to set up arts programs or run one-off arts projects.

Last year, we also received funding from Vic Health to develop an online artists register. We launched the register in May, and it is already proving a great resource for employers to use to find the right artist for their particular project. Go and check it out! www.artsaccess.com.au/engage

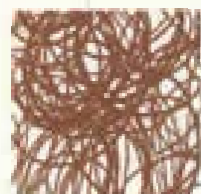
"Thankyou for organising the Easter Holiday Program. My favourite was the circus. I found the linocuts hard but I liked being a tree." Easter Holiday Program Participant



1



2



3



4



5



6



7



8



8



9

Statement by Committee Members

I, in the opinion of the Committee of Arts Access Society Incorporated:

a) the financial statements and notes, set out on pages 14 to 16, present fairly the financial position of Arts Access Society Incorporated as at 30 June 2001 and its performance, as represented by the results of its operations, for the year ended on that date; and

b) there are reasonable grounds to believe that Arts Access Society Incorporated will be able to pay its debts as and when they become due and payable.

Signed in accordance with a resolution of the Committee and signed before and on behalf of the Committee by:

President

Treasurer

22/10/01

Dated

22/10/01

Dated

FINANCES

Statement of Financial Performance For the year ended 30 June 2001

| | Note | 30 June 2001 | 30 June 2000 |
|--|------|-----------------|-----------------|
| | | \$ | \$ |
| Revenue from sale of goods | 3 | 181,993 | 151,556 |
| Revenue from contributions | 3 | 694,690 | 594,111 |
| Other revenues from ordinary activities | 3 | 11,099 | 10,909 |
| Total revenue | | 887,782 | 756,576 |
| Cost of goods sold | | 162,583 | 136,023 |
| Project costs | | 129,077 | - |
| Employee expenses | | 366,839 | 283,097 |
| Occupancy expenses | | 47,565 | 41,838 |
| Depreciation expenses | | 52,783 | 47,670 |
| Other expenses | | 150,965 | 97,691 |
| Surplus/(deficit) from ordinary activities before related income tax expense | 4 | (22,050) | 150,257 |
| Income tax expense relating to ordinary activities | | - | - |
| Surplus/(deficit) from ordinary activities after related income tax expense | | (22,050) | 150,257 |
| Net Surplus/(Deficit) | | (22,050) | 150,257 |

Statement of Cash Flows For the year ended 30 June 2001

| | Note | 30 June 2001 | 30 June 2000 |
|---|--------|-----------------|-----------------|
| | | \$ | \$ |
| Cash flows from operating activities | | | |
| Cash receipts in the course of operations | | 874,828 | 758,303 |
| Cash payments in the course of operations | | (839,232) | (561,630) |
| Interest received | | 484 | 10,700 |
| Net cash provided by operating activities | 17(i) | 36,080 | 207,373 |
| Cash flows from investing activities | | | |
| Payments for property, plant and equipment | | (10,148) | (270,254) |
| Net cash provided by/(used in) investing activities | | (10,148) | (270,254) |
| Net increase/(decrease) in cash held | | 25,932 | (62,881) |
| Cash at the beginning of the financial year | | 181,954 | 244,835 |
| Cash at the end of the financial year | 17(ii) | 207,886 | 181,954 |

Statement of Financial Position As at 30 June 2001

| | Note | 30 June 2001 | 30 June 2000 |
|-------------------------------------|------|-----------------|-----------------|
| | | \$ | \$ |
| Current assets | | | |
| Cash | 5 | 207,886 | 181,954 |
| Receivables | 6 | 17,537 | 5,067 |
| Inventory | 7 | 5,152 | 2,734 |
| Prepayments | 8 | 3,906 | 703 |
| Total current assets | | 234,481 | 190,458 |
| Non-current assets | | | |
| Property, plant and equipment | 9 | 200,097 | 242,732 |
| Total non-current assets | | 200,097 | 242,732 |
| Total assets | | 434,578 | 433,190 |
| Current liabilities | | | |
| Payables | 10 | 1,304 | 3,809 |
| Employee entitlements | 11 | 32,583 | 26,631 |
| Provisions | 12 | 17,716 | 12,909 |
| Income in advance | 13 | 173,948 | 160,084 |
| Other | 14 | 854 | 234 |
| Total current liabilities | | 226,405 | 203,667 |
| Non-current liabilities | | | |
| Provisions | 12 | 700 | - |
| Total non-current liabilities | | 700 | - |
| Total liabilities | | 227,105 | 203,667 |
| Net assets | | 207,473 | 229,523 |
| Members funds | | | |
| Accumulated surplus brought forward | | 229,523 | 79,266 |
| Surplus/(deficit) this year | | (22,050) | 150,257 |
| Total members funds | | 207,473 | 229,523 |

These statements are to be read in conjunction with the notes set out on pages 15 and 16.

Notes to the Financial Statements

1. Statement of significant accounting policies

The significant policies which have been adopted in the preparation of this financial report are:

a) Basis of preparation

The financial report is a special purpose financial report which has been prepared specifically to satisfy the financial reporting requirements of the members of Arts Access Society Incorporated, the Society.

The Committee has determined that the Society is not a reporting entity as defined in Statement of Accounting Concepts 1: Definition of the Reporting Entity. The financial report has been prepared in accordance with all applicable accounting standards and other mandatory professional reporting requirements, as deemed necessary by the Committee, with the exception of the following:

- AAS 22 Related Party Disclosures; and

- AAS 33 Presentation and Disclosure of Financial Instruments.

The financial report has been prepared on the basis of historical costs and except where stated, does not take into account changing money values or current valuations of non-current assets. These accounting policies have been consistently applied and, except where there is a change in accounting policy, are consistent with those of the previous year.

b) Reclassification of financial information

Some line items and sub-totals reported in the previous financial year have been reclassified and repositioned in the financial statements as a result of the first time application on 1 July 2000 of the revised standards AAS 1 Statement of Financial Performance, AAS 37 Financial Report Presentation and Disclosure and the new AAS 36 Statement of Financial Position.

Adoption of these standards has resulted in the transfer of the reconciliation of opening to closing retained profits from the face of the statement of financial performance to Note 16.

c) Revenue recognition

Revenues are recognised at fair value of the consideration received net of the amount of goods and services tax (GST). Exchanges of goods or services of the same nature and value without any cash consideration are not recognised as revenues.

Sale of goods

Revenue from the sale of goods is recognised (net of returns, discounts and allowances) when control of the goods passes to the customers.

Contributions

Revenue from contributions is recognised in proportion to the stage of the completion of the project when the project can be reliably measured.

Interest revenue

Interest revenue is recognised as it accrues, taking into account the effective yield on the financial asset.

d) Taxation

The Society holds an exemption and is therefore is not liable to pay income tax on any surplus that accrues.

e) Provision for doubtful debts

The collectibility of debts is assessed at balance date and specific provision is made for any doubtful accounts.

f) Property, plant and equipment

Items of property, plant and equipment are initially recorded at cost and depreciated over their estimated useful lives using the straight line method.

The carrying amount of fixed assets is reviewed annually by the Committee to ensure it is not in excess of the recoverable amount of the assets.

Leasehold improvements are amortised over the shorter of either the unexpired period of the lease or the estimated useful life of the improvement.

g) Income in advance – moneys held for specific purposes
Unexpended grant or trust income in respect of specific projects and activities is treated as deferred income (a liability) at balance date.

h) Employee entitlements

Wages, salaries and annual leave

The provisions for employee entitlements to wages, salaries and annual leave represents the amounts which the Society has a present obligation to pay resulting from employees' services provided up to balance date. The provisions have been calculated at nominal amounts based on current wage and salary rates and includes related on-costs.

Long service leave

The provision for employee entitlements to long service leave represents the present value of the estimated future cash outflows to be made resulting from employees' services provided up to balance date.

i) Goods and Services Tax

Revenues, expenses and assets are recognised net of the amount of goods and services tax (GST), except where the amount of GST incurred is not recoverable from the Australian Tax Office (ATO). In these circumstances the GST is recognised as part of the cost of acquisition of the asset or as part of an item of the expense.

Receivables and payables are stated with the amount of GST included. The net amount of GST recoverable from, or payable to, the ATO is included as a current asset or liability in the statement of financial position.

Cash flows are included in the statement of cash flows on a gross basis. The GST components of cash flows arising from investing and financing activities which are recoverable from, or payable to, the ATO are classified as operating cash flows.

2. Segment information

The Society operates in the arts sector whereby it facilitates opportunities for people with disabilities to participate in the cultural and artistic life of the community within Australia.

3. Revenue from ordinary activities

| | 30 June 2001 | 30 June 2000 |
|------------------------------|-----------------|-----------------|
| Sale of goods revenue | \$ | \$ |
| from operating activities | 181,993 | 151,556 |
| Revenue from contributions | | |
| Income for refurbishment | | 189,921 |
| Department of Human Services | 410,710 | 174,156 |
| Arts Victoria | 100,000 | 75,000 |
| Australia Council | 49,998 | 50,000 |
| Other | 50,084 | 48,097 |
| Project fees | 83,898 | 56,937 |

Other revenues:

| | | |
|----------|--------|--------|
| Interest | 11,099 | 10,909 |
|----------|--------|--------|

| | | |
|--|---------|---------|
| Total revenue from ordinary activities | 887,782 | 756,576 |
|--|---------|---------|

4. Surplus/(deficit) from ordinary activities before income tax expense

Surplus/(deficit) from ordinary activities before income tax expense has been arrived at after charging/(crediting) the following items:

| | | |
|---|---------|---------|
| Cost of goods sold | 163,583 | 136,023 |
| Net expense for movement in provision for employee entitlements | 8,207 | 6,940 |
| Depreciation of property, plant and equipment | 52,783 | 47,670 |
| Assets written off/scrapped | | 8,054 |
| Bad debts written off to the profit and loss account | | 907 |

| 5. Cash | 30 June 2001 | 30 June 2000 |
|-----------------------|-----------------|-----------------|
| | \$ | \$ |
| Cash on hand | 1,814 | 250 |
| CBA Operating Account | 37,877 | 166,749 |
| ANZ V2 | 2,949 | 2,807 |
| CBA Deposit Holdings | 12,862 | 12,148 |
| CBA Deposit Account | 152,384 | |
| | 207,886 | 181,954 |

6. Receivables

| | | |
|------------------------------------|---------|---------|
| Trade debtors | 8,340 | 6,485 |
| Less: provision for doubtful debts | (1,627) | (1,627) |
| Interest receivable | 10,824 | 209 |
| | 17,537 | 5,067 |

7. Inventory

| | | |
|---------|-------|-------|
| Tickets | 5,152 | 2,734 |
|---------|-------|-------|

8. Prepayments

| | | |
|-------|-------|-----|
| Rent | 2,748 | |
| Other | 1,158 | 703 |
| | 3,906 | 703 |

9. Property, plant and equipment

| | | |
|----------------------------------|-----------|-----------|
| Leasehold improvements at cost | 288,916 | 284,542 |
| Less: Provision for depreciation | (158,415) | (126,434) |
| | 130,501 | 158,108 |

| | | |
|---|-----------|-----------|
| Furniture, fittings and equipment at cost | 168,048 | 162,274 |
| Less: Provision for depreciation | (116,906) | (100,718) |
| | 51,142 | 61,556 |

| | | |
|----------------------------------|---------|---------|
| Motor vehicle at cost | 27,139 | 27,139 |
| Less: Provision for depreciation | (8,685) | (4,071) |
| | 18,454 | 23,068 |

| | | |
|-------------------------------------|---------|---------|
| Total property, plant and equipment | 200,097 | 242,732 |
|-------------------------------------|---------|---------|

10. Payables

| | | |
|----------|-------|-------|
| Accruals | 1,304 | 3,809 |
|----------|-------|-------|

11. Employee entitlements

| | | |
|---------------------------|--------|--------|
| Accrued wages | 16,852 | 10,538 |
| Payroll deduction payable | | 173 |
| PAYE tax payable | | 6,147 |
| Accrued superannuation | 7,781 | 7,658 |
| Salary sacrifice | 7,950 | 2,115 |
| | 32,583 | 26,631 |

Number of employees

| | | |
|-------------------------------------|----|----|
| The number of employees at year end | 30 | 41 |
|-------------------------------------|----|----|

12. Provisions

| | | |
|--------------------|--------|--------|
| Current | | |
| Annual leave | 17,716 | 12,909 |
| Non current | | |
| Long service leave | 700 | |

13. Income in Advance

| | | |
|-------------------|---------|---------|
| Income in Advance | 173,948 | 160,084 |
|-------------------|---------|---------|

14. Other

| | | |
|-------------|-----|------|
| GST Payable | 792 | (69) |
| Other | 62 | 303 |
| | 854 | 234 |

| 15. Auditors remuneration | 30 June 2001 | 30 June 2000 |
|---------------------------|-----------------|-----------------|
| | \$ | \$ |

Audit services:

Auditors of the Society - KPMG

Other services:

Auditors of the Society - KPMG

16. Retained surplus

| | | |
|---|----------|---------|
| Retained surplus/(deficit) at the beginning of year | 229,523 | 79,266 |
| Net surplus/(deficit) attributable to members | (22,050) | 150,257 |
| Retained surplus/(deficit) at end of year | 207,473 | 229,523 |

17. Notes to the Statement of Cash Flows

(i) Reconciliation of cash

For the purposes of the Statement of Cash Flows, cash includes cash on hand and at bank and short term deposits at call, net of outstanding bank overdrafts. Cash as at the end of the financial year as shown in the Statement of Cash Flows is reconciled to the related items in the balance sheet as follows:

| | | |
|--------------|---------|---------|
| Cash at Bank | 207,886 | 181,954 |
|--------------|---------|---------|

(ii) Reconciliation of operating surplus after income tax to net cash provided by operating activities

| | | |
|----------------------------------|----------|---------|
| Operating surplus/(deficit) | (22,050) | 150,257 |
| Add/(less) non-cash items | | |
| Assets write off/scrapped | | 8,054 |
| Depreciation | 52,783 | 47,670 |

| | | |
|--|---------------|----------------|
| Net cash provided by operating activities before change in assets and liabilities | 30,733 | 205,981 |
|--|---------------|----------------|

Change in assets and liabilities during the financial year:

| | | |
|--|----------|----------|
| (Increase)/decrease in inventories | (2,418) | 3,072 |
| (Increase)/decrease in prepayments | (3,203) | (295) |
| (Increase)/decrease in trade debtors | (12,470) | 13,552 |
| (Decrease)/increase in accounts payable | (2,505) | (5,897) |
| (Decrease)/increase in provisions | 4,807 | (2,148) |
| (Decrease)/increase in employee entitlements | 6,652 | 15,665 |
| (Decrease)/increase in income in advance | 13,864 | (18,560) |
| (Decrease)/increase in other liabilities | 620 | (3,997) |

| | | |
|--|---------------|----------------|
| Net cash provided by/(used in) operating activities | 36,080 | 207,373 |
|--|---------------|----------------|



3 0328 10681215 8

Independent Audit Report to the members of Arts Access Society Incorporated

Scope

We have audited the financial report of Arts Access Society Incorporated ("the Society") for the financial year ended 30 June 2001, being a special purpose financial report, consisting of the statement of financial performance, statement of financial position, statement of cash flows, and accompanying notes 1 to 17. The members of the Committee are responsible for the financial report. The members of the Committee have determined that the accounting policies used and described in Note 1 to the financial statements are appropriate to meet the needs of the members. We have conducted an independent audit of this financial report in order to express an opinion on them to the members of the Society. No opinion is expressed as to whether the accounting policies used, and described in Note 1 to the financial statements, are appropriate to the needs of the members.

The financial report has been prepared for distribution to members. We disclaim any assumption of responsibility for any reliance on this report, or on the financial report to which it relates, to any person other than the members, or for any purpose other than that for which it was prepared.

Our audit has been conducted in accordance with Australian Auditing Standards. Our procedures included examination, on a test basis, of evidence supporting the amounts and other disclosures in the financial report, and the evaluation of significant accounting estimates. These procedures have been undertaken to form an opinion whether, in all material respects, the financial report is presented fairly in accordance with the basis of accounting described in Note 1 to the financial statements, so as to present a view which is consistent with our understanding of the Society's financial position and performance, as represented by the results of its operations and its cash flows. These policies do not require the application of all Accounting Standards nor other mandatory professional reporting requirements, in Australia.

The audit opinion expressed in this report has been formed on the above basis.

Audit Opinion

In our opinion, the financial report of the Society is properly drawn up so as to present fairly the Society's financial position as at 30 June 2001 and the results of its operations and its cash flows for the year ended on that date in accordance with the basis of accounting described in Note 1 to the financial statements.

KPMG

Andrea Waters
Partner
Melbourne
23 October, 2001

A Waters

Arts Access acknowledges with sincere thanks the artists, support workers, program and project partners and funding bodies whose commitment and support have contributed to the achievement of such great outcomes in 2000-2001.

Funding Partners:

Department Of Human Services
Australia Council for the Arts
Arts Victoria
Breastscreen Victoria
Vic Health
Centenary of Federation
Telematics Trust

Project Partners:

Victorian Aboriginal Health Service
Break Out Dance
Deaf Signing Choir
Dramability
Just Us
Splash Arts Studio
Weave Movement Theatre
Melbourne Symphony Orchestra
Handspan Visual Theatre
DADAA

Supporters:

RUCC
KPMG

THANKS

Artists, Support Workers and Workshop leaders:

John Acaro, Catherine Acin, Dominique Azoulay, Julie Bamblett, Kim Baston, Emma Barrance, Larni Bishop, Marc Brew, Dee Buman, Melissa Delaney, Annabelle Dickens, Karina Doughty, Rick Doyer, Prudence Flint, Charles Robinson, Caroline Spiers, Kate Sulan, Claire Teisen, Shannon Foster, Katrine Gabb, Trina Gaskill, Lynn Gordon, Eve Glenn, Frances Guerin, Nilgun Guven, Ponch Hawkes, David Harley, Keenan Hill, Sharon Hodgson, David Holmes, Gillian Howell, Leanne Lovett, Andrew Tranter, Jane Trengove, Danielle von der Borch, Ev Vynhal, Lindy Macauley, Lyndsay Mason, Eva Marks, Nick Merrylees, Lisa Mitchell, Andrew Moon, Christine Mooney, Eve Newsome, Kelly O'Demsey, Deidre Outhred, Amanda Owen, Kitty Owens, John Pierce, Ian Pidd, Denise Webber, Gali Weiss, Marjory West, Dianne Zacanovsky.

Thanks also to: David Corbet, Jane Haley, Beth Roberts, Ian Shaw, Christine Adams, Verna Fisher, Linda Lucas, Andrew Donovan, Mark Stapleton, Claire Havey, Val Shiell, David Doyle, Neal Price, Jane Boase, Tony Doyle, Nerida Wyatt-Spratt, Back To Back Theatre, Snuff Puppets, Gasworks, Australian National Academy of Music, Melbourne Festival, Regional Arts Victoria, Footscray Community Arts Centre, Multicultural Arts Victoria, Kevin Brennan, Anne Cohen, Lynn Gordon, Café Bites, EASE members, Art Program participants, Colin Cornish, Wain Fimeri, Russell and Ed from RUCC, Fleur Parry, Rose Godde, Ann Tonks, Val Johnson, Sue Hedges, Jodee Mundy, Lyn Briggs and Trish Williams, Maggie Maguire and Associates and our families and friends.

Credits

All photos by Catherine Acin unless otherwise credited.

Page 1: Untitled, by Elene Theologo, from the Royal Avenue Supported Residential Service, Essendon.

Page 2: Easter Holiday Program. Costume Design.

Pages 3, 5, 10, 12, 17 and 18: "Domestica", by Ward Hamilton, Art Day South.

Page 7: Untitled, by Elene Theologo.

Page 9:

1. Artability, Arts Access' entry in the Centenary of Federation Parade, May 6th.

2. Art Day West.

3. Splash Art Studio

4. Art Day West

5. Weave Movement Theatre

6. & 7. Art Day South

Page 10:

1. Just Us

2. Deaf Signing Choir

3. & 4. Inability Possibility

5. Art Day West

6. Just Us

7. & 8. Dramability

9. "The Company You Keep" Oil on Canvas, Prudence Flint.

10. "Untitled" (Bowl commissioned by Marie Antoinette in the 17th Century, to promote the virtues of breastfeeding.) Oil on Canvas. Jane Trengove

11. Painted Emu Eggs, from "Merindah Bibi" (Beautiful Women's Breasts), Victorian Aboriginal Health Service.

Photo Ponch Hawkes.

12. Untitled, handpainted silk, Sharon Hodgson.

13. "Merindah Bibi", Victorian Aboriginal Health Service. Photo Ponch Hawkes

Page 12: Jodee Mundy, Deaf Arts Network, interpreting and performing at the Melbourne Marching Girls Hot August Night II. Photo by Vicki Jones.

Page 13:

1, 2, 5, 8 & 9, Linoprint, Deb Lissek.

3. Untitled, Koula Damiris

4, 6 & 7, Art Day South holiday program

Design + layout by Pandarosa.

+61 3 9429 3290

pandarosa@pacific.net.au





ARTS
VICTORIA



Arts Access
24 Eastern Rd
South Melbourne, VIC, 3205
Telephone (+61 3) 9699 8299
Facsimile (+61 3) 9699 8868
TTY (+61 3) 9699 7636
EASE Bookings (+61 3) 9699 8497
www.artsaccess.com.au
info@artsaccess.com.au

ANNUAL REPORT 2000