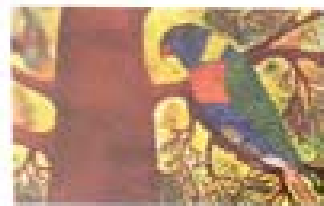
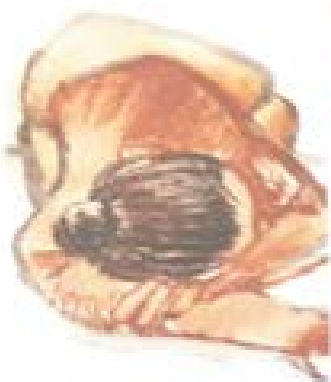
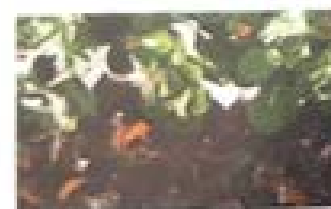




**A**frame exhibition

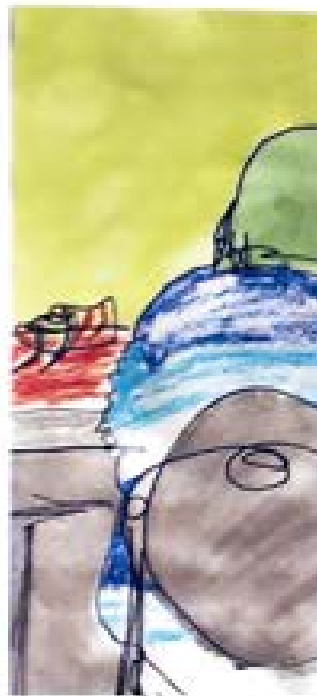
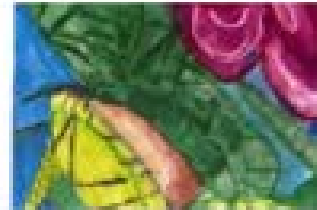
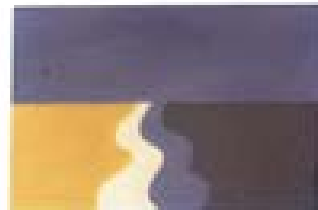
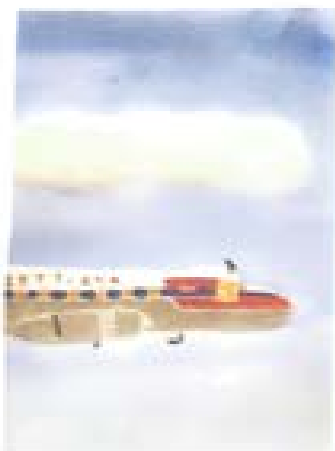


9. Irene Kirkland, *Daily* 2006, A2, acrylic  
 10. Jo Polkinghorne, *Sexual Secrets of Female Passion* 2006, A1, coloured photocopy of collage  
 11. May Swenson, *Girl* 2006, A1, coloured pencil  
 12. David Clarke, *Comet* 2006, A1, watercolour and acrylic on watercolour paper



1. Yvonne Macgibbon, *Recline in Green* 2006, A2, dry pastel on canvas paper  
 2. Paul Watkins, *Too Much Information* 2006, A3, felt pen and coloured pencil  
 3. Christine Larkins, *Perched Moon* 2006, A3, acrylic  
 4. Annea Crabbins, *Cosby* 2006, A2, mixed media  
 5. Claire Gilbert, *Rainbow Lunatics* 2006, A2, oil pastel and acrylic  
 6. Angela Hobart, *I'm Looking for You* 2006, A2, dry pastel on canvas paper  
 7. Jane Borda, *Inspiration and Reflection* 2006, A4, photographic print  
 8. Jane Borda, *Love* 2006, A4, digitally scanned, re-mastered and manipulated from original acrylic painting

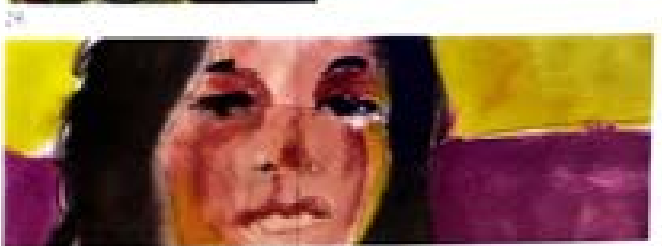




13. Jeremy Smith, *Celebrating Creativity* 2006, A4, photographic print.
14. David Smith, *Blue Fortune* 2006, A2, oil pastel.
15. Jeff Tarr, *Duck and Terry Cabin* 2006, A4, watercolour.
16. Louise Spencer, *Coloured* 2006, A2, acrylic.
17. Penny Webb, *Peace and Tranquility* 2006, A2, acrylic on 60 sketch paper.
18. David Smith, *Forest Sunset, Adelaide* 2006, A3, digital photography.
19. Lene Harris, *Christmas Tree* 2006, A4, pen and coloured pencil.
20. Mark Houn, *This is My Map* 2006, A2, collage.
21. David Webb, *Footnote* 2006, A4, photographic print.
22. John Burkhardt, *Railway Hotel (1850)* 2006, A4, photographic print.
23. Sam Day, *Oranges* 2006, A4, acrylic.
24. Judith Jones, *Spring* 2006, A3, mixed media.
25. Tim Ferguson, *Trisha - A Self-Portrait* 2006, A2, mixed media.
26. Anna May, *Adelaide* 2006, A2, oil pastel.
27. Emma Archer, *Big* 2006, A3, oil pastel and acrylic.
28. David Tarr, *David* 2006, A2, acrylic.
29. Lisa Hamilton, *Free Froggy* 2006, A3, acrylic.
30. David Smith, *Portrait of a young girl* 2006, A4, background pen and watercolour.



31. Prue Pickover, *Whose Shoe* 2006, A2, mixed media.
32. Alexandra Hill, *Somewhere over a rainbow* 2006, A3, coloured pencil.
33. John Carlotti, *Crusader* (from the series *Under Post-Modern Skies*) 2006, double-exposure photographic print.



Arts Access SA

**A-Frame Exhibition and Auction:**

Adelaide Festival Centre Foyer starts

7pm, ends Sunday 3 December 2006

**Artwork viewing:** Exhibition on

show from noon Fri 1 Dec to 1

[www.artsaccesssa.org.au](http://www.artsaccesssa.org.au)

**Arts Access SA**

121 Halifax St Adelaide South Australia

Telephone: 08 8224 0799

Fax: 08 8224 0799

Email: [info@artsaccess-sa.org.au](mailto:info@artsaccess-sa.org.au)

**Payment and collection of works purchased**

-Successful bidders are to pay for all their items in full at the Arts Access SA registration table on the day.

-Payment methods include Cash, Visa, MasterCard or Cheque (with identification)

-The A-Frame Exhibition will remain on display in the Adelaide Festival Centre Foyer from 1-17 December 2006 inclusive and no work may be removed until the exhibition close.

-Items may be collected from the Arts Access SA Offices from Monday 18<sup>th</sup> December between 9am-5pm (Note Christmas closure Fri 22 Dec - Tues 2 Jan incl).

-Items will be packaged and transported within the Adelaide Metro area by Arts Access SA for a fee of \$55 incl GST.

-Items for any other destination will incur an additional fee for transport at cost.

**Charity Status**

Arts Access SA Incorporated is endorsed as a deductible gift recipient under Subsection 50-8A of the Income Tax Assessment Act 1997. Gifts of \$2 or more are tax deductible.

As a charity art auction some opportunities may be available to buyers and we would encourage you to read the article from the Philanthropy Australia website.

[www.philanthropy.org.au/affinity/aag/buyersartextract.htm](http://www.philanthropy.org.au/affinity/aag/buyersartextract.htm)

**Copyright**

Arts Access SA supports the work of artists and would encourage any buyer to be familiar with issues relating to Copyright and Visual Arts. The following infosheet is available: [www.copyright.org.au/pdf/acc/infosheets\\_pdf/G033.pdf](http://www.copyright.org.au/pdf/acc/infosheets_pdf/G033.pdf)

**General Terms and Conditions of Sale**

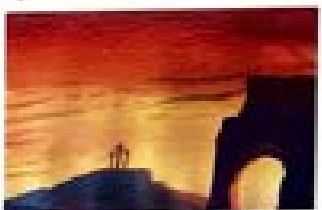
Arts Access SA Incorporated advocates for access and participation in South Australia's arts and cultural life by all people with disabilities. This exhibition has been developed by Arts Access SA in collaboration with the artists whose works are presented. All the proceeds from this auction will be shared equally (50:50) between the individual artist and Arts Access SA for each piece sold. All artworks included in the auction are for sale. A reserve price of \$100 (one hundred dollars) has been set as a value for each individual artwork.

**Going Going Gone**

-The auction will be conducted by Richard Thwaites of LJ Hooker/Kensington, a licensed Auctioneer. The auctioneer will conduct the auction and following his final call the item will be sold to the highest bidder.

-Bidders are required to be registered prior to the commencement of the Auction. Each bidder will receive a numbered paddle which will need to be shown clearly to the auctioneer.

-Advance bids will be received via email or fax directed to the Arts Access SA offices prior to 12noon Sunday 3 December (email: [info@artsaccess-sa.org.au](mailto:info@artsaccess-sa.org.au) or fax: 08-82240709)



- 34. Lauren Thompson, *Bonded Ref* 2006, A2, mixed media.
- 35. Arthur Dean, *Blush* 2006, digital photography, computer manipulation.
- 36. Evangelia Karageorgos, *Canna* 2006, A3, photographic print.
- 37. Roy Fetzke, *Old boat with geraniums* 2006, A4, watercolour.
- 38. Jean Morosan, *Moonlight Coburg Peninsula, N.Z.* 2006, A3, acrylic.
- 39. Charlie Taplin, *Leaf* 2006, A3, oil pastel and acrylic.
- 40. Janine Rosen, *Goodbye Beach* 2006, A4, acrylic.
- 41. Dennis Hawthorne, *Boat at Bay* 2006, A4, photographic print.
- 42. Stephen Galligan, *Protest* 2006, A4, footprint.
- 43. Julie Lanning, *Volcano* 2006, A3, oil on canvas paper.
- 44. Grafe Dedrich, *Jesus Christ was dead but behold He is alive forever* 2006, A3, watercolour on watercolour paper.
- 45. Angela Reichelt, *Lazy Daisies* 2006, A4, acrylic.
- 46. Bryan Tinchy, *Spastic Apple* 2006, A3, mixed media.
- 47. Kay Grubich, *504 Webbers* 2006, A3, machine-photography, inkjet print.
- 48. Sharon Bushell, *David in the lighthouse* 2006, A4, photographic print.
- 49. Ina Alander, *Poppy Love* 2006, A2, oil on acrylic ground.
- 50. Rose O'Malley, *Always time for true love* 2006, A3, acrylic.

## **A-Frame Exhibition marks Arts Access SA's renewed commitment to presenting and supporting visual arts created by South Australian people with disabilities.**

Arts Access SA has a history of supporting individuals with disability to produce artworks. In 1994, when David and Helen, two young adults, expressed interest in Arts in Action in 1994, the genesis was set for a series of events at the Adelaide Festival Centre's Adelaide Theatre Through the years, this an exhibition of unknown quantity, a project in development with Myrthynne Carlow and the boys was renamed from Arts in Action to South Coast. At the same time artists with a disability were being placed in the South Coast. In 1994, when David and Helen were working to establish links between the arts and the needs of people with a disability, and avoided the term 'Arts in Action'.

It was the same year that a strong commitment for the arts and disability in South Australia has been the recognition of performing arts with the emergence of such wonderful companies including Redfern Dance Theatre, No Strings Attached and the Turali Theatre. Consequently, Arts Access SA has reached through consultation with South Australian visual artists the real need to make something more and to provide some deserved support. Arts Access SA, in its other high beam social program promoting the International Day of People with a Disability, has chosen to commit to nurturing and presenting visual arts created by amateur to professional artists. A frame exhibition has been made possible through collaboration and partnership with a range of organisations that are, like Arts Access SA, committed to the belief that artists with disabilities have the right of access to freely express themselves through the visual arts, and the right to an opportunity to have that work seen in a mainstream public venue.

Arts Access SA's capacity to develop this exhibition was made possible with the generous support of our funding agencies the SA Government through Arts SA and the Department for Families and Communities and the Australian Government through the Australia Council. The exhibition was made possible through the partnership support of the Adelaide Festival Centre and their Visual Arts Program and the University of South Australia's S.A. School of Art. We seek to create an increased awareness of the significant contribution visual artists with disabilities can and will make to the State's cultural and social footprint and these institutions continue to reinforce that vision. What you will see is a representation of a large number of artworks which were submitted for selection. The A-Frame Exhibition is the presentation of works on paper that fit the basic format of paper being – A4, A3 or A2. We chose the format for accessibility and cost, giving artists an open brief to present work in any media on paper from screen prints to watercolour, collage, computer generated and photographic art.

An exhibition of this kind is only possible through personal commitment. I would like to acknowledge a few of the people involved and their contribution. The work exhibited has been selected by three of South Australia's arts and disability leaders, the panel included Cathy Hens, artist, Neil Liffenaga, Director of the Disability Information and Resource Centre and Paul Hoban, artist and former Head of Painting Studio, S.A.S.A. Selection is an arduous task and I would like to thank the panel for their capacity to give a considered view of what South Australia's artists with disabilities create. The resultant exhibition in the Adelaide Festival foyer has been named by Home Art Industries (but thanks to Garry Chapman) to provide a community of style for the exhibition. It has been designed to promote the artists through quality presentation in a mainstream venue and importantly able to generate sales for their work.

The importance of this exhibition should not be overlooked for both the artists and Arts Access SA. One goal available for artists to gain recognition of their work and proof of an exhibition within a mainstream context is the production of a quality catalogue. Our thanks to the University of SA, Honours Visual Communication Consultant, and particularly Visual Communication Course Co-ordinator Fred Littlejohn and designer, Honours student Beth Spence. One of the unique features of this exhibition is that the works will all go under the hammer at an auction as part of the launch on the International Day for People with a Disability. Richard Theatres, franchisee of LithcookeKensington will assist us on the day as the Auctioneer and we thank him for his generous support.

An exhibition of this kind is more than calling up a few people and hanging their pictures on a wall. Jeanette Ternes, as a student on Arts Industry Internship from the University of SA School of Art has contributed magnificently to this project. She has demonstrated her creativity, her capacity to work in a team and her commitment to the development of visual arts for persons with a disability. Whether it's through the artworks of Australia's leading artists who have identified with a disability such as the late Brett Whiteley, Margaret Olley or South Australia's acclaimed Richard Maunula, or the many unknown artists producing work very often unacknowledged, visual artists with disabilities make a rich and compelling contribution to Australia's cultural life. The works presented here in A-Frame represent a renewed vigour for Arts Access SA and S.A.'s artists with disability. Please join with us in witnessing the exhibition and of course please make a bid.

**Peter Sneglas**  
Executive Director  
Arts Access SA