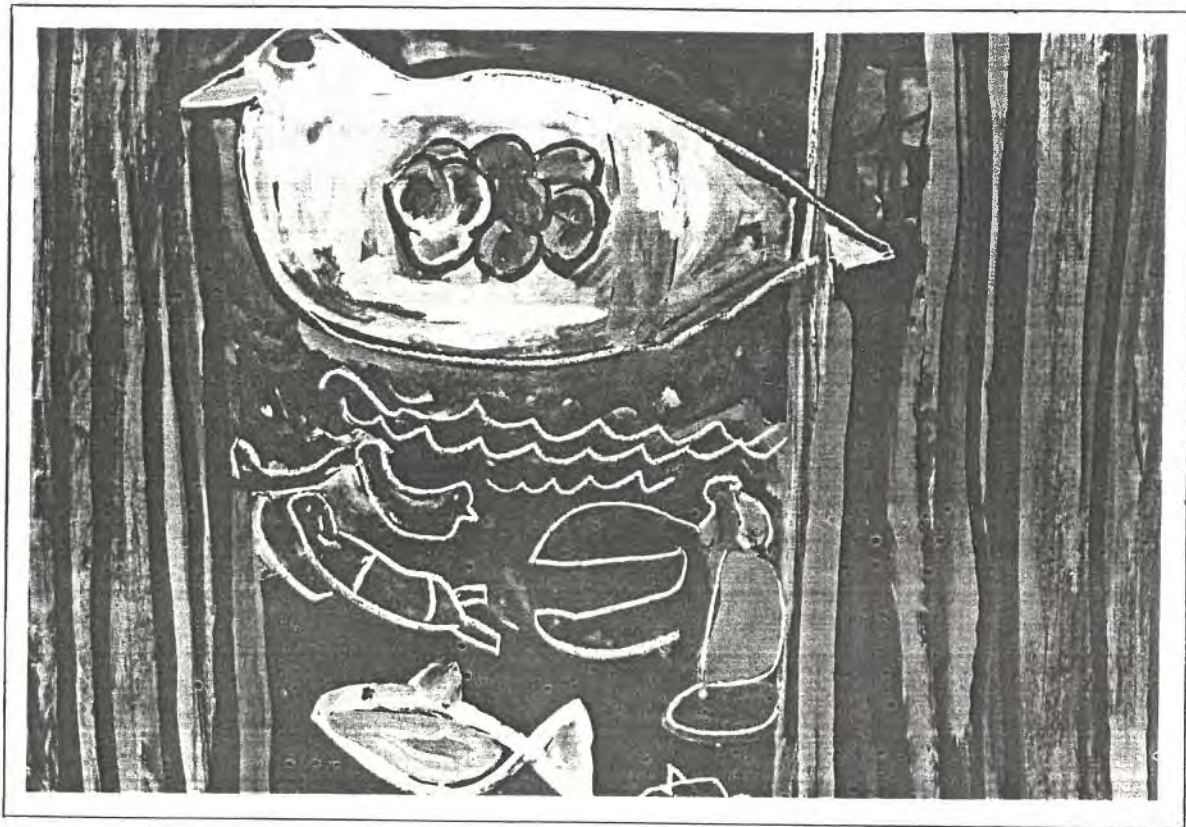


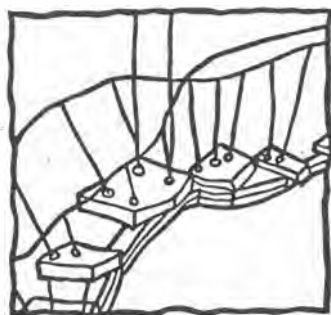
# Arts Project Australia Inc.



## Annual Report 1991

PER

SF  
361  
A1



## **Arts Project Australia Inc.**

# **Annual Report 1991**

<b>Contents:</b>	<b>Page</b>
Aims and Objectives	2
President's Report	3
Program Director's Report	4
1991 Exhibition Report	6
Scenes from the Studio Workshop	8
Financial Reports	9
Acknowledgements and Thanks	19

## **Aims and Objectives:**

Arts Project Australia began in 1974 as an arts based advocacy group for people with intellectual disabilities. A major reason for the formation of "the Art Project" (as it was then known) was the insight on the part of its members that many people who have an intellectual disability displayed aptitude and talent in the visual arts, and that the flexible conventions of these arts forms could provide access to a variety of means of expression and communication, even when more common forms, particularly linguistic were difficult for them to utilise.

### **Broadly, the aims of the Association are:**

- To provide the means by which people with an intellectual disability can participate fully in the visual arts;
- To promote the work of people with an intellectual disability as integral to the broad spectrum of contemporary art practice;
- To facilitate participation by people with an intellectual disability in appropriate mainstream programs and courses, and to encourage meaningful artistic exchange between disabled and non-disabled artists;
- To broaden understanding and awareness of art by people with intellectual disabilities among artists and the general public;
- To advocate art as a valid vocational or recreational option
- To support and provide high quality community based education and training programs in the visual arts;

**In addition to the above points, the Studio Workshop Program specifically aims to provide educational experiences which will:**

- Develop the artistic skills and awareness of people with an intellectual disability so that they may more fully utilise art as vocational or recreational option;
- Focus on personal development particularly on the areas of self confidence and self-esteem which will enhance the individual's ability to function in other aspects of their lives;
- Encourage the development of personal symbols and expressions so that art may be used as an alternative means of communication.



## President's Report

In presenting my report for 1991, I am happy to be able to say that, despite the anxieties and restrictions felt due to the continuing recession by an organisation as dependent on public funding as Arts Project Australia, we have been able to sustain our programmes and we are grateful for the support we have received from both the public and private sectors. It is an acknowledgement by them of the value of the work that is done.

There is a growing recognition that the experience accumulated over the eighteen years of our existence has made Arts Project Australia a valuable resource centre. The assistance given to people with an intellectual disability in the field of visual arts is increasingly seen to offer valid training in acquiring new skills. The project also forms a focal point in the community where genuine integration between those who are and those who are not disabled can share their common interest in the visual arts and the facilities provided for their practice.

We have come to recognise that this is not something that can be quickly established. It is a complex process that requires sensitivity and understanding of the needs and reactions of all those involved, not simply a method that can be imposed according to a theory. We have been privileged to receive this kind of understanding for those of our students who have been accepted into the art courses of painting and drawing at P.I.T. Our staff of artworkers has also benefited enormously from this connection, as is the case with the Australian Print Workshop where several students have the opportunity to develop skills in printmaking. We were deeply distressed to learn of the death of Mr. Neil Leveson, Director of the Australian Print Workshop, to whom we owe so much for his understanding and help.

The provision of regular long term assistance by experienced artists sensitive to the needs of the students and their difficulties and to their creative originality, the use of high quality materials of great variety, the calm and concentrated environment that the artworkers seek to maintain are recognised as basic necessities in the workshop. This is what undoubtedly produces the remarkable development in the work, the painterly qualities that are the mark of the artist. It also, not surprisingly, increases the independence, the growth in confidence and the sense of self worth that so often accompanies the process.

We look forward to the opportunity being provided to us by the National Gallery of Victoria in August 1992 to hold an exhibition in the Access Gallery to bring some of the works before a wider public and provide opportunities for discussion.

I wish to thank Community Services Victoria, especially Gill Pierce and Helen Cocks, and Northcote City Council and in particular Carol Mavric the Community Arts Officer, for their part in helping us to receive the funding for the rental of the adjacent premises. This presents a wonderful opportunity to double our space, relieving the already over-crowded space in the workshop and providing a larger shopfront gallery.

During the year I was invited to become a member of the Arts and Creativity Committee chaired by Luc Boulange of CREAHM Belgium, of the International League of Societies for Mental Handicap located in Brussels. This year a conference is being held in Vancouver and I have asked Cheryl Daye to represent me as I am unable to attend. We hope this will prove to be a valuable connection.

I wish to acknowledge the encouragement and financial support we have received through Mr. Michael Liffman from the Sidney Myer Fund. The establishment of a permanent collection of the early work that was the basis of the original Arts Project was celebrated with an exhibition opened by Mr. Michael Liffman. This collection, known as The Sidney Myer Fund Permanent Collection, will be used as a resource for study and loan purposes.

We welcomed Sally Shrimpton and Michael Butson to the Management Committee last year, and I thank all Committee members for the time and effort they give to Arts Project Australia. My very grateful thanks go to Cheryl Daye, the Director, who carries so much of the burden of seeking the on-going funding which is the basis of Arts Project Australia's existence, it is a very time consuming task added to the general management of the organisation and the very able representation of it she makes in the community. It is a very high priority to provide her with a full-time assistant when funds become available.

I both thank and congratulate the artworkers and our part-time administrative assistant for their continued and dedicated work without which we would not exist.

Myra Hilgendorf , O.A.M.  
President.

## PROGRAM DIRECTOR'S REPORT

The past year has been a time of considerable consolidation and growth for Arts Project Australia, with the continuing success of our established programs, as well as some exciting new developments.

Arts Project Australia is committed to achieving social and attitudinal change which will diminish existing barriers and enable people with intellectual disabilities to participate fully in the visual arts.

This change does not occur through one-off events, overnight or even over one year - it is a lengthy, cumulative process which requires sensitivity to the individual needs of people with an intellectual disability, and a sustained endeavour towards educating and raising the awareness of the general public as well as the art community.

Our adherence to standards of excellence is illustrated by the degree of development shown by participants, and the quality of work which they produce. Arts Project Australia also believes it is essential to maintain a close working relationship with the individuals for whom our service provides support; to be constantly aware of changing needs related to the artistic development of each person, and to develop programs in response to these.

The long term commitment which Arts Project Australia is able to make to participants in its program is an important factor in developing their sense of themselves as artists whose contribution is respected and valued.

The demand for places in the Arts Project Australia studio-workshop program has continued to grow to the point where we currently provide for approx. 170 clients per week, and this has meant an increasing demand on staff and resources. Towards the end of 1990 it became imperative that a larger space be made available for the art sessions as classes were overcrowded and we were unable to offer participants a full range of activities.

We were therefore delighted when, with the assistance of CSV NE-Region and the Northcote Council, we were able to take over the lease on the adjoining shopfront property. This space will enable us to increase the range of activities currently being offered to our regular participants, as well as increase our interaction with the local art community.

We are looking forward to exploring many of the possibilities which this opportunity has created, particularly in the development of further working partnerships between Arts Project Australia and local government, as well as other organisations and individual artists.

Our integrated evening life drawing classes have continued again this year, and we were grateful to the Northcote Council for supporting the development of an evening painting course which was run as a pilot program for members local community and taught by artist Roger Moloney. We are hoping to run more evening and holiday programs of this type, and the new studio space will facilitate our ability to do this.

A number of studio-workshop participants again had the opportunity to develop their skills in etching and lithography at the Australian Print Workshop in Fitzroy, where they have worked under the sensitive and expert guidance of Ms. Marion Crawford. We were all saddened to hear of the death of Mr. Neil Leveson, Director and Founder of the Australian Print Workshop, whose generosity and vision played such a vital part in enabling our clients to have access to such superb professional facilities.

Earlier in the year we were approached by the Department of Sport and Recreation who wished to initiate a pilot recreation program in art for prisoners in Pentridge's K6 Division. This program has proven highly successful in terms of the interest shown by the prisoners, and artworker Mark Chapman will continue the program into 1992. I would like to thank Kerry Donaldson from the Office of Corrections and Mark Chapman for the work which they have put into making this such a worthwhile program.

Our involvement with the School of Art and Design at Phillip Institute of Technology has continued on a sessional basis, with three new people attending painting and drawing classes. I would like to thank Mr. Jim Taylor, Ms. Diane Kilderry, Mr. Joseph De Lutis and Ms. Lyn Quintal for their continuing support for, and involvement in, this innovative and exciting program.

We were pleased that Mr. Michael Liffman, Executive Officer of the Sidney Myer Fund, was able to attend the launch of the Sidney Myer Fund Permanent Collection at our Northcote gallery. This collection consists of some 400 works which formed the basis of many of Arts Project's early exhibitions in the mid 1970's - early 1980's.

Many of these works were done using inferior art materials and have become fragile with age, but thanks to support from the Sidney Myer Fund, they are now properly catalogued and stored in a way which will minimise their future deterioration, and provide a valuable historical resource.

I would also like to thank the Trustees of the Sidney Myer fund for providing us with financial assistance to produce a new range of greeting cards. These cards have been well received, and are an excellent means of promoting a positive image of people with intellectual disabilities to the broader community, and we are currently pursuing wider distribution opportunities both locally and interstate.

Arts Project Australia has been recognised as an innovative and model service. Interest in our activities has grown and we are now receiving many requests for consultation, staff training and student placements. Further recognition of our approach came through our inclusion in a CSV/CIDA publication "Finding Other Ways" - a booklet which describes a range of programs which highlight positive approaches to service delivery for people with intellectual disabilities.

This year also saw the beginnings of a national network of Arts and Disability Agencies (D.A.D.A.A.). Whilst travelling overseas on a Churchill Fellowship in 1990, my experiences confirmed a belief in the need for establishing such a network, and I was pleased to have the opportunity to contribute to the process as a Victorian delegate, along with a representative from Arts Access.

It is hoped that the national network will not only provide a means for sharing information, but will actively pursue the development of greater opportunities for people with disabilities to participate in the arts.

We are indeed fortunate to have such a committed and capable team of artworkers and in conclusion I would like to express our gratitude for the work they have put in during the year. I would also like to thank the Management Committee, and in particular the President, Myra Hilgendorf for her enthusiasm and support.

**Cheryl Daye**  
**Program Director**





## 1991 EXHIBITIONS REPORT

This year was particularly strong for our exhibitions program, both in terms of the shows held at our own Arts Project Gallery, and in outside venues.

The first exhibition of the year was held at Linden Gallery in St. Kilda and featured five artists from Arts Project. One notable aspect of this show was that it shared the gallery with two other independent artists, and provided a perfect example of integration with the broader arts community. At the opening we were very happy to meet Mr. James Mollison, who made a point of inviting Arts Project to exhibit at the soon to be opened Access Gallery at the National Gallery of Victoria. We are currently working towards this exhibition, which is due to open at the National Gallery of Victoria in August, 1992.

Shortly after the Linden exhibition, another show was staged at 200 Gertrude Street, Fitzroy. This exhibition was curated by Ms. Rose Lang, Director of 200 Gertrude Street, and Mr. Chris Dyson, an artist and art lecturer. We received a great deal of positive feedback from this exhibition, and we were pleased to have the opportunity for the work to be shown in such a well known gallery, which has a reputation for supporting innovative contemporary work.

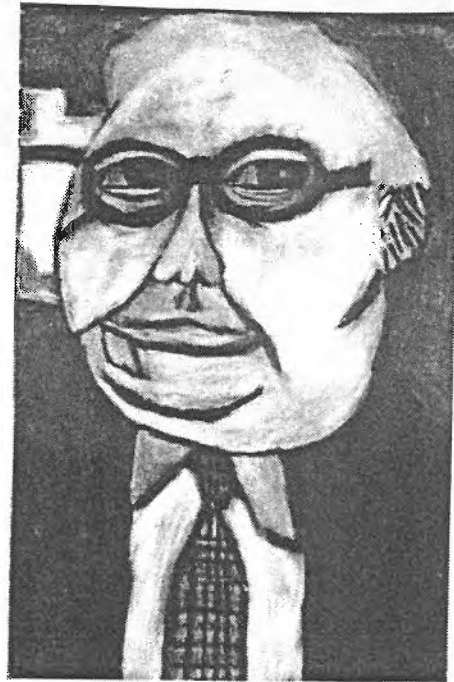
Subsequent exhibitions were held at the Victorian Ministry for the Arts and at the Arts Access Studio as part of the Melbourne Festival. Another highly successful Christmas Salon Show of smaller works was held, and this is well on the way to becoming an annual event.

Our international links were also strengthened by our participation in the 1991 "Figeac Festival" in France, when five artists from Arts Project Australia had their work selected for an exhibition which was held in the Figeac Centre Culturel.

This year also saw the achievement of greater integration opportunities with the local art community, by staging three shows by artists from outside the studio-workshop program in the Arts Project Gallery in Northcote. The first two of these were of work by Irene Wellm and Lenka Holt, whilst the third was a group show of work by the artswomen at Arts Project.

We are keen to further develop this form of interaction and the extension of the gallery into our new premises, along with the links we are developing with the local art community through the Northcote Council will no doubt facilitate this.

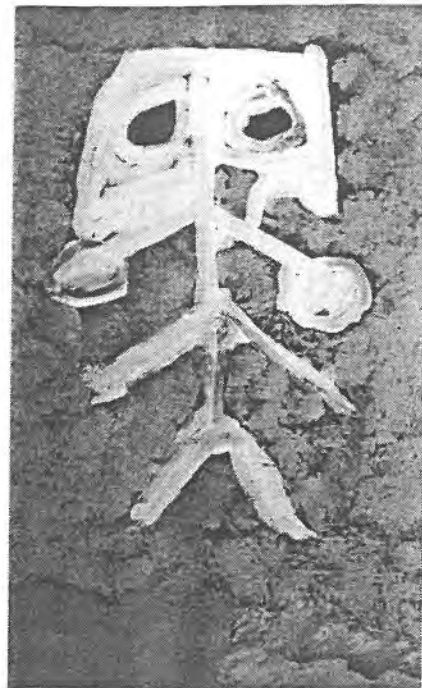
Thank you to all those who contributed to these exhibitions, and congratulations to the artists whose work has been so well received.



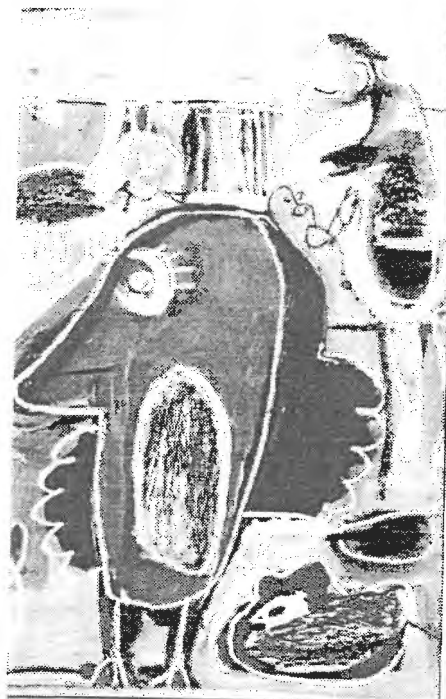
Valerio Ciccone, "Sir Peter Abeles"  
Pastel on paper, 1991



*Above:* **Julian Martin**  
(Macedonian Mask)



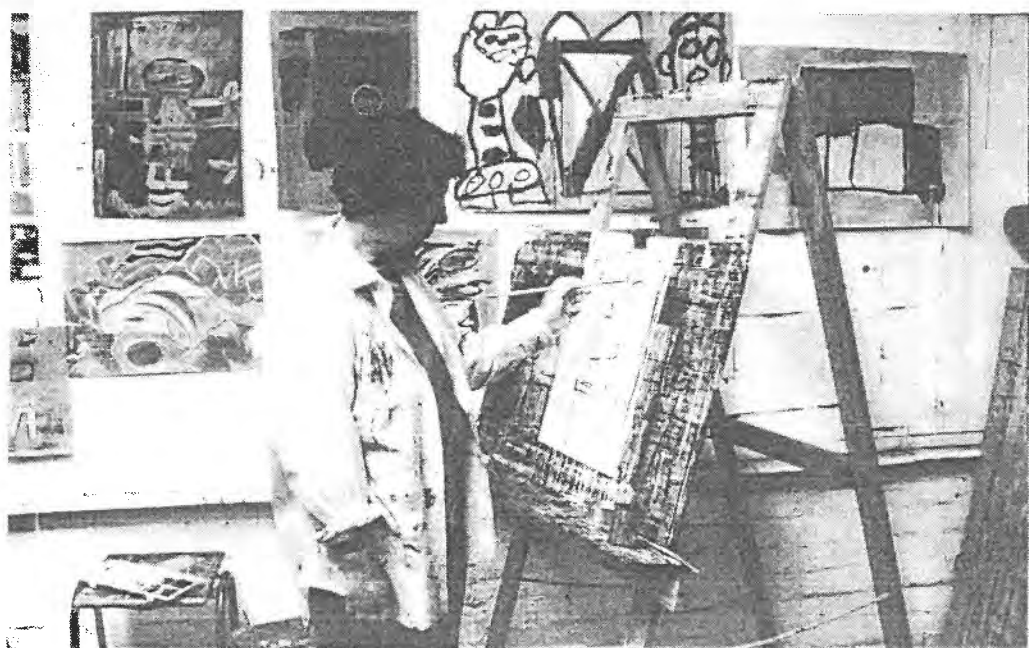
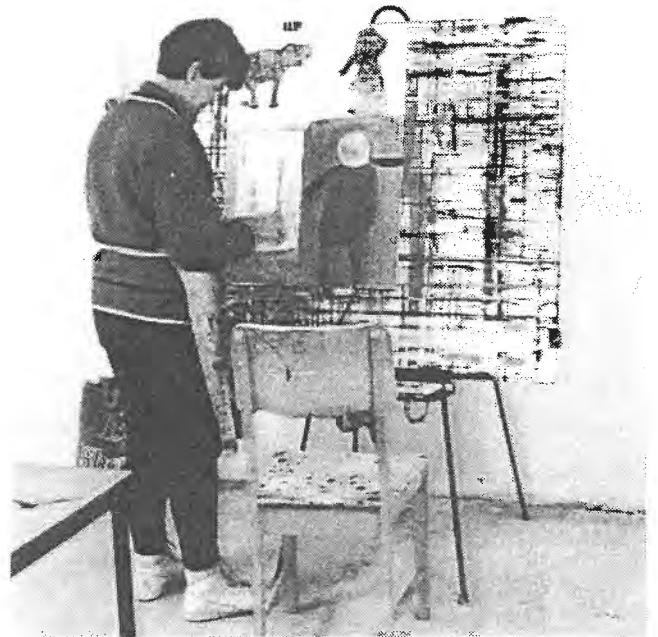
*Above Right:* **Stelio Costa**  
(Figure)



*Right:* **Dorothy Berry**  
(Bird & Man)



## Scenes from the Studio Workshop



# **Financial Reports**

## **Financial Reports**

## **Page:**

Statement of Sources and Application of Funds	10
---	----

### **Summary of Income and Expenditure:**

Department of Health, Housing and Community Services	11
Department of Sport & Recreation - Pentridge Program	11
Community Services Victoria	12
Department of Sport & Recreation	13
Australia Council - C.C.D.U.	13
City Of Northcote	14
Sidney Myer Fund & Myer Foundation	14

Balance Sheet	15
---------------	----

Profit and Loss Statement	16
---------------------------	----

Notes to and Forming part of the Financial Statements	18
---	----

# ARTS PROJECT AUSTRALIA INC.

## STATEMENT OF SOURCES AND APPLICATION OF FUNDS

### FOR THE YEAR ENDED 31ST JANUARY 1992

#### SOURCES OF FUNDS:

Funds from Operations -		
Operating Surplus	6869	
Plus: Depreciation	3791	
- Accrued Holiday Pay	1256	
- Creditors (Office Exps)	-158	
- Creditors (Other)	1501	
	<hr/>	
<b>NET OPERATING DEFICIT</b>		<b>13259</b>

Plus Reduction in Current Assets:		
- Investment A/C S/Wshop #9470	13953	
- Vic. Govt Security Bonds	1172	
	<hr/>	
		<b>15125</b>

Plus Increase in Liabilities:		
- Northcote Grant	4000	
- DHHCS Equipment Grant	6484	
- Bank O/draft S/Wshop #9470	619	
- Dept. of Community Services	268	
- Community Services Victoria	3593	
- Vic. Ministry for the Arts	7000	
	<hr/>	
		<b>21964</b>

<b>TOTAL FUNDS FROM SOURCES</b>		<b>50348</b>
---------------------------------	--	--------------

=====

#### APPLICATION OF FUNDS

##### Increase in Assets

Current Assets: Petty Cash W/shop	10	
- Accounts Payable	232	
- Investment a/c No. 2 #9567	38718	
	<hr/>	
		<b>38960</b>

Plus: Non-current Assets		
- Workshop Equipment	2651	
	<hr/>	
		<b>2651</b>

Plus: Decrease in Current Liabilities		
- Bank O/draft No. 2 #9567	1737	
- Australia Council	7000	
	<hr/>	
		<b>8737</b>

<b>TOTAL FUNDS APPLIED</b>		<b>50348</b>
----------------------------	--	--------------

=====

**ARTS PROJECT AUSTRALIA INC.  
DEPARTMENT OF HEALTH, HOUSING  
AND COMMUNITY SERVICES  
SUMMARY OF INCOME AND EXPENDITURE  
FOR THE YEAR ENDED 31ST JANUARY, 1992**

<b>GRANTS RECEIVED</b>	<b>SALARIES</b>	<b>RENT</b>	<b>EQUIP.</b>	<b>TOTAL</b>
January 1992 (Accrued from Dec. '90)	7007	1637	0	8644
March 1991	10539	2463	2105	15107
September 1991	10912	2551	0	13463
October 1991	10762	2514	0	13276
December 1991 (for January 1992)	3612	844	0	4456
<b>TOTAL</b>	<b>42832</b>	<b>10009</b>	<b>2105</b>	<b>54946</b>
<b>EXPENDITURE</b>				
Salaries - Artswokers	40604	10831	2105	53540
- Administration	11855	0	0	11855
<b>TOTAL</b>	<b>52459</b>	<b>10831</b>	<b>2105</b>	<b>65395</b>
<b>SURPLUS / DEFICIT</b>	<b>(\$9,627)</b>	<b>(\$822)</b>	<b>\$0</b>	<b>(\$10,449)</b>
	=====	=====	=====	=====

**DEPARTMENT OF SPORT AND RECREATION  
PENTRIDGE PROJECT  
SUMMARY OF INCOME AND EXPENDITURE  
FOR THE YEAR ENDED 31ST JANUARY 1992**

**GRANT INCOME**

Department of Sport and Recreation 5000

less **EXPENDITURE**

Wages 2977  
Materials 430  
MV Reimbursement 198

**TOTAL** 3605

**SURPLUS** \$1,395

=====

**ARTS PROJECT AUSTRALIA INC.  
COMMUNITY SERVICES VICTORIA  
SUMMARY OF INCOME AND EXPENDITURE  
FOR THE YEAR ENDED 31ST JANUARY 1992**

**INCOME**

February 1991 (Accrued Jan. 1991)	7500
April 1991	11250
June 1991	5000
August 1991	13500
September 1991	5700
October 1991	14080
January 1992	5546
	-----
<b>TOTAL</b>	<b>62576</b>

**less EXPENDITURE**

Salaries - Administration	50374
Wages - Artswomen	1416
Workcare	1392
Materials	1192
Superannuation	342
Model fees	1350
Rates	2392
Electricity	2178
Building maintenance	631
Telephone	982
Insurance	1320
Office expenses	1045
	-----
<b>TOTAL</b>	<b>64614</b>
	-----
<b>DEFICIT</b>	<b>(\$2,038)</b>
	<b>=====</b>



**ARTS PROJECT AUSTRALIA INC.  
DEPARTMENT OF SPORT AND RECREATION  
AUSTRALIA COUNCIL - C.C.D.U.  
SUMMARY OF INCOME AND EXPENDITURE  
FOR THE YEAR ENDED 31ST JANUARY 1992**

**GRANT INCOME**

Department of Sport and Recreation		
- General Grant	10000	
Australia Council C.C.D.U.		
- General Grant	7000	
	-----	
<b>TOTAL</b>		<b>17000</b>

**less EXPENDITURE**

Wages	8756	
Exhibition - Framing	377	
Exhibition - Printing	354	
Exhibition - Commission Paid	2719	
Exhibition - Postage / Other	916	
Workshop Equipment & Materials	5715	
Workshop Publicity	506	
Workshop Exps (Cleaning, consumables, other)		1398
Association Expenses	1037	
Audit Fees	1071	
Postage	594	
Stationery	1948	
Bank Charges	371	
	-----	
<b>TOTAL</b>		<b>25762</b>
		-----
<b>DEFICIT</b>		<b>(\$8,762)</b>
		=====

**ARTS PROJECT AUSTRALIA INC.  
CITY OF NORTHCOTE  
SUMMARY OF INCOME AND EXPENDITURE  
FOR THE YEAR ENDED 31ST JANUARY 1992**

**INCOME**

City of Northcote		720
-------------------	--	-----

less:

**EXPENDITURE**

Tutor Fees	568	
Materials	248	
	816	
DEFICIT		(\$96) =====

**MYER FOUNDATION AND THE SIDNEY MYER FUND  
SUMMARY OF INCOME AND EXPENDITURE  
FOR THE YEAR ENDED 31ST JANUARY 1992**

**GRANT INCOME**

1989 Grant carried forward		957
----------------------------	--	-----

less **EXPENDITURE**

Brochure	553	
Postage	43	
Collection Launch	375	
	971	
TOTAL		971
		(\$14) =====
DEFICIT		

**CARD PROJECT - NOVEMBER 1992**

GRANT RECEIVED	1000	
less: Production Costs	813	
	\$187	
SURPLUS		=====

**ARTS PROJECT AUSTRALIA INC.**  
**BALANCE SHEET AS AT 31ST JANUARY 1992**

**MEMBERS' FUNDS**

Opening balance - Members Funds	21618
Profit/loss b/fwd	6869

**CLOSING BALANCE MEMBERS' FUNDS**

\$28,487

Represented by:

**CURRENT ASSETS**

Petty Cash - Workshop	60
Investment A/C S/Wshop #9470	4507
Investment A/C No. 2 #9567	57103
Vict. Govt. Security Bonds	3704
Accounts Payable	232

**TOTAL CURRENT ASSETS**

65607

**NON - CURRENT ASSETS**

Office Equipment (Note 5)	7854
less Accumulated Depreciation	-4189

3665

Studio Workshop Equipment (Note 5)	13791
less Accumulated Depreciation	-6265

7526

**TOTAL NON CURRENT ASSETS**

11191

**TOTAL ASSETS**

76799

**less CURRENT LIABILITIES**

Bank O/draft - S/Wshop A/C 9470	684
Bank O/draft - No. 2 A/C 9567	487
Creditors (Other)	4415
Accrued Holiday Pay	3236
Rent Liability	2000
Grants Received for 1993:	
- Dept. of Health, Housing and Community Services	8913
- Vic. Ministry for the Arts	7000
- Community Services Victoria	11093
- DHHCS Equipment	6484
- City of Northcote	4000

**TOTAL CURRENT LIABILITIES**

48312

**NET ASSETS**

\$28487

**ARTS PROJECT AUSTRALIA INC.  
PROFIT AND LOSS STATEMENT  
FOR THE YEAR ENDED 31ST JANUARY 1992**

**GROSS RECEIPTS**

**Grants:**

- Australia Council C.C.D.U.	7000
- Dept. Health, Housing and Community Services	52842
- DHHCS Equipment	2105
- Myer Foundation	1000
- Community Services Victoria	62577
- Department of Sport and Recreation	15000
- Other Grants	1370

-----  
141894

**Other Income:**

- Gallery Hire	450
- Gifts and Donations	1757
- Interest	2091
- Other Income	821
- Life Drawing Fees	2222
- Sale of Cards	1787
- Sale of Paintings	5886
- Subscriptions Received	520
- Workshop Fees	13713
- Paintings Leased	540

-----  
29787

**TOTAL GROSS INCOME**

-----  
171681

**less COST OF SALES**

Exhibition - Framing	377
Exhibition - Printing	354
Exhibition - Commission Paid	2719
Exhibition - Postage/other	916

**TOTAL COST OF SALES**

-----  
4367

**TOTAL INCOME**

-----  
167314



## PROFIT AND LOSS STATEMENT : CONTINUED

### less EXPENSES

Accounting and Audit Fees	1072	
Association Expenses	1038	
Cards - Production Costs	613	
Cards - Royalties	200	
Depreciation (Note 3)	3791	
Electricity - 116 High Street	2179	
Insurance	1320	
Bank Charges	254	
Holiday Pay / Leave	1256	
Life Drawing Expenses	1350	
City of Northcote Grant Expenses	766	
Office Expenses	1045	
Sidney Myer Fund Permanent Collection	971	
Postage	595	
Stationery	1948	
Rates - City of Northcote	1471	
Rates - MMBW	683	
Rates - Other	239	
Repairs and Maintenance (Note 4)	632	
Rent - 116 High Street	10831	
Superannuation	343	
Telephone	982	
Workcare	1392	
Wages - Pentridge Program	2977	
Wages - Artswokers	50549	
Wages - Administration	51296	
Wages - Other	228	
Wages - Oncosts	10933	
Workshop Materials	7156	
Workshop Materials - Pentridge	430	
Workshop - Cleaning	450	
Workshop - Program Publicity	507	
Workshop - Other Expenses	45	
Workshop - Consumables	903	
	-----	
<b>TOTAL EXPENSES</b>		160445
		-----
<b>NET SURPLUS</b>		<b>\$6,869</b>
		=====
<b>EXTRAORDINARY ITEMS</b>		0
		-----
<b>NET SURPLUS AFTER EXTRAORDINARY ITEMS</b>		<b>\$6,869</b>
		=====

## **Notes to and Forming Part of the Financial Accounts for the Year Ended 31st January, 1992**

### **1) Historical Cost Accounting**

The financial statements have been prepared in accordance with the Historical Cost Convention and therefore do not reflect changes in the purchasing power of money or current valuations of non-monetary assets. The accounting policies are, unless otherwise stated, consistent with these.

### **2) Accrual Accounting**

The accrual method of accounting is used whereby accruals and prepayments are recognised in the financial year to which it relates, and not when it is paid.

### **3) Depreciation**

Depreciation is calculated on a straight line basis, so as to write off the net cost of each fixed asset during its expected useful life.

### **4) Repairs and Maintenance**

Costs related to repairs and maintenance of the organisation's operating facilities are written off as they are incurred.

### **5) Fixed Assets**

Fixed assets have been depreciated on a straight-line basis so as to write off of these values progressively over their estimated useful lives. Additions during the year are depreciated on a pro-rata basis from the date of acquisition.

## **AUDIT STATEMENT TO THE MEMBERS OF ARTS PROJECT AUSTRALIA INC.**

We have audited the accounts as set out and the supporting records of Arts project Australia Inc. In our opinion -

- 1) The accounts are drawn up so as to give a true and fair view of the state of affairs as at 31st January, 1992;
- 2) The assets of Arts Project Australia Inc. exist and the funds have been used in accordance with the purposes and intention of the organisation.

Babbage & Co.  
Public Accountants

J.E. Babbage AASA CPA  
Principal  
(Dated 25th March, 1992)

## **Statement to the Members of Arts Project Australia Inc.**

We hereby certify that the accompanying Accounts comprising an Income and Expenditure statement and the Balance Sheet and Sources and Application of Funds Statement, together with the Notes to the Accounts have been prepared in accordance with Australian accounting standards. In our opinion the Accounts present a true and fair view of the transactions during the year ended 31st January, 1992, and the financial position of the Association at 31st January, 1992.

W.M. Hilgendorf, President

F.M. Hilgendorf, Treasurer



## **Management Committee 1991:**

**President:** Myra Hilgendorf

**Vice President:** Fran van Brummelen

**Secretary:** Sue Sturup

**Treasurer:** Murray Hilgendorf

**Public Officer:** Alan Davis

**Program Director:** Cheryl Daye

**Administrative Assistant:** Linda Bond

**Committee:** Michael Butson  
Wayne Marnell  
Lyn Quintal

Cliff Judge  
Rita Mantell  
Sally Shrimpton

**Artswriters:** Mark Chapman  
Kitty Ginter  
Amanda Laming  
Roger Moloney  
Dora Zable

Luciano Giardina  
Lindy Judge  
Megan McEvoy  
Maxine Ryder

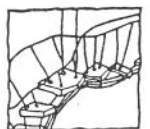
## **Acknowledgements:**

Arts Project Australia Inc. gratefully acknowledges the support of:

Community Services Victoria  
Department of Health, Housing and Community Service  
Department of Sport and Recreation (Victoria)  
Australia Council - C.C.D.U.  
Northcote City Council  
Victorian Ministry for the Arts  
City of St. Kilda  
Sidney Myer Fund  
Espirit  
John Blom - Northcote Lions Club  
Rod Beer - Artshop, Prahran  
Louise Bradley Framing  
Australian Print Workshop  
School of Art & Design, Phillip Institute of Technology  
Bristol Paints  
Arts Access  
Stephen Adams  
Biddy Northe

**Printing and Binding - Janefield Special School Annexe**

*Arts Project Australia Inc. is recognised as a charitable organisation by the Australian Tax. Office. Donations of \$2 and over are tax deductible.*



Arts Project Australia