



SEA me



An exhibition of seascapes and the creatures that inhabit them by Tutti Arts' Port Adelaide based visual artists.

Opening : Saturday 24 February, 5pm - 7pm

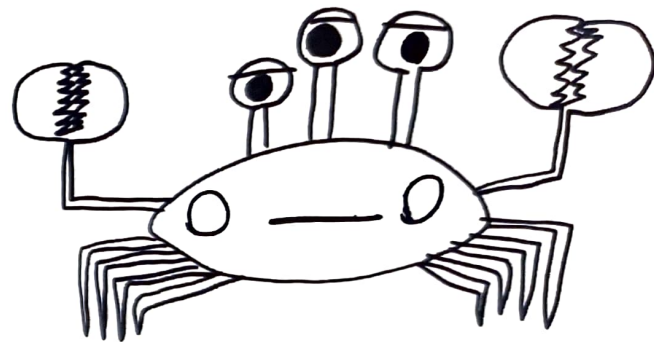
Opening speaker: Local artist Bryan Tingey

Exhibition hours: Mondays and Tuesdays, 1pm - 4pm
19 February - 13 March 2018

At Fontanelle Studio, 175 St Vincent Street, Port Adelaide



Fontanelle Gallery & Studio is
now wheelchair accessible!



Tutti Arts' Port Adelaide studio is supported by Arts
South Australia and the City of Port Adelaide Enfield