

INTERPRETATION

Performance Space 20 - 22 Nov Thu - Sat 8pm Sat 2pm

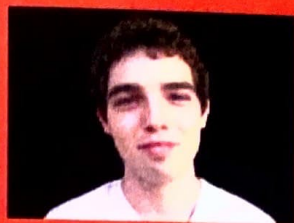
ATGD





KATE NELSON makes a return to ATOD after starring in all of ATOD's productions from 1998 to 2002. Every conceivable challenge was thrown her way over that time, including having to play a man in *The Smiling Prisoner* in 2000. She also excelled in *The Language Of One* at the Newtown Theatre in 1999.

STEPHEN KING is a refugee from television-land, most notably in *Home and Away* playing Edward from 1999 to 2000. He is currently featuring in the film *The Rage In Placid Lake* and recently played Julian in *The Misanthrope* at Belvoir.



AMANDA LYONS leaps into the theatrical saddle after many years as a professional interpreter and noted sign-singing performer. She actually plays the older sister who is an Auslan interpreter. A case of art imitating life?

The Australian Theatre of the Deaf presents **INTERPRETATION**. In a deaf family whose parents have died in a car accident, 2 sisters struggle to define their own relationship. But it takes an outsider to ultimately interpret the parents' legacy. This is a psychological twister in two languages, English and Auslan.

Bookings

02 9698 7235 (voice)

02 9310 1205 (tty)

boxoffice@performancespace.com.au

Tickets

\$22 Full, \$18 Members, \$16 Concession

Performances

Thursday, 20th November,

8pm

Friday, 21st November,

8pm

Saturday, 22nd November,

2pm & 8pm

Venue

Performance Space, 199 Cleveland St, Redfern



Australian Theatre of the Deaf

4/245 Chalmers Street, Redfern NSW 2016

Phone: 02 9310 1255 TTY: 02 9310 1205 Fax: 02 9318 2835

atod@mpx.com.au www.ozdeaftheatre.com

2003

