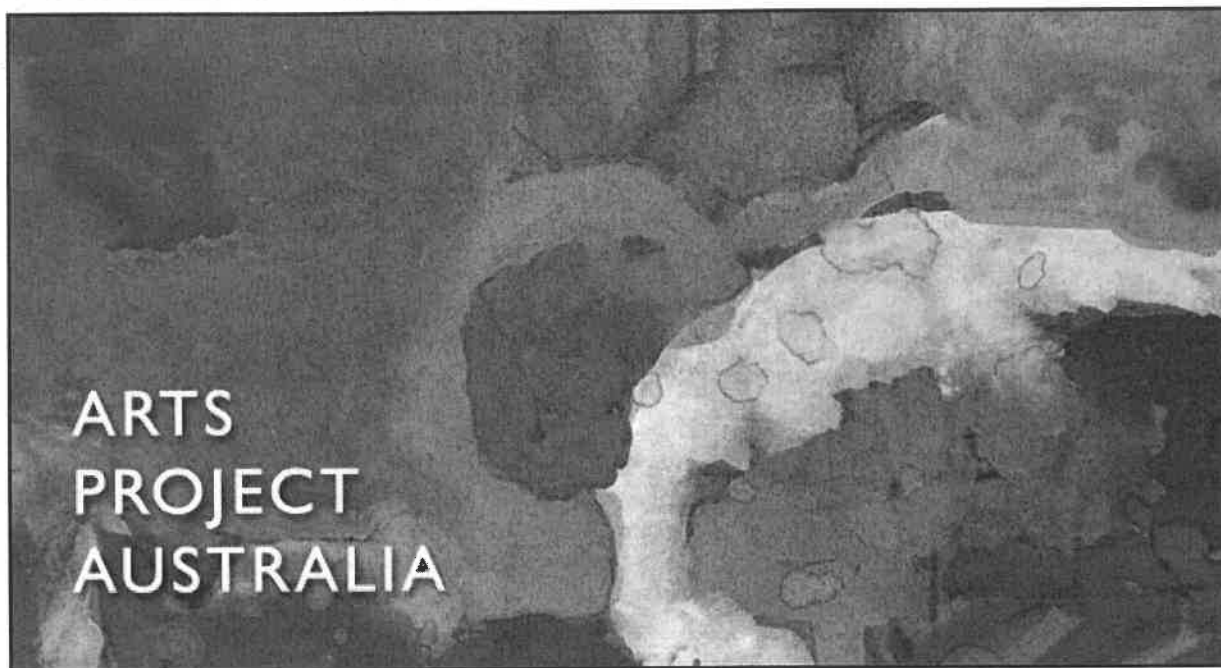




If you are having problems viewing this email, view the [online version](#).



## Welcome back!

This year promises to be another spectacular one for Arts Project Australia with planning for many wonderful exhibitions and events both within the gallery and at external galleries already well underway.

Starting off this year in the gallery is [Anne Lynch Solo](#) and [Walking the Line](#) (both opening on Sat 9 Feb). In March we will be hosting our special fundraising event - [Dining with Art](#) to take place on Thurs 14 March. We have also [revamped our website](#) which as a new addition includes a [blog](#). Also in this enews we provide details of three current exhibitions featuring work by Arts Project Australia artists: Magic Mountain at Craft, Art & Australia Collection 2003 - 2013 at Newcastle Art Gallery, and the Linden Postcard Show at Linden Centre for Contemporary Arts.

## NEWS

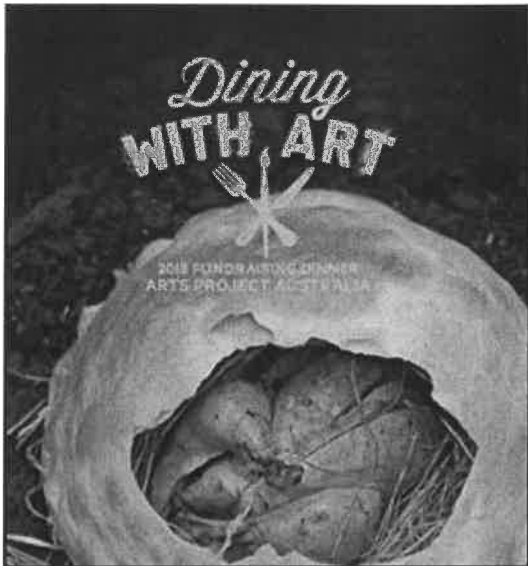


## Brand New Year - Brand New Website!

Thanks to our web providers [Web Prophets](#) our [website](#) has a new look! We wanted a look that was fresh, clean, appealing and user friendly which we hope you will enjoy!

As mentioned we have also added a [blog](#) to the website so be sure to take a look! Expect to hear from new and diverse voices in the coming months on our blog giving visitors even more insight to the goings on of Arts Project!

[VISIT WEBSITE >](#)



## Fundraising Dinner - *Dining with Art*

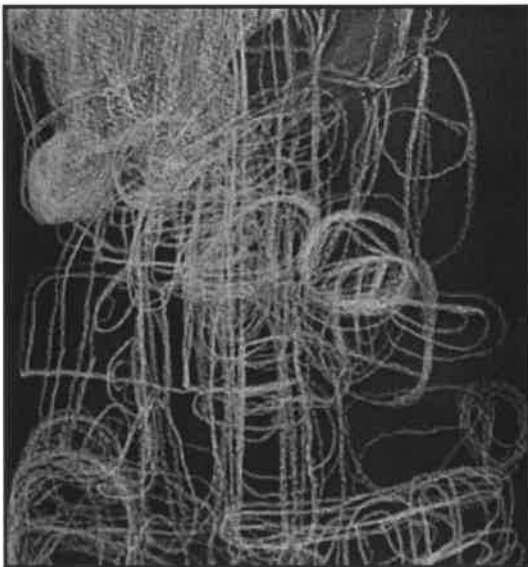
Thursday 14 March 2013 from 7pm - 10:30pm  
Arts Project Australia Gallery

*Dining with Art* will offer an exceptional night of art, food and wine at the Arts Project Australia gallery. As part of the Melbourne Food & Wine Festival 2013 Umbrella Events Program, a celebration of 'Earth', the Arts Project gallery will host an exclusive fundraising dining event.

Dining in the Arts Project Australia gallery amongst food inspired art will give guests an exclusive preview of the exhibition, '*At the Table*' together with a unique art, fundraising & dining experience with an earthy, seasonal menu by Merricote's Rob Kabboord.

[READ MORE >](#)

## EXHIBITIONS



## Walking the Line

9 February - 12 March 2013  
Exhibition Opening Sat 9 February from 3-5pm

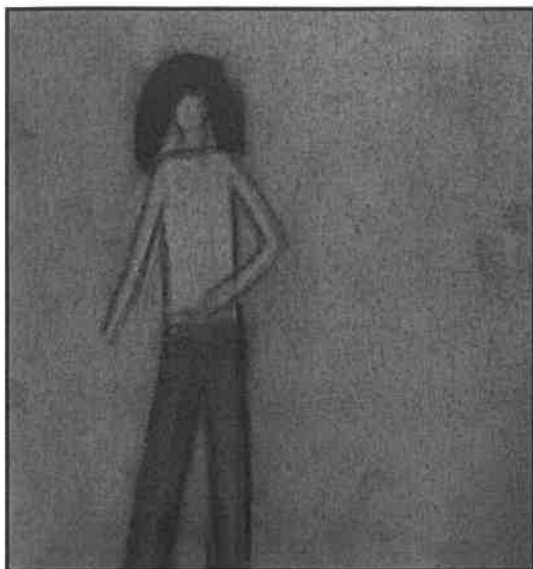
Often the starting point for artists, the use of line is perhaps one of the simplest and most immediate means of communicating an idea. *Walking the Line* seeks to show the beauty, engagement and richness of artistic responses to line and mark making through drawing, works on paper and printmaking by Arts Project Australia artists. A continuum of the journey of line and mark making from the fragile and delicate, to the bold, structural and multi layered will be shown. This exhibition aims to demonstrate the confidence in the use of line and mark making by artists of Arts Project Australia as well as presenting work that is infused with freshness, fervour and exploration of mediums.

[READ MORE >](#)

## Anne Lynch Solo

9 February - 12 March 2013  
Exhibition Opening Sat 9 February from 3-5pm

In works that carry an air of nostalgia, Anne Lynch's drawings have a rich use of colour and sense of space. In what are often dream like scenes, individuals feature in still, vast landscapes under large hovering clouds, or in more recent works lone



figures are suspended in gentle fields of glowing colour. In her first solo exhibition at Arts Project Australia, beauty, isolation and melancholy are triumphantly summoned by Lynch.

[READ MORE >](#)

## MORE...



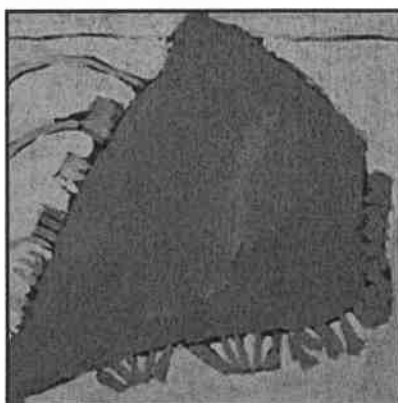
### Featured Artist

Brigid Hanrahan

Brigid Hanrahan's work has featured in many group exhibitions including Home Sweet Home: Works from the Peter Fay Collection at the National Gallery of Australia.

Hanrahan's signature works are often figurative interpretations and delicate, expressive line drawings inspired by ballet dancers from the Australian Ballet. Hanrahan's work is also featured in *Walking the Line*.

[READ MORE >](#)



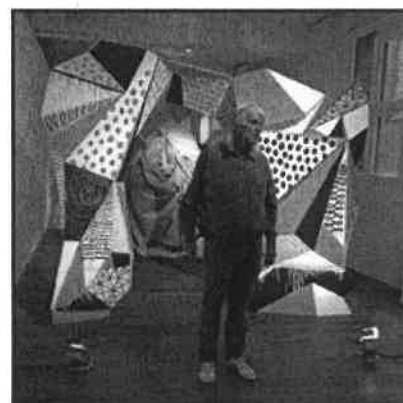
### Linden Postcard Show

Until 23 March 2013

Linden Centre for Contemporary Arts

Linden Centre for Contemporary Arts is once again hosting their highly popular annual Linden Postcard exhibition, an open entry small format show which attracts vast entries and large numbers of visitors. This year Arts Project has selected small format work by Clarke Bourizk, Michael Camakaris, Peter Cave, Robyn Doherty, (work shown above) Bobby Kyriakopoulos, and Michael Trasancos. Till Saturday 23 March 2013.

[READ MORE >](#)



### Magic Mountain

Until 2 March 2013

Craft

Terry Williams stunning contribution to Magic Mountain is currently on display at Craft. Magic Mountain runs till Saturday 2 March 2013.

The intensely physical construction of his sculptures is juxtaposed with the more metaphysical concept of the factory-built 'flying machine'.

[READ MORE >](#)



## Art & Australia Collection

Until 17 February 2013  
Newcastle Art Gallery

Patrick Francis' wonderful work is currently on display in Art & Australia collection 2003-2013 at Newcastle Art Gallery till 17 Feb 2013. The exhibition will tour nationally in 2013-2014.

[READ MORE >](#)

## Dining with Art

Thursday 14 March 2013  
Arts Project Australia Gallery

*Dining with Art* will offer an exceptional night of art, food and wine at the Arts Project Australia gallery. As part of the Melbourne Food & Wine Festival 2013 Umbrella Events Program, a celebration of 'Earth', the Arts Project gallery will host an exclusive fundraising dining event.

[BOOK NOW >](#)

## Latest Blog

Artists First, Disability Second  
By Sue Roff

For the past four years I have been responsible for running an organisation that specifically exists to support artists with intellectual disabilities, promoting their work and advocating for their inclusion within contemporary art practice.

[READ MORE >](#)

## OUR SPONSORS



**LEONARD JOEL**  
Est 1919

## SUPPORT US

We are a non-profit organisation. Your donations assist us in continuing our work and making a difference.  
We need your support.

[MAKE A DONATION >](#)

## GALLERY

Monday to Friday 9am - 5pm  
Saturday 10am - 5pm

## CONTACT

24 High Street, Northcote, Vic 3070  
T + 61 3 9482 4484  
E [info@artsproject.org.au](mailto:info@artsproject.org.au)



[WWW.ARTSPROJECT.ORG.AU](http://WWW.ARTSPROJECT.ORG.AU)



This newsletter is brought to you by [Arts Project Australia](#) and delivered by Web Prophets [Etools Software](#).  
You are receiving this email because you have subscribed to be on the Arts Project Australia mailing list. If you no longer wish to receive emails, do not reply to this email. Please use [this link](#) and you will be unsubscribed. Etools takes the Spam Act 2003