

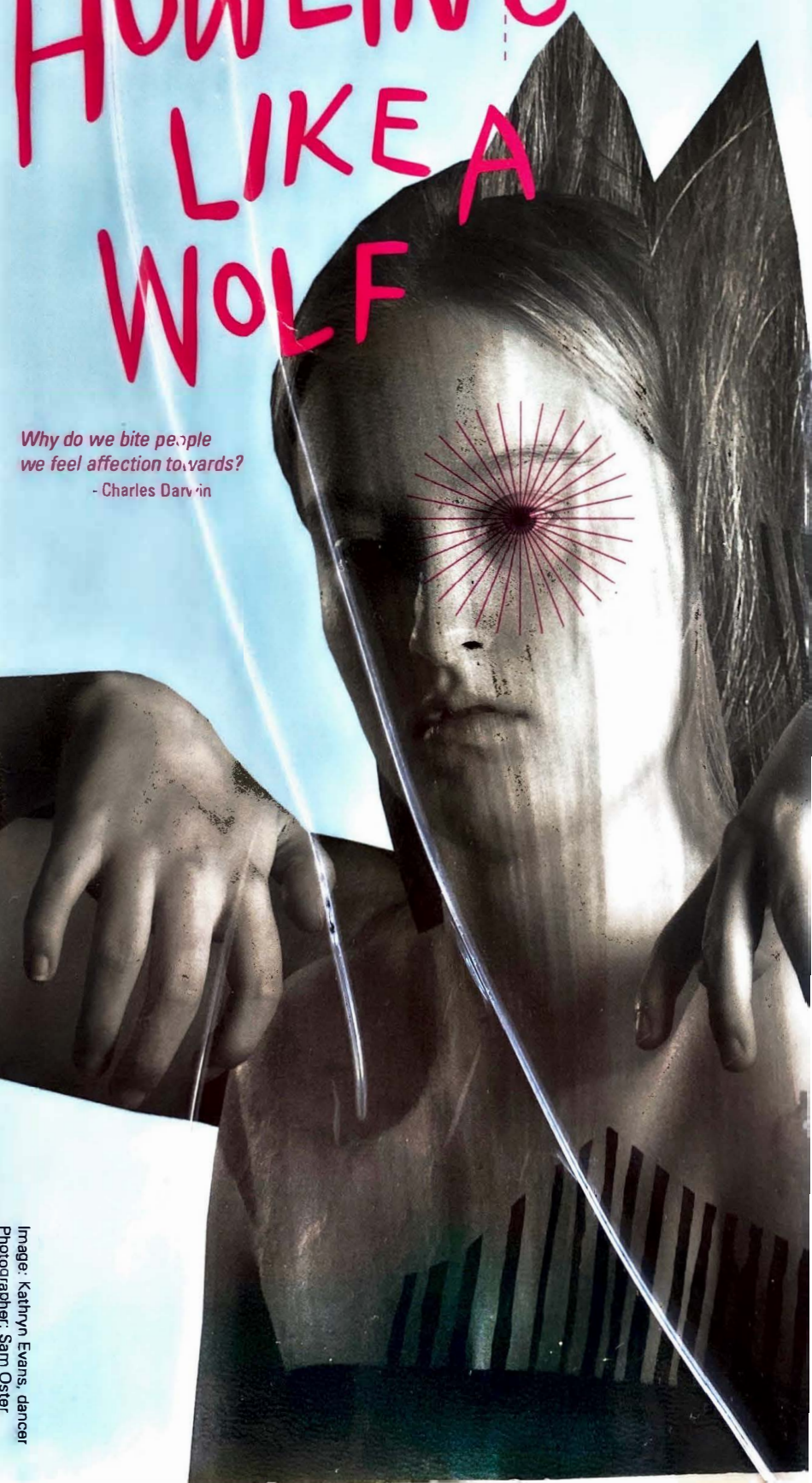
THE QUEEN'S THEATRE  
PLAYHOUSE LANE, ADELAIDE  
17 - 25 AUGUST 2012

RESTLESS  
DANCE  
THEATRE

# HOWLING LIKE A WOLF

*Why do we bite people  
we feel affection towards?*

- Charles Darwin



## Tickets

\$25 Adult

\$15 Concession

Students

Ausdance members

\$20 Groups (6+)

**Special offer  
preview**

6.00pm Fri 17

all tickets \$15

## Bookings

phone Restless

8212 8495

Promenade

performance

general admission

Duration: 1 hour,

no interval.



**Friday 24**

**August 6pm**

Auslan  
Interpreted



Audio  
described



Visual  
content



and post show  
forum

*"Learn about the timber wolf. It's extremely important that you understand the animal's behaviour, biology and signs before setting out for the forest..."*

How do I know what you are thinking?

Why are some of your facial expressions harder to read than others? How can I tell when you are lying to me? Why do I bite people I feel affection towards?

Restless Dance Theatre's new work *Howling Like A Wolf* examines the science of non-verbal communication between humans.

Be: Stunned by Duchenne's pioneering electric-shocks-to-the-face research. Enlightened by Charles Darwin's theories on man and animal. Influenced by body language guru Allan Pease. Hoodwinked by deception specialist Paul Ekman.

Queen's Theatre will be transformed into a surreal laboratory where theories are tested, where consequences play out.

*"I've been eye contacting again..."*

Direction

Zoë Barry

Design

Geoff Cobham

Sound & music

Jed Palmer

Dramaturgy

Kate Sulan

Costumes

Mariot Kerr

Projection design

Adam Synnott, Kaboom Studio

AV systems design

Chris Petridis

Performers

The Restless Dance Theatre Youth Ensemble with guests from Company@, Tutti Inc. and No Strings Attached Theatre of Disability

Sessions

TIME

August 2012

Daytime

12:30PM

21, 22, 23, 24

Early evening

6:00PM

18, 23, 24, 25

Late evening

8:30PM

17, 18, 24, 25

Restless Dance Theatre gratefully acknowledges the support of the Dance Board and the Community Partnerships Section of the Australia Council, the Federal Government's arts funding and advisory body and the South Australian Government through the Carclew Youth Arts Board and Arts SA.



Government of South Australia  
Arts SA

**CARCLEW**  
YOUTH ARTS