

EASE Christmas

The EASE office will be closed on December 26 & 27, and January 2.

This Space for Hire

Promote entertainment events, venue facilities, or products and services of interest to EASE members through the 1995 editions of the quarterly *EASE* newsletter and the monthly *EASE Ticket Update*.

Contact: Vivian Carroll, Public Affairs Manager, Arts Access (03) 699 8299

Booking with EASE

Booking Office Hours
Monday to Thursday
10am - 4pm only

What's On?

First check your daily papers, free entertainment guides and other sources of information, then check EASE dates in the *EASE Ticket Update* before booking.

Bookings

Phone Lisa on 699 8497
or TTY 699 8497

Access Information

EASE can provide information about access and facilities at venues in and around Melbourne.

Method of Payment

Pay at the EASE office or by posting a cheque or money order made out to ARTS ACCESS. Payment is never made at the venue. Please note Items 4 and 7 of the Conditions of Sale.

Conditions of Sale

1. Tickets are sold only to EASE subscribers and are not transferable.
2. Tickets are sold to staff members of an organisation on the understanding that they are attending an event as a support person for the clients of that organisation, and under no other circumstances.
3. There is no exchange or refund of tickets. A booking cannot be cancelled.
4. Tickets must be paid for within 14 days.
5. EASE will purchase tickets, where possible, to suit a subscriber's particular requirements.
6. The EASE quoted price varies from the price printed on tickets because an EASE commission is added to each sale.
7. EASE staff reserve the right to cancel or suspend membership if conditions of sale are breached.

Ease

Entertainment Access Service

109-111 Sturt Street
SOUTH MELBOURNE VIC 3205

Bookings & TTY: 699 8497
Administration: 699 7636
Fax: 699 8868

EASE Staff

Dean Michael - EASE Project Officer
Lisa McKoy - EASE Bookings Officer

Volunteers

Jim Catts, Roisin Johnson, John Pidd, Gaye Walsh, and NADRASCA volunteers.

EASE is a project of Arts Access and is funded from a range of sources, particularly the Federal Department of Community Services and Health (Disability Services) and Sport & Recreation Victoria. Income earned through service fees, subscriptions and ticket commissions helps support the project.

Arts Access is assisted by Arts Victoria and the Commonwealth Government, through the Australia Council, its arts funding and advisory body.



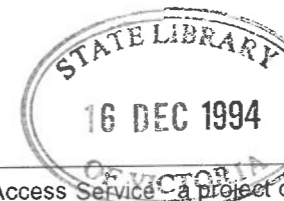
EASE is a newsletter of Arts Access Society Inc.
Registered by Australia Post
Print Post Publication No. PP 325649/1004

Postage
Paid
Australia

Ms Michelle Hosking
State Library Of Victoria
328 Swanston Street
MELBOURNE 3000

If undelivered return to:
Arts Access Society Inc.
109-111 Sturt Street, South Melbourne, VIC 3205 Australia

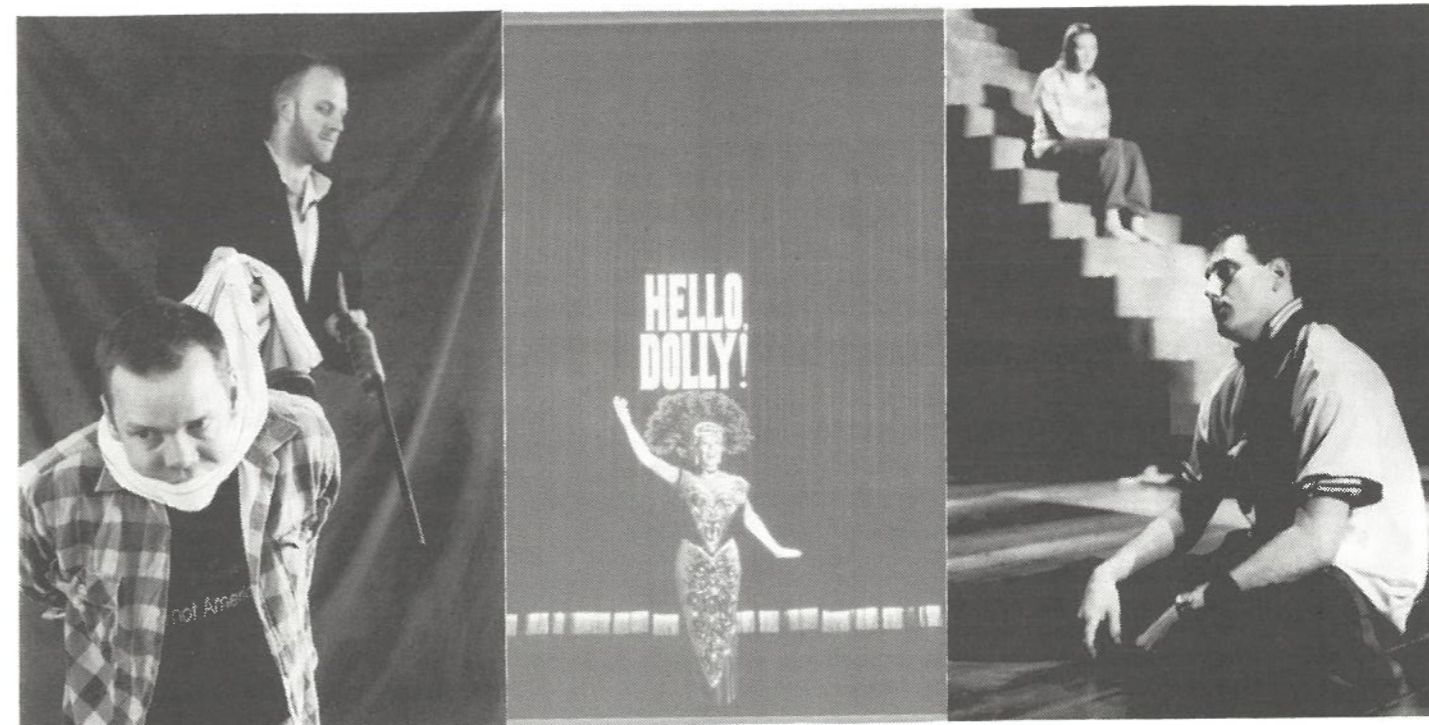
Ease



Celebrating 20 Years of
Participation, Innovation
& Excellence 1974-1994

ARTS Access

Newsletter of the Entertainment Access Service a project of Arts Access ISSN 1038-2879 Summer 94/95



From left: Soul Theatre's production of *A Lie of the Mind* at St Martins runs until December 8; *Hello Dolly* opens on December 31; *Sweet Phoebe* opens at the CUB Malthouse on February 24.

Summer entertainment sizzles with EASE

Once again, EASE has a hot selection of summer shows to choose from.

The 'Ticket Highlights' column on page 3 provides a quick reference to major shows, and the monthly *EASE Ticket Updates* during summer will provide details of dates and times and many more events.

Soul Theatre's production of *A Lie of the Mind* presents Sam Shepard's modern classic from a disability perspective, featuring Soul's founder, Alicia Liley, whose experience of severe head injury has informed her performance work.

Brisbane's 'Rock'n Roll Circus' presents *Body Slam*, a 'human' circus troupe that promises 'no sawdust or animal droppings', but a fusion of 'loud' music, dangerous rough and tumble acrobatics, and

raw edged commentary on body image and body obsession. NB: This show involves strobe lighting and some nudity.

The MTC is staging a return season of Morris Gleitzman's comedy, *Blabbermouth* - a great show for kids. Check the *EASE Ticket Update* for dates of signed performances of this play.

Summer Live is a special concert, dance and film series covering a range of musical styles and tastes. EASE is currently negotiating for tickets to these events.

Melbourne's much loved summer season of theatre in the Botanical gardens continues with Shakespeare's, *Romeo and Juliet*; the perennial Botanical Gardens favourite, *Wind in the Willows*; and a new production of the children's classic, *The Secret Garden*.

INSIDE:

- * Wheelchair seating at the new 'Fairfax'
- * Venue Profile: The CUB Malthouse



Above: The foyer of the CUB Malthouse provides level access to the ground floor theatres, houses the Malthouse Cafe, and provides the setting for The Malthouse Club.

EASE Bookings: 699 8497 10am to 4pm Mon -Thurs

AF
790.19605
EA7

EDITORIAL

1994 has been another fantastic (and busy) year for EASE in which we have continued to expand our range of events and services. EASE 'firsts' in 1994 included:

- * Information and training sessions covering issues faced by people with disabilities, the Disability Discrimination Act and the servicing of people with disabilities at venues.

- * Inclusion of amateur theatre listings in the *EASE Ticket Update*.

- * More sporting events with the introduction of low cost tickets to cricket, netball and Melbourne Magic Basketball matches.

- * Expansion of low cost ticketing to include events at the Alexander Theatre, Monash University and the George Jenkins Theatre, Frankston.

In 1995 we hope to expand our ticketing to include tours to sites in and around Melbourne and regional Victoria.

EASE takes this opportunity to thank all the people who's support has enabled us to provide premium quality entertainment and sporting events to our hundreds of members. These include the many promoters, venue managers, box office and front-of-house staff who have provided us with fantastic service over the year.

Special thanks to our many volunteers for their great work and ability to put up with very bad coffee!

We wish everyone a happy and safe Christmas and best wishes for the New Year. We look forward to seeing you in 1995.

Dean & Lisa

EASE Ticket Payments

are due strictly 14 days after receipt of invoice. A 3% charge is added to overdue accounts to cover expenses and time. Consistent late payers will be asked to pay in advance.

NEWS

Neighbourhood Houses Training

EASE Project Officer Dean Michael, recently conducted a Disability Awareness Seminar with Coordinators of neighbourhood houses who are also interested in developing arts programmes with their participants.

As with the previously successful seminar held with BASS staff, areas covered included the DDA and strategies on how to appropriately service people with disabilities. Once again the section that had the most impact was the panel of people with disabilities who spoke about their individual experiences.

"There is an enormous level of demand from service providers to understand the issues for people with disabilities", said Dean. "We will be taking similar training to the wider arts community throughout 1995".

For more information about the training seminar speak with Dean on 699 7636.

EASE out and about

EASE mounted an information stand at the recent Disability - Recreation Conference, organised by VCOSS and held at the Royal Exhibition Buildings from November 24-25.

Playhouse ushers in new access policy

One night in August, an EASE member attending The Playhouse had no success in obtaining refreshments at interval because the bar at the wheelchair box level was closed.

In response to the incident the Victorian Arts Centre has introduced a policy to prevent this from occurring.

If the audience at a performance is small in number, the upstairs refreshment bar on the level of the wheelchair box seats, may not be attended.

It is now the responsibility of the Front-of-House (FOH) Manager to personally escort wheelchair patrons from that level to the nearest level that

has a refreshment bar open. The FOH Manager will also arrange for the patron's return.

The Circle Usher is responsible for patrons in the wheelchair area and it is his/her responsibility to contact the FOH Manager to assist you.

Bye-bye Russell Street - Hello The Fairfax!

The MTC has now closed its Russell Street Theatre and will be moving into 'The Fairfax', formerly known as the George Fairfax Studio, at the Arts Centre.

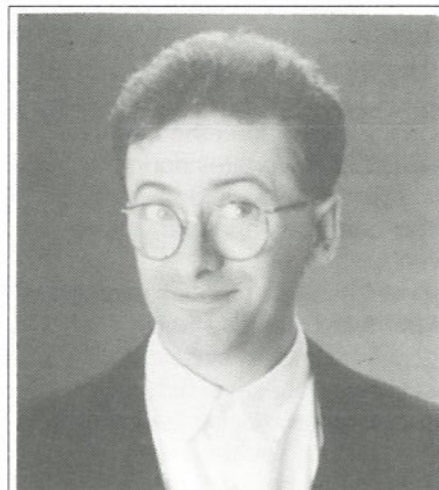
The Fairfax is currently undergoing a major renovation and while it remains a tiered theatre, staff have been careful to ensure that patrons with wheelchairs can now be placed in the body of the seating - not just at the end of a row or on an aisle.

Some seats can be removed to accommodate wheelchairs so that patrons can sit with their companions, and there's potential for more seats to be removed in the mezzanine areas at the sides. As the entire seating plan is now in the 'half-round' all wheelchair positions have good views of performances.

Congratulations MTC!

EASE Venue Guide

EASE is still offering both editions of *The Melbourne Venue Guide* for only \$2.50 (postage and handling). Send a cheque or money order to: Venue Guides, EASE/Arts Access, 109-111 Sturt Street, South Melbourne VIC 3205.



Who's Numero Uno in 1995?
Watch this space

Venue Profile

The CUB Malthouse

Our members have enjoyed some of Australia's best theatre productions at The CUB Malthouse - home of longstanding EASE supporters, the Playbox Theatre Company.

But The Malthouse is also the site of many special performance events and EASE has tickets for many of them. Look out for independent drama seasons, the Greenmill Dance Project, one-off comedy, jazz, rock, new and classical music. There's also the new Malthouse Club, which will feature a wide range of music in February, April and July 1995. The Malthouse Cafe is open whenever shows are playing and offers tasty, affordable food, great coffee and bar service.

Access into the foyer and the ground floor theatres is level. Toilets are accessible and there is space for two cars in the disability parking bay in Sturt Street. The South Melbourne tram (No. 1) stops directly opposite.

Note that all tickets are 'general admission' and cannot be reserved. So if you have special seating needs, inform the booking staff and upon arrival (at least 30 minutes prior to start of a show) contact the front-of-house manager so that suitable arrangements can be made for you.

Audio Description

All bookings for Audio Description performances are through EASE on 699 8497. Subscribers are advised to book well in advance.

Hot Shoe Shuffle - *Princess Theatre*
Saturday, December 10, 2pm
Wednesday, December 14, 1pm

A Flea In Her Ear - *The Playhouse*,
Saturday, January 19, 4pm
Thursday, January 19, 8pm

Hello Dolly - *State Theatre*
Saturday, February 4, 2pm
Thursday, February 9, 7.30pm

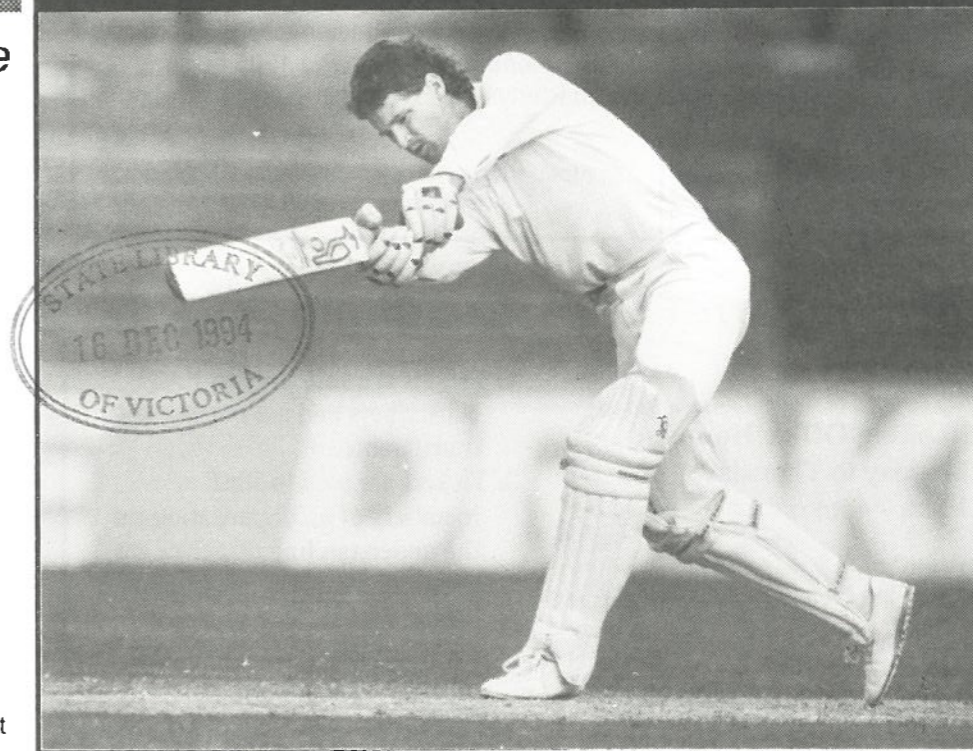
Arcadia - *The Playhouse*
Saturday, March 18, 4pm
Thursday, March 23, 8pm

Signed Performances

Arcadia - *The Playhouse*
Monday, March 20, 6.30pm

Blabbermouth - *The Fairfax*
Monday, January 30, 6.30pm

EASE Ticket Highlights



Above: Dean Jones, one of Australia's most accomplished Test players. EASE has tickets to Mercantile Cup and Sheffield Shield matches in Melbourne. Details below.

CINEMA

Be prepared for the holiday movie season. Buy your Hoyts tickets as soon as possible. Don't miss out!

DANCE

- * *The Snow Queen*
Australian Ballet School
One show only: Sunday, Dec 11, 1.30pm.

- * *The Green Mill Dance Project*
Currently negotiating for more tickets to this annual festival and conference program to be held early in 1995.

MUSIC - CLASSICAL

- * *Melbourne Symphony Orchestra 1995 Season*
Tickets on sale from February 18.

MUSIC THEATRE

CONCERT HALL - Arts Centre

- * *Jesus Christ Superstar*
The season begins on February 3. EASE has seats to all performances!

STATE THEATRE - Arts Centre

- * *Hello Dolly*
With Warren Mitchell. Opens Dec 31.

PRINCESS THEATRE

- * *Hot Shoe Shuffle*
With the amazing Tap Brothers. Due to close at the end of December!

SPORT

- * *Cricket: Mercantile Cup: VIC v QLD*, Sunday, Feb 19. *Sheffield Shield: VIC v SA*, Feb 3-6; *VIC v QLD*, Feb 15-18; *VIC v SA*, Mar 16-19.

- * *Tennis: Ford Australian Open* - night games only, during the first week.

THEATRE

THE CUB MALTHOUSE

- * *Sweet Phoebe*
by Michael Gow
When a couple from 'well adjusted' suburbia enter a chaotic landscape their marriage is laid bare. Opens Feb 24.

- * *Body Slam*

by Rock'n Roll Circus
Adult 'new circus' featuring stunning physical theatre.

THE PLAYHOUSE - Arts Centre

- * *Oleanna*
by David Mamet
Melbourne Theatre Company production of the controversial play about a sexual harassment case.

ST. MARTINS: Irene Mitchell Studio

- * *A Lie of the Mind*
by Sam Shephard
A 'love ballad' challenging 'rationality' in human relationships.

For more shows and details check the EASE Ticket Update

The LARGE PRINT edition of the *EASE Ticket Update*

is now available from Lisa on Phone or TTY 699 8497