



ARTS ACCESS

ANNUAL REPORT 1998–1999

AP
790.19606
AR7
(1998/1999)

Twenty Fifth Anniversary

Established in 1974



CONTENTS

Page

Mission Statement	2
Chair's Message	3
Founder's Message	4
Executive Director's Report	5
Artistic Program	7
EASE	11
Training and Professional Development	13
Public Relations	15
DADAA	17
Board, Staff and Volunteers	18
Artistic Program Credits	19
Financial Statements	22

"My experience of Arts Access has been one of strong vision mingled with open mindedness and flexibility. My major involvement was in the development of a dance project, which started as a short-term series and became a mature, cohesive, ongoing ensemble. I was impressed by the continuing support given as the group took on its own unique flavour and moved towards its aim of public performance as a truly integrated company of artists with and without disabilities.

The Artistic Program Manager has always displayed dedication and a sense of humour, while being canny, adventurous, ever helpful, friendly and knowledgeable. Thanks Arts Access for the opportunity to exist and to be nurtured towards maturity. I personally have also always been a great fan and frequent user of the EASE service. It has admitted me to a diversity of performance that I otherwise could not afford to experience."

Janice Florence

Director of Weave Movement Theatre and founding member, State of Flux Dance Company

"Arts Access has been an important contributor to my professional development as an artist. The respect I receive as an artist, alongside the expectations of artistic professionalism, has in turn inspired me to give my best. Every project I have worked on has opened up many more possibilities than I had originally imagined, which is a tribute to the openness of the participants but equally to Arts Access' openness in embracing artistic ventures."

Gali Weiss

Artist

Piccola Festa at Casa Serena SRS



Twenty Fifth Anniversary

Established in 1974

"Arts Access is many things to many people. To The Big Bag Band, regionally based in Geelong, it has given artistic support, networking and professional experiences. In fact, our 1996 Japanese showcase performance resulted from a referral to us by Arts Access. Over the 15 years in which we have had contact with Arts Access, we have always respected their professionalism and commitment and their vision which is non-patronising to the artists with whom they work.

More recently Club Wild, Victoria's first fully accessible music & dance club, a successful collaboration between ourselves, Arts Access and Community Music Victoria has demonstrated that Arts Access is prepared to work at the cutting edge of contemporary arts practice."

Rob Gador

Director, Club Wild

"Arts Victoria is proud of their long-standing association with Arts Access, who are leaders in the development of strong partnerships and innovative programs. Their clarity of purpose and the high level of commitment from staff and Board of Management have ensured that the company remains responsive and continues to build on its twenty-five year history. Happy Anniversary Arts Access and all the best for the future."

Lesley Alway

Director, Arts Victoria

"BreastScreen was interested in developing a community arts project as part of our community information strategy – Arts Access helped turn our ideas into a reality. The partnership with Arts Access has been enormously beneficial for BreastScreen and for women. The professionalism, management skills and commitment of Arts Access have delivered opportunities for BreastScreen to engage women in the BreastScreen program and for women to engage with the arts. I trust the next 25 years of Arts Access will bring even more health workers and artists working together for the benefit of the community. Happy Birthday Arts Access."

Frances Diver
BreastScreen Victoria

"I would like to congratulate Arts Access for all that it has achieved in 25 years in helping disadvantaged people to participate in the arts, thereby enhancing their lives."

Dame Elisabeth Murdoch



MISSION STATEMENT

Arts Access is a professional arts organisation which facilitates opportunities for participation in arts and cultural activities for people with a disability and people who are disadvantaged.

The vision for a community which provides equal access, choice and active participation in the arts for all people is achieved in partnership with people with a disability and people disadvantaged by social conditions through alliances with the arts industry, government and community agencies.

Arts Access also presents training programs for artists and community development workers in disability awareness, arts practice and strategies for working in community.

Arts Access provides an international model of 'best practice' in access programs and services.

Since 1974, Arts Access has facilitated:

- more than 25,000 opportunities in arts and cultural activity for people with a disability and people who are disadvantaged
- the sale of more than \$1.5 million worth of tickets to arts and entertainment events through its EASE Ticket Service
- more than 600 arts projects with in excess of 15,000 participants
- employment of more than 2000 artists
- a nationally acclaimed industry based training program in disability awareness and artistic project management
- a unique collection of arts and disability resources.

Arts Access has initiated hundreds of artist-in-residence projects which have involved a wide range of participants and community settings including people with physical, sensory, intellectual or psychiatric disabilities; people receiving hospital care; drug and alcohol rehabilitation programs; homeless or at-risk young people; young people in remand or training centres; prisoners; elderly people in nursing homes; isolated residents in supported accommodation; and groups promoting public health issues.

Significant achievements include:

- regional and national touring exhibitions
- model artistic programs of national significance
- international cultural exchange
- professionally managed arts projects involving more than 500 people annually in partnership with a wide range of community based organisations
- employment of around 60 professional artists annually on projects using a wide range of art forms
- new career paths for professional artists working in the community
- opportunities for people with a disability to move into tertiary arts training and professional arts practice
- training programs in disability awareness for the arts and cultural sectors, community arts events and project management, recreation and community services and arts practice with people with a disability
- forums for exploration of development issues in arts and disability
- arts and cultural development within non-arts sectors, such as the health and community services sectors.

Art Day South participants visit Braeside Park Art Shed



CHAIR'S MESSAGE



*It is the artists' creativity,
professionalism,
understanding and
special affinity with the
community that has
sustained Arts Access
over its first 25 years.*

In 1974, I attended a public meeting to explore the setting up of an organisation to provide participatory arts programs for the disadvantaged community. Two and a half decades later, Arts Access is celebrating 25 years as a business which in every sense is a resource organisation playing a significant role as an arts provider within Victoria and as an exemplar for advice and guidance to other similar organisations founded around Australia.

When Arts Access began, the central thought was to establish the rights of people disadvantaged by disability or economic circumstances to a full share of the fulfillment available through the arts, as both participants and audience members. It was hoped that the concept would be adopted so enthusiastically that recipient institutions and groups would develop and fund their own projects, with Arts Access quickly becoming redundant.

This did not happen. Many institutions did in fact proceed to resource their own programs, sometimes independently, more often with the continuing advice and guidance of Arts Access. The emergence of new needs, new areas of arts activity, the expectation of continuing support from those involved with Arts Access generated programs, a growing number of clients and wide recognition of the professional skills and expertise of Arts Access has given continued vitality and growth.

A key factor in all of this is the commitment and special talents of the artists who make the projects possible. It is their creativity, professionalism, understanding and special affinity with the community that has sustained Arts Access over its first 25 years. This has been made possible by a dedicated and talented staff and the commitment of Board members whose time and energy have supported the staff and their aspirations in bringing the arts to the community.

It is particularly pleasing that in its 25th year, Arts Access is moving into newly renovated premises – the culmination of more than five years of searching, planning and hoping for the right place to turn up.

Arts Access looks forward to the new millennium with confidence!

ALAN MOOR
Chair

AF
790.19606
ART



FOUNDER'S MESSAGE



I am honoured and delighted to join with the Arts Access community to celebrate the first 25 years. Looking back over a quarter century, I read a remarkable story of vision and dedication on the part of numerous individuals and groups working together to create a unique arts organisation that recognises and enhances the centrality and the power of creativity in everyone's life.

Like many others, I have treasured memories of those inspiring moments when the unlimited potential of the human spirit was made manifest in the work of Arts Access – the performance that gives voice to unspoken experiences; the painting that expresses the sorrows and hopes of its creators; the festival that celebrates life and community.

Our 25th anniversary marks not an end, but rather the opening of a new era with new challenges and new achievements. I know that Arts Access will continue to grow and will continue to provide those creative opportunities for many people for many years to come.

JUDY MORTON
Founder



Mosaics and Creative Tiling Workshop



Seasational Mystic Mariner Exhibition, Queenscliff

*I have treasured memories
of those inspiring moments
when the unlimited potential
of the human spirit was
made manifest in the work
of Arts Access*

EXECUTIVE DIRECTOR'S REPORT

In 1999 Arts Access celebrates 25 years of remarkably successful operation. I am immensely proud to work with an organisation which is so valued and respected; an organisation which achieves its success because of the integrity of philosophy and practice and the unstinting commitment of all involved in its activities.

At the beginning of 1999 the Board undertook a strategic planning process which has examined the directions, priorities and resource allocation for the organisation. The dedicated focus of Board members and their willing commitment of expertise, energy and enthusiasm is a key part of Arts Access' success and the staff sincerely appreciate their interest and support.

During 1998 and 1999 Arts Access has achieved significant outcomes including:

- an award for best practice in disability services from the Department of Human Services for the Art Day projects
- a commission from Arts Victoria and the Australia Council to develop and deliver a series of seminars on marketing the arts to people with a disability to coincide with the national release of *Access All Areas*, a publication on which Arts Access collaborated with Accessible Arts (NSW)
- development and publication of a calendar of works created during the Saturday Morning Art Classes for people with a psychiatric disability
- new project partnerships with community based organisations, including OPENChannel, BreastScreen Victoria, and government agencies, including the Rural Health Unit of the Department of Human Services
- implementation of the new logo and corporate image completed by FHA Image Design
- securing a long-term lease on new offices in South Melbourne
- registration in the Australian Industrial Relations Commission of the Arts Access Enterprise Agreement which has made equitable and clear terms and conditions of staff employment
- significant improvements in information technology equipment and application.



Arts Access operates on a strong foundation of respect – respect for the rights of all people to participate fully in the life of the community; respect for the role which art and creativity play in people's lives; respect for the ability of everyone to make a valuable contribution to society through the expression of their aspirations, hopes and ideas.

When I accepted the position of Executive Director in July 1997, I was encouraged by the high calibre of Board and staff members. In the subsequent two years there have been significant changes in personnel. It is a testament to Arts Access' reputation and outstanding record that there has been no lack of expert and dedicated people to replace those who have moved on.

At the end of 1998 Laurie Reilly departed his position as Arts Access' Honorary Treasurer. For many years he provided diligent stewardship of the organisation's resources and set in place a financial administration that assured the stability of the organisation. We thank you, Laurie, and look forward to your ongoing relationship as a friend and guest.

In 1999 there were a number of staff changes. Some of these were the result of changes in the strategic direction and priorities of the organisation. It was with regret that Arts Access farewellled Dean Michael and Martin Wurt. Barbara Doherty, for five years the driving force behind Arts Access' Art Day projects for adults with an intellectual disability, resigned to spend time with her baby daughter. Ali Dart moved to NSW, taking with her Norman (the Beagle) who provided much entertainment and a different style of welcome to Arts Access. Bridget Butler, who provided administrative assistance to the Training Program in 1998, has departed to pursue other opportunities. All made a considerable input to the organisation and their professional and personal contribution is missed.

In their places Arts Access has gained some terrific new team members – Jo Cohen who has adeptly managed the Art Day projects and made an invaluable contribution to the Artistic Program; Rachel Devine who has taken up duties as part-time Office Manager and has proved a terrific asset to the organisation, being a great organiser and calm presence in the face of day-to-day challenges; and Sharyn Dawson who oversees 'front desk' on the other days of the week and assists Fiona with the EASE Ticket Service.

Another great addition to the staff is Caroline Cowley, who provides her skill and knowledge to the marketing and public relations of Arts Access. She has managed the implementation of the new corporate image and, as well as achieving publicity for the organisation and its activities, initiated some impressive event coordination.

One of the most important features of an annual report is the opportunity to publicly acknowledge those people who contribute to the success of the enterprise. In the case of Arts Access, these are many.

For the long running accommodation saga, Arts Access is grateful to John Coe (of John Coe and Associates) and Warren Hogan (of project planning and management pty ltd) for the generosity with which they made time to provide advice and assistance. A very special thank you is due to Mark Healy of Six Degrees – he has imaginatively responded to the various and often competing expectations of staff, visited numerous potential sites, drawn up refurbishment plans for at least three properties and, throughout the entire period, remained positive, tolerant and encouraging.

For the almost equally protracted time it took to finalise and introduce Arts Access' new logo and corporate image, we commend the inspiration and patience of Richard Henderson and his colleagues at FHA Image Design.

Big thank yous are also due to our esteemed life members – Judy Morton and Dinnie Downie – who kindly retraced history to identify a number of past associates for our donations campaign. It is a wonderful asset for Arts Access to retain their care and commitment.

Most significantly I wish to acknowledge the staff – which includes those in the office (in particular the hardworking program managers and project officers – Jedda Bellerjee, Fiona Hanrahan, Ruth Whittingham, Anne Riggs,

Alex Prior and administrator Mario Agostinoni), the many artists and support workers involved in projects and also the volunteers, especially Christine Rutter, who contribute their time and skills to the organisation. It is a truism that the organisation would be nothing without them – but their enthusiasm, effort and achievements are notable and provide an energy and profile for Arts Access which is vital for its continued growth and development.

The funding and project partners which support the work of Arts Access also deserve commendation. Through their support for the organisation they demonstrate an admirable commitment to ensuring that people with a disability and people who are disadvantaged are provided with an equality of access to arts and cultural activity in Victoria.

As we celebrate the 25th anniversary of Arts Access, it is timely to reflect on the factors which have made the organisation so successful. Arts Access operates on a strong foundation of respect – respect for the rights of all people to participate fully in the life of the community; respect for the role which art and creativity play in people's lives; respect for the ability of everyone to make a valuable contribution to society through the expression of their aspirations, hopes and ideas.

I am confident that, through adherence to this philosophy and the ongoing commitment of clever and creative people, Arts Access will continue for at least another 25 years.

JANE HALEY
Executive Director

Executive Director Jane Haley after signing the lease on Arts Access' new building at 24 Eastern Road South Melbourne



MC Jeff Blake and SMAC participant Cathy Straughton at International Day of People With A disAbility

ARTISTIC PROGRAM

Twenty five arts projects, more than 300 practical arts workshops, over 600 telephone referrals, 60 artists, more than 300 participants and thousands of audience members, three project coordinators and one Artistic Program Manager... provided the framework for Arts Access' 1998-99 Artistic Program.

The Program remains diverse and includes painting, drawing, drama, graphic design, storytelling, African drumming, sculpture, mosaics, environmental design, pin hole photography, creative dance, improvisational dance, rock'n'roll, woodwork, textiles, multi media, installations, film and video. It has received ongoing review and forward planning to ensure that we achieve our aims and that these are closely aligned with changes and developments in the arts and disability fields.

Arts Access has a strong commitment to the presentation and promotion of the work of people with a disability. This provides opportunities for public recognition and makes a significant contribution to both individual and community understanding and appreciation of the abilities of people with a disability.

Arts Access also has a commitment to actively involve participants in planning processes, where possible, and encourages them to evaluate the projects and their achievements. Participants are also informed about other local community based arts projects and encouraged to pursue these options

Many of the model and pilot projects initiated by the organisation have continued as independent activities beyond the involvement of Arts Access. Recently these include the collaboration with the Queenscliff Lodge Supported Residential Services, the four BreastScreen Victoria projects and Weave Movement Theatre (which grew out of the Moveable Dance Project).

Arts Access is often the first point of call for people seeking information about the arts, disability and disadvantaged sectors. Staff in the Artistic Program responded to more than 600 hundred enquiries from people seeking information about arts projects and artists in their local area, artists seeking employment, and workers in the arts, disability and disadvantaged sectors seeking advice and information. Many new projects occur as a result of the initial support and information provided by Arts Access.

The Hacketts play at Club Wild



Art Day South

The Magic Cat and The Magic Cat's Garden

Participants in the Art Day South project created a performance and installation based on the stories and drawings of the previously created book, *The Magic Cat*. The performance included poetry, songs, vignettes and tableaux narrated by performing artist, Kim Baston, and was accompanied by a musical ensemble of participants and staff. The installation involved the creation of an indoor garden by audience members from local Adult Training Support Services and Art Day West participants. The event was a great success and thoroughly enjoyed by all involved.

Through the Glass

A short video called *Through the Glass* was produced to show case the visual art process and work created by participants from Art Day South. The filming was facilitated by visual artist, Gali Weiss, with an original soundtrack composed and recorded by performing artist, Kim Baston. Blue Rose Vision edited and produced the video which provides a valuable promotional tool for Art Day South and Arts Access.

"I really enjoyed the structure of the class especially the techniques of constructing a painting or drawing as these are the things I have never been taught."

Saturday Morning Art Class participant

"Feel good, feel real glad I'm here."

Art Day participant

Inside Out / Outside In

Art Day South presented their major exhibition featuring thirty-five drawings, pastels and ceramic works at the St Kilda Town Hall. Five works were sold and more than 100 people attended launch and exhibition which was open to the public for six weeks.

Art Prize

In May 1999, Art Day South participants created an award winning installation of recycled found objects and materials for Braeside Park Art Shed. Parks Victoria awarded the work first prize.

"It has helped me re-start drawing and painting again as I had not done any for many years. I have also seen improvement since the first semester I attended."

Saturday Morning Art Class participant

"One of Art Day's greatest strengths is the amazing level of participation due to the supportive positive group atmosphere."

Art Day Staff

"He comes home and talks about the lovely day he has had at Art Day."

Art Day participant's family/caregivers

"I found the class very warm, friendly and very helpful."

Saturday Morning Art Class participant

Art Day West

Good Dancer, Nice Dress

Arts Access was proud to be nominated as a "best practice" model in arts projects for adults with an intellectual disability by the Quality Improvement Reference Committee of the Department of Human Services, Disability Services. Funds were provided to record a video documentary to showcase the project's strategies and outcomes. The video, *Good Dancer, Nice Dress*, included scenes from the 1998 production, *Sweet Revenge*, artwork from the *Dream Boxes* exhibition, and interviews with the staff and participants of Art Day West.

Fun, Friendship, Time Out, Respite

Participants in the Art Day South project were commissioned to design and create the promotional banner for the Western Region Respite Expo in May 1999. The theme was Fun, Friendship, Time Out, Respite and the result was much admired.

Saturday Morning Art Class

This successful program continued for another year, reaching more people by moving the class around to different parts of Melbourne term by term. To showcase and promote the work of SMAC participants, Arts Access produced a stylish calendar and more than 1000 copies were printed and distributed to a range of arts and disability organisations. The calendar was launched and an exhibition of the artwork was held at Arts Access' celebration for International Day of People with a disability at The CUB Malthouse.

"When we took a group of residents from the Ascot Lodge Supported Residential Service to the Puckle Street Art Trail, one resident joined us and he had not been out of the house in twelve months."

Western Region Arts Projects Supported Residential Services

"Self confidence has increased, verbal expression and participation during leisure time in art projects has increased."

Art Day participant's family/caregivers

Art Day West perform Sweet Revenge, as featured in the Good Dancer, Nice Dress video



Members of Weave Movement Theatre



Art Day South participants Valerie Hawkes and John Barnett at Braeside Park Art Shed.

Supported Residential Services

The residents of a number of Supported Residential Services (SRS) had the opportunity to share the results of the skills they had developed and the work they had created in projects coordinated by Arts Access. Exhibitions and performances were presented in the residences and in public spaces including libraries and shop windows. These events make a significant contribution to the sense of pride of the participants and to the community's appreciation of their abilities.

Local Libraries

The work created in the project at Barkly Gardens SRS was exhibited at West Footscray Library in August and was followed by a larger exhibition at Footscray Library in September. The exhibition included work based on stories, books, dreams and memories.



Artist Dominique Azoulay dancing with residents at Picolo Festa, Casa Serena SRS



Puckle Street Art Trail

An exhibition featuring work created by residents living in Ascot Lodge and Buckley Manor SRS was presented in the windows of shops in Puckle Street Moonee Ponds.

Piccola Festa (Little Festival)

As a culmination of the project in Casa Serena SRS the residents presented an afternoon of dance and Italian song for their families and friends.

WestWorld

The residents of the Western Lodge SRS shared their work with residents, family and friends.

Seasational Mystic Mariner

An exhibition featuring artwork created by residents from the Queenscliff Lodge SRS was presented at the Queenscliff Library.

Labyrinth

The ceramic labyrinth created by participants during the collaboration with the Centre for Creative Ministries was completed and launched in the Garden of Healing and Contemplation.

BodySuits

The hugely successful *BodySuits* exhibition completed its national tour with showings in Hobart, Launceston and Perth. This exhibition of contemporary works received much acclaim and demonstrated Arts Access' position as one of the leading arts and disability agencies in Australia. Many of the artists featured in the collection have received commissions, awards and further opportunities as a result of their inclusion in the exhibition.

BreastScreen Victoria

BreastScreen Victoria commissioned and funded Arts Access to develop a community arts project which would provide opportunities for women from diverse cultural backgrounds to explore issues related to health and wellbeing in a non medical environment. Four groups of women (including Chinese and Spanish speaking women and women in regional Victoria) met weekly for 15 weeks and worked with two artists to create individual and collaborative art works. The projects were a tremendous success. A whimsical and thought provoking collection will be exhibited throughout Victoria to raise awareness about breast cancer screening and women's health.

BreastScreen Victoria project, Monash



Artistic Program Manager Ruth Whittingham and Project Coordinator Anne Riggs



The Garden of Healing and Contemplation, Centre for Creative Ministries, Labyrinth project

Rural Health

The Rural Health Unit of the Department of Human Services approached Arts Access to develop a model project which would promote and facilitate community involvement in changes to rural health service delivery in Victoria. The project will be undertaken in three stages: a scoping study, a search conference and a model project. Project Officer, Alex Prior has completed stage one and presented Arts Access with a comprehensive report which details successful arts and health projects, identifies issues and provides advice on strategies for the next stages of the project.

Club Wild

Arts Access has maintained a close working relationship with the Corilong Adult Training-Support Service in Geelong which coordinates the popular and successful Club Wild, a regular public performance event for people with a disability.

OPENArts Access

Arts Access has been working in partnership with OPENChannel (Victoria's premier multimedia resource organisation) towards the development of a digital media arts project for people with a disability – OPENArts Access. This will incorporate training opportunities for professional artists working in the arts and disability sectors and for people with a disability who wish to create and present visual and performing arts online. A survey of more than 250 organisations has identified potential partners and demonstrated a high level of support and interest in the project.



The FadeAways

In late 1997, Mid West Mental Health, Horizons Living Skills and Support Program and Arts Access worked in partnership to provide an opportunity for people with mental health issues to form a rock'n'roll band. Following the initial 12 week project, which included guest artists like the Ross Hannaford Trio, a group of committed musicians continued to meet throughout 1998 and 1999. The group – *The FadeAways* – performed live at many events including Club Wild and the Arts Access' celebration of International Day of People with a disability. Members of the group are now pursuing other music creation and performance opportunities.

Create A Poster Workshop

A one-day visual art workshop for people with mental health issues was held to create entries for the Mental Health Foundation poster competition. Participants were invited to work on individual and collaborative posters. All of the posters entered formed part of the 1999 Mental Health Week Poster Exhibition. Following this exhibition the individual art works will be returned to their creators and the Arts Access collaborative art works will be displayed at Arts Access.

Weave Movement Theatre

A major highlight for Arts Access was the establishment of the new performance group, Weave Movement Theatre. Initiated from the Arts Access Moveable Dance Project, WMT has developed a unique style of improvised creative dance, movement and spoken word. WMT successfully sought charitable trust funding in early 1999 and became financially independent of Arts Access.

Partnerships

Arts Access is a leader in collaborative partnerships. We have initiated and established many successful arts projects with disability, health and community based organisations including BreastScreen Victoria, OPENChannel, Club Wild, the Centre for Creative Ministries, the Salvation Army, the Rural Health Unit of the Department of Human Services, the Horizons Living Skills and Support Program, Mid-West Mental Health and a range of other community based arts and disability organisations.

The FadeAways perform on International Day of People with a disability



Jo Cohen and Barbara Doherty, incoming and outgoing coordinators of Art Day

This year has seen the extension of these partnerships and initiation of new partnerships with other arts organisations. Discussions for future projects include collaborations with the Melbourne Symphony Orchestra, NEAMI Splash Arts Studio, Handspan Visual Theatre and the Melbourne International Festival 2000 and 2001. More diverse and exciting artistic projects point the way ahead.

I would like to thank each and every participant, artist, project coordinator, project worker and partner for their involvement, enthusiasm, passion, commitment and support.

RUTH WHITTINGHAM

Artistic Program Manager



The Snuff Puppets dancing at Club Wild

Detail from The Garden of Healing and Contemplation, Centre for Creative Ministries, Labyrinth project

EASE-ENTERTAINMENT ACCESS SERVICE

The EASE Ticket Service had another busy year, providing information on access and a specialised seating service to those whose choice of seating is restricted by physical and sensory impairment. Due to the ongoing support of companies such as Opera Australia, Melbourne Theatre Company, Melbourne Symphony Orchestra and Playbox, Arts Access was able to offer reduced priced tickets for more than 200 diverse and exciting events throughout Victoria.

Musicals are always a favourite with the EASE members and this year productions included *Les Miserables*, *Phantom of the Opera*, *Chicago*, *Rent*, *Fiddler on the Roof* and *The Merry Widow*. *Showboat* proved to be one of the most successful shows for the year, with EASE contributing more than \$24,000 in ticket sales.

EASE members in regional and suburban areas were also able to attend events at a number of centres including Frankston Cultural Centre, Monash, Whitehorse, Kingston, Darebin Arts and Entertainment Centre, Geelong and Bendigo Performing Arts Centres. Further expansion into regional Victoria is planned for early 2000 and EASE is currently looking for partners in other centres, including Ballarat, Bendigo, Geelong and surrounds.

Audio Description

Audio description is an increasingly popular service, with EASE booking 520 tickets to described events this year. Developed to enable people with a vision impairment to enjoy live theatre independently, the audio description is provided by a dedicated and well-trained group of volunteers lead by Marjory West from the Vision Australia Foundation.

It is great to see that more companies are offering audio described events, the Melbourne Theatre Company leading the way, providing described performances for all of their productions. Other described performances presented this year were *Les Miserables*, *Fiddler on the Roof*, *Showboat*, *A Funny Thing Happened On The Way to the Forum*, *Rent* and *The Merry Widow*. *Gone With The Wind*, presented at the Regent Theatre was a great success as our first audio described film.

Melbourne Theatre Company's
Twelfth Night (Photo: Jeff Busby)



The Victorian Arts Centre



First Impressions – The Australian Ballet

The First Impressions program is a collaboration between EASE and The Australian Ballet, introducing disadvantaged youth to the art of dance. Throughout the year, EASE invited 700 children to take part in education programs and to attend full performances from The Australian Ballet's season. This program, in operation since 1996, provides a rare opportunity for children with a disability and once again it has been a joy to see the State Theatre filled with beaming faces, for many of whom this is their first theatrical experience.

Members

Our current membership of approximately 500 includes a broad range of people including those with physical, sensory, intellectual and psychiatric disabilities as well as people with a life threatening illnesses, learning difficulties or from non-English speaking backgrounds. We also reach people who are homeless, in rehabilitation and people in need of support due to domestic violence or substance abuse. Some of the organisations regularly using the EASE Ticket Service include: the Vision Australia Foundation, the Salvation Army, Good Shepherd Youth and Family Services, Interchange, Challenge Cancer Support, MS Society of Victoria, Department of Human Services, Western Hospital, Victorian Offenders Support Agency, and the Spastic Society.

EASE Ticket Update

EASE's monthly publication, the Ticket Update, continues to be produced in a number of formats, including large print, audiotope and via email. We will be introducing a braille version of the Update, along with a new format and professional design from September 1999.

Producing the Update in multiple formats ensures that all of our members have access to information on arts and entertainment events and venue access and facilities and provides the arts industry with a way of promoting events to a broader sector of the community.

Membership Card

A membership card will be issued to all EASE members from September 1999, enabling us to develop many new partnerships and offer discounts at a broader range of venues, including museums, galleries, tourist attractions and parks and at general admission events such as festivals and concerts.

"Melbourne Theatre Company is delighted to be associated with EASE. The relationship between MTC and EASE has thrived over the past twelve years. Over that time EASE has sold literally thousands of tickets to MTC productions. MTC welcomes people with a disability to all performances and sincerely values the support of EASE."

Penny Griggs Melbourne Theatre Company.

The card offers members a wider choice of purchase options and encourages independence, with EASE tickets available directly from many venues. We are also introducing the option of mail order bookings and upfront payment, eliminating the delays involved with invoicing and reducing the number of phone calls received.

APACA

In August Arts Access was invited to host daily discussions on disability awareness at the Australasian Performing Arts Centres Association Conference in Geelong. Conference delegates participated in discussions and debates covering many disability issues - carer entry, venue access and the Disability Discrimination Act.

BOMA

A presentation about EASE was made at a meeting of the Box Office Managers Association, also held in Geelong. This proved to be a terrific opportunity to promote the Service and to discuss disability issues affecting ticketing staff throughout Victoria.

VMA

The annual Venue Managers Association Conference and Trade Show was held in Brisbane in April. This provided the opportunity to meet with venue managers, ticket agencies and promoters and to raise the profile of EASE within the industry. Attendance at the Conference resulted in the development of some valuable new partnerships for EASE.

Venue Access Information

Working in partnership with venues and promoters, Arts Access has continued to promote excellence in venue access and best practice in providing facilities for and service to people with a disability. *The Vic Venue Guide* (launched in 1997) is now available online through the Arts Access web site. Information on access and facilities at Victorian venues is also available through the EASE office by phone, fax and email.

EASE Partners

EASE supports the entertainment industry in Victoria by encouraging audience development, helping to ensure that the audience is as diverse as the works being produced. Thanks to the following venues, companies and promoters for their support of the Service over the past year.

The Australian Ballet's First Impressions Project



IMAX Theatre, Crown Entertainment Complex, National Trust, Hoyts, Palace, Darebin Arts and Entertainment Centre, Picture This, Feld Entertainment, Opera Australia, Australian Chamber Orchestra, Australian Pops Orchestra, Melbourne Theatre Company, Playbox, The CUB Malthouse, Frankston Cultural Centre, Geelong Performing Arts Centre, Whitehorse Performing Arts Centre, Athenaeum Theatre, Melbourne Symphony Orchestra, Chunky Move, Circus Oz, Bangarra Dance, Melbourne Festival, Comedy Festival, Cameron MacIntosh, Marriner Productions, Essgee Entertainment, Victorian Arts Centre, Regent Theatre, Princess Theatre, Bell Shakespeare, International Management Group, International Touring Company, Tennis Australia, Melbourne Olympic Parks, The Production Company, The Australian Ballet, Flying Fruit Fly Circus, International Piano Festival, Geminiani Orchestra, Sidney Myer Music Bowl, Sandy Beach Centre, Melbourne International Flower and Garden Show, Melbourne Tigers, Melbourne Magic, Ticketek, Ticketmaster, Garry Ginivan Attractions, St Martins, Showbiz, Jacobsen Entertainment, Australian Events Marketing, Victorian Cricket Association, Monash / Alexandra Theatre, Gasworks, Fred Wallace, Avery Events, Oxford Children's Theatre, The Universal Theatre, Mollison, The Concert Corporation.

With 1350 free tickets distributed and over 14,000 tickets sold through the Service this year, it is clear that EASE continues to provide a valued benefit to the many people who take advantage of the broad range of events offered. Thanks to everyone at Arts Access who helped with the large number of calls for information and bookings each day and the running of the Service, particularly Penelope Stewart and Sharyn Dawson.

FIONA HANRAHAN

EASE Manager



Playbox Theatre Company's *Twelfth Night*



Fiona Hanrahan with Rachel Wolmsley, EASE Member at an audio described performance of *Show Boat*

TRAINING AND PROFESSIONAL DEVELOPMENT

Disability Awareness Seminars, Arts Victoria



Marketing the Arts to People With A Disability seminar, Hamilton

"The face to face experience with the artists with a disability was useful and enlightening. Excellent presentation with a well structured day and the gradual building of knowledge and understanding of issues. Good level of interaction."

Arts Victoria Seminars

"I am now less likely to make assumptions about what people require for access. It certainly dispelled some myths for me."

Disability Awareness Seminars

"Excellent, concise presentation. I now feel confident about working with my committee on developing marketing strategies for 2000."

Marketing the Arts to People with a Disability

"I have moved to a full time position within the event management industry. The attainment of this position was directly related to the completion of this course"

Creative Arts Program and Events Management

"The experience of choosing from the suitcase and not feeling very comfortable about it made me realise that it is good to put myself in my clients' shoes."

Intellectual Disability and Creative Arts Programs

This has been a huge and very exciting year with the largest range and number of programs ever delivered by Arts Access since it commenced training programs in 1988. Arts Access became a Registered Provider of Vocational Education and Training in Victoria five years ago. The formal registration endorses our reputation and track record in the conduct of industry training of the highest standard.

In 1998-99 Arts Access conducted eight training and professional development programs delivering more than 340 hours of "student" contact, of which 230 were for accredited courses. This represents an increase of more than 100 hours. Almost 5,000 organisations were targeted including

- arts industry – professional arts organisations and companies including performing arts centres, theatre and dance companies, galleries and museums, arts councils and individual artists
- community services sector – mental health services, special schools, welfare organisations, intellectual disability services, older adult services, community health centres, physical and sensory disability services, local government departments of disability/aged services and culture and leisure, tertiary institutions, youth and Centrelink services.

All participants received a certificate of attainment on completion of the training program. In the case of accredited courses participants received appropriate acknowledgment of qualification. All programs were comprehensive, practical, industry based and facilitated by practising industry professionals.

Disability Awareness Seminar

A core of Arts Access Training and Professional Development Program is the Disability Awareness Seminar. The organisation's expertise was acknowledged by way of an invitation to deliver a series of seminars to Arts Victoria's staff. The response from participants was notable – many realising for the first time the challenges and barriers facing people with a disability in their effort to participate on an equal basis in arts and cultural activity.

The Disability Awareness Seminar comprises an intensive day of discussion, practical activities and working group sessions where participants acquire knowledge of a range of disabilities and the associated particular needs; the Disability Discrimination Act; access issues; and strategies to improve access in venues, programs and customer services.

The highlight of the seminar is often the panel of speakers and disability simulation activities. In recounting their positive and negative experiences as consumers of arts and entertainment events, programs and venues, the panelists personalise access barriers. This session, along with the wheelchair and blindfold activities, gives participants a profound insight into access issues and ways to improve the quality of cultural services for people with a disability. Presenters included Jedda Bellerjee and Dean Michael. Panelists included Jan Doran, Jane Trengove, Rick Rankine and Julie Elliot.

Marketing the Arts to People With A Disability

Arts Access was delighted to be commissioned by Arts Victoria and the Australia Council to develop a series of seminars on Marketing the Arts to People with a Disability. Designed to complement the Australia Council publication, *Access All Areas*, the half-day seminar was presented in Melbourne and regional centres in Victoria (Sale, Hamilton, Horsham and Bendigo) and attracted participants from the arts and community services sectors keen to learn how to effectively reach new audiences and clients.

Participants were given a general overview of disability and the associated requirements for access. They applied this knowledge to the specifics of their workplace and, in groups, developed practical marketing strategies to improve access for audiences and clients with a disability. The seminars were extremely well received and well attended. The presenters were Jedda Bellerjee and Caroline Cowley.

Diploma of Arts – Small Companies and Community Theatre

Other training programs delivered included modules from the Diploma of Arts – Small Companies and Community Theatre. These accredited courses are popular with professionals already working in the arts industry and the community services sector as they are part time, practical and industry focused. In addition, the course notes and other resources are very comprehensive.

Marketing, Publicising and Promoting Creative Arts Events and Programs

With a focus on people with a disability and people who are disadvantaged, this was an intensive course covering development of a marketing plan, implementation of marketing and promotional strategies, effective media campaigns, disability awareness, access issues and response strategies. Presenters included Fiona Macleod, Jane Heppenstall, Robyn Golder, Di-Arne Carr, Dianna Wells, Kevin Whyte and Jedda Bellerjee.

Creative Arts Programming and Events Management

This was a very intensive part-time course run over a 20-week period covering knowledge and skills in the planning, development and management of arts events and programs, resourcing and networking, funding and sponsorship, community cultural development and creative arts practice. Presenters included Paul Harrison, Jane Kent, Barbara Doherty, Jenny Stokes, Jane Heppenstall and Jedda Bellerjee.

Arts Practice Program

The Arts Practice Program comprises a series of two-day workshops with a predominantly practical focus. Unique, stimulating and professionally revitalising, they were immensely popular and offered opportunities to network, share ideas and expertise, develop skills and discuss current industry issues. It is fantastic to witness the enjoyment and charged creative atmosphere as participants engage in the tasks at hand.

Intellectual Disability and Creative Arts Programs

A new initiative in 1998, this course explored creative arts processes and activities that have been proven to work with this group and best practice principles in the planning and management of arts programs. Presenters were Barbara Doherty, Lyndsay Mason and Claire Teisen.

"Good teaching methods with a mix of resources and class notes-overheads, oral and written tasks."

Marketing, Promoting and Publicising Creative Arts Events and Programs

"Good hands on sessions with lots of exciting applications and a tutor who was prepared to tell everything."

Mosaics and Creative Tiling

"Great to learn by doing things rather than just being passive listeners."

Your Words, My Words, Our Words

Mosaics and Creative Tiling workshop



Your Words, My Words, Our Words

This was a very rich and exciting two days, as participants gained an insight into the various formats and styles of written expression. They explored a range of writing processes and activities to activate their own creative writing skills as well as those of their client group. Presenters were Faye White, Jutta Goetze and Catherine Bateson.

Mosaics and Creative Tiling

This program truly inspired and expanded creative and practical approaches to mosaics and tiling. Participants explored the application of mosaics for use in a variety of indoor and outdoor settings and collaborated in the creation of some large group works. The presenter was Libby McKinnon.

JEDDA BELLERJEE

Training and Professional Development Manager

PUBLIC RELATIONS

It has been fantastic to join Arts Access at such an auspicious time—the 25th anniversary of the organisation. From a promotional point of view, this has provided a great opportunity to shine the spotlight on the work of Arts Access and acknowledge that, at 25 years of age, it is one of Victoria's oldest and most successful arts organisations.

As a 'hybrid' organisation, operating in both the arts and disability sectors, it can sometimes be hard for Arts Access to know exactly where to position itself. As with most public relations problems, this is viewed as an opportunity — we have double the networks and twice the potential audience. It also means that we can satisfy more needs and be more versatile in defining our work.

The most obvious achievement in Public Relations has been the completion of the new logo and its application on all Arts Access communications. It was important to settle on an image that conveyed the impression of our core business — art — and we hope that people will recognise this in the 'brush stroke' that is the defining feature of the logo.

The objective of developing a new logo and image for Arts Access was to reposition ourselves, via the image we project externally, as a peak arts body and to promote a more contemporary impression. Our image is but one part of this transition — quality delivery of a diverse program in order to fulfill the reputation we set for ourselves is a vital part. Our new image also helps conduct more professional external communications, important when attracting potential business partners and sponsors.

Arts Access News

Arts Access News has been published quarterly and has not only proved to be a great vehicle by which members and associates can stay connected with the organisation and each other, but also a good incentive for new members. Arts Access News is circulated to almost 1000 organisations and individuals, mainly in Victoria, but also nationally. Our readership includes artists and people working in the arts and disability sectors. Information in the newsletter is mostly about the work Arts Access is doing, but we can nearly always find space for the coverage of relevant items submitted by peer organisations, in this way broadening the communication loop.

Weave Movement Theatre perform at International Day of People With A disAbility, Bourke Street Mall



Verve!

To be presented by Arts Access in October 1999, *Verve!* the national symposium on arts and disability deserves a mention as the major event celebrating the 25th anniversary. *Verve!* provides a forum for the discussion of many pertinent issues relating to those practising in the arts and disability arena. A committee comprising Arts Access staff and other arts and disability professionals has met throughout the year to complete planning and preparation.

Events

Arts Access events usually attract a passionate and eclectic mix of people from many different community streams. On International Day of People with a disAbility, which is acknowledged worldwide on 3 December, more than 100 people gathered in The CUB Malthouse's Merlin Theatre to launch a calendar of artworks created by the participants in Arts Access' Saturday Morning Art Class. The artworks featured in the calendar were exhibited and all sold on the day. Special thanks go to celebrity guest Raymond J. Bartholomeuz who dedicated a specially written poem to Arts Access and delivered it in his unique style and MC Jeff Blake. The FadeAways and Jo Jo the Clown provided entertainment.

On this day, Arts Access also took part in a program of events held in Bourke St Mall, coordinated by a committee of disability organisations, which gained enormous exposure to the lunchtime city crowd. This laid the foundation for a bigger and better event in 1999 which will offer a nighttime music event and an extensive publicity campaign.



Jo Jo the Clown (left) at International Day of People With A disAbility

Digital Communication

Digital technologies, particularly those which aid communication, represent a significant breakthrough for people with a disability and can often deliver new independence for the user. The Internet is an invaluable means of broadcasting information about the services of Arts Access and providing a key communication channel between the organisation and all its audiences — peer industry organisations, artists, participants, partners and sponsors.

The development of our website has been identified as a top priority. Plans are underway to create a brand new site as a model of internet accessibility in consultation with professional internet personnel. Email has already become a major tool for communication between Arts Access and its many audiences, particularly EASE members, and substantially improves direct marketing opportunities.

Promotions

Throughout the year there have been plenty of opportunities to work alongside the program managers on individual projects — with artistic program staff overseeing the design and production of promotional materials and coordinating publicity; and with the EASE Manager, developing and implementing the new look of EASE, achieving media coverage for a number of EASE events and contributing to the restructuring of the Ticket Service which, with its vital links with the arts and entertainment industry, is often thought of as the most marketable part of Arts Access.

Marketing

In April Arts Access delivered a seminar entitled Marketing the Arts to People with a Disability around Victoria. This was an excellent opportunity to promote Arts Access to people in regional Victoria, who qualify as a significant audience for our programs. We were pleased to discover that disability awareness is high in the regional arts arena. The radio coverage of the tour helped generate considerable interest in arts and disability. Although we did place some advertising throughout the year in training and other programs, Arts Access relies mainly on publicity for the promotion of its activities. A part of this challenge has been encouraging the media to recognise the size of the market and to consider articles on arts and disability as relevant news items.

Fundraising

Towards the end of the financial year, a small fundraising campaign was coordinated, targeting present and past associates and members. Arts Access has a well established tradition of fundraising, evidenced by the establishment of the Arts Access Trust in 1992. Judging by the response to our campaign, this tradition is continuing and we thank all those who donated to Arts Access at this time. Your contribution is highly valued by the organisation.

It has been a wonderful year and I would especially like to thank the Arts Access staff for providing such a wonderfully creative and inspiring environment in which to work.

CAROLINE COWLEY

Public Relations Manager

Raymond J Bartholomeuz performs a poem dedicated to Arts Access



Saturday Morning Art Class participants unveil the 1999 calendar



Arts Access News

Caroline Cowley (PR Manager) with sign interpreter

DADAA

Arts Access is a key member of the national network Disability in the Arts, Disadvantage in the Arts Australia (DADAA). In partnership with the Australia Council, DADAA actively works to promote the inclusion of people with a disability and people who are disadvantaged in arts and cultural activity throughout Australia.

In 1998-99 the Executive Director of Arts Access has made a significant contribution through her responsibility for the strategic planning and development objectives of DADAA. The organisation has become incorporated and established its constitution, membership and operational procedures.

A new National Coordinator, Carey Lai (a former Arts Access team member) was appointed. A program of activity which aims to deliver a higher profile for the achievements in the arts of people with a disability has been instigated—this includes a national project to document 'case studies' and investigation of the potential for digital media to enhance communication.

In early 1999, Val Sheill (DADA AWA), Carey and Jane Haley met with the Hon Peter McGauran, Federal Minister for the Arts and the Centenary of Federation. This led to an invitation to make a presentation to the Ministers of Health and Family and Community Services. Whilst sympathetic to the notion that providing public funds for arts and cultural activity will reduce the demand on public health and welfare services, it was clear that empirical evidence needs to be gathered to prove this point. DADAA is pursuing a relationship with LaTrobe University to assist in a research project.

Members of DADAA (L-R) Jane Haley (Arts Access), Neal Price (Access Arts QLD), Val Sheill (DADA AWA), Helen Connors (Accessible Arts NSW), Lois Selby (DADA ACT), Carey Lai (DADAA National), Tim Thorne (Arts'R'Access, Tas) Penny Eames (Arts Access Aotearoa NZ)



DADAA has entered into partnership with the Sydney Paralympic Organising Committee (SPOC), in particular to develop a program of cultural activity for the 2000 Paralympic Games. Arts Access was invited to submit a proposal for inclusion in the program and has provided advice on venue access and customer service training programs.

An important element of the DADAA national network is the encouragement provided to states and territories where the formal support for arts and disability practice is limited. In 1998, Jane Haley visited Tasmania to address a public meeting called with the intention of setting up a peak arts and disability organisation. Arts'R'Access has been established as a statewide body for information exchange, lobbying and policy development in the arts and disability field and is hoping to coordinate projects in the near future.

JANE HALEY

DADAA National Network Board Member

BOARD, STAFF AND VOLUNTEERS

Arts Access staff and associates

Back row (L-R) Mario Agostinoni, Grant McKenzie, Caroline Cowley, Ruth Whittingham, Mark Healy
Front row (L-R) Rachel Devine, Jane Haley, Sharyn Dawson, Fiona Hanrahan, Jedda Bellerjee, Kieran Hanrahan



Staff and Volunteers

Jane Haley	Executive Director	Fiona Hanrahan	EASE Manager
Mario Agostinoni	Administrator	Dean Michael	Special Projects Manager (until Feb 99)
Jedda Bellerjee	Training and Professional Development Manager	Anne Riggs	Artistic Project Coordinator
Bridget Butler	Training and Professional Development Assistant (until Dec 98)	Penelope Stewart	Casual - EASE Ticket Service
Jo Cohen	BreastScreen Coordinator and Art Day Coordinator (from Feb 99)	Ruth Whittingham	Artistic Program Manager
Caroline Cowley	PR Manager	Martin Wurt	Library and Information Manager (until Feb 99)
Ali Dart	Administration Assistant (until Dec 98)	Volunteers	John Pidd
Barbara Doherty	Art Day Coordinator (until Jan 99)	Students on placement	Christine Rutter
Sharyn Dawson	Administration Assistant (from February 99)		Nadrasca ATSS
Rachel Devine	Office Manager (from Dec 98)		Kieran Hanrahan
			Melissa Iddles
			Ana Tuckerman

Board

The Board of Arts Access is a group of nine individuals who collectively bring an impressive range of skills to the governance of the organisation. They are nominated for the professional skills and personal qualities they offer, including knowledge of arts, health, strategic management, marketing, disability awareness, education, finance and law.

ALLAN MOOR Chair

Director, Performance Improvement Conferences and Seminars, a national training company specialising in human resource and information management. Has a background in adult education, publishing and local government.

ROBIN CHARLWOOD Deputy Chair

Executive Director, National Heart Foundation (Victorian Division). Accredited practising dietitian with professional experience in clinical nutrition at Royal Melbourne Hospital, Deakin University's Department of Human Nutrition and the Heart Foundation.

COLIN PIDD Deputy Chair

Director, Iles-Pidd Consulting. Has a background in industrial psychology, administration, business law and adult learning; practises in area of 'whole system change', providing consultancy and training services to corporate clients in Australia and overseas. Award winning broadcaster who created ABC series Managing Matters and The Business Report.

JO RAPHAEL

Lecturer in Drama Education, Deakin University. Arts educator with expertise in arts and disability; formerly artist-in-residence with Arts Access project at Kew Cottages.

MARK ROBINSON

Marketing Manager, W.I.S.E. Employment Service, a company which specialises in placing people with a disability. Extensive experience in business development and management, staff training and counselling, industrial relations and industrial Award interpretation.

ANDREW SANDERSON

Director, Morris Walker Disability Management. Has technical experience in development, modification, implementation of design recommendations and access programs for people with a disability in both private and commercial sectors.

CECILE TANGE Treasurer

Finance Director, Melbourne Theatre Company. Background in commerce, previously worked with Ernst and Young and Bank of America.

SANDRA TAYLOR-BOWMAN

Marketing Director, Invetech. Formerly Business Development Director, KPMG Management Consulting Asia Pacific and Sales Executive for Argyle Diamonds.

JANE TRENGOVE

Professional artist who has worked in various capacities with Arts Access since early 1980s; curated Arts Access' Body Suits exhibition of contemporary visual art works which toured nationally in 1997-98.

Members of Nadrasca ATSS help with Arts Access mailouts

ARTISTIC PROGRAM CREDITS

Art Day South

Venue	Dingley Village Neighbourhood Centre
Length of Project	6 hours x 46 weeks
Target Group	adults with an intellectual disability
Number of Participants	28
Art Form	visual and performing arts
Artists	Kim Baston, performing arts; Jan Palethorpe, visual arts 1999; Gali Weiss, visual arts 1998
Guest Artists	Dominique Azoulay October 1998; Ian Pidd, performing arts 1999; Leonie Richardson-November 1998
Support Workers	Rob Bekker; Larni Bishop 1999; Rick Doyer; Shannon Foster 1999; Fran Kelson 1998; Jan Palethorpe 1998
Project Coordinator	Barbara Doherty 1998; Jo Cohen 1999
Acknowledgements	Anne Riggs, Art Shed, Braeside Park; Kirsten Mitchell, Dingley Infolink Coordinator, City of Kingston; City of Port Phillip

Art Day West

Venue	South Kingsville Community Centre
Length of Project	6 hours x 46 weeks
Target Group	adults with an intellectual disability
Number of Participants	28
Art Form	visual and performing arts
Artists	Lyndsay Mason, visual arts; Claire Teisen, performing arts
Guest Artists	The Bi Polar Bears
Support Workers	Dee Buman; David Holmes Feb-Jun 1999; Eva Marks; Kitty Owens
Volunteer	Kate Sulan
Project Coordinator	Barbara Doherty 1998; Jo Cohen 1999
Acknowledgements	Janet Keily, Carer Links West (Western Region Respite Expo)

BreastScreen Thomastown

Venue	Peter Batchelor's office, Thomastown
Length of Project	2 hours x 16 weeks
Target Group	older women
Number of Participants	15
Art Form	visual arts
Artists	Eve Glenn; Jane Trengove
Project Coordinator	Jo Cohen
Acknowledgements	Peter Batchelor MP and office staff

BreastScreen Box Hill

Venue	Clota Cottage, Box Hill
Length of Project	2 hours x 16 weeks
Target Group	older women
Number of Participants	15
Art Form	visual arts
Artists	Prudence Flint; Christine Mooney
Project Coordinator	Jo Cohen
Acknowledgements	Trudy Bunton, Clota Cottage, Box Hill

Mosaics and Creative Tiling workshop



BreastScreen Bendigo

Venue	Bendigo Regional Arts Centre
Length of Project	2 hours x 16 weeks
Target Group	older women
Number of Participants	15
Art Form	visual arts
Artists	Frances Guerin; Diedre Outhred
Project Coordinator	Jo Cohen
Acknowledgements	Lynda Newton, City of Greater Bendigo

BreastScreen Bentleigh

Venue	Moongala Women's Community House
Length of Project	2 hours x 16 weeks
Target Group	older women
Number of Participants	15
Art Form	visual arts
Artists	Lisa Mitchell; Gali Weiss
Project Coordinator	Jo Cohen
Acknowledgements	Julie Walker, Moongala Women's Community House



Artwork from Saturday Morning Art Class Term 2

The FadeAways

Venue	Errington Community Centre, St Albans
Length of Project	Feb-June: 2 hours x once per month; Feb-April: 2 hours x 8 weeks
Target Group	adults with mental health issues
Art Form	rock & roll
Artists	David Holmes; Peter Lawler
Acknowledgements	Trish Reck, Bronte Allen, Mid West Mental Health; Peter McKenzie, Horizons Living Skills and Support Program

Saturday Morning Art Class – Term 1 1999

Venue	Kingston Arts Centre, Moorabbin
Length of Project	2 hours x 8 weeks
Target Group	adults with mental health issues
Art Form	visual arts
Number of Participants	12
Artist	Kate Gifford
Support Worker	Dianne Burton
Project Coordinator	Anne Riggs

Saturday Morning Art Class – Term 2 1999

Venue	Footscray Community Arts Centre
Length of Project	2 hours x 8 weeks
Target Group	adults with mental health issues
Art Form	visual arts
Number of Participants	12
Artist	Lynden Robbitt
Support Worker	Karen Thompson
Project Coordinator	Anne Riggs

Saturday Morning Art Class – Term 3 1998

Venue	Harry Atkinson Community Arts Centre, Coburg
Length of Project	2 hours x 8 weeks
Target Group	adults with mental health issues
Number of Participants	12
Art Form	visual arts
Artist	Claire Humphrys-Hunt
Support Worker	Robert McKeown
Project Coordinator	Anne Riggs

Saturday Morning Art Class – Term 4 1998

Venue	Waverley Community Learning Centre, Mt Waverley
Length of Project	2 hours x 8 weeks
Target Group	adults with mental health issues
Art Form	visual arts
Number of Participants	12
Artist	Gali Weiss
Support Worker	Dianne Burton
Project Coordinator	Anne Riggs

Saturday Morning Art Class Calendar

Target Group	adults with mental health issues who had participated in the Saturday Morning Art Classes
Art Form	visual arts
Project Coordinator	Anne Riggs
Design	FHA Image Design

Supported Residential Services (SRS) Western Region Arts Projects 1998

Venue	Ascot Lodge SRS
Length of Project	2 hours x 20 weeks
Target Group	SRS residents
Art Form	visual arts
Number of Participants	12
Artist	Prudence Flint
Project Coordinator	Anne Riggs

Supported Residential Services (SRS) Western Region Arts Projects 1998

Venue	Barkly Gardens SRS
Length of Project	2 hours x 20 weeks
Target Group	SRS residents
Art Form	visual arts
Number of Participants	12
Artist	Louise Hall
Project Coordinator	Anne Riggs

Supported Residential Services (SRS) Western Region Arts Projects 1998

Venue	Buckley Manor SRS
Length of Project	2 hours x 20 weeks
Target Group	SRS residents
Art Form	visual arts
Number of Participants	12
Artist	Sian Adnam
Project Coordinator	Anne Riggs

Supported Residential Services (SRS) Western Region Arts Projects 1999

Venue	Western Lodge SRS
Length of Project	2 hours x 16 weeks
Target Group	SRS residents
Art Form	visual and performing arts
Number of Participants	12
Artists	Kim Baston, performing arts; James Cattell, visual arts
Project Coordinator	Anne Riggs



**Supported Residential Services (SRS)
Western Region Arts Projects 1999**

Venue	Casa Serena SRS
Length of Project	2 hours x 16 weeks
Target Group	SRS residents
Art Form	creative dance
Number of Participants	12
Artist	Dominique Azoulay
Project Coordinator	Anne Riggs

OPENArts Access

Research Coordinator	Alex Prior March-April 1999
Acknowledgements	Helen Bowman-OPENChannel
Project Coordinator	Ruth Whittingham

**Mental Health Week-
Create A Poster Workshop**

Venue	Arts Access Studio
Date	May 1999
Number of Participants	12
Number of posters submitted	17
Project Coordinator	Anne Riggs

Club Wild – presented by The Big Bag Band in collaboration with
Community Music Victoria and Arts Access

Dates	19 July 1998, Lower Melbourne Town Hall 1 November 1998, North Melbourne Town Hall 25 April 1999, North Melbourne Town Hall
Project Liaison	Ruth Whittingham
Number of Participants	100-200 per Club Wild

Queenscliff Lodge

Artist	Lynden Bobbitt
Volunteer	Lauren Leviston
Acknowledgements	Dianne Schmidtke, Kardinia Centre Salvation Army Community Access Program; Bellarine Peninsula Community Health Services Inc.; Barwon Disability Resource Council-Disability Support Fund Queenscliff Library; Queenscliff Lodge
Project Coordinator	Ruth Whittingham

BodySuits

Artists	Ross Barber, Ed Burton, Cecilia Clarke, Colin Duncan, Mikala Dwyer, Ruark Lewis, Susan Norrie, Bronwyn Platten, Jane Trengove
Tour Destinations	July-December 98 Experimental Art Foundation, Adelaide; Plimsoll, Hobart and University Gallery, Launceston; Perth Institute of Contemporary Art
Project Curator	Jane Trengove

OHS HACC Project Management Art Exhibition

Venue	Bellarine Room, Melbourne Convention Centre
Dates	April 1999
Curator	Anne Riggs
Assistant	Janet Inglis
Project Coordinator	Ruth Whittingham

Department of Rural Health

Project Officer	Alex Prior, December 1998-March 1999
Project Coordinator	Ruth Whittingham

Weave Movement Theatre

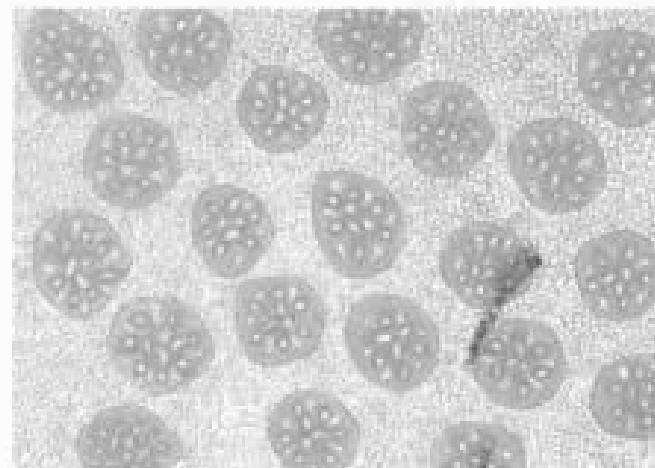
Venue	Victorian College of the Arts-School of Drama
Length of Project	ongoing
Art Form	improvised dance
Number of Participants	12
Artists	Peter Trotman-1998; Nick Pappas-1999
Project Coordinator	Ruth Whittingham
Acknowledgements	Janice Florence

OPEN Arts Access

Project Coordinator	Ruth Whittingham
Project Officer	Alex Prior, March-April 1999



BreastScreen Victoria project, Box Hill



Artwork from Saturday Morning Art Class, term 2

FINANCIAL STATEMENT

Statement by Members of the Committee

In the opinion of the Committee of Arts Access Society Incorporated:

- the financial statements and notes represent fairly the financial position of Arts Access Society Incorporated as at 30 June 1999 and its performance, as represented by the results of its operations, for the year ended on that date; and
- there are reasonable grounds to believe that Arts Access Society Incorporated will be able to pay its debts as and when they become due and payable.

Signed in accordance with a resolution of the Committee and signed before and on behalf of the Committee by:

President

23 November 1999
Dated

Treasurer

23 November 1999
Dated

Profit and Loss Account

	Note	30 June 1999	30 June 1998
		\$	\$
Operating revenue	4	641,689	440,677
Operating surplus / (deficit)	5	(26,775)	22,062
Income tax attributable to operating surplus / (deficit)			
Operating surplus / (deficit) after income tax		(26,775)	22,062
Accumulated surplus at the beginning of the financial year		106,041	83,979
Accumulated surplus at the end of the financial year		79,266	106,041

The income and expense summary is to be read
in conjunction with the Notes to the
Financial Statements.

Balance Sheet

	Note	30 June 1999	30 June 1998
		\$	\$
Current assets			
Cash	6	244,835	263,352
Accounts receivable	7	18,208	15,976
Inventory	8	5,806	3,207
Prepayments	9	1,103	4,237
Other			4,789
<i>Total current assets</i>		<u>269,952</u>	<u>291,561</u>
Non-current assets			
Property, plant and equipment	10	<u>28,202</u>	<u>88,956</u>
<i>Total non-current assets</i>		<u>28,202</u>	<u>88,956</u>
Total assets		<u>298,154</u>	<u>380,517</u>
Current liabilities			
Accounts payable		9,921	42,775
Payroll liabilities	11	10,966	11,371
Provisions	12	15,057	39,959
Income in advance		178,644	157,385
Other		4,300	22,986
<i>Total current liabilities</i>		<u>218,888</u>	<u>274,476</u>
Total liabilities		<u>218,888</u>	<u>274,476</u>
Net assets		<u>79,266</u>	<u>106,041</u>
Members funds			
Accumulated surplus brought forward		106,041	83,979
Surplus / (deficit) this year		<u>(26,775)</u>	<u>22,062</u>
Total members funds		<u>79,266</u>	<u>106,041</u>

The Balance Sheet is to be read in conjunction with the Notes to the Financial Statements.

Notes to the Financial Statements

1. Summary of significant accounting policies

The significant policies which have been adopted in the preparation of this financial report are:

(a) Basis of preparation

The financial report is a special purpose financial report which has been prepared specifically to satisfy the financial reporting requirements of the members of Arts Access Society Incorporated (the Society).

The Committee has determined that the Society is not a reporting entity as defined in Statement of Accounting Concepts 1 : Definition of the Reporting Entity. The financial report has been prepared in accordance with all applicable accounting standards and other mandatory professional reporting requirements, as deemed necessary by the Committee, with the exception of the following:

- AAS 28 Statement of Cash Flows
- AAS 22 Related Party Disclosures; and
- AAS 33 Presentation and Disclosure of Financial Instruments

The financial report has been prepared on the basis of historical costs and, except where stated, does not take into account changing money values or current valuations of non-current assets.

These accounting policies have been consistently applied and, except where there is a change in accounting policy, are consistent with those of the previous year.

(b) Income tax

The Society holds an exemption and is therefore not liable to pay income tax on any surplus that accrues.

(c) Provision for doubtful debts

The collectibility of debts is assessed at balance date and specific provision is made for any doubtful accounts.

(d) Property, plant and equipment

Items of property, plant and equipment are initially recorded at cost and depreciated over their estimated useful lives using the straight line method.

The carrying amount of fixed assets is reviewed annually by the Committee to ensure it is not in excess of the recoverable amount of the assets.

Leasehold improvements are amortised over the shorter of either the unexpired period of the lease or the estimated useful life of the improvement.

(e) Income in advance—moneys held for specific purposes

Unexpended grant or trust income in respect of specific projects and activities is treated as deferred income (a liability) at balance date to enable matching with related expenditure in subsequent financial years.

(f) Employee entitlements

Wages, salaries and annual leave

The provisions for employee entitlements to wages, salaries and annual leave represents the amounts which the Society has a present obligation to pay resulting from employees' services provided up to balance date. The provisions have been calculated at nominal amounts based on current wage and salary rates and includes related on-costs.

2. Previous year comparatives

During the prior year the balance date of the Society was changed from 31 December to 30 June. Therefore, the prior period comparative is for the six months ended 30 June 1998.

3. Segment information

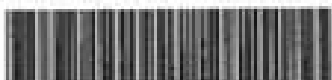
The Society operates in the arts sector whereby it facilitates opportunities for people with disabilities to participate in the cultural and artistic life of the community within Australia.

	30 June 1999	30 June 1998
	\$	\$
4. Revenue		
Revenue from operating activities		
Grants		
Department of Human Services	184,891	209,853
Arts Victoria	75,000	65,500
OTFE		6,610
Australia Council	46,106	25,002
Department of Communication and Arts		10,926
Other	32,659	10,553
Fees	105,485	16,694
EASE	172,912	65,231
Interest	<u>8,325</u>	<u>4,761</u>

5. Operating profit

Operating surplus / (deficit) before income tax has been arrived at after charging / (crediting) the following items:

Operating lease rentals	2,624	1,002
Net expense for movement in provision for Employee entitlements	5,339	10,671
Doubtful trade debts		
Depreciation of property, plant and equipment	9,582	11,116
Bad debts written off to the profit and loss account	<u>5,190</u>	<u>1,196</u>



3 0328 10563496 7

State Library of Victoria

	30 June 1999	30 June 1998		12 months to 30 June 1999	6 months to 30 June 1998
	\$	\$			
6. Cash			10. Property, plant and equipment		
Cash on hand	164	6,091	Leasehold improvements at cost	96,081	96,081
Petty cash		504	Less: Provision for depreciation	(96,081)	(96,081)
Bank of Melbourne	35,201				
CBA Operating Account	85,054	55,053			
ANZ V2	81,210	90,473	Furniture, fittings and equipment at cost	137,664	166,422
Mortgage Investment	30,000	30,000	Less: Provision for depreciation	(109,462)	(97,646)
CBA Deposit Holding	11,799	11,227		28,202	68,776
Macquarie	1,407	70,004	Motor vehicle at cost		22,422
	244,835	263,352	Less: Provision for depreciation		(2,242)
				20,180	
	12 months to 30 June 1999	6 months to 30 June 1998		28,202	88,956
	\$	\$			
7. Receivables			11. Payroll liabilities		
Trade debtors	19,835	17,603	PAYE tax payable	5,470	8,082
Less: provision for doubtful debts	(1,627)	(1,627)	Accrued superannuation	4,410	2,604
	18,208	15,976	Salary sacrifice	1,086	685
				10,966	11,371
8. Inventory			12. Provisions		
Tickets	5,806	3,207	Fundraising	1,683	23,766
			Annual leave	13,374	16,193
				15,057	39,959
9. Prepayments			Auditors remuneration		
Rent		1,284	Auditors of the Society :		
Insurance	761	2,606	Audit services		
Sundries	342	347	Other services		
	1,103	4,237			

Independent Auditors' Report to the Members of Arts Access Society Incorporated

Scope

We have audited the financial report of Arts Access Society Incorporated for the financial year ended 30 June 1999 being a special purpose financial report consisting of the profit and loss statement, balance sheet and accompanying notes. The members of the Committee are responsible for the financial report. The members of the Committee have determined that the accounting policies used and described in Note 1 to the financial statements are appropriate to meet the needs of the members. We have conducted an independent audit of this financial report in order to express an opinion on them to the Members of the Society. No opinion is expressed as to whether the accounting policies used, and described in note 1, are appropriate to the needs of the Members.

The financial report has been prepared for distribution to Members. We disclaim any assumption of responsibility for any reliance on this report, or on the financial report to which it relates, to any person other than the Members, or for any purpose other than that for which it was prepared.

Our audit has been conducted in accordance with Australian Auditing Standards. Our procedures included examination, on a test basis, of evidence supporting the amounts and other disclosures in the financial report, and the evaluation of significant accounting estimates. These procedures have been undertaken to form an opinion whether, in all material respects, the financial report is presented fairly in accordance with the basis of accounting described in Note 1 to the financial statements, so as to present a view which is consistent with our understanding of the Society's financial position and performance, as represented by the results of its operations. These policies do not require the application of all Accounting Standards nor other mandatory professional reporting requirements.

The audit expressed in this report has been formed on the above basis.

Audit Opinion

In our opinion, the financial report of Arts Access Society Incorporated is properly drawn up so as to present fairly the Society's financial position as at 30 June 1999 and its performance for the year ended on that date in accordance with the basis of accounting described in Note 1 to the financial statements.

KPMG

A Waters Partner

KPMG

A Waters Partner

Melbourne
23 November 1999

ACKNOWLEDGEMENTS

Arts Access would like to thank the following individuals and organisations

Arts Victoria

David Hughes

Les Mengoni

Sue McClements

Linda Lucas

Robyn Winslow

Department of Human Services

Margaret Newman

Beth Roberts

Ian Shaw

Jo Tomlins

Australia Council

Andrew Donovan

Susan Parker

Photographers

Catherine Aciri

Angela Bailey

Collin Bogaars

Caroline Cowley

Katie Hamilton

Ponch Hawkes

Rodney Nicholson

Garth Oriander

Lyn Pool

Others

John Coe, John Coe and Associates

Peter Davis Marketing

Dinnie Downie

Mark Healy, Six Degrees

Richard Henderson, FHA Image Design

Warren Hogan, project planning
and management pty ltd

Judy Morton

Nadrasca ATSS

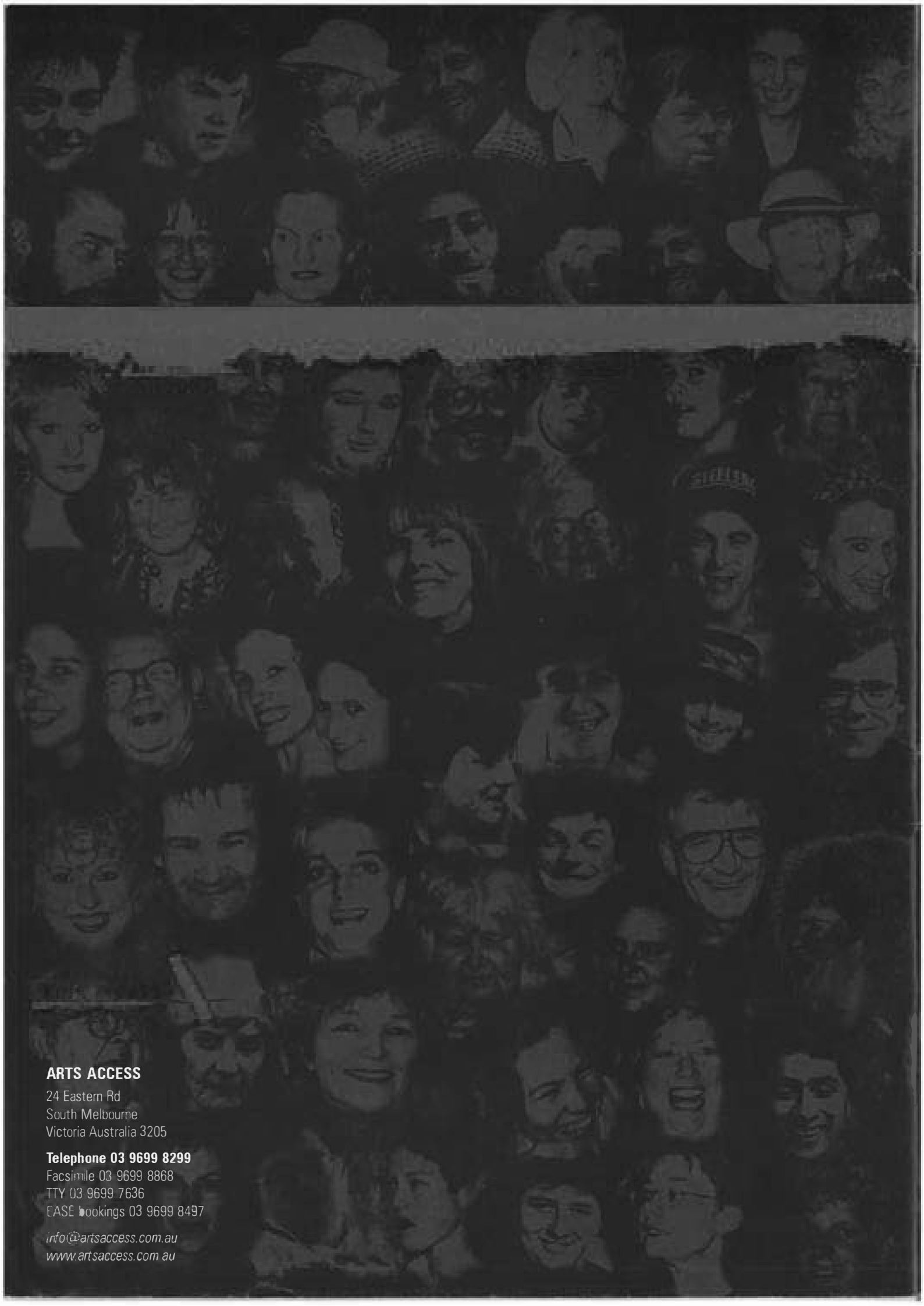
The Phoenix Project

John Pidd

Christine Rutter

Andrea Waters, KPMG





ARTS ACCESS

24 Eastern Rd
South Melbourne
Victoria Australia 3205

Telephone 03 9699 8299

Facsimile 03 9699 8868

TTY 03 9699 7636

EASE bookings 03 9699 8497

info@artsaccess.com.au

www.artsaccess.com.au