



HIGH BEAM

FESTIVAL

**Highlighting the creative abilities
of people with a disability**

ADELAIDE, SA

1-10 MAY 1998

PROGRAM GUIDE





The City of Adelaide recognises the particular needs and aspirations of people with a disability.

It whole-heartedly supports this inaugural festival and hopes to see it expand in the year 2000.



**The City of Adelaide proudly supports Adelaide Lighting The Way
Friday 1 May 1998**

7.30 pm start

Be dazzled by this opening night lantern parade of performers and artists from High Beam as they weave their way through the streets of Adelaide.

The parade will gather at Victoria Square between 6 & 7 pm.

At 7.30 pm it will travel north along King William St, turning right and travelling along North Tce and Pulteney St, concluding in Hindmarsh Square.

High Beam On The Streets Any time - Any place in the City!

CONTENTS

COMEDY

Cane'n Able - RP Song & Stories	5
Elizabeth Navratil - My Upside Down Life	9
Steady Eddy - High Beam Party/Cabaret	7

DANCE

Accelerator Dance Theatre Co. - mph	4
Ausdance - Celebrate!	4
Catherine Chappell & Dancers - Touch Compass	5
Company Chaos - Company Chaos	6
Restless Dance Company - The Flight	10
State of Flux - Dance/Physical Theatre	11

MULTI MEDIA

D Faces of Youth Arts - Wa-Wa-Wa Wonder Wheels	6
--	---

MUSIC

Fine Lines - CD Launch	7
Chris Finnen - Chris Finnen Blues Band	7
Holdfast Bay Community Choir - Choir	8
Mudmen - Mudmen Live	9
Scafell Pike - High Beam Party/Cabaret	10

PERFORMANCE

Maureyn Brees - Post Modern Polio Pilgrim	5
High Beam Festival - Adelaide Lighting The Way	7
High Beam Festival - High Beam At The Gov	3
High Beam Festival - High Beam On The Streets	7
High Beam Festival - High Beam Party/Cabaret	7
High Beam Festival - Lights Out	8
Kura Yerlo-Karrarendi Adults Group	
- Karrarendi - Rise Above, Be Proud	8
No Strings Attached - Touched	10
Southern Youth Theatre Ensemble - 3 Ring Circus	10
Thrifty Word Production Company -	
A Gallimaufry of Poetry, Oratory & Drollery	11
Karyn White - I'm Ulrike Screaming	11

SEMINARS & WORKSHOPS

Anorexia Bulimia Nervosa Association	
- International No Diet Day	4
Ausdance - State of Flux Workshops	4

High Beam Festival Seminar	
- Art, Self Expression & Identity Seminar	7
MOOMStheatre - Seminar	9
MOOMStheatre - Lecture/Demonstration	9
MOOMStheatre - Workshop - Ways of Working	9
SASRAPID - Scribblers	10
Aviva Sheb'a - Voice, Movement & Painting Workshop	10
Neridah Wyatt-Spratt - Making Contact	11

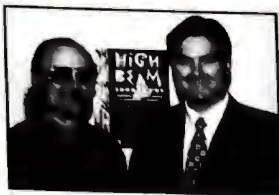
VISUAL

Anglican Church Open Office - Telling My Story	4
Arts & Ability - Sun On Our Shoulders	4
Frank Barresi - Conglomerate	5
Sophia Borick - Mixed Abilities	5
Broughton Arts Society	
- An Exhibition of Paintings and Pottery	5
Cascade Place - Wheel Art	5
Community Access Services of SA - Phantasmagoria II	5
Cornwall Arts Council - First Works	6
DADAA (WA) Inc. - Reversing the Gaze	6
DISSA - Spiralling Out	6
High Beam Festival - Mixed Abilities	8
High Beam Festival - Phantasm and Desire	8
Interactive Gallery - Conglomerate	8
Intersport Holidays SA - Instant Imagination Intersport	8
Brigitte Jones - Phantasm and Desire	8
Jacques Koch-Orthoff - Wild and Adventurous	8
Kura Yerlo-Karrarendi Adults Group	
- Rise Above, Be Proud	8
Lifestyle Links Program - Inspirations	9
Media Resource Centre - Shortcuts & Byways	9
NICAN - Celebration of Ability	9
Ossi & Aussie Art - An Aussie & Ossi Experience	10
George Schwerdt - Phantasm and Desire	10
Miles William Wheaton - Phantasm and Desire	11

OTHER

Ability Network - Arlex Arts	4
Ability Network - Bush Dance & Gourmet BBQ	4
Ability Network - Best of the Biennial	4
DADAA National Network	6
Ffrench Fashions - Fashion Lingerie	6

INTRODUCTION



Tony Doyle & Fred Heidt.

'Serendipity' comes to mind when thinking about the origins of the High Beam Festival. Arts In Action had the ideas, the Australian Hotels Association through Hotel Care Community Projects had the money and the SPARC Disability Foundation was able to bring it all together. Although the High Beam Festival might have begun as a 'fortunate and accidental discovery', it's been all hard work since then! I take this opportunity to acknowledge the efforts of Arts In Action and the genuine interest and support provided by our major sponsor, the Australian Hotels Association (SA), together with our other generous sponsors. Without all these essential ingredients, the inaugural High Beam Festival would not have happened.



Fred Heidt
Executive Director, SPARC Disability Foundation

Welcome to High Beam, Adelaide's newest Arts Festival.

This initiative from people with a disability offers the broader community a Festival of rich and diverse creativity and entertainment. For ten days we will follow High Beam in and out of Adelaide's streets and top venues. Celebrate with us as we explore the colours, sights and sounds of a Festival that will model cultural inclusiveness and integration. Create with us a ten day microcosm of a better and more interesting world.

Tony Doyle
Director, Arts In Action



HIGHLIGHTS

Wednesday 29 April, 1 - 3 pm

HIGH BEAM ON THE STREETS LAUNCH

Any time - Any place in the city!

Initiated and sponsored by the City of Adelaide, High Beam On The Streets will surprise and delight you. For ten days you will be entertained on buses, street corners and in the Rundle Mall. Whether you are shopping or having lunch in the city, you will be entertained by performances and previews from the High Beam Festival - and it's absolutely FREE!

Friday 1 May, 7.30 - 10 pm

ADELAIDE LIGHTING THE WAY

Part of the High Beam On The Streets Program

Be dazzled by this opening night lantern parade of performers and artists from High Beam as they weave their way through the streets of Adelaide. This moving spectacle will feature thousands of lanterns which will light the way for the ten days of events which follow. Commencing at Victoria Square and culminating in a dramatic finale in Hindmarsh Square. Supported by the Disability Services Office and the City of Adelaide. Phone High Beam Hotline for details.

Saturday 2 May, 7.30 pm - 1 am

OPENING PARTY/CABARET

ru:bik(o)n precinct, Adelaide Entertainment Centre

Adelaide's most exciting cabaret venue will feature some of Australia's top music, comedy and dance. Soak in the atmosphere with Steady Eddy, Chris Finnen Blues Band, Adam Hills, Restless Dance Company, Liz Navratil, State of Flux, Scafell Pike and mph.

Supported by the Adelaide Entertainment Centre.

Sunday 3 May, 3 - 7 pm

HIGH BEAM AT THE GOV LAUNCH PARTY

Governor Hindmarsh Hotel

Every festival needs a place where people can meet, exchange ideas, see exciting events and participate in workshops. The Launch Party will be a rich and exciting afternoon in the well-loved 'Club Contagious' style, with music, dance, visual arts, food and good times.

Supported by The Governor Hindmarsh Hotel.

Monday 4 & Tuesday 5 May, 9 am - 4.30 pm

ART, SELF EXPRESSION AND IDENTITY SEMINAR

Spotlight Room, Adelaide Entertainment Centre

A two-day seminar confirming the creative energies of people with a disability. The themes of the seminar will be: Exploding the Myths, Challenging the Blocks and Making Change. Artists who have experienced disability in their lives will explode myths such as "If you have a disability you can't be a professional". Speakers will include Janice Florence from State of Flux Dance Company, comedian Liz Navratil, singer and community worker Pat Rix, visual artist Lucile Carson and performer Peter Vance. There will also be panel sessions to discuss such issues as Disability Culture.

Supported by the Disability Services Office and the Adelaide Entertainment Centre.

Wednesday 6 May, 11 am - 12.30 pm

REVERSING THE GAZE, VISUAL ARTS LAUNCH

Atrium, City West Campus, University of SA

Presented by High Beam in association with DADAA (WA).

Reversing the Gaze is an exhibition of photographic and digital media works by seventeen members of DADAA (WA). The exhibition explores the disabled gaze, through a combination of image, text and digital manipulation. Reversing the Gaze offers audiences a challenge to existing notions of disability culture. "Energetic, passionate and confronting". Reversing the Gaze offers "Honesty, and an abundant sense of art as a tool. Art as both catharsis, and journey into the unknown". Launch includes live entertainment at the Lion Arts Centre Courtyard. Exhibition runs from 1 - 10 May.

Sunday 10 May, 4.30 pm

LIGHTS OUT

Wayville Showgrounds

The closing event in conjunction with Arlex Disability Expo. A thank you celebration for all the volunteers, performers, artists, presenters and organisers who have contributed to the success of the High Beam Festival, the Biennial Conferences and the Arlex Exhibition. Get into the party spirit with food, drinks and entertainment.

HIGH BEAM FESTIVAL



HIGH BEAM AT THE GOV LAUNCH PARTY

A rich and exciting afternoon in the well-loved 'Club Contagious' style, with music, dance, visual arts, food and good times. Performers include: Fine Lines Band, Sassafras, Holdfast Bay Community Choir, Peter Vance, Jahlilah, Southern Youth Theatre Ensemble, Lee Van Oosten, Donald Fairhall, Karyn White, kyvileigh and guest spots by festival performers.

3 May, 3 - 7 pm

Governor Hindmarsh Hotel, 59 Port Rd, Hindmarsh

Prices: Waged \$4/Conc. \$3

Tickets: High Beam Hotline or at the door

HIGH BEAM FESTIVAL



HIGH BEAM AT THE GOV

A program of workshops during the day and performances & events in the evening. There's always something happening at The Gov. Each day has a different theme so there is something for everyone! Workshops are led by experienced tutors from Adelaide & interstate working in the area of arts by people with different abilities.

4 - 8 May

Governor Hindmarsh Hotel, 59 Port Rd, Hindmarsh

Prices: Workshops: \$2, bookings essential

Tickets: High Beam Hotline or at the door

Prices: Performances: see individual listings

Tickets: at the door

MONDAY 4 MAY - THE SPOKEN WORD

10 am - 12 noon & 1 - 3 pm Drama Workshops

with tutors from Southern Youth Theatre Ensemble

6 pm High Beam Dinner

two course meal and features Cosmic Friends of Bandit.

Price: Waged \$18/Conc. \$15 includes admission to Cabaret Gov

Tickets: High Beam Hotline

8 pm Cabaret Gov

A fast moving panorama of short performances ranging from stand-up comedy to music & poetry. Including Liz Navratil, Cane 'n Able, Thrifty Word Production Company, Karyn White, Combined Holdfast Bay/Box Factory Community Choirs and many more.

Prices: Waged \$4/Conc. \$3

TUESDAY 5 MAY - BODIES IN MOTION

10 am - 12 noon Movement and Dance Expression

workshop with Company Chaos.

1 - 3 pm Contact Dance Improvisation

with Neridah Wyatt-Spratt. This workshop specifically caters for people with a sight disability.

8 pm Dancin' at The Gov

a night to kick up your heels and join in as well as see some hot short performances from festival artists.

Special guests African Waza band and Jahlilah.

Prices: Waged \$4/Conc. \$3

WEDNESDAY 6 MAY - THE SINGING VOICE

10 am - 12 noon & 1 - 3 pm Pat Rix

well-known Adelaide composer/writer/musical director Pat Rix gives you the chance to use and unlock your voice in whatever way you want to.

8 pm SA Blues Society

presents Chris Finnen and blues jam session.

Prices: Waged \$5/Conc. \$3

THURSDAY 7 MAY - ORIGINAL & CROSS CULTURAL

10 am - 12 noon Philip Allen

presents Aboriginal music & dance.

1 - 3 pm Sam Oshodi

presents African music & dance.

8 pm Folk Federation of SA Inc.

presents Mudmen & Cane 'n Able.

Prices: Waged \$5/Conc. \$4

FRIDAY 8 MAY - CELEBRATING SURVIVAL

A day of workshops and performances that celebrate the role of the creative arts in rebuilding our lives, especially for survivors of mental illness.

10 am - 12 noon Techniques That Keep Us Sayne!

movement & painting with Aviva Sheb'a.

10 am - 12 noon & 1 - 3 pm Creative Arts as Therapy

with visual artist Wendy Tapper.

1 - 3 pm Leisure Link

presents 'Process Versus Product in Community Arts & Disability' - a forum to discuss ways to achieve different levels of participation for people with a disability in community arts. A dynamic panel from the High Beam Festival will open the forum and your minds! Open to everyone. Afternoon tea provided.

Prices: Waged \$5/Conc. \$2

Tickets: Oksana Kosa (08) 8234 2080

8 pm Fine Lines CD launch

original songs by Fine Lines band, with performances from 'Arts in the Murray Mallee' group.

Free admission

FOR INFORMATION ABOUT DISABILITY ACCESS CALL THE HIGH BEAM HOTLINE

ABILITY NETWORK



ARLEX ARTS

Arlex is more than a show of equipment for people with a disability. Arlex includes art exhibits, art demonstrations and performing arts as well as entertainment for children.

8-10 May, 10 am - 5 pm

Wayville Hall, Wayville Showgrounds, Wayville

Price: Waged \$6/Conc. \$4/Family \$12

Tickets: At the gate

ABILITY NETWORK



BUSH DANCE AND GOURMET BARBECUE

Join delegates from the Disability Biennial Conferences as you enjoy good food, friendly company and diverse entertainment. Wear warm clothes, your dancing shoes and a smile! Families welcome.

9 May, 6.30 - 10.30 pm

Lyrebird Restaurant, Adelaide Zoological Gardens, Frome Rd, Adelaide

Price: \$27

Tickets: Ph. (08) 8377 2295

ABILITY NETWORK



BEST OF THE BIENNIAL

The Disability Biennial (1-10 May) includes three national conferences focussing on physical access, spirituality and employment. This event will feature the most informative and inspirational of the Biennial's national and international presenters, together with some of High Beam's most popular performances. One night only.

8 May, 7.30 - 10.30 pm

Thebarton Theatre, Henley Beach Rd, Thebarton

Price: Waged \$30/Conc. \$10

Tickets: Venue*fix Ph. (08) 8223 7788

ACCELERATOR DANCE THEATRE COMPANY



MPH

Starring performers Stephen Noonan and Jotham Broad, mph is a synthesis of dance and theatre, combining striking imagery and music with spoken word in a total theatre experience. mph will appear at the High Beam Party/Cabaret, Ausdance's Celebratel event and the High Beam Art, Self Expression and Identity Seminar.

ANGLICAN CHURCH OPEN OFFICE



TELLING MY STORY

Resident artists, Colin Ackerman and Dianne Butcher join a host of others in giving us a glimpse of their lives through their art.

Opening: 1 May, 6 pm

by Archbishop of Adelaide the Rt. Rev Dr Ian George

2 - 10 May 12 noon - 8 pm

The Open Gallery, St Barnabas Anglican Church

4A William St, Croydon

Free admission

ANOREXIA BULIMIA NERVOSA ASSOCIATION



INTERNATIONAL NO DIET DAY

Join us to celebrate International No Diet Day. Health and positive self-esteem exists in a diversity of shapes and sizes. Restrictive eating and excessive exercising are disabling and damaging. Find out why diets don't work and explore ways of creating a more peaceful relationship between your body and food. All welcome.

6 May, 10.30 am - 12.30 pm

2nd Floor, 47 - 49 Waymouth St, Adelaide

Price: Waged \$8/Conc. & Members \$5

Tickets: Ph. (08) 8212 1644

ARTS AND ABILITY



SUN ON OUR SHOULDERS

An exhibition of works on canvas as visual dialogue between members of Arts and Ability (Community Bridging Services, Gilles Plains TAFE), a group of energetic people using art as a tool towards personal and cultural growth.

1 - 8 May, Mon - Fri 9 am - 5 pm

Centre Gallery, Education Centre, 31 Flinders St, Adelaide

Free admission

AUSDANCE



CELEBRATE!

A dynamic cavalcade of dance, movement and physical theatre highlighting local and interstate performers. Featuring the talents of local professional and emerging artists, celebrating dance in all of its diversity. Come along and wish Ausdance a happy 21st Birthday!

3 May, 7 pm

Adelaide Town Hall, King William St, Adelaide

Price: Waged \$7.50/Table of 10 \$70/Under 12 free

Tickets: BASS 131 246 or

BASS online www.bass.com.au

AUSDANCE



STATE OF FLUX WORKSHOPS

A series of two Contact Improvisation workshops with an integrated approach incorporating Skinner releasing techniques and improvisation performance skills. Welcoming people with a physical disability.

2, 3 May, 9 am - 1 pm

SA Deaf Society Hall, 262 South Tce, Adelaide

Price: Ausdance, Arts In Action Members \$60/

Ausdance, Arts In Action Members Conc. \$40/

Non Members \$ 90/ Conc. \$70

Tickets: Ausdance (08) 8231 9407

FOR INFORMATION ABOUT DISABILITY ACCESS CALL THE HIGH BEAM HOTLINE

FRANK BARRESI

CONGLOMERATE

'Fire Me': The head of the alien spirit Zuttonium, the Freudian id which is troubling the artist's soul is offered to the gods on galvanised iron. The other panels signify an abstract allurements of female and male genitalia, while the oil painting represents society's pressures for the artist's conformity. The work was derived from an experience at a demolition site and premonitions. See Interactive Gallery.

SOPHIA BORICK

MIXED ABILITIES

Sophia is a deaf professional photographer. She studied biomedical photographic communications in the USA. After working in the biomedical field for a couple of years she now runs her own photographic service specialising in the disability, child care, medical and paralegal areas. She has also won awards for her photographic work in disability awareness promotional activities. See High Beam Festival, Mixed Abilities.

MAUREYN BREES

POST MODERN POLIO PILGRIM

A costumed, manual wheelchair performance using movement, gesture, voice utterance-sound poetry, involving both an individual roving aspect and grounded engagement with the audience.

9 & 10 May, 1 pm & 3 pm

**Arlex Exhibition Performance Space,
Ridley Convention Centre & Exhibition Hall,
Wayville Showgrounds, Wayville**

Free admission to the performance

See Arlex Arts for admission charges to the Expo.

BROUGHTON ARTS SOCIETY

AN EXHIBITION OF PAINTINGS AND POTTERY

A collection of works by members of the Broughton Arts Society. The Society provides classes in arts and crafts for people with a disability with the supervision of qualified teachers. For further information phone (08) 8372 5100.

1-10 May, Library opening hours.

**Unley Civic Centre Library,
Cnr Unley Rd & Oxford Tce, Unley**

Free admission

CANE'N ABLE

RP SONG AND STORIES

Ever wondered what it would be like to be blind, losing your sight and watching the world fade away? Peter Vance, VIP, shares some of the lighter moments of having a cane and remaining able. He takes a humorous look at the serious challenge of raising community awareness about the needs and aspirations of VIP's (Vision Impaired People). Peter will appear in the High Beam On The Streets Program and High Beam At The Gov and as a speaker at the High Beam Art, Self Expression and Identity Seminar.

CASCADE PLACE

WHEEL ART

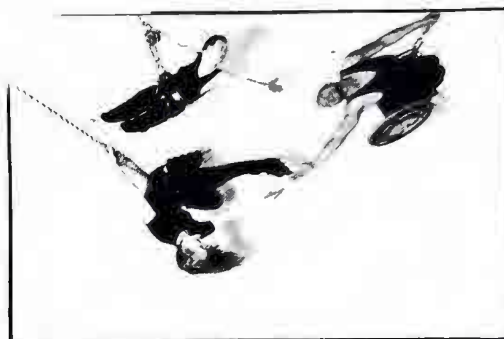
Featuring the work of wheelchair artists from Cascade Place, Queensland, exploring new and collective ways to produce exciting and original work. The works are created by mark-making and gestural painting using the movement of wheelchairs and feet. Textile artist, Mariangela Vecchi worked with the artists to construct this collection of beautifully colourful and energetic wall hangings.

4 - 8 May, Mon - Fri 9 am - 5 pm

9 May 11 am - 2 pm

**Auditorium Foyer, Adelaide Town Hall,
King William St, Adelaide**

Free admission



Catherine Chappell and Dancers. Photograph: John McDermott

CATHERINE CHAPPELL AND DANCERS

TOUCH COMPASS

Catherine Chappell and Dancers presents New Zealand's first integrated dance season by disabled and able-bodied dancers. Enter the wacky, wonderful world of flying wheelchairs, spiralling bodies and dancing roller blades. A world where everything is possible!

30 April - 2 May

30 April: 8pm, 1 May: 11am & 8pm,

2 May: 2pm & 8pm

**Adelaide Festival Centre,
King William Rd, Adelaide**

**Prices: Waged \$22/Conc. \$18/PWD \$14 (no group
booking discount), Friday matinee \$10**

Tickets: BASS 131 246

BASS online www.bass.com.au

COMMUNITY ACCESS SERVICES OF SA

PHANTASMAGORIA II

Phantasmagoria II is a formal exhibition presented by a number of local artists with disabilities. It depicts their lives, experiences and aspirations by using various artistic mediums in the form of paintings, prints, sculpture and photographic display.

24 April - 15 May

Mon - Fri 10 am - 4 pm, Sun 2 - 4 pm

Launch: 24 April, 6.30 pm

**Port Community Arts Centre, Black Diamond
Centre, 66 Commercial Rd, Port Adelaide**

Free admission

COMPANY CHAOS



COMPANY CHAOS

Company Chaos is a mixed-ability dance and movement-based performance group from Byron Bay in northern NSW. Directed by Kat Worth, it integrates the skills and creativity of people living with and without disabilities. The Company embraces all physical arts and more recently included in their performance is voice and physical theatre expression. Company Chaos is part of the High Beam at the Gov Program and the Ausdance Celebrate! event, and will appear in High Beam On The Streets.

CORNWALL ARTS COUNCIL



FIRST WORKS

Presented by High Beam in association with the Cornwall Arts Council. An exhibition of twenty two-dimensional art works by artists with intellectual disabilities, curated by Sue Henderson. Selected from a show of seventy two works, originally exhibited in Launceston in December 1996.

1 - 10 May, Mon - Fri 9 am - 5 pm, Sat 2 - 5 pm
Atrium, Adelaide Institute of TAFE, 120 Currie St, Adelaide
Free admission

D FACES OF YOUTH ARTS



WA-WA-WA WONDER WHEELS

A multimedia performance utilising the cartoon genre with movement and music to create an account of the physical and social obstacles faced by people with a disability through the metaphor of "A Great Space Race".

2 May, 8 pm
Odeon Theatre, Cnr Queen St and The Parade, Norwood
Price: Waged \$10/Conc. \$6
Tickets: at the door

DADAA NATIONAL NETWORK



Disability in the Arts, Disadvantage in the Arts, Australia (DADAA) is the peak national arts body which informs, advocates and lobbies for participation by people with disabilities in the cultural life of Australia. The DADAA Executive and Coordinator will play an active role in the High Beam Art, Self Expression and Identity Seminar. They will also be conducting their annual face to face meeting and be available for discussion during the High Beam Festival.

Ph. DADAA (08) 9336 4007 or Fax: (08) 9336 4008

FOR INFORMATION ABOUT DISABILITY ACCESS CALL THE HIGH BEAM HOTLINE



Photograph from *Reversing the Gaze*. Artist, Ingrid Sheur.

DADAA (WA) INC.



REVERSING THE GAZE

Presented by High Beam in association with DADAA (WA). *Reversing the Gaze* is an exhibition of photographic and digital imaging works by members of DADAA. *Reversing the Gaze* sets out to confront and challenge existing notions of disability by providing the technical tools to artists with disabilities to investigate their experiences of disability culture.

1 - 10 May
Mon - Fri 9 am - 5 pm, Sat & Sun 2 - 5 pm
Launch: Wed 6 May 11 am
Yungondi Building, Atrium, City West Campus, University of SA, 61 - 73 North Tce, Adelaide
Free admission

DISSA



SPIRALLING OUT

An installation work incorporating painting, images and text created by artists with Dissociative Identity Disorder as part of their healing process.

1-10 May
Mon - Thur 9 am - 5.30 pm, Fri 9 am - 9 pm
Citicentre Arcade, 11 Hindmarsh Sq, Adelaide
Free admission

FFRENCH FASHIONS



FASHION LINGERIE

Gaye Ffrench presents her latest creations of intimate lingerie and nightwear especially designed for women with a disability. Ffrench Fashions offers an extensive range of exciting and appealing feminine garments which are comfortable and easy to wear.

8, 9, 10 May, 10 am - 5 pm
Disability Expo, Ridley Convention & Exhibition Centre, Wayville Showgrounds, Wayville
Free admission
See Arlex Arts for admission charges to the Expo

FINE LINES

CD LAUNCH

Fine Lines is a community-based rock band whose members are survivors of mental illness. The band performs popular songs from the 60s to the present day, as well as original compositions. Fine Lines is currently producing its first CD of original songs which will be launched during High Beam At The Gov.

8 May, 8 pm

Governor Hindmarsh Hotel, 59 Port Rd, Hindmarsh
Free admission

CHRIS FINNEN

CHRIS FINNEN BLUES BAND

SA resident Chris Finnen has been an outstanding exponent of blues and world music around Australia for the past thirty years. His ingenious guitar playing and passionate vocals have attracted audiences of all ages. Don't miss the Chris Finnen Blues Band at the High Beam Cabaret/Party and Chris in solo mode during High Beam At The Gov.

HIGH BEAM FESTIVAL

ADELAIDE LIGHTING THE WAY

The High Beam Festival will illuminate our city with an extravaganza of light, sound and vision. Be dazzled by this lantern parade of performers and artists from High Beam as they weave their way through the streets of Adelaide. This moving spectacle will feature thousands of lanterns which will light the way for the ten days of events which follow. Commencing in Victoria Square and culminating in a dramatic finale in Hindmarsh Square with food and free entertainment until 10 pm..

1 May, 6 - 7 pm

Gathering at Victoria Square for 7.30 pm start
Free admission

HIGH BEAM FESTIVAL

ART, SELF EXPRESSION AND IDENTITY SEMINAR

A two-day seminar confirming the creative energies of people with a disability. The themes of the seminar will be; Exploding the Myths, Challenging the Blocks and Making Change. Artists who have experienced disability in their lives will explode myths such as "if you have a disability you can't be a professional in the arts." Speakers will include Janice Florence from State of Flux Dance Company, comedian Liz Navratil, singer and community worker Pat Rix, visual artist Lucile Carson and performer Peter Vance. There will also be panel sessions to discuss such issues as Disability Culture.

4 & 5 May, 9 am - 4.30 pm

The Spotlight Room, Adelaide Entertainment Centre, Port Rd, Hindmarsh

Prices: Waged \$25/day or \$40 for two days,

Conc. \$15/day or \$20 for two days

Tickets: High Beam Hotline

HIGH BEAM FESTIVAL

HIGH BEAM ON THE STREETS

Initiated and sponsored by the City of Adelaide, High Beam On The Streets will surprise and delight you. For ten days, you will be entertained on buses, street corners and in the Rundle Mall. Whether you are shopping or having lunch in the city, you will be entertained by performances and previews from the High Beam Festival.

29 April, 1 - 3 pm - Launch

Rundle Mall, Charles St, Entrance

6 May, 11 am - 12.30 pm

Lion Arts Centre Courtyard,

61 - 73 North Tce, Adelaide

7 May, 12 noon - 1 pm

Centre Gallery, Education Centre,

31 Flinders St, Adelaide

1 - 10 May

Any time! Any place in the city

Free admission

HIGH BEAM FESTIVAL

HIGH BEAM PARTY/CABARET

Adelaide's most exciting cabaret venue will feature some of Australia's top music, comedy and dance. The internationally acclaimed Steady Eddy draws on his brilliant wit to relive many of his life experiences growing up with a disability. Soak in the atmosphere with Steady Eddy, Chris Finnen Blues Band, Adam Hills, Restless Dance Company, Liz Navratil, State of Flux, Scaffell Pike and mph. Smoke-free venue. Auslan interpreter present.

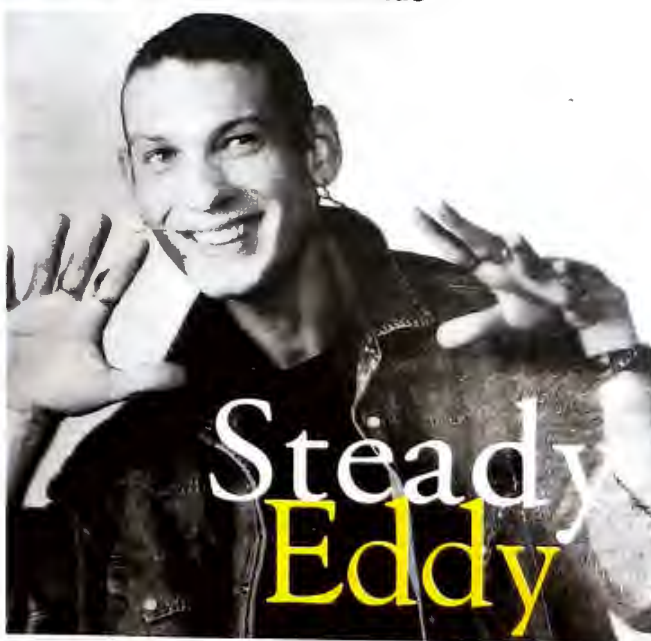
2 May, 7.30 pm - 1 am

ru:bik(o)n precinct, Adelaide Entertainment Centre, Port Rd, Hindmarsh

Price: Waged \$18/Conc. \$12

Tickets: BASS 131246

BASS online www.bass.com.au



Appearing at the High Beam Party/Cabaret

HIGH BEAM FESTIVAL



MIXED ABILITIES

An exhibition of photography, paintings, drawings, glass and ceramics by artists with a disability.

1 - 30 May

Mon - Thur 10 am - 6 pm, Fri 10 am - 8 pm,

Sat & Sun 1 - 5 pm

City of Adelaide Library, Kintore Avenue, Adelaide

Free admission

HIGH BEAM FESTIVAL



PHANTASM AND DESIRE

A group show of drawings, paintings, sculpture and prints by six talented visual artists: Brigitte Jones, Elizabeth Renner, George Schwerdt, Wendy Tapper, John Ways and Miles Wheaton.

6 - 24 May, Mon - Sun 12 noon - 6 pm, Fri to 9 pm

Zone Gallery, 1st floor, 80 Hindley St, Adelaide

Free admission

HIGH BEAM FESTIVAL



LIGHTS OUT!

A thank you celebration for all the volunteers, performers, artists, presenters and organisers who have contributed to the success of the High Beam Festival, the Biennial Conferences and the Arlex Exhibition. Get into the party spirit with food, drinks and entertainment. Entry passes available from Arts in Action, or the Biennial Office at the Showgrounds from 6 May.

10 May, 4.30 - 6.30 pm

Ridley Pavilion, Wayville Showgrounds, Wayville

Tickets: High Beam Hotline

Free admission with entry pass

HOLDFAST BAY COMMUNITY CHOIR



CHOIR

The choir is an initiative of the Leisure Services Department at Minda Inc. Sponsored by the SPARC Disability Foundation, this integrated choir includes people with and without a disability and is led by the well-known singer/song writer/composer/playwright and musician Pat Rix. The choir will perform during High Beam At The Gov and the High Beam Art, Self Expression and Identity Seminar.

INTERACTIVE GALLERY



CONGLOMERATE

A collection of diverse works by Frank Barresi, Fidelis, Agravaine MacLachlan and Stevan Howison. The show presents sculpture performed, abstract emotive explorations, autobiography and an investigation of the "Cheap as Chips" novelty object.

1 - 29 May, Opening: 1 May, 6 pm

Tues - Thurs 12 noon - 8 pm,

Fri-Sat 12 pm - 12 midnight, Sun 2 - 8 pm

The Interactive Gallery, 254 Hindley St, Adelaide

Free admission

INTERSPORT HOLIDAYS SA



INSTANT IMAGINATION INTERSPORT

Display and descriptive photographic gallery of prints from artists who combine photo image and unique overlays.

1 - 10 May

Mon - Fri 9 am - 5 pm, Sat 9 am - 12 noon

Ground Level Foyer, 130 Franklin St, Adelaide

Free admission

BRIGITTE JONES



PHANTASM AND DESIRE

Decisions in Stone: There is something about a rock that is still organic, with fossils and irregularities throughout, "working" it is all decision-making. Even a very definite idea can be altered by the nature of the stone. See High Beam Festival, Phantasm and Desire.

JACQUES KOCH-ORTHOFF



WILD AND ADVENTUROUS

Three-dimensional art works using and incorporating materials such as barbed wire, stones, sand, plastic and wood to create a sculptural effect. Also features welded sculptures.

1-10 May, 11 am - 6 pm

Marion Road Art Gallery, 154F Marion Rd, West Richmond, entrance from Passmore Street

Free admission

KURA YERLO-KARRARENDI ADULTS GROUP



RISE ABOVE, BE PROUD

An exhibition of paintings created by participants in the Karrarendi Cultural Program. Karrarendi is the Kaurna term meaning "to rise above, to be proud". The Adults Group has been meeting at Kura Yerlo Centre since 1995. Art workshops have added a new dimension to many participants' lives; becoming a part of the Aboriginal Community, learning about Aboriginal Culture and exploring their own creativity. For further information contact Sue Castledine on (08) 8449 7367.

25 April - 10 May, 9 am - 5 pm Mon - Fri

4, 5, 6 & 8 May, 9 am - 8 pm

Theatre One Foyer, Parks Community Centre

Theatre Complex, Cowan St, Angle Park

Free admission

KURA YERLO-KARRARENDI ADULTS GROUP



KARRARENDI - RISE ABOVE, BE PROUD

Isolation is common to those institutionalised. Add the impact of being excluded from your cultural heritage and you begin to understand the effect upon the spirit of the Aboriginal people in care. A collage of expression, melded with the fun of performing and the joy of revealing your personal story.

4, 6, 8 May, 7 pm

Theatre One, Parks Community Centre Theatre

Complex, Cowan St, Angle Park

Price: Waged \$5/Conc. \$3

Tickets: Kura Yerlo (08) 8449 7367 or at the door

LIFESTYLE LINKS PROGRAM INSPIRATIONS

An exhibition of paintings and photography created by participants of Lifestyle Links Arts and Disability Program. The work is the outcome of an artist-in-residence project aimed at assisting participants to develop their skills and distinctive style of expression through the exploration of a range of painting techniques and approaches to image-making.

1-10 May

Mon, Wed, Fri 11 am - 5 pm, Tues, Thurs 11 am - 8 pm

Sat 10 am - 1.30 pm, Sun 2 - 5 pm

Tea Tree Gully Library, 98 Smart Rd, Modbury

Free admission

MEDIA RESOURCE CENTRE

SHORTCUTS & BYWAYS

This unique screening features animations from the Arts Project Australia; *Shortcuts*, the S.A. premiere of 'My Song to You', a City of Melville and SNIAG special initiative, Accessible Arts' Loud video project 'What's Wrong With Me?' and a number of other short films made by Australian artists with a disability. The screening will be followed by a presentation and open discussion with *Shortcuts*' project coordinator Tina Douglas.

Phone the MRC on (08) 8410 0979 for program details.

7 May, 7.30pm

Mercury Cinema, 13 Morphett St, Adelaide

Price: \$5

Tickets: at the door

MOOMSTHEATRE

A SEMINAR WITH MOOMSTHEATRE

MOOMStheatre, from Malmo, Sweden, is a performance company of intellectually disabled actors who work full-time at their theatre and get paid for it. With video examples, the artistic director highlights MOOMS' strategies of building a platform for success, of creating job opportunities, of making a lot happen with a little budget, and more!

9 May, 2.30 pm

Ngapartji, 211 Rundle St, Adelaide

Price: Waged \$15/Conc. \$10

Tickets: at the door



*Fine Lines.
Photo by Messenger Newspapers.*

LECTURE/DEMONSTRATION WITH MOOMSTHEATRE

Hear how MOOMStheatre developed from a part-time in-care project to a full-time professional theatre company. Memories, anecdotes, video examples and laughs with the artistic director, Kjell Stjernholm.

2, 4, 6, 9 May, 1 pm

Ngapartji, 211 Rundle St, Adelaide

Price: Waged \$5/Conc. \$2

Tickets: at the door

WORKSHOP WITH MOOMSTHEATRE - WAYS OF WORKING

Have fun learning the work process from beginning to end, exercises that develop skills, how to create characters using each actor's potential. And more...For actors and directors, students and teachers.

3 May, 1 pm

Tandanya, 253 Grenfell St, Adelaide

Price: Waged \$15/Conc. \$10

Tickets: at the door

MUDMEN

MUDMEN LIVE

A musical performance full of original songs featuring unreleased material; a taste of their third CD - yet to come. Highlighting the night with a brass section and a dynamic sound.

7 May, 8 - 10 pm

Governor Hindmarsh Hotel, 59 Port Rd, Hindmarsh

Prices: Waged \$5/Conc. \$4

Tickets: at the door

ELIZABETH NAVRATIL

MY UPSIDE DOWN LIFE

Stand-up comedy act taking a comical look at the day to day life of a person with cerebral palsy, particularly from a woman's point of view. Liz will appear at the High Beam At The Gov, High Beam Party/Cabaret and will be a speaker at the High Beam Art, Self Expression & Identity Seminar.

NICAN

CELEBRATION OF ABILITY

A photographic exhibition depicting people with a disability in situations where they have control of their lives freedom, independence and adventure. The exhibition is the result of a national photographic competition for the International Day of Ability, to promote positive experiences in the lives of people with a disability.

1 - 10 May, Mon - Sat 9.30 am - 5.30 pm

**Space Theatre Foyer, Playhouse Building,
Adelaide Festival Centre, King William Street**
Free admission

NO STRINGS ATTACHED

TOUCHED

Touched in the head...touched in the heart...touched by evil...touched by good...touched by magic. Journey with Adelaide's theatre of disability on an adventure you won't forget. Limited seating. Venue totally accessible.

2, 3, 6, 7, 9 & 10 May, 7pm

Tandanya (Main Gallery, West End Gallery and Theatre) 253 Grenfell St, Adelaide

Price: Waged \$15/Conc. \$7

Tickets: BASS 131 246 or at the door

BASS online www.bass.com.au

OSSI & AUSSIE ART

AN AUSSIE & OSSI EXPERIENCE

A collection of twenty five photographs and original acrylic paintings. Photographed and captured through the eyes of an artist with a disability travelling with a carer through the Australian outback, Germany and Greece.

1 - 15 May

9 am - 5.30 pm, Monday to Friday

Muscular Dystrophy Association,

36-38 Henley Beach Rd, Mile End

Free admission



Restless Dance Company's Ziggy Kuster.

Proudly presented by the Adelaide Festival Centre and sponsored by the Australia Council, South Australian Youth Arts Board and Internode.

6-9 May

The Space Theatre, Adelaide Festival Centre, King William Rd, Adelaide

7.30 pm daily, additional performance 8 May 11am

Preview: 6 May 11am (\$10)

Price: Waged \$18/Conc. \$13/Group \$15/Access program \$10/School \$7/Disadvantaged \$5

Tickets: BASS 131246 or at the door

BASS on line www.bass.sa.com.au

RESTLESS DANCE COMPANY

THE FLIGHT

Restless Dance Company takes off into the emotional vortex of eighteen young performers who express their independence, ambition and desires in a stunning piece of dance theatre. Co-directed by Liam Steel of the UK's DV8 Physical Theatre, Restless's Sally Chance and Caroline Daish, with live music. Design by Gaelle Mellis.

SCAFELL PIKE

HIGH BEAM PARTY/CABARET

Scafell Pike is the legendary Celtic-Rock band from Adelaide, boasting some of the great musical names of South Australia. Originally formed in 1990, the band has headlined national and state Folk Festivals, and played the inaugural WOMADelaide as part of the 1992 Adelaide Festival of Arts. Scafell Pike will appear at the High Beam Party/Cabaret.

SASRAPID

SCRIBBLERS

An art appreciation program for people with an intellectual and/or other disability. Tuition provided by an experienced artist. Learn basic skills, meet people and have fun.

From 20 February, Fridays, 11 am - 3 pm

The Box Factory Community Centre,

59 Regent St South, Adelaide

Price: \$5 per session

Tickets: at the door

GEORGE SCHWERDT

PHANTASM AND DESIRE

The artist communicates through expressionist paintings with the use of colour and forms that reveal his internal struggle to express the pain in his life. See High Beam Festival, Phantasm and Desire.

AVIVA SHEB'A

VOICE, MOVEMENT AND PAINTING WORKSHOP

Hilarious fun, quietly meditative, relaxing, exhilarating! This workshop will lead to improved coordination, breathing, voice, speech, flexibility, self-esteem. Join the world-wide network of people who have enriched their lives during the past three decades by working with Aviva Sheb'a. Maximum fifteen participants. Also appears as part of High Beam At The Gov.

9 May, 1.30 - 3.30 pm

Thebarton Community Centre Reception Hall, 125 South Road, Thebarton

Price: \$5. Carers assisting participants free.

Tickets: Ausdance (08) 8231 9407

SOUTHERN YOUTH THEATRE ENSEMBLE

3 RING CIRCUS

Energetic Youth theatre performance troupe. Tackles the concept of change and how it affects our lives.

5 May, 7.30 pm

Parks Community Centre, Cowan St, Angle Park

7, 8 & 9 May 7.30 pm

Noarlunga Community Arts Centre, 22 Gawler St, Port Noarlunga

Price: Waged \$7.50/Conc \$5.50

Tickets: (08) 8384 6744 or at the door

STATE OF FLUX

DANCE/PHYSICAL THEATRE

Small, mixed-ability dance group. The style of performance is intimate, risk-taking and unpredictable. State of Flux will appear at the Ausdance Celebrate! event and the High Beam Party/Cabaret. Janice Florence will be a speaker at the Art, Self Expression & Identity Seminar.

D

THRIFTY WORD PRODUCTION COMPANY

A GALLIMAUFRY OF POETRY, ORATORY & DROLLERY

Riding on the success of their 1998 Fringe Festival Production, *Word Salad, Gristle and Laughs from the Menu*, these four theatrically-minded Adelaide performance poets embrace a range of styles from lofty romantic and Shakespearian language to streetwise hip-talk, to present a one hour show of satirical, personal and political comment on every subject from rock music to social philosophy.

"Genuinely entertaining, honestly, eclectic, intelligent and witty...these guys are proof Adelaide still has it's own sense of humour." Tony Love - The Advertiser.

1, 2, 3 & 8 May, 8 pm

City of Adelaide Community Centre, 23 Coglin St, Adelaide

Price: Waged \$8/Conc. \$5

Tickets: at the door

P

MILES WILLIAM WHEATON

PHANTASM AND DESIRE

The artist's work is concerned with human aspirations and how they can be dealt with artistically. The human figure in relation to nature is the greatest inspiration for the soul. See High Beam Festival, Phantasm and Desire.

V

FOR INFORMATION ABOUT DISABILITY ACCESS CALL THE HIGH BEAM HOTLINE

KARYN WHITE

I'M ULRIKE SCREAMING

A disturbing and confronting monologue that tells of the empowerment and isolation of someone with an acquired disability. This very dramatic monologue is viewed through the eyes of Ulrike Meinhoff, a political prisoner sentenced to life imprisonment. Part of High Beam At The Gov.

P

NERIDAH WYATT-SPRATT

MAKING CONTACT

Do you believe that all people have the potential to dance? Never danced before, but wanted to? Then this is the workshop for you! Neridah will be running a workshop for people with a sensory disability and people who want to explore and learn the movement form Contact Improvisation. Neridah Wyatt-Spratt will appear as part of High Beam at The Gov.

W



No Strings Attached.
Rebecca Phipps, David Buzzacott, and Margie Collins. (L to R)

HIGH BEAM STAFF

SPARC HIGH BEAM TEAM

Fred Heidt	Executive Director
Gwynalyn Paine	Director Fundraising & Public Relations
Paul Christie	Director Projects Development
Trisha Helbers	Promotions Coordinator

HIGH BEAM STAFF

Tony Doyle	Artistic Director
Lorraine Denton	Finance & Administration Manager
Joanne Petitdemange	Event & Publicity Coordinator
Bob Petchell	Gov & Community Program Coordinator
Nola Routoulas	Exhibitions' Coordinator

Bob Daly

Matthew Ives &
Lisa Capon
Phil Doherty
Kellie Jones
Nigel Dale
Jack Robins
Debra Clark
Helen Tetley
Lisa Pitman
Deidre Williams

Creative Director of
Adelaide Lighting the Way
Adelaide Lighting The Way
Coordinators
Light & Sound Technician
Opening Night Manager
Volunteer Coordinator
Administrative Assistant
Administrative Assistant
Administrative Assistant
Graphic Designer
Adviser & Evaluation

High Beam Festival C/- Arts In Action Inc. 101 Halifax St, Adelaide
South Australia 5000 Ph (08) 8232 6391 Fax (08) 8224 0709

AN EVENT TO REMEMBER...

ru:bik(o)n functions and multi-media precinct

UNIQUE • MEMORABLE • EXCITING

www.rublikon.sa.gov.au

SPOTLIGHTS FUNCTION ROOM

STYLISH • ELEGANT • CREATIVE

www.adelent.sa.gov.au

We can offer **The Arena** itself for very large functions
or a choice of smaller, more intimate function and meeting areas.

LET US PUT THE PIZZAZZ INTO YOUR VERY NEXT FUNCTION...CALL US!



THE ADELAIDE ENTERTAINMENT CENTRE
PORT ROAD, HINDMARSH, SOUTH AUSTRALIA 5007
P.O. BOX 113, HINDMARSH SOUTH AUSTRALIA 5007
TELEPHONE: 61 8 8208 2222 FACSIMILE: 61 8 8208 2233
www.adelent.sa.gov.au

It's amazing what you can build with a strong foundation

There are many worthwhile charities in our community that don't receive the benefit of much-needed professional fundraising or corporate sponsorship. That's why the Advertiser Sunday Mail Foundation was initiated. The Foundation organises regular fundraising events like the Annual Movie Ball, Adelaide Cup Ladies day and Melbourne Cup Ladies Day. Money raised from these events go

toward funding the tireless work of organisations such as those helping Cancer suffers, crippled children, homeless women and people with debilitating diseases. With the Foundation's support and your generosity, these organisations can continue to provide help and hope to the many needy people in our community.

Thank you.



THE ADVERTISER SUNDAY MAIL FOUNDATION INC

zper
780
.87
H638
b



HOTEL

COMMUNITY PROJECTS

MORTLOCK LIBRARY
OF
SOUTH AUSTRALIA

OVER \$1M IN COMMUNITY CONTRIBUTIONS

Since July 1996, **Hotel Care**, a major program of the AHA has provided funds to the following organisations:

Variety/Women & Children's Hospital	\$5000,000
Spastic Centres of SA	\$120,000
SPARC Disability Foundation	\$70,000
Wheelchair Sports	\$70,000
Anglican Community Services	\$50,000
Sir Thomas Playford Foundation	\$50,000
Canteen	\$40,000
Operation Flinders	\$35,000
Northern Suburbs Youth Project	\$30,000
Royal Society for the Blind	\$25,000
Anti Cancer Foundation	\$20,000
SA Olympic Appeal	\$20,000
Life Line	\$15,000
Hindley Street Youth Centre	\$10,000
Kidsafe	\$10,000
Make A Wish Foundation	\$10,000
Multiple Sclerosis Society	\$10,000
Cancer Research	\$5,000

\$1.090M

Hotel Care Community Projects contributions are in addition to individual support provided by hotels. Hotel Care gratefully acknowledges assistance from the Independent Gaming Corporation in allocating funds.

THE HOTEL INDUSTRY OF SOUTH AUSTRALIA IS PROUD TO BE THE MAJOR SPONSOR, CONTRIBUTING \$70,000 TOWARD THE HIGH BEAM FESTIVAL.

**AHA
SA**

AUSTRALIAN
HOTELS
ASSOCIATION
(SA)