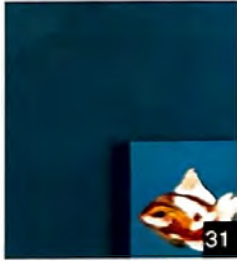
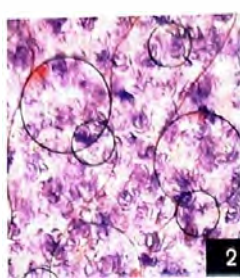
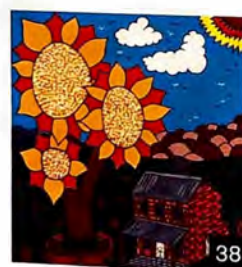
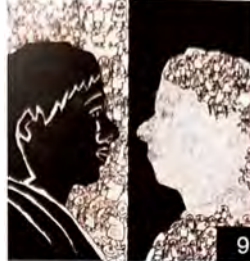





a-frame
exhibition and art auction





- 1 Garry King, ***Demon Within*** 2008
- 2 Desley Morris, ***Across the Universe*** 2008
- 3 May Devetzidis, ***My Radiant Mother*** 2008
- 4 Inta Alander, ***Fishing Fiesta*** 2008
-  5 Glen Bland, ***Self Portrait*** 2008
- 6 Maria Barbaliopoulos, ***Mixed Sweets*** 2008
- 7 Michae Miheala, ***Asian Delight*** 2008
- 8 Kimberley Sellars, ***Three Animated Girls*** 2008
- 9 Dana Nance, ***Little Men in Black*** 2008
- 10 Peter Smith, ***Postural Stress*** 2008
- 11 Andrew Kerr, ***Untitled*** 2008
- 12 Jean Winter, ***Karri Forest WA*** 2008
- 13 John Bodroghy, ***Vine Wood*** 2008
- 14 Robert Lomas, ***House of Colours*** 2008
- 15 Jackson Sheldon, ***Ollie*** 2008
- 16 Aimee Crathern, ***Spring Fever*** 2008
- 17 Keryn Bretag, ***It's not all black and white*** 2008
- 18 Owen Jones, ***Secret Place*** 2008
- 19 Margie Baker, ***Passion in Red*** 2008
- 20 Vanessa Burlinson, ***Mr Teddy*** 2008
- 21 Jo Polkinghorne, ***Casino*** 2008
- 22 Roslyn Mahoney, ***My Mind's Eye*** 2008
- 23 Vince Gilbert, ***Playtime*** 2008
- 24 Sue Nash, ***Dancing Girls*** 2008
- 25 John Mills, ***Pelicans*** 2008

- 26 Andrew Beck, ***A Wild Place*** 2008
- 27 Dianne Drogemuller, ***Celebration*** 2008
- 28 Vivienne Maynard, ***Viv and Doug*** 2008
- 29 Val Burnyoczky, ***The Wave*** 2008
- 30 Glenda Cloak, ***People inside the Windows*** 2008
- 31 Val Hahn, ***Little Fish in Big Pond*** 2008
- 32 Mark Roberts, ***Sea*** 2008
- 33 Norman Smith, ***Whirlpool*** 2008
-  34 Wendy Trow, ***When I grew up at Lobethal*** 2008
-  35 Jangle Phillips, ***Ned Kelly Spear-itt off Australia No. 10*** 2008
- 36 David Riddell, ***Exclamation Mark*** 2008
- 37 Christine Lanthois, ***Untitled*** 2008
- 38 Wayne Hore, ***Sunflower*** 2008
- 39 Jenna May, ***Six Faces*** 2008
-  40 Marlene Post, ***Swimming Pool*** 2008
- 41 Michael Rex, ***Feast*** 2008
- 42 Bryan Tingey, ***Philosophy of Language*** 2008
- 43 Jennifer Kirk, ***Bay Tram*** 2008
- 44 Jackie Saunders, ***Lizard*** 2008
-  45 Nicholas Nicola, ***Happy Thoughts*** 2008
- 46 Gail Haynes, ***Seahorse*** 2008
- 47 Jaya Orwin, ***Lucky Trunk Club*** 2008
- 48 George Tsioulidis, ***Shapes of Things*** 2008
- 49 Jasmine Jones, ***Flower Frenzy*** 2008
- 50 Helen Agius, ***Connections*** 2008

The A-Frame Exhibition and Auction was initially developed to address the critical need for development of pathways for artists with a disability toward recognition of their work in the visual arts mainstream. To achieve that goal it was important to present works in a prestigious venue, provide a catalogue to document artists work and offer a realistic opportunity for a sale. In this respect, A-Frame has been an outstanding success.

Our first thank you is to the Adelaide Festival Centre (AFC). In addition to the provision of the high-profile Foyer, we are indebted to the AFC Visual Arts Program who have made this state flagship facility available.

The importance of the catalogue and design is also not to be underestimated. We thank the University of SA's School of Design and particularly Drew Joyce and student designer Kieran Wallis who has prepared a new brand mark and catalogue for 2008. This level of assistance is documentation of a unique collaborative partnership.

With the 2008 A-Frame Art Exhibition the project has exhibited 150 works of South Australian artists with a disability. The exhibition is deliberately selective. The Judges Vivonne Thwaites and Paul Hoban remarked that the standard continues to rise. The Auction format almost guarantees a sale and for many artists it is the first time they can claim a legitimate open market transaction. In fact in both 2006 & 2007 the shows were a sellout and each year the average price per artwork has risen, proving both market value and collectability. Some credit for the sales is due to our Auctioneer, Richard Thwaites of LJ Hooker Kensington, who joins us again with his characteristic energy for the 3rd year to auction the works.

Our generous corporate partners are key contributors to mounting such innovative programs as A-Frame. We welcome a Principal Corporate Partner in 2008: DataMobilityVoice who have embraced the concept of corporate social responsibility with enthusiasm through their connections and communication with their business sector colleagues. We also recognise the continued contribution of Guardian Insurance and our web-gallery partner Adam Internet. We again particularly appreciate Amphora Wines contribution of fine wines for the Auction function.

Arts Access SA's capacity to develop this exhibition has arisen from the support of: the SA Government Through Arts SA and the Department for Families and Communities and the Australian Government through the Australia Council.

Arts Access SA is keen for South Australia to have a permanent gallery space and resources to make it possible for such artists to reach their full potential. We have seen projects interstate that offer individual respect and employment opportunities for artists. Arts Access SA has secured an "Underlease" for 106 Currie St Adelaide (venue for the Fringe - High Beam Exhibitions) as project centre for 2009 through a philanthropic gesture by Austereo. We are looking to establish an Access Creative Space and we encourage you to partner with Arts Access SA to deliver our vision of "cultural participation for all South Australians".

An exhibition of this kind is more than calling up a few people and hanging their pictures on a wall. The Arts Access SA staff team and volunteers have contributed magnificently to this project. They have demonstrated creativity and a continued enthusiasm for the development of visual arts for people with a disability.

The works presented in A-Frame demonstrate what a rich and compelling contribution to Australia's cultural life visual artists with disabilities can create. Thank you for contributing to this exhibition and of course, your bid!

Peter Tregilgas
Executive Director
Arts Access SA

Principal Partner



Creative Partners



South Australian
School of Art

Government Partners



Corporate Partners



South Australia to have a permanent gallery space
possible for such artists to reach their full potential.
state that offer individual respect and employment
Arts Access SA has secured an "Underlease" for 106
the Fringe - High Beam Exhibitions) as project
philanthropic gesture by Austereo. We are looking to
Space and we encourage you to partner with Arts
on of "cultural participation for all South Australians".

more than calling up a few people and hanging
Arts Access SA staff team and volunteers have
his project. They have demonstrated creativity
for the development of visual arts for people

ame demonstrate what a rich and compelling
cultural life visual artists with disabilities can create.
this exhibition and of course, your bid!

Payment and Collection of artworks

Successful bidders are to pay for their items in full at the Arts Access SA
registration table on the day.

Payment methods include Cash, Visa, MasterCard or Cheque (with identification).

The A-Frame Exhibition will remain on display in the Adelaide Festival Centre
Foyer from 5 - 23 November inclusive and no work may be removed until the
exhibition closes.

Items may be collected from the Arts Access SA Offices from Monday 1 December
between 9am-5pm (Note Christmas closure Fri 19 Dec - Mon 5 Jan included).

Items can be packaged and transported within the Adelaide Metro area by Arts
Access SA for a fee of \$55 including GST.

Items for any other destination will incur an additional fee for transport at cost.

Charity Status

Arts Access SA Incorporated is endorsed as a deductible gift recipient under
Sub-section 50-BA of the Income Tax Assessment Act 1997. Gifts of \$2 or
more are tax deductible.

As a charity art auction some opportunities may be available to buyers and we
would encourage you to read the article from Philanthropy Australia
www.philanthropy.org.au/affinity/aag/buysellartextract.htm

Copyright

Arts Access SA supports the work of disabled artists and would encourage any
buyer to be familiar with issues relating to Copyright and Visual Arts. The following
info sheet is available: www.copyright.org.au/pdf/acc/infosheets_pdf/G033.pdf

General Terms and Conditions of Sale

Arts Access SA Incorporated advocates for access and participation in South
Australia's arts and cultural life by all people with disabilities. This exhibition has
been developed by Arts Access SA in collaboration with the artists whose works
are presented. All the proceeds from this auction will be shared equally (50:50)
between the individual artist and Arts Access SA for each piece sold. All artworks
included in the auction are for sale. A reserve price of \$100 (one hundred dollars)
has been set as a value for each individual artwork.

Going, Going, Gone

The auction will be conducted by Richard Thwaites of LJ Hooker Kensington,
a Licensed Auctioneer, following his final call the item will be sold to the
highest bidder.

Bidders are required to be registered prior to the commencement of the Auction.
Each bidder will receive a numbered paddle which will need to be shown clearly
to the auctioneer.

Advance bids are to be made with Arts Access SA via its website:
www.artsaccess-sa.org.au, email: info@artsaccess-sa.org.au
or fax: (08) 8224 0709.

Deadline for advance bids: 5pm, Friday 14 November 2008.



Arts Access SA
A-Frame Exhibition and Auction
Foyer, Adelaide Festival Centre
King William Road, Adelaide
Auction: Sunday 16 November 2008
Commencing 2pm sharp - 5pm

Artwork viewing: 5 - 23 November or at:
www.artsaccess-sa.org.au

Arts Access SA Inc
ABN: 43 022 334 709
101 Halifax Street Adelaide
SA 5000 Australia
Telephone: (08) 8224 0799
Fax (08) 8224 0709

Email: info@artsaccess-sa.org.au
Web: www.artsaccess-sa.org.au

Government Partners

