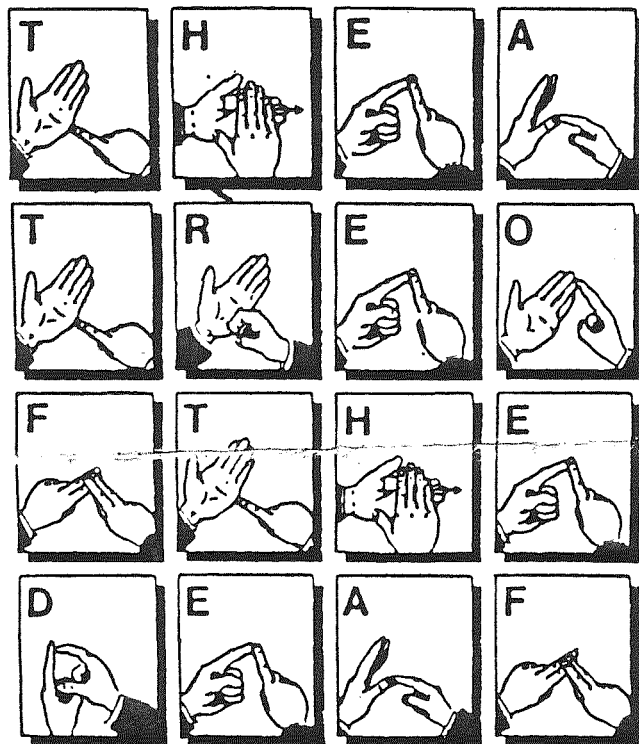


THE AUSTRALIAN ELIZABETHAN THEATRE TRUST'S

THEATRE OF THE DEAF

A UNIQUE STYLE OF THEATRE



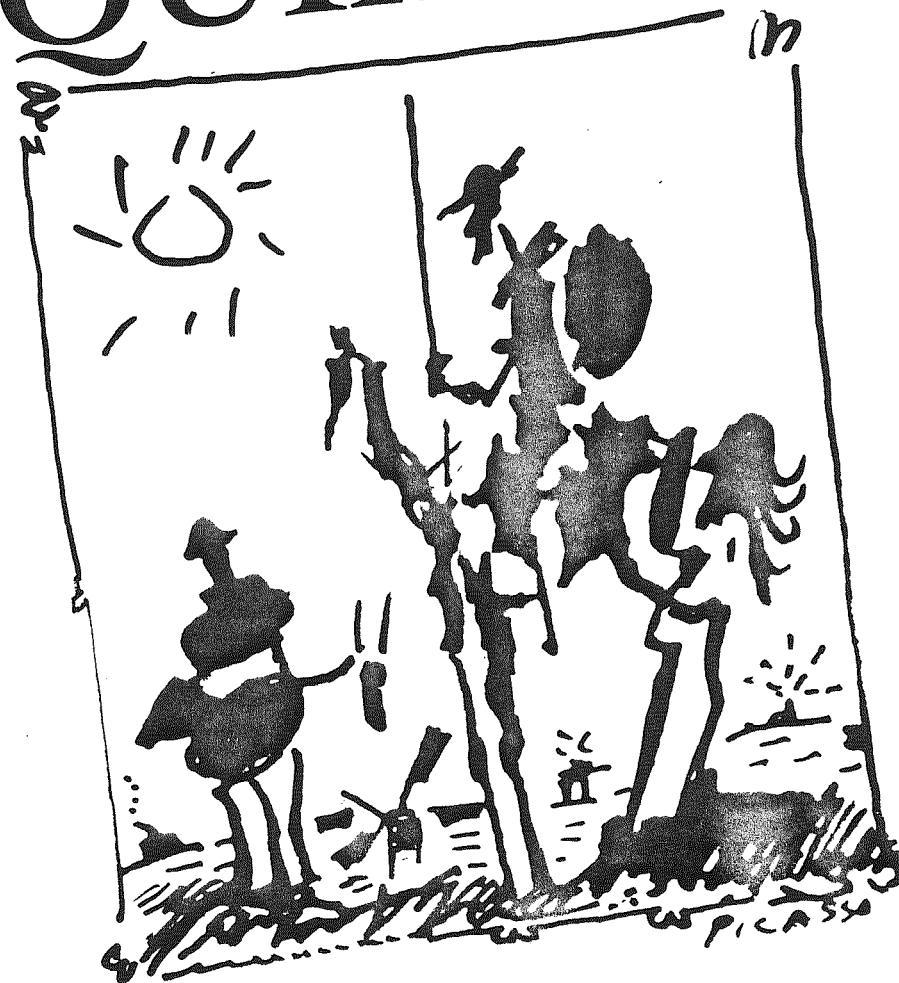
If you would like to be placed on our mailing list for future Theatre of the Deaf productions;
If you are interested in learning Auslan (Australian Sign Language);
If you are a teacher and would like an in-school performance;
OR if you would like information about our annual Summer School held in January of each year —

Contact Maggie Johannsen on 357 1200 bus. hrs. or write to:
The Theatre of the Deaf, 153 Dowling St., Potts Point 2011 N.S.W.

The Theatre of the Deaf
Presents

Cervantes'

DON QUIXOTE



An Australian Elizabethan Theatre Trust Production

Belvoir Street Theatre: September 7 - October 3

Rooty Hill R.S.L. Club: November 30 - December 5

The Theatre of the Deaf

DON QUIXOTE - ONE FANTASTIC KNIGHT

Adapted by **ERNIE GREY**
 Directed by **PATRICK MITCHELL**

Cast

Don Quixote	Steve Ripley
Actor 1	Jean St. Clair
Actor 2	Margaret Liddy
Actor 3	Colin Allen
Actor 4/Sancho	Karen Lantry
Understudies	Annie Mangan
	Sofya Gollan

Production Team

Sign Language Translation	Carol-lee Aquiline
	Steve Ripley
	Jean St. Clair
Assistant Director/Choreographer	Julia Cotton
Lighting Design	Kym Newell
Set Design	Simon Barley
Costume Design	Simon Barley & Janet Long
	Janet Long
Costume Execution	Kym Newell
Production Manager	Colleen Pillikse-Laidsaar
Stage Manager	Stephen Sturgess
Lighting Operator	Charlie Chan
Musical Advisor	

For the Theatre of the Deaf

Artistic Director	Patrick Mitchell
Administrator	Liz Marshall
Assistant Artistic Director	Carol-lee Aquiline
Project Co-ordinator	Maggie Johannsen
Sign Language Interpreter	Pam Spicer
Publicist	Bruce Pollack Management
Photography	Colourbox Photographics
	Corporate Photographic Services

The Theatre of the Deaf is a division of the Australian Elizabethan Theatre Trust. It is assisted by the Theatre and Literature Boards of the Australia Council, a statutory body of the Commonwealth Government and by the Office of the Minister for the Arts in NSW.

The Theatre of the Deaf would also like to acknowledge the support of the following organizations: The Deaf Society of NSW, Unilever Australia Ltd., Esso Australia Ltd., The Ian Potter Foundation, T.N.T. Ltd., A.G.C. Ltd., Brambles Industries Ltd., C.S.R. Ltd., Macquarie Charitable Foundation Ltd., the Commonwealth Bank of Australia and the A.N.Z. Bank Ltd., and Charles Blackman who loves Picasso.

Our thanks to the following for their kind assistance:

Priscilla Shorne, Neil Simpson, Belvoir Street Theatre, Leigh Rice, Dave Powys, Annie Aitken, William Collins Publishers North Sydney, Jacaranda Wiley Pty. Ltd., Hair colour-cutting-technician Patreata of Hedonists Kings Cross, Letitia of Oz Hair Town Hall, Cleary, Law & Associates Public Relations, Ray Griffiths and Perry Quinton for the Rooty Hill R.S.L. Club season.

The Australian Elizabethan Theatre Trust
 (Incorporated in the ACT)

PATRON

Her Majesty The Queen

PRESIDENT: Sir Ian Potter CHAIRMAN: Andrew Briger AM

CHIEF EXECUTIVE

Kathleen Norris

DIRECTORS

Rt Hon The Lord Mayor of Brisbane, Alderman S. Atkinson, Sir David Griffin CBE, The Hon Justice C.J. Legoe, K.E. Cowley, Dr. T. Manford, D.A. Mortimer, L.G. Teale, L.D.S. Waddy, T.C. Yates, F.M. Hooke.
 Director of Finance: Mark Benvau