



1992 YEARLY REPORT

PHILOSOPHY AND AIMS OF ACCESSIBLE ARTS	page 1
SOME NSW DATA	page 2
COMMENTS ON THE 1992 PROGRAM FROM THE MANAGEMENT COMMITTEE	page 3
REPORT ON THE 1992 PROGRAM FROM THE CO-ORDINATOR	page 5
PROPOSED 1993 ACCESSIBLE ARTS PROGRAM	page 8
FINANCIAL REPORT	page 13



PHILOSOPHY AND AIMS OF ACCESSIBLE ARTS

Whether from the position of spectator or audience, to active amateur or professional participant, the arts enrich our lives in many diverse ways. From a heightened sense of identity and individual worth, to an outlet for the expression of thoughts, feelings and beliefs, to giving people a sense of community and belonging, the arts have been shown to be basic to all learning.

We are born with the desire to express ourselves. It is obvious that artistic and cultural pursuits are of fundamental importance to all people. People with disabilities are not the exception to this universal truth. Too often disability emphasises what a person cannot do and people with disabilities often faced limited life options. Creative expression can therefore be of critical importance. It provides the medium to reveal and develop positive abilities. From the position of passive recipients of care people can, in fact, initiate, interact, use their own judgement and, in the process, take control over their lives.

The aims of ACCESSIBLE ARTS reflect the belief that people with disabilities have a right to artistic expression and indicate a commitment to providing people with disabilities with creative opportunities and arts skill training.

ACCESSIBLE ARTS aims to:

- provide opportunities for people with disabilities to identify and develop their skills for creative self expression
- promote integration in all arts/cultural activities, training, venues, facilities and resources
- educate the arts industry, disability services and the broader community of the creative needs, potential and artistic achievements of people with disabilities
- act as a peak advocacy service promoting cultural democracy in NSW
- initiate Research and Development projects in the field
- establish regional networks to facilitate the aims of the organisation at a local and community level.

SOME NSW DATA

People with disabilities comprise 16.1% of the population (ABS 1988 Disability Survey).

900,000 people in New South Wales have some type of disability.

As may be anticipated, New South Wales has the largest number of people with disabilities. But as might not be expected, it currently is one of the most under-resourced states in terms of art and disability. In the areas of participation, integration and cultural development there have been only rare and under-resourced attempts to redress the inequity faced in connection with cultural activities and experiences.

New South Wales must be brought into line with other states. **ACCESSIBLE ARTS** is at the forefront developing a co-ordinated action plan for New South Wales. Policy and strategies must be developed and implemented to provide people with disabilities with access to creative opportunities. With support **ACCESSIBLE ARTS** will be able to: clarify and inform the New South Wales situation; address the causes of disadvantage in the arts; provide the opportunity to pool skills to develop 'new' solutions; and concentrate on the effective dissemination of information and material to broaden community awareness.



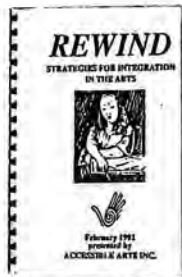
COMMENTS ON THE 1992 PROGRAM FROM THE MANAGEMENT COMMITTEE

1991-1992 has been a turbulent and exciting time for **ACCESSIBLE ARTS**. The organisation has moved premises three times and has been the victim of two burglaries. The positive result of all this is that **ACCESSIBLE ARTS** has now relocated to long-term accommodation at the NSW Writers' Centre, Rozelle.

During this period **ACCESSIBLE ARTS** has achieved an enormous amount including the establishment and development of four regional art networks and associated projects. These four projects, initiated in 1991, culminated in our travelling advocacy kit *THE SUITCASE SHOW*, which has since toured extensively throughout the state. The regional networks are going from strength to strength and continue to develop art activities and projects.

In early 1992 **ACCESSIBLE ARTS** ran a successful one-day training seminar entitled *REWIND - STRATEGIES FOR INTEGRATION IN THE ARTS*. The seminar was attended by over sixty participants including artists, arts administrators, disability workers, health workers and recreation staff. Over half of these participants travelled from regional areas to attend; this fact alone attested to the urgent need for such training seminars.

The staff have refined the organisational base of **ACCESSIBLE ARTS** and have developed the data base for the information/resource service to the point where we can now provide accurate information about the arts and disability in most regional areas. *A.C.E.* magazine is now produced three times a year and has become a valuable resource and promotional vehicle in the area of art and disability. The staff also provided a high level of consultancy to the many clients wishing to learn about the processes of developing projects and activities.



The last two years have seen **ACCESSIBLE ARTS** grow into a well-respected and widely known state-wide organisation and this is now reflected in the growing demands that are being made on the organisation's resources.

The challenge for 1993 are many. With the implementation of the Disability Services Act **ACCESSIBLE ARTS** will move from the Federal Department of Health, Housing and Community Services to the State Department of Community Services. The challenge will be to negotiate an ongoing partnership with the State.

At a time of recession **ACCESSIBLE ARTS** must consider the economic restraint placed on the public sector. The services of **ACCESSIBLE ARTS** are presently fully utilised by our four target groups. As the demands on the organisation grow across the state **ACCESSIBLE ARTS** must take up challenges and find the means to service these needs.

The Co-ordinator, Helen Connors, has worked very hard towards planning for our future and has negotiated a grant from the Australia Council to contract a consultant to develop an innovative plan for future financial support.

The interest and support of **ACCESSIBLE ARTS'** membership has continued to provide impetus for our efforts. **ACCESSIBLE ARTS** provides a diverse service not only to people with disabilities but to arts groups, policy makers, disability services, artists and other interested individuals.

The membership is steadily increasing, with just over one-third now joining from regional areas, and organisations making up 50% overall. These organisations and individuals are helping to establish local and regional networks; initiating creative projects; many booked ***THE SUITCASE SHOW*** exhibition throughout 1992. In 1993 this continues with both metropolitan and regional participation in ***ARTS EXTRAORDINAIRE***.

ACCESSIBLE ARTS has come a long way and we are very proud to have been part of such a dynamic organisation.



THE SUITCASE SHOW



REPORT ON THE 1992 PROGRAM FROM THE CO-ORDINATOR

In a time of recession **ACCESSIBLE ARTS** has not only managed to maintain services but has continued to further develop many aspects of the overall program. This was achieved more through sheer determination than through additional financial support.

The belief in the right for artistic expression and a commitment to making creative opportunities more accessible to people with disabilities has ensured that difficulties were imaginatively overcome and programs and services developed. It is to the credit of volunteers, management committee, staff and the many individuals and organisations across the state that support the aims of **ACCESSIBLE ARTS** that the organisation has been able to achieve so much in two years.

The NSW Ministry for the Arts has provided affordable permanent housing in the NSW Writers' Centre. The Ministry plans to make the building accessible in early 1993. The function rooms vary in size and will provide a valuable resource for people with disabilities and will enable **ACCESSIBLE ARTS** to provide programs and training seminars on site.

Since 1990 **ACCESSIBLE ARTS** has formalised the various aspects of the annual program into three ongoing components. They are:

- 1) THE ORGANISATIONAL INFRASTRUCTURE
- 2) THE INFORMATION/RESOURCE SERVICE
- 3) THE ARTS PROGRAM

Evaluation of the annual program indicated the need to set a yearly priority. This year **STRATEGIES FOR INTEGRATION IN THE ARTS** guided the direction of the three main components.

The administrative procedures have developed and presently provide an efficient and effective organisational base. During 1992 **ACCESSIBLE ARTS** was able to provide this service to regional networks and smaller unincorporated groups that were successful in gaining support for art projects. There is potential for many groups to undertake arts initiatives if this service can expand. **ACCESSIBLE ARTS** is investigating a fee for service strategy.



At present there is very little statistical information on art and disability. The information/resource service has forged the groundwork for a state profile on art: programs, facilities, resources, training and venues available to people with disabilities. At a time when governments are basing their support on needs analysis it is important that this unique service continues to collect, collate and disseminate information and resource material. However, the state profile and the collection of statistical data depends on the ongoing support from the field to feed in information. In 1993 statistical information must be available to illustrate to governments that there is a real need to support ongoing art and disability initiatives in NSW.

The computer system has been developed to operate at a high standard of efficiency, providing the required information, resource and advocacy material. **ACCESSIBLE ARTS** can also produce advocacy and promotional material in-house, to a professional standard.

The information/resource service has drastically increased in the last 12 months. Enquiries increased from 212 for the period October 1991 to January 1992 to 525 for the period June 1992 to September 1992.

Since May 1990 these services have led to: the placement of 165 people in the **ACCESSIBLE ARTS** program, the placement of 272 people in community based programs and assisted in the development of 46 arts projects/programs and the employment of 83 artists.

A.C.E. magazine continues to be integral to the information/resource service and receives much positive feedback. This confirms the real need for this resource. A.C.E. continues to provide: a vehicle for showing art; a forum for discussion and exchange of information and skills; space for innovative concepts; and a promotional tool.

REWIND - a one-day seminar on **STRATEGIES FOR INTEGRATION IN THE ARTS** clearly indicated that the four target groups of **ACCESSIBLE ARTS** have specific training needs. The challenge in 1993 will be to provide the means to develop appropriate training packages. Appropriate training will ensure that existing art resources and facilities are better utilised by people with disabilities and that people have the opportunity for ongoing skills development.

Throughout 1992 **ACCESSIBLE ARTS** has widely distributed information on **THE SUITCASE SHOW** and the regional networks. I therefore will only briefly comment on these aspects. **THE SUITCASE SHOW** was the culmination of four projects run in various locations across the state. Each project imaginatively interpreted the broad topic of creativity through the mediums of photography, creative writing, visual arts, drama and radio technology. It is significant that with no financial support **THE SUITCASE SHOW** has continually travelled and has been exhibited with celebrities of the calibre of Arthur Boyd.

The regional networks illustrate that when a group of people committed to arts access and participation work together, future possibilities become more exciting. Presently these unique networks are inspiring in their potential and outstanding in what they have achieved in their local communities.

In 1992 ACCESSIBLE ARTS formed and developed alliances with many organisations and groups. An example is the partnership between Metro TV, South Sydney Council and ACCESSIBLE ARTS to develop a video project for people with a psychiatric disability. As well as producing a video this project provided worthwhile material for future skill training programs. In 1993 Metro TV and ACCESSIBLE ARTS will forge new ground working together to initiate a major broadcast quality 'soap opera'.

Important new directions were developed on a national basis with ACCESSIBLE ARTS' involvement in the establishment of a national body - *DISABILITY IN THE ARTS, DISADVANTAGED IN THE ARTS, AUSTRALIA (DADAA)*. With the arts funding dollars dwindling each year, this national body will have an important role in ensuring these groups receive an equitable share. NSW has representation across the state with resource people in many regions. The initial task for the state is to compile a profile on art resource facilities and programs available in NSW. Already over 800 questionnaires have been distributed and this will continue in 1993.

The future direction for ACCESSIBLE ARTS in 1993 was fully addressed at the two-day evaluation and planning meeting in December. 1993 is a productive time of change, challenge and existing initiatives and programs. The support and encouragement ACCESSIBLE ARTS has received from many sectors of the community re-affirms the belief that involvement in the arts provides many positive outcomes for the individual and community.



NATIONAL DADAA ARTABILITY CONFERENCE
QLD PERFORMING ARTS CENTRE OCTOBER 1992



PROPOSED 1993 ACCESSIBLE ARTS PROGRAM

In 1993 ACCESSIBLE ARTS has twin objectives:

- to raise money and in the process establish an ongoing fund-raising structure
- to promote ACCESSIBLE ARTS and the aims of the organisation

The major PR/fund-raising initiatives are:

HOUSE GANG - a comedy-drama series for television

CONSULTANCY - to develop a 5 year PR/fund-raising strategy

ARTS EXTRAORDINAIRE - a week of celebrating where the arts can take you

- **HOUSE GANG**

A series of 10 x 21-minute dramas for television. Set in a group house occupied by young people with intellectual disabilities (mostly Down Syndrome). A fast moving, funny and real look at the joys and dramas of every-day life for this colourful group of characters. Based on the soap opera formula, this series will have a freshness and originality about it that most soap operas have lost. What will make it immensely attractive to the audience is the great honesty, humour and directness of these actors.

All cast members with a disability are experienced performers, several with television credentials, and will be joined by professional actors without disabilities. Where necessary we will use sub-titles. Firstly, sub-titles will function to make clear unfamiliar speech patterns, and secondly, as a humorous gag to reveal the truth behind words.

The proposed **HOUSE GANG** series is an existing project that will be breaking new ground on many fronts. It will provide an innovative strategy in addressing the present disadvantage people with disabilities face in the film and television industry and it will provide a medium for integration through its capacity to speak directly to people and to form a bond of common interest. It is hoped that some notions about intellectual disability and about 'art' will, at the least, be challenged.

The active involvement of people with disabilities in **HOUSE GANG** will assist the wider community to make a first, if somewhat tentative, step towards recognising that people with disabilities have the potential to contribute positively to society. **HOUSE GANG** will demonstrate that people have the skills to tell their stories with humour, with poignancy, with passion and with individual vision.

In 1993 the joint venture will produce the pilot episode that will be marketed nationally and internationally. The pilot has received the support of both the public and private sector. This has included support from the Australian Film Commission.

- **CONSULTANCY**

If **ACCESSIBLE ARTS** is to provide an adequate state-wide service it must develop an ongoing fund-raising strategy that will resource the development and expansion of its services and programs. In 1993 **ACCESSIBLE ARTS** will design, with assistance from the Australia Council, a 5 year PR/fund-raising strategic development plan.

What will make this consultancy different is that there will be an emphasis on implementation during the process. **ACCESSIBLE ARTS** will take a pro-active role and work on specific tasks with the consultant - eg develop a marketing package. The major events of this year will be utilised to resource this plan.

- **ARTS EXTRAORDINAIRE ... CELEBRATING WHERE THE ARTS CAN TAKE YOU**

A multi-arts festival to be held 1-10 November, aimed at raising money and drawing attention to the untapped potential in people with disabilities to contribute to the cultural identity of Australia through a week of celebration including some or all of the following events:

DISCUSSION FORUMS: We will provide an opportunity for artists and the community to meet and discuss issues related to art and disability.

PERFORMANCE: This will cover a diversity of mediums from live music and readings to theatre.

COMMUNITY ARTS PROJECTS: We will present a showcase of projects from across the state.

FILM AND VIDEO: A venue will be sought for the exhibition of a range of works not normally presented commercially.

ART EXHIBITION AND CHARITY ART AUCTION: This will be held in conjunction with a charity wine auction. We will organise a competition for the production of an appropriate image for incorporation in a commemorative label for the bottles to be auctioned. The work of all finalists will be exhibited together with that of recognised artists. The best works will then be auctioned.

CHARITY WINE AUCTION: We propose that this function will form the focus of the week's activities. Our intention will be to make a high quality connection between art and wine; to conduct a gala event which may become an annual fund-raising event on the Sydney wine calendar.

Recognised artists and companies will participate in all events. An integrated focus will bring attention to the festival and will provide a forum for dialogue between the mainstream arts community and people with disabilities.



Through the process of developing these major initiatives ACCESSIBLE ARTS has developed new contacts and networks within both the public and private sector. A number of these contacts will be developed during the year and ACCESSIBLE ARTS will negotiate for their support as a Foundation member or as an ongoing financial or in-kind sponsor.

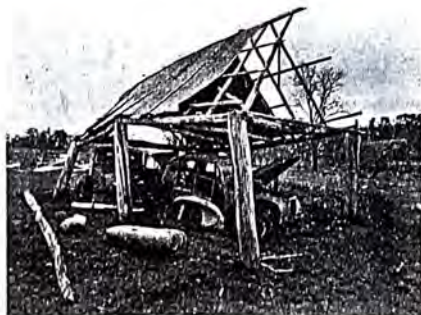
In 1993 the information and resource service and the arts program will continue to be priority activities of the organisation.

• THE INFORMATION/RESOURCE SERVICE

The organisation continues to develop and expand the data base. There are over 900 detailed entries and as the information develops the demand from enquiries continues to increase. During 1992 ACCESSIBLE ARTS negotiated with the Department of Health, Housing and Community Services to assist in the development of this service. The service now requires a full-time position to meet the demand and co-ordinate the required expansion to service NSW. Assistance has not been forthcoming at this stage and ACCESSIBLE ARTS now has to attempt to limit the service to 2 days. While the service continues to assist in the development of: arts initiatives across the state; creative opportunities for people with disabilities; and the employment options for both artists with and without a disability. The organisation has to direct staff time to other financially supported priorities.

In 1993 the main components of the information/resource service are:

- an enquiry service for people with disabilities, disability services, arts organisations and artists
- a consultancy service to individuals and groups to develop arts initiatives, art projects and arts skill training options. The 1993 figures for both the enquiries and the consultancy service have not been compiled but A.C.E. illustrates the diversity of organisations working with ACCESSIBLE ARTS.
- A.C.E. magazine. The demand requires a print run of at least 1000.



CENTRAL WEST PHOTOGRAPHIC PROJECT

- training. At March **ACCESSIBLE ARTS** has:

- designed and run a 6-day training program for people with intellectual disabilities in the responsibilities/duties of actors involved in a professional television production. Funded by Department of Social Security.
- provided 2 sessions for arts trainers involved in training people with disabilities.
- become a recognised CES training and employment assessor as well as being registered as a service that is paid to provide post training and employment support.

ACCESSIBLE ARTS has successfully negotiated for 5 people to receive training in video production, video editing and computer animation.

- been paid to provide training sessions to students at Cumberland College.
- developed a training program for volunteers.

- **THE ARTS PROGRAM**

- **ACCESSIBLE ARTS** is continually approached to establish regional networks across the state. **ACCESSIBLE ARTS** does not have the resources to provide adequate support and assistance to any additional networks. Demands from particularly the Hunter and western Sydney areas has led to **ACCESSIBLE ARTS** developing a proposal for the Area Assistance Scheme to resource and develop a network in western Sydney.
- **ARTS EXTRAORDINAIRE ... CELEBRATING WHERE THE ARTS CAN TAKE YOU** will be the major component of the arts program.



HOUSE GANG PROJECT - TRAINING WORKSHOP

However **ACCESSIBLE ARTS** is also involved in:

- developing a creative script-writing project for people with psychiatric disabilities living in South Sydney. This will be funded by South Sydney Council.
- a joint proposal with the NSW Writers' Centre to the Literature Board for a writer-in-community grant. The writer-in-community will work with residents and out patients of the Rozelle Hospital.
- a joint proposal with **ACCESSIBLE ARTS WAGGA WAGGA** for a writer-in-community and a multi-arts project.
- a drama/movement program for people with Intellectual disabilities who already have some experience. It is hoped that this group will become ongoing and that they will develop productions appropriate to the aims of **ACCESSIBLE ARTS**.
- Ward 18. Paramedics in consultation with **ACCESSIBLE ARTS** are investigating the use of the arts in developing a positive environment for people with severe dementia. Staff are actively involved in monitoring the models developed by the artist, **ACCESSIBLE ARTS** and staff. The process is being documented by the hospital as there is no similar initiative.
- the number of other arts programs in which **ACCESSIBLE ARTS** has input are considerable. This is reflected in projects illustrated in A.C.E.

• **THE ORGANISATIONAL INFRASTRUCTURE**

In 1993 **ACCESSIBLE ARTS** has:

- made the Administrator/Information Officer into two part-time positions - Administrator and Project Officer. This has enabled **ACCESSIBLE ARTS** to have people skilled and experienced in administration, information and arts projects/initiatives. Previously **ACCESSIBLE ARTS'** skills expectation from one person were too high.
- developed a volunteers program. 1993 will be the year that **ACCESSIBLE ARTS** effectively utilises volunteers. There are already a number of highly skilled people involved in **ARTS EXTRAORDINAIRE**.

FINANCIAL REPORT

ALAN J. WATSON

FCPA, ACIS, ACIM

Regd. Office: 22 Wallarah Road, Gorokan

Certified Practising Accountant
Regd. Company Auditor
Regd. Tax Agent

All correspondence to:
P.O. Box 382
Toukley NSW 2263
Phone & Fax: (043) 93 1352

ACCESSIBLE ARTS INCORPORATED

AUDITOR'S REPORT

I have audited the Accounts of Accessible Arts Incorporated for the twelve months ended 31st December 1992.

As an audit procedure it was not practicable to confirm income beyond accounting for amounts banked as shown by the accounting records of the Association.

Subject to the foregoing reservation, in my opinion :

- a) The accompanying accounts of Accessible Arts Incorporated have been properly drawn up in accordance with the Associations Incorporation Act 1984 and so as to give a true and fair view of :
1. The state of affairs of the Association as at 31st December 1992;
 2. The results of its operations for the 12 months ending 31st December 1992;
- and are in accordance with Australian Accounting Standards and applicable approved accounting standards.
- b) The Grants have been expended in accordance with purposes as approved by the funding bodies.

ALAN J. WATSON
18th March 1993.



ACCESSIBLE ARTS INC

INCOME & EXPENDITURE FOR 12 MONTHS ENDED 31ST DECEMBER 1992

CONSOLIDATION

	1992 \$	1991 \$
INCOME		
GRANT - DHH&CS	42,856	45,851
GRANT - MINISTRY OF ARTS	21,000	15,000
GRANT - AUSTRALIA COUNCIL	25,040	25,000
GRANT - BICENTENNIAL YOUTH	1,180	-
INTEREST RECEIVED	1,416	3,192
DONATIONS	600	20
MEMBERSHIP FEES	2,215	1,120
MISCELLANEOUS INCOME	3,314	2,095
TOTAL INCOME	97,621	92,278
EXPENDITURE		
ACCOUNTANCY & AUDIT	625	925
ADVERTISING	2,381	1,970
BANK CHARGES	352	353
BOOKS & PUBLICATIONS	80	914
COMPUTER EXPENSES	133	4,216
CONSULTANTS FEES	413	-
CONSUMABLES	546	384
EQUIPMENT	396	(4,471)
INSURANCE - WORKERS COMP	215	200
INSURANCE - GENERAL	1,414	617
MISCELLANEOUS EXPENSES	344	347
MOTOR VEHICLE EXPENSES	3,594	2,703
MOTOR VEHICLE REPLACEMENT FUND	-	1,000
PHOTOCOPIER SERVICE	440	461
POSTAGE	1,482	1,492
PRINTING & STATIONERY	4,200	4,006
PROGRAMME COSTS	5,718	18,353
RENT & ELECTRICITY	1,081	1,370
REPAIRS & MTC	55	40
SUBSCRIPTIONS	130	28
SUPERANNUATION	1,770	1,875
TELEPHONE & FAX	4,814	2,399
STAFF TRAINING	2,086	871
TRAVELLING EXPENSES	2,353	2,919
TUTORS FEES	910	-
WAGES	62,463	59,025
TOTAL EXPENDITURE	97,967	101,839
SURPLUS (DEFICIT) FOR YEAR	(366)	(9,361)

ACCESSIBLE ARTS INC

NOTES TO & FORMING PART OF THE ACCOUNTS
FOR YEAR ENDED 31ST DECEMBER 1992

NOTE 1. Statement of Accounting Policies.

- a) The accounts of the Association have been drawn up in accordance with accounting standards of the Australian Accounting bodies, applicable approved accounting standards and the requirements of law.
- b) Assets purchased are expensed in the year of acquisition. Any proceeds from disposal are classified by the source of funds used to acquire the assets initially.
- c) A provision has been made in these accounts for statutorily conferred employees' entitlements.

NOTE 2. Cash.

	1992 \$	1991 \$
Cash on Hand	250	150
ANZ Bank Cheque Account	48,854	5,035
ANZ Bank Cash Management Account	21,912	11,231
	71,016	16,416
	=====	=====

NOTE 3. Investments.

St. George Building Society Short Term Deposit	Nil	5,794
	=====	=====

NOTE 4. Creditors & Borrowings.

Trade Creditors	Nil	9,193
	=====	=====

NOTE 5. Provisions.

Provision for Holiday Pay	2,000	3,000
Provision for Vehicle Replacement	2,000	2,000
	4,000	5,000
	=====	=====

ACCESSIBLE ARTS INC

NOTES TO & FORMING PART OF THE ACCOUNTS FOR YEAR ENDED 31ST DECEMBER 1992

NOTE 6. Other Current Liabilities.

Advance Funding - DHR&CS
- Ministry of Arts
- Australia Council

1992
\$

1991
\$

10,787
20,000
25,875

10,638

-

-

56,662

10,638

Accrued Expenses :

- Audit Fees
- Group Tax
- Wages
- Letterhead Brochures
- State Conference

-

150

4,318

-

-

827

1,000

-

5,000

-

66,980

11,615

NOTE 7. Accumulated Funds.

Balance 1st January 1992

402

7,805

-

2,158

Plus Balance of former Project transferred

402

9,963

(366)

(9,561)

Surplus (Deficit) for year ended 31st December 1992

36

402

Balance 31st December 1992