



# Ease

## Entertainment Access Service

109-111 Sturt Street  
SOUTH MELBOURNE VIC 3205

Bookings & TTY: 699 8497  
Administration: 699 7636  
Fax: 699 8868

**EASE Staff**  
Dean Michael - EASE Project Officer  
Lisa McKoy - EASE Bookings Officer

**Volunteers**  
Karen Brooks, Roisin Johnson,  
John Pidd, Gaye Walsh, and  
NADRASCA volunteers.

EASE is a project of Arts Access and is funded from a range of sources, particularly the Federal Department of Community Services and Health (Disability Services) and Sport & Recreation Victoria. Income earned through service fees, subscriptions and ticket commissions helps support the project.

Arts Access is assisted by Arts Victoria and the Commonwealth Government, through the Australia Council, its arts funding and advisory body.



## Booking with EASE

**Booking Office Hours**  
Monday to Thursday  
10am - 4pm only

### What's On?

First check your daily papers, free entertainment guides and other sources of information, then check EASE dates in the *EASE Ticket Update* before booking.

### Bookings

Phone Lisa on 699 8497  
or TTY 699 8497

### Access Information

EASE can provide information about access and facilities at venues in and around Melbourne.

### Method of Payment

Pay at the EASE office or by posting a cheque or money order made out to ARTS ACCESS. Payment is never made at the venue. Please note Items 4 and 7 of the Conditions of Sale.

## Conditions of Sale

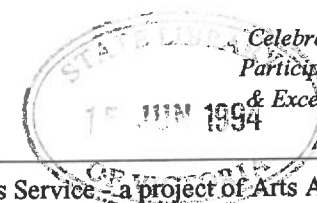
1. Tickets are sold only to EASE subscribers and are not transferable.
2. Tickets are sold to staff members of an organisation on the understanding that they are attending an event as a support person for the clients of that organisation, and under no other circumstances.
3. There is no exchange or refund of tickets. A booking cannot be cancelled.
4. Tickets must be paid for within 14 days.
5. EASE will purchase tickets, where possible, to suit a subscriber's particular requirements.
6. The EASE quoted price varies from the price printed on tickets because an EASE commission is added to each sale.
7. EASE staff reserve the right to cancel or suspend membership if conditions of sale are breached.

EASE is a newsletter of Arts Access Society Inc.  
Registered by Australia Post  
Print Post Publication No. PP 325649/1004

Ms Michelle Hosking  
State Library Of Victoria  
328 Swanston Street  
MELBOURNE 3000

If undelivered return to:  
Arts Access Society Inc.  
109-111 Sturt Street, South Melbourne, VIC 3205 Australia

# Ease



Celebrating 20 Years of  
Participation, Innovation  
& Excellence 1974-1994

# ARTS Access

Newsletter of the Entertainment Access Service - a project of Arts Access ISSN 1038-2879 Winter 1994



Above: Polly Hart, that American, 'Oprah-esque' talk show star has made it to Melbourne. Meet Polly and her equally incredible guests at Soup Kitchen Theatre's winter lunch shows at the Athenaeum Theatre. Right: Vicki Attard in Swan Lake. EASE has tickets to all of The Australian Ballet's 1994 Season.

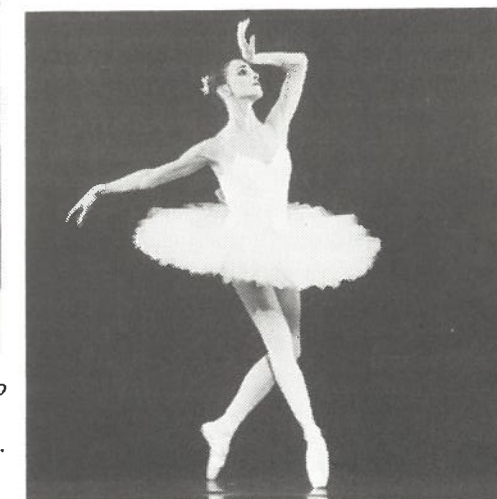
## Americans with Disabilities Seminar

In April a seminar was held at the Council of Adult Education in Melbourne in which four American women with disabilities spoke about the experiences of US citizens in relation to the Americans with Disabilities Act - which is very similar to our own Disability Discrimination Act (DDA).

They spoke of how a united community of people with disabilities has developed in the US, with everyone actively standing up for each others issues.

Marilyn Golden who works with the Disability Rights and Education Defence Fund spoke of how that organisation also works with other important groups such those from non-English speaking backgrounds, and unions, so that there is wider support within the community.

*Continued on page 2*



## CHAT - The Musical - a talk show that sings!

Soup Kitchen Theatre present one of the best entertainment deals in town - all winter long. For only \$5 you can see a fabulous half hour comedy show and enjoy a healthy lunch bag full of Potts bread, fruit and other goodies.

The venue, the Athenaeum Theatre, is well situated for public transport, being just near the intersection of Collins and Swanston Streets - just up the hill from the Town Hall. Groups can be dropped off and picked up outside the theatre. The venue is wheelchair accessible, but Soup Kitchen Theatre request advance notification so that staff can advise and assist groups using wheelchairs. Booking is recommended. The season runs from June to August. For all Soup Kitchen bookings and information phone 663 8395.

## Oz Ballet, Disney on Ice, and Netball are among EASE's Winter Specials...

For details see the *EASE Ticket Update*, inserted with this newsletter.

### INSIDE:

- \* New Disability Discrimination Advocacy Service
- \* New Column: Venue Profiles
- \* More Winter Highlights

EASE Bookings 699 8497 10am to 4pm Mon-Fri

AF  
790.  
19605  
EA7.



## EDITORIAL

As winter is fast approaching - okay, it has arrived - many people's thoughts turn to indoor activities, so we have a wide variety of indoor events available.

I would have liked to report that we had Melbourne's major outdoor winter sporting event to offer - yes, football. However, once again the AFL has rejected a proposal from EASE. We had requested fifty tickets at a maximum cost of \$5 each (the AFL concession price) to one game a week of the AFL's choice at the MCG. Needless to say we were disappointed with the AFL's response. We will continue our efforts to access AFL games through as many avenues as we can.

On a brighter note, we have some great shows to warm the cockles of your hearts! For musical fans we have *Buddy*, *Me and My Girl* and *The Pirates of Penzance*. Along with the regular theatre offerings, you can now see some of the best major Melbourne and Sydney productions at the Alexander Theatre at Monash University and the George Jenkins Theatre at Frankston.

We also have the Victoria State Opera and The Australian Ballet seasons, as well as an array of fine music, top basketball, traditional winter iceskating - and the successful London production of *"Thunderbirds F.A.B."*

Cheers,

*Dean & Lisa*

### From Page 1

The speakers emphasised that conditions will only improve when people with disabilities are prepared to take action to make changes. Having been 'separated out' from the rest of society, people with disabilities now need to be more visible to attain the same opportunities as non-disabled people.

They encouraged Australians to inform themselves of what the DDA says - and does - and learn what this new law means.

## NEWS

### EASE Consumers Group

Recently the Consumers Group has been advising on the content of a planned Information session to be held with BASS staff in the near future.

Information has also been sent to venue managers encouraging them to look at developing access policies for people with disabilities (PWD).

In the light of the Disability Discrimination Act, PWD can take an action against a venue if they feel they have been discriminated against. Access policies and action plans can enable all businesses to prevent such situations.

### Disability Discrimination Advocacy Service

In line with promoting the Disability Discrimination Act (DDA), the DDAS has been set up. Two people have been employed to carry out community education, assist people with cases and facilitate training. If you require more information on any of these issues, the DDAS can be contacted on 602 4877.

### Venue Guide Double Bargain!

Spread the word! EASE is still giving away both editions of *The Melbourne Venue Guide* for only \$2.50 - just to cover the cost of postage and handling.

This offer is due to the guides being out of date. However they still provide a good idea of access and facilities at 39 venues around Melbourne and some regional centres.

There are hints on how to make your visit more comfortable and enjoyable, and contain information on BASS and audio description.

Later this year we hope to produce a new venue guide, available by

### ARTS ACCESS STUDIO

A low-cost, multi-purpose space suitable for art and craft exhibitions, rehearsals, small scale performances, classes, workshops or seminars.

Facilities include:

- \* Wheelchair access
- \* Disabled toilets
- \* Disabled parking bay
- \* Audio & Video
- \* Exhibition hanging system
- \* Kitchen facilities
- \* Chairs
- \* Tressle tables
- \* Whiteboard
- \* Piano
- \* Catering - can be arranged next door at the Malthouse Cafe
- \* Easy public transport - trams 1, 2 and 4 stop outside.

The Arts Access Studio is located at 109-111 Sturt Street, South Melbourne.

For information contact Samantha on 699 8299 or TTY 699 8497.

subscription, and designed to be updated when necessary. In the meantime if you wish to take advantage of this offer send a cheque or money order for \$2.50 to:

Venue Guides,  
EASE/Arts Access,  
109-111 Sturt Street,  
South Melbourne VIC 3205.

### New Recreation Guide

The *Guide to Recreation and Disability Organisations* is the first Sport and Recreation Victoria publication to provide information on more than 200 disability recreation services and advocacy organisations.

The guide lists organisations by geographic area, as well as categorising by peak agency, disability agency, recreation program, tertiary institution, travel service and ethno-specific agency.

An index of agencies and programs provides a handy, quick reference.

Copies are available for \$5 each from: Information Victoria, 318 Little Bourke Street, Melbourne VIC 3000.

For postal orders add \$2.50 for return postage. To order phone (008) 136 762.

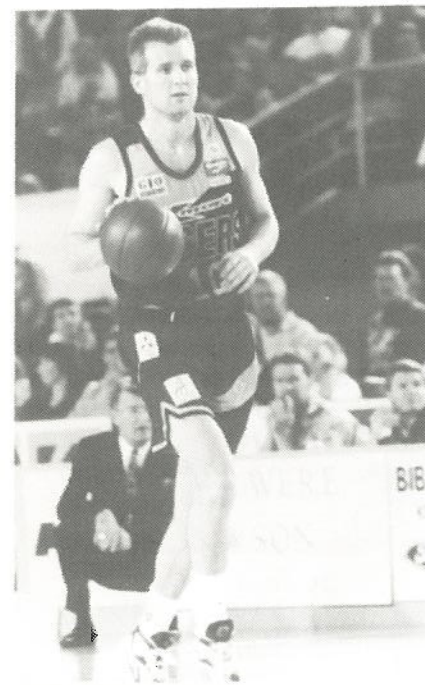
### Large Print Ticket Update

After consultation with EASE members with visual impairment, the *EASE Ticket Update* is now produced in large print form. Some of you may already be receiving this. However, if you are not, please contact Lisa on 699 8497 to arrange for your large printcopy to be sent. EASE is also exploring other avenues of promoting that ticket information to people for which the large print is not adequate. One option is a regular broadcast on radio station 3RPH.

### Letters

We would love to publish your comments and suggestions about any subject of interest to EASE subscribers - a recent visit to a venue, good and bad experiences, or new issues for EASE to follow up.

Write to Dean Michael at the address on the back of this newsletter.



## Sport

### International Netball

A new EASE offering! See the Milo Cup between Australia and Trinidad Tobago at the Glasshouse - the Sport & Entertainment Centre, on Wednesday July 20, at 7.00pm. Tickets are \$14.50.

### Basketball

Remember EASE now has tickets for the home games of three local NBL teams - Melbourne Tigers, North Melbourne Giants, and South East Melbourne Magic. For dates, venues and prices see the *EASE Ticket Update*.

Left - Andrew Gaze, Melbourne Tiger's local international star. Photo courtesy of the Melbourne Tigers.

## Music

Melbourne Symphony Orchestra  
Australian Pops Orchestra  
Sandy Beach Concerts  
Melbourne Town Hall Series  
Australian Chamber Orchestra  
Musica Viva  
Foster & Allen

All details in the *EASE Ticket Update*.

## Comedy

*Thunderbirds F.A.B.*  
Athenaeum Theatre

Hilarious, inventive comedy based on the 60s British futuristic TV puppet show. Details in the *EASE Ticket Update*.

## Theatre

Alexander Theatre,  
Monash University - *NEW!*

George Jenkins Theatre,  
Frankston - *NEW!*

Rod Goss Theatre,  
Moorabbin Arts Theatre  
- *Cheap but not through EASE.*

Bell Shakespeare Company

MTC and Playbox  
All details in the *EASE Ticket Update*.

## Music Theatre

### Pirates of Penzance

Her Majesty's Theatre

The rollicking Gilbert & Sullivan musical success from ten years ago, now re-vamped with star cast including Simon Gallaher as Frederick, John English as the Pirate King and Glyn Nicholas as the Modern Major General.

*Me and My Gal*  
Princess Theatre

Rewritten by Stephen Fry, this English musical is set in the 1930s and follows an Upstairs Downstairs My Fair Lady theme. London's West End Musical of the Year. Features 36 cast members in a singing, dancing show that runs for two delightful hours.

All details in the *EASE Ticket Update*.

## Opera

### Victoria State Opera

EASE has tickets to all VSO operas in 1994. Coming up in winter are:  
*Madama Butterfly* - Puccini.

Opens on July 16.

*Il Travatore* - Verdi.

Opens on July 23

## Ballet

### The Australian Ballet

*Triple Bill* - June 2-13

*Swan Lake* - June 17-28

Details in the *EASE Ticket Update*.

## Venue Profiles

### Sandy Beach Centre

Following the venue assessment of the Sandy Beach Centre (distributed recently to EASE subscribers) we felt it would be useful to explore some other recreational aspects associated with visits to the Sandy Beach Centre.

There are a number of recreational options in the area that could make a visit to the **Sandy Beach Concerts** a good day out. There are pleasant short walks along the coastal track that runs beside the Centre. Although its dirt road of the way, its generally flat and wheelchair accessible. Those with cars could explore the beach at Black Rock.

There are also many historic homes in the Sandringham area that are open for inspection. Contact the Sandringham City Council recreation Officer or the National Trust for details.

A delectable feature of the Sandy Beach Concerts is the afternoon tea (included in the price of your ticket) which develop the flavour of the concert, with theme cakes and other goodies. In June look forward to Greek dips, vegies and bread at the Greek Taverna Concert, or salmon sandwiches and 'melting moments' at the British Empire Concert.

There is also the Centres accessible Art Gallery, which has new exhibitions fortnightly, has no entry fee and exhibits are for sale.

Sandy Beach Centre,  
Cnr Beach Rd & Sims Street,  
Sandringham. Tel: 598 2155

### Audio Description

Subscribers wishing to book Audio Description dates are advised to book well in advance. All bookings for Audio Description performances are through EASE 699 8497.

**The Sisters Rosenweig**  
*The Playhouse, Victorian Arts Centre*  
Wednesday 22 June, 1.00pm  
Saturday 25 June, 4.00pm  
Monday 4 July, 6.30pm  
Thursday 7 July, 8.00pm

**Cosi**  
Sat 18 June, 5.00pm  
(Alexander Theatre, Monash Uni)  
Sat 24 June, 1.00pm  
(George Jenkins Theatre, Frankston)

The LARGE PRINT edition of the *EASE Ticket Update*

NOW AVAILABLE. Phone or TTY Lisa on 699 8497