

Presented by Arts House and Rawcus,
as part of Dance Massive 2015

Rawcus Catalogue

Arts House, Meat Market

Tue 10 – Sat 14 March 2015

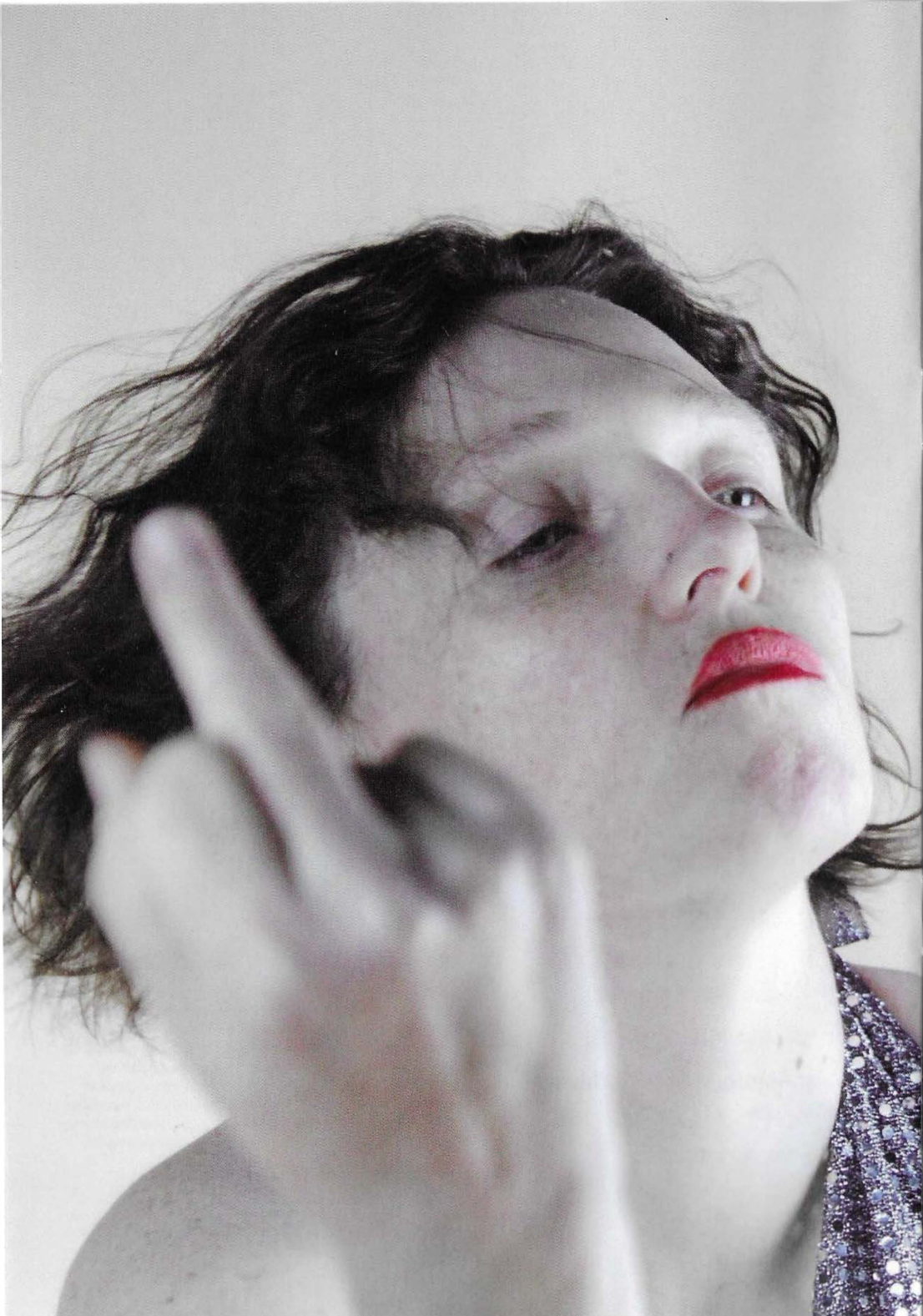
**Auslan-interpreted performance,
Sat 14, 1pm**

1hr 15min, no interval

Catalogue has been produced by Arts House and Rawcus with the support of the Australian Government through the Australia Council, its arts funding and advisory body; and the City of Melbourne through Arts House. Rawcus receives organisational support from the Victorian Government through Creative Victoria, the City of Port Phillip and Scope Victoria. Rawcus also received support for *Catalogue* from the Shulu Foundation, Besen Family Foundation, ALL BEAU Pty Ltd, Helen Macpherson Smith Trust, Arts Access Australia and Arts Access Victoria.

artshouse.com.au

rawcus.org.au



Creative Team

Director & Rawcus Artistic Director **Kate Sulan**
Co-Director **Ingrid Voorendt**

Devised & Performed by the Rawcus Ensemble
Steven Ajzenberg, Clem Baade, Hannah Bradsworth, Michael Buxton, Rachel Edward, Nilgun Guven, Mike McEvoy, Ryan New, Kerry P, Louise Riisik, John Tonso, Danielle von der Borch

Designer **Emily Barrie**
Composer & Sound Designer

Jethro Woodward
Lighting Designer **Richard Vabre**
Projection Designer **Rhian Hinkley**

Production Managers **Rose Connors Dance & Van Locker**

Assistant Sound Designer & Operator
Steph Ohara

Dramaturge **Mike McEvoy**
Stage Manager **Jess Keepence**
Assistant Stage Managers **Mary Harmer, Sarah McKenzie, David Maney**
Auslan Interpreter **Kirri Dangerfield**

Rawcus General Manager & Executive Producer, *Catalogue* **Jacque Robinson**
Consultant Producer **Alison Halit**

Image **Rhian Hinkley**

Artistic Notes

"Personality and identity are inherently multiple, defined as much by others as ourselves and the various contexts in which we live." – Gillian Wearing

"There is an intense need to be seen as individuals whilst simultaneously illustrating how shared characteristics constitute our sense of belonging within specific familial and cultural communities." – Candice Breitz

Catalogue explores portraiture and multiplicity and began as a series of simultaneous solos. We were inspired by the work of visual artists Gillian Wearing and Candice Breitz, whose work 'edits reality' and plays with identity and stereotype. Our aim was to make a work that captures the individuality, aesthetics and cultural references of each of the members of the Rawcus Ensemble. **Catalogue** has been structured from material made from improvisations and in response to performance and writing tasks. It asks the audience to follow compositional journeys and patterns rather than narratives, and to have an active role making meaning, connections and associative links between images.

We all want to belong and we also want to be unique, one of a kind. **Catalogue** explores vulnerability, exhibitionism and contradictions, playing with the faces we show to the world and revealing the people we are when we're alone in our bedrooms – with only our dreams and our favourite songs for company.

"Exactly who we are is just enough."
– Carrie Underwood, *There's a Place for Us*

Kate Sulan and Ingrid Voorendt

ARTS HOUSE

CITY OF MELBOURNE

Arts Access Victoria

CREATIVE VICTORIA

scope

Beson Family Foundation

Arts Access Australia

Arts Access Australia

Arts Access Australia

Arts Access Australia

Biographies

Rawcus

Rawcus is an ensemble of performers with and without disability. Collaborating with a core creative team led by Artistic Director, Kate Sulan, Rawcus aims to devise new work that expresses the imaginative world of the Ensemble. Rawcus fosters the creation of extraordinary theatre to fuel dreams, accumulate questions, embrace complexity, slow down time, invite reflection, challenge what is possible and celebrate humanity.

Rawcus's work has won numerous awards and has featured as part of Next Wave, Melbourne Fringe and Melbourne International Arts Festival. The group has worked collaboratively with diverse Australian arts companies including Restless Dance Theatre, Born in a Taxi, Melbourne Symphony Orchestra and Chamber Made Opera.

Steven Ajzenberg

Performer

I feel very open. I was one of the founding members of Rawcus. I am never afraid to speak out at any time. I'm a visual artist at Arts Project Australia. I'm never shy and I sort of grow with the wind.

Clem Baade

Performer

Clement Baade started his acting career at St Martins Youth Centre back in 1991 as the Director's right-hand person. He joined Rawcus in 2000. He is also a peer facilitator/performer for Fog Theatre. In the year 2010 he performed in *A Brief History of My Body* at the Victorian College of the Arts.

Emily Barrie

Designer

Emily Barrie is a Rawcus Associate Artist. Her credits include sets and costumes for Melbourne Theatre Company, the Malthouse, Belvoir Street Theatre, Full Tilt/Arts Centre, Arena Theatre Company, Back to Back, Melbourne Workers' Theatre, Ilbjerri Theatre Company, the Women's Circus, Restless Dance Theatre, NICA, Union House Theatre, Red Stitch, Melbourne Fringe, Artplay, The Spaghetti Western Orchestra, Moomba Parade, Die Roten Punkte, Federation Square, Mushroom Records and the Melbourne Museum. For Rawcus she has designed *Sideshow* (2004), *Boxset* (2004), *Not Dead Yet* (2005), *Collisions* (2005), *Rawcus at Artplay* (2006), *Hunger* (2007), *The Heart of Another is a Dark Forest* (2008), *Sticky* (2009) and *Small Odysseys* (2011). She has been nominated for several Green Room Awards for her work on shows including *Hunger* (Rawcus and the MSO/Melbourne Festival), *The Heart of Another is a Dark Forest* (Rawcus and Restless Dance Theatre) and *Small Odysseys* (Rawcus/Arts House).

Hannah Bradsworth

Performer

I am into performing arts. I've got two theatre companies – Footscray Community Arts and Rawcus Theatre Company. I have been dancing since I was in Grade 5. I'm also a hip-hop. I do hip-hop at North Melbourne Town Hall. I joined Rawcus in 2012. In 2013 I made my own hip-hop dance video called *Confessions of a Dancer*.

Michael Buxton

Performer

I'm into different theatre groups – Rollercoaster, DVA, Fog and Rawcus. I am continuing my life's work – pop music, doing my own studio and make it as my ticket dream to being a pop dance group. Michael is the main hero for the girls.

Rachel Edward

Performer

Rachel Edward is an inclusive theatre practitioner who has been involved in the arts since 1990 as a performer, writer, singer, director, production manager and filmmaker. She is dedicated to devising original work with and for people of all abilities and diverse backgrounds. She has been a performer with Rawcus since 2002 and is currently Company Manager for Rollercoaster Theatre and Support Artist/Documenter for SPARC Theatre.

Nilgun Guven

Performer

Nilgun Guven joined Rawcus in 2001 in the dual role of performer and support worker, and since 2011 is also Rawcus's Public Program Coordinator. She has co-directed several of the company's recent works: *Shadow Tales*, a partnership with Footscray Community Arts Centre's Amplified Elephants (Melbourne Festival, 2013); *Imagine Me There* (2012); *Emporium of Treasures* (Arts Victoria Extended Residencies, 2012); and *Another Lament*, a collaboration with Chamber Made Opera (2010/2012). She also curated *Portraits*, an exhibition of photography, video and installations involving guest artists, the Rawcus Ensemble and young people seven to 25 years of age, at Gasworks Arts Park. Beyond Rawcus, she is a trained audio describer and works in a variety of creative and administrative roles with other theatre companies, organisations and groups.

Rhian Hinkley

Projection Designer

Rhian Hinkley is a theatre-maker and new media artist based in Melbourne. In 2009 he formed Encyclopaedia of Animals with Christopher Brown, and in 2010 they co-directed *Urchin* at the Arts Centre, Melbourne. He is currently Artistic Director of Nebula, a portable studio/theatrical space run by Arts Access Victoria. In 2013 he co-directed the Rawcus/Art Day South work *Singular* with Kate Sulan. He has a long-standing relationship with Back to Back Theatre, creating the animated components of *Ganesh Versus the Third Reich* (2011), *Food Court* (2008) and *Soft* (2002). His film credits include *Buckstop* (1997), *Face of the West* (2000), *Pornstar* (2002) and *Boz 'n' Hok vs Theatre of Speed* (2005). Dance production credits include Trevor Patrick's *I could pretend the sky is water* (2011); BalletLab's *Origami* (2006); Sandra Parker's *Out of Light* (2009), *Transit* (2010), *Document* (2011) and *The Recording* (2013); and *Aorta*, by Stephanie Lake for Chunky Move (2014).

Mike McEvoy

Performer/Dramaturge

Mike McEvoy has been a Rawcus Ensemble member since 2007. He is also Artistic Director and ensemble member with Melbourne Playback Theatre, performing regularly throughout Australia within the corporate, community and education sectors. Other credits as a performer and theatre-maker include *She's Not Performing*, *The Time Is Not Yet Ripe* and *Tyranny* (La Mama); *White With Wire Wheels* (UHT); and *Ivanov* (fortyfivedownstairs). Most recently he devised and performed *Two Mortals* with Rachael Dyson-McGregor, in two sold-out seasons at La Mama (2013/2014). *Two Mortals* will tour to Wellington in April 2015. Mike McEvoy is an Honours Graduate from the School of Creative Arts, VCA.

Rawcus

Rawcus is an ensemble of performers with and without disability. Collaborating with a core creative team led by Artistic Director, Kate Sulan, Rawcus aims to devise new work that expresses the imaginative world of the Ensemble. Rawcus fosters the creation of extraordinary theatre to fuel dreams, accumulate questions, embrace complexity, slow down time, invite reflection, challenge what is possible and celebrate humanity.

Rawcus's work has won numerous awards and has featured as part of Next Wave, Melbourne Fringe and Melbourne International Arts Festival. The group has worked collaboratively with diverse Australian arts companies including Restless Dance Theatre. Born in a Taxi, Melbourne Symphony Orchestra and Chamber Made Opera.

Steven Ajzenberg

Performer

I feel very open. I was one of the founding members of Rawcus. I am never afraid to speak out at any time. I'm a visual artist at Arts Project Australia. I'm never shy and I sort of grow with the wind.

Clem Baade

Performer

Clement Baade started his acting career at St Martins Youth Centre back in 1991 as the Director's right-hand person. He joined Rawcus in 2000. He is also a peer facilitator/performer for Fog Theatre. In the year 2010 he performed in *A Brief History of My Body* at the Victorian College of the Arts.

Emily Barrie

Designer

Emily Barrie is a Rawcus Associate Artist. Her credits include sets and costumes for Melbourne Theatre Company, the Malthouse, Belvoir Street Theatre, Full Tilt/Arts Centre, Arena Theatre Company, Back to Back, Melbourne Workers' Theatre, Ilbjerri Theatre, Company, the Women's Circus, Restless Dance Theatre, NICA, Union House Theatre, Red Stitch, Melbourne Fringe, Arplay, The Spagheti! Western Orchestra, Moomba Parade, Die Roten Punkte, Federation Square, Mushroom Records and the Melbourne Museum. For Rawcus she has designed *Sideshow* (2004), *Boxset* (2004), *Not Dead Yet* (2005), *Collisions* (2005), *Rawcus at Arplay* (2006), *Hunger* (2007), *The Heart of Another is a Dark Forest* (2008), *Sticky* (2009) and *Small Odysseys* (2011). She has been nominated for several Green Room Awards for her work on shows including *Hunger* (Rawcus and the MSO/Melbourne Festival), *The Heart of Another is a Dark Forest* (Rawcus and Restless Dance Theatre) and *Small Odysseys* (Rawcus/Arts House).

Hannah Bradsworth

Performer

I am into performing arts. I've got two theatre companies – Footscray Community Arts and Rawcus Theatre Company. I have been dancing since I was in Grade 5. I'm also a hip-hopper. I do hip-hop at North Melbourne Town Hall. I joined Rawcus in 2012. In 2013 I made my own hip-hop dance video called *Confessions of a Dancer*.

Michael Buxton

Performer

I'm into different theatre groups –

Rollercoaster, DVA, Fog and Rawcus. I am continuing my life's work – pop music, doing my own studio and make it as my ticket dream to being a pop dance group. Michael is the main hero for the girls.

Rachel Edward

Performer

Rachel Edward is an inclusive theatre practitioner who has been involved in the arts since 1990 as a performer, writer, singer, director, production manager and filmmaker. She is dedicated to devising original work with and for people of all abilities and diverse backgrounds. She has been a performer with Rawcus since 2002 and is currently Company Manager for Rollercoaster Theatre and Support Artist/Documenter for SPARC Theatre.

Nilgun Guven

Performer

Nilgun Guven joined Rawcus in 2001 in the dual role of performer and support worker, and since 2011 is also Rawcus's Public Program Coordinator. She has co-directed several of the company's recent works: *Shadow Tales*, a partnership with Footscray Community Arts Centre's Amplified Elephants (Melbourne Festival, 2013); *Imagine Me There* (2012); *Emporium of Treasures* (Arts Victoria Extended Residencies, 2012); and *Another Lament*, a collaboration with Chamber Made Opera (2010/2012). She also curated *Portraits*, an exhibition of photography, video and installations involving guest artists, the Rawcus Ensemble and young people seven to 25 years of age, at Gasworks Arts Park. Beyond Rawcus, she is a trained audio describer and works in a variety of creative and administrative roles with other theatre companies, organisations and groups.

Rhian Hinkley

Projection Designer

Rhian Hinkley is a theatre-maker and new media artist based in Melbourne. In 2009 he formed *Encyclopaedia of Animals* with Christopher Brown, and in 2010 they co-directed *Urchin* at the Arts Centre, Melbourne. He is currently Artistic Director of Nebula, a portable studio/theatrical space run by Arts Access Victoria. In 2013 he co-directed the *Rawcus/Art Day South* work *Singular* with Kate Sulan. He has a long-standing relationship with Back to Back Theatre, creating the animated components of *Ganesh Versus the Third Reich* (2011), *Food Court* (2008) and *Soft* (2002). His film credits include *Buckstop* (1997), *Face of the West* (2000), *Pornstar* (2002) and *Boz 'n' Hok vs Theatre of Speed* (2005). Dance production credits include *Trevor Patrick's I could pretend the sky is water* (2011); Balletlab's *Origami* (2006); Sandra Parker's *Out of Light* (2009), *Transit* (2010), *Document* (2011) and *The Recording* (2013); and *Aorta*, by Stephanie Lake for Chunky Move (2014).

Mike McEvoy

Performer/Dramaturge

Mike McEvoy has been a Rawcus Ensemble member since 2007. He is also Artistic Director and ensemble member with Melbourne Playback Theatre, performing regularly throughout Australia within the corporate, community and education sectors. Other credits as a performer and theatre-maker include *She's Not Performing*, *The Time Is Not Yet Ripe* and *Tyranny* (La Mama); *White With Wire Wheels* (UHT); and *Ivanov* (fortyfivedownstairs). Most recently he devised and performed *Two Mortals* with Rachael Dyson-McGregor, in two sold-out seasons at La Mama (2013/2014). *Two Mortals* will tour to Wellington in April 2015. Mike McEvoy is an Honours Graduate from the School of Creative Arts, VCA.

Ryan New
Performer

Ryan New started theatre in 1994 in a dance theatre company, Isolation, and improved his career of the arts in 2000 for a primary school project called *cineralla rock* as a dancer. He then began doing Certificate 1 in Live Theatre and Events, a.k.a. Ignition Theatre, starring as Blackie in *Double Trouble* and the beast in *Love Lost Sailing* in 2006. He became a pick in Platform Youth Theatre for a production *Golem from Rucker's Hill*, as four different characters, the following year. He made his debut in Rawcus in mid-2008. His work includes techie/crowd control for Club Wild, Assistant Stage Manager for Ignition (2007–12), Weave (since 2007), a self-production, *What's the Time Mr Wolf*, another theatre group in Caroline Springs, Rollercoaster, and the arts of Australian stage fighting.

Kerryn Poke
Performer

Age 34, I came from Davenport, Tassie, 1980, when Mum had me. I joined Rawcus in 2003. I held a little house – *Small Odysseys* (2011). *Dark Forest* (2008). 2012 Newham workshop doing a good job. Graduation Ignition Theatre Training (2003). I ran a belly dance workshop at Newham. I am an actress. I became John Farnham's Fan Club member. Since 2013 I went to my friend's wedding.

Louise Riisik
Performer

I've been with Rawcus since it started and that is a long time. I love performing with the group and acting and exciting stuff. I like to encourage people to do more stuff like acting and courage, like me. I like dancing to music because everybody does I guess. At Rawcus I'm happy here with friends. Pink is a better singer than Cyndi Lauper and she can dance more.

Kate Sulan
Director

Kate Sulan is the founding Artistic Director of Rawcus, directing all the major works for the company. A long-term collaborator with Back to Back Theatre, she worked as a deviser for *Ganesh Versus the Third Reich*, and has toured with the work as show director to over 14 cities worldwide. She was dramaturge for Back to Back's *Super Discount* (STC, Malthouse), and directed Maryanne Lynch's *Happiness* (2010/11) and Declan Greene's *Tame* (2012/13) for Malthouse Theatre's Suitcase Series. In 2010 she created a work in Ahmedabad, India, as part of an Asialink performing arts residency. The work was a collaboration between Darpana Performing Arts Academy and performers from Apang Manav Mandal, a home for girls with physical disability. Kate Sulan is also a former board member of Next Wave (2006–14).

John Tonso
Performer

Otherwise known as Tonso. Joined in 2004. His highlights include collaborations with Born in a Taxi and the MSO. He went on to perform with Nick Papas at La Mama. Tonso was also a member of DVA Theatre Company. In football, Tonso barracks and owns merchandise for all teams, ensuring football itself is indeed the real winner. Thank you for coming.

Richard Vabre
Lighting Designer

Freelance lighting designer Richard Vabre has lit productions for MTC, STC, Malthouse Theatre, Victorian Opera, Windmill Theatre, Arena Theatre Company, NICA, Darwin Festival, Stuck Pigs Squealing, Chamber Made Opera, Rawcus, Red Stitch, Polyglot, Melbourne Workers' Theatre and Aphids; and many, many productions at La Mama. He has won four Green Room Awards, including the Green Room Association's John Truscott Prize for Excellence in Design (2004). He has been nominated for a further six Green Room Awards. He is a Rawcus Associate Artist.

Ingrid Voorendt
Co-Director

Ingrid Voorendt is a director, choreographer and dramaturge. She specialises in creating and directing collaboratively devised, interdisciplinary performance, and has collaborated on more than 30 new Australian works. She is a former artistic director of Restless Dance Theatre, where she has a long history as a director, and has been a regular guest artist with Rawcus since 2004. She co-directed the Rawcus/Restless co-production, *The Heart of Another is a Dark Forest* (2008). She has a distinctive choreographic sensibility and an interest in creating participatory experiences; and holds a Master of Animateuring (Theatre, by Research) from the VCA.

Danielle von der Borch
Performer

Danielle von der Borch joined Rawcus in 2009, and has performed in *Small Odysseys* (2011) and *Shadow Tales* (2013). She is a community arts practitioner, performer, teacher/facilitator and community development worker. She graduated from the VCA's drama school, and also holds a Grad. Dip. in movement and dance from the University of Melbourne and an MA in experiential and creative art therapy from the Miecatt Institute. For the past 14 years she has worked at The Venny Inc, a communal backyard where she spends a lot of time playing with kids and young people. This work involves being present to vulnerable and 'at risk' kids and young people in an environment of support and care. Here she brings a synthesis of both art and play to the sessions she runs. She is also a sessional staff member at Miecatt Institute. "My attempt to notice and bring awareness to the everyday relational experience is what grounds my interest in embodied practices, performance, teaching and community work."

Jethro Woodward
Composer & Sound Designer

Jethro Woodward is a Melbourne-based composer, musician and sound designer recognised for his expansive and highly layered film, theatre and dance scores. A multiple Green Room Award winner and nominee, he has worked with leading Australian companies including MTC, Malthouse Theatre, Belvoir Company B, Arena, Windmill, MSO, Rawcus, Stuck Pigs Squealing, Fragment31, Lucy Guerin Inc, Australian Dance Theatre and KAGE. He has won Green Room Awards for his work on *Moth* (Malthouse/Arena), *Goodbye Vaudeville Charlie Mudd* (Malthouse/Arena) and *Irony Is Not Enough* (Fragment31). He was Music Director and Sound Designer for the six-Helpmann-Award-nominated musical, *Wizard of Oz* (Windmill). He is a Rawcus Associate Artist and has been composer and sound designer for Rawcus productions including *Sideshow* (2004), *Boxset* (2004), *Not Dead Yet* (2005), *Collisions* (2005), *Hunger* (2007), *The Heart of Another is a Dark Forest* (2008), *Small Odysseys* (2011) and *Another Lament* (2010/2012).



Thank You

This year, during the lead-up to **Catalogue**, both directors have welcomed new children into their families. We'd like to thank our families, Rawcus, and everyone involved in the show for their incredible support during this time.

Thank you also to Angharad and all at Arts House, Angela Pamic, Dom Reilly, Mitali Reilly, Joyee Reilly, Leon Koomen, Edith Koomen, John Farnham, Gwyneth Paltrow, Rinske Ginsberg, Lorcan Hopper, Back to Back Theatre, Georgia and Joe Vabre, Baird at Malthouse Theatre, Maye at Resolution X, Darren at LX Productions, Anne Robinson, Jessica Stainton, Annie Apple Emery, Alex Edward, Hermione and Vincent Merry, Paul Matley, Jess Kapuscinski-Evans, Harriet Devlin, Sarah Wilmot, Andrew Van Gough and Sarisse, Joshua Lynzaat, Boris Harrod, Sophia Constantine, Duane Wilks, Larelle Kearney, Katrine Gabb, Ian Michael, Kylie and Sharyn, Michelle Wilcox, Shehan Liyanage, Jo Dunbar, Nick Hays, Meg Upton, Cath Smirnoff, Josh Wright, Phip Murray, Katie Parker, Cara Hughes, Trevor Matthews, Rob Irwin, Rob McKenzie, Alison Smirnoff, Andrew Tranter, Barbara Ajzenburg, Emel O'Dwyer, Anna Schlusser and Peter de Weidjer.

Arts House

Arts House presents contemporary arts in programs encompassing performance, festivals, live art, residencies and other activities that nurture, support and stimulate cultural engagement. We value work in which artists at different stages of their careers, as well as our diverse audiences and communities, are actively involved in creating an imaginative, just and environmentally sustainable global society.

Arts House's programs include two curated public seasons of multidisciplinary work each year. Approximately half of this work is selected through an Expression of Interest process. We seek artists who are responding to the urgent issues of our time in imaginative and surprising ways, taking artistic risks and offering multiple ways for audiences to engage with or co-author their work.

For more information, please contact us on the details below.

521 Queensberry Street
North Melbourne VIC 3051
(03) 9322 3720
artshouse@melbourne.vic.gov.au
artshouse.com.au

ARTS HOUSE

