

Annual Report

21st Anniversary Year 1995



ARTS
Access

SF
790.19606
AR7



A Vision for Victoria

The World's Most Accessible Centre of Culture

Mission

Arts Access creates opportunities for all people to fully participate in the cultural and artistic life of the community.

This vision of equal access, choice and active participation is being achieved in partnership with people with disabilities and people disadvantaged by social conditions and through leadership in the broader arts community.

Arts Access is achieving this mission through:

• Leadership

By being an active leader in the arts in creating awareness of the cultural rights of people with disabilities and people experiencing social disadvantage.

• Programs

By developing new initiatives and extending existing programs for people to participate in, create and access the arts.

• Profile

By being acknowledged as a leading arts organisation that is integral to Victoria's cultural life.

• Technology

By being in the forefront of the application of information technologies in our field.

Arts Access is an independent, not-for-profit arts organisation supported by federal and state governments, business, philanthropic and private sponsors, memberships and user contributions. Additionally, the **Arts Access Trust** is building an ongoing, independent source of income for future administration, research, and pilot projects.

Arts Access manages three core programs

■ **The Artistic Program** initiates practical arts projects in diverse community settings, working with all forms of the arts to develop the artistic, social and physical skills of participants and to promote their personal well-being. The priority is for pilot and model projects to be developed to the stage of independent management.

■ **The Entertainment Access Service (EASE)** develops equal access to arts, entertainment, sporting and other cultural events in partnership with its subscribers and supporters. The *EASE Ticket Service* provides subscribers with low cost tickets and a specialised seating service covering a broad range of events. The *EASE Venue Access Program*, promotes best practice in access through the *Melbourne Venue Guide*, and cultural industry awards to recognise best practice in access, services and facilities. The *EASE Industry Development Program* provides information,

training and consultancy to Victoria's cultural industries to raise awareness of disability issues and assist managers to develop action plans in line with the Disability Discrimination Act (DDA)

■ **Library & Information Services** and the **Training Program** provide organisations and individuals with information resources and skills training to assist the independent establishment and management of arts programs in the community.

Arts Access projects involve a wide range of participant groups & community settings including people with physical, sensory, intellectual or psychiatric disabilities; people receiving hospital care; drug and alcohol rehabilitees; homeless or at-risk young people; young people in remand or training centres; prisoners; elderly people in nursing homes; isolated residents in supported accommodation; and groups promoting public health issues ...and use all forms of the Arts including environmental design, dance, drama, drawing, film, movement, music, oral history, painting, photography, printmaking, radio, reminiscence, sculpture, textiles, video, writing, and many others.

Arts Access also

- ◆ Operates programs within metropolitan Melbourne and regional Victoria, with aspects of its work leading to interstate and international ventures.
- ◆ Educates arts, health, community services workers and the general public in the creative potential and rights of special needs groups;
- ◆ Promotes the professional development of artists disadvantaged by disability or social conditions through access to training and resources;
- ◆ Contributes to cultural diversity by assisting all people to participate in cultural activity and by stimulating new arts and recreation choices;
- ◆ Is an independent advocate on issues of access to cultural expression for special needs groups;
- ◆ Liaises on policy development with government, the arts industry and cultural bodies;
- ◆ Develops national networks of arts and recreation organisations.
- ◆ Acknowledges the diversity of individual ability and cultural practice; and acknowledges that the terms 'disability' and 'disadvantage' reflect physical, cultural, social and economic values.
- ◆ Believes true access in the arts requires physical access to built environments, appropriate means of public transport, and opportunities for participation in the fields of education, recreation and public entertainment at all levels.



Patron's Message

It was fitting that Arts Access celebrated its 21st Birthday in 1995. This is a traditional milestone for a young person making the transition to independence and greater responsibility in the community. It draws our attention to the future, the potential that lies within and the great things that await to be achieved.

Arts Access can be thought of as just such a person, one whose vision and commitment to the most disadvantaged people of Victoria also serves to improve the quality of life for us all.

In April, I was very proud to host, with my husband, the Hon. Richard McGarvie, Governor of Victoria, a special reception at Government House to celebrate Arts Access' many achievements since 1974.

I look forward to an exciting future for Arts Access, to seeing the fruit of its planning, its advocacy and the many exciting arts projects developed in 1995.



Lesley McGarvie

Lesley McGarvie
PATRON.

Contents

The Organisation

Mission	2
Patron's Message	3
1995 Highlights	4
President's Report	4
Executive Director's Report	5
Arts Access Society Inc. 1994	6
- Organisational Chart	7
- Staff 1995	7
Performance & Participation Profile	8
Strategic Planning	9
Administration	9
Major Programs	
The Artistic Program	10 - 13
DADAA Network	13

EASE - the Entertainment Access Service	14 - 16
Training Program	17 - 19
Library & Information Services	20 - 22
Arts Access Studio	22
Financial Reports	
Arts Access Trust Appeal	23
Income & Expenditure	24
Application of Grants	24
Balance Sheet	25
Audit Opinion	25
Statement of Cash Flows	26
Notes on the Accounts	26
Acknowledgments	27
Membership & Donations	Back Cover

President's Report

As with previous years, 1995 proved to be a year of challenges and achievements for Arts Access. A highlight in April was the celebration of our 21st anniversary, marked by a reception at Government House hosted by His excellency, Mr Richard McGarvie, and our Patron, Mrs McGarvie. It was a wonderful evening, giving us the chance to renew old acquaintances, to thank our loyal supporters and to welcome new friends.

1995 was a year of intensive planning and development, hard work and hard decisions. Constraints on our funding demanded careful management of resources and awareness of the need for all our program to generate income for the organisation. Particularly important was Arts Access' developing role in training in all aspects of disability and the arts - for venue managers and operators, community services staff and support workers, artists and students.

EASE had its most active year to date with record ticket sales, increased training and consultancy opportunities, and the commencement of a major new initiative, the Venue Access Program, which will introduce a new venue guide, a system of venue accreditation, and Access Awards in the coming years.

The State Government's continuing policy of deinstitutionalisation places great demands on community support systems. I am particularly proud of the way our artistic programs responded to these challenges, developing and delivering programs of the highest standards to individuals and group in supported accommodation, training programs and other community settings.

The strength and success of Arts Access is to be found in the talent and commitment of the people involved in our work - staff, volunteers, board and committee members, client organisations and program participants, and of course the artists. My thanks to you all. In particular, I wish to acknowledge and thank Vivian Carroll who leaves us at the end of January 1996. Viv has made an outstanding contribution to Arts Access in promoting the organisation, its work and its aspiration to the wider community. We will greatly miss Viv and wish him well for the future.

1996 will be a year of opportunity for growth and development, and I look forward to working with all of you in fully realising these opportunities.



SF
790.19606
AR 7



ABOVE: Victoria's Health Minister, Marie Tehan (centre) with 'Healthy Arts' author and artist, Sally Marsden (left).

RIGHT: Andrew Denton had sign interpreter, Debra Lummis in a tangle at the EASE launch.



1995 Highlights

- The launch in March of the new EASE program structure by the Victorian Minister for the Arts, the Hon Haddon Storey.
- Record annual ticket distribution figure for EASE.
- The launch of Andrew Denton as public EASE Supporter, featured in a new EASE promotional brochure.
- Establishment of the EASE Industry development program with the Arts 21 Leadership Program of Arts Victoria
- Establishment of the EASE Venue Access program with a \$50,000 two year sponsorship from VicHealth
- Celebration, in April, of Arts Access' 21st Anniversary at a Government House reception hosted by the Governor of Victoria and involving over 140 guests representing Arts Access and a broad cross section of the Victorian arts industry.
- Development of the national visual arts exhibition *Body Suits* funded by Visions of Australia
- Australia Council Grant increased and set on three year funding basis.
- Australia Council funds the Cultural Exchange Program to send two Arts Access artists to work in China in 1996.
- Consolidation of the Training Program
- Arts Access Strategic Futures Conference
- Establishment of an Arts Access homepage on the Internet

Executive Director's Report



In the future when we look back to 1995, I am sure we will recognise it as a pivotal year for the organisation. For not only was it the 21st Anniversary of the foundation of Arts Access, it was a year of major review, consolidation, planning and the laying of important foundations with the establishment of new programs.

Arts Access has joined the Information Age with a strong presence on the Internet, thanks to the initiative and hard work of Carol Downey our Information Services Officer and volunteer, Neil Blenkiron whose skills have been crucial in creating our first homepage. and planning new online information services.

The planning undertaken in 1994 with the Entertainment Access Service has paid major dividends.

1995 saw the very public launch of two new programs within EASE - the Venue Access program funded through multi-year sponsorship from the Victorian Health Promotion Foundation, enabling the production of comprehensive Access Guide to Melbourne Venues and the establishment of the EASE Awards Program; and the Industry Development Program, funded through the Leadership Program of Arts Victoria to present an arts industry training on disability awareness and the Disability Discrimination Act.

There were also major developments in the Artistic Program in 1995. We completed the development phase of *Body Suits*, a national touring visual arts exhibition which is planned for 1996. This stage of the project was funded through Visions of Australia.

Funding was secured for the Cultural Exchange program which will see two artists working in China in partnership with Chinese disability organisations in Jilin and Jiangsu Provinces in mid 1996.

We have established a major Art & Health Program which builds on many of the extraordinary, innovative work

that has been achieved over the years with Arts Access projects within health settings.

A major development in our Training Program was the innovative Arts Bridging Course conducted at Swinburne University of Technology, designed to provide a pathway for people with physical disabilities into tertiary training.

Julie Melia, who joined us in 1995 under the Teacher Release to Industry did an excellent job in expanding the scope of the Training Program. Arts Access is now a registered private provider of training.

All of the developments owe an enormous amount to the strategic planning process Arts Access has been undergoing since 1994.

In July the Strategic Futures Conference which was facilitated by Colin Pidd and Miriam Bass began a rigorous process that will continue through a number of special working groups.

I would like to thank everyone who has contributed to the planning process, in particular I would like to acknowledge the enormous contribution made by Miriam in taking the organisation through such a difficult process.

Whilst 1995 has been a very rewarding year it has not been without its challenges. Finance remained a major issue despite small increases in our core funding and our financial situation has necessitated some difficult decisions. Most difficult being the discontinuation the position of Public Affairs Manager.

It will, quite simply, be impossible to replace Vivian and I am extremely grateful for his very considerable contribution, on so many levels, to the organisation.

I would like very much to thank everyone: program participants, staff, committee members, artists, volunteers, supporters and members who have given so much of themselves to Arts Access over the last 12 months.

I look forward to your continuing support over the next year as we see more of the plans we have developed during 1995 take shape, and we come closer to realising our goal of cultural access for everyone.



Helen Bowman
Helen Bowman
Executive Director

Arts Access Society Inc. 1995

Committees

Management Committee

President:
Judy Morton

Senior Vice President:
Alan Moor

Junior Vice President:
Miriam Bass

Treasurer:
Isi Plack

Secretary:
Mark Williams

Members:
Lynne Bell (to April 94)
Robin Charwood (from May '95)
Jan Doran (from May '95)
Peter Hengstberger
Jo Raphael (from May '95)
Laurie Reilly
Margaret Woollard (from May '95)
Gavin Wright (from May '95)
Rita Zammit (to May '95)

Finance Consultant:
John Paxinos

Finance Committee
Patrick Burroughs
Bryce Hamley
Isi Plack
Laurie Reilly

Arts Access Trust Appeal Committee
Patron:
Dame Elisabeth Murdoch AC

Chairman:
Creighton Burns AO

Fundraising Consultant
Helen Woods,
The Strategy Team

Legal Adviser
Elizabeth McCallum (Corrs
Chambers Westgarth)

Members:
Patrick Burroughs
Diana Downie
Ian Haig
Alan Moor
Judy Morton
Isi Plack

Arts Access Trust Advisory Committee
Creighton Burns AO
Diana Downie
Bryce Hamley
Judy Morton
Laurie Reilly FCA
H.E.P. Steel LLB, BCom

EASE Advisory Committee:
Jan Doran
Warwick Cavanagh
Kathie Massey
Miriam Bass

EASE Consumers Group
Alan Dunsmuir
Irene Dunsmuir
Jane Trengove
Liz Cooper
Isobel Barnard
Kerry-Ann Landsman
Sam Winstanley
Peter Dymond
Diana Ciavarella
Diana Vella
Brenda Hutchinson-Brooks

EASE Melbourne Venue Guide Project Officer:
Lisa McKoy (from Oct '95)

Auditor
John Waters FASA, FCPA, FCIM

Honorary Solicitor
Henry EP Steel LLB, B.Comm

Honorary Financial Adviser
Bryce Hamley

Honorary Property Adviser
John Coe

Bankers
ANZ Executors & Trustees
Commonwealth Bank

Macquarie Investment
Management Ltd

Staff

Executive Director:
Helen Bowman

Artistic Program Manager:
Bobbie Hodge

Public Affairs Manager:
Vivian Carroll

Administrator:
Rhona Bester

Administrative Assistant:
Samantha Marsh

EASE Program Manager:
Dean Michael

EASE Ticketing Co-ordinator:
Lisa McKoy (to Dec '95)
Rochelle Brown (from Oct '95)

EASE Melbourne Venue Guide Project Officer:
Lisa McKoy (from Oct '95)

Training Program Coordinator
Julie Melia

Information Services Officer:
Carol Downey

Co-ordinator, Art Day Programs:
Barbara Doherty

Co-ordinator, SRS Program:
Jedda Bellham

DADAA National Co-ordinator:
Jane Trengove

Trainee Arts Project Officer:
Colin McKinnon (to May '95)

Support Workers:
Dee Buman
Mary Carlson
Janine Cording
Fran Kelson
Chris Lambert
Eva Marks
Mary Mormile

Program Artists:
See listings under Artistic
Project Details and Training

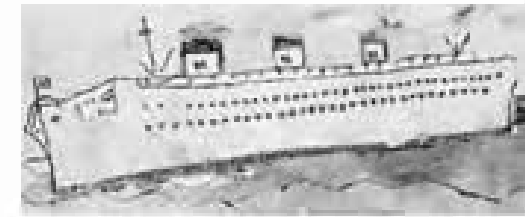
Trainees:
Roisin Johnson (CAP Scheme)
Rochelle Brown
Katherine Allison (from Dec '95)
Rishi Kashyap (from Dec '95)

Student Placements:
Ryan Lewis
Simone Masenhelder
Helen Tran

Volunteer Office Assistants:
Neil Blenkiron
Yann Dunlop
Roisin Johnson
Angie Joost
Simone Masenhelder
Jackie Newton
John Pidd
Gaye Walsh
Nerida Weller

EASE Volunteer Assistants:
Peter Dymond
Roisin Johnson
Mary Brogan
Jean Monroe
John Pidd
NADRASCA Volunteers

Cleaner/Handyman:
Garry Morgan



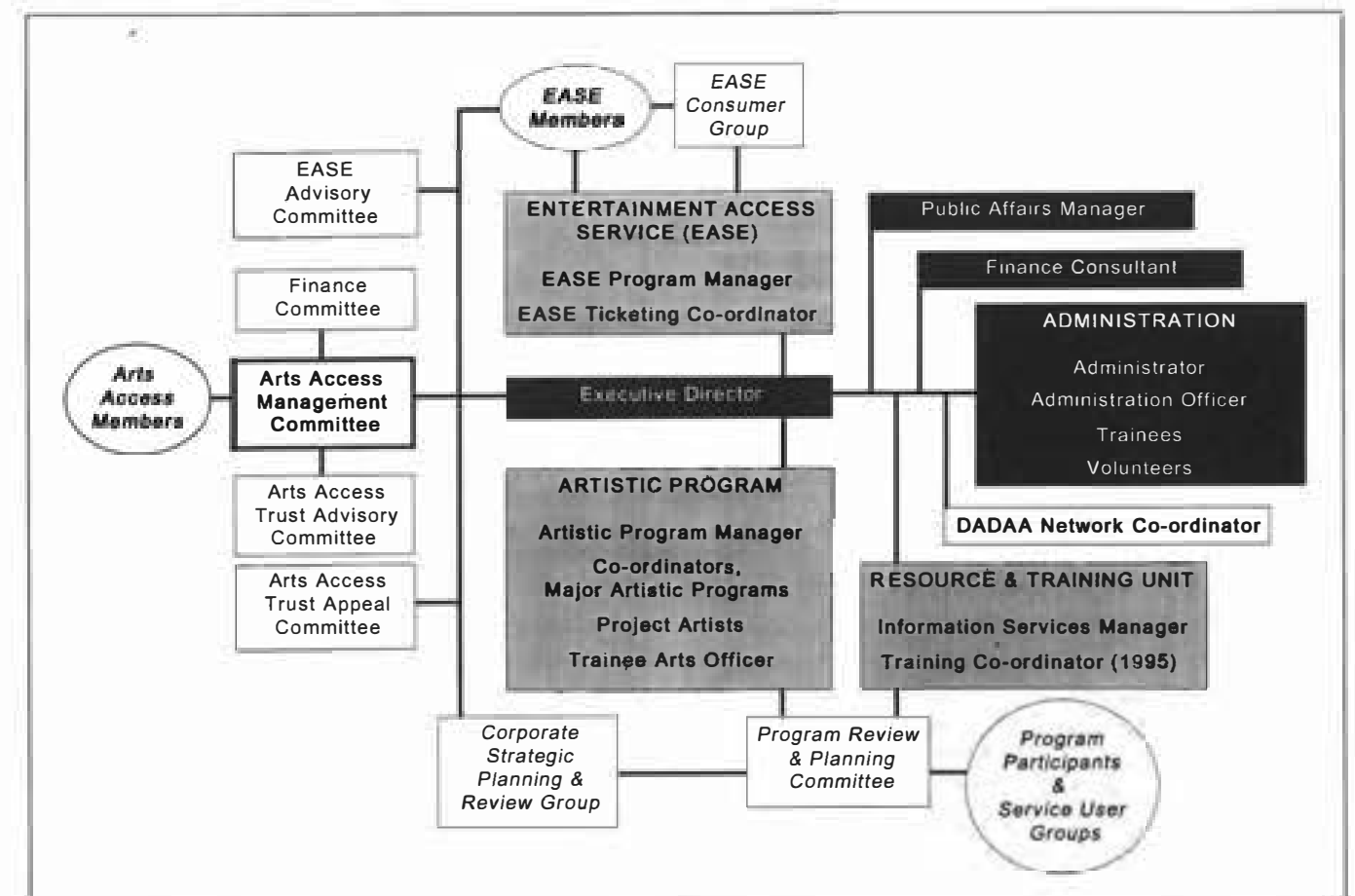
Staff 1995



Arts Access Staff 1995.
Back row from left: Vivian Carroll (Public Affairs Manager), Julie Melia (Training Program Coordinator), Helen Bowman (Executive Director), Rishi Kashyap (Trainee, from December 1995), Jane Trengove (DADAA Network Coordinator), Rochelle Brown (EASE Ticketing Co-ordinator), Carol Downey (Library & Information Services Officer). Front row from left: Dean Michael (EASE Program Manager), Bobbie Hodge (Artistic Program Manager), Lisa McKoy (EASE Venue Guide Project Co-ordinator), Samantha Marsh (Administration Assistant), Rhona Bester (Administrator), Simone Masenhelder (Student Placement & Volunteer). Front: Barbara Doherty (Coordinator, Art Day Programs).

Full staff list appears on page 6.

Organisational Chart





LEFT: End of year celebrations in Dingley for the Art Day Program, Southern Region.

1995 Performance & Participation Profile



ABOVE: The Supported Residential Services (SRS) Program Concerts brought music song and celebration to residents of SRS residents in the Prahran and Malvern areas.

Participant Profile - all programs

	1995	1994
Intellectual Disability	1137	1,607
Psychiatric Disability	1858	2,039
Physical Disability	2190	2,244
Aged	804	298
Sensory (vision/hearing impaired)	1262	1,000
Multiple Disability	81	8
Social Disadvantage	4331	3,864
Youth	4610	4,047
Chronic Illness	183	55
Drug & Alcohol	270	335
Women (via womens services)	861	-
Other (Staff/Students/Audiences)	3605	4,392
Total Participants	21,192	19,889
	17,574	(1993)
	19,109	(1992)
	15,256	(1991)

Artistic Program

	1995	1994
No. of projects	27	27
No. of project weeks	259	361
No. of direct participants	623	563
Other participants (support staff/audiences)	1418	2570
No. of project artists employed	49	49
(Equivalent Fulltime Employment)	5.8	5.5

EASE - Entertainment Access Service

EASE Ticket Service

Total tickets distributed	18,848	15,180
(10% of tickets to support workers/companions)	1,884	1,518
No. Subscribers	436	*398
- Organisations	181	*173
- Individuals	255	*225

EASE Industry Development Program

Training participants	50	37
No. of Training Workshops	4	2
No. of Student hours	325	167

EASE Venue Access Program

Consultancies	6	10
Advocacy		
Forums/public presentations	4	5
General enquiries	4500	4700

Information Services

Manager on site - days per week	2	3
Visits and serviced enquiries	384	450
New titles	154	184
Consultations	7	15
Groups (tertiary students)	12	14
- No. participants	103	118
Research/Development Projects	2	-

Training Program

Training participants	149	186
Funded modules/courses	3	-
No. workshops	12	12
No. training workshop days	26	21
No. student hours	30,396	23,436
No. artists/ trainers employed	12	12

Arts & Community Sector Support

Committees (No.)	11	11
Networks (No.)	9	10
External Arts Management & Consultancy (hours)	880	840
General Enquiries (No.)	8315	8280

Administration

Trainees	6	3
Volunteer Placements	20	19

* Figures amended since 1994 report to reflect 1995 criteria

Strategic Planning

Towards a Vision for Victoria



Above: Sharing their vision for Arts Access were over 70 staff, volunteers, supporters, program participants, members, committee representatives and peer colleagues. From centre (clockwise): Lisa McKoy, Jenny McCarthy, Isi Plack, Gavin Wright, Julie Melia, Stephen Costello, Hilary Ash, and Pamela McClure

Appropriately, in Arts Access' 21st Anniversary year, the entire organisation focussed considerable energy on planning and strategically developing its vision for the future.

A rigorous, long term, strategic planning process was initiated in June at the Arts Access Strategic Futures conference, led by consultants, Colin Pidd and Miriam Bass.

Over 70 stakeholders in Arts Access (including committee members, artists, staff, program participants and supporters) contributed to developing a common integrated vision for the organisation and its role in both 'the arts' and 'access'. The group looked first at our mission then the primary strategic objectives by which we will achieve that mission, and the 'critical success indicators' that will provide an ongoing measure as to how well we are performing in relation to the objectives.

The final stage was the identification of key actions, who is responsible for each, and the setting of a clear time frame for implementing this collectively developed plan. The key strategic actions are published on the inside front cover with our revised mission statement. The actions also include: securing the organisation's long term financial viability; locating Arts Access purpose designed premises with room for growth over 10 years; and the encouragement of an interdependent organisation that values and develops its people.

By the end of the year, the key objectives and actions set for Arts Access were translated into an exciting Vision for Victoria as 'The World's Most Accessible Cultural Centre'.

This leading aim will be promoted to governments, corporate supporters and community groups from 1996. This visionary goal has the potential to create new partnerships that will work to build a model for cultural access that can be adopted across the broader community and internationally.

Administration

The skill and experience of the Administration team is crucial to continuing the high standard of professional arts management practised by Arts Access.

Administrator, Rhona Bester works closely with a team of staff, volunteers and trainees to provide effective financial management and support for the entire organisation. Apart from day to day financial management and record keeping, Rhona supports the administration of the Arts Access Trust Appeal, and over several years has developed the role of Volunteer Co-ordinator.

Arts Access Administration Assistant, Samantha Marsh balances many roles: receptionist, assistant to the Executive Director, co-ordination of the Arts Access Studio and the *Arts Update* bulletin, and support to the Administrator in the training and co-ordination of volunteers.

Arts Access could not function without the vital support of volunteers and students on placement. In return Arts Access provides skills development and training opportunities that will enhance future employment or training prospects

1995 Developments

- Installation of an upgraded and integrated computer network.
- The development of a comprehensive computer strategy in liaison with computer systems consultant, Graham Thorn.
- Research into current and future data management needs. A computer programmer will be sought to develop a customised data base during 1996.
- Conducted an environmental assessment of Arts Access' premises. This provided options for cost reduction through energy saving.
- Introduced an induction and orientation program for new staff, committee members and volunteers.
- Reviewed, updated and formalised all office procedures.
- Implemented a Universal Precautions Policy (to address the need for safe management of body fluids) for project artists and office staff.



LEFT: Administrator, Rhona Bester and Administration Assistant, Samantha Marsh lead a dedicated team providing professional and volunteer support for Arts Access Programs.



Artistic Program



Working across a wide range of art forms, participant groups and settings, the Arts Access Artistic Program managed 27 practical artistic projects in 1995, including major ongoing programs and short term projects.

The Artistic Program employs a diverse range of professional artists with a unique capacity to generate the energy and joy of the creative process and encourage the development of new skills.

Artistic Program Manager, Bobbie Hodge also assists and advises organisations, communities and artists throughout Victoria on a wide range of cultural development issues including project funding, development and planning, project management, and guidance with creative personnel.

Highlights of the 1995 program included: the move by the Supported Residential Services (SRS) Arts Program to the Prahan/Malvern area; a new SRS Arts Program serving people in the western suburbs; development of the *Body Suits* touring exhibition; and the securing of funds to send two Victorian artists to China in 1996 under the Arts Access Australia-China Cultural Exchange Program.

□ SPECIAL RESIDENTIAL SERVICES (SRS) ARTS PROGRAMS

Coordinator: Jemma Bellham

■ Southern Region SRS Program

Artists: Mari Lourey, Malcolm Hansford, John Rasmussen

In 1995 the co-ordinator undertook research to investigate the scope and scale of Supported Residential Services (SRS) in the Prahan and Malvern area, specifically targeting residents with psychiatric disabilities.

On the basis of these findings, the Co-ordinator established a series of music workshops with the musicians working with residents in six SRS in the area. These workshops culminated in two community concerts, involving schools, service groups and in-kind support from the City of Stonnington and the SRS proprietors, and with an audience of 100 guests. With this pilot stage established, the program will operate in Prahan and Malvern during 1996-97. Funded by Psychiatric Services, Health & Community Services.

■ Western Region SRS Program

Artists: Lynden Bobbitt, Ann Holt, Ev Vyhna and Rachel Walker

These four artists were based at six Special Residential Services across the western region, in Newport, Footscray and Essendon. The artists conducted weekly in-house workshop sessions over twenty weeks with residents with psychiatric, physical and intellectual disabilities, the elderly, frail and isolated, and people with substance abuse problems. The residents and artists explored a wide range of mediums including drawing, painting, clay, sculpture, water colour and 2D works. The program culminated with an exhibition in late December with over 40 individual and collaborative mixed media works. Funded by the Home and Community Care Program, Health & Community Services.

□ ART DAY PROGRAMS

Funded by Intellectual Disability Services, Health & Community Services

Co-ordinator: Barbara Doherty

■ ART DAY Western Region - Spotswood

Artists: Lyndsay Mason and Claire Teisen.

Guest Artists: Rob Eastcott, Kerry Gilmartin, Lynne Hyland, Alex Pinder, Michelle Spooner, David Wells, Melbourne Mask Works, The Women's Circus.

■ Southern Region - Dingley

Artists: Gali Weiss and Charles Robinson.

Guest Artists: Christine Grace, Ian Paulin, Anne Riggs, David Wells, Llewellyn Wishardt, Melbourne Mask Works

These two multi media programs operate on an annual basis with people with intellectual disabilities at community venues at Spotswood and Dingley. A range of guest and sessional artists compliment the performance and visual arts sessions, which are conducted on Fridays throughout the year. Both groups worked towards end of year events with the Spotswood group presenting a performance celebration with large scale puppets, music and dance and the Dingley group presenting a parade event with totem figures and banners. A full colour brochure was

produced to promote both Art Day programs extensively in 1996.

■ ROYAL PARK HOSPITAL

Artist: Debbie Williams

This visual arts project was established in 1994 and completed in early 1995, and the artist worked with participants with psychiatric disabilities through the Rehabilitation Program. In February the project culminated in an exhibition mounted in the Royal Park Hospital Recreation and Leisure Centre with 13 participants presenting over thirty works. This exhibition included both individual and collaborative works, including drawings, paintings, prints and textiles. Funded by the RE Ross Trust and the Community Cultural Development Board of the Australia Council.

■ PRAHRAN COMMUNITY HEALTH CENTRE

Artist: Di Christensen

Di commenced at the Health Centre in November 1994, and established weekly workshops with participants with psychiatric disabilities continuing until April 1995. Participants created individual art works, however the group specifically collaborated to design and create a ceramic and mosaic installation for the stairwell site in public area of the Centre. The project culminated in June with a launch attended by over 50 guests, including the participants,

Centre clients and staff, local Member of Parliament and Victorian Minister for Education, Don Hayward, friends, family and local arts and community agencies. Funded by the RE Ross Trust.

■ HEIDELBERG HOSPITAL (first stage completed)

Writer: Lisa Jacobson

Editors: Bronwen Beechey and Linda Richter

Between January and June, Lisa Jacobson was based with the Rehabilitation Work Group, who are primarily World War II veterans. Lisa interviewed 29 people, recording and transcribing their stories. The group explored a wide range of themes and topics including school days, going into the work place, the outbreak of the war, experiences of war, marriage and family life. Two students, through the RMIT Professional Writing and Editing Course, prepared a preliminary edit of the material for publication in 1996. Funded by the Heidelberg Hospital and the Community Cultural Development Board of the Australia Council.

■ KINGSTON CENTRE

Artists: Anne Riggs and James Cattell

The Kingston Centre is the major regional geriatric health service based in Cheltenham. Anne and James commenced in July and were based at the Centre for one day each week, taking workshops with a wide range of Hospital clients with a focus on clay and ceramic techniques. The groups

□ PSYCHIATRIC SERVICES PROGRAM Funded by Psychiatric Services, Health & Community Services.

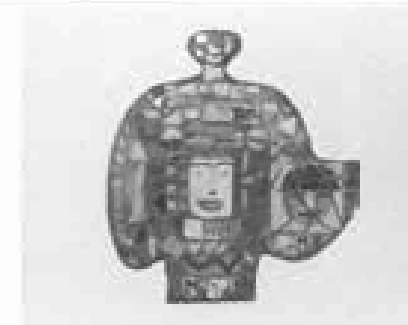
An annual multi media program, including pilot projects and classes, specifically targeting people with psychiatric disabilities across Melbourne and regional areas.

■ WIMMERA COMMUNITY CARE / HORSHAM

■ ST. LUKE'S COMMUNITY SUPPORT PROGRAM / BENDIGO

Artist: Jemma Bellham

These two agencies provide support services and recreation/leisure options for people with psychiatric disabilities in rural areas. Both agencies were keen to provide a focus for the local interest in drama and performance. Jemma conducted



an intensive workshop in each regional centre exploring improvisation, clowning and mask with participants, staff and local artists, with a view to contributing to further drama activities in 1996.

■ FINTRY BANK

Artist: Srecko Radman

The Fintry Bank service provides supported accommodation and an outreach program for people living with schizophrenia in the Clifton Hill area. Srecko conducted a pilot visual arts project with participants over a 10 week period, forming the basis for a second stage arts project in 1996.

■ YOUNG STREET CLINIC

Artist: Rick Moore

The launch of this project was held in April following the completion of a workshop series conducted by the artist between November 1994 and January 1995. The participants, through this community based psychiatric clinic in Frankston, created both individual and collaborative art works, with a focus on three dimensional ceramic and clay works, for the public areas of the Clinic. This project was the pilot stage for the subsequent visual arts initiatives co-ordinated through the Centre in 1995.



worked towards the creation of a major site-specific sculptural work which was installed in December. Funded by the Kingston Centre and the Community Cultural Development Board of the Australia Council.

■ NORTH FITZROY YOUTH REFUGE

Artist: Maria Filippow

The refuge operates through the Salvation Army and provides accommodation and support for homeless youth and youth at risk. Maria conducted regular workshops over a 20 week period, introducing a range of mediums and with the aim of the participants creating individual and collaborative works which will be mounted in their domestic environment when the project is completed in early 1996. Funded by the Macquarie Bank and the Sunshine Foundation.

■ KOORI ARTS BRIDGING COURSE

Co-ordinator: Robyne Latham

Tutors: Robyne Latham, Donna Leslie, Michelle Smith, Judith Ryan.

A skills development and literacy bridging course for Koori artists to develop their professional, artistic and educational opportunities. This project was conducted in partnership with Gurwidj, the Koori Neighbourhood House in Northcote, in December with a range of Koori artists engaged as sessional tutors. Funded by the Adult Community & Further Education Board through the National Aboriginal Literacy Strategy.

■ MAKING THE MOST OF LIFE

Artist: Claire Humphrys-Hunt

'Making the Most of Life' was a one day event celebrating United Nations International Day for Older People held in September and attracted over 10,000 people. Claire co-ordinated the Arts Access activity 'Make your Mark', a large scale participatory visual arts workshop in

□ JUVENILE JUSTICE PROGRAM

Funded through the Juvenile Justice Section, Health & Community Services.

This program has been operating over the 1994/95 period, and seeks to provide a range of arts initiatives for young people, on both custodial and community orders, which compliment and extend their regular program options:

■ Seaford/Springvale Juvenile Justice Units

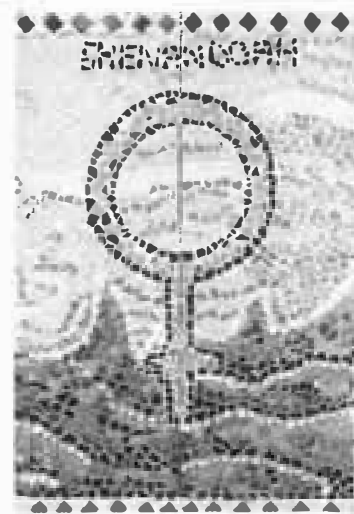
Artist: Maria Filippow

Based in the outer southern metropolitan area, these Units support approximately 300 young people who are placed on a range of community corrective orders. Maria commenced this pilot project in November 1994 and completed workshops in March 1995, with the aim of providing young people with the opportunity to explore a diverse range of artistic techniques and mediums.

■ Melbourne Juvenile Justice Centre (JJC)

Artist: Bernie O'Regan

With the re-development of the Centre complex and facilities a photography dark-room was built in the new Programs



Section. Staff had identified that trainees had demonstrated a keen interest in photography, however the dark-room was not operational and equipment was limited. Bernie was engaged to both conduct skills workshops, in black and white photography, with junior and senior trainees and establish the dark room facilities at Melbourne JJC. Workshop sessions included: introduction to cameras, composition, developing and darkroom techniques. Bernie also held a skills session specifically with Centre staff. The project culminated in a presentation of 19 of the trainees' photographs, including portraits and

landscapes, which were mounted in the foyer area of Melbourne JJC.

■ Parkville Youth Residential Centre

Artist: Tina Rose

It was identified that the ceramics facilities at the Centre provided limited opportunities for the residents to develop their creative skills and ideas. Tina worked with both the young male and female residents and the two groups designed and created works for the garden areas adjacent to their residential units. The young women created two large mosaic works (detail pictured) which have been mounted on the patio walls and the young men produced carved and decorated clay pavers which they have installed around the barbecue area.

■ Male Adolescent Program for Positive Sexuality (MAPPS)

Artist: Eamonn Scott

MAPPS is a education and health program operating specifically for young male offenders. Eamonn conducted the first of a series of intensive weekend workshops with the group, planned over the 1995/96 period, in drawing and painting. The group produced a series of self-portraits on panels which have been mounted in the corridor area at MAPPS.



painting, printing and textiles. Participants worked with Claire to create five banners celebrating older people and diversity. The co-ordinating committee will continue to display the banners at a range of senior citizens events. Funded by the Senior Citizens Week Committee.

■ ART & HEALTH CONFERENCE

Researcher/Artist: Maria Filippow

Arts Access has convened a steering group of arts and health professionals to establish the planning framework for a Victorian Arts & Health Conference, planned for 1996. Maria has conducted a research initiative specifically to examine the scope of arts programs and activities within health settings in Melbourne and regional areas, and to develop a program for such a forum, identifying issues, directions and opportunities. Funded by the Community Cultural Board of the Australia Council.

□ Body Suits

A Major National Touring Exhibition

Curator: Jane Trengove

Assistant Curator: Angie Jooste

Body Suits is a national visual arts touring exhibition exploring the theme of 'body experiences' including those experienced by people with physical disabilities. The proposal was initiated by Arts Access in 1995 and was developed with funding from Visions of Australia.

Development of the exhibition will continue throughout 1996 before the launch in 1997. *Body Suits* features work by nine artists - both with and without disabilities - from four states. The tour will involve 10 city and regional galleries in Victoria, Tasmania, South Australia, Western Australia and Queensland.

DADAA Network

Arts Access acts as the national co-ordinating body for the national network, Disability in the Arts, Disadvantage in the Arts Australia (DADAA).

The DADAA network advocates for better access to and increased opportunities in the arts for people with disabilities and people disadvantaged by social conditions.

In 1995 Jane Trengove continued in the position of National Coordinator.

NATIONAL COMMITTEE

Promotions

Distribution of the arts and disability brochure proceeded throughout 1995. The brochure promotes the high level of artistic achievement and the range of exemplary projects conducted by individual artists and companies throughout Australia.

National media coverage was obtained through *Link Magazine*, and *Artlink* and the brochure was inserted in the December issue of *Community Quarterly*. Work on a DADAA internet home page, linked to the Arts Access home page, began in late 1995.

Australia Council Arts & Disability Research Project

This has been a most significant role for the DADAA National Committee. The Research Project was published in mid 1995 and DADAA continued to advise on the implementation of policy and Australia Council Action Plan outlined in the Report recommendations.

The National Committee will meet in Sydney in February 1996, at the invitation of the Australian Council to discuss these issues. A separate DADAA meeting will be held to discuss the future and primary focus of DADAA for 1996 and beyond.

VICTORIAN COMMITTEE

DADAA and the Media

The State Committee has agreed to take a role in assessing the media's treatment of disability. DADAA will take a 'watch dog' approach by monitoring media treatment of people with a disability or disability issues, and establish a relationship with the media. Already Community TV Channel 31, has had several committee members appear on its *Challenge* program.

Advocacy

In 1995, the focus was on education and training in the arts sector. In December, DADAA met with the Director of the Tertiary Disability Liaison Unit for TAFE and Universities in Victoria to discuss a range of access issues.

Consultations

DADAA conducts research oriented consultations to survey the cultural interests and needs of individual artists and communities of people with disabilities. In 1995 the focus was on people with an intellectual disability. A questionnaire was formulated with assistance of Maria Filippow and Barbara Doherty, for distribution in 1996.

Disability Culture

The term 'disability culture' was discussed at two meetings in 1995. DADAA Victoria concluded that it has no confidence in such a term and would not support its use by peak bodies, including funding agencies.

Affiliation

It was decided that DADAA should affiliate with a disability organisation at national and state levels for the purpose of strategic advocacy.

■ EASE - the Entertainment Access Service

EASE - the Entertainment Access Service, promotes and develops equal access to arts, entertainment, recreation, sporting and other cultural events in partnership with people with disabilities and people who are severely disadvantaged by social conditions.

EASE achieves its aims through the operation of three major programs:

- **EASE Ticket Service** - provides subscribers with low cost tickets, a specialised seating service and information about accessible arts, entertainment, sport, recreation and other cultural events. Subscription is open to groups or individuals.

- **EASE Venue Access Program** - provides specialised information about access facilities and services at cultural venues. Through publications, promotions and awards the program promotes excellence and best practice in access and services provided at arts, entertainment, sporting and other cultural venues.

- **EASE Industry Development Program** - provides training to the arts, entertainment, recreation, sport and cultural industries on disability awareness and access issues. The program provides a consultancy service on access and policy development and staff training programs.

The Benefits of EASE Programs

✓ Better Access for all

People with disabilities comprise approximately 16-18% of Australians and this will increase with the projected ageing of our population base into the 21st Century. When venues and services are designed for people with special needs, a high level of access, amenity and comfort is available to all consumers.

✓ Audience Development

Each year EASE assists tens of thousands of people to attend a wide range of cultural events. This also makes a substantial financial contribution to the arts and entertainment industry in Victoria by developing new audiences. In 1996 EASE expects to pass the milestone of \$1 Million in ticket sales since 1987.

✓ Advocacy

EASE maintains regular contact with event promoters and venue managers through negotiation of ticketing arrangements and consultation on access policies. EASE also brings to the attention of the entertainment industry leading issues related to general service provision that directly affect people with disabilities and people disadvantaged by social conditions.



ABOVE: Promotion of excellence in access and facilities at all cultural venues is a key role of EASE. Melbourne's Scienceworks, part of the Museum of Victoria, provides a fine example for other venues. Photograph courtesy of Scienceworks. BELOW: EASE maintains a strong customer service focus in all its work. The 1995 EASE team included, from left: Lisa McKoy (EASE Venue Guide Project Coordinator), Dean Michael (EASE Program Manager), Rochelle Brown (EASE Ticket Service Coordinator) and Kate Allison (not pictured).



Publications

Subscribers receive the monthly *EASE Ticket Update* which provides current information on events available through EASE and low-cost or free events available elsewhere. In 1995 the *EASE* newsletter continued to provide news of EASE programs, issues affecting EASE subscribers, and regular venue access updates. From 1996, subscribers will receive a combined Arts Access/EASE newsletter. Organisations also receive *Arts Update*, a bi-monthly bulletin promoting practical arts opportunities available for people with disabilities in local communities. EASE also distributes the *Melbourne Venue Guide*, a handy guide to access facilities and services at key entertainment venues in Melbourne and regional Victoria.

RIGHT: Colin Friels in the Playbox Theatre production of 'The Incurable' by Louis Nowra. Photograph by Jeff Busby.



LEFT: Sport continues to be a popular entertainment choice of EASE Subscribers. Photograph courtesy Melbourne Quilt Tigers.



ABOVE: Victoria's Arts Minister, Haddon Storey with EASE Supporter, Andrew Denton and Arts Access Executive Director, Helen Bowman at the EASE launch.

RIGHT: Australian Opera star, Gillian Sullivan, provided a stunning musical opening for the EASE launch.



"I am in constant pain. Before I was aware of your service I rarely went out. Now that I am a subscriber, the 'EASE' of arranging seating to suit my needs encourages me to go out. My husband and I have a standing date each Saturday to go to the movies. I thank all at EASE for making this possible." - Frances Hicks, EASE Subscriber.

□ The EASE Ticket Service

During 1995 the ticket service continued to increase its reach and the demand for accessible, affordable arts, entertainment and sporting events continued to grow. A total of 18,848 tickets were distributed, compared with 15,180 in 1994. The total number of financial subscribers rose by 10% to 436.

In 1996 a new price structure will be introduced, bringing the subscription fee to \$22 for individuals and \$50 for groups. This has been necessary due to increased costs of administration and development of EASE services.

Promotion of the Ticket Service centred on distribution of the new brochure featuring Andrew Denton, and media promotions emphasising that many people who do not identify as having a disability are eligible to use the service.

Developments in 1995

This year EASE had the welcome support of the Melbourne International Festival, with inclusion of Arts Access/EASE contact information in the festival's 'Speedy Guide' and in the official program. The Festival is to be congratulated on this initiative, which is providing leadership on access issues among promoters of major cultural festivals.

Despite considerable EASE lobbying over the last few years we have not had success in negotiating EASE tickets to AFL football games, and most promoters of major rock concerts have shown little interest in EASE ticketing proposals. This remains a major concern for Arts Access.

□ EASE Venue Access Program

Venue Assessments & Reports

EASE conducts assessments of arts, entertainment and sporting venues to ascertain the level and quality of access for people with disabilities. The assessments cover aspects of staff service, seating plans, facilities for patrons, stairways and lifts, public transport and local parking. In 1995 with the advent of the research phase for the new *Melbourne Venue Guide* only one new venue assessment was conducted, for the George Jenkins Theatre, Frankston. However short 'profiles' of venues which had upgraded their facilities in 1995 were published in the *EASE* newsletter.

EASE Melbourne Venue Guide

Sponsorship of \$50,000 over two years was secured from VicHealth to fund production of a more comprehensive *Melbourne Venue Guide* and the development of the EASE Access Awards. Lisa McKoy completed the detailed research phase that has defined the scope of the Guide and a format for the assessment and presentation of venue access and general information.

Audio Description and Signed Events

Audio description allows people with vision impairment to enhance their experience of theatre performances. Patrons are provided with a headset which receives a broadcast by trained 'describers' who relate all important non-verbal actions of the performance. EASE continues to promote Audio Description and sign interpreted performances presented by the Melbourne Theatre Company. In 1995 the Association for the Blind became the primary booking agency for audio description units.

RIGHT: Julia Blake in the Playbox World Premier Production of 'Honour' by Joanna Murray-Smith. Photograph by Jeff Busby.



LEFT: The Bill T Jones/Arnie Zane Dance Company were among the many attractions available to EASE Subscribers at the 1995 Melbourne International festival. Photograph by Lois Greenfield.

□ EASE Industry Development Program

Consultancies

EASE conducts a consultancy service for management and staff of arts, entertainment, recreation and sporting organisations. In 1995 EASE was consulted by:

- City of Port Phillip - on how to make street festivals and events more accessible to people with disabilities
- Victorian Arts Centre - on improving access to the public lift and how best to install an accessible toilet
- Melbourne Fringe Festival - on how to accommodate people with disabilities at the Street Parade in Brunswick Street
- The CUB Malthouse - on the installation of a lift in the complex
- The Victorian College of the Arts - on how to make the studios in the Arts School more accessible
- The Mechanics Institute of Brunswick - on installing a ramp.

EASE Training

EASE Training packages are designed to meet the needs of front of house staff, venue managers, arts administrators, policy makers, and event promoters. In 1995 EASE presented two standard staff training programs.

- The *Disability Awareness* seminar is now recognised extensively across Victoria's cultural industries and was presented three times with a total of 38 participants:

Attendance: (in July at St Martins Theatre) The Princess Theatre, Victorian Arts Centre (7), Sandybeach Centre (2), Circus Oz, Sidney Myer Music Bowl, Save Time Services, Olympic Park (2), Flinders Park (3), Performing Arts Complex - Clayton, East Gippsland Arts & Recreation Access Group, St Martins Theatre; (in August at The CUB Malthouse) State Film Theatre, Napier Street Theatre (4), ACME Food Company, Village Roadshow Limited, Frankston Cultural Centre, The Princess Theatre; (in October at The Scienceworks) Melbourne Zoo (3), Werribee Zoo (2), Healesville Sanctuary, Scienceworks, Jewish Museum.

- The *Developing an Access Action Plan* seminar provides managers of venues with an understanding of the requirements of the Commonwealth Disability Discrimination Act and practical opportunities to draft appropriate action plans and access policies. This seminar was presented in November at Flinders Park.

Attendance: George Jenkins Theatre, Melbourne Cricket Ground (3), Scienceworks, Museum of Victoria, Napier Street Theatre, Frankston Cultural Centre, Arts Access, Morris-Walker Consultants.

EASE Committees

Two committees assist the planning and development of EASE programs. The EASE Advisory Committee monitors the overall work of EASE and makes recommendations to the Arts Access Management Committee on new directions for the service. The EASE Consumers Group represents the interests of EASE subscribers and other consumers of entertainment in Melbourne, with a particular interest in issues of access to venues and related services.

Major Promotions

- In March, EASE held the triple-bill launch of the new EASE program structure, the new EASE promotional brochure, and of Andrew Denton as public 'EASE Supporter'. Victoria's Minister for the Arts, the Hon Haddon Storey launched the new EASE program. Andrew Denton's association with EASE has drawn new attention to EASE programs throughout Victoria's cultural industries, and has helped to reinforce EASE's profile as a resource for the development of cultural access across the sport, arts, leisure and popular entertainment sectors.
- Helen Bowman and Dean Michael spoke at a forum organised by VicHealth in Melbourne
- Dean Michael spoke at both the Abilympics Conference in Perth and the Festivals and Events Conference in Melbourne.

■ EASE 1995 Subscriber Profile*

1. Youth - supporting organisations
2. Families
3. Psychiatric disability
4. Wheelchair users (5)
5. Intellectual disability (4)
6. Sight impairment
7. Women - supporting organisations (10)
8. Mobility impairment (7)
9. Frail Aged
10. Drug & Alcohol (8)
11. Deafness/Hearing impairment (12)
12. Chronic Illness (11)

* Listed by special interest group in order of number of tickets distributed.
() Position in previous year

Subscribers Top 10¹

1. Cinema
2. Musical Theatre
3. Opera (4)
4. Other (-)
5. Comedy (7)
6. Basketball (5)
7. Circus (-)
8. Classical Music
9. Theatre (Dramatic) (6)
10. Theatre (Comic) (6)

¹Popularity based on availability and affordability.

Most Requested New Events

1. Rock Concerts
2. International Performers
3. AFL Football

ARTS Access

■ Training Program



The Arts Access Training Program offers a wide range of practical arts workshops, short courses and specially designed arts training programs for staff development within the human services sector.

In 1995 Arts Access was provisionally registered with the State Training Board as a private provider of training.

The 1995 program was managed by Julie Melia, who joined Arts Access on a 40 week placement through the Teacher Release to Industry Program (TRIP). The program was delivered in four streams:

- Artist Training
- Arts & Disability Training
- Arts Skills Training for staff in the health and community services sectors
- Regional Training

This was the most extensive program of training yet mounted by Arts Access and established a strong base for future initiatives.

Julie's TRIP placement greatly extended Arts Access' involvement in the adult further education and industry training sectors. This has been achieved through more intensive marketing of the training program through direct contact with key institutions, targeted media promotions, and participation in a wide range of industry forums, launches and workshops.

Julie's expertise has been invaluable in developing competency-based curricula toward the accreditation of courses such as *Business & Tendering* and the *Visual Art Bridging Course*.

□ ARTIST TRAINING

The **Artist Training Program** develops short courses designed for practising and prospective professional artists. Courses cover art and new technologies, small business management skills, tendering, the arts in a community context, career pathways, marketing, and arts project management.

Short Bridging Courses were piloted in 1995, offering training in both visual arts and theatre arts to people with disabilities. Arts Access developed the courses in response to a DADA Network (see page 13) proposal indicating that people with physical disabilities face major barriers to participation in formal higher education arts training. Many are obstructed from access to mainstream arts training facilities or become reluctant to proceed.

■ Visual Art Bridging Course - Pilot Program

Co-ordinator: Julie Melia

Artist: Ross Moore

This visual art course encouraged artists with physical disabilities to pursue studies at tertiary level. Run over 20 weeks, the practical tuition focussed on developing folios of work for art school applications. To acquaint students with the tertiary environment, studio based sessions were conducted at the visual art studio of the Swinburne University of Technology, Prahran Campus.

Tutor, Ross Moore structured a varied program including the use of diverse art media and techniques, thematic development, and familiarisation with exhibition and gallery operations. There were nine enrolments with a regular core of five skilled and talented students with aptitude for further formal studies.

With thanks to Ian Edlin of the Yooralla Independent Living Service for providing wheelchair ramps.

■ Business & Tendering in the Arts

Coordinator: Julie Melia

Facilitators: Bin Dixon-Ward, Program Manager Arts Resource & Promotion, City of Melbourne; Lill Healy, Community Enterprise Network; Abigail Carmody, Arts & Cultural Services, City of Yarra.

A course designed for artists and other arts workers to provide practical information on business skills and the local government employment environment within the context of compulsory competitive tendering (CCT).



Participants examined implications of CCT for artists and acquired practical skills for establishing small businesses, business planning, developing career pathways, developing tender documents, and marketing.

The course was conducted over six sessions in the Arts Access Studio and attracted 16 participants.

ARTS & DISABILITY TRAINING

Advanced Certificate of Residential & Community Services (ACRACS) Modules

In 1995 Arts Access received provisional registration with the Office of Training & Further Education (OTFE) as a private training provider and received funding to deliver two modules of the ACRACS course for direct care workers in residential and community facilities who provide services for children, youth, or people with intellectual disabilities.

Module 7- Arts & Leisure

Facilitators: Carol Downey, Arts Access Information & Resources Manager; Ian Edlin, Yooralla Independent Living Service Life Options & Further Education Unit; Jedda Bellham, performance and theatre skills artist.

Module 11- Recreation & Access

Both modules provide a focus on arts and disability and include: an introduction to disability, leisure and the arts; identifying client needs; skills for the team planning of artistic programs; leadership and facilitation skills; working with volunteers; integration and community recreation options.

Jedda delivered both modules using an active dramatic approach. Students explored themes relating to arts program implementation within the disability sector, engaging in role play, improvisation and experiential learning.

Students were required to submit completed work to the course co-ordinator for assessment. Assessment tasks were practical and directly relevant to a specific work area, disability group or artform. Successful completion of both modules was determined by participation in practical activities, attendance at workshop sessions and the development of a personal resource file (Module 7), and an independent research project (Module 11).

ARTS TRAINING PROGRAM

The Arts Training Program designs and facilitates arts skills training for the professional development of health care, social and community services personnel. This enables staff working in the human services sectors to develop arts project management skills and competencies in a wide range

The Benefits of Arts Training for staff in Health care, and social and community services

- show how cultural activities can be an integral part of an agency's service provision, thereby enhancing the quality of service provided to the community;
- provide staff with direct experience of arts programs that can enhance the quality of life of their clients;
- demonstrate how the arts can work co-operatively within recreational, social, cultural, clinical and educational practices;
- develop new skills.

of artforms. These practical arts training workshops are designed to support the independent establishment of artistic programs within a variety of human services settings.

Professionals participating in 1995 have included: occupational, diversional, dance/music and recreational therapists; community psychiatric nurses, support & rehabilitation workers; activities coordinators, teachers and instructors; and community development personnel. Participants came from metropolitan Melbourne, Bendigo, Echuca and the Wimmera.

Creative Movement for Older Adults

Facilitator: Naomi Aitchison, movement and dance artist.

Naomi introduced the benefits and aims of creative movement and dance programs adapted for professionals working with older and frail adults of varying abilities and needs.

Physical Theatre

Facilitator: Claire Teisen, performance/theatre artist.

Claire demonstrated the steps involved in planning and implementing a physical theatre program for people with intellectual and/or sensory disability. The workshop included an introduction to physical awareness and body movement through the Feldenkrais technique, movement in a theatrical context and maskwork. This workshop was held twice in 1995.

Creating Drama

Facilitators: Rhondah Whitaker and Jedda Bellham, dramatic and performance skills artists.

This three day workshop introduced skills for developing drama and movement programs designed for people with a mental illness. Participants developed project planning and management skills while experiencing a

variety of drama activities for developing spontaneity, physical awareness and enhancement of the senses.

Creative Visual Arts

Facilitator: Gali Weiss, visual artist.

A two day workshop of fine visual arts designed for staff working with adults with intellectual disability or dementia in Adult Training & Support Services (ATSS). The workshop provided practical experience in painting, printmaking, drawing, collage and sculpture. ATSS instructors and diversional therapists gained an understanding of the value of visual arts in enriching the lives of participants in ATSS programs.

Multimedia Visual Arts

Facilitator: Maria Filippow, visual artist.

Participants explored the establishment of arts groups, arts project possibilities, program resources, materials and activities for developing visual art programs for people with a psychiatric disability. Practical sessions included activities with a range of art media and techniques for the creation of two-dimensional and three-dimensional works.

REGIONAL ARTS TRAINING PROGRAM

Festivals & Celebrations

Facilitator: Jedda Bellham, drama/performance artist.

This arts project management workshop was designed for Adult Training & Support Services (ATSS) Staff Training & Development Unit, at Whitehorse TAFE, Doncaster Campus. The workshop explored the theme of community mapping and building a personal infrastructure for developing a celebration or festival as a community arts project with people with intellectual disability.

Visual Arts for Older Adults & Adults with Disabilities

Facilitator: Lynne Hyland, visual artist.

TRAINING OUTCOMES 1995

Drama Group in the Wimmera

A drama group for people with psychiatric disabilities was established by participants Graeme Jago and May Davey since attending the *Creating Drama* and *Physical Theatre & Movement* workshops.

Mural and Oral History Projects

After completing the *ACRACS Recreation & Access* module, Mary

Wilson is developing a workplace project for Prague House residents, to include the building of a wall and oral history and poetry projects.

Art Studio in Echuca

Tehan Enterprises, Echuca received funding to establish an art studio for people with intellectual disabilities. ATSS instructor, Lorraine Kennedy was a participant in Arts Access training workshops.

Artist Business Plans

Artists attending the *Business &*

STUDENT COMMENTS

"A wonderful introduction to the value, purpose and scope of community arts."

"A refreshing outlook that can be passed on to clients. It helps people feel good about themselves."

ACRACS Modules

"Thankyou for bringing me back into community development - I have found the whole workshop a wonderful experience..."

"Best course I have done to date."

"Most helpful in gaining new ideas and initiatives for projects."

Physical Theatre

"Claire has provided me with lots of ideas, information and courage to try and use in constructing my future programs. Thank you!"

Creative Visual Arts

"I really liked the "hands-on" approach and having to contribute. We always expect this of our clients. It is a great experience to be at the receiving end."

A workshop for Whittlesea Community Health Centre staff who work with older adults and adults with disabilities. The workshop covered design ideas; the choice and use of visual arts materials; and techniques for paper mache, silk painting, ceramics, mosaics and painting.

Creative Movement for Adults with Disabilities

Facilitator: Naomi Aitchison.

This workshop for staff of Central Bayside Community Health Centre examined the benefits of creative movement and creative dance programs for older adults and adults with disabilities. Naomi conducted a variety of activities in movement for use with adults of varied abilities and needs.

Tendering course submitted their personal business plans at the final training session and were encouraged to develop a tender proposal for a community arts program.

Independent Research and Projects

Students in the *ACRACS Module 11 Recreation & Access* course were required to develop independent research projects outlining community arts projects for people with disabilities. The projects are expected to be implemented in community settings or workplaces.

Library & Information Services

Arts Access Library & Information Services are vital instruments in the development of cultural access in Australia.

The key functions of the Services are to:

- Operate the Arts Access Reference Library, a nationally significant collection of information resources including printed and audiovisual materials.
- Provide information and consultancy services to assist communities to establish their own arts activities;
- Identify and produce information resources to support the Training Program, the Artistic Program, EASE and Arts Access advocacy and community education projects.
- Provide a direct information service to professionals within the arts, health and community services, recreation and education sectors, tertiary students and the general public.
- Initiate research and development projects on cultural access issues based on identified needs.

Reference Library

The Reference Library forms the core of a nationally significant document-based information service, holding over 2200 items including books, audiovisual materials, newsletters, journals, project reports, conference papers, monographs and directories.

The collection focuses on the arts in relation to disability, health care, social disadvantage, prisons, youth, aged care, rehabilitation, access, cultural planning and other associated issues.

The collection supports and informs individuals and organisations on issues of arts practice, project management, and development, training, access and policy issues for people with a disability/social disadvantage.

The collection is open to the public during office hours. There are limitations on physical loans. Bibliographies can be prepared and printed documents can be photocopied in part for research purposes. Enquiries are answered by telephone, post, fax or electronic mail.

A Resource for Policy Development

The collection reflects the development of the arts and disability/disadvantage sector in Australia and abroad and is a barometer of emerging local and international issues.

As the collection holds materials that examine access and discrimination issues within a cultural context, it is a valuable resource for arts and entertainment industry managers who wish to implement disability access policies under the Commonwealth Disability Discrimination Act.



ABOVE: The Reference Library holds over 2200 items including books, audiovisual materials, newsletters, journals, project reports, conference papers, monographs and directories.

It is also providing a much needed resource for arts training institutions that wish to address disability access issues, and for health and community services agencies wishing to establish arts programs and staff training in the arts.

An observed trend in 1995 was the increase in the number of publications raising the issue of disability representation in the media.

Artistic Project Reports

The collection holds all reports written on completion of Arts Access artistic projects. Each report documents the establishment and progress of an individual project, providing useful information on the artistic process, evaluation of the progress and outcomes of projects, photographic documentation, and the comments of participants and staff of host agencies. The reports are invaluable for artists, host agencies or funding bodies wishing to gain insight into the practicalities and benefits of conducting arts projects.

Library Collection Development 1995

In 1995, 154 titles were added to collection with another 60 awaiting cataloguing. Additional shelving and storage equipment was provided through a capital works grant from the Office of Psychiatric Services, Health & Community Services.

A critical issue for the continued development of the collection is the need for dedicated work space for library users.

Information Services

Consultancy

The Information Services Officer provides expert advice on a wide range of arts and disability project issues and assist individuals and organisations to find appropriate information resources within Arts Access and at other sites.

Information most frequently requested includes: advice on funding sources, guidance on arts project development, the location of key contacts for managing community arts programs, training options, referrals to artists, and lists of local and overseas contacts.

A series of fact sheets will be produced to provide the most frequently requested information and will be available both in print and on the Internet.

Online information Services

New information technologies such as the Internet have emerged as key opportunities for efficient dissemination of Arts Access information resources.

In 1995 Arts Access established a 'homepage' on the World Wide Web through VicNet, the Victorian Government's gateway to the Internet.

Arts Access now has instant access to vast new information resources and is developing a broader client base for its own information services. The inbuilt electronic mail facility has added to the range of options for users wishing to access and receive information. This has opened up a number of exciting opportunities and has enhanced our ability to reach clients in remote, isolated regions and overseas.

Volunteer, Neil Blenkiron took up the challenge of developing the Arts Access home page, building on initial work by VicNet staff, and Arts Access Public Affairs Manager, Viv Carroll.

Arts Access Internet Addresses:

Homepage: <http://vicnet.net.au/~artsacc/artsacc.htm>

Electronic mail: artsacc@vicnet.net.au

Information Sessions for Tertiary Students

Formal information sessions are provided for tertiary students and workers in the arts, community services, disability and allied health. This forges valuable links with a diverse range of groups and creates awareness of useful resources for students as they move into the workplace.

Twelve information sessions were delivered on-site and at tertiary institutions to students of the Advanced Certificate of Residential and Community Services (ACRACS),



More accessible arts opportunities. One aim of Arts Access Information Services is to assist the cultivation of new arts options for disadvantaged groups.



ABOVE: Information Services Officer, Carol Downey logging on to the internet. Arts Access now has instant access to vast new information resources and is developing a broader client base for its own specialised information services.

Arts, Community Development, Occupational Therapy, and Recreation & Leisure.

National Networking Project

In 1995 Arts Access continued to develop ways to make the information materials within the Reference Library more accessible to local, regional and interstate users. New links were established with a wide range of contacts for the benefit of information sharing, and building new resources. These included both arts and non-arts sector networks, library networks, information service providers, local government, and tertiary institution.

To inform the development of Arts Access own information services, Carol Downey is investigating models of management for library collections and information services, systems and technologies.

Carol participated in the National DINA (Disability Information Network Australia) Forum held in Adelaide. Key discussions were on the development of guidelines and models for the delivery and qualitative evaluation of information services for people with a disability. While in Adelaide Carol met with the Community Arts Network (SA), the Sport, Arts and Recreation Council for People with Disabilities (SPARC), Arts in Action, the Disability Information Resource Centre, and attended a demonstration of the Common Ground Bulletin Board.

Research & Development

Information Services conducts research projects in key areas of Arts Access' program and policy development.

Continued on Page 22



Arts Access Studio

The Arts Access Studio is a multi-purpose venue suitable for a variety of arts-based activities including exhibitions, small scale performances, seminars and rehearsals.

The priority is for use by artists with disabilities or those disadvantaged by social conditions. Other groups and individuals, including major arts and community organisations also use the studio and provide valuable income to support the Studio's aim of making exhibition space financially accessible. The Studio is also a key facility for Arts Access programs, including training workshops, artistic projects, in-house meetings, and special events.

Hiring Policy

Hire costs are set at a sliding scale according to hirer's financial means. For instance artists with disabilities, or unfunded artists are charged less than professional companies.

Developments in 1995

In 1995 Samantha Marsh continued to Co-ordinate Studio bookings and promotion and developed the Studio's

awareness among fine arts students and community groups.

Now that it is possible to close off the Studio from the Arts Access offices, independent use, including night use, has increased. To maximise the number of future bookings there has been considerable planning and promotion of the Studio use has been reviewed.

From 1996 three distinct 'seasons' of four weeks each have been set aside for exhibitions. Outside the exhibition seasons will be four terms of Saturday mixed media art classes for people with psychiatric disabilities. Evening and weekend use will again be promoted strongly in 1996.

Maintenance and Works

Increased use of the studio, particularly by visual artists, demands regular maintenance, such as painting of the walls and minor repairs to the surface. The studio floor also requires thorough cleaning and repolishing. With increased use at night and by groups independent of Arts Access, lockable

storage shelves in the store room are required.

1995 Bookings

A wide range of artists, students, performing arts companies and other groups chose to use the Arts Access Studio in 1995. The 23 events booked included:

- AMAG arts management seminar
- Louise Anderson and group - student exhibition
- Australian College of Dramatic Arts
- Box Hill TAFE Student exhibitions
- DARE (disability organisation)
- Chris Gray - Exhibition
- Greenmill Dance Company
- Melbourne Writers Festival
- Playbox Theatre Company
- Proud and Profane - drama group
- Somebody's Daughter Theatre Company
- Swinburne TAFE - Student exhibition
- Adrian Walshe - Exhibition
- VCA Dance
- VCA Performing Arts

Library & Information Services

Continued from page 21

Carol Downey devoted much time in 1995 researching technology based library information services and procedures. However, Arts Access recognises the vital importance of maintaining the more traditional means of providing its information service for those without access to the new technologies.

Emerging issues

Access to skills training in technology based arts and information media is one of a number of critical issues which Arts Access will continue to promote within the broader arts community. Other issues include: equity variance in the cost of access for city based and country based information service users; and the availability of adaptive devices for use by people with disabilities to access technology based arts production equipment and information services.

Key Organisations & Contacts Database

A database has been designed and developed to streamline responses to requests for key contacts in arts/disability and health sectors locally, nationally and internationally.

Other sectors to be added include funding bodies, local government arts and peak agencies in specific artforms. The project was undertaken by RMIT BA Recreation final year student, Simone Masenhelder, who joined Arts Access on a field placement.

Computer Upgrade

The Information Services computer and software has been upgraded. The NICAN national database of recreation and leisure services and programs for people with disabilities has also been installed, adding to the growing database within Information Services.

Promotion

Production and wide dissemination of a new Library and Information Services Brochure in 1995 resulted in requests for information from a broader community sector.



Arts Access Trust Appeal

Patron: Dame Elisabeth Murdoch

In over 21 years of operation Arts Access has created some of the most innovative and beneficial arts programs for special needs groups in Australia. With the establishment of the Arts Access Trust, it is breaking new ground in fundraising for small arts organisations.

The Arts Access Trust is legally constituted as a Sub-Trust of the Victorian Community Foundation, which is administered and managed by ANZ Executors & Trustees. The aim of the Trust is to provide a continuing, independent source of funding for demonstration programs, research, and fixed organisational costs - the most difficult areas to fund.

The Arts Access Trust Appeal Committee has been established under the patronage of Dame Elisabeth Murdoch AC, and the Chairmanship of Creighton Burns AO, immediate past Chancellor of the Victoria University of Technology, and a former editor of *The Age* newspaper.

The initial target for the Appeal is \$1,000,000 or more, to be raised as soon as possible

The need for the Trust

Over the years Arts Access has established many creative funding partnerships with governments, philanthropic trusts, corporations and the community. But this is no longer enough. In the economic climate of the 1990s the security of traditional sources of funding cannot be guaranteed. Meanwhile Arts Access must have the freedom to plan and to respond to identified needs.

The Arts Access Trust is vital because:

- More people with severe disabilities are leaving institutions to live in the greater community;
- Cutbacks to government spending and services mean these people have limited opportunities to participate in cultural and recreational life; and
- The number of people living in crisis, including young, homeless and unemployed people, has grown.

Direct benefits of the Arts Access Trust

- ✓ New programs and services can continue to be developed to meet the needs of people whose access to the arts is limited or nonexistent;
- ✓ Reduced cost of programs to the community;
- ✓ Security for Arts Access' future development; increased self-sufficiency; and greater ability to cover fixed organisational costs.
- ✓ Capacity to respond faster to emerging needs and new opportunities.

Chairman's Report

In 1995 development of the Arts Access Trust Appeal moved slowly during a period of narrowed fundraising activity. No public events were held this year, with all donations being secured through direct appeals to individuals and institutions. At the close of 1995, we had raised just under \$210,000.

Once again there was heavy demand from other non-profit groups for the diminished funds available from the philanthropic and corporate sectors. However we are pleased that there remains continued support for the aims of the Arts Access Trust and that donations were received in 1995 from:

- The Gandel Trust
- The RE Ross Trust
- The Vizard Foundation

This year considerable work was done to restructure the Trust Appeal Committee to make its processes and activities more effective given the limited staff and financial resources available to it.

With financial and corporate planning being major issues, there was keen involvement by Trust Appeal Committee members in the Arts Access Strategic Planning event and later in the key working groups.

The primary goal of the Appeal Committee remains that of securing funding for the Trust Development Program which includes a full time program manager. This will consolidate Arts Access' fundraising efforts, and maximise the marketing potential of the Trust. The urgency of this appointment has been increased with the loss of the staff position of Public Affairs Manager, whose tasks included promotional and administrative support for the Trust Appeal.

My personal thanks go once again to our generous donors and in-kind supporters, to our hard working staff, members of the Appeal Committee, for their dedicated efforts throughout 1995.

If you are not yet a donor to the Arts Access Trust, please contact Executive Director, Helen Bowman who can explain how your gift to this unique appeal will bring the benefits of participation in cultural life to tens of thousands of disadvantaged Victorians each year.



Creighton Burns AO
Chairman,
Arts Access Trust
Appeal Committee

for the year ended December 31st, 1995

INCOME			EXPENSES		
	1995	1994		1995	1994
	\$	\$		\$	\$
INCOME			Salaries - Service Provision	357,019	311,924
H&CS Grants	329,286	282,906	Salaries - Administration	113,877	115,340
Other State Government Grants	113,886	73,563	Business Undertaking Costs	49,491	42,467
Commonwealth Govt Grants	43,912	35,141	Finance Costs	1,066	90
Local Government	890	2,015	Depreciation	16,701	15,507
Client Fees	8,080	12,091	Occupancy Costs	-	100
Charitable Contributions	24,037	40,991	Office Costs	32,426	25,523
Income from Investments	10,812	6,337	Fuel/Light/Power	6,250	3,745
Fundraising Income	16,577	1,220	Motor Vehicle Expenses	5,293	4,341
Business Undertaking Income	69,024	58,907	Property/Equip/Maintenance	39,383	40,985
Other Revenue Recoveries	-	65	Staff Related Costs	2,441	3,713
			Volunteer Costs	878	-
TOTAL INCOME	616, 504	513,236	TOTAL EXPENSES	624,825	563,735
			Operating Surplus/(Deficit)	(8,321)	(50,499)
			Transfer to Fundraising Reserve	(16,250)	-
			SURPLUS/(DEFECIT)	(24,571)	(50,499)

■ Application of Grants

The application of grants and donations received during 1995 is detailed below. It is not, however, a comprehensive breakdown of funding received from projects in 1995 as it does not include projects funded through consultancies, workshop fees, or user pays contributions. Projects carried forward into 1996 are transferred as Grants in Advance.

GENERAL GRANTS			
Arts Victoria	75,000	Dept of Sport & Recreation	
Health & Community Services (H&CS)	137,861	- EASE	9,895
PROJECT GRANTS			
Australia Council		Office of Training & Further Education	
- Brought forward from '94	6,586	- ACRACS Training	4,410
- General Programs	24,976	Adult Community & Further Education	18,540
- DADAA National Network	4,500	Victorian Health Promotion Foundation	6,041
Department of Communication & the Arts		Macquarie Bank - Crossroads Project	3,000
- Exhibition Development	7,850	Sunshine Foundation - Crossroads Project	2,037
Health & Community Services		Bank of Melbourne - Resource Unit	500
Intellectual Disability Services		R.E. Ross Trust (from '94)	
- Southern Region	61,214	- Prahran Community Health Centre	4,099
- Western Region	60,984	- Royal Park Project	1,290
HACC Program		Stegley Foundation (from '94)	
- Western Region SRS	19,420	- Trainee Project Officer	797
- California Inn	7,455	Community Arts Network	
Juvenile Justice		- Strategic Planning/Resource Unit	4,084
- Juvenile Justice Programs	12,279	Estate of Irene Mitchell - General Programs	5,000
- MAPPS	1,095	Austin Hospital	
Office of Psychiatric Services		- Oral History Project (from '94)	1,985
- Supported Residential Services	16,000	- Oral History Project	3,000
- OPS Programs	6,330	Kingston Centre	11,645
- Resource Centre	2,000		

■ Independent Auditor's Report

Scope

We have audited the accounts of Arts Access Society Inc. for the year ended 31st December, 1995. The Management Committee is responsible for the preparation and presentation of the financial report and the information contained therein. We have conducted an independent audit of the financial report in order to express an opinion on it to the members.

Our audit has been conducted in accordance with the Australian Auditing Standards to provide reasonable assurance as to whether the accounts are free of material misstatement. Our procedures included

examination, on a test basis, of evidence supporting the amounts and other disclosures in the accounts, and the evaluation of accounting policies and significant accounting estimates. These procedures have been undertaken to form an opinion as to whether, in all material respects, the accounts are presented fairly in accordance with Australian Accounting Concepts and Standards and statutory requirements so as to present a view of Arts Access which is consistent with our understanding of the Society's financial position and the results of its operations.

The audit opinion expressed in this report has been formed on the above basis.

Balance Sheet

As at 31st December, 1995

	1995	1994
	\$	\$
CURRENT ASSETS		
ANZ V2 Account	134,383	136,878
Petty Cash Imprest	200	200
Sundry Debtors	13,053	550
EASE Ticket Debtors	27,732	15,825
Less Provision for Doubtful Debts	(1,000)	-
CBA Cheque Account	6,852	3,481
Prepayments	17,485	7,854
Total Current Assets	198,705	164,788
ADD NET FIXED ASSETS		
H&CS Assets	20,190	15,252
Leasehold Improvement - At Cost	4,432	3,659
Motor Vehicles - At Cost	3,951	6,323
Office Furniture & Equipment - At Cost	11,830	16,202
Total Net Fixed Assets	40,403	41,436
TOTAL ASSETS	239,108	206,224
LESS CURRENT LIABILITIES		
Sundry Creditors	7,441	4,461
Provision for Holiday Pay	14,560	15,725
Provision for Fundraising	33,749	-
Income in Advance	132,066	123,733
Capital Grants Unexpended	800	2,959
Art Acquisition Fund	-	(5)
Total Liabilities	188,616	146,873
NET ASSETS	50,492	59,351
MEMBERS FUNDS		
Surplus/(Deficit) at Start	(83,819)	(33,320)
Surplus/(Deficit) This Year	(24,571)	(50,499)
Capital Grants - Prior Years	143,170	140,087
- This Year	15,712	3,083
	158,882	143,170
Total Member's Funds	50,492	59,351

Audit Opinion

In our opinion, the foregoing Balance Sheet and the Notes to and forming part of the accounts present a true and fair state of the financial position of Arts Access Society Incorporated as at 31st December, 1995 and the accompanying Statement of Income and Expenditure is properly drawn up so as to exhibit a true and fair view of the revenues and expenses for the year.

At their meeting on 21 February, 1996, the Arts Access Management Committee made the following resolution in adopting the financial accounts of the Society for the year ended December 31, 1995:

In the opinion of the Management Committee of Arts Access Society Incorporated:

(a) the Statement of Income and Expenditure, the Balance Sheet, and the Notes to and forming part of the Accounts are drawn up so as to give a true and fair view of the result of the Society for the year ended 31st December, 1995 and the state of the affairs of the Society at that date; and

(b) at the date of this statement, there are reasonable grounds to believe that the Society will be able to pay its debts as and when they fall due.

Dated: 8 March, 1996

Kate

John Leslie Waters *FASA, FCPA, FCIM*
Waters, Williams & Co.
347 Riversdale Road, Hawthorn, VIC 3122

Statement of Cash Flows

for the Year Ended 31 December 1995

	1995 \$	1994 \$
CASH FLOW FROM OPERATING ACTIVITIES		
Income	616,504	513,236
Less Operating Expenses	(624,825)	(563,735)
Add Back Non-Cash Items		
Depreciation	16,701	15,507
Provision for Holiday Pay	(1,165)	-
Provision for Doubtful debts	1,000	-
Net cash provided from operating activities	8,215	(34,992)
CASH FLOW FROM INVESTING		
Fixed Assets Purchases	(15,668)	(7,833)
Capital Grants	15,712	5,042
Increase (decrease) in creditors	2,980	(5,508)
Decrease (increase) in debtors	(24,410)	(2,866)
Decrease (increase) in prepayments	(9,631)	1,016
Increase (decrease) in grants in advance	25,832	(33,630)
Increase (decrease) in Capital Grants Unexpended	(2,154)	-
Net cash provided (used) from investing	(7,339)	(43,779)
Net increase (decrease) in cash on hand	876	(78,771)
Cash at beginning of financial year	140,559	219,330
Cash at end of financial year	141,435	140,559
MAKE UP OF CASH		
ANZ V2 - Term Deposit	134,383	136,878
Petty Cash	200	200
CBA Cheque Account	6,852	3,481
	141,435	140,559

Notes to and Forming Part of the Accounts

for the Year Ended 31 December 1995

Statement of Accounting Policies

The accounts have been prepared and presented in accordance with applicable Statements of Accounting Concepts and applicable Accounting Standards, and the Corporations Law, including the disclosure requirements of Schedule 5. The Accounts have been prepared on the basis of historical costs and do not take into account changing money values or, except where stated, current valuations of non-current assets. Cost is based on the fair values of the consideration given in exchange for assets. The accounting policies have been consistently applied, unless otherwise stated.

The following is a summary of the significant accounting policies adopted by the company in the preparation of the accounts.

(a) Income Tax

The Society holds an exemption and therefore is not liable to income tax on any surplus that accrues.

(b) Fixed Assets

The depreciable amount of all fixed assets are depreciated over their useful lives commencing from the time the asset is held ready for use. The carrying amount of fixed assets is reviewed annually by directors to ensure it is not in excess of the recoverable amount of these assets. The recoverable amount is assessed on the basis of expected net cash flows which will be received from the assets' employment and subsequent disposal. The expected net cash flows have not been discounted to their present value in determining the recoverable amounts.

Motor Vehicles

Motor vehicles are recorded at cost and are depreciated using the straight line method over their estimated useful lives of 10 years.

Leases

Leasehold improvements are amortised over the shorter of either the unexpired period of the lease or the estimated useful lives of the improvements.

(c) Moneys Held for Specific Purposes

Unexpended grant or trust income in respect of specific projects and activities are treated as deferred income (a liability) at year end to enable matching with related expenditure in subsequent financial years.

(d) Employee Benefits

Provision is made in respect of the economic entity's liability for annual leave and longservice leave at balance date. Long service leave is accrued in respect of all employees with more than 10 years service with the Society. Contributions are made by the Society to an employee superannuation fund and are charged as expenses when incurred. The economic entity has no legal obligation to provide benefits to employees on retirement.

Acknowledgements

Arts Access sincerely thanks the following government agencies, community organisations, companies and individuals for their generous assistance and support during 1995:

Funding

Commonwealth Government

The Australia Council
- Community Cultural Development Board
- Literature Board

State Government

Department of the Premier & Cabinet
Health & Community Services
- Disability Services
- Psychiatric Services
- Juvenile Justice Branch
- Western Region, Intellectual Disability Services
- Southern Region, Intellectual Disability Services
Department of Arts, Sport & Tourism (Victoria)
- Arts Victoria
- Sport & Recreation Victoria

Municipal

City of Melbourne

Philanthropic Trusts

The William Angliss (Vic) Charitable Fund
ANZ Executors & Trustees
The Danks Trust
The Felton Bequest
The Queen's Trust / Australia
The Lance Reichstein Charitable Foundation
Maquarie Bank Charitable Foundation
The R E Ross Trust
The Helen M Schutt Trust
The Stegley Foundation
Sunshine Foundation
Victorian Health Promotion Foundation

Corporations

Coles Myer
Bank of Melbourne

Organisations

William Angliss College
Austin Hospital
Community Arts Network
Fairfield Hospital
Heidelberg Hospital
Kingston Centre
The Tyabb Packing Store
Wimmera Community Care (Paul Denson, Leisure Options Coordinator)

In-kind Sponsors & Supporters

Acme Food
Australian Film Institute
The Australian Opera
Blueberries Gourmet Food
The Craftsman Press Pty Ltd
Grant Gittus Graphics
Luscombe & Partners Advertising
Microsoft Australia
Millmaine Entertainment
Spicers Paper (Brian Longmore)
The Strategy Team (Helen and Kieran Woods)
Typographical Services (Graham Berry)
Village Roadshow Corporation

Individuals

Miriam Bass
Peter Bennett
Steve Bodo
David Commins
John Coe
Andrew Denton
Peter Ingham
Phil Lukies
Hon. Richard McGarvie
Mrs Lesley McGarvie
Sue Natrass
Hon Haddon Storey
Gillian Sullivan
Graham Thorn

EASE - Entertainment Access Service

Arts Access thanks the following companies, organisations, promoters and individuals for their support of EASE in 1995:

ABC TV
Adrian Bohm Productions
Advantage International

Alexander Theatre
Arena Theatre
Australian Chamber Orchestra
Back-to-Back Theatre
Bharatam Dance Company
Circus Oz

Crossroads - Salvation Army
Paul Dainty Corporation
Andrew Denton
Edgley Ventures
Elston, Hocking & Woods
Essgee Entertainment
Field-Day Enterprises
Flying Fruit Fly Circus
Frontier Touring Company
Geminiani Chamber Orchestra

Robert Ginn
Rod Goss Theatre
Good As Gold
Great Sights Tours
Hocking, Vigo & Gerrand
Hoyts Corporation
Kevin Jacobson Promotions
Liquid Amber Theatre Ass'n
Melbourne Cricket Club
Melbourne International Comedy Festival
Melbourne International Festival
Melbourne Music Festival
Melbourne Summer Music (VACT)

Melbourne Tigers Basketball Club
Ross Mollison Marketing
Montage/ Vic. Arts Centre
Myer Music Bowl
Jon Nicholls Productions
North Melbourne Giants Basketball Club
Garry Penny Productions
Playbox Theatre Company
Royal Agricultural Society of Victoria
Soul Theatre
South East Melbourne Magic Basketball Club
Stable Productions
Tennis Australia
The Australian Ballet
The Australian Opera
The Australian Pops Orchestra
The Bell Shakespeare Company
The Comedy Club
The Ford Australian Open Restaurant
Melbourne Symphony
The Melbourne Theatre Company

Gary Van Egmond
Victorian Cricket Association
Victorian Rock Foundation
Victoria State Opera
Victorian Arts Centre Trust
John Whale Productions

Arts Access also thanks the management and staff of the following venues and ticketing agencies for their support of EASE in 1995:

Alexander Theatre
Athenaeum Theatre
BASS Victoria
Comedy Theatre
The CUB Malthouse
Flinders Park - National Tennis Centre
George Jenkins Theatre
Her Majesty's Theatre Booking Hall
Mietta's
Monash University - Clayton and Frankston campuses
Palace Cinemas
St Martin's Youth Arts Centre
Scienceworks
Sidney Myer Music Bowl
Sandybeach Centre
Sports and Entertainment Centre
The Comedy Club
The CUB Malthouse
The Last Laugh
The Princess Theatre
The Victorian Arts Centre
Universal Theatre



Promoting A New Vision for Victoria:
*The World's Most
Accessible Centre of Culture*

Arts Access Membership, EASE Subscription & Donations

Arts Access is a not-for-profit, community-based arts organisation creating cultural opportunities in partnership with people with disabilities and people disadvantaged by social conditions.

You can join us. Play a role in the work of Arts Access by becoming a financial member or by making a tax deductible donation. Your support will ensure that our work continues to involve more people with more creative programs and services each year.

Arts Access Membership is open to Individuals (\$30 & \$15 Concession annually) and Organisations (\$50). Members receive the quarterly newsletter *Arts Access News* which reports news of Arts Access programs and developments within the Arts & Disability sector. Members are also eligible for discounts on some Arts Access services and receive invitations to special events.

Donations can be made to Arts Access or to the **Arts Access Trust**, an innovative capital fund that is building an independent source of income for our wide ranging programs. Donations of \$2 or more are tax deductible.

Annual subscription to the **EASE Ticket Service** is open to Individuals (\$22) and Organisations (\$50). Eligibility criteria apply.

If you don't need to use EASE services but wish to support its important work in making cultural venues and events accessible to more Victorians, please consider becoming an **EASE Supporter**. For a minimum tax deductible donation of \$30, we will keep you in touch with EASE events, training and program developments.

For further information contact:

Arts Access

109 - 111 Sturt Street

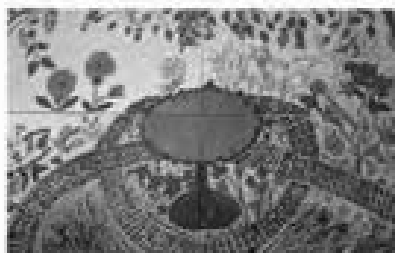
Southbank Victoria 3006

Phone: (03) 9699 8299 **Fax:** (03) 9699 8868

TTY: (03) 9699 7636 **Email:** artsacc@vicnet.net.au

Homepage: <http://vicnet.net.au/~artsacc/artsacc.htm>

***Making the Arts Work
for Everyone***



COVER: 'The Tree of Life' provided a theme for mixed media art works produced by residents of Greenhaven Supported Residential Service during the Western Region SRS Program in 1995. ABOVE: Greenhaven SRS residents at work.

This Annual Report was produced with the generous assistance of Craftsman Press and Spicers Paper.

Editor/designer: Vivian Carroll.

All photographs by Collin Bogaars unless otherwise acknowledged.



Arts Access is assisted by: the Commonwealth Government through the Australia Council, its arts funding and advisory body; Arts Victoria, a division of the Department of Arts Sport & Tourism; and Health & Community Services. The EASE Venue Access Program is sponsored by the Victorian Health Promotion Foundation.