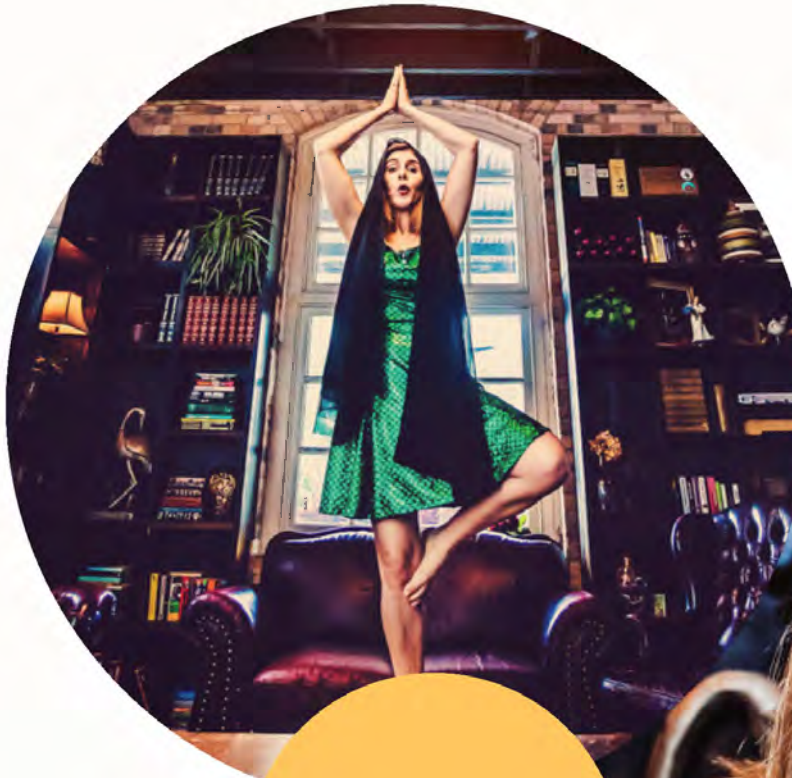


indelabilityarts

# CHAMELEON

BY KAREN LEE ROBERTS



**2022**



PRODUCED BY  
KLR CREATIVE &  
INDELABILITYARTS

# PRESENTER PACK

# COMPANY PROFILE



## KLR CREATIVE:

This is a small company created for the purposes of work performed by Karen Lee Roberts. It was started by Karen Lee Roberts and Sarah Gall (her producer at the time) during the Anywhere Theatre Festival, when her cabaret Chameleon was performed during this. It is now staging her cabaret for its second Adelaide Fringe Festival. The company supports work done by Karen, her pianist Jeff Usher and any other performers used in her productions, such as in performances like Chameleon and Jazz and Blues gigs, both as online and in house shows.

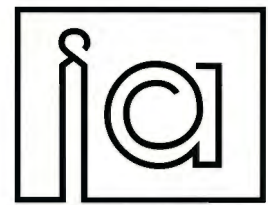


## INDELABILITYARTS:

**indelabilityarts** is an inclusive theatre company that provides professional artistic and training opportunities for artists and community members who identify as having a disability. Our professional ensemble creates original work that communicates the lived experience of each artist across a range of performance modes to challenge the perceptions of audiences and industry alike. We further nurture the social, personal, physical and mental wellbeing of participants through our workshop series that offers ongoing skills development and training for community members with a passion and interest in the performing arts. Through our inclusive practice, we aim to foster acceptance and understanding for those who usually feel marginalised, discriminated against, or excluded from arts practice so that they can access and make work that both reflects their experience and caters to their needs.



# ABOUT THE SHOW



indelabilityarts

## SHOW SYNOPSIS

This hilarious, emotionally charged, cabaret has a relatable moment for everyone! A sweet yet very real insight into dating, fitness and the dreaded high school reunion will double as a great night out and free therapy for all. Come on a wild ride deep into the twisted rabbit hole of the human psyche.

Chameleon brilliantly portrays a new point of view of the norms of mental illness through heartfelt stories of a woman's journey to mental wellness. With original music from the world of the blues, jazz, folk and rock, Chameleon packs a healthy dose of funny for the mind, body and soul.

This show tells the story of Alexandra, played by Karen Lee Roberts (who has a lived experience of mental illness), working through multiple situations every day towards finding clarity. Mr Sunshine, aka Dr Jeff Usher (a blind, jazz-blues legend), is her guiding light on piano.

Chameleon is not just for those challenged by mental health issues, it is for all people in the community. Each person out there has a friend, a family member, or a little part of themselves that identifies. It is entertaining, educating and great fun for a mature audience.

The show was written by Karen Lee Roberts as a way to enlighten people about mental health issues, through examples of her own journey to achieving wellness. She wanted to educate them by means of entertainment, in a funny and moving fashion, to bring hope and encouragement. It has evolved into the wonderful show it is presently, and opens up important conversations in the community.



## ARTFORM

Cabaret  
comedy  
drama





indelabilityarts

# ACKNOWLEDGEMENTS

**Writer: Karen Lee Roberts**

**Director: Catarina Hebbard**

**Lighting Designer: David Sakko:**

**Sound Designer: David Sakko**

**Composer: Karen Lee Roberts**

**Incidental Music: Jeff Usher**

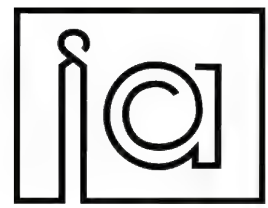
**Costume Designer: Rebecca Dostal**

**Performers: Karen Lee Roberts & Jeff Usher**





# BIOGRAPHIES



indelabilityarts



**KAREN  
LEE  
ROBERTS**

Karen has performed extensively in Australia the United Kingdom, Malaysia and the USA. She has performed solo and with **indelabilityarts** Theatre Company at various locations including the Brisbane Powerhouse, LA Boite Theatre, QTC, RPAC and in the Anywhere Theatre Festival and The Adelaide Fringe Festival, where in 2020 her show Wilbur the Optical Whale won two awards. She performed with Restless Theatre Company at the Bleach Festival for the Commonwealth Games. This show won a Helpmann Award. Her cabaret Chameleon has also played at the Adelaide Fringe and The Butterfly Club in Melbourne.

Jeff Usher has been active on the Brisbane and Australian jazz scene for four decades, starting with his earliest appearances at the former Qld Jazz Action Society at Gardens Point Campus Club and at Brisbane Jazz Club in 1980. Since then, Jeff has built a considerable reputation across Australia, not only as a band leader, but also as a solo pianist, composer/songwriter, arranger, vocalist and music educator. Jeff's career has included performances and workshops in France, India, Indonesia, South Africa and Sri Lanka.



**JEFF  
USHER**



**DAVID  
SAKKO**

In recent times David has supported Karen Lee Roberts Creative's production of It's Not Easy Being Green (Chameleon) as assistant technician, and **indelabilityarts'** production of Look Mum, No Hands at the 2018 Adelaide Fringe Festival as assistant technician and stage hand. He has also supported Karen Lee Roberts Creative at the 2018 Anywhere Theatre Festival as lead technician. David has also further developed the LX cues for the 2019 version of Chameleon. In addition he has also designed and assembled a portable theatrical lighting set, including LED tri-colour PAR lights controlled from a PC using a wireless DMX system, for use in venues without existing light rigs.

# PERFORMANCE SPECIFICS



## TOURING AVAILABILITY

---

1/02/2023-30/12/2024

## DURATION

---

60 MINS | NO INTERVAL

## SUITABLE VENUES

---

The show is suitable to perform in most venues. It can be a hall, a bar, a very small space or a very large space. We are adaptable and only need space for a keyboard, microphone, a waist height stool that can hold glasses, and chair that can be stood upon. (4m x 3m space at least)

## MAXIMUM NUMBER OF PERFORMANCES PER WEEK

---

5 performances

## MINIMUM BREAK BETWEEN PERFORMANCES

---

24 hours

## LICENCING AGREEMENTS

---

Not applicable

## APRA OBLIGATIONS

---

Not applicable

## TOURING PERSONNEL

---

The touring party consists of 3 people.

Karen Lee Roberts | Performer

Jeff Usher | Performer

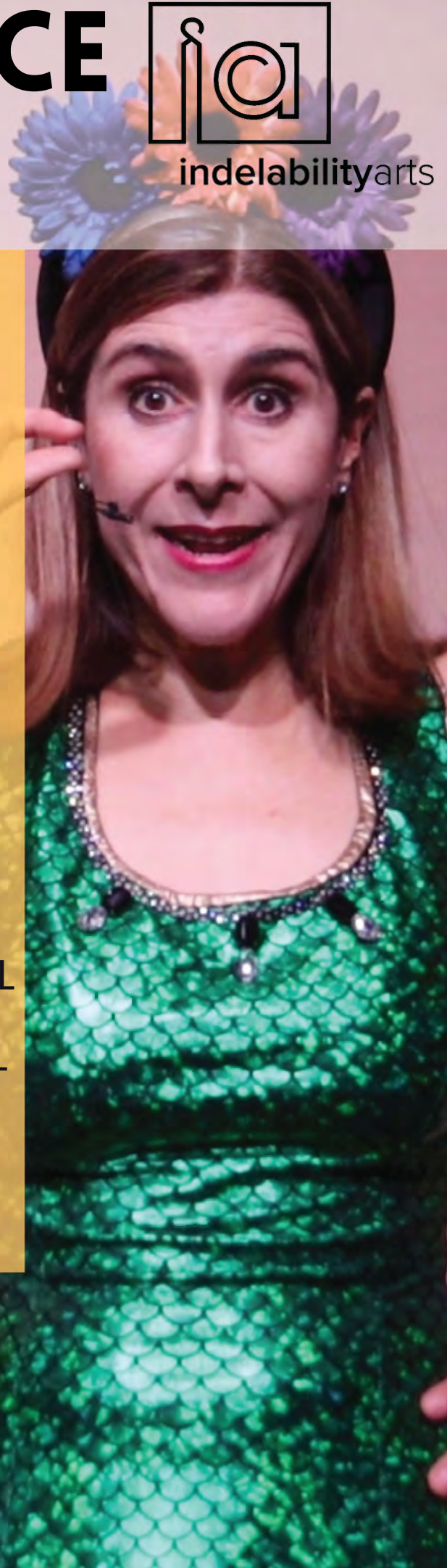
David Sakko | Technician

# PERFORMANCE HISTORY



indelabilityarts

- 
- 2022** PIP THEATRE
  - 2022** HOME OF THE ARTS
  - 2022** RPAC STAGE SESSIONS
  - 2022** ADELAIDE FRINGE
  - 2020** WYNNUM FRINGE FESTIVAL
  - 2020** QLD CABARET FESTIVAL
  - 2019** ONLINE PERFORMANCE
  - 2018** ADELAIDE FRINGE
  - 2018** ANYWHERE THEATRE FESTIVAL
  - 2017** ANYWHERE THEATRE FESTIVAL
  - 2016** ROOM TO PLAY
  - 2015** QUEENSLAND THEATRE





# TARGET AUDIENCE



The performance is for a 15+ audience, both those with a lived experience of mental health issues and the general community. We plan to market to mental health organisations and community groups as well as the general public.

## AUDIENCE ENGAGEMENT OVERVIEW

### PRE SHOW WORKSHOP | \$25 FOR 1 HOUR

1 hour singing workshop with cabaret singer and performer Karen Lee Roberts and pianist Jeff Usher. Learn how to harness your voice, unleash those vocal chords, discover how to turn that rhyme into a tune. You will leave feeling invigorated, inspired and ready to write your own cabaret.

Karen will explore a range of music styles and tunes with the group and will tailor these choices based on the participants present. Participants will also engage in writing their own song, Karen will give you the tools needed to start writing and creating your own magic. You will be able to sing your song accompanied by Jeff on keyboard, and have created a piece of music to share with the group.

Connecting to the community, particularly the disability community, is so important with regards to inspire disabled people to express themselves and share their stories. Karen's cabaret is all about mental wellness, and art, in this case singing and songwriting, is a creative outlet for people to unleash their inner most feelings and emotions and be vulnerable in a safe environment. It connects and engages the community and provides access in the form of a cathartic type of therapy.

The workshops Karen has previously facilitated have been very successful in bringing participants much joy and inspiration. They feel safe and that they can explore without fear of judgement.





indelabilityarts

## POST SHOW CHAT | RUNS FOR 30 MINS

We offer post-show Q&A sessions for audience members and would encourage members of the audience to chat about elements of the show they connected with and would encourage a shared platform where audience members can share their lived experiences with mental health if so desired. The objective of this Q & A is to answer any questions relating to the content of the cabaret, or what has resonated with audiences. They may have questions relating to Karen's journey throughout the show and her individual battles. We want to ensure the space is kept a safe and inviting space post show where mental health is at the forefront of the post show conversation.

### TARGET AUDIENCE FOR COMMUNITY ENGAGEMENT

Anyone 15+ would be welcome to the pre show singing workshop, particularly those within the disability community. The post-show Q & A is open to everyone attending the show. We would market the pre show workshop through mental health organisations and community groups.





# MARKETING

## MARKETING COPY



indelabilityarts

### ONE LINE

Come on a deep dive down the rabbit hole of the human psyche.

### SHORT

This hilarious, emotionally charged, one woman cabaret has a relatable moment for everyone! A sweet yet very real insight into dating, fitness and the dreaded high school reunion will double as a great night out and free therapy for all. Come on a wild ride deep into the twisted rabbit-hole of the human psyche.

Chameleon brilliantly portrays a new point of view of the norms of mental illness through heartfelt stories of a woman's journey to mental wellness. With original music from the world of the blues, Chameleon packs a healthy dose of funny for the mind, body and soul.

### EXTENDED

This hilarious, emotionally charged, one woman cabaret has a relatable moment for everyone! A sweet yet very real insight into dating, fitness and the dreaded high school reunion will double as a great night out and free therapy for all. Come on a wild ride deep into the twisted rabbit-hole of the human psyche.

Chameleon brilliantly portrays a new point of view of the norms of mental illness through heartfelt stories of a woman's journey to mental wellness. With original music from the world of the blues, Chameleon packs a healthy dose of funny for the mind, body and soul.

This show tells the story of Alexandra, played by Karen Lee Roberts (who has a lived experience), working through situations in her every day and finding clarity. Mr Sunshine, aka Dr. Jeff Usher (a vision impaired jazz blues legend), is her guiding light on piano.

Chameleon is not just for those challenged by mental health issues, it is for all people in the community. Each person out there has a friend, a family member, or a little part of themselves that can relate. It is entertaining, educating and great fun for a mature audience.

This high energy cabaret follows the rise above adversity of one woman struggling against the odds. It is as funny as it is heart-warming, informing about the prevalent issue of mental health, and is sure to entertain. Featuring quirky text and original music, it's a meaningful look into survival.

The show is primarily to entertain, but it educates at the same time, in an often hilarious, always moving fashion. This cabaret brings up issues of vital social importance whilst taking you on a wild ride through the extremes of a person's personality; a journey of highs and lows, laughter and tears.



# MARKETING ingoude Company SUMMARY



Chameleon is specifically designed to engage adult audiences of all types to prompt discussions around mental health and well-being. We will also make personal contact with mental health organisations, disability and local community groups. It is also important for us to contact and involve local mental health advocacy and support organisations, to provide audience members with local information and access points if needed.

For our public performances we have used social media platforms, including contacts with local newspapers and radio, posters and flyers in the local areas. These have been most successful in previous marketing campaigns. This involves daily posts on Facebook, Instagram, and Twitter and fortnightly promotional videos on YouTube and our website.

## MARKETING MATERIALS

Flyers and posters will be made available to you, and you can access a PDF of these. Behind the scenes interviews with Jeff and Karen will also be accessible.

# MEDIA QUOTES & REVIEWS



indelabilityarts

What a storyteller is the amazing Karen Lee Roberts. Last night Michelle Boyd and I went to a piece of real cabaret in the form of Chameleon. Karen has written, composed and sings this truly great work for theatre. This is a wide spread look at so many aspects of living with Mental Wellness. Barry Stone, audience member.

**“Theatre is the perfect vehicle to express and deliver important messages such as discussing mental health. Chameleon brought to light what is unseen, often misinterpreted and at times, uncomfortable to breach. Chameleon absolutely deserved the standing ovation it received. Chameleon is a definite must-see for a revealing insight into living with mental health, and its highs and lows.”**

Harmonie Downes, Reviewer

**Life may be a cabaret (“old chum”)\*, but Roberts and Usher ably demonstrate that cabaret is also the perfect form to provoke discussions about life’s highs and lows. Alexandra poses the early question “Is it kosher to speak of subjects like this?” In this show, Roberts and Usher answer that question in the affirmative.**

Catherine Lawrence, Reviewer



**‘I had the absolute privilege of seeing Chameleon at The Wynnum Fringe Festival in 2020. It was an absolute delight! Karen is a world class talent who has that rare gift - to connect directly to the hearts of her audiences!’**

Clint Bolster



# IMAGE & VIDEO LINKS



indelabilityarts

## VIDEO LINKS



Trailer: <https://www.youtube.com/watch?v=qNHy-27emkY>

Showreel: <https://vimeo.com/203254842>

TRAILER CAN BE DOWNLOADED...[HERE!](#)

## IMAGES



A collection of hi-res images are available to download...[HERE!](#)

## WEBSITE



<https://www.indelabilityarts.com/chameleon>

# CONTENT WARNINGS

Performance contains adult content (moderate sex scene), 15+ rated language, reference to self-harm and suicide (delicately managed).

**Photograph credits:** David Sakko and Katie Bennet.

**Photograph descriptions:** In green dress and orange suit & on stage performing Chameleon; David Sakko

**Promotional shots:** More staged, in green dress and orange suit; Katie Bennet





# PRODUCTION DETAILS



## EXAMPLE SCHEDULE

We would require access to the venue four hours before a performance to do a sound and lighting check and set up keyboard, microphones, stool and chair.

TIME	Intention	Who is required
.....		
<b>10.00am</b>	<b>Unpack truck</b>	
<b>11.00am</b>	<b>Set up set</b>	<b>Dave and Karen</b>
<b>12.30am</b>	<b>Sound Check</b>	<b>Dave and Karen</b>
<b>1.00pm</b>	<b>Lighting Check</b>	<b>Dave, Karen, Jeff</b>
<b>1.30pm</b>	<b>Lunch</b>	<b>Dave, Karen, Jeff</b>
<b>2.15pm</b>	<b>Dress Rehearsal</b>	<b>Dave, Karen, Jeff</b>
<b>3.45pm</b>	<b>Finish dress rehearsal</b>	<b>Dave, Karen, Jeff</b>





## STAGE

---

The minimum stage dimensions are 4m x 3m and the set consists of Jeff's keyboard, a waist height stool which glasses can be placed on, a chair which could be stood upon, and a microphone (with boom mic for Jeff).

### KLR CREATIVE TO SUPPLY

Standard Microphones if not travelling by air.

### VENUE TO SUPPLY

Chair which can be stood upon, stool waist height which glasses can be placed on, microphone stands, microphones if traveling by air.

## LIGHTING

---

- . Basic wash with face light.
- . 3 x white zones (PAR can or similar)
- . Specials, centre, right and left downstage
- . Blue, Purple or Green Wash
- . Yellow, Orange or Red Wash

### KLR CREATIVE TO SUPPLY

We will provide all lighting if not travelling by air.

### VENUE TO SUPPLY

3 x fixed PAR cans in white washes  
Blue, purple or green wash, yellow, orange or red wash

## SOUND

---

Keyboard, head mic and two cordless microphones if available.

### KLR CREATIVE TO SUPPLY

We will supply a sound desk, standard microphones and PA if not travelling by air.

### VENUE TO SUPPLY

Sound desk and PA, and standard microphones if we are travelling by air. Head Mic is only needed if the venue is large.

## AV

---

One projector. We can project onto any backdrop.

Please note: this show is not reliant on the projection so can go ahead if this is not available in the venue.

### KLR CREATIVE TO SUPPLY

One Projector, laptop and chord if not travelling by air.

### VENUE TO SUPPLY

Projector and chord if travelling by air. We will bring the laptop.

## WARDROBE

---

We supply our own costumes.

### VENUE TO SUPPLY

If we were bumping in on the same day we would require 2 dressing rooms.

## CREW REQUIRED FROM VENUE

---

One crew member who is responsible for the projector (rigging if necessary).

## FREIGHT NOTES

---

If we are arriving by van, we would need access to a loading dock to unload the sound and lighting equipment and set.

## CRITICAL ISSUES

---

Jeff Usher is Blind, so having a venue that is accessible is preferable.

## TECHNICAL SUMMARY

---

The staging is easily adaptable for small spaces for the keyboard player and one actor. Props needed include a chair and stool with simple lighting and 2 standard microphones. A head mic would be required for larger venues.





# COSTS



## PER SHOW

---

\$3500 per show  
plus 10% royalties

## PER WEEK

---

\$6218 per week -  
max 5 shows per  
week

## REMOUNT

---

\$660

# A DOUBLE BILL CABARET



We have our two cabaret shows, 'Chameleon' and 'The No Bang Theory' available to book as a double cabaret. Have both shows perform back to back with a short interval in-between! We have tested this previously and it was a huge success on the Gold Coast at HOTA.

## **COSTS**

### **PER PERFORMANCE**

\$7500 for both shows

### **DOUBLE BILL FOR A WEEK**

\$12,436

### **REMOUNT COSTS FOR BOTH**

\$1815

### **AUSLAN INTERPRETING**

Per performance for  
both shows \$825.

Per show \$415

### **MAXIMUM PERFORMANCES IN A WEEK**

Maximum 5 per week

## **CHAMELEON + THE NO BANG THEORY**





# CONTACTS



## REBECCA ALEXANDER

(Producer, programming,  
publicity)



0437 447 785



rebecca@indelabilityarts.com

## CATARINA HEBBARD

(Producer, programming,  
publicity)



0418 719 618



catarina@indelabilityarts.com

---

## LAURA BAMFORD

(Producer)



0478 897 823



producer@indelabilityarts.com

---

## GEORGINA BULLOCK

(Marketing)



0450 155 600



programs@indelabilityarts.com