



ARTS PROJECT AUSTRALIA

Arts Project Australia  
ANNUAL REPORT 2011

PER  
361  
A1  
2011





ARTS PROJECT AUSTRALIA



## Our Mission

To be a centre of excellence that supports artists with intellectual disabilities, promoting their work and advocating for their inclusion within contemporary art practice.

above Ian Gold Not titled 2010 acrylic on canvas 41 x 41cm  
front cover Nhan Nguyen Not titled (two birds on black) 2010 ink on paper 57 x 27cm  
back cover Alan Constable Not titled 2008 ceramic 14 x 45 x 32cm



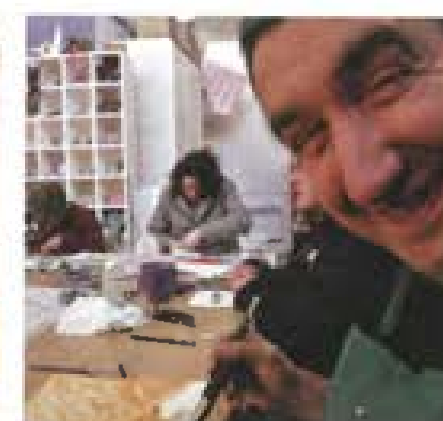
Terry Williams  
Not titled 2010  
ceramic  
26 x 9 x 8.5cm

## Contents

Board and Staff	2
Supporters and Volunteers	2
A Message from our Patron	3
About Arts Project Australia	4
President's Report	5
Executive Director's Report	6
Artists	8
Exhibitions Report	10
Financial Statements	15
Independent Audit Report	24
Wilfred Clarke Obituary	25



Alan Constable



Valerio Ciccone



Erica Berechree



Per  
361  
42



## Board and Staff

### Board of Management

Jonah Jones	President
Catherine Easton	Vice President
Sean Gaskell	Public Officer
Mashelle Parrett	Treasurer
Barbara Ajzenberg	Member
Rosemary Brennan	Member
Wendy Foard	Member
Kay Ronc	Member
Norman Rosenblatt	Member

### Staff

Sue Roff	Executive Director
Sandy Fernee	Business Manager (from Feb 2011)
Samantha Roberts	Business Manager (until Feb 2011)
Pierrette Boustany	Studio Manager
Sim Luttin	Gallery and Exhibitions Manager
Cheryl Daye	Projects and Development Manager
Penny Hunt	Registration Coordinator
Melissa Petty	Gallery Assistant
Allison O'Callaghan	Studio and Gallery Administration Assistant
Brad Rusbridge	Gallery Technician
Christina Hayes	Artworker - Materials
James McDonald	Artworker - Occupational, Health and Safety/Gallery Technician
Emily Bissland	Artworker - Animation
Katie Jacobs	Artworker - Ceramics
Jakob Schmitt	Artworker - Printmaking
Lyn Young	Artworker - General/Gallery Technician
Anne Warren	Artworker - Digital Imaging
Camille Hannah	Artworker - General
Bernadette Trench-Thiedemari	Artworker - General
Rachael Guy	Artworker - General (casual)
Katrina Kell	Artworker - General (casual)
Elyss McCleary	Artworker - General (casual)

### Life Members

Cheryl Daye  
Kitty Ginter  
Rita Mantell  
Sally Shrimpton

### Members

(includes Life Members)  
84

## Supporters

We are grateful for the generous and continued support of our government, philanthropic and corporate funders.

### Government

Department of Human Services  
Department of Families, Housing, Community Services and Indigenous Affairs  
Council of Adult, Community and Further Education - Northern Metropolitan Region  
Arts Victoria.

### Philanthropic

The Myer Foundation (2009 Commemorative Grants Program)  
The Dyson Bequest  
John T Reid Charitable Trusts  
Helen MacPherson Smith Trust  
The Kimberley Foundation  
Lord Mayor's Charitable Fund  
The Amelia Eliza Holland Trust  
The Gandel Trust.

### Corporate Partners

ARA Consultants  
Leonard Joel  
RACV  
Zerella Investments.

### Donors

Arts Project Australia is grateful to the many individuals who have made financial or in kind gifts to assist our important work, including the Estate of Dr Joseph Brown.

## Volunteers

### Volunteers

Arts Project Australia would like to acknowledge the following volunteers who assisted the organisation over the past twelve months:

Meg Andrew  
Joe Argenzio  
Ekta Budhathoki  
Camillo de Luca  
Elyse de Valle  
Kerstin Elliott  
Philippa Gerrard  
Melissa Hart  
Rebecca Hartley  
Susan Heffernan  
Richard Keville  
Helen Laffin  
Jan Lewis  
Catherine Lee-Martin  
Rob McHaffie  
Claire McKee  
Jodie Miller  
Michael Pearce  
Sean Smith  
Daniel Taylor  
Amy Wachtel  
Ben Walsh  
Jessica Williams

### Student Placements

James Maddocks  
Carter Howlet  
Laura Martin  
Daniel Moulds  
Brad Rusbridge  
Marise Rush  
Emily Taylor  
Kai Ting Yeoh

We would like to thank Mary Hoban who edited this report and Kate Strother from McClure Multimedia for the design.

## A Message from our Patron



Arts Project Australia is located in a wonderful naturally-lit converted warehouse with an art studio upstairs, a kiln, archive and exhibition space downstairs.

The artists all have disabilities. But not as artists. Their art communicates their field of fascination. They paint, collage, sculpt, do ceramics, soft sculpt and do digital art. The "bubble" of concentration between the working artists and their work is almost tangible. I love seeing time stand still for the artists as they completely engage. Their work is a labour of love, personally meaningful and filled with joy. Arts Project Australia encourages and enables these artists to express themselves and explore their creativity, so they can share that with others.

**Thérèse Rein**



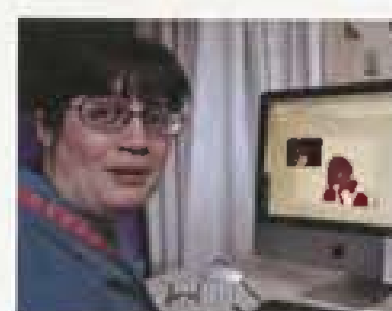
Jonah Jones, Tim Williams and Thérèse Rein



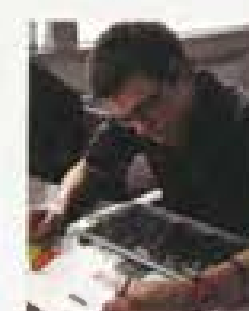
Terry Williams



Penny Hunt and Allison O'Callaghan



Lisa Reid



Cam Noble



Filmcrew with Steven Ajzenberg



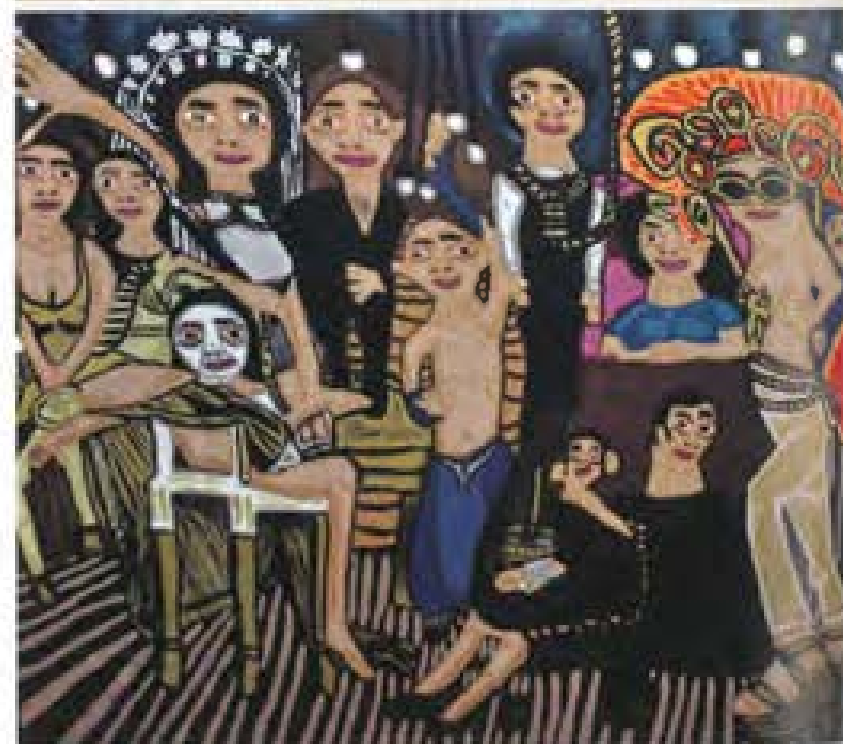
## About Arts Project Australia

Our mission is to be a centre of excellence that supports artists with intellectual disabilities, promoting their work and advocating for their inclusion within contemporary art practice.

Since its inception, Arts Project Australia has continued to strive for excellence, both in the quality of the exhibitions presented and the quality of the innovative studio program. Established in 1974 as Arts Project for the Mentally Retarded, we have continually been a leader and innovator in the arts and disability sectors. We were the first full-time arts studio in Australia for artists with an intellectual disability, and over the past 35 years have built an enviable reputation nationally and internationally for the creative and individual studio philosophy, as well as the outstanding artwork produced there. We promote our artists and their work to the broader community, and our artists enjoy exhibition opportunities in a range of local, national and international galleries. Artists are also represented in many public and private collections.

Our Northcote studio sees 140 artists with an intellectual disability attending each week. The Arts Project Australia studio functions in a similar way to a tertiary art environment where artists work on developing an original and authentic "voice" supported by artworkers (all professional artists) who provide feedback and critical advice. Here, art is not taught, but rather the innate creative direction of each artist is nurtured to elicit works of personal meaning and style. Media includes painting, drawing, ceramics, printmaking, puppetry and animation. Our gallery stages a full annual program of changing exhibitions featuring work by artists from Arts Project Australia as well as the broader community.

We boast a highly qualified and experienced staff, an energetic and committed board and have a strong governance framework. Arts Project Australia has a unique history and approach and has long been recognised as a best practice model for its innovative programs. We are committed to providing sustainable programs in an environment dedicated to visual arts practice.



above: Rob McHeffie *Lisa Reid* 2010 oil on linen 50 x 40cm  
below: Cathy Staughton *The Carnival of Mysteries Melbourne*  
*"Good Death"* 2010 acrylic on canvas 152 x 167cm

## President's Report

The past year for Arts Project Australia has been, in a sense, a sustained period of consolidation. We have done what we do better, and in greater depth. While the focus of the previous year was establishing the framework to drive the Board's vision for the organization, 2010/2011 has been a period of refining and extending initiatives already expounded.

This year marks the end of my three-year term as President and Chairman of Arts Project Australia and presents an opportunity to reflect not only on the last 12 months but on this longer period. At the beginning of this term I presented to the membership a plan embracing four key initiatives for the future: to facilitate a harmonious environment with a stable professional work force; to extend the opportunities for Arts Project Australia artists in the mainstream contemporary art scene, in Melbourne, nationally and internationally; to forge stronger links with government, the corporate and philanthropic sectors, and the broader community to extend Arts Project Australia's resource and support base; and to strengthen Arts Project Australia's culture through interaction with carers and Arts Project Australia members, management and staff, and external stakeholders.

It is evident that we have moved forward on all these initiatives. Arts Project Australia is now generally a very happy place, with stable management and staff. Opportunities have been extended for our artists and closer ties have been established with public and commercial galleries. The resource base of Arts Project Australia has been diversified and expanded, through government, the corporate and philanthropic sectors, and private giving. And there has been a more substantial and relevant dialogue with artists, members and other stakeholders over the past three years.

While significant achievements have been made, this work is ongoing. The environment at Arts Project Australia is dynamic, and there is still much to do to ensure a confident and substantial future for our constituency: the artists. In this environment there will always be challenges which need to be acknowledged and met.

The progress over this period is to a large extent due to the commitment of the Board, management and staff. The Board works well and each member contributes effectively. The management, staff and volunteers, most ably lead by our dedicated and energetic Executive Director Sue Roff, continue to perform very diligently. I acknowledge and thank them all for their contribution.



Thérèse Rein and Jonah Jones

This progress could not have manifested in the way, or to the extent, that it has without the support of our partners and stakeholders – existing and new.

Arts Project Australia continues to be funded by the Victorian Department of Human Services, the Federal Department of Family and Housing, Community Services and Indigenous Affairs, and ACFE (Adult, Community and Further Education). We thank them for their ongoing support. In addition, this year Arts Project Australia has received generous support from Arts Victoria.

Arts Project Australia is also assisted with financial and in-kind support from an expanding range of philanthropic foundations, the corporate sector, and many private individuals.

Our philanthropic supporters, including the Myer Foundation, the Amelia Eliza Holland Trust, the Kimberley Foundation, the Dyson Bequest and the Gandel Trust, are joined this year by several new philanthropic partners: the John T Reid Charitable Trust, the Helen MacPherson Smith Trust, The Trust Company, and the Lord Mayor's Charitable Trust.

Similarly, long-time corporate supporter ARA Consultants is joined by the RACV (2011 Exhibition Partner), Leda Constructions, Leonard Joel, and Leeuwien Estate Wines. And in addition to numerous private charitable gifts, this year we received a most generous bequest from the Estate of the late Dr Joseph Brown.

Finally, I warmly welcomed Thérèse Rein to the Arts Project Australia family as our Patron this year. Already an advocate for the organisation before we invited her to be Patron, we are delighted that Thérèse will contribute to the future of Arts Project Australia.

Once again, on behalf of the artists, the management, staff and volunteers, and the Board of Arts Project Australia, I thank you all for your support of, and commitment to, Arts Project Australia.

Jonah Jones



## Executive Director's Report

For a small organisation, Arts Project Australia has packed quite a punch in the past 12 months. Our talented artists have been involved in a broad range of artistic projects and continue to joyously produce extraordinary artwork every day in our studio. Our dedicated team of staff and volunteers has put an incredible amount of time and effort into continuing our mission as a centre of excellence.



Kaye McDonald  
Not titled (yellow, brown and  
blue string of beads) 2010  
ceramic 28 x 18 x 3cm



Sue Roff

There is still a high level of demand for participation in the studio program, and we have a waiting list to which we endeavour to respond as soon as places are available. Our ceramics, animation and printmaking programs continue in popularity and are producing wonderful artworks. Artsworke Rachael Guy was successful in gaining a grant from the Australia Council enabling her to run 3D/puppetry sessions one day a week, and due to the generosity of the Kimberley Foundation, we have been piloting a new Digital Imaging program since January. With 140 artists at differing stages of development it is important to continue to offer new programs at many levels which stimulate, enthuse and provide new ideas.

In addition, studio artists have had the opportunity to participate in a number of special projects during the year, including Harrell Fletcher's *The Sound We Make Together* at the National Gallery of Victoria, our amazing Portrait Exchange where 15 Arts Project Australia artists worked with 15 external artists to create portraits. This exhibition was so successful that many of the artists' relationships have extended well beyond the time frame of the project and are continuing to work together on other collaborations.

And a big change to the studio this year was the installation of brand new double-glazed windows - a massive project that has taken nearly two years to see to fruition, through fundraising (big thanks to the generosity of the Department of Human Services, John T Reid Charitable Trusts, Helen MacPherson Smith Trust, the Trust Company and Leda Constructions). A marked change from the original drafty warehouse windows - artists are now working in a more comfortable ambient temperature, and we look forward to a more energy-efficient studio as a result.

The gallery has been extremely busy. In addition to mounting nine exhibitions in our own gallery during the year, we also participated in the *2010 Melbourne Art Fair* in August, where our stand attracted many new collectors and buyers, and, on average, an artwork was sold every 15 minutes (we believe this sets a record at an Art Fair for any exhibitor!)

Cathy Staughton was commissioned to create backdrops to the Melbourne International Festival's *Carnival of Mysteries*, Warren O'Brien won the Annecto Art Prize, Lisa Reid was a finalist in the Rick Amor Print Prize and Fisher's Ghost Award, Alan Constable was a finalist in the Hobart Art Prize and Gold Coast Ceramics Prize, and numerous other artists had successes and exhibitions outside of Arts Project Australia.

Patrick Francis Not titled (two figures) 2010  
acrylic on paper 38 x 28cm



As a result of additional demand, we are now opening the gallery all day on Saturday all year. Our marketing efforts continue to develop, with our entry into the social media sphere (please join us on Facebook and Twitter), and the appointment of a contract publicist to help promote the many exhibitions and stories developed by Arts Project Australia. We were also proud to be named a finalist in the Melbourne Awards for Contribution to Community.

We have been working on documenting our permanent and archival collections, and we received funding to have a significance assessment done, which confirmed that our collection is not only an important one, but may have international resonance.

On an operational note, we underwent another successful audit which looked at our business practices and adherence to the National Disability Standards, updated our Policies and Procedures Manual, and commenced negotiations for a new Enterprise Bargaining Agreement

Paul Hodges Not titled (girl sitting on a tree stump) 2010  
ink on paper 56 x 38cm



with our staff. Staff have received training in Word Sign, autism, quality assurance and challenging physical behaviours and participated in a strategic planning forum.

We have been fortunate to gain further generous financial support this year, with new partners RACV and Leonard Joel, and further funding from Arts Victoria for our exhibition program. We thank our major funders, the Department of Human Services and the Department of Families, Housing, Community Services and Indigenous Affairs for their continued support and genuine interest in, and commitment to, our important work.

Finally, I would like to thank the Board, staff, volunteers and members who make working for Arts Project Australia meaningful and exciting. And, of course, our wonderful artists, who make Arts Project Australia the fulfilling and creative workplace it is today.

Sue Roff



## Artists

Arts Project Australia would like to acknowledge the following artists who attended the studio over the past 12 months:



Terry Williams *Robot* 2010  
ceramic 21 x 16 x 5cm

Mark Adams  
Steven Ajzenberg  
Gina Aloisi  
Alvaro Alvarez  
Michael Amond  
Fulli Andrinopoulos  
George Aristovoulou  
Samartha Ashdown  
Andrew Barbour  
Geoffrey Barnett  
John Bates  
Desmond Beavis  
Peter Ben  
Erica Berechree  
Dorothy Berry  
Anne Brabet  
Alec Brimage  
Robert Brown  
Tegan Bruders-Gray  
Monica Burns  
John Button  
Antonella Calvano  
Michael Camakaris  
Dionne Canzano  
Nicholas Capaldo  
Marisa Cappelli  
Riccardo Cardinale  
Kieren Carroll  
Peter Cave  
Samraing Chea  
Isaac Chester  
Debra Chipperton  
Valerio Ciccone  
Boris Cipusev  
Wilfred Clarke  
Colleen Clancy  
Ashlee Cochrane  
Elizabeth Coleman  
Gavin Conabere  
Callie Coney  
Alan Constable  
Alan Cooke  
Leo Cussen  
Wendy Dawson  
Emily Dober  
Alanna Dodd  
Robyn Doherty  
Beverley Duncombe

David Edgell  
Lauren Eldridge  
Dawn Edward  
Scott Ferguson  
Samuele Fenech  
Sandra Fielding  
Martin Forster  
Patrick Francis  
Inmaculada Gabriele  
Ian Gold  
Lai Lai Gong  
Joan Gowers  
Torii Hanger  
Brigid Hanrahan  
Melinda Harrison  
Valerie Hawkes  
Kelvin Heffernan  
Paul Hodges  
Ruth Howard  
Miles Howard-Wilks  
Richard Hung  
Billy Hurley  
Thomas Iacono  
Venuzza Iaconis  
Elizabeth Ivanoff  
Chris Jackson  
Bethany James  
Michael Keon  
Michael Kovacevic  
Stefanie Kraerner  
Penry Kritikos  
Kate Knight  
Bobby Kyriakopoulos  
Monica Lazzari  
Adrian Lazzaro  
Joceline Lee  
Allan Liebe  
Fiona Longhurst  
Anne Lynch  
Wayne Marnell  
Julian Martin  
Chris Mason  
Toby Matheson  
Graham McBride  
Karen McCullough  
Kaye McDonald  
Miranda Millane  
Bernard Miller

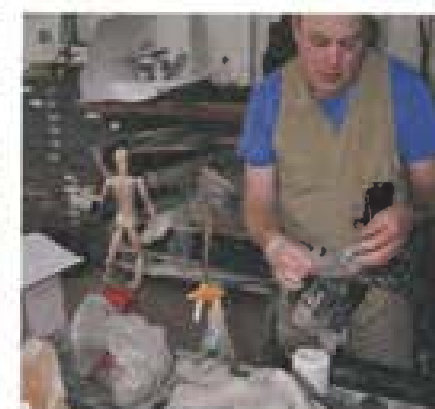
Perry Mitronatsios  
David Mossop  
Donald Muir  
Stanley Newbury  
Jenny Ngo  
Nhan Nguyen  
Cameron Noble  
Jodie Noble  
Tim Noble  
Scott Nye  
Chris O'Brien  
Warren O'Brien  
Daniel Pace  
Michael Paul  
Steven Perrette  
Christopher Philbey  
Gavin Porter  
Josef Power  
Kendell Prakash  
Helen Reddan  
Chloe Reid  
Lisa Reid  
Kieran Roberts  
Anthony Romagnano  
Michael Rudov  
Raymond Ruff  
Adrian Salvatore  
Rebecca Scibilia  
Kellie Seesdman  
Aidan Sefo  
Laura Sheehan  
Denzel Shotade  
Brendan Slee  
Mark Smith  
Catherine Staughton  
Malcolm Sturrock  
Georgia Szmeling  
Fiona Taylor  
Michael Trasancos  
Philip Truett  
Cameron Veitch  
Michael Von Roehl  
Kelly Williams  
Terry Williams  
Timothy Williams  
Catherine Willis  
Steven Worrell  
Stewart Wylie



Chris Mason *Not titled (nude scratching her back)* 2010 ceramic 37 x 34 x 25cm



Steven Perrette



Chris Mason



Fiona Longhurst



Fulli Andrinopoulos *Not titled (orange and blue)* 2010 ink on paper 14 x 14cm



## Exhibitions Report



Karen McCullough *Driving Along 2011*  
ceramic 11 x 10.5 x 5cm



Alan Constable at *Viewfinder* opening



*Colour my World* opening

The past year was a busy time for the gallery, with a thriving internal and external exhibitions program featuring all art media from the studio including painting, drawing, printmaking, 3D, ceramics, puppetry and animation. Arts Project Australia artists' work was featured in 12 internal solo and group exhibitions, and over 29 external exhibitions, art prizes and awards throughout Melbourne and Australia!

The 2010/11 program was exceptional, showcasing the immense variety of artwork created by our studio artists.

Exhibitions in the internal line-up featured solo exhibitions by established Arts Project Australia artists Wayne Marnell, Steven Worrell and Steven Perrette. The highlight for the year was the major survey exhibition of Alan Constable *Viewfinder* curated by Cheryl Daye, which brought together a rich collection of artwork spanning Constable's successful 20 year career.

Our external program included curated exhibitions in major external galleries and institutions such as the National Gallery of Victoria, as well as successful submissions in many noteworthy art prizes and awards. Definite highlights were the *Melbourne Art Fair*, our most successful Art Fair to date; working on the Harrell Fletcher's *The Sound We Make Together* project with Alex Baker, Senior Curator Contemporary Art at the NGV, Federation Square; and the visit by the ABC's Fenella Kernebone from Art Nation to Arts Project Australia for a feature story on *The Portrait Exchange* curated by Lindy Judge - an exhibition of portraits by studio artists and non-Arts Project Australia artists.

Arts Project Australia continues to lease artwork to corporate, private and public agencies providing greater exposure for the artists and Arts Project Australia in the wider community.

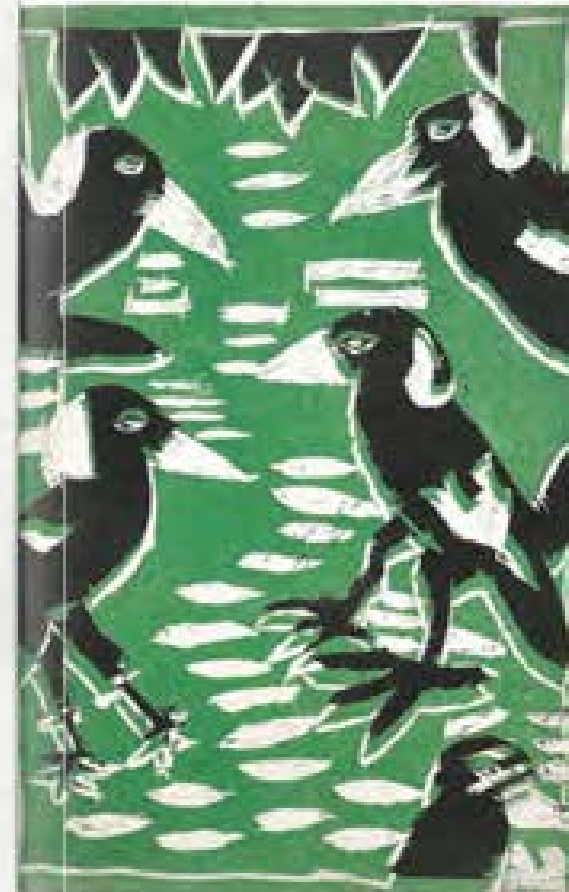
This year Arts Project Australia joined social media networks Facebook and Twitter in an effort to diversify and connect with new audiences. Our 'friends' are increasing daily and the gallery staff are enjoying communicating and interacting with artists and the broader public in new and creative ways.

The success of the gallery and exhibitions program would not be possible without the assistance of our committed volunteers, who provided much-needed support to the gallery and various events, enabling us to continue to present our artists' work to the public.

Arts Project Australia looks forward to an exciting and challenging exhibitions program over the next 12 months, where we aim to support and promote our artists through high quality internal and external exhibition opportunities.



Dorothy Berry *Not titled (fashion model)* 2010  
pastel on paper 58 x 38cm



Fiona Taylor *A group of magpies on a branch*  
2009 lino print on paper 31 x 20cm

## Internal Exhibitions Program



Catherine Bell and Cathy Staughton  
at *Portrait Exchange* opening night



Karen McCullough *Fawn* 2010  
ink on paper 35 x 40cm

### Sweet Relief

Exhibition 24 Jul-8 Sep 2010  
Opening and gallery talk Sat 24 July  
from 3-5pm

Curated and opened by artworker Jakob Schmitt

*Sweet Relief* was an exhibition of relief prints, predominately lino-cuts and mono prints by artists who participated in printmaking.

### Wayne Marnell Solo

Exhibition 24 Jul-8 Sep 2010  
Opening and gallery talk Sat 24 July  
from 3-5pm

Curated by artworkers Jakob Schmitt and James McDonald

*Wayne Marnell Solo* offered a vibrant and captivating overview of the artist's distinctive practice. Fuelled by his fascination and adoration of popular culture, Marnell's work often chronicles the action and adventure of the Hero.

### Portrait Exchange

Exhibition 11 Sep-16 Oct 2010  
Opening and gallery talk Sat 11 Sept  
from 3-5pm

Curated by Lindy Judge

*Portrait Exchange* was the result of a project that fostered existing relationships and initiated new ones. It translated shared experiences and visual dialogues between not only sitter and portrait painter, but also between studio artist and non-Arts Project Australia artist.

### Third Dimension

Exhibition 21 Oct-27 Nov 2010  
Opening Wed 20 Oct from 6-8pm

Curated by artworkers Katie Jacobs and Bernadette Trench-Thiedeman

*Third Dimension* was a sensual extravaganza, which invited people to engage with art through sight, sound and touch. The exhibition invited the audience to consider alternative ways that art can engage, excite and inspire.

### Annual Gala

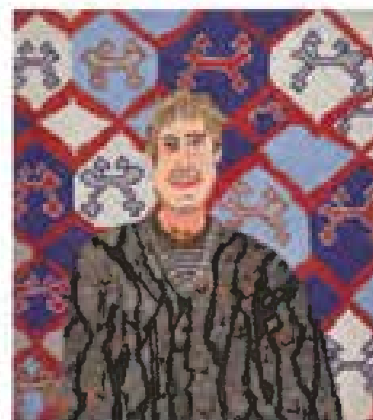
Exhibition 2 Dec-18 Dec 2010  
Opening Wed 1 Dec from 6-8pm

*The Annual Gala* featured a diverse array of work from over 130 artists who participated in its studio program in 2010. Drawing, painting, printmaking, animation and ceramics were showcased in this celebratory exhibition.

### Stock Exhibition

Exhibition 14-29 Jan 2011  
[No opening]

The first exhibition of 2011, *Stock Exhibition* offered an exciting range of work from Arts Project Australia's extensive stockroom, which included canvases, work on paper, animation and ceramics in a salon hung presentation.



Lisa Reid *Rob McHaffie* 2010  
neo colour pencil on paper 45.5 x 37.5cm

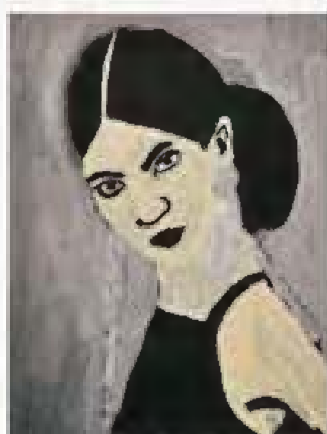


Wayne Marnell *Iron Man* 2010  
pencil and gouache on paper 56 x 38cm





Artwork detail (from left to right) Leo Cussen, Scott Ferguson, Andrew Barbour, Julian Martin, Lisa Reid, Warren O'Brien and Catherine Staughton. Dimensions and mediums variable



Steven Worrell Not titled 2010  
gouache on paper 38 x 28.5cm

### Colour My World

Exhibition 3 Feb-16 Mar 2011  
Opening Wed 2 Feb from 6-8pm  
Curated by artsworkeer James McDonald  
*Colour My World* celebrated the richness and diversity of the Arts Project Australia's palette. The artworks in the exhibition drew on a variety of tones and hues, creating a visual language that invited the viewer to enjoy the breadth of colour that spans the colours of a rainbow

### Steven Worrell Solo

Exhibition 3 Feb-16 Mar 2011  
Opening Wed 2 Feb from 6-8pm  
Having exhibited widely throughout Australia for over a decade, Worrell frequently uses art as a vehicle to convey his immediate thoughts to people around him. This was Steven Worrell's first solo exhibition.

### Subterranean

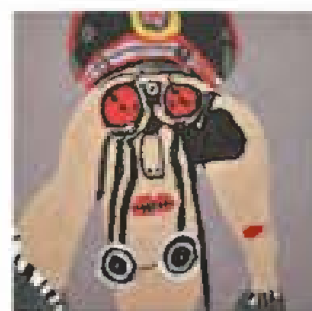
Exhibition 19 Mar to 27 Apr 2011  
Opening Sat 19 Mar from 3-5pm  
Curated by artsworkeer Katie Jacobs  
*Subterranean* showcased bold new possibilities for ceramics. From domestic and functional forms to work referencing popular culture and narrative fiction, the exhibition highlighted the technical experimentation, investigation and discovery underlining the artistic process.



Malcolm Sturrock  
Not titled 2010  
ceramic  
29 x 19 x 11cm



Steven Perrette Not titled 2008  
pencil on card 17.5 x 48.5cm



Alan Constable Not titled (person with binoculars) 2009 acrylic on canvas 71 x 115cm

### Alan Constable Viewfinder

Exhibition 30 Apr-1 June 2011  
Opening Sat 30 Apr from 3-5pm  
Publication launch John Albrecht, Managing Director, Leonard Joel  
Launch of RACV Partnership by Professor Peter Chandler  
Opened by Peter Fay

*Viewfinder* showcased more than 60 works selected from a body spanning more than 20 years and offered new and rich insights into the unique art of Alan Constable. Coinciding with Alan Constable *Viewfinder* was the launch of the first catalogue in the Leonard Joel Series of publications to commemorate significant exhibitions

### This Sensual World

Exhibition 4 Jun-20 Jul 2011  
Opening Sat 4 Jun from 3-5pm  
Curated by artsworkeer Rachael Guy  
*This Sensual World* explored and celebrated the diversity of expressions of human sexuality present in the work of Arts Project Australia's artists.

### Steven Perrette Solo

Exhibition 4 Jun-20 Jul 2011  
Opening Sat 4 Jun from 3-5pm  
Curated by artsworkeer Christina Hayes  
Steven Perrette's art frequently depicts the frenetic workings of the western retail world. This was Steven Perrette's first solo exhibition.



Cameron Noble Not titled 2008  
pastel on paper 38 x 56cm

### Melbourne Art Fair

Royal Exhibition Building, Melbourne, VIC  
Event 4-8 August 2010  
Curated by Cheryl Daye  
Artists 39 Arts Project Australia artists were featured in this exhibition

### Birds of a feather twitter together

Royal Exhibition Building, Melbourne, VIC  
Event 4-8 August 2010  
Curated by Peter Fay and Wendy Foard  
Artists Dorothy Berry, Alan Constable, Ruth Howard and Cam Noble

### TCB Art Inc Project Space

Royal Exhibition Building, Melbourne, VIC  
Event 4-8 August 2010  
Curated by Rob McHaffie and Lisa Radford  
Artists Boris Cipusev and Terry Williams

### Harrell Fletcher: The Sound We Make Together (Melbourne)

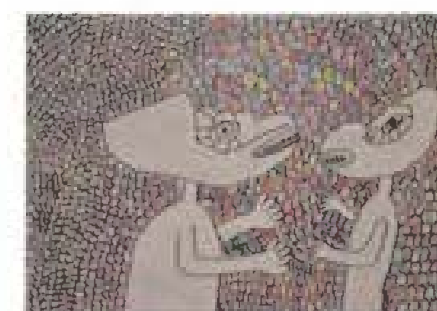
National Gallery of Victoria, Federation Square, VIC  
Exhibition 11 Sep 2010-30 Jan 2011  
Curated by Harrell Fletcher

### The Hobart Art Prize

Tasmania Museum and Art Gallery, Hobart, TAS  
Exhibition 24 Jul-29 Aug 2011  
Artist Alan Constable



Alan Constable Not titled (AK SLR) 2008  
ceramic 20 x 28 x 17.5cm



Terry Williams Not titled 2008 colour  
pencil on paper 25 x 35cm

### 27th Gold Coast International Ceramic Award

Gold Coast City Art Gallery, Surfers Paradise, QLD  
Exhibition 21 Aug-17 Oct 2010  
Artist Alan Constable

### Alan Constable Cameras

Leonard Joel - Specialist Auctioneers and Valuers, South Yarra, VIC  
(Exhibited during The Dr Dinesh Parekh Camera Collection camera auction)  
Event July 2010  
Artist Alan Constable

### Connected10

Melbourne Central, Melbourne, VIC  
Exhibition 13-26 Aug 2010  
Artists 14 Arts Project Australia artists were featured in this exhibition

### Exquisite Palette

St Luke Artist Colourmen Shop, Collingwood, VIC  
Exhibition 30 Jul-1 Sep 2011  
Artists Peter Cave, Karen McCullough and Fiona Taylor

### 48th Fishers Ghost Award

Campbelltown Arts Centre, Campbelltown, NSW  
Exhibition 6-21 Nov 2010  
Artist Lisa Reid



Paul Hodges Not titled 2010  
ink on paper 35 x 50cm



Fulli Andrinopoulos Not titled 2006  
pastel on paper 17.5 x 25cm

### Urban Smart Projects - Traffic Signal Boxes

Blackburn Rd and George Rd, Doncaster East, VIC  
From November 2010-ongoing  
Artist Warren O'Brien

### BSG Small Works on Paper

Brunswick Street Gallery, Nth Fitzroy, VIC  
Exhibition 10 Dec 2010-16 Jan 2011  
Artist Karen McCullough

### Plus One

The Library Artspace, J-Studios, North Fitzroy, VIC  
Exhibition 4-18 Dec 2010  
Curated by Viona Fung and Zoe Evershed  
Artists Paul Hodges and Lisa Reid (and artsworkeers Jakob Schmitt and Elyss McCleary)

### Shelf Life

Delmar Gallery, Trinity Grammar, Ashfield, NSW  
Exhibition 14 Nov-5 Dec 2010  
Artists Fulli Andrinopoulos, Paul Hodges and Julian Martin



Lisa Reid *A girl is swimming* 2009  
neo colour pencil on paper 38 x 57cm





Fiona Taylor *The not quite Twelve Apostles* 2010  
acrylic on canvas 20.5 x 25.5cm



Alan Constable *Not titled* 2009 gouache  
and dry pastel on paper 28 x 38.5cm



Julian Martin *Not titled* 2010  
pastel on paper 38 x 26cm

### Human Nature

As part of the One and All Festival,  
Warrnambool Art Gallery, VIC  
Exhibition 5–25 Nov 2010  
Curated by Sim Luttin and Penny Hunt  
Artists Alan Constable, Leo Cussen,  
Paul Hodges, Adrian Lazzaro,  
Julian Martin, Jodie Noble, Warren O'Brien,  
Anthony Romagnano, Rebecca Scibilia  
and Steven Worrell

### Alloys in Wonderland

Alphington, VIC  
Event 23 Mar 2011  
Artists Maryanne Agius, Jodie Noble,  
Lisa Reid and Steven Worrell

### City of Melbourne Commission

City of Melbourne Collection, VIC  
Artist Alan Constable

### Carnival of Mysteries (Finucane and Smith)

fortyfivedownstairs,  
Melbourne, VIC  
Event Fri 8–30 Oct 2010  
Artist Cathy Staughton

### Julian Martin New Work

Kitty Somerset, Northcote, VIC  
Exhibition 30 Jun–7 Sep 2011  
Artist Julian Martin

### Belle Arti Chapman and Bailey Acquisitive Award

Metro Arts, Brisbane, QLD  
Exhibition 22 Nov–3 Dec 2011  
Artists Peter Cave, Ian Gold,  
Adrian Lazzaro, Lisa Reid and  
Steven Worrell

### Linden Postcard Show

Linden Centre for Contemporary Arts,  
St Kilda, VIC  
Exhibition 5 Feb–26 Mar 2011  
Artists Peter Ben, Venuzza Iaconis,  
Malcolm Sturrock and Fiona Taylor

### Open Windows Art Prize

Box Hill Town Hall, VIC  
Exhibition 11–28 October 2010  
Artists Tim Noble, Warren O'Brien,  
Steven Perrette and Laura Sheehan

### Fred, Ginger and Other Stories

Delmar Gallery, Trinity Grammar,  
Ashfield, NSW  
Exhibition 13 Mar–17 Apr 2011  
Curated by Catherine Benz

### Constable

Stills Gallery, The Level, Paddington, NSW  
Exhibition 2 Mar–9 April 2011  
Artist Alan Constable

### Erotica

James Makin Gallery, Collingwood, VIC  
Exhibition 4–26 Feb 2011  
Curated by Jessica Williams  
Artist Chris Mason

### Rick Amor Print Prize

Montsalvat, Eltham, VIC  
Exhibition 8 Apr–22 May 2011  
Artist Lisa Reid

### Toyota Community Spirit Emerging Artist Exhibition

Toyota Community Spirit Gallery,  
Port Melbourne, VIC  
Exhibition 30 Mar–24 Jun 2011  
Artist Toby Matheson

### Penola Coonawarra Arts Festival– Unfiltered and Art Through Other's Eyes

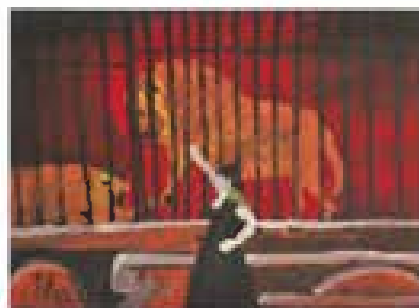
Penola Visitor Information Centre  
and Rymill Winery, Penola, SA  
Exhibition 12 May–26 June 2011  
Curated by Bryan Dawe and  
Krista McClelland  
Artists 24 Arts Project Australia artists  
were featured in these two exhibitions

### NGV 150th party

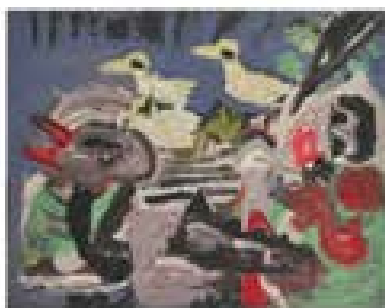
Installation and art walk between NGV  
International and NGV Australia, VIC  
Event 28–29 May 2011  
Artists 15 Arts Project Australia artists  
were featured in this event



Christopher Mason *Not titled* 2009  
ceramic 29 x 27.5 x 21cm



Steven Worrell *Not titled* 2010  
gouache on paper 38 x 38cm



Kelvin Heffernan *After Endormies by Rupert  
Bunny* 2011 acrylic on canvas 40 x 50cm

Photography by Penelope Hunt  
Registrations Coordinator, Arts Project Australia

# Financial Statements

for the year ended 30 June 2011



Toby Matheson *The Espy* 2007 acrylic on canvas 30 x 40cm

Profit and Loss Statement	16
Balance Sheet	17
Cash Flow Statement	18
Notes to the Financial Statements	19
Board of Management Statement	23
Independent Audit Report	24



## Income and Expenditure Statement

for the year ended 30 June 2011

	2011 \$	2010 \$
<b>Income</b>		
<b>Government grants received</b>		
Commonwealth grants	214,894.30	231,871.00
State grants	500,178.32	471,873.53
Capital grants	6,572.31	50,000.00
Other grants	14,050.00	22,524.00
<b>Sub total grants</b>	<b>735,694.93</b>	<b>776,268.53</b>
Exhibition/artwork sales	177,880.08	125,778.80
Leasing/hire of artwork	2,542.80	0.00
Studio fees	57,164.55	53,615.59
Membership fees	2,763.76	2,906.15
Sponsorships	89,545.45	19,590.90
Donations	116,152.50	145,790.44
Interest received	15,793.11	10,652.37
Sale of fixed assets	0.00	4,000.00
Miscellaneous income	3,520.83	5,658.17
<b>Total income</b>	<b>1,201,058.01</b>	<b>1,144,260.95</b>
<b>Expenses</b>		
Administration expenses	75,021.04	101,492.25
Advertising/pr	41,793.81	0.00
Depreciation	34,882.00	33,665.04
Building and equipment	59,924.24	14,459.50
Gallery	52,529.76	78,368.29
Postage and telecommunications	10,401.80	15,103.50
Finance and interest	1,091.24	0.00
Commissions on sales	88,749.30	75,467.28
Programs	16,087.51	32,721.32
Employment expenses	738,015.18	727,071.72
Loss on sale of assets	0.00	6,002.00
<b>Total expenses</b>	<b>1,118,495.88</b>	<b>1,084,350.90</b>
<b>Operating result from ordinary activities Including capital grants</b>	<b>82,562.13</b>	<b>59,910.05</b>
<b>Operating result from ordinary activities Excluding capital grants</b>	<b>75,989.82</b>	<b>9,910.05</b>
Opening retained results from operations	1,819,561.03	1,759,650.98
Net results attributable to the association	82,562.13	59,910.05
<b>Closing retained results</b>	<b>1,902,123.16</b>	<b>1,819,561.03</b>

## Assets and Liabilities Statement

as at 30 June 2011

	Notes	2011 \$	2010 \$
<b>Current Assets</b>			
<b>Cash Assets</b>			
Cash Assets	5	389,494.92	374,763.71
Receivables	6	14,558.40	10,104.00
<b>Total Current Assets</b>		<b>404,053.32</b>	<b>384,867.71</b>
<b>Non-Current Assets</b>			
Property, Plant and Equipment	7	1,632,972.90	1,593,389.40
<b>Total Non-Current Assets</b>		<b>1,632,972.90</b>	<b>1,593,389.40</b>
<b>Total Assets</b>		<b>2,037,026.22</b>	<b>1,978,257.11</b>
<b>Current Liabilities</b>			
Payables	8	45,093.93	55,971.74
Current Tax Liabilities	9	17,380.69	17,803.43
Current Provisions	10	17,244.35	26,244.35
Other Current Liabilities	11	29,360.25	37,549.55
<b>Total Current Liabilities</b>		<b>109,079.22</b>	<b>137,569.07</b>
<b>Non-Current Liabilities</b>			
Provisions	10	25,823.84	21,127.01
<b>Total Non-Current Liabilities</b>		<b>25,823.84</b>	<b>21,127.01</b>
<b>Total Liabilities</b>		<b>134,903.06</b>	<b>158,696.08</b>
<b>Net Assets</b>		<b>1,902,123.16</b>	<b>1,819,561.03</b>
<b>Members' Funds</b>			
<b>Reserves</b>			
Accumulated surplus (deficit)	12	1,902,123.16	1,819,561.03
<b>Total Members' Funds</b>		<b>1,902,123.16</b>	<b>1,819,561.03</b>



## Cash Flow Statement

for the year ended 30 June 2011

	Notes	2011 \$	2010 \$
<b>CASH FLOW FROM OPERATING ACTIVITIES</b>			
Cash Receipts from Operations		1,178,046.74	1,126,702.43
Interest Received		15,793.11	10,652.37
Memberships		2,763.76	2,906.15
Cash Payments to suppliers and employees		(1,107,406.90)	(1,138,559.12)
<b>Net Cash provided by (used in) operating activities</b>	<b>4</b>	<b>89,196.71</b>	<b>1,701.83</b>
<b>CASH FLOW FROM INVESTING ACTIVITIES</b>			
Proceeds from sale of property, plant and equipment		0.00	4,000.00
Purchase of property, plant and equipment		(74,465.50)	(83,261.33)
<b>Net Cash provided by (used in) Investing Activities</b>		<b>(74,465.50)</b>	<b>(79,261.33)</b>
<b>CASH FLOW FROM FINANCING ACTIVITIES</b>			
Repayments of borrowing		0.00	0.00
<b>Net Cash provided by (used in) Financing Activities</b>		<b>0.00</b>	<b>0.00</b>
Net Increase (decrease) in cash held		14,731.21	(77,559.50)
Cash at beginning of the financial year		374,763.71	452,323.21
<b>Cash at the end of the financial year</b>	<b>5</b>	<b>389,494.92</b>	<b>374,763.71</b>

## Notes to the Financial Statements

for the year ended 30 June 2011

### Note 1: Statement of Significant Accounting Policies

This financial report is a special purpose financial report prepared in order to satisfy the financial reporting requirements of the Associations Incorporations Act (Vic). The committee has determined that the association is not a reporting entity.

The financial report has been prepared in accordance with the requirements of the Associations Incorporation Act (Vic) and the following Australian Accounting Standards:

AASB 112:	Income Taxes
AASB 1031:	Materiality
AASB 110:	Events Occurring After Reporting Date
AASB 117:	Leases

No other applicable Australian Accounting Standards, Urgent Issues Group Consensus Views or other authoritative pronouncements of the Australian Accounting Standards Board have been applied.

The financial report has been prepared on an accruals basis and is based on historic costs and does not take into account changing money values, or except where specifically stated, current valuations of non-current assets.

The following material accounting policies, which are consistent with the previous period unless otherwise stated, have been adopted in the preparation of this financial report:

#### (a) Income tax

The association is exempt from income tax.

#### (b) Fixed Assets

Plant and equipment and motor vehicles are carried at cost less, where applicable, any accumulated depreciation.

The depreciable amount of all fixed assets are depreciated over the useful lives of the assets to the association commencing from the time the asset is held ready for use.

Land and building are to be independently revalued every 3 years. A commercial valuation was received during the 2008/09 financial year. The valuation amount has not been included in the financial statements as at 30 June 2011.

#### (c) Government Grants

Government grants are recognised in the operating statement on a systematic basis over the periods in which APA recognises as expenses the related costs for which the grants are intended to compensate.

#### (d) Sale of Artworks

Revenue from sales of artworks are recognised at point of sale.

#### (e) Interest Income

Interest income is recognised when it is probable that the economic benefits will flow to APA and the amount of revenue can be measured reliably.

#### (f) Donations

Donations are recognised when received.

#### (g) Employee Benefits

A liability is recognised for benefits accruing to employees in respect of annual leave and long service leave when it is probable that settlement will be required and they are capable of being measured reliably.

#### (h) Comparative Figures

APA have changed the classification of items in its financial statements. Comparative amounts have not been re-classified where it has been impracticable.



## Notes to the Financial Statements continued

for the year ended 30 June 2011

	Notes	2011 \$	2010 \$
<b>Note 2: Revenue</b>			
<b>Operating Activities:</b>			
Grants/Memberships		738,458.69	776,268.53
Interest revenue		15,793.11	10,652.37
Other Income		446,806.21	357,340.05
		<b>1,201,058.01</b>	<b>1,144,260.95</b>
<b>Note 3: Profit from Ordinary Activities</b>			
Profit (loss) from ordinary activities before income tax has been determined after:			
<b>Charging as Expense:</b>			
Non-cash items:			
- Depreciation		34,882.00	33,665.04
- Provisions		(4,303.17)	14,458.00
- Profit/Loss on sale of property, plant and equipment		0.00	6,002.00
<b>Total non-cash expenses</b>		<b>30,578.83</b>	<b>54,125.04</b>
<b>Note 4: Cash Flow Information</b>			
Operating Profit after Tax		82,562.13	59,910.05
<b>Cash Flows excluded from profit attributable to operating activities</b>			
Non-cash flows in profit			
Depreciation		34,882.00	33,665.04
Loss on sale of property, plant and equipment		0.00	6,002.00
Changes in assets and liabilities:			
(Increase)/Decrease in trade debtors/other assets		(4,454.40)	(4,278.00)
Increase/(Decrease) in trade creditors and other payables		(11,300.55)	(27,793.71)
Increase/(Decrease) in provisions		(4,303.17)	14,458.00
Increase/(Decrease) in grants		(8,189.30)	80,261.55
<b>Net Cash provided by (used in) operating activities</b>		<b>89,196.71</b>	<b>1,701.83</b>
<b>Note 5: Cash Assets</b>			
Bank accounts:			
- Operating Account		26,774.90	5,585.81
- Short Term Deposit		363,897.03	350,739.01
- Gifts A/C		3,255.97	17,988.89
Other cash items:			
- Petty Cash		142.00	330.00
- Clearing Account		(4,574.98)	120.00
		<b>389,494.92</b>	<b>374,763.71</b>

## Notes to the Financial Statements continued

for the year ended 30 June 2011

	Notes	2011 \$	2010 \$
<b>Note 6: Receivables</b>			
Trade Debtors		14,558.40	10,104.00
		<b>14,558.40</b>	<b>10,104.00</b>
<b>Note 7: Property, Plant and Equipment</b>			
Land - at cost		264,000.00	264,000.00
Building - at cost		1,247,083.80	1,181,208.80
Plant and Equipment - at cost		293,272.28	284,681.78
Accumulated Depreciation P&E		(184,832.82)	(152,448.82)
Motor Vehicles - at cost		21,430.64	21,430.64
Accumulated Depreciation		(9,606.00)	(7,108.00)
Permanent Art Work		1,625.00	1,625.00
<b>Total Non-current Assets</b>		<b>1,632,972.90</b>	<b>1,593,389.40</b>
During the 2008/09 year, the Committee commissioned Independent Valuers report on the valuation of the freehold land and buildings held by the Association.			
The valuation received, on a commercial operation basis was \$2,050,000.00, compared to the current carrying value of \$1511,083.80.			
The Committee have resolved to note the valuation, but not to adopt or incorporate the commercial valuation figure into the financial statements.			
<b>Note 8: Payables</b>			
Unsecured:			
Trade Creditors		3,014.17	50,882.01
PAYG Payable		5,242.34	5,089.73
Other Creditors		36,834.42	0.00
		<b>45,090.93</b>	<b>55,971.74</b>
<b>Note 9: Current Tax Liabilities</b>			
<b>GST Clearing</b>		<b>17,380.69</b>	<b>17,803.43</b>
<b>Note 10: Provisions</b>			
Provision for Annual Leave		17,244.35	17,244.35
Provision for Long Service Leave		25,823.84	21,127.01
Provision for Fellowship		0.00	9,000.00
		<b>43,068.19</b>	<b>47,371.36</b>



	Notes	2011 \$	2010 \$
<b>Note 11: Other Current Liabilities</b>			
Unexpended Grants		<b>29,360.25</b>	<b>37,549.55</b>
<b>Note 12: Member's Funds</b>			
Opening Balance		1,819,561.03	1,759,650.98
Surplus (Deficit) for the year		82,562.13	59,910.05
<b>Closing Balance</b>		<b>1,902,123.16</b>	<b>1,819,561.03</b>

**Note 13: Contingent Liabilities**

The Department of Human Services has a caveat over the Association land and buildings. The caveat entitles DHS to receive 18.4% of the value of the land and buildings if the Association were to wind up, become insolvent, sell the land and buildings, breach the deed with DHS, breach applicable legislation or use the property for a non-approved purpose.

**Note 14: Retrospective Adjustment**

In the prior year the Association recognised \$169,000 as a non-current interest bearing liability. This liability has been retrospectively corrected to a contingent liability disclosed in Note 13. Comparative numbers have been retrospectively adjusted.

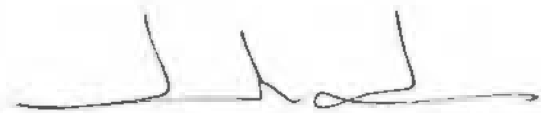
## Statement by Members of Board of Management


The Board of Management has determined that the association is not a reporting entity and that this special purpose financial report should be prepared in accordance with the accounting policies outlined in Note 1 to the financial statements.

In the opinion of the Board of Management, the financial report as set out on pages 16-24,

1. Presents a true and fair view of the financial position of Arts Project Australia Inc as at 30 June 2011 and its performance for the year ended on that date.
2. At the date of this statement, there are reasonable grounds to believe that Arts Project Australia Inc will be able to pay its debts as and when they fall due.

This statement is made in accordance with a resolution of the Board of Management and is signed on behalf of the Committee by:

President:  Jonah Jones

Treasurer:  Mashelle Parrett

Dated this 29th day of September 2011



## Independent Audit Report

to the members of Arts Project Australia

ARTS PROJECT AUSTRALIA INC  
ABN: 99 804 795 393  
INDEPENDENT AUDITOR'S REPORT TO THE MEMBERS OF  
ARTS PROJECT AUSTRALIA INC

## Report on the Financial Report

We have audited the accompanying financial report, being a special purpose financial report, of Arts Project Australia Inc (the association), which comprises the Board's report, the assets and liabilities statement as at 30 June 2011, the income and expenditure statement for the year then ended, notes comprising a summary of significant accounting policies, other explanatory notes and the statement by members of the committee.

## Board's Responsibility for the Financial Report

The Board of Management of Arts Project Australia Inc is responsible for the preparation of the financial report, and has determined that the basis of preparation described in Note 1 is appropriate to meet the requirements of the Associations Incorporation Act (Vic) 1981 and is appropriate to meet the needs of the members. The Board's responsibility also includes such internal control as the Board determines is necessary to enable the preparation of a financial report that is free from material misstatement, whether due to fraud or error.

## Auditor's Responsibility

Our responsibility is to express an opinion on the financial report based on our audit. We have conducted our audit in accordance with Australian Auditing Standards. Those standards require that we comply with relevant ethical requirements relating to audit engagements and plan and perform the audit to obtain reasonable assurance whether the financial report is free from material misstatement.

An audit involves performing procedures to obtain audit evidence about the amounts and disclosures in the financial report. The procedures selected depend on the auditor's judgment, including the assessment of the risks of material misstatement of the financial report, whether due to fraud or error. In making those risk assessments, the auditor considers internal control relevant to the association's preparation of the financial report that gives a true and fair view, in order to design audit procedures that are appropriate in the circumstances, but not for the purpose of expressing an opinion on the effectiveness of the association's internal control. An audit also includes evaluating the appropriateness of accounting policies used and the reasonableness of accounting estimates made by the committee, as well as evaluating the overall presentation of the financial report.

We believe that the audit evidence we have obtained is sufficient and appropriate to provide a basis for our audit opinion.

## Opinion

In our opinion, the financial report presents fairly, in all material respects the financial position of Arts Project Australia Inc as at 30 June 2011 and of its financial performance for the year then ended in accordance with the accounting policies described in Note 1 to the financial statements, and the Associations Incorporation Act (Vic) 1981.

## Basis of Accounting and Restriction on Distribution

Without modifying our opinion, we draw attention to Note 1 to the financial report, which describes the basis of accounting. The financial report has been prepared to assist Arts Project Australia Inc to meet the requirements of the Associations Incorporation Act (Vic) 1981. As a result, the financial report may not be suitable for another purpose.

Auditor's signature:



Auditor's address: Suite 5, 191 Riversdale Rd, Hawthorn VIC 3122

Dated this 29th day of September 2011

ARTS45305

## Vale

## Wilfred Clarke

26 December 1954 – 28 August 2010

Wilfred Clarke first joined the Saturday studio program in 2009. With an eclectic collection of colourful knitwear lovingly crafted by his mother and often topped with a dapper hat, Wilfred's warm and considered demeanor brought a unique sense of presence to the studio. His quiet observant nature was punctuated by a dry laconic sense of humor. Wilfred was a cat man. Once he was featured in a local paper whilst taking his cat 'Doodles' for his daily walk.

In the studio Wilfred worked like a medieval illuminated manuscript painter. With many small brushes, dipped in gouache, he layered rich detail into his paintings. His contemplative practice brought many imaginary worlds to light. Transparent glazes, glints of gold and copper, fiery red and a vast array of greens and blues were used with the light flick of the wrist. It was not long before his half day with Arts Project turned into three full days.

In the winter of 2010 Wilfred passed away at St Vincent's Hospital, in a room his brother Tom described as fitting. For within it Wilfred lay in majestic view of a twilight vista. From that top floor large windows displayed a richly detailed expanse of city as it rolled out and dissipated into evening clouds. The scene held Wilfred's gaze - just as the view from the large windows in our High Street studio often did. For those of us privileged to have known Wilfred and his many otherworldly paintings, this image is evocative. It is one of the artist looking, ever alert, to the beauty and wonder of our world. We continue to miss Wilfred's clarity of vision and quiet charm in the studio at Arts Project Australia. He was a bright and thoughtful gentleman.

## Camille Hannah and Christina Hayes

We gratefully acknowledge the Clarke Family for their generous contributions to the studio in Wilfred's memory.



Christina Hayes Moonlit Clarke 2011  
oil on linen 82 x 56cm

## Toni Hanger

5 January 1957 – 19th June 2011

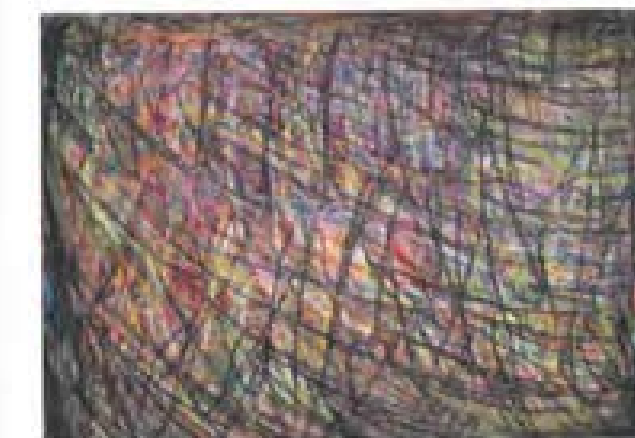
It is with great sadness that we report the death of long time Arts Project artist Toni Hanger in June of this year.

Toni attended the studio as part of the Oakleigh Centre contingent, ably assisted by the wonderful Valerie. From the very beginning, Toni's beautifully dense abstracts revealed depth and atmosphere through an intuitive use of colour and a unique process and style. Over the twenty-plus years in which Toni was a studio artist, these qualities became all the more apparent, with her work exhibited in group shows such as: *Colour My World*, 2011; *Surface*, 2010; *Bright Reactions*, 2000 and a solo show in 1999. Toni's energetic and intensely worked pictures have become proudly featured addition to many collections.

More importantly perhaps, Toni's presence will be sorely missed in the studio. Her quiet manner and methodical work habits belied her cheeky nature and ready sense of humour. During the years that Toni attended, her sister, Bernice became a familiar face in the studio at Arts Project, occasionally calling in to spend time with Toni as she worked, so that she might share Toni's clear pleasure and passion in her practice.

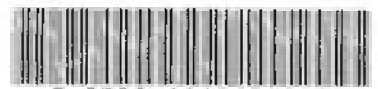
Our condolences go to Bernice, the Hanger family, Valerie and all from the Oakleigh Centre.

James McDonald



Toni Hanger Not titled (Multicoloured lines) 2010  
pencil on paper 25 x 35cm





3 0328 11156848 0



ARTS PROJECT AUSTRALIA



**Arts Project Australia**

ABN: 99 804 795 393

24 High Street  
Northcote VIC 3070

**T** 03 9482 4484

**F** 03 9482 1852

**E** [info@artsproject.org.au](mailto:info@artsproject.org.au)

**www.artsproject.org.au**

This Annual Report is printed on  
100% post consumer waste stock  
by Arena Printing and Publishing  
who use 100% green energy