



indelabilityarts
ANNUAL REPORT
2021

OUR POINT OF DIFFERENCE

indelabilityarts pushes boundaries and expectations with its artists and audiences to think outside the box of what is attainable. In delivering on its mission statement, indelabilityarts services are conveniently categorised into two streams – performances and workshops.

Since its inception in 2015, indelabilityarts has created three original and distinctly diverse shows: Look Mom...No Hands!! A cabaret style comedy show for adults, Love me, which focuses on mental health and well-being in young people, and Wilbur the Optical Whale, a show created for children that explores accepting others and celebrating difference.

We are creating inclusive pathways and employment for people with disabilities, indelabilityarts is artist led and our artists are at the forefront of creating the work. It is essential that the ideas, goals and future leading of this company is guided by people with disability.

Photo by Nick Morrissey

National Awards

**Weekly Innovation Award
Adelaide Fringe 2020
Wilbur the Optical Whale**

**Overall Access Award
Adelaide Fringe 2020
Wilbur the Optical Whale**

**'Best independent
production' at the Matilda
awards 2022**

ARTISTIC DIRECTOR'S REPORT:

During 2021 when most arts organisations were struggling, we survived with a minimal loss and without any government support. Following on from a very difficult 2020, the new year started on a seemingly brighter note, however with an air of caution. Many venues and communities were struggling with COVID restrictions and the flow on effect of closures in 2020. Following on from our great success in 2020 at the Adelaide Fringe Festival where we took out 2 awards – the John Chattaway Weekly innovation award and the Deaf Can Do overall access award we came back to Queensland ready to take on the world – unfortunately the pandemic put the brakes on that for a while. After presenting at Artour showcase in 2020, we had extensive interest from 16 venues for a strong Queensland tour of Wilbur the Optical Whale. Unfortunately due to the pandemic much of this work was unable to go ahead in 2021.



Photo by Nick Morrissey



Photo by Nick Morrissey

Despite this we still presented Wilbur and our community engagement activities at 6 venues throughout the year. We challenged ourselves with a remote North West Queensland tour, travelled to the Gold Coast and Redlands and presented our work as part of the Brisbane Festival. All in all, it was a relatively good year. During 2021 we also continued to develop Betsy and I; Conversations with My Walker – our latest work with a strong disability led focus. We had great plans to extend our workshop series as well, however due to the impact of COVID19 we were cautious about how many new workshops we could offer. We launched our dance workshops at Redland Performing Arts Centre (RPAC) and are hoping to build on this over the next 12 months. Outside of our touring and workshop series we started to develop our producing arm of the company. We identified a gap in the industry for independent artists with disability who are developing their own work. During 2021 we supported 2 independent artists creating new works and we are hoping to continue these relationships and extend this service to more artists in our community over the next few years.

Our highlights for 2021 were the wonderful feeling of being in front of an audience again at the Gold Coast at HOTA during their Kids Take Over week – we had adapted our interactive elements of the show so they were 'covid safe' and our audiences loved it! Another highlight was our remote Queensland tour, it was such a joy to spend time in those communities engaging with the schools and members of the community both at the show and outside of our performance schedules. Being part of Brisbane Festival in 2021 was a dream come true for the company. We were thrilled to present a completely sold out season at Metro Arts as part of their Brisbane Festival line up. We were also one of 14 new organisations to receive 4 year funding through Arts Queensland, giving us a renewed sense of energy for the future growth of the company. We received funding through the community development grant to extend our headquarters to include an official 'office' area separate from our meeting room.

We have more lined up for 2022 so we can't wait to see what the future holds for our little company

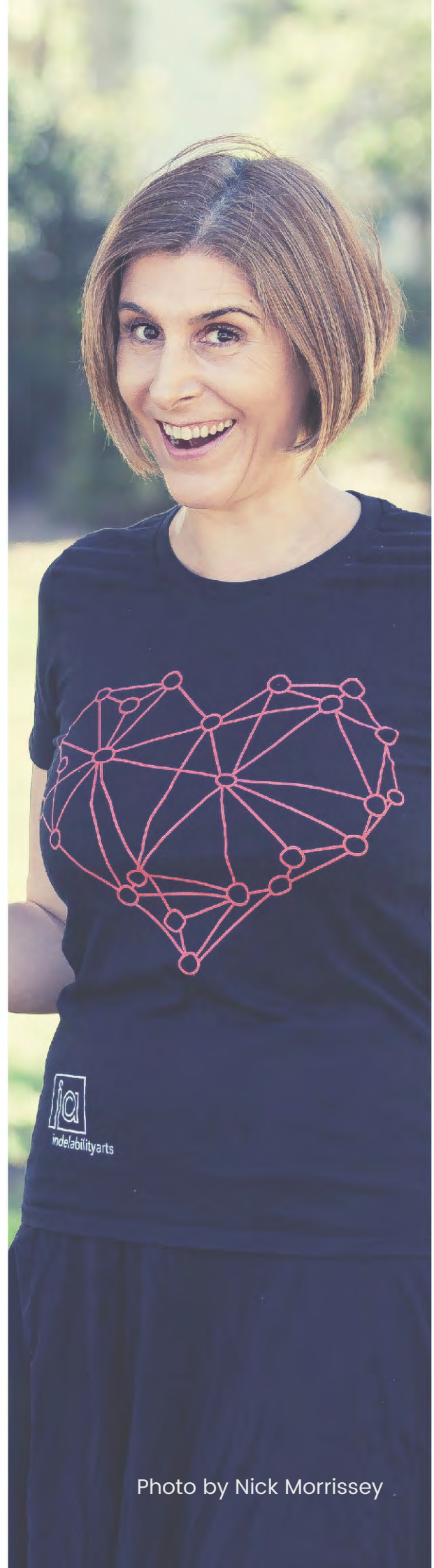


Photo by Nick Morrissey



Love Me;

Photo by Nick Morrissey

GOALS

1

Explore, develop and present innovative inclusive performance works with d/Deaf disabled artists.

2

Breaking down barriers for d/Deaf disabled artists in our community to access and create work.

3

To be leaders in the field of accessible and inclusive arts practice.

4

Secure enduring relationships with partners who share our core values.

5

Future proofing - maintaining and growing a financially sustainable Company

Explore, develop
and present
innovative
inclusive
performance
works with
d/Deaf disabled
artists.

1



Photo by Nick Morrissey

2021 saw us present our Children's show Wilbur the Optical Whale at 6 venues across the state. This was made possible through funding from Arts Queensland QASP Advantage and NDIS through their ILC Community Development and Capacity Building grant.

- HOTA Gold Coast - 150
- Hughenden, Mt Surprise and Georgetown - 175
- RPAC - 425
- Brisbane Festival - 300

We continued to develop Betsy and I; Conversations with my Walker in partnership with RPAC, Brisbane Powerhouse and with funding support through the Access Arts Achievement award. This work will continue to be developed over the next 12 months.

Through our performances, community engagement and workshop series' we are creating opportunities for people with disabilities to engage in the arts on their own terms. Alongside our touring performances we present pre-show community engagement activities including circus and arts workshops and tactile tours. During 2021 we presented these pre-show workshops to approximately 120 participants. Aside from the pre-show community workshops we also deliver a year long program that offers skills and performance training for approximately 30 participants over 2021. Our 3 ongoing workshop series for 2021 were presented across 2 venues; RPAC (Tuesdays and Thursdays) and Sandgate (Wednesdays). Alongside our group workshop/training programs we also offer individual bespoke workshops and currently have 6 individuals training with us each week.

2

Breaking
down
barriers for
d/Deaf
disabled
artists in
our
community
to access
and create
work.

To be
leaders in
the field of
accessible
and
inclusive
arts
practice.

3

We are continuing to develop works that have access embedded in the process. Betsy and I is our current work in development and is our first fully Disability led project with Auslan interpreting and Audio description embedded in the development of the work. Alexandra Ellen, our artistic associate, is lead creative, writer and performer. This work had its first development showing in October 2021.

We held our annual disability awareness training session as a zoom session due to COVID restrictions early in 2021. This will be a yearly training session that we will provide for our staff, ensemble and board members.

During 2021 we continued our partnership with Redland Performing Arts Centre (RPAC) as Company in Residence, this included presenting Wilbur the Optical whale (4 sold out shows over 2 days) as well as our year long drama and dance workshop programs which run weekly throughout the year. We strengthened our relationship with Flipside circus and continued to work with them to present Wilbur the Optical Whale in our Queensland tour. We had a strong relationship with Artour who co-produced our Queensland tour. Brisbane Powerhouse and RPAC also supported the development of Betsy and I with in-kind venue support.

Secure
enduring
relationships
with partners
who share
our core
values.

Future
proofing –
maintaining
and
growing a
financially
sustainable
Company

5

We continued to apply for a variety of grants including Arts Queensland Organisational funding, which we were successful in receiving for the next 4 years. This funding will go a long way to supporting our company's goals and future growth. We were also successful in receiving NDIS funding to support our Wilbur regional tour for 2021/22 and this was further supported by Arts Queensland QASP funding to support community engagement in the regions. We meet with our current donors on a regular basis and they are invited to all performances and company activities. As part of our company development we hold a yearly fundraiser - 2021 saw us host Drag Queen Bingo, an event that sold out within 2 weeks.

SUMMARY OF OUR STATS

WORKSHOPS

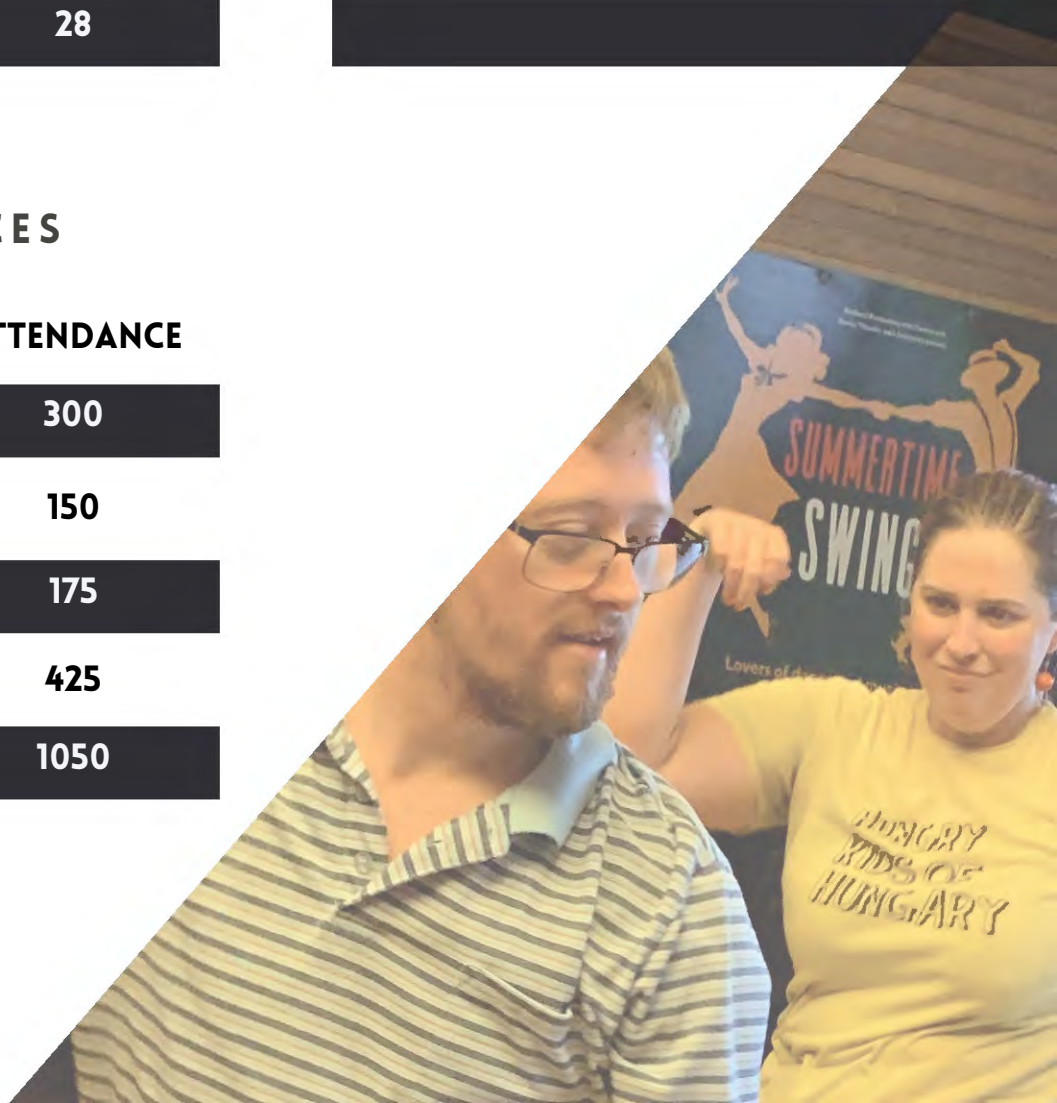
VENUE	ATTENDANCE
RPAC	12
RPAC DANCE CLASS	4
SANDGATE	6
PRIVATE LESSONS	6
TOTAL	28

WILBUR THE OPTICAL WHALE WORKSHOPS

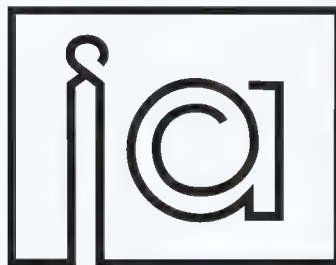
VENUE	ATTENDANCE
BRIS FEST	30
HOTA	20
NORTH QLD	70
TOTAL	120

PERFORMANCES

VENUE	ATTENDANCE
BRIS FEST	300
HOTA	150
NORTH QLD	175
RPAC	425
TOTAL	1050



SPONSORS SUPPORTERS PARTNERS



indelabilityarts



Proudly supported by



Dedicated to a better Brisbane



artsQueensland

**BRISBANE
POWERHOUSE
ARTS**



**FLIPSIDE CIRCUS
BRISBANE CITY COUNCIL SPONSORSHIP
RPAC
ARTS QUEENSLAND
BRISBANE POWERHOUSE
QUEENSLAND GOVERNMENT COMMUNITY BENEFIT FUND**



photo by Nick Morrissey