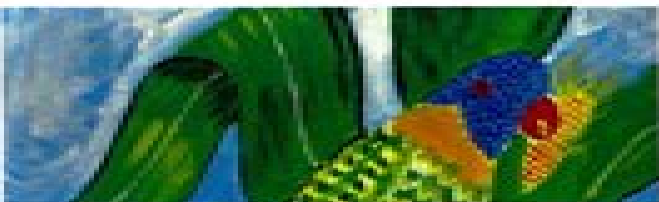




Image: W. Laurson, 'Lookalike'
Photograph: Fred Cummings
Copyright: Laurson

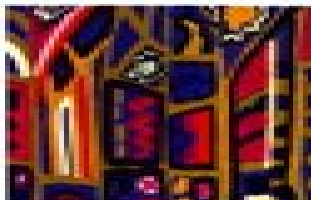
A-frame exhibition



1.



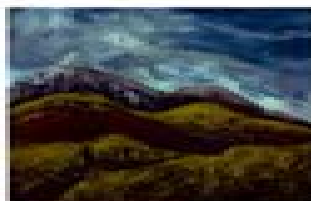
2.



5.



3.



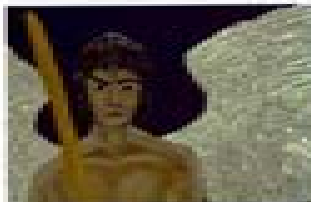
6.



7.



8.



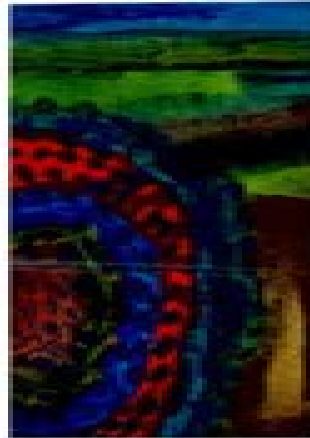
10.



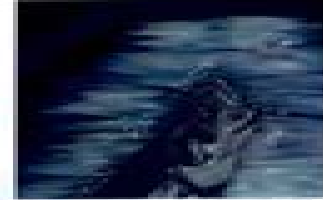
11.



13.



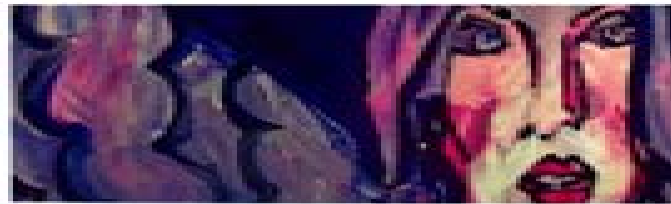
14.



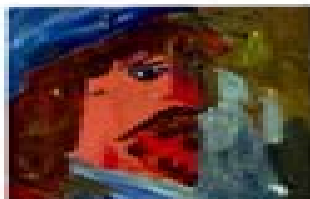
17.



18.



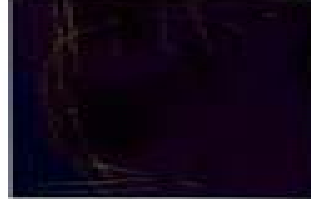
15.



4.



9.

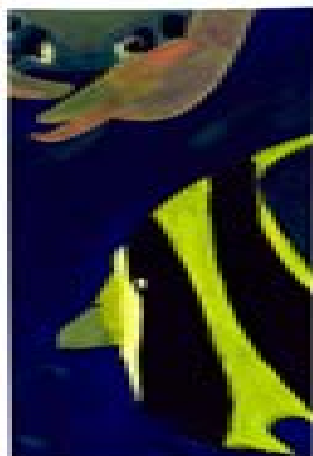


12.

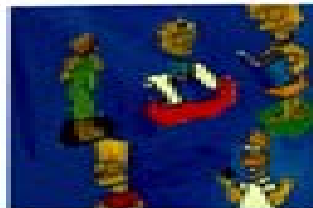


16.

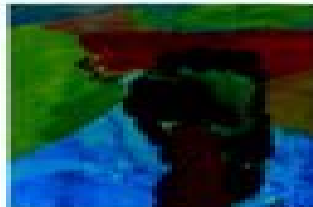
1. Joy Rao, Spring 2007
2. Ina Alander, Spangled Emperor 2007
3. Michelle Hosking, Virgin and Child 2007
4. June Schun, 17th-Century Gentleman 2007
5. Edwin Kluwe, Pink and Gold Alight 2007
6. Julie Lanning, Damavand 2007
7. Theo White, Self Portrait 2007
8. Vince Gilbert, Falcons Feeding Redgling 2007



19



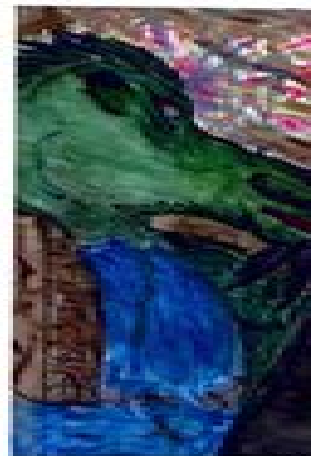
21



22



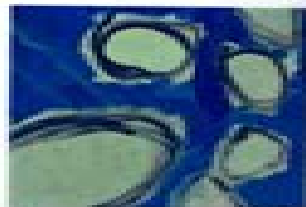
24



30



33



34

9. Solder, *Untitled* 2007

10. Sue Nash, *Guardian Angel* 2007

11. Alexandra Hill, *Flower and Nature by Sparkling Stream* 2007

12. Gail Haynes, *Hope* 2007

13. Gwynedd Fain, *Rise to be Me* 2007

14. Tim Connell, *Red Circle with Green and Blue* 2007

15. Hal Marshall, *Angel Face* 2007

16. Hanna Solomon, *Battle of Jericho* 2007

17. Jean Morrison, *Majestic Samamundi* 2007

18. Jean Murray, *Red Poppies* 2007

19. John Russ, *Underwater* 2007

20. Terry Griffin, *Green Man* 2007

21. Mick Skilbeck, *The Simpsons* 2007

22. Tracey Pagen, *Pine Tree* 2007

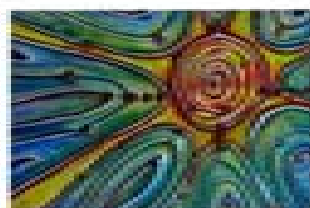
23. Val Tabin, *Agape Calm* 2007

24. Wendy Trow, *Albatross Over Antarctica* 2007

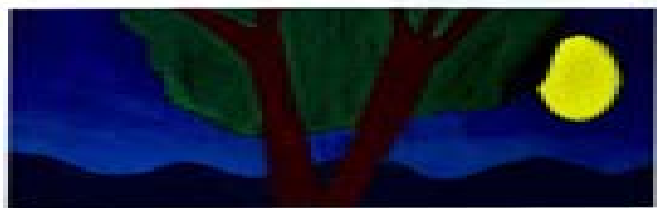
25. Charlie Tapin, *Yellow and Orange* 2007



25



27



31



26



28

26. Peter Scudde, *Showdown* 2007

27. Pam Thorley, *InterPLAY* 2007

28. Frances Mary Cowie, *Out of Chaos can come Hope* 2007

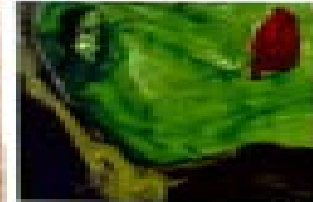
29. Nanook, *Fashion Nation* 2007

30. Stephanie Under, *Dreams from the Subconscious* 2007

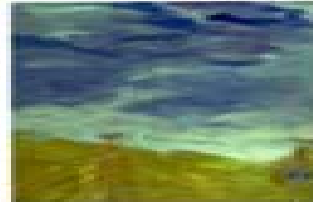
31. Tina Ferguson, *The Path to the Moonlight* 2007

32. Debbie Osborne, *Flower Sunset* 2007

33. Brian Miller, *Orange Interior* 2007



20



23



29



32



35

Arts Access SA
A-Frame Exhibition and Auction
Foyer, Adelaide Festival Centre
King William Road, Adelaide
Auction: Saturday 8 December 2007 1pm sharp

Artwork viewing: 5-16 December 2007 or at:
<http://www.artsaccess-sa.org.au/aframe/aframe07.php>

Arts Access SA Inc
ABN: 43 022 334 709
101 Halifax Street Adelaide
SA 5000 Australia
Telephone: (08) 8224 0709
Fax: (08) 8224 0709
Email: info@artsaccess-sa.org.au
Web: www.artsaccess-sa.org.au

Payment and Collection of artworks
Successful bidders are to pay for their all items in full
at the Arts Access SA registration table on the day.

Payment methods include Cash, Visa, MasterCard
or Cheque (with identification).

The A-Frame Exhibition will remain on display in the Adelaide
Festival Centre Foyer from 5-16 December 2007 inclusive
and no work may be removed until the exhibition close.

Items may be collected from the Arts Access SA Offices
from Monday 17th December between 9am-5pm (Note
Christmas closure Fri 21 Dec - Wed 2 Jan included).

Items will be packaged and transported within the Adelaide
Metro area by Arts Access SA for a fee of \$65 including GST.

Items for any other destination will incur an additional
fee for transport at cost.

Charity Status

Arts Access SA Incorporated is endorsed as a deductible
gift recipient under Subsection 50-8A of the Income Tax
Assessment Act 1997. Gifts of \$2 or more are tax deductible.

As a charity art auction some opportunities may be available
to buyers and we would encourage you to read the article
from Philanthropy Australia:
www.philanthropy.org.au/affinity/aag/buyersextract.htm

Copyright

Arts Access SA supports the work of artist and would
encourage any buyer to be familiar with issues relating to
Copyright and Visual Arts. The following info sheet is available:
www.copyright.org.au/pdf/aac/info sheets_pdf/G0033.pdf

General Terms and Conditions of Sale

Arts Access SA Incorporated advocates for access
and participation in South Australia's arts and cultural
life by all people with disabilities. This exhibition has been
developed by Arts Access SA in collaboration with the
artists whose works are presented. All the proceeds
from this auction will be shared equally (50:50) between
the individual artist and Arts Access SA for each piece
sold. All artworks included in the auction are for sale.
A reserve price of \$100 (one hundred dollars) has been
set as a value for each individual artwork.

Going, Going Gone

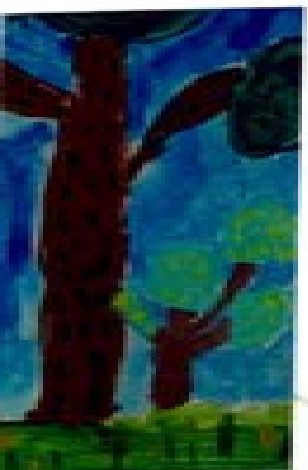
The auction will be conducted by Richard Thwaites of LJ
Hooker Kensington a Licensed Auctioneer. The auctioneer
will conduct the auction and following his final call the item
will be sold to the highest bidder.

Bidders are required to be registered prior to the
commencement of the Auction. Each bidder will receive
a numbered paddle which will need to be shown clearly
to the auctioneer.

Advance bids are to be made with Arts Access SA via its
website <http://www.artsaccess-sa.org.au/aframe/bid.php>,
email: info@artsaccess-sa.org.au or fax: (08) 8224 0709
Deadline: 5pm, Friday 7 December 2007.



36



37



39



38



40

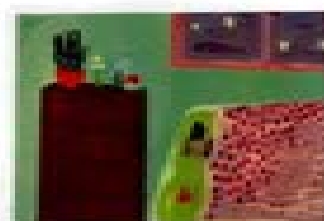


41



42

34. Jones Kurtze, *Super World* 2007
 35. Glen Blund, *Gerberda in the Sun* 2007
 36. Lucy McCorm, *Inside Our* 2007
 37. Lauren Thompson, *Pine Trees of Mind's Compur* 2007
 38. Dana Hooze, *Stunt Desert Pad* 2007
 39. Philip Peckover, *Lobethal No.58* 2007
 40. Wayne Hone, *Platon Pumping* 2007
 41. Kay Orbach, *Lily* 2007
 42. Marge Baker, supported by Malcolm Edwards, *Penguins* 2007
 43. Rose O'Malley, *Goodnight* 2007
 44. Trina Edwards, *Sun's Up* 2007
 45. Kay Pritchard, *Stay over the Rainbow* 2007
 46. Mei Kelly, *War in My Head* 2007
 47. R Lomas, *Lookalike* 2007
 48. Bryan Tingey, *Tongue and Lip Positions for Sounding Vowels* 2007
 49. Sophie Janson, *Going for a Walk* 2007
 50. Rebecca Wolf, *Some Favourites* 2007



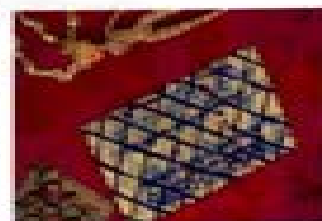
43



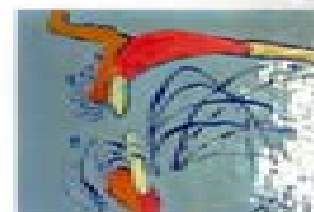
45



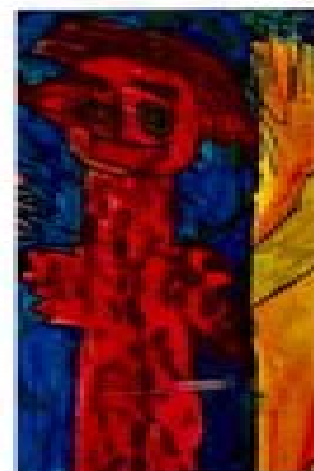
44



46



45



46



50

In 2006 Arts Access SA commenced a program of development and awareness for the visual arts. It started with A-Frame Exhibition and Auction, as part of International Day of People with a Disability and presented at the Adelaide Festival Centre with a detailed catalogue.

Following the sell-out success, Arts Access SA has decided to continue the event, as an important annual program, with 2008's date already confirmed. Without question visual arts is now on our agenda. We're keen to give artists with disabilities opportunities to gain career development through exhibition, market value sales and public profile.

A-Frame Art Exhibition & Auction has now exhibited over 100 works by South Australian artists with a disability. This demonstrates that the sector is alive and well. However, apart from an event such as this, professional opportunities for such artists are far and few between.

The work undertaken by the many organisations supporting these artists is much appreciated. However, without a greater coordinated approach, it's not going to result in sustainable long-term professional outcomes.

Arts Access SA is keen for South Australia to have a permanent gallery space and resources to make it possible for such artists to reach their full potential. We have seen projects interstate that offer individual respect, employment opportunities that are successful models.

This Exhibition has been made possible through collaboration and partnership with a range of organisations that like Arts Access SA are committed to the belief that artists with disabilities have the right of access to freely express themselves through the visual arts, and the right to an opportunity to have that work seen in a mainstream public venue. Therefore our first thank you is to the Adelaide Festival Centre. In addition to the provision of the high-profile Foyer of the Festival Theatre, we are indebted to the Adelaide Festival Centre's Visual Arts Program, Production Department and Restaurant Associates.

An exhibition of this kind is only possible with personal commitment. I would like to acknowledge a few of those people and their contribution.

Arts Access SA supplied artists with over 120 canvases (50 x 80cm), over 80 works were submitted, with to be 50 selected. In keeping with our desire to encourage professionalism, the artworks were selected by two of South Australia's leading artists and arts educators, Paul Hoban and Virginia Jay. Selection is an arduous task and I would like to thank the panel for their capacity to give a considered view of what South Australia's artists with disabilities create.

The importance of this resultant exhibition should not be overlooked for both the artists and Arts Access SA. One tool available for artist to recognise their work and proof of an exhibition within a mainstream context is the production of a quality catalogue. We thank the University of SA's School of Design and particularly, Fred Littlejohn and designer, Donna-Lee Stoic for their magnificent assistance with this Exhibition's promotion and documentation.

Arts Access SA's capacity to develop this exhibition has arisen from the support of: the SA Government through Arts SA and the Department for Families and Communities and the Australian Government through the Australia Council.

We also would like to thank our generous corporate partners: Auctioneer, Richard Thwaites of LJ Hooker Kensington, who joins us for the 2nd year to auction the works, with his characteristic energy. We welcome Guardian Insurance and thank the Australia-Israeli Chamber of Commerce for allowing us to present Arts Access SA at their recent function. We particularly appreciate Montega Wines contribution of fine wines for the Auction function.

An exhibition of this kind is more than calling up a few people and hanging their pictures on a wall. Jeanette Tierney, the Arts Access SA team and volunteers, including, Desirée Lutz have contributed magnificently to this project. They have demonstrated creativity and a continued enthusiasm for the development of visual arts for people with a disability.

The works presented in A-Frame demonstrate what a rich and compelling contribution to Australia's cultural life visual artists with disabilities can create.

Thank you for witnessing this exhibition and of course, your bid!

Peter Tragllogas
Executive Director
Arts Access SA