

**THEATRE OF THE DEAF IS THE ONLY PROFESSIONAL DEAF THEATRE COMPANY IN AUSTRALIA. USING A UNIQUE VISUAL STYLE OF PERFORMANCE THE COMPANY SPECIALISES IN THEATRE FOR YOUNG PEOPLE. OUR AIM IS TO PRODUCE QUALITY THEATRE PRODUCTIONS WHICH GIVE AUDIENCES AN ENTERTAINING INSIGHT INTO DEAF CREATIVE EXPRESSION AND UNIVERSAL ISSUES.**

## **AUSTRALIAN THEATRE OF THE DEAF IN SCHOOLS**

### **WHY NOT BRING A NEW EXPERIENCE TO YOUR SCHOOL?**

Theatre of the Deaf has performed more than 60 productions in schools throughout Australia over the last 17 years. The Company has an outstanding reputation for providing relevant and entertaining theatre which inspires and enthralls students of all ages.

Theatre of the Deaf's performances and workshops are excellent resources for students and teachers. The performances are designed to complement key learning areas and are useful companions to both primary and secondary curriculums. Teachers notes and follow-up activities are provided and the actors present a lively question and answer session with the students after each performance. Our productions are a positive and entertaining way to introduce discussion and appreciation of the following areas:

• **DRAMA** • **COMMUNICATION** • **GENERAL STUDIES** • **CULTURAL IDENTITY** • **MULTI-CULTURALISM** • **SOCIAL STUDIES** • **SELF ESTEEM** • **PERSONAL DEVELOPMENT** • **SOCIAL RESPONSIBILITY** • **POSITIVE ACCEPTANCE**

### **WHY NOT OFFER SOMETHING DIFFERENT TO YOUR STUDENTS?**

Theatre of the Deaf produces energetic and dynamic performances. The Company incorporates the following techniques to make unique and stimulating productions:

• **VISUAL THEATRE** • **COMEDY** • **MUSIC** • **NON-VERBAL COMMUNICATION** • **MASK** • **AUDIENCE INVOLVEMENT** • **DANCE/MOVEMENT** • **STORYTELLING** • **EXPRESSIVE ARTS** • **BODY LANGUAGE** • **SIGN SINGING**

A performance by Australian Theatre of the Deaf in your school will be a memorable and challenging experience for students and teachers alike.

## **WORKSHOPS**

### **WHY NOT COMBINE A PERFORMANCE WITH A WORKSHOP BY THEATRE OF THE DEAF?**

We have a variety of workshops which are readily adaptable for a wide range of ages and experience. We can also design a workshop to suit your students' specific needs. Please contact us for further information.

### **VISUAL COMMUNICATION**

**SUITABLE FOR ALL AGES.** This workshop teaches students to communicate visually rather than verbally. It concentrates on developing the use of facial expression, body language and gesture to communicate a message.

### **INTRO TO VISUAL THEATRE**

**SUITABLE FOR HIGH SCHOOL STUDENTS.** A workshop for students with or without theatrical experience teaching basic skills in "Visual Vernacular". Visual Vernacular is a storytelling form that is characterised by the use of a combination of a graphically clear signs and miming actions.

### **LECTURE/DEMONSTRATION**

**SUITABLE FOR ALL AGES.** If you don't have room for a performance, Theatre of the Deaf can come to your school and present a discussion about the Company and our work. We can also present a short solo performance and question/answer time.

### **AVAILABILITY FOR 1996**

<b>TERM 1:</b>	19 February - 29 March
<b>TERM 2:</b>	22 Apr - 3 May • 10 June - 28 June
<b>TERM 3:</b>	15 July - 27 September
<b>TERM 4:</b>	14 October - 29 November

## **YES I WANT THEATRE OF THE DEAF IN OUR SCHOOL!**

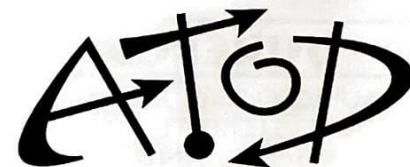
If you want to book this unique and dynamic Company for your school book now! Please complete the booking request form enclosed and return to Theatre of the Deaf as soon as possible.

### **FURTHER INFORMATION**

Australian Theatre of the Deaf  
6/245 Chalmers Street,  
Redfern NSW 2016 Australia  
Ph: (02) 310 1255 • Fax: (02) 318 2186  
TTY: (02) 318 2835



This project has been made possible with assistance from the New South Wales Govt through the Ministry for the Arts



**AUSTRALIAN THEATRE OF THE DEAF**

## **SCHOOL PERFORMANCES 1996**



**ACTIONS SPEAK LOUDER THAN WORDS**



## JUKEBOX

MUSIC, DANCE, COMEDY  
AND STORYTELLING -  
PICK A SONG AND SIGN IT!

**Age Range:** Grades 3 - 6 and Year 7 - 8  
**Duration:** 50 mins plus Question & Answer time.  
**Cost:** \$4.00 per student  
**Minimum Audience:** 120 **Maximum Audience:** 300  
**Space Required:** 5 metres square  
**Other Requirements:** Access to power

Using Theatre of the Deaf's dynamic form of sign singing, *Jukebox* is relevant, energetic and entertaining theatre for older children and early teenagers. This new performance presents Deafness with a difference. Students select well known popular songs from a list which are performed by our Deaf actors using sign singing - the interpretation of songs into Australian Sign Language. Between the songs the actors present their own stories about Deafness and life in the Deaf community.

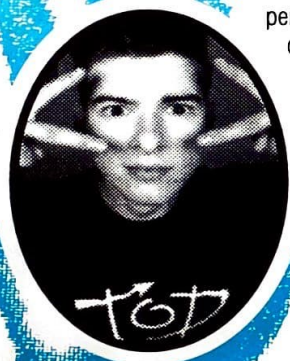
The show highlights audience participation and interaction with the actors and students learn a song in sign language. *Jukebox* brings together music, comedy, dance, visual theatre and story telling in an innovative way dispelling misconceptions about Deafness. This is a unique performance, introducing discussion about difference, self esteem, communication and acceptance.

**Writer:**  
Gillian Minervini

**Director:**  
Mike Canfield

**Designer:**  
Philippa Playford

**Choreographer:**  
William Forsythe



## WHAT THE SCHOOLS SAY:

*"Actions do speak louder than words. Fascinating. It was mad, excellent, funny. It's the best I've seen."*

Chester Hill Primary School

*"Excellent! Fun! Wow! A great performance with lots of room for follow-up for the kids."*

King Park Primary School

*"An excellent performance - the acting was 'heaps cool'. It must have been terrific - the children are never that quiet for 50 minutes!"*

Loftus Public

*"Students were totally captivated... your presentation was excellent...extremely good example of communications which is our unit of study."*

Queenswood Primary School

*"It kept the children interested throughout. A positive message and well delivered."*

Ulladulla Primary School

## SHOW AND TELL

FAST MOVING, EDUCATIONAL  
ENTERTAINMENT FOR LITTLES.

**Age Range:** Early Childhood-Preschool and Infants (up to & including Yr 2)  
**Duration:** 30 mins plus Question & Answer time  
**Cost:** \$2.50 per student  
**Minimum Audience:** 120 - negotiable  
**Maximum Audience:** 300  
**Space Required:** 5 metres square

*Show & Tell* is a vibrant half hour performance that will delight youngsters with Theatre of the Deaf's energetic visual imagery, fun and humour. Using visual theatre the actors make two famous Australian childrens' stories come to life. Students will also learn to sign along to a well known childrens' song, becoming involved in the performance and discovering the world of sign language. Designed to cater for those with a short attention span, *Show & Tell* is an entertaining and educational performance exposing young people to Deafness and difference.

## THE VERY FIRST DAY

MASKS & LOTS OF LAUGHS!

**Age Range:** Grades K - 6  
**Duration:** 45 mins plus Question & Answer time  
**Cost:** \$4.00 per student  
**Minimum Audience:** 120  
**Maximum Audience:** 300  
**Space Required:** 5.5 metres square

This is a great opportunity for children to see non-verbal communication in action and to experience the wonderful world of the mask. The charm, humour and naivety of our masked characters and the trouble they get into will help students realise that everybody is nervous when starting something for the first time. In *The Very First Day* everybody makes mistakes but, if you can overcome the fear of making them, things are already looking better. *The Very First Day* is a positive and uplifting show for young children teaching them that overcoming fear leads to success.

Devised and Directed by Russell Cheek.  
Designed by Philippa Playford