

## SIDNEY MYER MUSIC BOWL Wheelchair Access

A. Entry from Linlithgow Ave. at driveway near Queen Victoria Monument is best as there are no steps, tracks are bitumen all the way (but most of the distance is uphill).  
B. Linlithgow Ave. near King George V Monument, flat entry most of way but half distance is across rough surface.  
Bitumen pathways within Music Bowl Grounds are in good condition.

### Phones

Only one pay phone backstage which is difficult to get to and is not for general public use (but could be used in an emergency). If you are relying on taxis then it is advised that you book the home journey beforehand.

### Toilets

One unisex wheelchair toilet—long distance from seating area. Path could be better, assistance may be needed for wheelchair users.

### Special Conditions

A. During Melbourne Symphony Orchestra Shows, last two rows of seats are reserved for elderly or disabled until 10 minutes prior to concert.  
B. During ice skating season wheelchairs are allowed on stage—entry is via a temporary ramp from seating area.  
C. Taxis may drop off disabled passengers in the driveway—it is recommended that a prebooked pickup time is given for return journey as it is difficult to obtain use of public phone.  
D. There is no staff assistance for people with disabilities.  
E. If you have any reason to contact the Music Bowl Caretaker ring 617 8211.

## Write to Us

Make the most of the 1989 EASE Newsletters. Tell us what you've seen, how you got there and whether or not you enjoyed the show. Write us a review. Send us photographs or cartoons. Use the newsletters to pass on advice to others so that they can learn by your experience.

The EASE Newsletter will only continue to be interesting if our readers write articles and letters. The EASE staff don't want the newsletter to become a rag full of our own words. Please write.

### EASE NEEDS YOUR SUPPORT

At the time this newsletter goes to press EASE is not assured of ongoing funding during 1989 and beyond. Arts Access is generously supporting the project at present but cannot continue to do so indefinitely. The Federal Department of Disability Services and the Victorian Department of Sport and Recreation are contributing towards the Project Officer's salary, we have however no other certain funds.

Could you write letters of support to us. Letters about how EASE has affected your life. We will use these to convince the "powers that be" to take our funding applications seriously.

Postage  
Paid  
Australia

## ARTS ACCESS SOCIETY NEWSLETTER

Registered by Australia Post  
Publication No. VAW7218

Ms Marie Van Baer  
Disability Services  
Public Library  
328 Swanston Street  
MELBOURNE  
VIC 3000

If undelivered return to:

Arts Access Society Inc.  
109-111 Sturt Street, South Melbourne, 3205. Australia.

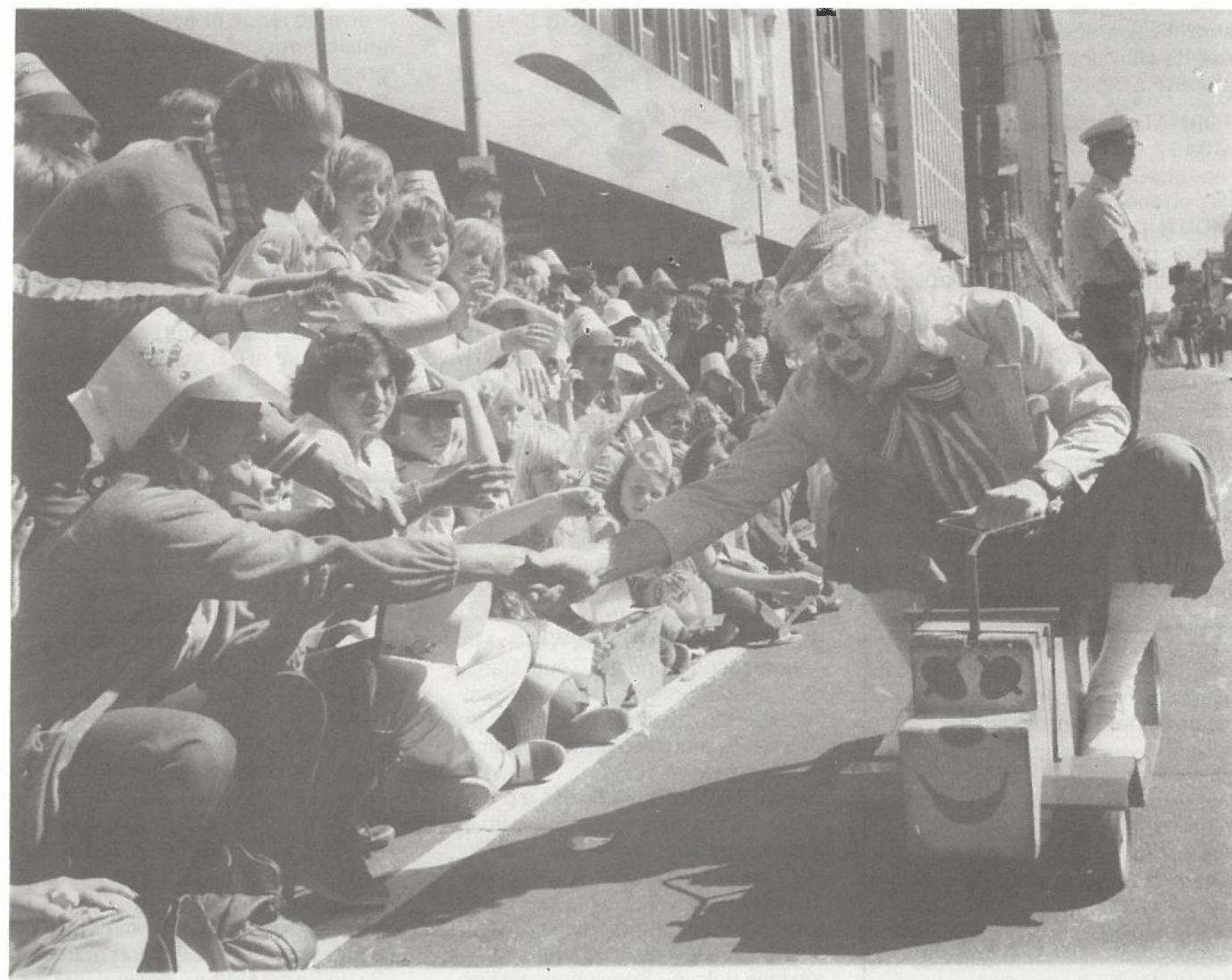
# Ease



ARTS  
Access

Newsletter of Arts Access Society Inc. - EASE Supplement

FEBRUARY 1989



The Moomba Procession Photo: Tony Terry

Moomba next page

### Welcome to the first EASE newsletter for 1989.

Our plans for this year are already starting to take effect. Over the Christmas period Maree Ireland, a student from Melbourne University, has worked on a venue assessment form. This form will be distributed with our tickets. Once returned and collated the notes will give us an impression of Melbourne's venues, with anecdotes and personal advice. We hope eventually to combine our venue notes with your comments in a guide to Melbourne's venues.

If you collect your own information on venues and transport we would be interested in discussing this with you and/or obtaining copies of your information.

We also plan during 1989 to expand our variety of shows and events. This is

a difficult task as last year we distributed tickets to more than 130 shows and sporting fixtures

There are exciting things to see in Melbourne this year. The Bicentennial may have generated some extra events however Melbourne has always had an exciting and varied cultural life. In sport you have the Australian Masters at Huntingdale, The Australian Motorcycle Grand Prix, The VFL Season, the Caulfield and Melbourne Cups and the national gymnastics championships. In the Arts there is the Melbourne Symphony Orchestra, Australian Ballet, Australian Opera, Victorian State Opera, Musica Viva, Melbourne Theatre Company and Playbox seasons. Not to mention all the visiting shows and artists for 1989.

If you want to take part, ring us as often as possible.

### VENUE NOTES

**SIDNEY MYER MUSIC BOWL**  
Linlithgow Avenue  
Melbourne

Seating Capacity: 2000 wooden seats 13000 grass area—no seats  
Wheelchair Capacity: Flexible—wheelchairs situated last row behind seats—in front of grass. For safety reasons NO wheelchairs are allowed in aisles.

### Parking

Two "Disabled" parking bays in Linlithgow Avenue. (Alexandra Ave. end near Queen Victoria Monument) approximately 25 metres from driveway entrance. If you have difficulty in walking or pushing wheelchairs uphill or long distances you may be dropped off at the top of the driveway hill but the car must be parked in the street.

continued back page



## EASE 699 8497

### ENTERTAINMENT ACCESS SERVICE

EASE aims to assist people with special needs to attend Melbourne's mainstream entertainment by providing information, social support and incentives.

EASE also aims to encourage promoters and venue management to ensure physical access is feasible at all events within the Melbourne metropolitan region.

### INFORMATION HOTLINE:

699 8497

Advice about venue accessibility, what's on and booking procedures.

### BI-MONTHLY NEWSLETTER

Information, articles, letters and announcements of tickets available through EASE.

### TICKET SCHEME

Low cost tickets to a variety of entertainment events. We would like to acknowledge the generous support over the past two months of:

Victorian Arts Centre Trust, Melbourne Theatre Company, Frontier Touring Company, Australian Boys Choir, Melbourne Symphony Orchestra, Michael Edgley International, Tennis Australia, Australian Ballet School, Hocking and Woods, FEIPP.

### EASE STAFF

Chris Milton, Co-ordinator  
Barbara Milne, Administrative Assistant

Jeanette Pierce,  
Secretary/Bookkeeper

### VOLUNTEERS

David Eustice  
Christine Duncan  
Tracey Willis

### EASE FUNDING

The EASE co-ordinator's salary is presently funded by the Federal Department of Disability Services and the Victorian Department of Sport and Recreation. Other costs are being covered by Arts Access.

### BECOME A MEMBER OF ARTS ACCESS

The Arts Access Society created EASE and now supports the scheme. Arts Access is a non-profit organisation committed to providing access to the Arts for those groups and individuals disadvantaged by physical, intellectual, emotional or financial conditions. By becoming a member you not only support EASE but also the Society's work. For further information ring 699 8299 or write to Arts Access 109-111 Sturt Street, South Melbourne 3205.

## HOW TO BOOK WITH EASE

Ring 699 8497, discuss with Barbara or Chris what you would like to see and where you would like to sit. Make out a cheque to Arts Access for the appropriate amount and post it to Arts Access, 109-111 Sturt Street South Melbourne 3205. We will either hold the tickets for you, post them or arrange for them to be at the box office—whichever you prefer. It does help us if you can provide a stamped, self-addressed envelope.



The theme for Moomba this year is "Moomba Makes Music." The festival spans 11 days between Friday 3rd March and Monday 13th March. This is Moomba's 35th year and the

### THE MOOMBA RIVER PROGRAM

**WHERE:** Most river activities take place between Princes Bridge (close to Flinders Street Station) and Swan Street Bridge (directly opposite the National Tennis Centre).

**BEST ACCESS AND VIEWING:** Most people recommend the South Bank, near Boat Sheds, with access from Jeffries Pde. or along the Bicycle track. Batman Avenue also provides some good viewing.

**PARKING:** Parking is always a problem. In the past parking for people with a disabled parking sticker has been permitted in Alexandra Avenue near "The Dorchester" (best to enter near Hoddle Bridge entrance and drive straight in—from all other entries there are long delays). Sometimes parking has been permitted in Jeffries Pde. (best parking spot). For both areas however it is necessary to show disabled parking label, and to ask gate attendants or staff to allow you entry.

**CARNIVAL AREA:** The carnival area lies between Alexandra Ave. and Jeffries Pde. Access for wheelchairs is only average, some bitumen paths and some grassed areas however the tracks near "side shows" are often covered in sand.

**OTHER SERVICES:** Ambulance, Police and Nursing Mothers will all be present. St. John Ambulance personnel and Nursing Mothers will be on the southern edge of the lawn east of The Dorchester on Jeffries Pde.

**THE PROGRAMME:** Includes waterskiing, Dragon Boat Races, Birdman Follies, Floating Stage, Fire Works, Henley Regatta, Great

**festival offers free entertainment and a diverse range of events embracing music, sport, carnival and art. It is a great opportunity for people to get out amongst their fellow Melburnians.**

Activities are held in various indoor and outdoor venues throughout the city including The City Square, Bourke Street Mall, Alexandra Avenue Underpass, the Yarra, Alexandra Gardens and the Myer Music Bowl. If you want to know more about Moomba don't hesitate to give us a call on 699 8497. Below are some details of the River Program.

This year ARTS ACCESS has a float in the Monday holiday procession (13th March). If you have some time, why not join the crowds at about 10am?

Aluminium Can Race and Ski Show. Here are some of the Highlights:

**DRAGON BOAT RACES**, 8am - 4pm  
Sunday 5th March. Heading up river toward Swan Street Bridge. These races always provide fun and a little drama.

**SKI JUMP**, every day of the festival between 7.45pm and 8.30pm. The winner is the skier with the longest jump, they may make this jump at any time over the eleven days.

**FLOATING STAGE**, every day between 8.30pm and 9.30pm, up and down river between the two bridges.

Entertainment floating by.

**BIRDMAN FOLLIES**, 1pm - 4pm  
Sunday 5th March. Takeoff point is the Swan Street Bridge, contestants for the \$10,000 prize have to fly themselves over 50 metres from the bridge. If this distance is not reached there are consolation prizes of \$1500 and \$500.

**FAMILY ENTERTAINMENT STAGE:** In the Alexandra Gardens will include the Victorian Youth Ballet, Dollarmite Show, Sight Act, Shinanigans.

**MYER MUSIC BOWL:** Shows will feature the MSO, George Dreyfuss Concert, Australian Ballet, Spastic Society Children's Concert, Brass Band Concert, Rock Concert.

**MERRY MUSIC TRAIN:** Three miniature engines—Henry, Thomas the Tank Engine, and a steam locomotive will operate in the Alexandra Gardens. The trains stop at six stations with various activities at each.

## Consider this summer's free entertainment

### SIDNEY MYER MUSIC BOWL

Presented by the University of Melbourne in association with the Australian Broadcasting Corporation  
MELBOURNE SYMPHONY ORCHESTRA

Dates: 8pm 4, 8, 11, 15th Feb.

These concerts are extremely popular and attract thousands of people on the cool summer nights of early February—a great community event. The music is all familiar classical music. The wheelchair area and last row of seats is reserved for the elderly and people with disabilities until 10 minutes before each concert begins.

### BOSWELL FOR THE DEFENCE

Dates: 2pm Saturdays 25th February;  
4, 11, 18, 25th March

Venue: Playhouse Theatre

Cost: \$15.50

Leo McKern plays James Boswell in a play by Patrick Edgeworth. The play, based on Boswell's journals and letters, tells of the old lawyer's 1793 defence of Mary Broad, a woman condemned to death for escaping from the penal colony of Australia.

### MELBOURNE SYMPHONY ORCHESTRA

1989 Season

Venue: Melbourne Concert Hall

Cost: \$7.10

EASE has access to a limited number of tickets to the 1989 season. For more information please ring us.

### ENTER THE EUROPEANS AN ENTERTAINMENT

Dates: Preview 8pm 1st March

8pm 2, 3, 4, 7, 8, 9th March

Schools Matinees 2pm 3,

6, 10th March

Venue: Footscray Arts Centre

Cost: \$4.50

Enter The Europeans is billed as a "great introduction to the liveliness and richness of theatre .... the heightened performance style for the piece makes enjoyable viewing for 15 year olds and up." Writer: Simon d'Orsogna, Director: Anna Borghesi.

The above shows are only a selection of tickets available through EASE. We have tickets coming through the office in a constant flow. To make the best use of our services you need to ring us regularly. The more often you talk to us the more we know of your interests and the more often we will think of you.

### WE WILL BE NEGOTIATING FOR:

"PANASONIC" CUP, VFL SEASON, BASKETBALL SEASON, VICTORIAN STATE OPERA SEASON, STATE FILM THEATRE SESSIONS, AUSTRALIAN MASTERS HUNTINGDALE.

### NORTHCOTE AMPHITHEATRE

Times: All concerts start at 2pm

Dates: 5 & 12th Feb. Victoria State Opera; 19th Feb. Victoria Police Band; 26th Feb. Music from around the world—ABC Music Deli; 5th Mar. The Band of the 3rd Military District; 12th Mar. Latin American Concert; 19th Mar. The Australian Opera.

The Northcote Amphitheatre (Fairfield Park, Heidelberg Road, Northcote) is a steeply graded amphitheatre constructed of bluestone. You would be advised to take hats and a rug or cushions. It is difficult to get to for people with wheelchairs, the paths and surrounding area are not well maintained. The concerts however provide great variety and a good community feeling.

## Tickets

# 699 8497

### BEYOND REASONABLE DOUBT

Dates: February

8pm Mondays and Tuesdays

2pm Wednesdays and

Saturdays

Venue: Comedy Theatre

Cost: \$15.50

Beyond Reasonable Doubt is a courtroom drama which incorporates flashbacks to the scene of the crime. This is Jeffrey Archer's first play and stars Frank Finlay and Nyree Dawn Porter.

### MOOMBA PARADE

Date: 10am 13th March

Venue: Museum of Victoria's front lawn

Cost: Free

For many years now Moomba has reserved a seating area for people with special needs. EASE will be distributing the tickets this year. The seating area enables people to park close by and to get a clear view of the parade. The area is used by many groups from various backgrounds.