

2000 festival



CONTENTS

SPECIAL EVENTS



COMEDY



DANCE



MUSIC AND MOVEMENT



MUSIC



POETRY / NARRATIVE



THEATRE / DANCE



WORKSHOPS



VISUAL ARTS



ARTS IN ACTION is the leading arts and disability organisation in SA, providing new opportunities to highlight the creativity of people with a disability. Arts in Action initiates a wide range of projects which are particularly effective in building social and community networks and encouraging the development of new skills. The High Beam 2000 Festival has developed from Arts in Action's many years of experience as advocates for disability and the Arts. High Beam 2000 Festival is part of the cutting edge of the global disability culture movement which is breathing new life into the Arts.

The SPARC Disability Foundation's mission is to enhance the quality of life for people with a disability, through participation in recreational activities of their choice. The High Beam 2000 Festival is a celebration of the artistic talents of people with a disability. It is a demonstration of the value of a collaborative approach in bringing together the creative ideas of people with and without a disability in the community with resources of sponsors and supporters. The SPARC Disability Foundation is proud to be associated with this wonderful festival.

SPECIAL EVENTS

OPENING CEREMONY

High Beam 2000 will be launched with an opening parade and concert that promises to be LOUD, LARGE and LAVISH!! Weaving a rhythmical and colourful journey along King William Street through to Elder Park where the entertainment will begin. As 22% of South Australia's population have a disability, High Beam 2000 Festival presents an inspiring and unique opportunity for all South Australians to discover the wealth of talent within our midst and from abroad.

TASTE OF HIGH BEAM (Auslan signing)

Come along and sample some of the extraordinary talents that will be showcased in High Beam 2000 Festival. Experience the flavour of our international and national artists who will tantalize your taste buds with a sumptuous smorgasboard of performances. Hosted by Peter Vance, the Taste of High Beam features guest artists:

Bernadette Conlon. Award winning piano accordionist.

Alan Shain. Alan hails from Canada and comes to Adelaide with his one-man show, "Still Waiting for that Special Bus".

David Roche. "The Church of 80% Sincerity" is an acclaimed, award-winning one-man show which has played to enthusiastic audiences around the U.S.

Jazopera. From Sinatra to Sutherland - ranging from jazz to opera with the eclectic combination of well renowned and exceptional pianist - Jann Rutherford and the voice, style and touch of comedy of Janelle Colquhoun.

Nepal Disabled Musical Assoc. (India). A performance of Nepali songs and dance representing the typical Nepali culture and religion.

Frankie Armstrong, internationally respected singer and voice teacher from the U.K.

BAROSSA HIGH BEAM 2000 FESTIVAL

Through Barossa Leisure Options, High Beam 2000 Festival, has become involved in a country outreach celebration. In the spirit of the area becoming accessible to all, this special event will bring together many community groups to explore their creativity and artistic expression. Come along & join in the workshops and celebrate your musical talents with Jerome Lyons, maker of unusual & fun instruments. Discover hidden talents as you explore music & movement in the Dance/Drama workshop. All this plus more, with poets, performers and a special guest appearance by highly acclaimed piano accordionist, Bernadette Conlon. Join us for an entertaining and fun-filled time around the bonfire (weather permitting) at Heinnemann Park, Tanunda. Performance and sing-a-longs with the Barossa Drama Society and others.

NICAN CONFERENCE

For further information contact Danielle Bayard on (08) 8212 9880.

Special performances open to the general public include:

ETHICAL WILLS

Presented by: Arrangement Productions.

Conceived and directed by Helen M. Flinter-Leach

For 30 minutes "The Artistic Thinkers" each give a brief anecdotal story showing their ideas on Style and the advantages of Art in the achievement of 'good' emotional and social well-being of people in all facets of Australian life.

FLORAL TRIBUTE

Presented by: Arrangement Productions.

A video presentation showing fragments of the play "Floral Tribute", with comments from actor, Barbro Spry, writer, producer and director, Helen M Flinter-Leach and emerging artist, Patricia Ryan.

Friday 28 April

Time: Parade departs at 12.45pm

Venue: From Victoria Square to Elder Park next to our Festival Homestead, Adelaide Festival Centre
Cost: FREE

Sunday 30 April

Time/s: 11am

Duration: 4 hours

Venue: Banquet Room, Adelaide Festival Centre
Cost: \$50 Includes entertainment, light lunch & refreshments
Bookings: BASS 131 246

Sunday 30 April

Time: 10am-4.30pm

workshops/activities,
5pm-7pm night entertainment

Venue: Angaston Town Hall, Washington Street, Angaston
Cost: Half Day \$5, Full Day \$7

Bookings: Pam Young on 8563 8412.

Light Refreshments available for a small donation. Bring your own chair.

Sunday 30 April -

Tuesday 2 May

Monday 1 May

Time/s: 2.45pm

Venue: Marquee, Adelaide Festival Centre
Cost: \$10, Conc. \$8
Bookings: NICAN 1800 806 769

Tuesday 2 May

Time/s: 1.45pm

Venue: Marquee, Adelaide Festival Centre
Cost: \$10, Conc. \$8
Bookings: NICAN 1800 806 769



PETER VANCE

THE INAUGURAL HIGH BEAM AWARDS FOR LITERATURE AND MUSIC.

Funded by the Department of Human Services, the High Beam Awards for Literature and Music will be offered for the first time as part of the High Beam Festival. Twenty prizes totalling \$3600.00 will be awarded for poetry, prose, composition and performance/presentation. The Minister for Disability Services, the Honourable Robert Lawson QC MLC, will launch the Awards and assist with the presentations.

Tuesday 2 May

Time/s: 7.30pm
Duration: 3 hours
Venue: Governor Hindmarsh Hotel (59 Port Road, Hindmarsh)
Cost: FREE
Enquiries: Mary Combe, Awards Coordinator on (08) 8379 9679

GLOBAL UPDATE AND DISCUSSION ON DISABILITY CULTURE *(Assist signing)*

Presented by: Tony Doyle (including radio program launch)

A panel discussion looking at the rapidly developing arts led global disability culture movement. Panel guests will be drawn from High Beam's international program and all are welcome to come along and contribute to this vibrant discussion. Also the launch of the *Artists on the Edge*, a CD of 5, 10 minute radio features on performers with a disability.

Wednesday 3 May

Time/s: 10am
Duration: 2 1/2 hours
Venue: Banquet Room, Adelaide Festival Centre
Cost: FREE

ODD SOCKS DAY

Do something odd on this day and take part in Odd Socks Day. An initiative of the Royal Society for the Blind (RSB), 'Odd Socks Day' encourages people to wear odd socks for a day, give a donation of \$2 or more to help blind and vision impaired South Australians.

Friday 5 May - All day throughout the State.

Contact RSB on 8223 6222

"LIGHTS OUT"...

It's Party Time!! - a celebration for all the volunteers, performers, artists and organisers who have contributed to the success of this High Beam 2000 Festival. Get into the spirit of the party and enjoy the entertainment & light refreshments as we bring down the lights on High Beam 2000 Festival. Bar facilities available.

Sunday 7 May

Time: 4.30pm - 8.30pm
Venue: Banquet Room, Adelaide Festival Centre
Cost: FREE

COMEDY

BEND STRAIGHT

Presented by: Philip Patston (NZ)

New Zealand's first and only gay, vegetarian, pierced, wheelchair-using comedian, Philip is becoming a familiar face in the comedy industry, both on stage and television. Philip has built his success not despite his disability and sexual orientation, but because of his ability to use his difference to comic effect.

Friday 28 April, Wednesday 3 & Thursday 4 May

Time: Fri. 28, 9.30pm.
Wed. 3, 10pm. Thurs. 4, 9.30pm
Duration: 1/2 hour
Venue: Lyric Room, Adelaide Festival Centre
Cost: \$10, \$8 conc.
Bookings: BASS 131 246



New Zealand's

first and only gay,
vegetarian, pierced, wheelchair-using
comedian

STILL WAITING FOR THAT SPECIAL BUS

Presented by: Alan Shain (Ottawa, Canada) (Auslan signing)

Alan has a hot date tonight. Because he uses a wheelchair, Alan has to wait for Para Transpo. Will they ever pick him up before the night is over? The longer he waits nervously before his first date with some one new, the more he fantasises - is she going to be the woman of his dreams, or is she going to be the woman of his worst nightmare? There is only one way to find this out, but it all depends on his bus showing up.

**Friday 28 April, Friday 5
& Saturday 6 May**

Time/s: Fri. 28, 8.15pm:
Fri. 5, 9.30pm: Sat. 6, 8pm
Duration: 1 hour
Venue: Lyric Room,
Adelaide Festival Centre
Cost: \$10, \$8 conc.
Bookings: BASS 131 246

THE CHURCH OF 80% SINCERITY

Presented by: David Roche (US) (Auslan signing)

The Church of 80% Sincerity is a highly acclaimed, award-winning one-man show which has played to enthusiastic audiences around the US. As a person with a facial difference, David Roche is a one-man show, both on and off stage. David was born with "extensive cavernous hemangioma", - a benign tumour consisting of blood vessels, on the left side of his face and neck. The radiation therapy he received as an infant caused the lower part of his face to stop growing and left radiation burns on his temple and eyelid. In his show, David conveys his unique experiences from childhood to present day, imparting his mesmerising personality that is courageous, humorous and inspirational.

**Friday 28 April, Friday 5
& Saturday 6 May**

Time/s: Fri. 28, 7pm:
Fri. 5, 10.30pm: Sat. 6, 9.30pm
Duration: 1 hour
Venue: Banquet & Lyric Rooms,
Adelaide Festival Centre
Cost: \$10, \$8 conc.
Bookings: BASS 131 246

HARMONY WALK - ACCESS FOR LIFE

Presented by: Cane 'n' Able - Peter Vance (Qld) & Aviva Sheb'a (SA)

We take the simple acts of our next step, our next breath for granted. Come and walk in the shoes of a VIP (vision impaired person) and talk in the tones of a LIP (lung impaired person) as they embrace Adelaide 2000 - together.

**Sunday 30 April
& Friday 5 May**

Time: Sun. 30, 8 pm:
Fri. 5, 6pm: Sunday prior to
"Things That Go Bump in the Night."
Friday prior to "The Elbow Room"
Venue: Sun. Banquet Room & Fri.,
Lyric Room, Adelaide Festival Centre
Cost: Included in ticket price of above
productions.

COMEDY & BLUES NIGHT (Auslan signing)

Peter Vance will host this night of frivolity, side-splitting humour and great toe-tapping, hip-wiggling, get down, get dirty... music!!! Join the irrepressible talents of comedians Liz Navratil, David Roche, Alan Shain and our own Adam Hills coupled with the beat of the 12 bar blues of the Chris Finnen Blues Band.

Friday 5 May

Time: 8.30pm - late
Venue: Banquet Room,
Adelaide Festival Centre
Cost: \$15, \$10 conc.
Bookings: BASS 131 246

DANCE

BODY IN QUESTION

Presented by: Igneous (NSW) Starring: James Cunningham

The true story of a dancer who - after paralysing one arm in a motor cycle accident - journeys through the world of medicine, rehabilitation and disability, in recovery of self expression. "Body image" and concepts of "normality" are questioned. It combines dance, video, slides, voice-over, original music and a life size puppet. James Cunningham is a professional dancer and exciting emerging choreographer.

**Tuesday 2 - Saturday 6 May
Matinee Wednesday 3 May**

Time/s: Tues - Thurs & Sat. 8pm,
Fri, 6pm, Wed matinee 11am
Duration: 1 hour
Venue: Madley Dance Theatre,
Uni of Adelaide, Kintore Avenue
Cost: \$12, \$8 conc, \$5
(schools and groups of 10 or more)
Bookings: BASS 131 246

POLYPOLY

Presented by: Weave Movement Theatre (Victoria)

Weave Movement Theatre will present 3 dance/physical theatre pieces which combine dance, theatre and vocal work. The main piece involving the whole company is called 'Room with a View' and was devised by the company in collaboration with Sally Chance. It is fast-paced, breathless and exciting. The 3 other pieces involve company members in duet and trio, devised with an edgy combination of improvisation and structure, round the physicality of people with and without disabilities working together.

Saturday 6 & Sunday 7 May

Time/s: Sat. 12.30pm & Sun. 1pm
Duration: 1 hour
Venue: Banquet Room,
Adelaide Festival Centre
Cost: \$10, Concession \$6
Bookings: BASS 131 246

MUSIC & MOVEMENT

SEE SAW

Presented by: See Saw Ensemble and directed by Sally Chance.

You don't know what's there... until you're in it! Stepping off a kerb or stepping out of a plane. Same difference. The space between taking the step and arriving at the other end is a journey of risk and ritual, taking a moment... or a lifetime. See Saw is a multi-faceted project of Arts in Action Incorporated, involving community-based and professional artists with a vision impairment, experiencing music and dance for personal development and performance.

*Musical Director: Robert Petchell
Composers: Colin Offord and Chris Finnen
Designer: Gaelle Mellis
Lighting Designer: David Gadsden
Vocalist: Frankie Armstrong
Musician: Chris Finnen*

See Saw is a project of Arts in Action. Arts in Action thank the following organisations for their generous support: the Community Cultural Development Fund of the Australia Council (the Federal Government's funding and advisory body); the South Australia Government through Art SA and Health Promotions SA & Festivals Australia.

*Thursday 27 April (Preview)
Friday 28 - Saturday 29 April*
Evenings 8pm, Fri. matinee 3pm, Sat. matinee 2pm
Arrive 45 minutes prior to show times for performances in the foyer of the Space Theatre by Michelle Threadgold, The Tomatoes & Corrina Paget
Duration: 50 minutes
Venue: Space Theatre, Adelaide Festival Centre (wheelchair accessible)
Cost: \$10, \$7 conc., \$5 group bookings (group of 5+)
Bookings: BASS 131 246

You don't **know** what's there
until you're **IN** it!

BON VOYAGE

Presented by: Sound Art Productions

Stylish cabaret with a whimsical blend of romance, humour, pathos, puppetry and adventure.

Come cruising through time with Hilary O'Neill and David Erskine as they present some of the great songs from the '20s, '30s and '40s. Set aboard the good ship Alabama Moon, this lively production combines puppetry and visual theatre with fabulous songs and a porthole glimpse of the struggles and intrigues of life on the high seas.

*Wednesday 3
& Saturday 6 May*

Time/s: Wed. 8.30pm
& Sat. 2.30pm & 6pm
Duration: 1 hour
Venue: Banquet Room, Adelaide Festival Centre
Cost: \$15, \$12 conc.
Bookings: BASS 131 246

MUSIC AND DANCE

Presented by: Nepal Disabled Musical Association (India)

A performance of Nepali songs and dance that represent the typical Nepali culture and religion.

Towards the evening the people of the countryside gather in one place for their meal, to celebrate and share happy times together. Such celebration is called 'RODHI' in Nepali and is famous particularly to the western side of their country. They have their own traditional dress, musical instruments and songs that are worked on the basis of love and grief, caused by the departure of man to a foreign country to earn money. For a lesson on Nepalese culture, don't miss this one!

Friday 28 & Saturday 29 April

Time/s: Fri. 2.30pm, Sat. 11.30am
Duration: 15 minutes
Venue: Banquet Room foyer, Adelaide Festival Centre
Cost: FREE
Also guest performers at the Showcase Cabaret, Friday 28 April



FINE LINES

MUSIC

MY LIFE MY LOVE - GLIMPSES OF ANOTHER WORLD!

Presented and developed by Pat Rix with Steve Maybaw.

Directed by Mary McMennamin

The Holdfast Bay Community Choir, the world's first truly integrated choir, for people of all abilities. Come along and enjoy the wonderful voices of this exceptional choir as it shares with us a story based on a true-life experience of love, set in the 1930's at the end of the depression. The choir reveals an exciting new development in opera. A work in progress of South Australia's first ever community opera - Initiated in co-operation with Minda Inc and The Holdfast Bay Community Centre.

The Holdfast Bay Community Choir gratefully acknowledges the support of Minda Inc, the Holdfast Bay Community Centre, the CCDF of the Australia Council and Arts SA.

AN AFTERNOON OF CLASSICAL DELIGHTS

Presented by: Beverley Margaret

Love of music enables the performers of Classical Delights to reach heights never thought possible, given their disabilities. Join Beverley Margaret in her celebration of voice with special guests, Vince Rugari, Joel Baligod, Bona and introducing thirteen year old tenor, Christos Manies.

Special guest performance by Agim Husho.

CLUB CONTAGIOUS

Presented by: Arts in Action

Club Contagious has been operating for over 5 years and is a globally unique "disability culture" event. Featuring musicians & artists with and without disabilities, combining creativity, fun and music. Join MC - Lea Baum-Rebane and the talents of Xpresiones - (Echoes of the Andes), Henry Manetta & Beige S.A. - (Electronica, Don't Miss It), tingali (acoustic, powerful), Dean Bird (Australian-Celtic Troubadour).

WELCOMFRONT

Presented by: Cane 'n' Able - Peter Vance (Queensland)

A showcase of original songs tracing important steps in Peter's life since High Beam 1998 Festival as a visually impaired person. The music embraces the wider disability art and community cultures.

Peter's rich baritone voice continues to entertain and inspire audiences across the jazz, blues and folk styles - always with a twist of humour.

HIGH BEAM CLUB

Come along & enjoy a night of music and comedy in a friendly, relaxed atmosphere. Laugh all night long at the comedic antics of Philip Patston, Liz Navratil and MC, Adam Hills or dance the night away to the West African rhythmic sounds of Bantaba Binde or the original sounds of the talented semi acoustic, folk influenced, Trotter & Burchell.

FINE LINES CD LAUNCH

Presented by: Fine Lines Band

The launch of the second CD from the Fine Lines Band featuring original songs from band members and friends of the band. Exploring life and issues relevant to survivors of mental illness. With special guests Michelle Threadgold, Matté O'R Yeleah and Corrina Paget.

Sunday 30 April

Time/s: 2pm & 4pm

Duration: 1 hour

Venue: State Opera Theatre

(216 Main Rd Netley,

cnr Richmond Rd,

enter via Marlon Rd)

Cost: \$5, Children \$2

Bookings: Tickets at the door or bookings on (08) 8449 5118

Saturday 29 April

Time/s: 3pm

Duration: 1 1/2 hours

Venue: Banquet Room,

Adelaide Festival Centre

Cost: \$12, \$6 conc.

Bookings: BASS 131 246

Sunday 30 April

Time/s: 3pm

Duration: 4 hours

Venue: Governor Hindmarsh

Hotel, 59 Port Road, Hindmarsh

Cost: \$4, \$3 conc.

Enquiries: (08) 8224 0799

Friday 28 April

& Wednesday 3 May

Time/s: Fri. 6.45pm

& Wed. 6.15pm

Duration: 20 minutes

Venue: Lyric Room,

Adelaide Festival Centre

Cost: FREE

Thursday 4 May

Time/s: 8.30pm

Duration: 3 hours

Venue: Banquet Room,

Adelaide Festival Centre

Cost: \$12, \$10 conc.

Bookings: BASS 131 246

Friday 5 May

Time/s: 8pm

Duration: 3 hours

Venue: Cabaret Space,

Lion Arts Centre

Cost: FREE



BEVERLEY
MARGARET

SHOWCASE PROFILES

COMRADE SPARKY

Presented by: Janice Florence and Trevor Dunn

As founding members of Weave Movement Theatre, Janice and Trevor discovered a mutual unhinged, absurd and sometimes blackish sense of humour. Perhaps this is connected with having a disability. Maybe they would have been bent anyway! They incorporate their mad verbal antics, dancing, jumping around, bad foreign accents, tasteless singing, pinko political slogan and discordant accordion playing.

SYMPATHY ORCHESTRA

Dance to the driving rhythms and galactic soundtrack style music of this trail blazing band.

Featuring the outstanding guitar work of Julian Barnett.

MUDMEN

A performance of original songs from their 3 CD releases. Mudmen will be on stage playing in the style of contemporary rock, guaranteeing a night of fun and good company.

LIZ NAVRATIL

A comical look at the day to day life of a person with cerebral palsy, particularly from a woman's point of view

CHRIS FINNEN BLUES BAND & 360 DEGREES

South Australian, Chris Finnen has been an outstanding exponent of blues and world music around Australia for the past 30 years. His ingenious guitar playing and passionate vocal have attracted audiences of all ages.

HENRY MANETTA & BEIGE S.A.

Direct from Melbourne for 2 performances only, Henry Manetta's outstanding vocals combine with the fabulous instrumentation & electronica of Beige S.A., resulting in a unique musical experience.

BERNADETTE CONLON

Bernadette began accordion lessons at the age of 9, by the time she was 15, Bernadette was the Australian National Champion and Open Age Champion of both the Australian Accordion Teachers' Association and the Accordion Society of Australia. She has since competed in many other competitions and has the unique distinction of having won well over 100 first placings.

ADAM HILLS

Adam Hills is one of Australia's most talented and widely respected comedians. After hosting his own radio show in Adelaide, Adam's reputation has gone from strength to strength with his stand-up comedy routines, both in Australia and internationally. His versatility and reputation precedes him as his talents are sought in many fields, not only as a comedian, MC and performer but as a writer on countless television shows.

BANTABA BINDE

Pulsating West African rhythms! King Marong and Mbackeh Darboe from The Gambia, join local percussionist Phil Jones, to form Adelaide's exciting new band Bantaba Binde ("The Meeting Place" in Mandinka Language)

TROTTER & BURCHELL

Enjoy the original sounds of this talented semi acoustic, folk influenced band.

SHOWCASE CABARETS

Friday 28 April Features professional comedians David Roche (MC), Philip Patston, Liz Navratil and Alan Shain.

Additional entertainment provided by the witty and talented Loose Kangaroos (poetry), Music and Dance from the Nepali (India) troupe and award winning piano accordionist Bernadette Conlon. To finish the night off in style, music by Mudmen.

Saturday 29 April Features professional comedians Philip Patston (MC), David Roche and Alan Shain. The combined talents of Jann Rutherford (pianist) and Janelle Colquhoun (vocalist) as Jazopra. Add to this star studded line-up, Bernadette Conlon, piano accordionist extraordinaire and dance to the music of Henry Manetta and Beige SA.

Thursday 4 May Noarlunga Community Arts Centre hosts its own Showcase Cabaret, incorporating the talents of MC Peter Vance, international comedians, Alan Shain and David Roche, finishing off the night with the fabulous Chris Finnen Blues Band.

Saturday 6 May Features professional comedians Adam Hills (MC), David Roche, Comrade Sparky and dance by Weave Movement Theatre.

Great music by Sympathy Orchestra and 360 degrees with Chris Finnen.

JAZOPERA

Presented by: Salubrious Productions and Jann Rutherford

"From Sinatra to Sutherland" featuring Janelle Colquhoun & pianist, Jan Rutherford. Ranging from jazz to opera with the eclectic combination of well renowned and exceptional pianist - Jann Rutherford and the voice, style and touch of comedy of Janelle Colquhoun.

CROSSROADS WESTERN AUSTRALIA

Christian Fellowship, Recreation and Respite for elderly people and younger people with disabilities.

This enthusiastic leisure time singing group will entertain you with their wonderful repertoire of songs including musical and religious themes.

POETRY/ NARRATIVE

BRIEF NARRATIVE & POETRY BLACKBOARD SESSIONS

An opportunity presents itself to all aspiring narrators and poets to showcase their talents in this blackboard session. All are welcome to impart their talents in a friendly, non-threatening, laid back atmosphere. These sessions will feature the talents of special guests, Sandra-Leigh Montford (New Zealand), and Karyn White (Queensland). First on the blackboard, First Up!

LOOSE KANGAROOS

This performance of poetry celebrates 4 poets' disabilities and seeks to remove the stigma and discrimination against sufferers of mental illness. The name of the performance comes from a poem by Sandy Jeffs. "A Thesaurus of Madness", which collects colloquial definitions of madness '... being as I am, mad that is, I must be... as silly as a wheel, off my trolley, as mad as a two-bob watch, a shingle short and I have a kangaroo loose in the top paddock'.

Many thanks to the Ian Potter Foundation & Rotary, Victoria.

Friday 28, Saturday 29 April & Saturday 6 May

Time: 9pm

Venue: Banquet Room,
Adelaide Festival Centre
Cost: \$15, \$10 conc.

Time: 8.30pm

Venue: Banquet Room,
Adelaide Festival Centre
Cost: \$15, \$10 conc.

Time: 7.30pm

Venue: Noarlunga
Community Arts Centre,
22 Gawler St. Port Noarlunga
Cost: \$12, \$8 conc.
Bookings 8326 5577

Time: 8.30pm

Venue: Banquet Room,
Adelaide Festival Centre
Cost: \$15, \$10 conc.

Wednesday 3 & Thursday 4 May

Time/s: Wed 7.30pm, Thurs 7pm

Duration: 1 hour
Venue: Lyric Room,
Adelaide Festival Centre
Cost: \$12, Conc. \$8
Bookings BASS 131 246

Wednesday 3 & Thursday 4 May

Time/s: Various
Duration: Approx. 20 mins
Venue: Foyer of Banquet Room
Adelaide Festival Centre
Cost: FREE

**Friday 28 April
& Saturday 6 May**

Time/s: Fri. 5pm, Sat. 4pm
Duration: 1 1/4 hours
Venue: Lyric Room,
Adelaide Festival Centre
Cost: FREE

Friday 28 to Sunday 30 April

Time/s: Fri 28, 7.15pm.
Sat 29, 5pm; Sun 30, 6pm
Venue: Lyric & Banquet Rooms,
Adelaide Festival Centre
Cost: \$5, conc. \$3.50
Bookings: BASS 131 246

PHYSICALLY CHALLENGED & LOVING IT

Presented by: Sandra-Leigh Montford

Through this wonderful performance poet, we will gain an insight as to what it's like living with disability. After writing a handful of poems at the direction of her teacher at the age of 10, Sandra-Leigh made an independent decision to be a poet. In 1991, Sandra-Leigh was introduced to Performance Poetry where her talents were well received. Her repertoire increased as she began writing short stories based on true-life experiences.

Sandra-Leigh will also be a guest artist at the Brief Narrative & Poetry Blackboard on Friday 28th April.

MALADY

Presented by: The White Project

A one-woman show by Karyn White. This text based monologue uses Tennessee William's character 'Violet Venble' to explore a deconstruction of obsession, denial and grief.

Karyn will also be a featured guest of the Brief Narrative & Poetry Blackboard on Saturday 6th May.

READINGS FROM SLOW DANCE

Presented by: Author, Bonnie Sherr Klein

Canadian documentary film maker, Bonnie Sherr Klein (Not a Love Story: A Film about Pornography), survived a catastrophic brain stem stroke in mid-life and lived to write a best selling and inspiring memoir about it. Bonnie is artistic advisor to Kickstart!, a celebration of disability art and culture to be held in Vancouver in August 2001.

CREATIVE PARLANCE - BOOK LAUNCH

A collection of writing by Australians with cerebral palsy, published by Arts 'R' Access in conjunction with Cornford Press and edited by Tim Thorne.

It features poetry and prose, fiction and non-fiction by writers from Queensland, New South Wales and Tasmania.

To be launched by Val Sheill, National Chairperson of DADAA.

Wednesday 3 May

Time/s: 4pm

Duration: 1 hour

Venue: Lyric Room,
Adelaide Festival Centre

Cost: \$5

Bookings: BASS 131 246

Wednesday 3 May

Time/s: 5.30pm

Duration: 20 minutes

Venue: Lyric Room,
Adelaide Festival Centre

Cost: FREE

Wednesday 3

& Saturday 6 May

Time/s: Wed. 2.30pm, Sat. 2.30pm

Duration: 1 hour

Venue: Lyric Room,
Adelaide Festival Centre

Cost: FREE

Friday 5 May

Time/s: 11.30am

Venue: Lyric Room,
Adelaide Festival Centre

Cost: FREE

THEATRE/DANCE

THE ELBOW ROOM (RIDES AGAIN)

Presented by: Autism Association of South Australia

An insanely sane play written especially for the AAA drama group by American playwright James J. Brunelle and Glenda Needs.

"The Elbow Room" is a play about conformity. It is a play about stepping off. It is a play about challenges to our thinking modes. It is about obsession. It's about fixing people. About trading one religion for another, about escaping only to lock oneself into another prison. It's about boxes. It's about selling one's soul to the mass mentality. Why? And then again, Why, not?

Special performance Saturday 6 May at 7.30pm at Middleton Community Hall. All tickets \$10 including supper. Telephone 8552 2878.

Friday 28 April

& Friday 5 May

Time/s: Friday 28 April,
4.30pm, Friday 5th May 7pm

Duration: 2 hours

Venue: Lyric & Banquet Room,
Adelaide Festival Centre

Cost: Adults \$15, Members
of Autism Assoc & conc. \$12,
Children U'15 \$8

Bookings: BASS 131 246

THIS IS A WAR ZONE, BABY - IMPROVISE!

Presented by: Aviva Sheb'a with Hung Phan and No See Dolby

The history of the Vietnam War explodes myths about the entertainers. Approximately 3000 Australians performed for the US troops, often under dangerous, traumatic conditions. Aviva tells, often hilariously, of her experiences as a seventeen year old Flamenco and Jazz dancer throughout South Vietnam. Unforgettable! Meet the performers after the show for a chat.

Saturday 29 April

Time/s: 6.30pm

Duration: 1 hour

Venue: Banquet Room,
Adelaide Festival Centre

Cost: \$10, Concession \$8

Bookings: BASS 131 246



AVIVA SHEB'A

What **DO** you *do*
when you're caught in a
love triangle
when the other woman
is not only your
ex-wife
but **DEAD** into the
bargain?

THINGS THAT GO BUMP IN THE NIGHT

Presented by: Last Embrace Theatre Co.

This production in the form of Reader or Chamber Theatre, incorporates a collection of famous short ghost stories. Blending satire with The Canterville Ghost by Oscar Wilde and utilising the classics of The Open Window by Saki and The Monkey's Paw by W.W. Jacobs, this production takes advantage of Voice, Costume, Sound and Light to manipulate the audience into an extraordinary, mind blowing experience.

NOEL COWARD'S BLITHE SPIRIT

Directed by Rosalba Clemente

Presented by: State Theatre South Australia and the Adelaide Festival Centre.

Amanda Muggleton, Deborah Kennedy and Kerry Walker star in Coward's most frequently revived comedy which enthralled audiences during the worst of the wartime blitz. What do you do when you're caught in a love triangle when the other woman is not only your ex-wife but dead into the bargain? Well, for a start you can be sure that you're living wife is not going to be too happy. Enter Madame Arcati, the fleet-of-foot crystal ball gazer with questionable mystic powers. Combine all of this with a maid who seems better trained for the armed forces than domestic duties and you have the recipe for unmitigated hilarity.

STORIES FROM THE INTERIOR - SHEDDING (Auslan signing)

Presented by: Susie Fraser

A woman reflects a decade of child rearing - lost years/abundant years ... in this personal and intimate family life being a carer and keeping one's sanity. An instant classic in the "rave new world of identity politics" Real Time.

IN YOUR WILDEST DREAMS

Presented by: No Strings Attached - Theatre of Disability

A trumpet cries over the sails, fish inhabit your hubcaps, mermaids sing in your belly. No Strings Attached undresses sexuality and disability through a work in progress theatre experience.

Co-funded by Australia Council, Arts & Health Promotion, and the South Australian Community Benefit Fund.

THE DAYS ALLOTTED TO ME

Presented by: Restless Dance Company (S.A.)

Co-directed by James Winter & Ingrid Voorendt

Music composed by Stuart Day and designed by Gaelle Mellis

Is it Fate? Is it all in the genes? Is life mapped in the palm of your hand? A generation of sorrows is reconciled in a journey towards acknowledgment, acceptance and choice. Devised and performed by eighteen amazing young people with and without a disability.

Restless Dance Company thanks the following organisations for their generous support: the Dance Fund of the Australia Council (the Federal Government's Arts funding and advisory body), The South Australian Government through the South Australian Youth Arts Board (Intellectual Disability Services Council).

Saturday 29, Sunday 30 April and Thursday 4 May

Time/s: Sat. matinee 12noon Sun. matinee 4pm & 8.30pm Thurs. 6pm
Duration: 1 hour

Venue: Banquet Room, Adelaide Festival Centre
Cost: Adults \$8, Conc. \$4 & children under 6 FREE
Bookings: BASS 131 246

Monday 1, Thursday 4 & Saturday 6 May

Time/s: Mon. 6.30pm (Vision Impaired Performance, briefing at 5.30pm, meet in foyer)
Thurs. 8pm, Sat. 2pm (Special access seating, for physically disabled patrons, 2 week notification required)
(Auslan Signing)

Venue: Optima Playhouse, Adelaide Festival Centre
Cost: \$38, limited tickets at \$10
Book: 8216 8793

Tuesday 2 - Friday 5 May

Time: Tues., Wed. & Fri. 8.15pm Thurs. 11am
Duration: 1 hour
Venue: Lion Theatre (Cnr Morphett St & North Tce)
Cost: \$15, Concession \$10
Bookings: BASS 131 246

Saturday 6 & Sunday 7 May

Time/s: Sat. & Sun. 8pm & Sun. matinee 2pm
Venue: Nexus Cabaret - Lion Arts Complex (Cnr North Tce & Morphett St)
Cost: Adults \$10, Concession \$8
Bookings: Tickets at the door or BASS 131 246

Wednesday 3 - Saturday 6 May

Time: Evenings 8pm, Thurs & Fri. matinees 11am
Duration: 1 hour
Venue: Space Theatre, Adelaide Festival Centre (wheelchair accessible)
Cost: \$15, \$10 conc. \$5 group bookings-evenings \$15/person for groups booking directly through Restless Dance
daytime performances telephone 8212 8495
Bookings: BASS 131 246



LINK

Presented by: Isthmus

Prior to the performances of *"the days allotted to me"* arrive at 7.30pm for evening or 10.30am for matinee performances of *"Link"* by Isthmus in the foyer of the Space Theatre.

"Link" is an exploration of the human endeavour to reveal as much as they conceal. Five women explore aspects of emergence, connection, flight and freedom as they move through space from the ground to the air and places in between.

Artistic Director: Scot Wright (Erth) **Performers:** Yvette Forster, Kate Starr, Carol Somerville, Cat Stewart & Neridah Wyatt-Sprat

QUEEN OF THE GIRLS

(patrons must be 18 years and over - strong language & some nudity)

Presented by: Julia Traban (U.S.A.)

Julia's poignant one-woman show explores all facets of life, particularly her sexual discovery and preference. Her performance is heavily influenced by the auto accident she endured at age 11 and the resulting injuries. Themes explored include: hospitalization, sexual abuse, life after death and true love.

Wednesday 3, Thursday 4 & Saturday 5 May

Time/s: Wed. 8.45pm,
Thurs. 8.30pm & Sat. 10.15pm
Duration: 45 minutes
Venue: Lyric Room, Adelaide Festival Centre
Cost: \$10, Concession \$8
Bookings: BASS 131 246

WORKSHOPS

MILLENNIUM DREAMS

Presented by: Ruth Bieber, Director of Inside Out Integrated Theatre (Calgary, Alberta Canada)

Ruth Bieber, Company Director, presents a videotaped version of the Inside Out Performance - Spring 2000. The performance captures 'disability past, present and future' as it relates to the personal experience of the participants with Inside Out Theatre. The past represents haunting reminders of whence we came. The present is a mixture of the success and pitfall of institutionalization and community inclusion. The future hints at total community assimilation and acceptance.

Wednesday 3 to Friday 5

Time: Wed 2.30pm, Thurs 9.30am and Fri 11am
Duration: 2 hours
Venue: Lyric and Banquet Room, Adelaide Festival Centre
Cost: \$10, Concession \$8
Bookings: BASS 131 246
(Limit to 30)

WEAVE - OPEN WORKSHOP

Presented by: No Strings Attached

Keep your day open to drop in for a collection of presentations and short performances arising from Icon workshops by No Strings Attached, Strathmont Centre, CAS, Local Mental Health Services, Danoi and St Patrick's Special School. Hosted by No Strings Attached and The Park Arts and Functions Complex. This event also includes No Strings Attached open theatre workshop facilitated by co-directors of *"In your Wildest Dreams"*

After performances, there will be a lunch break (please BYO) then continuing with an Open Workshop which concludes at 3pm (this is optional).

This event is sponsored by Australia Council, Arts SA, Health Promotion through the Arts, Community Benefits SA, City of Port Adelaide Enfield.

Thursday 4 & Friday 5 May

Time/s: 10.30am to 12.30pm for Performances
Venue: The Parks Arts and Functions Complex (Cnr Cowen & Trafford St., Angle Park)
Cost: FREE for performances - Gold coin donation for Open Workshop
Enquiries: Phone: (08) 8221 6606

CREATING AN INTEGRATED VISUAL AND PERFORMING ARTS CENTRE

Presented by: Jeanne Cabot - founder and Executive/Artistic Director, Interact Centre for the Visual and Performing Arts (Minneapolis, U.S.A.)

This workshop traces the creation of Interact Centre for the Visual and Performing Arts. An informative workshop that details what is required to create an arts centre for artists with a wide variety of disability labels.

Issues addressed are: artistic quality and experimentation; promotion; inclusion into the art community; staffing; working with governments and arts boards to gain funding.

Friday 28 April, Wednesday 3 & Saturday 6 May

Time/s: Fri 28th 2.30pm, Wed 3rd 12.30pm, Sat 6th 10am
Duration: 1 1/2 hours
Venue: Banquet & Lyric Room, Adelaide Festival Centre
Cost: \$10, \$8 conc.
Bookings: BASS 131 246



THE DAYS ALLOTTED TO ME

INTERACTIVE WORKSHOP

Presented by: Jeanne Calvit - founder and Executive/Artistic Director, Interact Centre for the Visual and Performing Arts (Minneapolis, U.S.A.)

An interactive workshop that will take you through the process of creating original plays with actors, with and without disabilities. Jeanne Calvit will address the process of brainstorming, writing a scenario, improvisation, rehearsal and performance. This workshop will result in performance.

**Thursday 4, Friday 5
& Sunday 7 May**

Time/s: Thurs 11.30am,
Fri 1.30pm & Sun 9.30am
Duration: 3 1/2 hours
Venue: Banquet & Lyric Room,
Adelaide Festival Centre
Cost: \$15, \$12 conc.
Bookings: BASS 131 246

SPECIAL LIFESKILLS WORKSHOP

The See Saw project's Lifeskills Group involves people with a vision impairment and/or an intellectual disability. This group's final celebration and workshop is part of High Beam 2000 Festival. The World Dance Centre venue is accessible for wheelchair users. There is limited parking at the side of the building.

See Saw is a project of Arts in Action. Arts in Action thank the following organisations for their generous support: the Community Cultural Development Fund of the Australia Council (the Federal Government's Arts funding and advisory body); the South Australia Government through Arts SA and Health Promotions SA & Festivals Australia.

Monday 1 May

Time/s: 11am
Duration: 1 1/2 hours
Venue: The World Dance Centre
(240 Franklin St Adelaide)
Cost: FREE
Bookings: Phone Sally Chance
8212 8495

COMEDY WORKSHOP

Presented by: Philip Patston

Unleash your comic potential! If you thought comedy was just for stand-ups, think again. Award winning New Zealand comedian Philip Patston insists on sitting down every time, and in this dynamic, interactive workshop he'll get you in touch with what makes you the funniest person you'll ever know.

Warning: the experience may change you !!!

Thursday 4 May

Time/s: 1pm
Duration: 2 1/2 hours
Venue: Lyric Room,
Adelaide Festival Centre
Cost: \$10, Concession \$8
Bookings: BASS 131 246

MENTAL HEALTH & THE ARTS - WHERE TO FROM HERE?

Invited guests will talk about opportunities in the Arts for people who have experiences of mental illness. This forum will also provide an opportunity to express your ideas and comments in relation to what's available and the resources you would like to see developed in the future.

Entertainment by Richard Siebec and bar facilities available.

FREE - Fine Lines CD launch will follow on from this discussion, at the Nexus Cabaret Space.

Friday 5 May

Time/s: 5.30pm
Duration: 2 hours
Venue: Lion Bar
(Cnr Morphett St & North Tce)
Cost: FREE

VOCAL DANCE

Presented by: Aviva Sheb'a

Aviva's work invariably leads to laughter. Experience the benefits of Vocal Dance for people of various abilities. It blends vocal and dance techniques with Aviva's own discoveries. A celebration of our abilities to move, create, express, sound out. No prior experience necessary. Bring inhibitions if necessary!

Sunday 7 May

Time/s: 2.30pm
Duration: 1 hour
Venue: Banquet Room,
Adelaide Festival Centre
Cost: All tickets \$5
Bookings: BASS 131 246

A POETRY WORKSHOP FOR ASPIRING WRITERS OF DIVERSE ABILITIES

Presented by: Poets of Loose Kangaroos

Inspiration or hard work? Exercises to get the pen flowing, survival strategies for poets in the writing game, survey of markets and getting published with a special emphasis on co-operative publishing. Everything you need to know about being a poet in Australia.

Sunday 30 April

Time/s: 10am
Duration: 1 hour
Venue: Banquet Room,
Adelaide Festival Centre
Cost: \$5, Concession \$3.50
Bookings: BASS 131 246

GETTING PAST FEAR

Presented by: Julia Traban

This workshop combines movement skills, writing techniques and breathing awareness to help women get past fear and self-doubt to find the roots of their awareness, (which are essentially personal in Julia's view). With the political awareness, (which are essentially personal in Julia's view). With the idea that the body is the encyclopedia that holds our histories, stories and thoughts, how can we explore our own wealth of information if we do not open the book and turn the pages? Wear comfortable, easy to move clothing and bring along an adventurous attitude.

Friday 5 May

Time/s: 5pm
Duration: 3 hours
Venue: Banquet Room,
Adelaide Festival Centre
Cost: \$10, Concession \$8
Bookings: BASS 131 246

CLAY MAKING FOR BEGINNERS

Presented by: Studio KAOS

This workshop presents an introduction to clay making technique. Participants will pinch and coil pots. A creative and practical art piece to store all your odds and ends.

Students need to bring: Art smock or clothes you're not afraid to get dirty.

*Friday 28 April
& Wednesday 3 May*

Age: All Ages
Time/s: Fri. 2.30pm
& Wed. 12.30pm
Duration: 1 hour
Venue: Banquet Room,
Adelaide Festival Centre
Cost: \$15
Bookings essential: Phone
Maria (08) 8384 2272 or book
at BASS 131 246

PAINTING & DRAWING BONANZA (FOR 8 YEARS+)

Presented by: Studio KAOS

An enjoyable and dynamic workshop where students can draw and paint. This workshop involves fun games to loosen up the imagination and let creativity run riot. Squiggle art and fireworks art will introduce students to the drawing and painting mediums in a non-threatening and amusing way.

Students need to bring: pencil, black felt tip pen and rubber. Art smock or clothes you're not afraid of getting paint on.

*Saturday 29 April &
Friday 5 May*

Time/s: Sat. 29, 10am
& Fri. 5, 9.30am
Duration: 1 hour
Venue: Banquet Room,
Adelaide Festival Centre
Cost: \$15.00
Bookings: Phone Maria
(08) 8384 2272 or book
at BASS 131 246

CARTOONING FOR BEGINNERS (FOR 8 YEARS+)

Presented by: Studio KAOS

A fun workshop which looks at the techniques and tricks behind character cartooning. Discover the creative process behind face/body construction, expression, emotion and movement. All cartoons are broken down into easy steps for students to follow.

Students need to bring: pencil, sharpener and rubber.

Thursday 4 May

Time/s: 10am
Duration: 1 hour
Venue: Banquet Room,
Adelaide Festival Centre
Cost: \$12.00
Bookings: Phone Maria
(08) 8384 2272 or book
at BASS 131 246

CARTOONING COSMIC CAPERS (FOR 8 YEARS+)

Presented by: Studio KAOS

A zany cartooning class where aliens, dragons, mad cows, animals, monsters and an assortment of weird characters come to play. Learn the cartooning techniques that make them come alive on YOUR page. Cartoons are broken down into step by step procedures for all students to follow.

Students need to bring: pencil, sharpener and rubber.

Saturday 6 May

Time/s: 10am
Duration: 1 hour
Venue: Banquet Room,
Adelaide Festival Centre
Cost: \$12.00
Bookings: Phone Maria
(08) 8384 2272 or book
at BASS 131 246

VISUAL ART EXHIBITIONS

"TACTICS"

Presented by the High Beam Festival

"Tactics" ... mode of procedure for gaining advantage or success" and in today's world the advantage is in 'difference'. High Beam is proud to exhibit the work of an eclectic group of artists. Katie Esser, Julie Greenwood, Brigitte Jones, Karen Lacey, Jamahl Pollard, Elizabeth Renner and Jean Winter present recent work in response to the Festival and its celebration of very special art.

**Sunday 2 April -
Sunday 30 April**

Time/s: 10.15am - 8.30pm Tues.
10.15am - 6.00pm Wed. - Fri.
9.00am - 12.00pm Sat.
2.00pm - 5.00pm Sun.
Closed public holidays
Venue: Prospect Gallery,
1 Thomas St, Nailsworth
Cost: FREE

"JULIA FARR ART 2000"

Presented by Julia Farr Services

Paintings, drawings, mosaic work, ceramics, puppets, 3-dimensional constructions and papier-maché produced by over 30 regular participants of the visual arts program. Julia Farr Services provides accommodation support and care for adults who experience disability as a result of acquired brain injury, or physical or neurological conditions.

**Thursday 13 April -
Sunday 7 May**

Time/s: 9.30am - 4.30pm
Monday - Friday
(Closed public holidays)
Venue: Hughes Gallery,
Fullarton Park Centre,
411 Fullarton Rd, Fullarton
Cost: FREE

"SUNEDEN ARTISTS PRESENT"

Presented by Suneden Special School

An amazing and expansive exhibition of paintings by students with enormous enthusiasm to paint and to create. The work is reflective of the spirit of the Suneden student community. The subject matter of each student's paintings is derived from a program that they themselves select. Using the freedom to express in full vivid colour, their results are electrifying.

**Monday 17 April -
Friday 5 May**

Time/s: 9.00am - 5.00pm
Mon.-Fri. (Closed public holidays)
Venue: Centre Gallery, Education
Centre, 31 Flinders St, Adelaide
Cost: FREE

"VISUAL AND TACTILE"

Presented by Kensington Centre & Townsend School

Selected works representative of the art of students with special needs, intellectual or physical disabilities and vision impairment.

**Monday 17 April -
Friday 5 May**

Time/s: 9.00am - 5.00pm
Mon. - Fri. (Closed public holidays)
Venue: Foyer, Education Centre,
31 Flinders St, Adelaide
Cost: FREE

"FOCUS ON THE PERSON"

Presented by Axis Gallery, The Parks Arts and Functions Complex

Local artists come together to present a mixed media exhibition which focuses on the person and not the disability. Most of the artists have previously exhibited at the Axis Gallery. Also on show will be works in progress from the 'Torch' project by clients of Community Access Services.

**Thursday 20 April -
Monday 29 May**

Time/s: 9.00am - 5.00pm
Mon. - Fri. (Closed public holidays)
Venue: Axis Gallery, The Parks
Arts and Functions Complex,
2-46 Cowan St, Angle Park
Cost: FREE

"RISE ABOVE, BE PROUD, BREAK THROUGH"

Presented by Karrarendi Adults Group & Tauondi College

Karrarendi and Tauondi come together to present an exhibition of paintings, sculpture, video images and documentary photography and film. The work explores notions of disability, and institutionalisation from an aboriginal viewpoint.

**Friday 28 April -
Sunday 21 May**

Time/s: 10.00am - 5.00pm
Mon. - Sun.
(Closed public holidays)
Venue: Tandanya, Cur Grenfell
Street and East Terrace, Adelaide
Cost: General admission
fee applies.



Presented by Community Bridging Services

An exhibition of work by artists with a disability through workshops facilitated by artists John Foubister and Bronwyn Platten. Creative activities for people with a disability not only promote self-expression but they also enable a dialogue to be established with other people about issues of central importance such as identity, vision and personal meaning.

Presented by The High Beam Festival

As part of its artist showcase, High Beam presents the celebratory and inspirational works of Sophia Borick, Tony Gilmore-Johnstone, Richard Maurovic, Frances O'Neil and Christine Pymon. "Home Site" is an eclectic mix of photography, jewellery and painting which together celebrate nature, life, the human spirit, and its capacity to triumph.

Presented by TASI

Presented by Cornwall Arts Council

The title "IMPRINT" arises from the observation of the works produced that each participant's work has an artistic thumb print, imprint, signature, hand-mark, styles, trademark and symbol. The exhibition is a selection from a larger collection of works produced by artists with intellectual and physical disabilities and curated by Phillipa Julien and Mish Meijers. 'Imprint' is presented with the assistance of High Beam.

Presented by High Beam 2000 Festival

Presented by High Beam 2000 Festival

Bold and colourful paintings by Jonathan Lyons. Also on exhibition is Jonathan's collaborative work with his father, potter Robert Lyons. Meditative and minimal paintings by George Schwerdt. George's interest in the drawn line and mark-making is evident in this new abstract work.

Presented by The High Beam Festival

Presented by The High Beam Festival

High Beam is proud to present the work of exciting Canberra artist, Lucile Carson. Lucile's concerns are aimed at opening up the discourses for contemporary artists experiencing the difficult reality that disability imposes on their creative practice. "Scratching the Surfaces" is a interdisciplinary exploration of the texture and shape of urban and rural landscapes.

Presented by DADAA (ACT)

Presented by DADAA (ACT)

An exhibition of artwork created by people with and without a disability which celebrates the remarkable, unique and diverse range of Canberra offerings. The exhibition challenges and puts to rest the myth that Canberra is a cold place with no soul and that it is a place inhabited solely by politicians.

Presented by DADAA (WA)

Presented by DADAA (WA)

"Figure 8" is one of DADAA (WA) Inc.'s latest projects which celebrates the increasing visibility, integration and movement of artists experiencing disabilities in our community. Often the greatest issue facing any artist, and especially those experiencing disability, is isolation. Isolation in all its forms: social, educational and emotional. In "Figure 8" we see lone figures, mirroring one another from canvas to canvas, sometimes defeated, in others joyous, reflective and open.

Friday 28 April -

Saturday 13 May

Time: 10.00am - 5.00pm
Mon. - Fri. 1.00pm - 5.00pm Sat.
Venue: Artspace, Playhouse
Building, Adelaide Festival Centre
Cost: FREE

Friday 28 April -

Saturday 13 May

Time: 10.00am - 5.00pm
Mon. - Sat.
Venue: Festival Theatre Foyer,
Adelaide Festival Centre,
Cost: FREE

Friday 28 April -

Sunday 14 May

Time/s: 10.00am - 4.00pm
Wed. - Sat. 1.00pm - 4.00pm Sun.
Venue: The Red House,
245 Sturt Road, Sturt
Cost: FREE

Wednesday 26 April -

Sunday 7 May

Time/s: 12pm - 4pm Wed. - Fri.
2pm - 5pm Sat. & Sun.
Venue: Pepper Street Gallery, Cnr
Magill Rd and Pepper St, Magill
Cost: FREE

Friday 28 April -

Sunday 7 May

Time/s: 9am - 5pm Mon. - Fri.
2pm - 5pm Sat. & Sun.
Venue: Yungondi Building,
Atrium, City West Campus,
University of SA
Cost: FREE

Friday 28 April -

Sunday 7 May

Time/s: 11am - 5pm Mon. - Fri.
2pm - 5pm Sat. & Sun.
Venue: Shop@rt, Site 134
Hindley St, Adelaide
Cost: FREE

Friday 28 April -

Sunday 7 May

Time/s: 11am - 5pm Mon. - Fri.
2pm - 5pm Sat. & Sun.
Venue: Shop@rt,
Site 134 Hindley St, Adelaide
Cost: FREE



LUCILE CARSON

"SHOPFRONT ART"

Presented by Wendy Tapper & Colleen Scott (NSW)

Friday 28 April -

Sunday 7 May

Time/s: Continuous display

Venue: Various Shop@rt sites
in Hindley Street

"ARTIST OF THE MONTH"

Presented by Country Arts SA

Country Arts SA is proud to present the work of George Vrastaminos as part of the Artist of the Month program. The program encourages country artists in the promotion of their art and provides a metropolitan venue for the exhibition of their work.

Monday 1 May -

Sunday 28 May

Time/s: 9am - 5pm Mon. - Fri.

1pm - 4pm Sat. & Sun.

(Closed public holidays)

Venue: Foyer Gallery, Country
Arts SA, 1 McLaren Parade,
Port Adelaide

Cost: FREE

"TORCH LIGHT"

Presented by Noarlunga Community Arts Centre

An exhibition of works in progress from the 'Torch' Project. Also on show are works by SA artists. Painter Arthur James Dean and sculptor Brigitte Jones present their latest work in celebration of High Beam.

Wednesday 3 May -

Sunday 28 May

Time/s: 10am - 4pm (except

Tuesdays) 12noon - 4pm Sat.

& Sun. (Closed public holidays)

Venue: Noarlunga Community
Arts Centre, 22 Gawler St,
Port Noarlunga

Cost: FREE

"IMPRESSIONS IN SAND"

Presented by Community Access Services - Port Adelaide

The exhibition is a celebration of the work of CASPA artists. The artworks are inspired by the experience of the sense of touch. The works were created by the process of plaster-casting objects from impressions using sand. The results are a stunning visual display of artwork depicting a variety of themes and concerns.

Friday 5 May -

Sunday 28 May

Time/s: 9.30am - 5pm Mon. - Fri.

2pm - 4pm Sat. & Sun.

(Closed public holidays)

Venue: Port Community Arts
Centre, Black Diamond Centre,
66 Commercial Rd, Port Adelaide

Cost: FREE



Take a deep breath and enjoy the shows.

we're smoke-free



Government
of South Australia

An initiative of the State Government of South Australia, supporting smoke-free sports, arts and recreation environments.

NICAN 2000 Conference

"Inside Out -
Discovering creativity
through Community
Recreation"

The National Recreation
and Disability Conference
with a focus in 2000 on
Art and Sport. Individual
sessions and theatrical
performances may be
booked through NICAN on
Freecall/TTY 1800 806 769.

NICAN/High Beam Cabaret Dinner

Featuring performances by International and Australian
artists in a cabaret style evening of comedy, music, dance
and merriment. A fantastic opportunity to experience the
brilliance of some of the artists performing at the High Beam
2000 Festival. It will be a night of high quality entertainment
and excellent dining.

Monday 1 May,
The Banquet Room, The Adelaide Festival Centre
7.00pm to 11.00pm

Cost: \$50 per head, concession \$35

Dress: This is not black tie and tiara!!!

Bookings: Payment through NICAN

Telephone: Freecall/TTY 1800 806 769

ADELAIDE
 ADELAIDE HILLS
 BAROSSA
 MURRAY RIVER
 FLEURIEU PENINSULA
 SOUTH EAST
 KANGAROO ISLAND
 CLARE COUNTRY
 EYRE PENINSULA
 YORKE PENINSULA
 FLINDERS RANGES & OUTBACK

We'll point you in the right direction.

For your South Australian holiday ideas and information, all you have to do is visit the staff at the South Australian Travel Centre, 18 King William Street, Adelaide or phone us on 1300 655 276.



South Australia
Relax. Indulge. Discover. Enjoy.
www.visit-southaustralia.com.au

hwplSAT1580

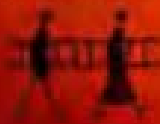
'Arts in Action' has appointed Travelaffare as the official travel agents for the forthcoming High Beam Festival, 28th April to 7th May. Please phone 08 8296 9299 direct for rates both for airfares and specially discounted accommodation. With many years of experience in travel for people with disabilities, Lynne or Barbara will be able to assist you.

Arts in Action: www.artsinaction.asn.au
High Beam Hotline: 8232 6391

Distribution by: Sawfords Advertising Distributors
 Telephone: (08) 8340 8177

Print alternative available by phoning Arts in Action on (08) 8224 0799 or picking up a cassette at the Rundle Mall information kiosk

HIGH BEAM 2000 FESTIVAL
 EVENT MANAGEMENT AND MARKETING



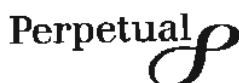
Telephone: 0402 000 471

HIGH BEAM 2000 FESTIVAL
 GRAPHIC DESIGN



Telephone: (08) 8277 4533

High Beam 2000 Festival acknowledges the funding
and support of the following organisations.



zper
780
.87
H638
b

MORTLOCK „BRAT“
OF
SOUTH AUSTRALIANA



**HIGH
BEAM**



HIGH BEAM HOTLINE: 8232 6391