

ARTS PROJECT AUSTRALIA INC.



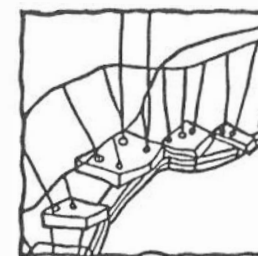
PER

Annual Report 1992

SF
361
A1



SF
361
A1



ARTS PROJECT AUSTRALIA INC.

Annual Report 1992

Contents	Page
Aims and Objectives	2
President's Report	3
Director's Report	4
Scenes from the Studio Workshop	6
Financial Reports	9
Acknowledgements and Thanks	19

Cover Image *Sir Winston Churchill* by Valerio Ciccone, 1990
Pastel on Rag Paper, 660mm x 500mm

Aims and Objectives

Arts Project Australia began in 1974 as an arts-based advocacy group for people with intellectual disabilities. A major reason for the formation of the "Art Project" (as it was then known) was the insight on the part of its members that many people who have an intellectual disability displayed aptitude and talent in the visual arts, and that the flexible conventions of these art forms could provide access to a variety of means of expression and communication, even when more common forms, particularly linguistic, were difficult for them to utilise.

Broadly, the aims of the Association are:

To provide the means by which people with an intellectual disability can participate fully in the visual arts;

To promote the work of people with an intellectual disability as integral to the broad spectrum of contemporary art practice;

To facilitate participation by people with an intellectual disability in appropriate mainstream programs and courses, and to encourage meaningful artistic exchange between disabled and non-disabled artists;

To broaden understanding and awareness of art by people with intellectual disabilities among artists and the general public;

To advocate art as a valid vocational or recreational option;

To support and provide high quality community based education and training in the visual arts;

In addition to the above points, the Studio Workshop Program specifically aims to provide educational experiences which will:

Develop the artistic skills and awareness of people with an intellectual disability so that they may more fully utilise art as a vocational or recreational option;

Focus on personal development, particularly in the areas of self confidence and self-esteem which will enhance the individual's ability to function in other aspects of their lives;

Encourage the development of personal symbols and expressions so that art may be used as an alternative means of communication.

President's Report

In presenting my Annual Report for the year ending January 31st 1993, I am happy to say that despite the economic recession, Arts Project Australia has enjoyed a successful year. The commitment and dedication of the staff has enabled us to expand despite difficulties in meeting the growing demands on our service.

I would like to offer the grateful thanks of the Management Committee to the Program Director, Cheryl Daye, and the artworkers, who have so generously given much extra time and energy in carrying out the programs we have undertaken.

The transformation of the physical space, both in the relocation of the office and in the cutting of a doorway linking the two studio areas, has greatly improved the functioning of the workshop. I would particularly like to thank Mark Chapman, Luciano Giardina and Andrew Sutton for their efforts in effecting the changes, and also Alan Davis who provided technical advice and assistance in completing the job. These two improvements have transformed the working space into a free-flowing and efficient use of the premises.

We had a number of changes of personnel. Linda Bond, the Administrative Assistant who contributed so much to the life and work of the studio, left to travel overseas and her position is in the process of being filled. Maxine Ryder also went overseas and Linda Judge has taken her place as an artworker. We regretfully accepted the resignations of Cliff Judge, Lyn Quintal and Michael Butson from the Management Committee. Cliff was a member of the original team which formed the Arts Project in 1974 and has made a very large and varied contribution both in ideas and sheer physical work to the development of the project. Lyn brought to us her knowledge and experience as an art teacher and helped inaugurate the valuable association with what was then the Art School at Phillip Institute of Technology, now R.M.I.T., and she has now joined us as an artworker. Michael Butson is going to live interstate and we wish him well. I would like to thank all of these people for their contributions to Arts Project Australia.

We welcomed Chris McAuliffe to the Committee, he is a lecturer in Fine Arts at The University of Melbourne and his knowledge and experience in the art world is of great value to us. Peter Douglas, a retired accountant has joined the Finance Committee and acts as a valuable consultant on financial affairs. We welcomed Sue Boyce, who is also vice-president of the Down Syndrome Association of Victoria onto our committee, and she has relieved Sue Sturup as Secretary.

Our major enterprise for the year was the exhibition in the Access Gallery of the National Gallery of Victoria, "Inside Out/Outside In". This was opened by Mr. James Mollison, Director of the N.G.V. and Professor Jenny Zimmer of the Fine Arts Dept. of Monash University. The seminar which accompanied it was led by our guest, Professor Roger Cardinal, from the Dept. of Visual and Literary Studies, University of Kent, U.K., who is a world authority on "Outsider Art." We are grateful to the Community Cultural Development Unit of the Australia Council for funding the very fine catalogue which was edited by Chris McAuliffe and Stephanie Holt who also curated the exhibition.

A very significant addition to our program is the negotiation with the Federal Government Dept. of Health, Housing, Local Government and Community Services to set up a Supported Employment Program for six of our artists. This is an innovation which we believe to be a unique step in the recognition of the status of artists with intellectual disabilities.

I wish to thank the following government departments who have made possible the continuing work of Arts Project Australia:- Health and Community Services Victoria; Health, Housing, Local Government and Community Services; Australia Council - CCDU; Victorian Ministry for the Arts; Sport and Recreation Victoria; Northcote City Council.

MYRA HILGENDORF O.A.M.
PRESIDENT

Director's Report

The past year been one of significant development for Arts Project Australia.

With the acquisition of increased studio and gallery space through the opening of Studio 2, we have been able to develop and expand our existing program. This expansion has occurred not only in the physical sense, but also in the range of activities which we are able to offer, and we have now moved, albeit in a modest way, into the areas of printmaking and ceramics. This extension of options reinforces our commitment to increasing the range of choices available to people with intellectual disabilities who wish to participate in the visual arts.

The advent of a larger gallery space has meant that we are now able mount major exhibitions at Arts Project Australia and to strengthen our links with the wider art community by making the space available to other artists. The back studio space has been effectively used for the introduction of ceramic and printmaking sessions, and also to house our first artist-in residence, Andrew Sutton. Through our association with Northcote Council, a community artist, Eve Glenn, also used the space for a project involving a group of young Arabic women, and which was exhibited at the National Gallery of Victoria. The gallery has also hosted the Northcote Women's Contemporary Art Show and an exhibition of work by students at Preston TAFE.

Our major exhibition for the year was held at the Access Gallery of the National Gallery of Victoria. This event was particularly significant for us, as the exhibition itself formed the basis for a larger project including the publication of a colour catalogue and the staging of seminars, both of which explored issues relating to art and intellectual disability. I would like to thank all those who contributed to this project, and who helped make it such an outstanding success. In particular I would like to thank Chris McAuliffe and Stephanie Holt, who curated the exhibition and edited the catalogue; Professor Roger Cardinal whose presence and extensive knowledge of the field of "Outsider Art" contributed a great deal to achieving the aims of the overall project; Geoff Lowe and

Roger Trowbridge who spoke at the seminar and of course the funding bodies who made the project possible, namely the Australia Council - CCDU and the Victorian Ministry for the Arts.

Just after the show at the National Gallery, we were sorry to lose the services of Linda Bond our Administrative Assistant. Linda worked for us for two and a half years and over that time she made a substantial contribution to the organisation. She left us to travel overseas, and we wish her all the best for the future.

During the past year, demand for places in the studio workshop program has continued to grow beyond our capacity to cater for it. This has placed many extra demands on the artworkers and I would like to express my deep appreciation of their efforts in continuing to provide such a high quality service under what are often quite difficult circumstances. I would also like to thank those artworkers who have so generously donated their time in carrying out tasks which fall outside the usual range of duties.

Another area of increased demand has been in the provision of resource material and in mounting displays for conferences and information days. These have included displays for the ADEC Conference, CSV Regional Information Days, and contributing paintings for projects run by other organisations such as Arts Access. We are also involved in providing training for students undertaking arts or disabilities studies at various TAFE and tertiary institutions. Although we have received recognition and publicity from these activities, they also represent an additional pressure on our limited resources. Again, I would like to thank the volunteers and artworkers who have contributed in this regard.

I am pleased to report that our programs at RMIT (Bundoora Campus), the Australian Print Workshop and Pentridge have all continued to be a great success and will continue into 1993. During 1992 a pilot program was undertaken at the Linden Art Centre for clients from the Southern region,

and I would like to thank the City of St. Kilda for their support of this project.

Our international activities were extended thanks to the efforts of Cliff Judge who took an exhibition of work from Arts Project to Latvia and mounted a reciprocal exhibition of works from Latvia here at Arts Project. Cliff's contribution over the years to the organisation and to the studio workshop is greatly valued and we were sorry to lose him from the Management Committee.

The long term commitment which Arts Project Australia has to developing greater opportunities in the visual arts for people with intellectual disabilities has been acknowledged by the Federal government through the establishment of a Supported Employment Program funded by the Department of Health, Housing and Community Services. Under this scheme, six artists who have established histories of exhibiting and selling their work through Arts Project Australia are being provided with additional support which will assist them to pursue art at a vocational level. One of these artists, Valerio Ciccone recently had five of his works purchased by the Australian Gallery of Sport as part of their permanent collection. The new Supported Employment Program is a significant breakthrough in that, in recognising people's talents and abilities, it allows them to pursue careers which may fall outside the traditional notions of employment.

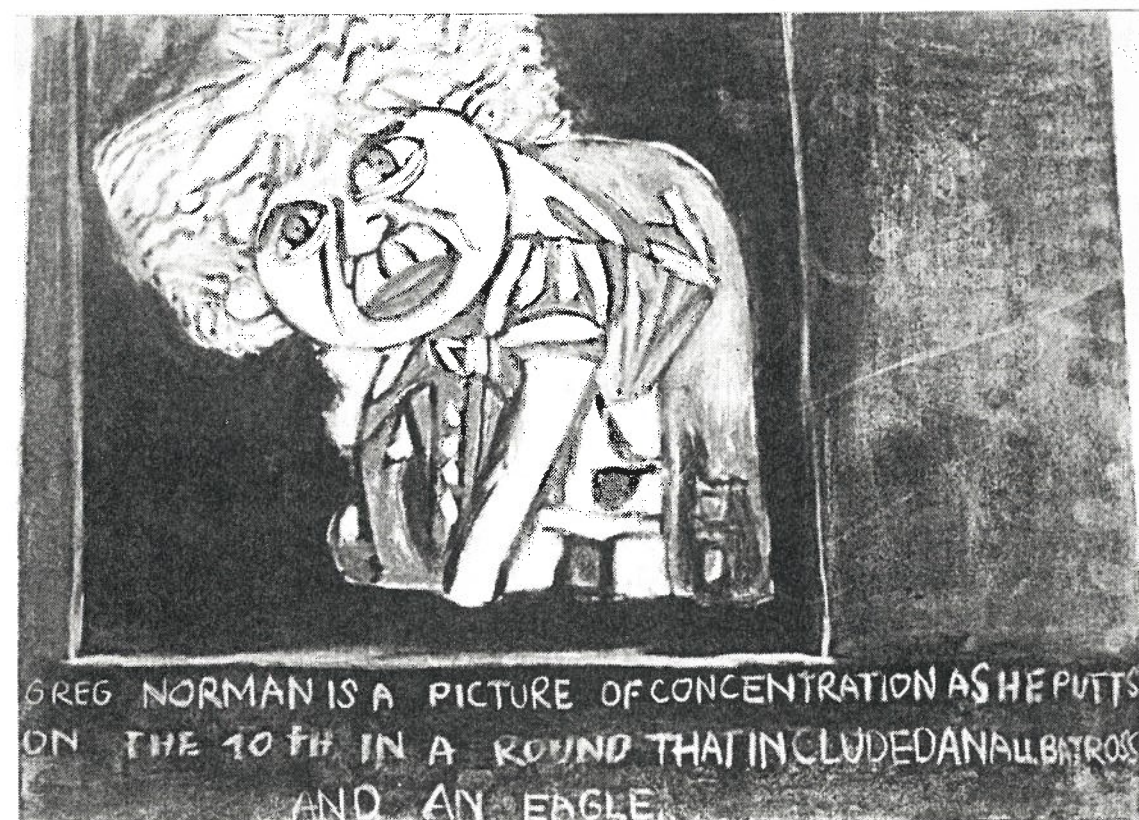
In conclusion I would like to thank all those who have supported Arts Project Australia during the year - the funding bodies, the Management Committee, members of the Association, volunteers, friends and patrons, all of whom have contributed to our successes to date. However it is the artists who use our service to whom the greatest amount of credit is due, for the organisation is only a vehicle for the development and recognition of their talents, and in the end it is their achievements which are to be valued most highly.

CHERYL DAYE
DIRECTOR

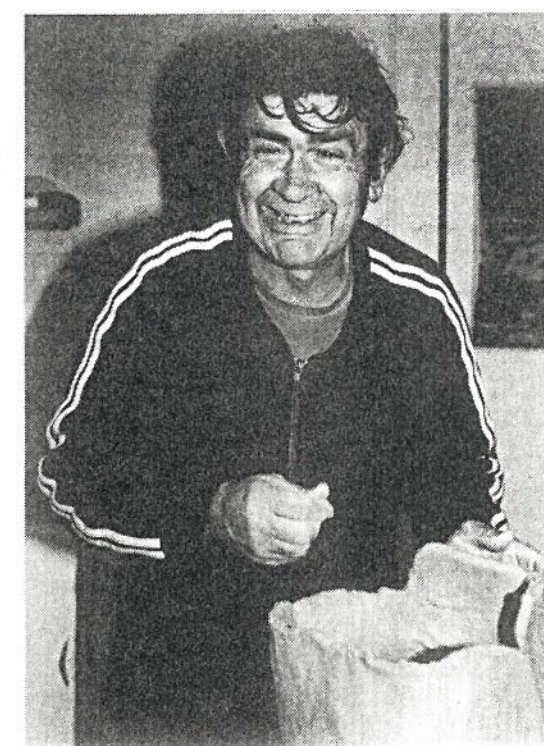


Left *Untitled*, 1992 work by Julian Martin, one of the six artists in the Supported Employment Program

Below *Greg Norman*, 1991 one of the works by Valerio Ciccone, which was purchased by the Australian Gallery of Sport



Above Scene from the Studio Workshop



Left Harold (Jimmy) Fuller enjoying the ceramics class

Financial Reports

Contents	Page
Statement of Sources of Funds	10
Statement of Application of Funds	11
Income and Expenditure Summary	
Department of Health, Housing & Community Services and Community Services Victoria	12
Australia Council - CCDU	13
Department of Sport and Recreation	13
City of Northcote	13
Victorian Ministry for the Arts	13
Balance Sheet	14
Profit and Loss Statement	15
Notes to and Forming Part of the Financial Accounts	18

ARTS PROJECT AUSTRALIA INC.

Statement of Sources of Funds
FOR THE YEAR ENDING 31ST JANUARY 1993

SOURCES OF FUNDS	\$	\$
Funds from Operations		
Operating Surplus/(Loss)	(10,979)	
Add back Increase/Decrease in Provisions:		
Depreciation	5,382	
Accrued Holiday Pay	(812)	
Creditors - Other	(725)	
Rent Liability	(643)	
NET OPERATING DEFICIT	(7,777)	
Reduction in Current Assets:		
Petty Cash - Workshop	10	
Investment A/c No. 2 # 9467	53,349	
Victorian Govt. Security Bond	971	
		54,330
Increase in Liabilities:		
Bank O/draft S/W'shop # 9470	694	
Bank O/draft No. 2 A/c # 9567	5,951	
Community Services Victoria	2,841	
		9,486
TOTAL FUNDS FROM SOURCES		<u>56,039</u>

ARTS PROJECT AUSTRALIA INC.

Statement of Application of Funds
AS AT 31ST JANUARY 1993

APPLICATION OF FUNDS	\$	\$
Increase in Current Assets:		
Investment A/c S/W'shop # 9470	18,469	
Accounts Payable	283	
		18,752
Non-Current Assets		
Office Equipment	10,265	
Art Workshop Equipment	625	
		10,890
Decrease in Current Liabilities		
Dept. of Community Services	8,913	
Victorian Ministry for the Arts	7,000	
DHH & CS Equipment	6,484	
Northcote City Council	4,000	
		26,397
TOTAL FUNDS APPLIED		<u>56,039</u>

ARTS PROJECT AUSTRALIA INC.

Income and Expenditure Summary
FOR THE YEAR ENDING 31ST JANUARY 1993

DEPARTMENT OF HEALTH, HOUSING & COMMUNITY SERVICES AND COMMUNITY SERVICES VICTORIA		
	\$	\$
Grants Received		105,211
less Expenditure: Salaries -Administration	53,200	
Wages - Artswriters	52,000	
Materials	3,500	
Superannuation	280	
Life Model Fees	1,200	
Rent	6,000	
Rates	2,000	
Electricity	2,500	
Office Expenses	500	
		121,180
	<u>Balance</u>	<u>(15,969)</u>
DHH&CS Equipment Grant		8,514
less Expenditure	10,130	
	<u>Balance</u>	<u>(1,616)</u>

ARTS PROJECT AUSTRALIA INC

Income and Expenditure Summary
FOR THE YEAR ENDING 31ST JANUARY 1993

AUSTRALIA COUNCIL - CCDU		
	\$	\$
Grants Received		15,000
less Expenditure	15,000	
	<u>Balance</u>	<u>Nil</u>

DEPARTMENT OF
SPORT AND RECREATION

Grants Received		
Ceramics and Printmaking Project		5,000
less Expenditure: Wages	2,646	
Materials	500	
		3,146
	<u>Balance</u>	<u>1,854</u>
Pentridge Project		5,000
less Expenditure: Wages	2,520	
Materials	574	
		3094
	<u>Balance</u>	<u>1,906</u>

CITY OF NORTHCOTE

Grants Received		
		4,000
less Expenditure: Rent 114 High St.	4,000	
	<u>Balance</u>	<u>Nil</u>

VICTORIAN MINISTRY FOR THE ARTS

Grants Received		
		7,000
less Expenditure: NGV Exhibition	9,451	
	<u>Balance</u>	<u>(2,451)</u>

ARTS PROJECT AUSTRALIA INC.

Balance Sheet

AS AT 31ST JANUARY 1993

CURRENT ASSETS	\$	\$
Petty Cash - Workshop	50	
Investment A/c Studio Workshop # 9470	22,976	
Investment A/c No. 2 Account # 9567	3,754	
Victorian Government Security Bonds	2,733	
Accounts Payable	515	
TOTAL CURRENT ASSETS		<u>30,028</u>
NON-CURRENT ASSETS		
Office Equipment	18,121	
Less Accumulated Depreciation	(7,057)	
Art Workshop Equipment	14,416	
Less Accumulated Depreciation	(8,779)	
TOTAL NON-CURRENT ASSETS		<u>16,701</u>
TOTAL ASSETS		<u>46,729</u>
LESS CURRENT LIABILITIES		
Creditors - Other	3,690	
Accrued Holiday Pay	2,424	
Rent Liability	1,357	
Grants Received for the Year - CSV	13,934	
Bank Overdraft - StudioW'shop A/c # 9470	1,378	
Bank Overdraft - No. 2 A/c # 9567	6,438	
TOTAL CURRENT LIABILITIES		<u>29,221</u>
TOTAL LIABILITIES		<u>29,221</u>
NET ASSETS		<u>17,508</u>
MEMBERS' FUNDS		
Opening Balance Members' Funds	28,487	
Share of Profit/(Loss)	(10,979)	
TOTAL MEMBERS' FUNDS		<u>17,508</u>

ARTS PROJECT AUSTRALIA INC.

Profit and Loss Statement

AS AT 31ST JANUARY 1993

LESS EXPENSES	\$	\$
Accounting and Audit Fees	1,522	
Association Expenses	3,148	
Depreciation	5,382	
Electricity	2,767	
Holiday Pay Leave	3,570	
Insurance	2,007	
Bank Charges	346	
Life Drawing Expenses	1,230	
Office Expenses	549	
Postage	1,125	
Stationery	1,572	
Rates - City of Northcote	1,739	
Rates - Melbourne Water	1,733	
Repairs and Maintenance	2,018	
Rent	15,713	
Superannuation	289	
Telephone	1,483	
Workcare	1,285	
Wages - Artswokers	56,570	
Wages - Administration	44,912	
Wages - Other	1,116	
Wages - Oncosts	8,425	
Wages - Pentridge Program	2,520	
Workshop Materials - Pentridge	2,110	
Workshop Materials	4,698	
Workshop - Cleaning	827	
Workshop - Program Publicity	598	
Workshop - Other Expenses	297	
TOTAL EXPENSES		<u>169,551</u>
NET PROFIT/(LOSS)		<u>(10,979)</u>

Notes to and Forming Part of the Financial Accounts for the Year Ended 31st January, 1993

1 HISTORICAL COST ACCOUNTING

The financial statements have been prepared in accordance with the Historical Cost Convention and therefore do not reflect changes in the purchasing power of money or current valuations and non-monetary assets. The accounting policies are, unless otherwise stated, consistent with these.

2 ACCRUAL ACCOUNTING

The accrual method of accounting is used whereby accruals and prepayments are recognised in the financial year to which it relates, and not when it is paid.

3 DEPRECIATION

Depreciation is calculated on a straight line basis, so as to write off the net cost of each fixed asset during its expected useful life.

4 REPAIRS AND MAINTENANCE

costs related to repairs and maintenance of the organisation's operating facilities are written off as they are incurred.

5 FIXED ASSETS

Fixed assets have been depreciated on a straight-line basis so as to write off these values progressively over their estimated useful lives. Additions during the year are depreciated on a pro-rata basis from the date of acquisition.

AUDIT STATEMENT TO THE MEMBERS OF ARTS PROJECT AUSTRALIA INC.

We have audited the accounts as set out and the supporting records of Arts Project Australia Inc. In our opinion:

- 1 The accounts are drawn up so as to give a true and fair view of the state of affairs as at 31st January, 1993;
- 2 The assets of Arts Project Australia Inc. exist and the funds have been used in accordance with the purposes and intention of the organisation.

Babbage & Co. J.E. Babbage AASA CPA
Public Accountants Principal (Dated 26th April, 1993)

Statement to the Members of Arts Project Australia Inc.

We hereby certify that the accompanying Accounts comprising an Income and Expenditure Statement and Balance Sheet and Sources and Applications of Funds Statement, together with the Notes to the Accounts have been prepared in accordance with Australian accounting standards. In our opinion the Accounts present a true and fair view of the transactions during the year ended 31st January, 1993 and the financial position of the Association at 31st January, 1993.

W.M. Hilgendorf, President

S.A. Shrimpton, Treasurer

Management Committee 1992

President Myra Hilgendorf Treasurer Sally Shrimpton

Vice President Fran van Brummelen Secretary Sue Sturup

Public Officer Alan Davis Director Cheryl Daye

Administrative Assistant Linda Bond (to August 1992)

Committee:	Michael Butson	Cliff Judge
	Oriana Ciarma	Rita Mantell
	Lyn Quintal	Sally Shrimpton
	Sue Boyce	Chris McAuliffe

Artswriters:	Mark Chapman	Luciano Giardina
	Kitty Ginter	Lindy Judge
	Amanda Laming	Megan McEvoy
	Maxine Ryder	Dora Zable

ACKNOWLEDGEMENTS

Arts Project Australia gratefully acknowledges the support of:

Health and Community Services Victoria
Department of Health, Housing and Community Services
Department of Sport and Recreation
Australia Council - Community Cultural Development Unit
Victorian Ministry for the Arts
City of Northcote
The Body Shop
National Gallery of Victoria - Access Gallery
Artshop
Louise Bradley Framing
School of Art and Design, RMIT Bundoora Campus
Australian Print Workshop
Anne Pottage
Bristol Paints
Manfax
Red Cross Society - Vermont Branch
Andrew Hoyne Design
Andrew Sutton
Agee Art Consultants
City of St. Kilda

Printing and Binding - Janefield Special School Annexe

Arts Project Australia Inc. is recognised as a charitable organisation by the Australia Taxation Office. Donations of \$2.00 and over are tax deductible.



3 0328 10393472 4