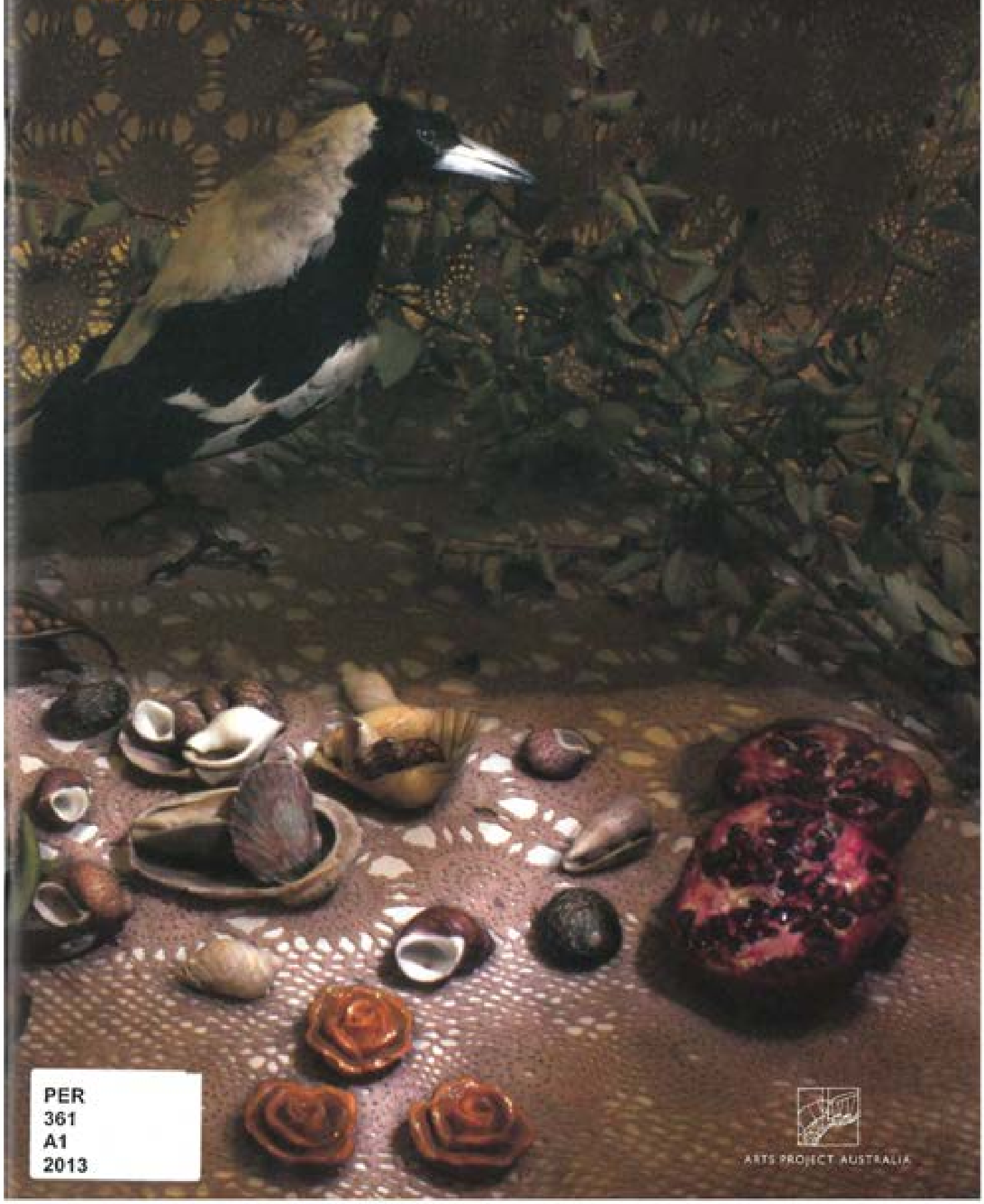


Arts Project Australia

ANNUAL REPORT 2013



PER
361
A1
2013



ARTS PROJECT AUSTRALIA



Patron's Foreword

Arts Project Australia provides the environment and support to unlock the creative power of artists. And not just any artists, these people have a unique gift, and, a disability.

Their tools are paint, clay and collage, and through that, they create a vision of their world for all to appreciate.

Arts Project Australia's social impact evaluation is featured in this year's Annual Report. It is clear that the Arts Project has a powerful positive impact for its artists, their families, art lovers, collectors and the broader community.

Thérèse Rein



above right:
Jordan Zoray, *Jaguar sitting the fence of the forest*
2012, oil on paper, 20 x 20 cm

left:
Jordan Zoray, *Two owls* 2012
oil on paper, 20 x 20 cm

above right:
Jordan Zoray, *Two owls* 2012
oil on paper, 20 x 20 cm

Our Mission

To be a centre of excellence that supports artists with intellectual disabilities, promoting their work and advocating for their inclusion within contemporary art practice.



About Arts Project Australia

Founded in 1974, Arts Project Australia was conceived as a dedicated space for visual art, to promote authentic self-expression and to provide access to professional quality materials and support from practising contemporary artists. Following years of incremental growth, Arts Project established the first full-time arts studio in Australia for artists with an intellectual disability in 1990. In the nearly four decades since its inception, Arts Project has won numerous awards and has built a reputation nationally and internationally as a leader and innovator in both the arts and disability sectors.

Arts Project advocates through its provision of a dedicated studio and gallery space

where artists with an intellectual disability are treated with sincerity, their creative direction is supported and their art work is promoted on its artistic merit amongst the wider arts community.

The studio and gallery are located in Northcote, Victoria. The studio is attended by over 100 artists each week, some of whom have been coming for more than 20 years. Artists attend between one and five days a week and are supported by qualified artists to develop their own art practice. Here, art is not taught, but rather the innate creative direction of each artist is nurtured to elicit works of personal meaning and style. Media include painting, drawing, ceramics, printmaking, puppetry and digital art.

The gallery stages an annual program of exhibitions featuring work by Arts Project artists. Increasingly, there has been a trend towards collaborative projects with external artists.

Arts Project is a registered charity and non-profit organisation, which is governed by a volunteer Board and managed and staffed by a small team of qualified, experienced and committed professionals. It is an independent organisation which is supported by the sale of art work, donations and bequests from private groups and individuals, as well as grants from government and a range of philanthropic trusts and foundations.

Board of Management

Catherine Easton	President from February 2013 Vice-President to February 2013
Jonah Jones	President (resigned February 2013)
Neil Twist	Vice-President from March 2013
Sean Gaskell	Secretary
Mashelle Parrett	Treasurer
Wendy Foard	Member (resigned June 2013)
Danien Hodgkinson	Member
Bronwyn Johnson	Member
Norman Rosenblatt	Member
Silvana Scibilia	Member

Life Members

Cheryl Daye
Peter Fay
Kitty Ginter
Rita Mantel
Sally Shrimpton

Members

99 (includes Life Members)

Staff

Sue Roff	Executive Director
Sandy Ferrie	Business Manager
Sam Lutton	Gallery Manager & Curator
Pierrette Boustany	Studio Manager
James McDonald	Team Leader - Studio
Cheryl Daye	Projects and Development Manager
Penny Hunt	Registrar
Melissa Petty	Gallery Assistant
Allison O'Callaghan	Studio & Gallery Assistant
Brad Runbridge	Gallery Technician / Artworker (casual)
Adriane Hayward	Gallery Assistant
Emiko Davies	Gallery Assistant
Glenn Dalton	Artworker - Ceramics
Rachael Guy	Artworker - 3D
Jessie Inam	Artworker - General and Digital Media
Ching Yee Ng	Artworker - Digital Media
Ben Walsh	Artworker - Printmaking
Lyn Young	Artworker - General / Gallery Technician
Nicole Macdonald	Artworker - General
Elys McCleary	Artworker - General
Suzanne Brown	Artworker - General (Casual)
Peter Douglas	Artworker - General (Casual)
Camille Hannah	Artworker - General (Casual)

Volunteers

Kate Barker (2013)
Leila Boakes (2011-12)
Laine Carr (2012)
Prue Capell (2013)
Christian Clegg (2012)
Lois Coleman (2013)
Lois Conlan (2013)

Leila Costa (2012-13)
Elyse De Valle (2008-12)
Kerstone Elliott (2009-12)
Louise Fabre (2012)
Todd Harrison (2013)
Gabrielle Hingston (2013)
Debra Howlett (2011-13)
Olivia Jackson (2012)
Jodie Lee-Miller (2011-13)

Margaret McIntosh (2013)
Kate Parker (2013)
Olivia Parr (2012-13)
Michael Pearce (2011-13)
Clara Price (2012-13)
David Russell (2012)
David Thomson (2012-13)
Meg Williams (2012-13)
Marlene Zarnit (2013)

Special Thanks

Fintona Student Placements:
Sylvie Le Couteur
& Bridget Cochrane-Holley
Australian Catholic University
Student Placements:
Jessica Riley & Lloyd Malakal
RMIT Student Placement:
Catherine Miller

Supporters

We are grateful for the generous and continued support of our government, philanthropic and corporate funders.

Government

Department of Human Services
Department of Families, Housing,
Community Services and
Indigenous Affairs

Council of Adult, Community and
Further Education - Northern
Metropolitan Region
Arts Victoria

Philanthropic

Besin Family Foundation
The Amelia Eliza Holland Trust
The Bobi Jenyts Endowment
The William Angliss
Charitable Trust

Corporate Partners

ARA Consultants
Leonard Joel
Leeuwin Estate

Dining With Art Sponsors

Hemcote
Isidorsquare
Carler Wines
Melbourne Community
Farmers Markets
Third Drawer Down

Fowlers Flowers

Beraldo Coffee
Andre Davidoff
Rydges Bell City
SOFITEL Luxury Hotels
Leonard Joel
Glenn Tebbie Homewares
Glencross Woodworks
Paper-Go-Round
Web Prophets
and Bryan Dawe as MC

Donors

Arts Project Australia is grateful to those who have made financial or in kind gifts to assist our important work.

Antony Aristovoulou
Gerry Costigan
Myra and Zev Degen
Catherine Easton
Peter Fay
Lynne Farnell
Helen Gargan
David and Linda Gold

Danien Hodgkinson
Robin Kintley
T & S Mantavanos
Clinton McQueen
Sassy Park and Karl Scherffler
Ian Renard
Norman Rosenblatt
The Scovell Gardner Family

Anne Stonehouse AM
Neil Twist
Mark Vetch
Mitty Williams
Dennis and Taub Wilson
Housing Resource and Support
Services
Lowenslens Arts Management



President's Report

As Arts Project Australia moves into its 40th year, it is with great pride that I reflect on the importance of our organisation to the lives of artists, their families, staff, volunteers and the Board. Our very existence today and long history of providing a space for artists to develop their individual art practice, is testament to the many, many people who are passionate and committed to our place in the community and contemporary art world.

The Board was led by Jonah Jones until February 2013. Jonah has been a supporter of Arts Project for many years and through his leadership we have experienced significant positive changes in the organisation's culture and profile in the arts. In addition, it was Jonah's vision for our 40th year that has been the catalyst for the planning activity undertaken to date.

Plans for our 40th anniversary in 2014 have continued to take shape with a range of celebratory events and exhibitions that will occur throughout the year. We have secured a partnership with the University of Melbourne to conduct an International Outsider Art conference in October 2014. The conference program is under development with highly regarded international and Australian keynote speakers already locked in.

I would like to take the opportunity to congratulate Peter Fay, an important friend to Arts Project Australia and long time collector of self-taught and outsider art, who was bestowed a Life Membership by the Board and our members. This is in recognition of Peter's contribution to Arts Project and his unwavering advocacy for the artist's work.

The strategic foundations set by the Board four years ago, have delivered significant outcomes for Arts Project in terms of organisational stability, diversified funding growth, an improved profile and opportunities for our artists. Earlier this year, the Board completed a major review of the organisation's Strategic Plan. In anticipation of a growing trend towards understanding the community contribution of not-for-profit organisations, the Board commissioned a Social Impact Study. The work was completed in conjunction with the Net Balance Foundation and we are very pleased to include some of the outcomes for Arts Project in this year's Annual Report. This study will both inform and confirm to our stakeholders and potential funders, the value that Arts Project Australia brings to our artists, stakeholders and broader community.

In addition to achieving excellent audit outcomes against state and federal disability standards, a number of other significant governance activities have taken place this year. The Policy and Planning Sub-Committee completed an overhaul of the organisation's policies and procedures, to streamline and enhance the content with consideration to the Departments of Human Services and Family and Housing, Community Services and Indigenous Affairs requirements.

Following a Board review and mandatory amendments to comply with the new Incorporations Act, at a Special General Meeting members endorsed changes to the Rules of Association.

With increasing competition for funding, Arts Project Australia continues to be focused on diversifying its income streams with contributions from government, philanthropic trusts and foundations, the corporate sector and individuals. We thank the Victorian Department of Human Services, the Adult, Community and Further Education Board and the Federal Department of Family and Housing, Community Services and Indigenous Affairs for their ongoing support.

In addition, we are supported by many philanthropic organisations including the Besin Family Foundation, the Amelia Eliza Holland Trust and the William Angliss (Victoria) Charitable Trust. Our corporate partners, ARA Consultants, Leonard Joel and Leeuwin Estate, have continued to provide very generous support. On behalf of the artists, staff, management and the Board, I thank all our supporters and partners for their commitment to Arts Project Australia.

This year marks the end of my term on the Board and in the last seven years I have been fortunate to experience a period of consolidation and growth, as well as Arts Project firmly positioning itself as an artists' studio and gallery with an enviable reputation. I would like to thank past and present Board members for their support and steadfast commitment to Arts Project Australia.

Notwithstanding all that the celebrations in 2014 will bring, Arts Project Australia is moving into an exciting period which will see it continue to deliver quality programs and nurture the development of our artists. On behalf of the Board, I would like to thank the artists for their inspiring and incredible work, and management, staff and volunteers for their contribution to our wonderful organisation.

Catherine Easton



Dorothy Gaudes and Alan Boreman in the office of ADA
Consultation with an artwork by Alison Aitken



Deputy Lord Mayor Susan Riley presents the ABCD Q&A Award to
Arts Project President, Jonah Jones and Gallery Manager & Curator, Sam Lutton



Melissa Petty gift wrapping at the Annual Gala

"Arts Project gives my life purpose. I think Arts Project is where I am meant to be in my life. Without it, I would be lost." - Artist



Artist Nicole Macdonald (left), external artist Angela Cleveland (centre) and Peter Taylor



Artist Ben White working with Sue Cost

Social Impact Study

In conjunction with the Net Balance Foundation, Arts Project Australia has recently undertaken a study to understand the social impact of our organisation. The purpose of the project was to employ outcomes-based measurement techniques to provide a richer narrative of the broader social value of Arts Project. We believe that Arts Project is very good at articulating what we do and how we do it. This project has been crucial to determining the underlying reasons as to why we exist and the contribution we make to the lives of artists, families, staff, board and supporters.

Through a mix of interviews, focus groups and surveys, 41 people were involved in this project, which was managed by an Arts Project staff team with support from Net Balance. Thank you to all the people who gave their time to this project and contributed such rich and insightful stories. The key outcomes for each stakeholder group were as follows:-

Artists are the primary beneficiaries of the Arts Project studio and gallery program and being involved with Arts Project has improved their overall quality of life. It has given them peace of mind; made them more empowered and autonomous; increased their sense of fulfilment and self-worth; encouraged personal development; provided them with social contact and friendships; and given them the opportunity for economic participation by earning money from their work.

The existence of Arts Project has meant that family members experience reduced stress from caring for artists and greater peace of mind from knowing artists are in a stimulating and supportive environment. They also experience pride in the artist by sharing and celebrating their achievements in the studio and gallery.

"I get more out of the artists than I give. The artists give so much to us and the art... it's a privilege to be a part of that."

- Arts Project staff



2012 Arts Project Oaks Exhibition

"Makes me feel over the moon when I sell work. I feel proud when I get money which I can save for something in the future." - Artist

"He's aware of his work and that people like it. Being at Arts Project has fulfilled him and given him a reason to live."

- Artist's parent



Jessica Klam Art (2012) silk on paper 30 x 95.5cm

The studio, gallery and administrative staff also experience a range of social impacts from their involvement with Arts Project, including increased fulfilment as a result of being in a role that is aligned with their interests and has meaning and purpose; developing their own art practice and professional skills; and building relationships and friendships.

The Arts Project Board reported a greater sense of vitality, purpose and fulfilment; a sense of pride and personal satisfaction; and greater awareness of issues related to disability.

Curators, collectors and collaborating artists that support Arts Project all reported that their interaction with Arts Project had provided them with greater enjoyment and meaning from art; a sense of pride and satisfaction; and greater level of empathy and patience. In addition, the collaborating artists felt they had developed their own art practice by working alongside Arts Project artists.

The outcomes of this project will be complemented by our involvement in an Economic and Social Impact Study of Public Art Museums being conducted through a partnership between Melbourne Business School, Deakin University, the Public Galleries Association of Victoria and Arts Victoria. Arts Project Australia was one of four galleries in Victoria invited to participate in the study, the results of which will be published in November 2013.

Through direct consultation this project has enabled Arts Project Australia to describe the value we create and outcomes for our stakeholders and importantly, artists. Throughout this year's Annual Report you will be able to read quotes which provide insights to the heart and soul of Arts Project, and the important role we play in the lives of members of our community.



Cathy Staughton shows Hindwood designs, Nicole Page Zena Dorechew's artwork



Liam Reed



Alan Davidson Art (2012) bronze 18.5 x 24 x 9cm

"I had never worked collaboratively until Arts Project and it has opened my mind about where my practice can go."

- Collaborating artist



Executive Director's Report

Things never seem to slow down at Arts Project Australia, and the past year has been no exception. We continue to strive for excellence in our work, and this is being widely recognised throughout the local and international community.

Highlights for the financial year have included:

- Winning the AbwF City of Melbourne SME Award for our ongoing partnership with Leonard Joel (now in its third year)
- Another successful stand at the 2012 Melbourne Art Fair, engaging with many new collectors, and an 8% increase in artwork sales from the 2010 Fair
- Firmly embedding our new Digital Media program into studio practice, with extraordinary results from participating artists
- Installing a new server and upgrading our IT systems to meet increased demands
- Refreshing our website, adding a blog, and maximising our social media presence
- Holding the successful 'Dining with Art' fundraiser in our gallery in conjunction with the Melbourne Food and Wine Festival, and introducing new supporters to our organisation

We have been actively exploring ways to use our building more sustainably, and the installation of

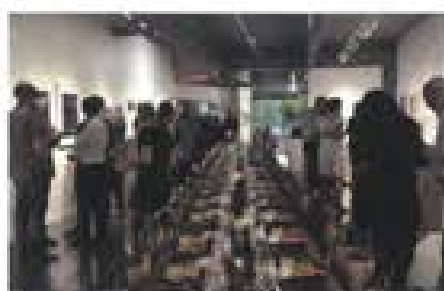
LED lighting in the gallery has seen a significant decrease in energy bills.

Our studio program continues to flourish and adapt to the needs of individuals, and we have seen a growth in external field trips. In addition to in-house specialist workshops and programs. The studio is rarely below 100% capacity – a testament to the extraordinary staff who work side by side with our artists – and a high level of satisfaction has been recorded through our recent social impact study. An ongoing highlight of the year has been the *Knowing Me-Knowing You* project, with 10 Arts Project artists collaborating over a twelve month period with 10 external artists. This journey is being documented and will culminate in the first exhibition for 2014.

Our gallery team also work tirelessly in preparing exhibition programs, both in our gallery and externally, as well as entering artists in prizes and seeking commissions and leasing opportunities. We have a remarkable group of volunteers who give of their time in a variety of ways, and a Board of Management who are generous with their time and expertise.

Thanks to everyone for another exceptional year at Arts Project Australia – and particularly to our talented artists and their families and supporters.

Sue Roff



above: Quetta welcomes Dining with Art

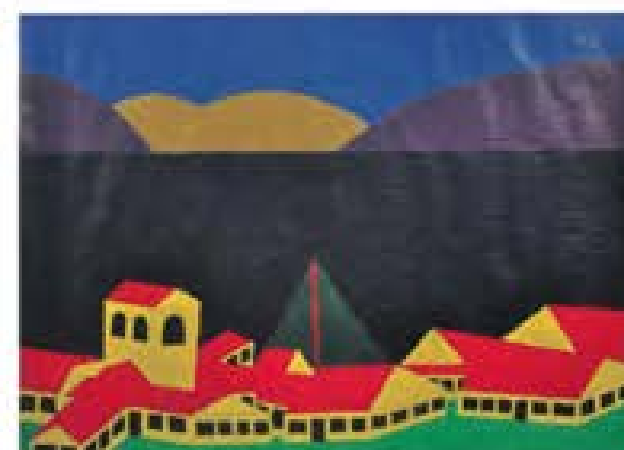
far left: Dana Cline, founder, Peter Day with Founding Directors, Glenn Doyle and Arts Project parent, Betha Sedlard

left: The Bennett Home and Dorian Casson

right: Melissa Brown, October 2012, oil on paper 30 x 28.5cm

"Arts Project is a place where artists are welcome and treated with dignity and that is something I want to support."

- Collector



Julio, House Not listed (3), Saphorn handknaps, Series 4 April 2013, acrylic on paper 80 x 70cm



Carbottier (Blaugheim) Nick trust me I'm a Jedi 2013, acrylic on canvas 80 x 60cm

Artists

Arts Project Australia would like to acknowledge the following artists who attended the studio over the past 12 months:

Mark Adams	Colleen Clancy	Kelvin Heffernan	Matte Michael	Kellie Seedsman
Steven Aizenberg	Ashlee Cochrane	Paul Hodges	Miranda Millane	Aidan Selo
Alvaro Alvarez	Alan Constable	Ruth Howard	David Mossop	Laura Sheehan
Fulli Andrinopoulos	James Cornelious	Miles Howard-Wilks	William Neville	Sandra Silvestri
George Aristovoulou	Leo Cussen	John Huggins	Jenny Ngo	Brandon Slee
Geoffrey Barnett	Jamie Dawes	Veruzza Iaconis	Cindy Nguyen	Mark Smith
John Bates	Wendy Dawson	Thomas Iacono	Nhan Nguyen	Louise Spencer
Desmond Beavis	Emily Dober	Michael Keen	Cameron Noble	Catherine Staughton
Peter Ben	Alanna Dodd	Kate Knight	Jodie Noble	Malcolm Sturrock
Erica Berechree	Robyn Doherty	Milivoj Kovacic	Tim Noble	Lindsay Sutherland
Dorothy Berry	Beverley Duncombe	Stefanie Kraemer	Christopher O'Brien	Georgia Szmerling
Clarke Bouritz	Jordan Dymke	Bobby Kyriakopoulos	Warren O'Brien	Fiona Taylor
Katrina Brennan	Luke Earle-Vignati	Monica Lazzari	Daniel Pace	Amani Tia
Robert Brown	Jessica Ebert	Adrian Lazzaro	Michael Paul	Michael Trasancos
Monica Burns	Samuele Fenech	Andrew Ledwidge	Steven Perrotte	Philip Truett
Antonella Calvano	Scott Ferguson	Joceline Lee	Christopher Philbey	Rebecca Vanston
Michael Camakaris	Sandra Fielding	Fiona Longhurst	Gavin Porter	Cameron Veitch
Donna Canzano	Martin Foster	Anne Lynch	Josef Power	Kelly Williams
Nicholas Capaldo	Katherine Foster	Orion Manzart	Lisa Reid	Terry Williams
Marisa Cappelli	Patrick Francis	Julian Martin	Daniel Richardson	Timothy Williams
Riccardo Cardinale	Ian Gold	Antonella Masino	Kieran Roberts	Stewart Wylie
Peter Cave	Lai Lai Gong	Christopher Mason	Anthony Romagnano	
Samraing Chea	Matthew Gove	Graham McBride	Christopher Sahyoun	
Valerio Ciccone	Bronwyn Hack	Kaye McDonald	Adrian Salvatore	
Boris Cipusev	Brigid Harrahan	Keith McDonald	Rebecca Scibila	

"If there was no gallery and nowhere
I could sell work or win any prizes,
I would be sad and feel less special."

- Artist



Low Peal
Not toed (2013) canvas
7.5 x 22 x 26.5cm (approx)

The Drawing Wall Project

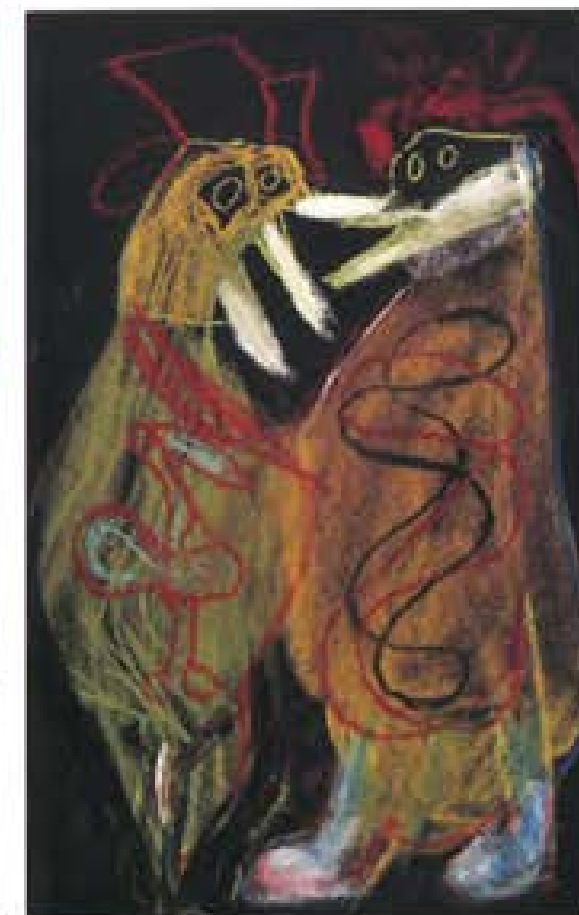
Shepparton Art Museum (SAM) regularly commissions artists to produce new and experimental artworks directly onto their Eastbank Foyer wall. In March 2013, Arts Project artist, Michael Camakaris was invited to be a SAM Drawing Wall artist and he jumped at the opportunity, saying "I'm very excited to be invited to work on a large art commission. It was great to have the chance to speak to the curator [Elise Routledge] about the project when she visited Arts Project." Michael was Drawing Wall artist #11 in the series.

Michael spent a week in Shepparton, creating an elaborate artwork across more than 12 metres of white wall at the museum. He applied his experience in drawing and painting to respond to the local iconic Art Cows.



"I defy anyone to not be
impressed by the work
of the artists."

- Curator



Chloeine from top left
Julian Martin, not toed (2013)
print on paper 24.5 x 38cm

John Huggins
Penguins napping (2013)
print on paper 17 x 38cm

Patrick Perrotte
Steven Perrotte (2013)
acrylic on paper
18.5 x 50.5cm

Michael Camakaris at work
in the studio

Valerie Cussen with her parents,
Tessa and Pat Cussen at the
opening of Peripheral Observer





left: Valerio Ciccone, painting a wall for the 2012 Annual Gala

center: Camilla Noble Four mixed, 2013 panel on paper 50 x 50cm



Exhibitions Report

The gallery completed another remarkable year, representing and showcasing the work of over 110 artists through exhibitions as well as stockroom, website and exhibition sales, image licensing, leasing and loan programs. We curated and coordinated exhibitions in our internal program as well as through our extensive external exhibitions program in Melbourne, nationally and internationally. The work presented included painting, drawing, printmaking, 3D sculpture, ceramics, puppetry, animation and digital art.

Highlights of our internal program included the staging of a major solo exhibition of work by Valerio Ciccone titled *Peripheral Observer*, with a full-colour catalogue sponsored by Leonard Joel Auctions; solo exhibitions by artists Anne Lynch and Kelvin Heffernan; and two group exhibitions of Arts Project and external contemporary artists' work as part of our External Curator Program, curated by Mark Feary (Artspace, Sydney) and Geoff Newton (Neon Parc, Melbourne).

Our external program included participating in exhibitions in major external galleries and institutions such as at Melbourne Art Fair (August 2012); *The Machine*, curated by Debbie Pryor, Craft, Melbourne (January 2013); *Outsiderism*, curated by Alex Baker, Fleisher Ollman Gallery, USA (March 2013); and *Alan Constable/Ten Cameras*, curated by Ricky Swallow, South Willard, USA (May 2013).

Additionally, we submitted successful entries in noteworthy art prizes and award exhibitions, including the 2012 Mornington Peninsula National Works on Paper Prize (Adrian Lazzaro); 2012 NAVA - Credit Suisse Art Award (Patrick Francis); and 2012 Paul Guest Art Prize (Steven Aizenberg).

Other highlights included hosting the Dining with Art fundraising dinner in the Arts Project Australia gallery in collaboration with over 10 fabulous local supporters as part of the Melbourne Food and Wine Festival Fringe Events Program; our Open Stockroom Series on the first

Saturday of each month; and the upgrade of our website and addition of a new art blog.

We have continued to sell and lease artwork to corporate, private and public agencies, providing great exposure for our artists and Arts Project in the wider community. In 2013, we were fortunate to begin working with staff from Melbourne City Mission, who selected a significant number of artworks for lease in their offices and common areas in South Melbourne. We also consigned artworks to Fleisher Ollman Gallery, Philadelphia, USA; Third Drawer Down, Fitzroy; Modern Times, Collingwood; and Franque, Prahran.

The success of the gallery is achieved through the wonderful work by our artists and the assistance of our committed volunteers and student placements, each providing incredible support to the staff and artists at Arts Project Australia. We look forward to building on our national and international successes in 2013/14 as we prepare for our 40th Anniversary.

"The professionalism of Arts Project sets it apart. It has made my son feel more professional and given him confidence and a sense of self worth." - Artist's parent



left: Michelle and his artwork



center: Anne Lynch 2010 acrylic on paper 50 x 60cm



at the Table March 2013



center: Camilla Noble Four mixed (After Picasso) 2013 panel on paper 50 x 50cm

Internal Exhibitions Program



Peter Cave Art: 2011
acrylic on paper 60 x 50cm

Error & Judgement

Exhibition: 27 Jul - 4 Sep 2012
Curated & opened by: Mark Feary, Artspace, Sydney
Error and Judgement focused on the possibilities of mistakes and their capacity to lead to unplanned and unintended positive outcomes.

Valerio Ciccone: Periglacial Objects

Exhibition: 8 Sep - 16 Oct 2012
Curated & opened by: Dr Cheryl Daye
Valerio Ciccone's work spans almost thirty years and his major survey exhibition was a testament to the varied portfolio Ciccone has developed over that time. Coinciding with the exhibition was the launch of catalogue number two in the Leonard Joel Series artist publications.

The Great Un-Reveal

Exhibition: 20 Oct - 27 Nov 2012
Curated by: The Sisters Hayes
Opened by Heidi Victoria MLA Parliamentary Secretary to the Premier & Assistant the Premier with the Arts. The Great Un-Reveal was an exciting collaborative exhibition combining the talents of Arts Project artists and The Sisters Hayes.

Annual Gala

Exhibition: 6 Dec - 17 Dec 2012
Arts Project Australia's yearly exhibition program culminates with the Annual Gala exhibition, an end of year event celebrating the achievement of over 100 current artists.



Michael Thompson Art: 2011
acrylic on paper 38 x 28.5cm



Anne Lynch Art: 2011
dry pastel on paper 30 x 28cm

Walking the Line

Exhibition: 9 Feb - 12 Mar 2013
Curated by: Melissa Petty
Walking the Line explored the beauty, engagement and richness of artistic responses to line and mark making through drawing, works on paper, printmaking and photography by Arts Project Australia artists.

Anne Lynch Solo

Exhibition: 9 Feb - 12 Mar 2013
This was Anne Lynch's first solo exhibition and featured 22 artworks dating from 2001 onwards.

At the Table

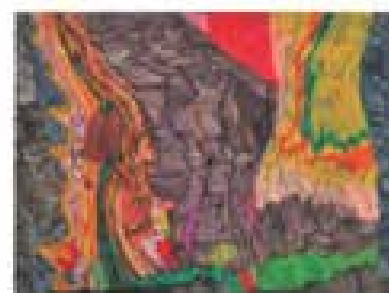
Exhibition: 16 Mar - 16 Apr 2013
Curated by: Emiko Davies
This exhibition explored the theme of food, its domestic setting, its rituals and its symbols in the work of Arts Project Australia's artists.

Dining with Art

(coincided with At the Table)
Event: 14 Mar 2013
This event offered an exclusive preview of the exhibition At the Table together with a unique art, fundraising & dining experience. Ten local traders generously support this one-off event, as part of the umbrella event program in the Melbourne Food and Wine Festival.



Paul Hodges Art: 2012
pencil on paper 18 x 12cm



Rebecca Scibilia Art: 2011
left: past paper 38 x 38.5cm

Video Doctor

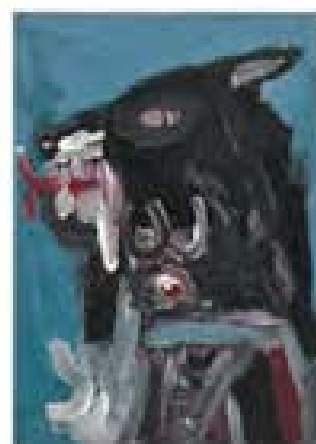
Exhibition: 20 Apr - 28 May 2013
Curated & opened by: Geoff Newton, Neon Parc, Melbourne
Working in collaboration with Arts Project and Electronic Arts Intermix New York, Video Doctor brought together work by international and Australian artists.

Repeat, Repeat...Reiterate

Exhibition: 1 Jun - 6 Jul 2013
Opened by: Prof Dr Barbara Bolt, Victorian College of the Arts
Curated by: Penelope Hunt
Repeat, Repeat...Reiterate paid homage to the dedication of practice that drives artists to keep investigating an idea, and in turn, revealing it anew.

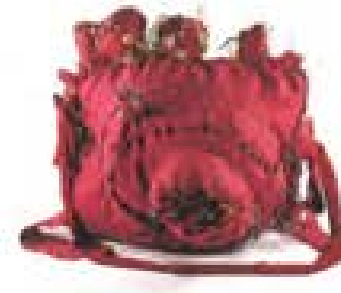
Kelvin Heffernan Solo

Exhibition: 1 Jun - 6 Jul 2013
Kelvin Heffernan's paintings and ceramic work reflect a vibrant energy. While his subjects often related to people and events in his life, his work also revisits infamous characters from history such as bushrangers. We were saddened that Kelvin passed away before the opening of his exhibition, being the first solo show of his career, however were honoured that we had the opportunity to celebrate his life as an artist through the dynamic exhibition of his recent work.



Kelvin Heffernan Art: 2013
acrylic on paper 18 x 28cm

External Metropolitan & National Exhibitions



Dray Williams Art: 2012
mixed media, acrylic, oil, ink, collage, 3D, 2D, 28 x 27 x 28cm

Tour de France

HADMusée, Liège, Belgium
Exhibition: 30 Jun - 27 Jul 2012
Artist: Valerio Ciccone

Paul Guest Drawing Prize 2012

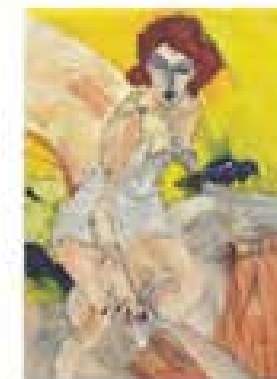
Bendigo Art Gallery, Bendigo, VIC
Exhibition: 14 Jul - 26 Aug 2012
Finalist: Steven Aizenberg

Melbourne Art Fair 2012

Royal Exhibition Building, Carlton, VIC
Exhibition: 2 - 5 Aug 2012
Artists: Steven Aizenberg, Alvaro Alvarez, Fulli Andrinopoulos, George Anstovoulos, John Bates, Dorothy Berry, Michael Camakaris, Dionne Canziano, Nick Capaldi, Peter Cave, Valerio Ciccone, Boris Opusek, Alan Constable, Leo Cussen, Wendy Dawson, Robyn Doherty, Patrick Francis, Bronwyn Hack, Kelvin Heffernan, Paul Hodges, Miles Howard-Wilks, Ruth Howard, Kate Knight, Adrian Lazzaro, Joceline Lee, Anne Lynch, Julian Martin, Chris Mason, David Mossop, Nhan Nguyen, Cameron Noble, Tim Noble, Chris O'Brien, Warren O'Brien, Daniel Pace, Michael Paul, Steven Perretts, Gavin Porter, Anthony Romagnano, Adrian Salvatore, Rebecca Scibilia, Kellie Seedman, Cathy Staughton, Malcolm Sturrock, Fiona Taylor, Michael Tsiencos and Terry Williams



Bobby Kynakopoulos Art: 2012
collage and ink on paper 35 x 25.5cm



Adrian Lazzaro Art: 2012
ink and charcoal on paper 60 x 50cm

For We are Young and Free

Toyota Community Spirit Gallery, Port Melbourne, VIC
Exhibition: 8 Aug - 26 Oct 2012
Finalist: Peter Cave

Modern Times Pop-Up Shop

Modern Times, Collingwood, VIC
Event: 16 Aug 2012
Artists: Fulli Andrinopoulos, Ruth Howard, Julian Martin and Warren O'Brien

2012 National Works on Paper Prize

Mornington Peninsula Regional Gallery, VIC
Exhibition: 19 Aug - 7 Oct 2012
Finalist: Adrian Lazzaro

Terry Williams: A Stitch in Time

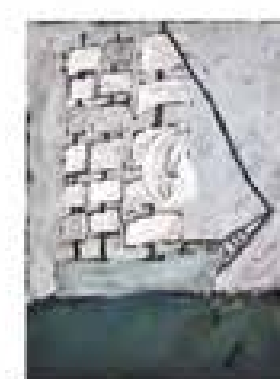
The Substation, Newport, VIC
Exhibition: 25 Oct - 18 Nov 2012
Curated by: Penelope Hunt

My Puppet, My Secret Self

The Substation, Newport, VIC
Exhibition: 25 Oct - 18 Nov 2012
Curated by: Rachael Guy
Artists: Dorothy Berry, Nick Capaldi, Bronwyn Hack, Paul Hodges, Adrian Lazzaro, Cameron Noble, Mark Smith, Malcolm Sturrock and Fiona Taylor



Lisa Reid Art: 2012
acrylic on canvas 50 x 50cm



Malcolm Sturrock Art: 2012
graphite on paper 28 x 28cm

Halo and the Glory of Art

McGlade Gallery, ACU Sydney, NSW
Exhibition: 19 Sep - 6 Oct 2012
Artists: Fulli Andrinopoulos, Andrew Barbour, Peter Ben, Dorothy Berry, Kieren Carroll, Paul Hodges, Adrian Lazzaro, Julian Martin, Cathy Staughton and Terry Williams
Curated by: Laura Martin

ANL Maritime Art Prize & Exhibition

Mission to Seafarers, Docklands, VIC
Exhibition: 5 Oct - 31 Oct 2012
Finalists: Malcolm Sturrock and Steven Perretts

Connected 12

Yarra Building, Federation Square, VIC
Exhibition: 20 Nov - 4 Dec 2012
Finalists: Erica Berchies, Peter Cave, Robyn Doherty, Miles Howard-Wilks, Kate Knight, Bobby Kynakopoulos, Adrian Lazzaro, Nhan Nguyen, Daniel Pace, Gavin Porter, Kellie Seedman and Malcolm Sturrock

Art & Australia Collection 2007-2012

Newcastle Art Gallery, NSW
Exhibition: 8 Dec - 17 Feb 2013
Artist: Patrick Francis



Mark Smith Art: 2012
mixed media 27 x 44 x 20cm

External Metropolitan & National Exhibitions



Terry Williams in progress piece for Magic Mountain at Craft

Belle Arti Prize

Chapman & Bailey Gallery, Abbotsford, VIC
Exhibition: 12 Dec - 26 Jan 2012
Artists: John Bates, Michael Camakaris, Dionne Candano, Paul Hodges (Highly Commanded), Cathy Staughton and Fiona Taylor

Magic Mountain

Craft, Flinders St, VIC
Exhibition: 18 Jan - 2 Mar 2013
Curated by: Debbie Pryor, Craft
Artist: Terry Williams

Linden Postcard Show

Linden Contemporary Art Centre, St Kilda, VIC
Exhibition: 2 Feb - 23 Mar 2013
Artists: Clarke Bourick, Michael Camakaris, Peter Cave, Robyn Doherty, Bobby Kynakopoulos and Michael Trasancos

Outsiderism

Reisher Olman Gallery, Philadelphia, USA
Exhibition: 18 Apr - 8 Jun 2013
Curated by: Alex Baker, Director, Reisher Olman
Artists: Alan Constable, Julian Martin, Chris Mason and Lisa Reid



Bobby Doherty The Outback 2012
acrylic on paper 20 x 20 cm



Peter Ben, Alan Constable 2011
acrylic on paper 20 x 20 cm

Classic Albums

Tanks Arts Centre, Cairns, QLD
Exhibition: 15 Mar - 5 Apr 2013
Curated by: Ben Welch
Artists: Des Beevis, Peter Ben, Erica Beneschree, Valerio Occone, Alan Constable, Leo Cussen, Emily Dober, Patrick Francis, Rex Hodges, Thomas Jacano, Kate Knight, Adrian Lazzaro, Anne Lynch, Cameron Noble, Jodie Noble, Tim Noble, Chris O'Brien, Steven Perrette, Christopher Philbey, Lisa Reid, Anthony Romagnano, Mark Smith, Georgia Somering, Fiona Taylor, Kelly Williams and Terry Williams

Alan Constable / Tom Cameron

South Willard, Los Angeles, USA
Exhibition: May 2013
Curated by: Ricky Swallow

Sam Drawing Wall

Shepparton Art Museum, Shepparton, VIC
Exhibition: 3 May - 28 Jul 2013
Artist: Michael Camakaris

World In My Eyes

C3 Gallery, Abbotsford Convent, VIC
Exhibition: 24 Apr - 12 May 2013
Curated by: Glenn Dalton
Artists: Peter Ben, Alan Constable, Matthew Gove, Brigid Harahan, Paul Hodges, Ruth Howard, Kate Knight, Chris Mason, Kaye McDonald, Cindy Nguyen, Cameron Noble, Tim Noble, Chris O'Brien, Lisa Reid, Rebecca Scibilia, Mark Smith, Malcolm Sturrock and Fiona Taylor



Matthew Gove Ant titled 2012
ceramic 20 x 20 x 14 cm



Patrick Francis, Paula Taylor 2012
acrylic on paper 20 x 20 cm

East, powered by a bear

Sheffer Gallery, Sydney, NSW
Exhibition: 24 May - 1 Jun 2013
Curated by: Peter Fay
Artist: Patrick Francis

Homemade: Outsider Art

Kick Arts (touring exhibition), Cairns, QLD
Exhibition: 24 May - 7 Jul 2013
Curated by: Camille Masson-Jalander (for Kick Arts, QLD)
Artists: Steven Alperberg, Alvaro Alvarez, Dorothy Barry, Valerio Occone, Alan Constable, Leo Cussen, Kelvin Heffernan, Allan Liebe, Anne Lynch, Julian Martin, Chris Mason, Jodie Noble, Chris O'Brien, Warren O'Brien, Steven Perrette, Lisa Reid, Anthony Romagnano, Cathy Staughton, Georgia Somering and Terry Williams

Third/Forth

VCA Margaret Lawrence Gallery, VIC
Exhibition: 31 May - 23 Jun 2013
Artist: Chris O'Brien in collaboration with Christina Hayes

Kitty Sweeney

Thornbury, VIC
Exhibition: 2012 - 13
Artists: Alvaro Alvarez, Leo Cussen, Kelvin Heffernan, Adrian Lazzaro, Julian Martin, Catherine Staughton and Michael Trasancos



Christoph O'Brien and Christina Hayes
The Chuck Show 2013 (wooden, steel, wire)
paper 20 x 20 x 20 cm

Financial Statements

- 16 Statement of Profit or Loss and other Comprehensive Income
- 17 Statement of Financial Position
- 18 Statement of Cash Flows
- 19 Notes to the Financial Statements
- 21 Directors' Declaration
- 24 Independent Audit Report to the Members of Arts Project Australia

Statement of Profit or Loss and other Comprehensive Income

for the year ended 30 June 2013

	Note	2013 \$	2012 \$
Revenue from Continuing Operations			
Government Funding:			
Commonwealth grants		227,266.10	195,875.30
State grants		710,104.16	615,172.87
Fundraising:			
Capital grants		-	16,695.96
Other grants		63,210.57	19,000.00
Sponsorship		10,000.00	14,375.60
Donations		84,009.20	187,500.16
Exhibition/art work sales		161,728.80	114,066.53
Studio fees		41,333.25	66,669.80
Leasing of artworks		3,150.00	4,067.00
Membership fees		3,745.60	3,593.30
Other Income:			
Interest received		16,832.89	16,514.25
Sales of fixed assets		-	100.00
Miscellaneous income		11,577.77	9,884.60
Total income	3	1,332,960.34	1,263,515.37
Administration expenses		136,664.65	78,667.07
Advertising/public relations		49,415.49	83,745.80
Building and equipment		69,585.20	67,187.52
Commission on art sales		107,820.27	71,676.45
Depreciation		25,788.86	23,174.00
Employee expenses	4	817,847.28	821,669.47
Finance and interest		757.63	973.96
Gallery		60,395.41	50,726.49
Postage and telecommunications		14,968.02	11,874.84
Minor asset purchases		19,571.26	27,081.78
Programs		7,464.33	5,407.12
Total expenses		1,310,218.40	1,242,184.50
Net surplus for the year/Total comprehensive income for the year		22,741.94	21,330.87

The statement of profit or loss and other comprehensive income is to be read in conjunction with the attached notes.

Statement of Financial Position

for the year ended 30 June 2013

	Note	2013 \$	2012 \$
Assets			
Current assets			
Cash and cash equivalents	5	119,257.59	495,161.03
Trade and other receivables	6	3,440.24	8,349.60
Total current assets		122,697.83	503,510.63
Non-current assets			
Term Deposits		306,819.46	-
Property, Plant and Equipment	7	1,626,192.72	1,625,292.28
Total non-current assets		1,933,012.18	1,625,292.28
Total assets		2,055,710.01	2,128,802.91
Current Liabilities			
Trade creditors and other payables	8	94,136.04	125,775.33
Other current liabilities - unearned grants		-	69,821.55
Total current liabilities		94,136.04	195,596.88
Non-current liabilities			
Provisions	9	15,378.00	9,752.00
Total non-current liabilities		15,378.00	9,752.00
Total liabilities		109,514.04	205,348.88
Net Assets		1,946,195.97	1,923,454.03
FUNDS			
General Funds		1,946,195.97	1,923,454.03
Total Funds		1,946,195.97	1,923,454.03

This statement of financial position should be read in conjunction with the attached notes.

Statement of Cash Flows

for the year ended 30 June 2013

Note	2013	2012
	\$	\$
Cash Flows from Operating Activities		
Receipts from:		
Government Grants	937,370.26	810,048.17
Sales of artwork	161,728.80	144,066.53
Interest Received	16,832.89	16,514.25
Memberships	3,745.60	3,593.30
Fund raising	87,398.22	240,228.33
Other operations	60,972.38	80,721.40
Cash payments to suppliers and employees	-1,310,442.83	-1,145,012.28
Net cash flows from operating activities	10	-42,394.68
Cash Flows from Investing Activities		
Purchase of property, plant and equipment	-26,689.31	-15,493.38
Purchase of term deposits	-306,819.46	-
Net cash used in investing activities	-333,508.77	-15,493.38
Cash Flows from Financing Activities		
Net cash provided by (used in) financing activities	-	-
Net increase (decrease) in cash held	-375,903.45	105,666.32
Cash at the beginning of the financial year	495,161.04	389,494.92
Cash and cash equivalents at the end of the financial year	4	119,257.59

The statement of cash flows is to be read in conjunction with the attached notes.

Statement of Changes in Funds

Opening retained results from operations	1,923,454.03	1,902,123.16
Net surplus attributable to the association	22,741.94	21,330.87
Closing retained results	1,946,195.97	1,923,454.03

The statement of changes in funds is to be read in conjunction with the attached notes.

Notes to the Financial Statements

for the year ended 30 June 2013

1. Association Information

The financial statements of the not-for-profit association, Arts Project Australia Inc., for the year ended 30 June 2013 were authorised for issue in accordance with a resolution of the board on 12th August 2013.

Arts Project Australia Inc. is an incorporated association in Victoria, registered under the Associations Incorporation Reform Act 2012.

2. Summary of significant accounting policies

(A) BASIS OF PREPARATION

The financial report is a general purpose financial report, which has been prepared in accordance with the requirements of the Associations Incorporation Reform Act 2012, Australian Accounting Standards - reduced disclosure requirements, accounting interpretations and other authoritative pronouncements of the Australian Accounting Standards Board.

The association has early adopted AASB 1053 Application of Tiers of Australian Accounting Standards and AASB 1012-2 Amendments to Australian Accounting Standards arising from Reduced Disclosure Requirements for the financial year beginning on 1 July 2012. The association is a not for profit entity which is not publicly accountable. The adoption of AASB 1053 and AASB 2010-2 impacted on the extent of disclosures in the financial report and the reclassification of some comparative information. There was no other impact on the current or prior year financial statements.

The financial report has been prepared on an accruals basis and is based on historic costs and does not take into account changing money values, or except where specifically stated, current valuations of non-current assets. The financial report is presented in Australian dollars.

The association has not early adopted any other new standards or interpretations. The association has assessed that there will be no material impact on the adoption of accounting standards issued with effective adoption dates post financial year end.

The following material accounting policies, which are consistent with the previous period unless otherwise stated, have been adopted in the preparation of this financial report.

(B) SIGNIFICANT ACCOUNTING JUDGEMENTS, ESTIMATES AND ASSUMPTIONS

The preparation of financial statements requires management to make judgements, estimates and assumptions that affect the application of policies and reported amounts of assets, liabilities, income and expenses. The estimates and associated assumptions are based on historical experience and other factors that are believed to be reasonable under the circumstances, the results of which form the basis of making the judgements. Actual results may differ from these estimates.

The estimates and underlying assumptions are reviewed on an ongoing basis. Revisions to accounting estimates are recognised in the period in which the estimate is revised if the revision affects only the period or in the period of the revision and future periods if the revision affects both current and future periods.

Significant accounting judgements, estimates and assumptions are outlined in the notes below.

(C) REVENUE RECOGNITION

Revenue is measured at the fair value of consideration received or receivable. Revenue is recognised net of the amounts of goods and services tax (GST) payable to the Australian Taxation Office (ATO).

Government funding

The association's activities are supported by grants received from the federal and state governments. Grants received on the condition that specified services are delivered, or conditions are fulfilled, are considered reciprocal. Such grants are initially recognised as a liability and revenue is recognised as services are performed or conditions fulfilled. Revenue from non-reciprocal grants is recognised when the company obtains control of the funds.

The association has received a number of government grants during the year. Once the association has been notified of the successful outcome of a grant application, the terms and conditions of each grant are reviewed to determine whether the funds relate to a reciprocal grant (i.e. payment for services rendered) in which case it is accounted for under AASB 118 Revenue or a non-reciprocal grant in which case it is accounted for under AASB 1004 Contributions.

Revenue from fundraising

Donations are recognised as revenue when the company gains control, economic benefits are probable and the amount of the donation can be measured reliably.

Sale of goods

Revenue from sales of artworks is recognised at the point of sale where the control of the goods passes to the customer.

Interest Income

Interest income is recognised when it is probable that the economic benefits will flow to the association and the amount of revenue can be measured reliably. Interest income is recognised as it accrues using the effective interest rate method.

Fees from artists

Fees charged for services provided to artists are recognised when received.

(D) EXPENDITURE

All expenditure is accounted for on an accruals basis and has been classified under headings that aggregate all costs related to the category.

(E) CASH AND CASH EQUIVALENTS

Cash and cash equivalents in the statement of financial position and for the purpose of the statement of cash flows comprises cash at bank, in hand and short-term deposits with an original maturity of three months or less, less any outstanding bank overdrafts.

(F) TRADE AND OTHER RECEIVABLES

Trade receivables, which comprise amounts owing from services provided to artists generally have 30-day terms, are recognised and carried at original invoice amount less an allowance for any uncollectible amounts. Collectability of trade receivables is reviewed on an ongoing basis with an allowance for doubtful debts made when there is objective evidence that

Notes to the Financial Statements

for the year ended 30 June 2013

the association will not be able to collect the debts. Uncollectable debts are written off when identified.

(G) PROPERTY, PLANT AND EQUIPMENT

The depreciable amount of all fixed assets are depreciated over the useful lives of the assets to the association commencing from the time the asset is held ready for use. Property, plant and equipment are depreciated over useful lives ranging from 3 to 10 years.

Land and buildings are independently revalued every 3 years. A commercial valuation was received during the 2011/12 financial year. The valuation amount has not been included in the financial statements at 30 June 2013. Refer to Note 7.

Plant and equipment and motor vehicles are carried at cost less, where applicable any accumulated depreciation and impairment loss.

Land and buildings are not depreciated.

Impairment

The carrying amounts of property, plant and equipment are reviewed for impairment at each reporting date, with recoverable amount being estimated when events or changes in circumstances indicate that the carrying amount may be impaired. No impairment was required during 2012 and 2013.

(H) TRADE CREDITORS AND PAYABLES

Trade payables and other payables represent liabilities for goods and services provided to the company before the end of the financial year that are unpaid. These amounts are usually settled within 30 days. The carrying amount of the creditors and payables is deemed to reflect fair value.

(I) OTHER CURRENT LIABILITIES

The liability for deferred income is the unutilised amounts of grants received on the condition that specified services are delivered or conditions are fulfilled. The services are usually provided or the conditions are fulfilled within 12 months of the receipt of the grant.

(J) EMPLOYEE BENEFITS

Employee benefits comprise wages and salaries, annual, non-accumulating sick and long service leave and contributions to superannuation plans.

Liabilities for wages and salaries expected to be settled within 12 months of the reporting date are recognised in other payables in respect of employees' services up to the reporting date. All annual leave is expected to be settled in 12 months. These liabilities are measured at amounts expected to be paid when the liabilities are settled and amounts settled 12 months from the end of the reporting period are discounted.

The liability for long service leave is recognised in the provision for employee benefits and is measured as the present value of expected future payments to be made in respect of services provided by employees up to the reporting date. Consideration is given to anticipated future wage and salary levels, experience of employee departures and period of service. Expected future payments are discounted using market yields on national government bonds with terms to maturity that match as closely as possible, the estimated cash outflows.

The association pays contributions to certain accumulation superannuation plans. Contributions are recognised in the statement of comprehensive income when they are due. The association has no obligation to pay further contributions to these plans.

(K) TRADE AND OTHER PAYABLES

Trade and other payables are carried at amortised cost and due to their short-term nature they are not discounted. They represent liabilities for goods and services provided to the association prior to the end of the financial year that are unpaid and arise when the association becomes obliged to make future payments in respect of the purchase of goods and services. The amounts are unsecured and are usually paid within 30 days of recognition.

(L) PROVISIONS AND EMPLOYEE ENTITLEMENTS

Provisions are recognised when the association has a present obligation as a result of a past event, it is probable that an outflow of resources embodying economic benefits will be required to settle the obligation and a reliable estimate can be made of the amount of the obligation.

Liabilities for wages and salaries, annual leave expected to be settled within 12 months of the reporting date are recognised in respect of employees' services up to the reporting date. They are measured at the amounts expected to be paid when the liabilities are settled. Expenses for non-accumulating sick leave are recognised when the leave is taken and are measured at the rates paid or payable.

The liability for long service leave is recognised and measured at the present value of expected future payments to be made in respect of services provided by employees up to the reporting date. Consideration is given to expected future wage and salary levels, experience of employee departures, and the periods of service. Expected future payments are discounted using market yields at the reporting date based on government bonds with terms to maturity and currencies that match, as closely as possible the estimated future cash outflows.

(M) TAXATION

Income tax

The association is a charitable institution for the purposes of Australian taxation legislation and is therefore exempt from income tax. The association holds deductible gift recipient status.

Goods and Services Tax

Revenues, expenses and assets are recognised net of the amount of GST, except where the amount of GST incurred is not recoverable from the ATO, in which case it is recognised as part of the cost of acquisition of an asset or as part of an item of expense. Receivables and payables are recognised inclusive of GST.

The net amount of GST recoverable from or payable to the ATO is included as part of receivables or payables.

Cash flow is included in the statement of cash flows on a gross basis. The GST component of cash flow arising from investing and financing activities that is recoverable or payable to the ATO is classified as operating cash flow.

Notes to the Financial Statements

for the year ended 30 June 2013

	2013	2012
3. Revenue		
(A) Revenue		
Sale of goods	161,728.80	114,066.53
Government grants	937,370.26	811,048.17
Donations, gifts, sponsorships	157,219.77	237,571.72
Interest income	16,832.89	16,514.25
Other	59,808.62	84,314.70
Total revenue	1,332,960.34	1,263,515.37
4. Employee Benefits Expense		
Wages and salary	806,337.19	816,793.53
Workers compensation	13,617.74	7,608.48
Movement in employee benefits provision	-2,107.65	-2,732.54
Total employee benefits expense	817,847.28	821,669.47
5. Cash and Cash Equivalents		
Bank Accounts		
Operating Account	50,827.56	28,483.71
Gifts Account	26,379.62	18,082.90
Short Term Deposits	41,740.41	449,181.22
Clearing Account	-1,285.00	-743.00
Petty Cash	1,595.00	156.20
Total cash and cash equivalents	119,257.59	495,161.03
6. Trade and other Receivables		
Trade debtors	3,772.69	8,349.60
Less provision for doubtful debts	-337.45	-
Total trade and other receivables	3,440.24	8,349.60
7. Property, Plant and Equipment		
Land - at cost	264,000.00	264,000.00
Building- at cost	1,262,442.18	1,262,442.18
Plant and Equipment - at cost	267,163.58	293,407.28
Plant and Equipment - accumulated depreciation	-174,762.43	-204,048.82
Motor Vehicle - at cost	21,430.64	21,430.64
Motor Vehicle - accumulated depreciation	-15,706.25	-13,564.00
Permanent Art Collection - at cost	1,625.00	1,625.00
Total property, plant and equipment	1,626,192.72	1,625,292.28

During the 2011/12 year, the Board commissioned an independent valuers report on the valuation of the freehold land and buildings held by the association. The valuation received, on a commercial operation basis was \$2,360,000, compared with a current carrying value of \$1,262,442.18. The Board resolved to note the valuation, but not to adopt or incorporate the valuation figure into the financial statements.



BABBAGE & Co

Public Accountants &
Financial Advice Provider

Suite 5
191 Riversdale Road
Hawthorn 3122
Victoria Australia
P.O. Box 4075
Auburn South 3122
Telephone +61 3 9819 1988
Facsimile +61 3 9819 2465
Email info@babbage.com.au

ARTS PROJECT AUSTRALIA INC

ABN: 99 804 795 393

INDEPENDENT AUDITOR'S REPORT TO THE MEMBERS OF
ARTS PROJECT AUSTRALIA INC

Report on the Financial Report

We have audited the accompanying financial report of ARTS PROJECT AUSTRALIA INC (the association), which comprises the statement of financial position as at 30 June 2013, the statement of profit or loss, the statement of other comprehensive income, statement of changes in equity and statement of cash flows for the year then ended, notes comprising a summary of significant accounting policies and other explanatory information, and the certification by members of the committee on the annual statements giving a true and fair view of the financial position and performance of the association.

Committee's Responsibility for the Financial Report

The committee of the association is responsible for the preparation and fair presentation of the financial report in accordance with Australian Accounting Standards (including Australian Accounting Interpretations) and the Associations Incorporation Reform Act 2012 (Vic) and for such internal control as the committee determines is necessary to enable the preparation and fair presentation of the financial report that is free from material misstatement, whether due to fraud or error.

Auditor's Responsibility

Our responsibility is to express an opinion on the financial report based on our audit. We conducted our audit in accordance with Australian Auditing Standards. Those standards require that we comply with relevant ethical requirements relating to audit engagements and plan and perform the audit to obtain reasonable assurance about whether the financial report is free from material misstatement.

An audit involves performing procedures to obtain audit evidence about the amounts and disclosures in the financial report. The procedures selected depend on the auditor's judgment, including the assessment of the risks of material misstatement of the financial report, whether due to fraud or error. In making those risk assessments, the auditor considers internal control relevant to the association's preparation and fair presentation of the financial report in order to design audit procedures that are appropriate in the circumstances, but not for the purpose of expressing an opinion on the effectiveness of the entity's internal control. An audit also includes evaluating the appropriateness of accounting policies used and the reasonableness of accounting estimates made by the committee, as well as evaluating the overall presentation of the financial report.

We believe that the audit evidence we have obtained is sufficient and appropriate to provide a basis for our audit opinion.

Opinion

In our opinion, the financial report of ARTS PROJECT AUSTRALIA INC is in accordance with the requirements of the Associations Incorporation Reform Act 2012 (VIC), including:

- (i) giving a true and fair view of the association's financial position as at 30 June 2013, and of its performance for the year ended on that date; and
- (ii) complying with Australian Accounting Standards as disclosed in Note 2.

Auditor's signature:

Jim Babbage

Auditor's address:

Babbage & Co
Suite 5/191 Riversdale Road
Hawthorn VIC 3122

Dated this 19th day of August 2013

ART360514



Liability limited by
a scheme approved
under Professional
Standards Legislation.

Vale

Kelvin Heffernan 1958 – 2013



Long-time studio artist Kelvin John Heffernan passed away peacefully on Friday 17th May 2013 surrounded, as he wished, by family and friends after a short battle with cancer.

Commencing at Arts Project Australia in 1991, Kelvin's artwork remained strong and consistent over his career. He was a dedicated artist who overcame his physical difficulties to produce works of great confidence and intent.

Equally at home working in paint, pastel, pencil, ink or ceramics, Kelvin created art inspired by both imagination and life. Often the subjects or themes would be violent, involving guns, daggers, snarling dogs or dragons, but they could just as equally be tender, especially in his portrayals of people he cared for.

In Kelvin's work the warrior figure appears again and again, not so much as the aggressor, but the defender, fighting life's battles on a singular and individual quest. There is also a sense of the outsider in these depictions: perhaps this is the figure of the artist, an existential portrait of inner and outer lives. For Kelvin, in many ways life was a battle, but he took its challenges with resilience and a sense of the ability to overcome. Nowhere is this more evident than in his art.

Within a year of starting in the studio, Kelvin's work was shown as part of a major Arts Project Australia exhibition *Inside Out/Outside In*, at the National Gallery of Victoria. During his career Kelvin's work was included in more than fifty exhibitions, both in Australia and overseas. He has been represented by Arts Project Australia at every Melbourne Art Fair since 1996, and shown in major Australian commercial galleries including Australian Galleries (Sydney and Melbourne), Greenaway Art Gallery (Adelaide), the Chapman Gallery (Canberra). Through an association with the Australian Print Workshop his work is held in the collection of the National Gallery of Australia. He is also represented in the STOARC Collection of Outsider Art in Sydney.

Through his work Kelvin was able to express a personal realm in powerful visual imagery. What typifies his work is its fervent, controlled energy; his use of paint unmistakable in its physicality. Kelvin's dedication and productivity have left us a rich and enduring legacy. Anyone who knew Kelvin could not help connecting with his engaging presence and admiring his passionate approach to art-making. He will be greatly missed as part of the Arts Project community.

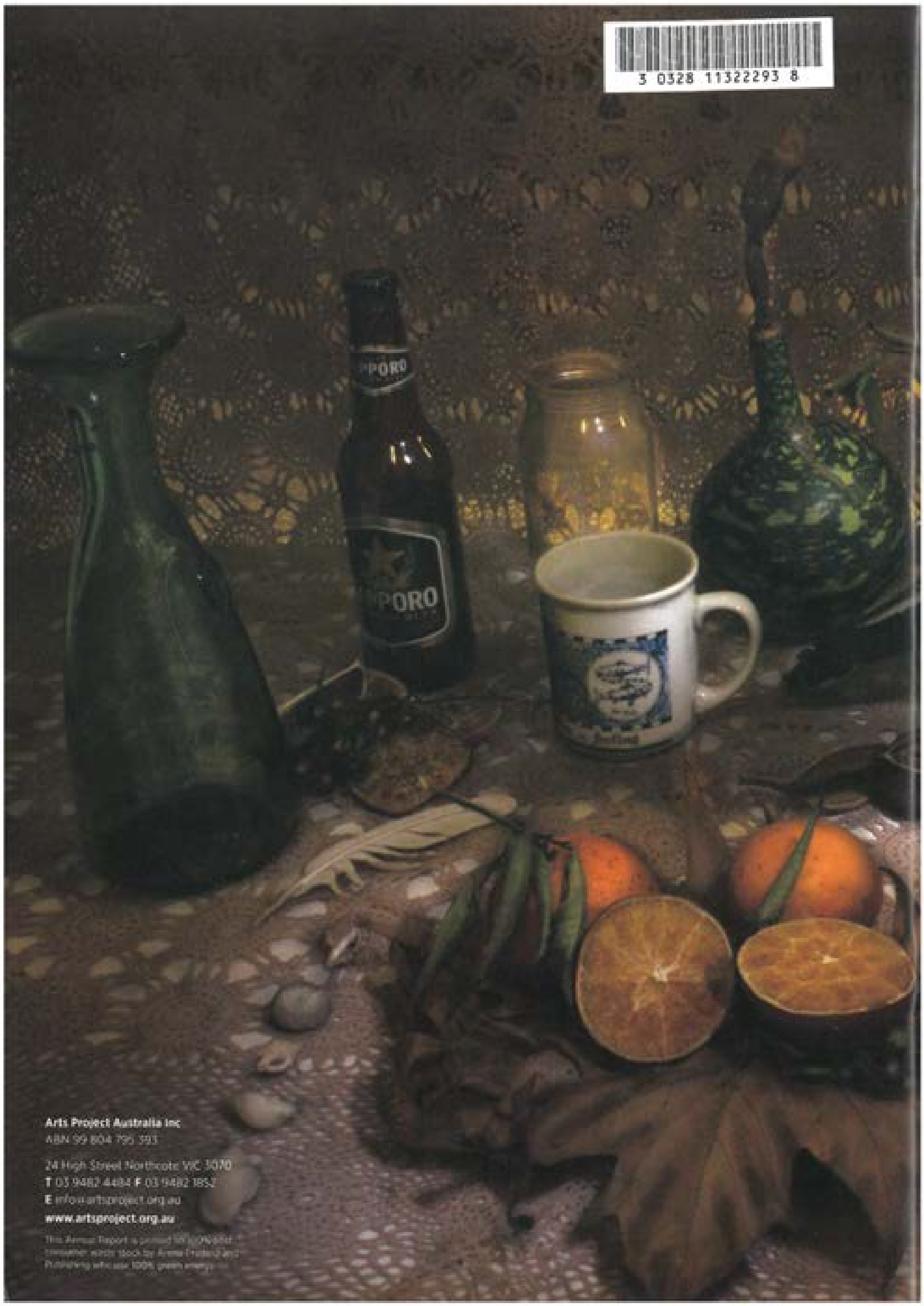
We were honoured to host Kelvin's memorial service in the Arts Project Australia gallery.



Kelvin Heffernan, Untitled 2003
Acrylic on paper 28 x 38cm



3 0328 11322293 8



Arts Project Australia Inc

ABN 99 604 795 393

24 High Street Northcote VIC 3070

T 03 9482 4484 F 03 9482 1852

E info@artsproject.org.au

www.artsproject.org.au

This Annual Report is printed 100% on 100%
recycled paper, using 100% green energy and
100% green inks.