



Canadian Opera Company's Rebecca Blankenship in *Erwartung*, at the Melbourne Festival.

## Booking with EASE

**Booking Office Hours**  
Monday to Thursday  
10am - 4pm only

### What's On?

First check your daily papers, free entertainment guides and other sources of information, then check EASE dates in the *EASE Ticket Update* before booking.

### Bookings

Phone Lisa on 699 8497  
or TTY 699 8497

### Access Information

EASE can provide information about access and facilities at venues in and around Melbourne.

### Method of Payment

Pay at the EASE office or by posting a cheque or money order made out to ARTS ACCESS. Payment is never made at the venue. Please note Items 4 and 7 of the Conditions of Sale.

## Conditions of Sale

1. Tickets are sold only to EASE subscribers and are not transferable.
2. Tickets are sold to staff members of an organisation on the understanding that they are attending an event as a support person for the clients of that organisation, and under no other circumstances.
3. There is no exchange or refund of tickets. A booking cannot be cancelled.
4. Tickets must be paid for within 14 days.
5. EASE will purchase tickets, where possible, to suit a subscriber's particular requirements.
6. The EASE quoted price varies from the price printed on tickets because an EASE commission is added to each sale.
7. EASE staff reserve the right to cancel or suspend membership if conditions of sale are breached.

# Ease

## Entertainment Access Service

109-111 Sturt Street  
SOUTH MELBOURNE VIC 3205

Bookings & TTY: 699 8497  
Administration: 699 7636  
Fax: 699 8868

### EASE Staff

Dean Michael - EASE Project Officer  
Lisa McKoy - EASE Bookings Officer

### Volunteers

Karen Brooks, Roisin Johnson,  
John Pidd, Gaye Walsh, and  
NADRASCA volunteers.

EASE is a project of Arts Access and is funded from a range of sources, particularly the Federal Department of Community Services and Health (Disability Services) and Sport & Recreation Victoria. Income earned through service fees, subscriptions and ticket commissions helps support the project.

Arts Access is assisted by Arts Victoria and the Commonwealth Government, through the Australia Council, its arts funding and advisory body.



**EASE** is a newsletter of Arts Access Society Inc.  
Registered by Australia Post  
Print Post Publication No. PP 325649/1004

Ms Michelle Hosking  
State Library Of Victoria  
328 Swanston Street  
MELBOURNE 3000

If undelivered return to:  
Arts Access Society Inc.  
109-111 Sturt Street, South Melbourne, VIC 3205 Australia

# Ease



Celebrating 20 Years of  
Participation, Innovation  
& Excellence 1974-1994

# ARTS Access

Newsletter of the Entertainment Access Society - a project of Arts Access ISSN 1038-2879 Spring 1994



## Melbourne Festival '94

- hot EASE tix

Fire and water are the thematic touchstones for the spectacular opening night festivities for this year's **Melbourne International Festival of the Arts** on Thursday, October 13.

Free outdoor entertainment, stretching from the National Gallery to Flinders Street Station, will include excerpts from Opening Night Galas on a giant outdoor screen, and brilliant, climactic fireworks over the Yarra to the fanfare of Handel's *Music for the Royal Fireworks*.

EASE has secured tickets to a wide range of Festival attractions this year - but be quick - these shows are expected to be hot sellers. Highlights include:

**Picasso at the Lapin Agile** - by Steve Martin. Wacky, intelligent, charming, great to watch - just like Steve in the cafe queue at the Malthouse. If this is half as funny as the workshopped version staged last year it will be a night to remember. And will Steve make it to Melbourne?

**Canadian Opera** - present two 20th Century masterpieces: Bartok's *Bluebeards Castle* and Schoenberg's *Erwartung*. Director, Robert Lepage's reputation for inspired theatre, using spectacle, fantasy, and psychological insight is a strong recommendation. 'A blood-red double bill'.

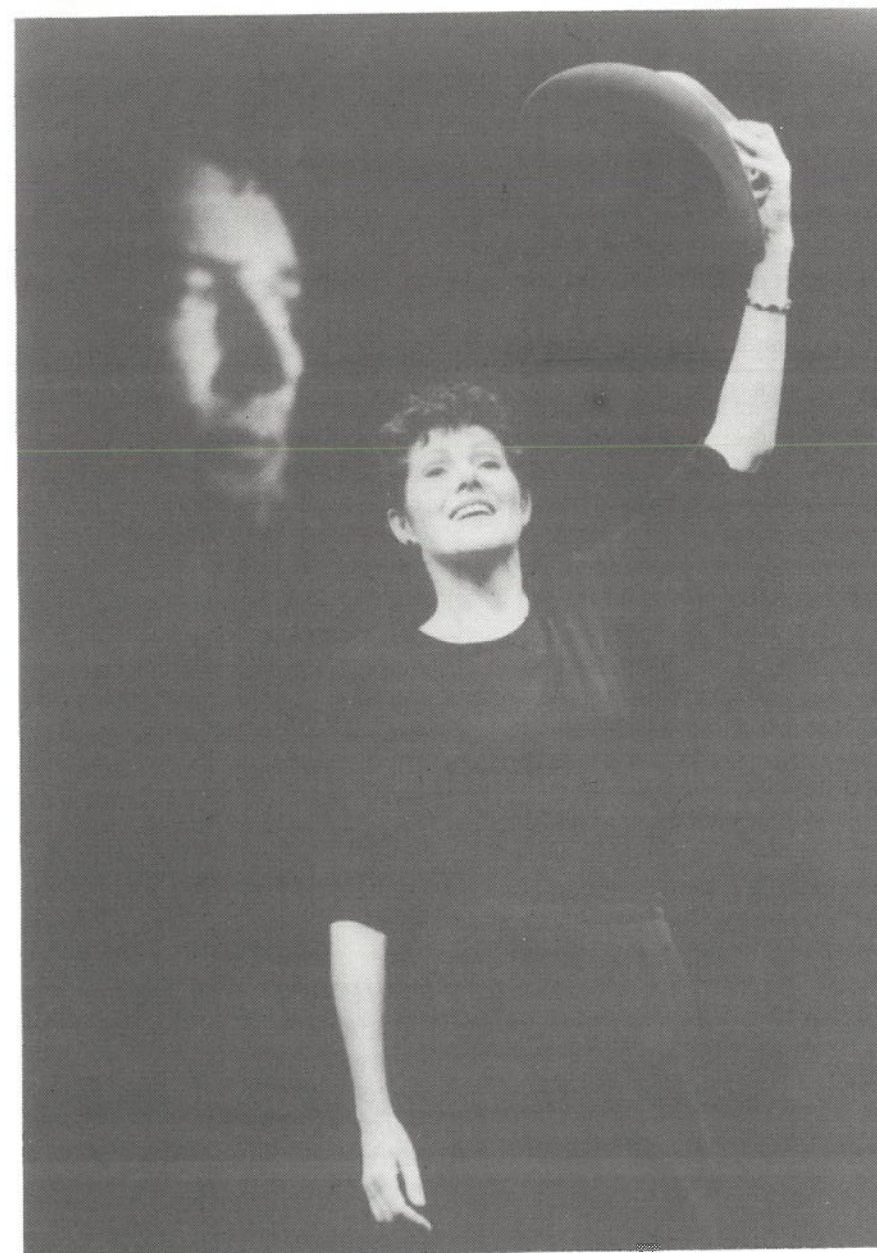
**That Eye The Sky** - a theatrical adaptation of the novel by Australian author, Tim Winton. A story of love faith and the magic of a boy's spirit, set against a powerful Australian landscape.

**Shakespeare for My Father**, stars Lyn Redgrave, whose distant, unloving Dad (Sir Michael) did Shakespeare for others. Here she tells her comic, tragic, family story where art and life illuminate each other.

Check EASE Ticket Updates for details.

### INSIDE:

- \* Bass Training Seminar
- \* DDA bites - first actions
- \* Venue Profile: Last Laugh



Above: Lynn Redgrave in *Shakespeare for My Father* at the Melbourne Festival.

## Low cost, high value at Melbourne's Fringe

The Melbourne Fringe Festival (October 2-22) is a yearly chance to take 'affordable risks' with your entertainment dollar, with exciting experiences in every kind of artform in every kind of venue under the sun.

The Fringe displays both the raw and polished talent of Melbourne's 'alternative' and emerging performers, visual artists, musicians, video makers, plus artists from Austria, Japan, Switzerland and New Zealand.

The Festival begins at the Parade and Street Party in Brunswick Street, Fitzroy on Sunday October 2, followed by the Opening Night performance extravaganza at the Universal Theatre. This year's Festival Club is the Builder's Arms, 211 Gertrude Street Fitzroy. Check the Fringe program for the many free or low cost events. For a copy phone 534 0722.

EASE Bookings 699 8497 10am to 4pm Mon-Fri

AF  
790.19605  
EA7



## EDITORIAL

### BASS training success

On August 17, EASE held an information seminar for 25 BASS staff on issues faced by people with disabilities who are consumers of arts and entertainment.

Held at the Merlyn Theatre at the CUB Malthouse, the afternoon event included staff from 13 BASS outlets, including the head office at the Arts Centre.

The seminar achieved many things. Staff gained a broader understanding of what disability can mean for individual patrons; were introduced to the Disability Discrimination Act; learned strategies to appropriately respond to unfamiliar behaviour or circumstances; and the role of EASE within the arts and entertainment industry was explained.

A valuable segment was the panel session where Jan Doran, Jane Trengove, Caroline Crosse and Danny McGrath spoke on issues for people with vision impairment, mobility difficulties and schizophrenia, respectively.

BASS staff have responded with requests for more training of this kind. EASE intends to offer more information and training sessions to the wider arts and entertainment industry in the future.

Our thanks to Bass Training and the staff of the CUB Malthouse for their support in making this a very successful seminar.

*Dean & Lisa*

### EASE Ticket Payments

are due strictly 14 days after receipt of invoice. A 3% charge is added to overdue accounts to cover expenses and time. Consistent late payers will be asked to pay in advance.

## NEWS

### DDA shows its teeth

The Human Rights and Equal Opportunity Commission (HREOC) has taken two actions under the federal Disability Discrimination Act (DDA).

In the first case to go to a formal hearing the HREOC has awarded a man with a mental illness \$20,000 compensation for economic loss, pain and humiliation following his dismissal by the Tasmanian Auditor General's Office. The Commission found that the man had been dismissed without being given a fair opportunity to demonstrate his ability to perform the requirements of his job after he had received treatment. The man had subsequently found another job and so was not reinstated.

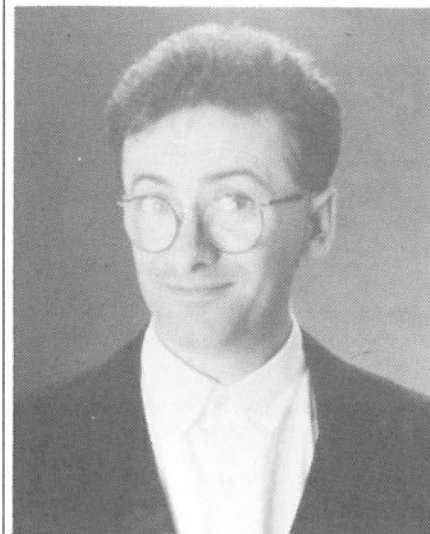
In late July, the Commission issued an interim order directing the NSW State Rail Authority to halt a tender process for construction of a new railway station serving Newcastle University until a complaint - alleging that failure to make the station accessible to people with disabilities would be unlawful - can be dealt with under the DDA.

For further information about the DDA, contact the Human Rights & Equal Opportunity Commission (02) 229 7600 or the Disability Discrimination Law Advocacy Service (03) 602 4877.

### Strategic Planning

EASE staff, steering committee members and consumers are working with facilitator, Miriam Bass on the future direction of EASE. Meetings have led to the development of a new mission statement, discussions of

Who is this man, why is he smiling, and what does he have to do with EASE?



All will be revealed - soon!

membership issues and promotions, and new, stronger relationships are being developed with promoters, venue managers and funding bodies.

The strategic planning process is one way that EASE can assure it will continue to respond to the needs of consumers and offer the best ticketing service possible.

### Venue Guide offer

EASE is still 'giving away' both editions of *The Melbourne Venue Guide* for only \$2.50 (postage and handling). Send a cheque or money order to:

Venue Guides, EASE/Arts Access, 109-111 Sturt Street, South Melbourne VIC 3205.

### ARTS ACCESS STUDIO

A low-cost, multi-purpose space suitable for art and craft exhibitions, rehearsals, small scale performances, classes, workshops or seminars.

Facilities include: \* Wheelchair access \* Accessible toilets

\* Disability parking bay \* Audio & Video

\* Exhibition hanging system \* Kitchen facilities \* Chairs \* Tressle tables \* Whiteboard \* Piano \* Catering can be arranged next door at the Malthouse Cafe \* Easy public transport - trams 1, 2 and 4 stop outside.

The Arts Access Studio is located at 109-111 Sturt Street, South Melbourne. For information contact Samantha on 699 8299 or TTY 699 8497.

## Venue Profile

### The Last Laugh

One of the most consistently popular venues among EASE subscribers is the Last Laugh Theatre Restaurant in Collingwood.

The major reason for the venue's popularity - apart from the natural attraction of comedy and the high standard of the shows - is the staff's ability to provide congenial, personal service throughout the evening.

EASE subscribers report that the Last Laugh has demonstrated a positive attitude and a keenness to accommodate patrons using wheelchairs and those with particular seating needs. However there is one problem. As with many venues in Melbourne the toilets are not wheelchair accessible.

While facilities remain unsuitable for everyone's needs, other access problems have been solved. A ramp at the front of the building provides wheel chair access to the foyer, box office and through to the seating and performance areas.

One advantage at the Last laugh is that once you've arrived at your table, you don't need to move about. Meals and drinks are brought to you throughout the show.

Lets hope the Last Laugh's commitment to giving all its patrons a great night out - and its willingness to respond to the needs of people with disabilities - continues.

### Audio Description

All bookings for Audio Description performances are through EASE on 699 8497. Subscribers are advised to book well in advance.

#### Angels in America

The Playhouse, Victorian Arts Centre  
Part 1 - Tuesday, 13 Sept, 7.00pm  
Part 2 - Tuesday, 20 Sept, 7.00pm

#### The Shaughraun

The Playhouse, Victorian Arts Centre  
Monday, 28 November, 6.30pm  
Wednesday, 23 November, 1.00pm  
Saturday, 26 November, 4.00pm  
Thursday, 1 December, 8.00pm

## EASE Ticket Highlights



Above: Glynn Nicholas is a very modern model of a 'modern Major General' in Gilbert & Sullivan's *Pirates of Penzance* at Her Majesty's.

### MELBOURNE FESTIVAL

**Katia and Marielle Labeque**  
**Snugglepot & Cuddlepie**  
**Freak Show**

modern American culture and shifting values in the age of AIDS. Richly comic, poetic, confronting theatre.

### THEATRE

\* **Alexander Theatre, Monash Uni.**  
**Falling From Grace**

Playbox, QTC & STC.

Hannie Rayson's witty and revealing study of the lives of a group of women friends.

\* **CUB Malthouse**  
**Remember Ronald Ryan**  
Playbox.

Barry Dickens' new play retells the legend and the reality of the last man hanged in Australia.

#### Call My Name

Somebody's Daughter Theatre.

This group devised production conceived during the Save Fairlea Women's Prison campaign, puts everyone on trial! Also see the exhibition at the Arts Access Studio.

\* **Playhouse, Vic. Arts Centre**  
**Angels in America, Parts 1 & 2.**

Melbourne Theatre Company.

Part 1, *Millennium Approaches*, was voted by Melbourne critics as the theatrical highlight of 1993. Part 2, *Perestroika*, premiered in London and New York last November. Tony Kushner's play is a visionary tale of

### The Shaughraun

Melbourne Theatre Company.

Dion Boucicault's play (pronounced Shock-ron), is about a lovable Irish larrikin, Con, who helps a wrongly accused man from a fate worse than death. *The Bulletin* raved about the 'mesmerising' performance of Marcus Graham as Con.

### SPORT

#### Basketball

EASE will have tickets to Melbourne Tigers finals games that are played at Flinders Park. The finals ladder will be determined after September 23. Prices and allocations will be decided after that date. Phone EASE for details then.

### EXHIBITIONS

**Renoir: Master Impressionist**  
**National Gallery of Victoria.**

NGV staff advise the best viewing times for patrons with visual impairment or who use wheel chairs, are: After 2.00 pm (Mon- Fri). Avoid Saturday afternoons and Sundays.

### CINEMA

**Free Flicks** for kids at the National Theatre, St.Kilda during September school holidays. Bookings:525 4611.

For more shows and details check the EASE Ticket Updates

The LARGE PRINT edition of the EASE Ticket Update

is now available from Lisa on Phone or TTY 699 8497