



# UNDERCOVER ARTIST FESTIVAL



# WELCOME TO UNDERCOVER ARTIST FESTIVAL

Welcome to Undercover Artist Festival. This is a landmark event for Access Arts. Never before has there been a festival in Queensland dedicated to the work of artists with disability. Undercover Artist Festival showcases exceptional work by our Queensland artists, by artists from across Australia and beyond. We hope you enjoy and are stimulated by the festival, find the work thought-provoking, stretch your creative imagination and, over the two days, make new connections and friendships.

Without our partners the festival, and the performing arts program in the months leading up to the festival,

would not have been possible. We thank Queensland Theatre Company for their extraordinary support. Queensland Music Festival, Queensland Ballet, Expressions Dance Company, Metro Arts, Deaf Services Queensland, Vision Australia, Auto & General Pty Ltd and Clovelly Estate Winery have played their part. Project funding from Australia Council for the Arts, Queensland Government, Moreton Bay Regional Council; philanthropic support from The Ian Potter Foundation and a generous donation in memory of Access Arts former management committee member, the late Diane Hill, each made an invaluable contribution. Our special thanks to Festival Director Belinda Locke,



the artists, practitioners and staff, without whose dedication and commitment this festival would not have been possible.

What next? Our aim is to help make Australia known as an international leader for arts and disability. Over 32 years the members of Access Arts have established a reputation for work that challenges, amuses, provokes and entertains. As a culturally ambitious company, we aim to build on the legacy of this first Undercover Artist Festival, but need to know what YOU think. Please share your festival experience. Visit [culturecounts.cc/s/access15](http://culturecounts.cc/s/access15) and have your say.



**Thomas Bradley QC**  
President



**Pat Swell**  
Chief Executive

# FROM THE FESTIVAL DIRECTOR

Dear Undercover Artist Festival attendees, artists, Access Arts family and friends,

I am delighted to introduce the very first Undercover Artist Festival - where **emerging and professional artists with disability are out and proud.**

---

## WE'RE HERE TO SHOW AUSTRALIA WHAT WE'VE GOT

---

To show that artists with disability are creating exceptional work and deserve representation in the major performing arts companies and venues of this country.

To provide access to audiences who are too often forgotten.

To share a diverse range of stories, thoughts and perspectives.

The program over the two days of the festival features some of the very best artists working today across Australia and New Zealand – whether they are rising stars or well established in their practice.

Theatre, dance, music and cabaret performances, works-in-progress, installation art, stand-up comedy, workshops and panel discussions will take over the Bille Brown Studio, Studio Two, Foyer, Green Room and Courtyard of Queensland Theatre Company in Brisbane.

The diversity of our voices and communication styles are reflected in the diversity of art forms presented.

Whether you are here to see the work of former Paralympic swimmer and integrated dance practitioner Jenny Newstead, who has travelled from Dunedin New Zealand with collaborator Hahna Briggs, to witness the premier of local Brisbane writer and theatre performer Karen Robert's latest work *It's Not Easy Being Green*, or to experience the stand-up comedy of Thane Pullan of Christchurch... who doesn't talk or stand-up, you are in for a treat.

The seeds for Undercover Artist Festival have been growing for some time, although they have just sprouted to the surface. During my two years on the team at Access Arts we have developed the idea for the festival through continued consultation with a range of artists experiencing disability, arts workers who work with artists experiencing disability and Access Arts members.

Special thanks to Queensland Theatre Company – in particular Producer Shari Irwin, former Artistic Associate Todd MacDonald, and Operations & Venue Supervisor Julian Messer for their tremendous support; taking the risk and being flexible to the inclusion of an ambitious and challenging event at their home venue.

As a theatre-maker and arts worker who identifies as experiencing disability, I am humbled to be the founding Festival Director of Undercover Artist Festival, and by the extraordinary effort CEO Pat Swell and the rest of the team at Access Arts have committed to making it a reality.

I hope you experience something unexpected whilst engaging with the work presented over the next couple of days, and that we may see Undercover Artist Festival become a fixture in Australia's performing arts calendar.

**Belinda Locke**  
Festival Director



Access Arts Music Ensemble

## JAZZ HANDS

**3:30PM – 4:45PM Saturday 27 June,  
Bille Brown Studio (as part of Works in Development)**

This hard-working group of musicians has been building upon their musical skills in a safe and fun group environment. Making music is one thing, but making music as an ensemble can be quite another!

To achieve this, the musicians have been studying popular and world music vocal arrangements in three-part harmony with the facilitation of Annie Peterson and Harmonie Downes. They discovered listening to one another is a crucial ingredient to creating music, which underpins the success of all collaborative work.

Come and listen to what has come of the Music Ensemble's exploration to free their expression through jam sessions on blues grooves using piano, harmonica, electric and acoustic guitars, vocals and percussion. Several original pieces written by the Music Ensemble will be performed for the very first time at Undercover Artist Festival.



Access Arts Theatre Ensemble

## A LIST OF ACQUISITIONS

**3:30PM – 4:45PM Saturday 27 June,  
Bille Brown Studio (as part of Works in Development)**

I want to spend time in the atmosphere of the theatre.  
I want to fill the room with my energy.  
I want to make the future brighter.  
I am excited. Pumped. Fierce.  
I want to keep dancing.  
I love the new space. I love new ideas.  
I am vertically challenged. I want to work. I want to move around.  
I am a little shaky.  
I want the unexpected. I want an exchange of energy.  
I want to make art. I want to get in the body.  
We know what this show is together.

Access Arts Theatre Ensemble has been facilitated by Margi Brown Ash and Daniele Constance.



# REASONABLE AND NECESSARY

Access2Arts

## REASONABLE AND NECESSARY

**Duration of Festival, Courtyard**

*What is reasonable and necessary to be a Superhero?  
Cape, tights and someone to do the laundry?*

Reasonable and Necessary is an innovative new participatory arts project that invites Deaf and disabled people to explore what's reasonable and necessary to achieve their goals.

As a creative response to the NDIS, Access2Arts in partnership with Arts Access Australia are on a mission to discover what a new future looks like for Deaf and disabled people.

Reasonable and Necessary will be both a national website and location-specific installations. Starting with an online call for text or visual imagery related to what is considered reasonable and necessary in someone's life, we will then use these contributions to create public works of art in various cities.

During Undercover Artist Festival, you are invited to spend time with visual artist Kirsty Martinson imagining what is 'reasonable and necessary' in your life and transforming the courtyard of Queensland Theatre Company into an installation of post-it notes.

## United Nations Convention on the Rights of People with Disabilities

(electronic music and audio description)

Access2Arts

## UN CONVENTION ON THE RIGHTS OF PEOPLE WITH DISABILITIES VIDEOS

**8:00PM - 9:00PM Friday 26 June, Studio Two**

To celebrate International Day of People with Disability last year, Access2Arts worked together in partnership with Adelaide City Council to produce series of creative responses responding to the United Nations Convention on the Rights of People with Disabilities.

Deaf and disabled people were filmed reciting key articles from the UN Convention, specifically those that related to Access2Arts and Adelaide City Council's relations with disabled people.

All video scripts are written in plain English and feature a diverse demographic of Deaf and disabled people who appear together in each screen shot. People use their own communication styles in the videos. All videos are captioned and audio described.





**Arts Access Australia**

**PANEL DISCUSSION:**

## **LEADERSHIP THROUGH A DIFFERENT LENS**

**1:00PM – 2:30PM Saturday 27 June, Bille Brown Studio**

Join chair Kirstin Sillitoe (Co-CEO Arts Access Australia) and panelists Robyn Archer AO (Deputy Chair, Australia Council Board), Wesley Enoch (Artistic Director, Queensland Theatre Company), Emma Bennison (Co-CEO, Arts Access Australia), Gaelle Mellis (Creative, Access2Arts) and NZ stand-up comedian Thane Pullan for a discussion that will challenge artists, arts workers and leaders of arts organisations to reconsider traditional notions of leadership.

*Leadership Through a Different Lens* is a 30-minute film that documents experiences of prominent arts and cultural leaders with disability in the UK and Ireland. The film will be the catalyst for an open conversation covering areas such as how and why leaders lead, what training is needed to grow and sustain leaders, and why diversity in arts and cultural leadership is crucial to artistic and economic success.

The film was produced by Emma Bennison, Co-CEO of Arts Access Australia thanks to an Executive Leadership grant from the Australia Council for the Arts. A preview of the film can be viewed online at: <http://www.artsaccessaustralia.au/news/587-leadership-through-a-different-lens>



**Back to Back Theatre**

## **BACK TO BACK THEATRE WORKSHOP**

**12:00PM – 3:00PM Friday 26 June, Studio Two**

Back to Back Theatre creates new forms of contemporary theatre imagined from the minds and experiences of actors with a disability, giving voice to the social and political issues that speak to all people. Based in the regional centre of Geelong, the company is one of Australia's most globally recognised and respected theatre companies.

Back to Back Theatre will hold a three hour workshop at Undercover Artist Festival for artists who identify as experiencing disability. Participants will be given the opportunity to enhance their practice by working with Back to Back Theatre's Artistic Associate Tamara Searle and Ensemble Member Romany Latham.

For more information about how to book for this workshop please see the Expression of Interest Form on Access Arts' website here: <http://accessarts.org.au/news-events/events/#post-1525>



Wild animals will kill you.

**Back to Back Theatre**

**PANEL DISCUSSION:**

## **BREAKING INTO THE ARTS**

**10:30AM – 12:00PM Saturday 27 June, Bille Brown Studio**

In a discussion chaired by Chris Kohn, Back to Back Theatre's Tamara Searle (Artistic Associate) and Remony Latham (Ensemble Member), JUTE Theatre Company's Suellen Maunder (Artistic Director/CEO) and Access Arts Achievement Award 2014 recipient Doug Robins will share their thoughts on breaking into the arts as an artist with disability.

Back to Back Theatre creates new forms of contemporary theatre imagined from the minds and experiences of actors with a disability, giving voice to the social and political issues that speak to all people. Based in the regional centre of Geelong, the company is one of Australia's most globally recognised and respected theatre companies.

Theatre maker Doug Robins has called Cairns home for over a decade. With the help of JUTE Theatre Company, Director Suellen Maunder, and a successful crowd-funding campaign, Doug developed his work *Propelled* through a creative development in 2013. *Propelled* is a play composed of Doug's stories that gives an insight into a life in a wheelchair and aims to help change the perception of people with a disability.

**Emma Bennison**

## **FINE LINE**

**5:00PM – 5:45PM Friday 26 June, Bille Brown Studio**

Hobart-based singer/song-writer Emma Bennison returns to her hometown to launch her new album, *Fine Line*.

Emma will perform a series of poignant, funny and thought-provoking original songs and stories. From relationships to leadership, advocacy to intimacy, no stone is left unturned in the telling of this extraordinary personal journey. Audiences will be treated to stunning vocals and honest lyrics that offer a refreshing take on some universal themes from Emma's unique perspective as a wife, mother, sister, CEO and disability rights advocate.

Former Executive Officer at Access Arts Inc, Emma can think of no better place than Undercover Artist Festival to join with Brisbane audiences in taking the next exciting step on her own artistic journey.

Join us for this once-only, unique opportunity, and you will also be supporting Queensland artists with disability. Emma will donate all proceeds from this event to the SAFE Fund - providing professional development grants to Queensland artists with disability.





Hahna Briggs and Jenny Newstead  
FROM CONVERSATION:  
**DIFFERENCE IS  
OUR STRENGTH**

6:30PM – 7:15PM Saturday 27 June  
Bille Brown Studio  
(double bill with Monster)

*From Conversation: Difference is our Strength* has developed out of an eight-year movement dialogue between Jenny Newstead (MBE) and Hahna Briggs (MDanceSt). Their current work continues this energetic conversation, exploring the use of crutches as tools of play, with a sprinkle of quirkiness and a pinch of surveillance.

Jenny is a former paralympic swimmer from New Zealand, and an integrated dance educator at the University of Otago in Dunedin. She won a total of 10 Paralympic medals, including seven gold medals, and broke 37 world records in her career.

Jenny and Hahna are part of GASPI! Dance Collective, Dunedin, New Zealand. In addition to choreographing and performing for GASPI!, they co-teach the collective's inclusive community dance class.



**Brisbane Outsider Artists' Studio (BOA)**

EXHIBITION BY  
**BRISBANE OUTSIDER  
ARTISTS' STUDIO**

**Duration of Festival  
Courtyard**

Responding to the theme of "undercover artists", BOA artists present their work on canvas capes, exploring their superhero side. Outside in the courtyard the work of BOA artists fly through the trees, scale walls, weave into vines and take you on a journey through the space. Look up, look down, look all around you.





The Brotherhood of the Wordless

## LEADERS OF TOMORROW'S WORLD

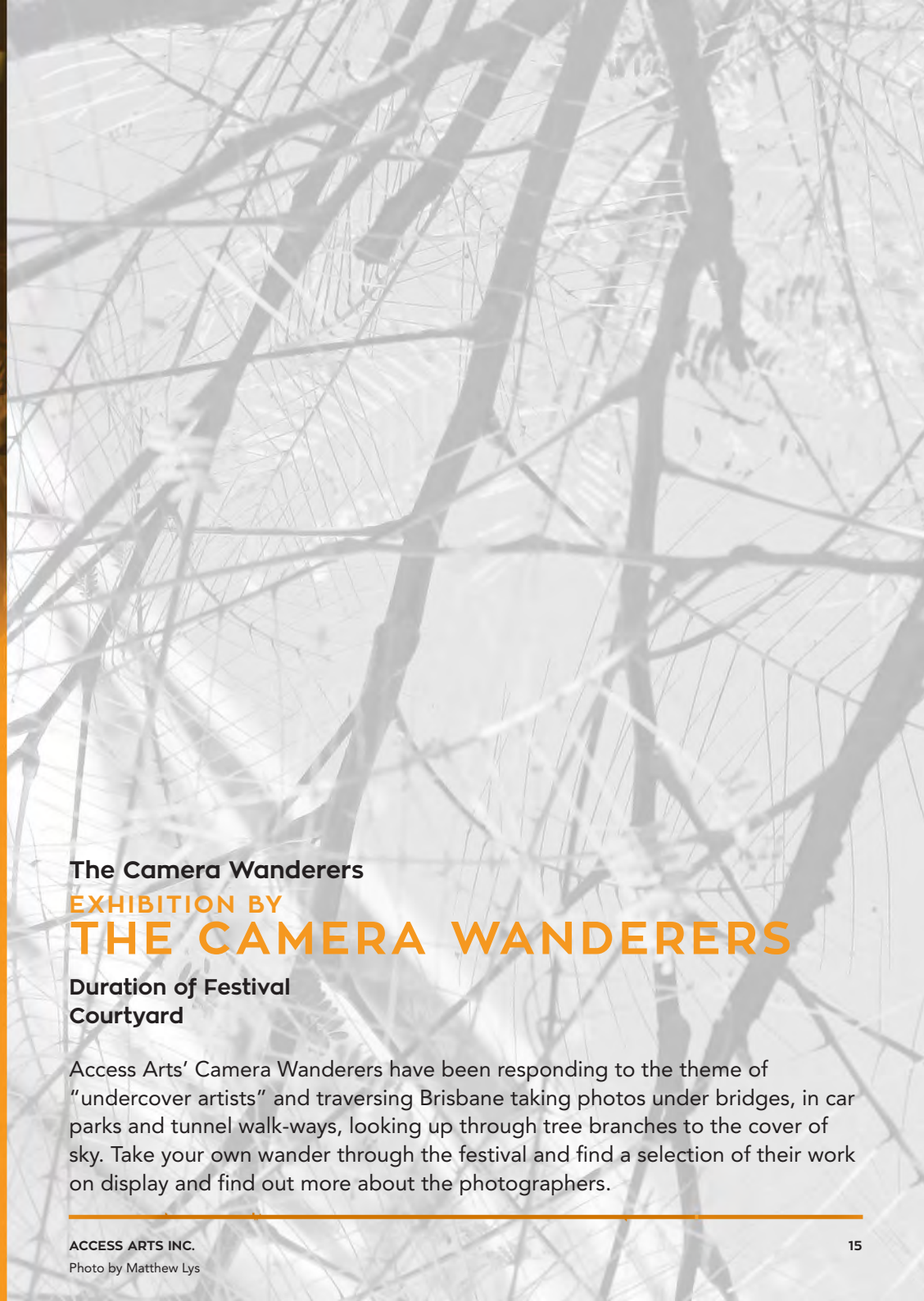
5:00PM – 6:00PM Saturday 27 June  
Studio Two

The Brotherhood of the Wordless is a group of writers who use facilitated communication because of difficulties with speech and co-ordination. Together they write poetry and prose that expresses their creative selves.

Award-winning performance poet David (Ghostboy) Stavanger teamed up with the group in 2009, and his vision for the group has inspired everyone with his dedication, professionalism and enthusiasm.

The Brotherhood of the Wordless has become a united voice for people without a voice, struggling to be heard. The success of these performances has improved their lives and sense of self, and increased their confidence to take their places in the world.

Over the last decade the group has produced a cabaret, a musical, books and DVDs. They have presented at Woodford, Brisbane Writers Festival, Queensland Poetry Festival, and the State Library of Queensland.



The Camera Wanderers

## EXHIBITION BY THE CAMERA WANDERERS

Duration of Festival  
Courtyard

Access Arts' Camera Wanderers have been responding to the theme of "undercover artists" and traversing Brisbane taking photos under bridges, in car parks and tunnel walk-ways, looking up through tree branches to the cover of sky. Take your own wander through the festival and find a selection of their work on display and find out more about the photographers.



## BARRY CHARLES

**8:30PM – 9:00PM Friday 26 June**  
Foyer

Sunshine Coast musician and singer-songwriter Barry Charles is a colourful performer and a veteran of the Australian troubadour scene. Barry has been labeled an “extreme vocalist” - his broad vocal range enables him to channel Tom Waits and scat or toss in falsetto at the drop of a hat.

Long periods of performing either solo or in small combos have allowed Barry a freedom of expression in terms of timing and song structure to the point where a given arrangement can vary widely from one outing to the next.

His songwriting touches the soul with observations of life, love, fantasy and humour. Barry will delight you with his original songs at Undercover Artist Festival on Friday 26 June.

Daniele Constance

## PEOPLE OF INTEREST

**4:30PM – 6:30PM Friday 26 June**  
Studio Two

Drawing on the direct experience of people who have survived unbelievable circumstances, *People of Interest* is a tribute, a testimony to those lived experiences. It poses as a platform for connection from one person to another, to redefine the judgment of a seemingly everyday person.

Imagine a living portrait. What if the painting of that person could speak, what would their story be? Imagine sitting in front of you is someone else’s grandmother, telling the story of how she overcame substance abuse in the 1980s, someone’s mother telling the story of how she survived 12 hours trapped in a crashed car on a highway, someone’s son fleeing from a war torn country. *People of Interest* is those stories, told by true survivors, in an intimate and personal setting.

*People of Interest* does not employ a traditional script, set or narrative. Rather, it pulls from contemporary theatre practices to weave raw material from non-trained artists through the use of audio recordings and site-specific practices. Each survivor will be set up in their own ‘portrait’ setting, and share their stories through pre recorded audio, one at a time with each audience member.

Collecting stories from true survivors, devised and directed with professional artists, *People of Interest* has artistic power from the real people and real material that they share.

*Daniele Constance - Director, Producer & Sound Design*  
*Alexandra Winters - Site & Lighting Design*  
*Anthony Pink - Sound Engineer & Production Manager*



Dance Integrated Australia

## DANCE INTEGRATED AUSTRALIA RESIDENCY

3:30PM – 4:45PM Saturday 27 June

Bille Brown Studio

(as part of Works in Development)

Inclusive dance meets new physical, artistic and collaborative heights at the Dance Integrated Australia Residency. Philip Channells and Sam Leahy will be hosting six movement and physical theatre workshops in the Moreton Bay region and Brisbane to assist in generating your creative voice.

This residency is for performing artists with and without a disability. Participants are offered a unique opportunity to take part in the final workshop, featured in performance mode at Undercover Artist Festival on the 27 June 2015 at Queensland Theatre Company.

GALLEONdj

## WORLD ODDYSEY

7:15PM – 8:00PM Saturday 27 June

Foyer

Mitch Medcalf, aka GALLEON, is regarded by many as Australia's "Stevie Wonder" of DJing. GALLEON has had segments on the Revolution (Austereo Network) in 2014, and has supported the likes of JimmyZ (Wild FM/Nova), Rich Curtis at the after party for the La Vibrations Boat Party in January, and the legendary Henry Saiz from Spain at Capulet Bar this March, while holding residencies at the Port Office and Phoenix Bar to name a few.

World Oddysey, presented by GALLEON, is set to take you on a journey across the globe and back, introducing the listener to eclectic world vibes, and worldly sounding remixes of popular tracks. From Punjabi to Salsa, Afrobeat to Reggae, German New Wave to Makossa and everything in between, World Oddysey has you covered.

If you are looking for something fresh and different, and would like to hear a new take on contemporary and traditional world music, this is a must. Through the music of many cultures and nationalities GALLEON plays, he communicates his universal message of happiness, love, acceptance and... Togetherness.

The Light Ensemble

## DOCUMENTARY SCREENING

7:15PM – 7:55PM Saturday 27 June

Studio Two

The Light Ensemble will present a video of their training with acclaimed artist and Feldenkrais specialist Anna Yen, followed by a Q&A session about what they would like to make next.

The Light Ensemble is one of Backbone's most treasured ensembles. The Light Ensemble celebrates the artistic voice of young people who identify as living with a disability. The focus of the ensemble is to create fully developed, high quality performance works. *Total Eclipse of the Heart*, performed at Backbone's 2high Festival in January 2015, was the group's favourite performance to date.

David Waldie, Ensemble Member, says, "I am looking forward to showing you all our next show. It contains lots of laughter and clowns. It will be a show stealer. Haha – that's a clue. So come along and see it. You will laugh too!"



Ged Maybury

## PUTTING ON THE PUNK

FANTASY, COSTUMES AND PHOTOS

12:00PM – 3:30PM Saturday 27 June

Courtyard

'Punk' - the playful defiance of conventions; self-expression; stretching boundaries. A costume table offering people the chance to dress up and become something different.

Hosted by roving cosplayer Ged Maybury sporting his most bizarre costumes, always ready for photos.





Joshua Pether and Lynnette Voevidin

## MONSTER

6:30PM – 7:15PM Saturday 27 June

Bille Brown Studio


(double bill with From Conversation: Difference is our Strength)

Joshua Pether is a dance artist based in Perth, Western Australia who identifies as having a disability. He was a dancer for LINK Dance Company and Ochre Dance Company and is currently working with Touch Compass based in Auckland, New Zealand. He has performed both nationally and internationally.

Lynnette Voevidin is a visual artist based in Perth, Western Australia. She holds a Masters of Fine Art from Curtin University. Solo exhibitions of Lynnette's films have screened in Perth and Adelaide, and she has also exhibited her work in America, Brazil, Cuba, Indonesia, England and Korea.

As a collaborative team both Joshua and Lynnette will work together to perform *Monster* – a solo work devised in 2014. Made in collaboration with integrated dance practitioner and 2010 Young Australian of the Year Finalist Dan Daw, *Monster* seeks to uncover what it is to be monstrous and how the body, particularly the disabled body, can communicate this. Utilising the skills of Lynnette, the collaborative team will transform *Monster* from a solo dance piece to a performance art piece, conceptual in nature - a framed painting if you like.

The character in this work fluctuates between the world of good and evil. His body is forever changing, and with this change comes his metamorphosis into the *Monster*.



Thane Pullan

## THANE PULLAN:

STAND-UP COMEDIAN

9:00PM – 9:50PM Saturday 27 June

Studio Two

(double bill with Blonde Ammunition)

Thane Pullan calls himself the stand-up comedian that doesn't stand up, or talk. He started out in stand-up comedy last year but couldn't do it without special software. When suitable software couldn't be found he made his own.

Hailing from Christchurch, New Zealand, Thane is known for being blunt about how people treat people with disabilities.... and being blunt on most topics.

You can expect hard-hitting humour about having a disability and life in general from this comic.

When he is not making people laugh Thane is busy creating his own line of accessibility software.

Doug Robins

## PROPELLED

12:00PM – 1:00PM Saturday 27 June  
Studio Two

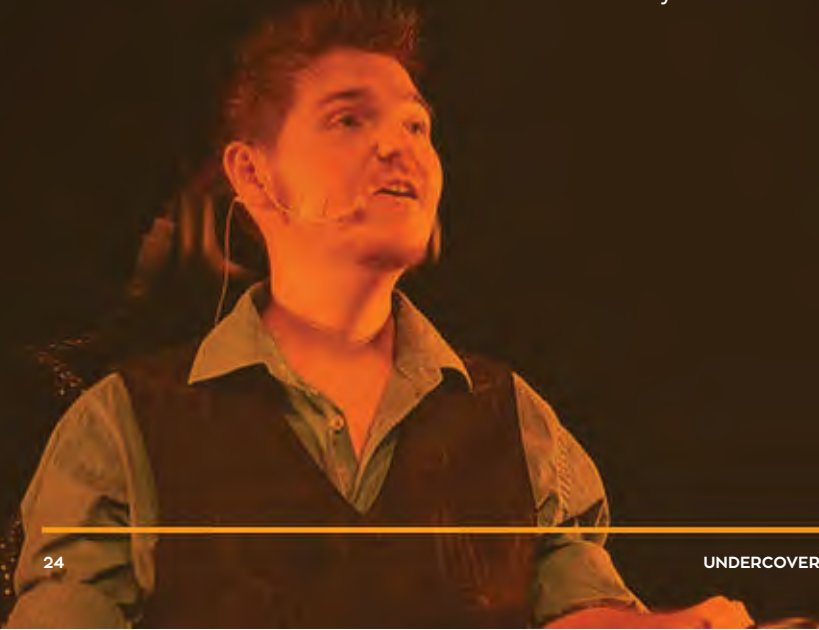
Coming of age is a tricky business, especially when you're on wheels and life keeps throwing roadblocks at you.

Doug is 25 years old. He likes football, partying with his mates, and girls. He's pretty much your average guy except for one big difference. Doug has Duchenne Muscular Dystrophy, and negotiates life's twists and turns in a wheel chair; not always an easy feat despite the help and support of friends, family and well-meaning strangers.

Life is no blithe spin in the park; stairs aren't built for wheels, and some doors are easier to get through than others.

Armed with a whole lot of smarts, an impressive capacity for patience and a keen awareness of life's absurdities, Doug takes a heroic journey into the liminal worlds between boy and man, man and machine, the real and the fantastical, to discover who he is, and in the process finds a path uniquely his own.

This film showing of theatre production *Propelled* offers a rare insight into an inspiring life through the eyes of an extraordinary man on a remarkable journey. Take a ride and be transformed. The differences may not be what they seem.



Karen Lee Roberts

## IT'S NOT EASY BEING GREEN

7:00PM – 8:00PM Friday 26 June  
Bille Brown Studio

Karen Lee Roberts is the playwright and performer of the new one-woman cabaret *It's Not Easy Being Green*, which premieres at Undercover Artist Festival 2015. Directed by Sandro Colarelli, the performance has been created to entertain and educate people on the issues of mental wellness. This funny and moving, provocative and enlightening performance will invite you to learn as you are treated to a feast of music and theatre. *It's Not Easy Being Green* may make you laugh, make you cry, and encourage you to live a more fulfilling life.

Karen has performed extensively in both Australia and the United Kingdom. She has sung at The Old Vic Theatre in London, acted on stage at the Queensland Performing Arts Complex, Metro Arts, Brisbane Powerhouse and Queensland Multicultural Centre, and performed her original works at the Wataboshi Festival in Johor Bahru, Malaysia. Karen has also been a part of various festivals including the Brisbane Festival, Fete de la Musique and Sydney Festival. She has recently worked with OzFrank Theatre Company.





Second Echo Ensemble

## THE RITE OF SPRING

8:00PM – 8:40PM Saturday 27 June

Bille Brown Studio

Second Echo Ensemble is a curiosity-driven ensemble that values and grows creative relationships, unique perspectives, and group devised physical theatre practice. At the core of Second Echo is the ensemble of deviser/performers. The majority are young adults, many of whom live with intellectual disabilities and have been members of the group since its inception. Integration and diversity are at the heart of the ensemble's goals.

Second Echo Ensemble's work is not simply about access or equality. It's about new ways of thinking and new opportunities for engagement with a diverse pool of creative talent, serving both to widen and deepen the possibilities for the creative practices and conversations of the future. They don't make performances about having a disability or not having a disability. They make work about life, about its surroundings, its imaginings, its rhythms, its angers and its celebrations.

Second Echo Ensemble is thrilled to be presenting glimpses of their latest project *The Rite of Spring*, a creative reimagining of a classic piece, at Undercover Artist Festival. Through dance, physical theatre and immersive design they explore the promise of spring. Their hopes, expectations and choices. Their rights and dreams.



Alicia Jane Steele

## SCHADENFREUDE

DARK HUMOUR. LIVE MUSIC. BODY PAINTING.

9:00PM – 10:00PM Friday 26 June

Bille Brown Studio

Fresh from a headlining season at Melbourne's iconic Butterfly Club theatre, *Schadenfreude* returns home to Brisbane for a one-night-only special presentation. Inspired by early 20th Century French and German "kabarett" culture, this dark-humoured mini-musical explores the concept of "Schadenfreude" – joy in the misfortune of others.

Starring Alicia Jane Steele, the bastard child of a four-way love affair between Judy Garland, Tom Waits, Bette Midler and Ute Lemper (we're still unsure who the mother is).

Live body painting by international-award-winning body paint artist, Ria Willering. Live cabaret band featuring trumpet, double bass, piano accordion, drums/percussion and vocal harmonies.

Sophisticated yet bawdy. Theatrical and personal. Dark and uplifting.



David Truong and Donnelle Brooks

## AMBITION ROAD

12:15PM – 1:00PM Saturday 27 June

Foyer

*Ambition Road* is a music collaboration between singer-songwriters David Truong and Donnelle Brooks. Featuring David Truong on keyboard and vocals and Donnelle Brooks on guitar and vocals, *Ambition Road* brings to life the original songs of both artists in an acoustic-driven, reflective, folk/soft-rock style.

This 45-minute live set of original songs is full of heartfelt lyrics and haunting melodies drawn from the life experiences of David Truong and Donnelle Brooks. The performance will be a preview of content featured in their debut album *Ambition Road*, due to be released later this year.



Christina Youhanna

## BLONDE AMMUNITION

6:30PM – 7:15PM Saturday 27 June

Bille Brown Studio

(double bill with Thane Pullan: Stand-up Comedian)

Australian actor Christina Youhanna is a graduate of NIDA who has performed in television, film and theatre. She has also worked as a singing and acting teacher in Brisbane for twenty years.

After the success of Christina's one-woman show *Global Garbage* at Metro Arts in 2009 she is now devising a new solo show.

*Blonde Ammunition* is a series of monologues featuring the very blonde "Cindy C" – a Hollywood actress who will share her stories and New Age philosophies with such outrageous conviction you might just believe they were all true!





# UNDERCOVER ARTIST FESTIVAL

## PROGRAM SCHEDULE

### FRIDAY 26 JUNE

TIME	ARTISTS	VENUE	DUR.
12pm - 3pm	Back to Back Theatre Workshop	Studio Two	3 hrs
4:30pm - 6.30pm	Daniele Constance - People of Interest	Studio Two	2 hrs
5pm - 5:45pm	Emma Bennison - Fine Line	Bille Brown Studio	45 min
6pm - 8pm	Alicia Jane Steele - Live Body Painting	Green Room	2 hrs
7pm - 8pm	Karen Lee Roberts - It's Not Easy Being Green	Bille Brown Studio	1 hr
8pm - 9pm	Access2Arts - UN Convention on the Rights of People with Disabilities Videos	Studio Two	1 hr
8:30pm - 9pm	Barry Charles	Foyer	30 min
9pm - 10pm	Alicia Jane Steele - Schadenfreude	Bille Brown Studio	1 hr

### SATURDAY 27 JUNE

TIME	ARTISTS	VENUE	DUR.
10:30am - 12pm	Back to Back Theatre Panel Discussion - Breaking into the Arts	Bille Brown Studio	90 min
12pm - 1pm	Doug Robins - Propelled (Film Screening)	Studio Two	1 hr
12:15pm - 1pm	David Truong and Donnelle Brooks - Ambition Road	Foyer	45 min
1pm - 2:30pm	Arts Access Australia Panel Discussion - Leadership Through A Different Lens	Bille Brown Studio	90 min
2.30pm - 3.30 pm	Camera Wanderers (Film Screening)	Studio Two	1 hr
12pm - 3:30pm	Ged Maybury - Putting on the Punk: Fantasy, Costumes and Photos	Courtyard	3.5 hrs
3:30pm - 3:45pm	Access Arts Music Ensemble - Jazz Hands (Works in Development)	Bille Brown Studio	15 min
3:45pm - 4:15pm	Dance Integrated Australia Showing (Works in Development)	Bille Brown Studio	30 min
4:15pm - 4:45pm	Access Arts Theatre Ensemble - A List of Acquisitions (Works in Development)	Bille Brown Studio	30 min
5pm - 6pm	The Brotherhood of the Wordless	Studio Two	1 hr
6:30pm - 6:50pm	GASP! Dance Collective - From Conversation: Difference is Our Strength (Double Bill with Monster)	Bille Brown Studio	20 min
6:55pm - 7:15pm	Joshua Pether and Lynnette Voevidin - Monster (Double Bill with From Conversation: Difference is Our Strength)	Bille Brown Studio	20 min
7:15pm - 8pm	GALLEONdj - World Odyssey	Foyer	45 min
7:15 pm - 7:55pm	The Light Ensemble - Documentary Screening and Q&A	Studio Two	40 min
8pm - 8:40 pm	Second Echo Ensemble - The Rite of Spring	Bille Brown Studio	40 min
9pm - 9:20pm	Christina Youhanna - Blonde Ammunition (Double Bill with Thane Pullan)	Studio Two	20 min
9:20pm - 9:50pm	Thane Pullan: Stand-up Comedian (Double Bill with Blonde Ammunition)	Studio Two	30 mins



## ABOUT ACCESS ARTS

At Access Arts, we are passionate about pioneering opportunities for people who experience disability or disadvantage to excel in the arts. One in five Australians live with disability; many more are unable to participate in the arts due to disadvantaged circumstances.

We assist artists to develop their practice. In all artforms at all levels we support our vision that everyone is free to enjoy, participate, create and work in the arts.

We are culturally ambitious. Over three decades we have become one of Australia's acknowledged leaders, inspiring the cultural sector to break barriers that change lives.

We broker strong regional, national and international partnerships to help us deliver our vision.



## TICKETING

Festival Passes for Undercover Artist Festival can be purchased online, in person or over the phone from Queensland Theatre Company's Box Office. After purchasing a Festival Pass you will be contacted to book into the sessions you would like to attend.

**Festival Pass Adult - \$25**

**Festival Pass Concession - \$20**

**Festival Pass Companion Card Holder – free**

### PHONE

(07) 3010 7600

### WEB

<http://undercoverartistfest.com>

### IN PERSON

78 Montague Road, South Brisbane QLD 4101

## ACCESSIBILITY

Undercover Artist Festival and Queensland Theatre Company are committed to providing access for all patrons to the festival.

Patrons must contact Queensland Theatre Company's ticketing office to communicate access requirements when tickets are purchased. Please note that access requirements cannot be guaranteed if information is not received prior to the commencement of the festival.

Queensland Theatre Company is wheelchair accessible. Auslan interpreters and Access Arts staff will be available at the venue to assist patrons. Events will be Auslan interpreted if requested prior to the festival.

## PARKING

Metered parking for 43 vehicles is available directly outside Queensland Theatre Company's building at 78 Montague Road South Brisbane (Mon-Fri, 7am-7pm) and is managed by Brisbane City Council.

Other metered street parking is available in nearby streets (Montague, Merivale, Cordelia, Boundary). Paid parking is available at the Queensland Art Gallery/Queensland Museum car park for a flat rate of \$15.00.

There is a pick up and drop off point located at the Montague Road car park entrance to Queensland Theatre Company.

## TRANSPORT

### BUSES

The closest bus stop is at the Cultural Centre. It is approximately 500 metres in distance from the GOMA/State Library Bus Stop to Queensland Theatre Company.

### TRAINS

The closest train station to Queensland Theatre Company is the South Brisbane Station, across Grey Street from QPAC.

It is approximately 900 metres distance from South Brisbane train station to Queensland Theatre Company.

### CITYCAT

The nearest CityCat terminal is the Southbank 1 terminal – 1.3km distance to Queensland Theatre Company.

For full details of all Brisbane public transport visit [translink.com.au](http://translink.com.au)

## PARTNERS



Proudly funded by the Australian Government

The Regional Arts Development Fund is a Moreton Bay Regional Council and Queensland Government partnership to support local arts and culture.

Access Arts would like to acknowledge the generous donation made in the memory of the late Diane Hill, performer and former Access Arts Management Committee Member.

## BOARD & STAFF

### ACCESS ARTS TEAM

Pat Swell	Chief Executive
Belinda Locke	Festival Director
Chris Collins	Finance and Office Coordinator
Timothy Brown	Project Coordinator
Rachel Gaffney-Dawson	Visual Arts Coordinator
Harmonie Downes	Arts Administrator
Angela Witcher	Marketing Coordinator
Carmelo Abate	Festival Administrator
Joelene Scot	Festival Administrator
Alexandra Lawton	Administration Assistant

### ACCESS ARTS MANAGEMENT COMMITTEE

Thomas Bradley QC	President
Catherine Black	Treasurer
Susan Ball	Secretary
Liz Crawford	Member
James Cunningham	Member
Robert Hoge	Member
Patrice McKay	Member
Sam Nicolosi	Member
Patrick Tyro-Burns	Member

Cover Image by Amy Carter featuring Emma J Hawkins  
Brochure Design by Sean Dowling





---

## CONTACT US

### ADDRESS

1F/24 Macquarie Street,  
Teneriffe QLD 4005

### PHONE

07 3254 9585

### EMAIL

[info@accessarts.org.au](mailto:info@accessarts.org.au)

[UNDERCOVERARTISTFEST.COM](http://UNDERCOVERARTISTFEST.COM)



[AccessArtsqld](https://www.facebook.com/AccessArtsqld)



[@aaqld](https://twitter.com/aaqld)

[#uaf15](https://twitter.com/aaqld)