



Evidence of artistic diversity and maturity within the Arts and Disability/Disadvantage sector is emerging constantly, with indications that this field is now influencing the creative work of 'mainstream' artists. Recent theatrical productions such as Back to Back Theatre's *Freak Show*, developed with Circus Oz, and Soul Theatre's production of *A Lie of the Mind* by Sam Shepard, strongly convey disability perspectives.

Recently, in a briefing for Arts Access staff, visiting US wheelchair dancers, Charlene Curtiss and Bruce Curtis, of the Paradox Dance Company, observed that the disability movement in England had long identified the arts as a vehicle for activism and saw potential for similar activity in Australia. The growth of the DADAA network is evidence of such a mobilisation occurring here - led instead by artists, not disability activists.

While the disability movement broadly needs to have a fresh look at the arts, the 'mainstream' arts industry needs to understand the scope and achievement of the Arts and Disability/Disadvantage movement.

In October, Arts Access Executive Director, Helen Bowman travelled to Canberra to ensure that this sector was represented at the 'Culture in Power' symposium of the National Campaign for the Arts Australia (NCAA) which reviewed responded to federal government's and the opposition's cultural policy directions.

The DADAA brochure will be officially launched early in the new year.

For further information about DADAA contact Jane Trengove, National DADAA Co-ordinator, at Arts Access on 699 8299

The DADAA Network acknowledge the support of the Australia Council.

Arts Access thanks David Commins of Creative Deeds for his generous donation of design services, and Typo Mac for their donation of bureau services and film.

INSIDE

- * Spring at Cruden Farm Report
- * Artistic Program wrap up for 1994
- * EASE gets down to business
- * Training reports

DADAA promotes excellence in Arts & Disability/Disadvantage

The creative achievement and diversity of the Arts and Disability/Disadvantage movement in Australia is featured in a new full colour brochure produced by Arts Access for the National DADAA Network.

DADAA - Disability in the Arts, Disadvantage in the Arts, Australia - is a national network of organisations and individuals concerned with promoting the cultural participation of people with disabilities and people disadvantaged by social conditions. Arts Access will continue to act as national coordinator of DADAA during 1995.

The aim of the new DADAA brochure is to bring Arts and Disability/Disadvantage to the attention of decision makers in all sectors that impact on Arts and Disability

and to the general public.

Visibility within the broader arts sector is crucial to the development of Arts and Disability/Disadvantage organisations through the availability of appropriate arts project funding, production resources, accessible tertiary arts education and training, physical access to arts venues, and many other critical issues.

The brochure highlights exemplary arts projects and innovative arts organisations within the field in each state.

Featured projects include the touring performance piece, *Cabaret Erratica*, from Access Arts' (Qld); a new SBS/Film Australia TV series, *House Gang*, produced with Accessible Arts (NSW); Arts Access' 1992 touring exhibition *Stormy Weather*, and *Somebody's Daughter* Theatre Company (Vic).



Director's Report

1994 has been a year of change and consolidation. Firstly, change with

Judith Isherwood leaving to take up a position with the Fringe Network, and my the arrival in April as new Executive Director. Then, consolidation of our activities, typified by the exhaustive strategic planning process that Miriam Bass has led us through with EASE - the Entertainment Access Service.

This has been a difficult year financially due largely to our core funding not keeping up with the growth of the organisation. However Arts Victoria has increased our level of organisational funding by \$15,000 for 1995.

The last months of 1994 have been very busy with the State DADAA Conference and the national meeting of the DADAA network in Sydney, which coincided with the World Assembly of Disabled Peoples International. The DADAA meeting was very important, allowing us to formulate a response to the Arts and Disability Report commissioned by the Australia Council.

It is clear that organisations such as Arts Access are well able to deliver a number of the recommendations of the report.

We welcome Roisin Johnson, who joins us part time for six months through the CAP scheme.

Many thanks to everyone who was involved in the Cruden Farm fundraising event, held in November, for their hard work and support. The day was a success, despite truly dreadful weather, with over 700 intrepid visitors coming to view Dame Elisabeth Murdoch's magnificent garden.

1995 is our 21st anniversary year and we plan to celebrate that milestone with our supporters in a number of ways. The year will see a raised profile for Arts Access, a revitalised EASE and a number of innovative projects come into fruition. We hope to see you in 1995 during what promises to be a very exciting year for Arts Access.

Finally I would like to wish all our members, volunteers, artists, supporters and colleagues a merry Christmas and a happy, safe and prosperous New Year.

Helen Bowman

Helen Bowman, Executive Director

NEWS

Cruden Farm event weathers the storm

Despite almost succumbing to what Dame Elisabeth Murdoch believes was the worst weather at Cruden Farm for 30 years, our first open air fundraising event was enjoyed by nearly 800 people on November 6th.

As the wind and rain stormed in, it was heartening to see people still arriving in buses from places as far away as Ballarat and Phillip Island.

After costs were deducted, over \$8400 was raised through gate sales, raffle tickets, merchandise and donations.

The funds will go towards the appointment of a full-time manager for the Arts Access Trust Development Program. The Trust Appeal Committee is continuing to seek funds for the program, which is hoped to begin in 1995.

The Committee wishes to thank all our brave and loyal volunteers for making the day run so smoothly, and particularly to Alan Moor, chair of the Cruden Farm event subcommittee, for his time over several months of organisation.

The staff at Cruden Farm, were wonderful, particularly gardener Michael Morrison, who returned the garden to pristine glory following the previous night's storm.

Our special thanks goes to Dame Elisabeth Murdoch for making Cruden Farm available to us; for her hospitality throughout the planning and presentation of the event and for her generous personal support.

As a token of Arts Access' thanks, Trust Appeal Chairman, Creighton Burns presented Dame Elisabeth with a potted kangaroo paw, which we hope will find a place in Cruden Farm's native garden.

Arts Access also acknowledges the generous support of Heronswood of Dromana, Leader Newspapers, Humphrey and Formula Press, Pan Macmillan, Langwarrin Scouts, and St John's Ambulance.

Artists Awarded

Arts Access congratulates Sally Marsden and Megan Evans, two artists with long associations with Arts Access, for being awarded Creative Fellowships of \$35,000 each through the Australia Council.

Sally Marsden, the author of *Healthy Arts*, is currently coordinating a visual arts program with AIDS patients through the Continuing Care ward at Fairfield Hospital. Megan Evans most recently worked with Arts Access on the Werribee Youth Arts Program during 1993.

Congratulations also to Maria Filippow,



Above: Ms Judy Aylward of East Malvern (left) hears that she has won first prize in the Spring at Cruden Farm Raffle. Pictured with Public Affairs Manager Viv Carroll (centre) and Administrator, Rhona Bester (right). Ms Aylward won \$300 worth of plants from Heronswood of Dromana. Photograph by Carol Downey

for receiving a travel grant of \$5,000, also through the Australia Council. Maria has been a regular Arts Access project artist for many years.

It must be Christmas:

1. Microsoft to donate computer software

Arts Access is delighted to announce that Microsoft Pty Ltd is to donate computer software for use within the Arts Access office.

Executive Director, Helen Bowman said Microsoft's donation is a welcome contribution to the development of Arts Access' computer strategy which will see all our IBM compatible computers networked, with the aim of greater productivity and efficiency in word processing and information management.

The software donated is Microsoft Windows for Workgroups and Microsoft Office for Windows - each package being supplied with nine additional licences.

2. Our 'new' recycled computer

Within days of the Microsoft news, Helen Bowman received a phone call from Project Recycle in Melbourne, informing her that Arts Access was to be given an IBM compatible computer.

The computer will most likely be installed in the Resource and Training Unit whose current computer is inadequate for the tasks required to manage the expanding Resource Collection.

Project Recycle provides community organisations with surplus computer equipment donated by the business sector.

For further information about Project Recycle contact Peter Horsley on 650 6624 or Fax 650 3689.

Artistic Program

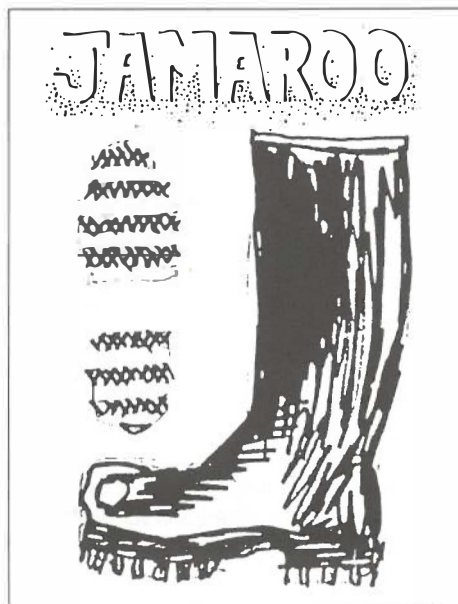
H&CS Psychiatric Services Projects

Three pilot projects conducted with funding through Health & Community services, Psychiatric Services, were completed in December. They are:

Amaroo Music

Participants and staff of Amaroo, a community based program in Williamstown operated by the Richmond Fellowship, launched their audio cassette, *Jamaroo*.

Arts Access musician, Sam Lemann, worked with the participants, staff, and Amaroo artist -in-residence, Thea Calzoni, to produce the nine original songs.



North Richmond Community Health Centre

An exhibition of visual art works created by local Indo-Chinese residents, with severe psychiatric disabilities, was launched by Professor David Pennington, at the Centre in November.

The exhibition was also held in conjunction with the launch of the Health Centre's *Celebration Calendar*.

Given the success of this visual arts program Arts Access will support both the Health Centre and the Doing Things Program, through the City of Yarra, to extend the program into 1995.

Halcyon Writing

Writer, Geoff Prince, has now prepared a collection of poems created during the 12 week program of workshops held at Halcyon, a community based program in Ferntree Gully.

This publication will be available from Arts Access in the new year. See the poem, *The Prom*, below.

Other Projects

Ballandella

Ballandella is a day centre for people with intellectual disabilities and is based in Benalla in northern regional Victoria.

Josephine Lee, a performance artist living in the Albury-Wodonga area, has been conducting weekly workshops with participants from the centre.

This pilot project was established to provide the participants with an opportunity to explore their interests and skills in drama, movement and improvisation and with a view to conducting a more extensive drama project over the next 12 months.

Other participants worked with a local visual artist, Penny Jones, to develop design skills through the making of props and costumes.

This pilot stage was celebrated with a performance to family, friends and the local community at the Rose City Reception Centre in Benalla.

The project has been supported through Coles Myer.

Northcote Day Centre

Centre clients and staff celebrated the culmination of the project with artists, Jedda Bellham and Rhonda Whittaker, on

Friday December 16, with a community performance piece, based on themes of past, present and future lives.

The piece was structured around a series of vignettes incorporating music, songs, dance and masks.

The finale of the performance featured a Scots highland piper accompanying the release of helium balloons over the adjoining parklands. Every balloon carried a wish for the future of a participant.

Writer in Community

Writer, Bev Roberts has just completed a series of weekly workshops, over a 3 month period, with participants through the St Kilda Drop-in Centre, Open House/the Prahran Mission and the Recreation Access Group through the City of Port Phillip.

Bev has produced 20 'mini publications' - one for each individual participant - representing a selection of their poetry, short stories and life stories.

In early 1995, the three groups will join together to launch a combined anthology of selected writings. These publications will be distributed to local libraries, writers centres in each state and will also be available from Arts Access.

Fairfield Hospital

The visual arts project with artist, Sally Marsden, and patients, staff, family and friends will be completed in January 1995.

Rob Knowles, the Minister for Aged Care Services visited the hospital in mid December and Sally presented, in the Continuing Care Unit, a range of works-in-progress created by participants living with AIDS.

The Prom by Lorna June, participant, Halcyon project

I have had a recent journey -
not so very far from our home.
I've been down to the Prom you see -
And pranced in the sea's frothing foam.

We walked across to Sealers Cover,
Our big boots clanked on the boardwalks.
We cooked tea on a little stove,
With rosellas, ravens and hawks.

Night time walks among the possums.
Day time strolls beneath the cockies.
Its evening when the wombat comes.
Kookaburras eat what they seize.

Ferny glades are full of tree-ferns
Small fresh streams pass through the
middle.

Here many ferns the field gnat learns.
Eco systems are a riddle.

We sat atop of Mount Bishop,
And surveyed all the bush around.
Pray do not let the sawyers lop
The mighty trees which there abound.

Sometimes when the rain clouds leak
down
We wear our rain proof coats and pants.
Its then we smile without a frown -
And off we go with puffs and pants.

All night we're snug in sleeping bags.
The tents keep out the rain and frost.
The laden tree above us sags,
in a world crystal-like embossed

To Wilson's Prom my heart belongs;
For there bushwalkers will return.
Where my mind is full of bird songs,
And tracks for the walking I yearn

Resource & Training Unit Update



Above: Visual artist, Jenny McCarthy (right) with participants in the Creative Arts with the Aged III workshop, held at the Arts Access Studio in November - just one of the many training opportunities offered by the Arts Access Resources & Training Unit in 1994.

How training can meet your needs in '95

The Arts Access Resource and Training Unit will undergo a strategic planning process early in 1995 that will indicate future directions for all the Unit's activities.

Training has developed as a major service of the Unit, and will continue to grow to meet the needs of an ever widening range of agencies, staff and artists who work in the areas of disability and social disadvantage.

We invite you to contact Arts Access to discuss the training needs of your group. Programs can be designed to meet your needs, in your local area, within metropolitan Melbourne or regional Victoria.

Contact: Carol Downey, Resource & Training Officer on (03) 699 8299.

Training in 1995

Another series of Using the Arts workshops will kick off the training program for 1995. Designed for staff working with people with psychiatric disabilities, the series focuses on the benefits and outcomes of using the arts within mental health services. Workshops in the series are:

* **Creative Writing** with Bev Roberts February 22 & 23, 9.30am to 4.00pm Fee \$90.

* **Multimedia Visual Arts** with Maria Filippow. March 27 & 28, 9.30am to 4.00pm. Fee \$90 (2 days).

* **Creating Drama** with Jedda Bellham & Rhondah Whitaker May 3, 10 & 17, 9.30am - 4.00pm. Fee \$140 (3 days).

Bookings: Carol Downey 699 8299

Workshop Reports

* Creative Arts with the Aged III

Held on November 3 and 4, with visual artist, Jenny McCarthy. Due to strong demand from the aged care field more of these workshops are planned for 1995

* Mildura Workshop

Held on November 8 and 9 this regional workshop received good coverage in the local media, including WIN TV News.

Coordinated through the Mallee Older Adults Recreation Network, the workshop was designed for staff working in aged care and intellectual disability services.

Regional workshops can be formulated to suit the needs of individual services or groups of agencies within a region.

* H&CS - Psych Services

During October, Arts Access conducted a 3 day staff training program through Health & Community Services, Psychiatric Services, Staff Training Development Unit. The program was run at the Mont Park campus of North Eastern Metropolitan Psychiatric Services, and focussed on drama, led by performance artists Rhonda Whitaker and Jedda Bellham.

With heavy demands on community mental health services, staff are looking for new offerings that have practical, beneficial outcomes for consumers. Many staff comment that while they attend for professional reasons, they derive many personal benefits from the workshops and some staff identify the potential for arts workshops in team building.

* City of Port Phillip

A 3 day workshop for city staff working with disabled and disadvantaged residents in St Kilda and Port Melbourne.

The program helped raise awareness among workers of resources, information and networks in the newly amalgamated municipality.

EASE

Entertainment Access Service

1994 has been a creative year for EASE, with considerable planning and preparation occurring for developments in 1995 and beyond.

The lengthy strategic planning process wound up in December, with the major outcome being the identification of three main 'lines of business' which will be developed and promoted from early in the new year. These are: the EASE Ticket Service, the EASE Venue Access Program, and the EASE Industry Development Program.

A marketing and promotional strategy for these key program areas is in preparation. Expect some exciting new developments - and who is 'numero uno' in 1995?

Highlights of 1994 include:

* EASE Training Programs run with BASS staff and neighbourhood house staff from within the City of Port Phillip. Training will be conducted on a more regular basis in 1995.

* Membership has increased significantly over the passed six months, and a new price structure has been introduced: \$20 individuals; \$45 groups.

* **Consultations** on access policy issues with Flinders Park. Stand by for an exciting announcement of a major consultation in 1995.

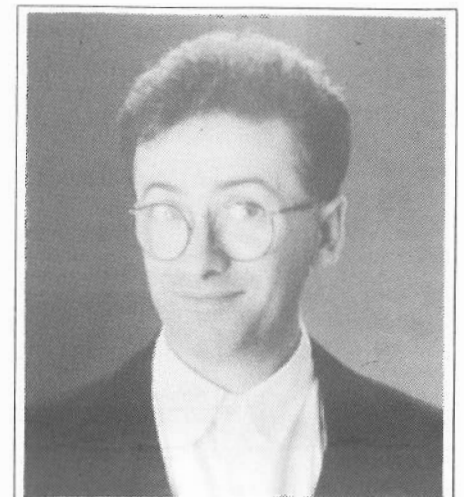
* **Ticket sales** achieved an all time record in September with 2500 sold, and several other high tallies during the year.

* **Theatre ticketing** now includes amateur theatre shows and suburban seasons by major companies. Some problem areas remain, particularly with access to allocations of tickets to major rock concerts.

* **Sports ticketing** has expanded to include all Melbourne based basketball teams, netball, Ford Australian Open Tennis, Mercantile Cup and Sheffield Shield Cricket, with plans for further expansion and continued lobbying for AFL tickets.

* **DDA Information** provided by EASE appears to be influencing some venues to prepare action plans regarding access and legislative requirements.

* **An annual EASE Consumers Day** is planned where individuals will self-nominate for places on the incoming Consumers Group, which will



Who's Numero Uno in 1995?
Watch this space

operate for the following year, after which the process begins again.

For further information about EASE and its services contact: Dean Michael, EASE Project Officer (03) 699 7636 or TTY (03) 699 8497.

New Resources

The following titles have recently been added to the Resource Collection of the Resource and Training Unit

PUBLICATIONS

ARTS & AGED CARE

To Give People Time
by Ian Heywood

A book about a two week arts training course for aged care workers in residential homes for the elderly. Three artists worked with eight care workers on dance, music, writing and reminiscence work. The course combined creative development and practical sessions.

ARTS & HEALTH

Acting for Health: Acting Against AIDS

A report into the effectiveness of theatre in health education in HIV and AIDS education in the UK.

Landmarks

A nine month sculpture project held in Gogarburn Hospital in Scotland, involving the residents (mostly with intellectual disability) and four artists. Natural and found materials were used to produce outdoor works.

ARTS & DISABILITY

Disability Arts - The Business
by Liz Crow

A practical guide from the UK on setting up and developing a disability arts project, organisation or forum. Covers planning, funding, structures, management, equal opportunity, access, training, administration, publicity and information.

Papermakers

by Mary Britton

Arts Council of N.Z. Evaluation of partnership with the IHC, the New Zealand Society for the Intellectually Handicapped Inc. Documents a paper making enterprise, following the progress of

learning, problem solving and team development. The Cottage Paper Mill has become a local tourist attraction and has led to partnerships with other local community groups.

COMMUNITY ARTS

Cultural Celebrations:
A Jamboree of Community Festival Ideas and Information

Regular Marvels

by Francois Matarasso
A comprehensive, practical handbook for community arts workers, amateurs, practitioners and arts development workers in dance, mime, music and literature. Includes chapters on setting up management, administration, programming, funding, training, exemplary projects.

LEGISLATION

Disability Discrimination Act (Pink kit)

Written for people with disabilities. Outlines areas in which discrimination is

unlawful and how complaints can be made under the DDA.

Disability Discrimination Act (Blue kit)

An awareness raising kit outlining what constitutes discrimination and what changes institutions and organisations are expected to make to improve access and equity.

VIDEO

ARTS & HEALTH

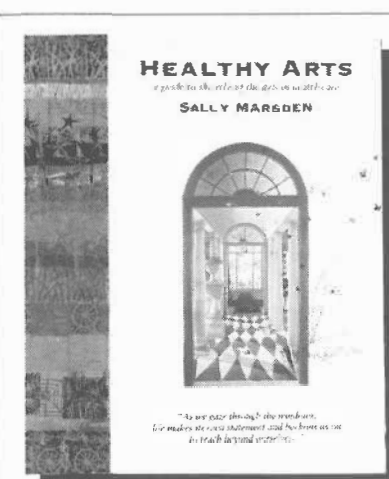
Acting for Health

An introduction to the nature of theatre in health education and the work of THE Trust in the UK. Includes extracts from programs, interviews with practitioners and participants and examples of THE techniques.

YOUTH

* Ask about new video and print resources from Youth Clubs (UK) focussing on the arts and youth.

For further information:
Carol Downey, Tues - Thurs
(03) 699 8299



HEALTHY ARTS

a guide to the role of the arts in health care

SALLY MARSDEN

Please send me _____ copies of *Healthy Arts* at \$5 each (covers postage and handling/receipt supplied) Total \$ _____

Name: _____

Organisation: _____

Address: _____

Postcode: _____

Cheques and money orders should be made out to Arts Access. Send orders with payment to:
Healthy Arts c/- Arts Access, 109-111 Sturt St, South Melbourne VIC 3205

Yes! I want to do more to help Arts Access reach more people with more creative programs and services.

I wish to donate:

☐ \$50 ☐ \$250 ☐ \$100 ☐ \$25 ☐ \$.....

Donations of \$2 or more are Tax Deductible

Mr/Mrs/Miss/Ms.....

Address.....

Post Code.....

☐ Cheque enclosed ☐ Please debit my credit card

☐ Bankcard ☐ Visa ☐ Mastercard

Number:

Name on Card

Expiry Date / /

Signature

Please direct my donation to:

- ☐ Arts Access Trust
☐ Arts Access General Fund

Return with payment to:
Executive Director
Arts Access
109-111 Sturt Street
South Melbourne 3205 VIC

**ARTS
Access**

*Celebrating 20 years
of innovation and excellence
1974-1994*

Arts Access is a non-profit organisation committed to creating opportunities in the arts with people with disabilities or who are disadvantaged by social conditions.

Membership

By joining Arts Access now you will help us reach more people with more programs.

Memberships are tax deductible and range from:

\$15 concessional

\$30 individual

\$50 organisational member

Donations of \$2 or more are tax deductible

Members are kept up to date with activities through the quarterly newsletter. Access and the Annual Report. Members also receive discounts on all Arts Access publications and are invited to participate by attending public performances, exhibitions and special events related to our wide range of arts projects.

Arts Access acknowledges the financial assistance of the Commonwealth Government through the Australia Council, its arts funding and advisory body; Arts Victoria, a division of the Department of Arts Sport & Tourism; and Health & Community Services.



Staff

Executive Director: Helen Bowman
Program Manager: Bobbie Hodge
Public Affairs Manager: Vivian Carroll
Resource & Training Officer:
Carol Downey
Administrator: Rhona Bester
Receptionist: Samantha Marsh
EASE Project Officer: Dean Michael
EASE Bookings Officer: Lisa McKoy
Jobskills Trainee: Nerrida Weller
CAP Trainee: Roisin Johnson
Volunteer Assistants: Patricia Bryant,
Mary Brogan, Jim Catts, Eve Lawson,
John Pidd, Gaye Walsh

Arts Access
109-111 Sturt Street
South Melbourne VIC 3205

Telephone (03) 699 8299
Fax (03) 699 8868
TTY (03) 699 8497

Access - a newsletter of ARTS ACCESS Society Inc.
Registered by Australia Post
Print Post Publication NO. PP 325649/0005

**SURFACE
MAIL**

**Postage
Paid
Australia**

Ms Anne Sedgley
Serials Librarian
State Library Of Victoria
328 Swanston Street
MELBOURNE 3000

If undelivered return to:
Arts Access
109-111 Sturt Street,
South Melbourne VIC 3205